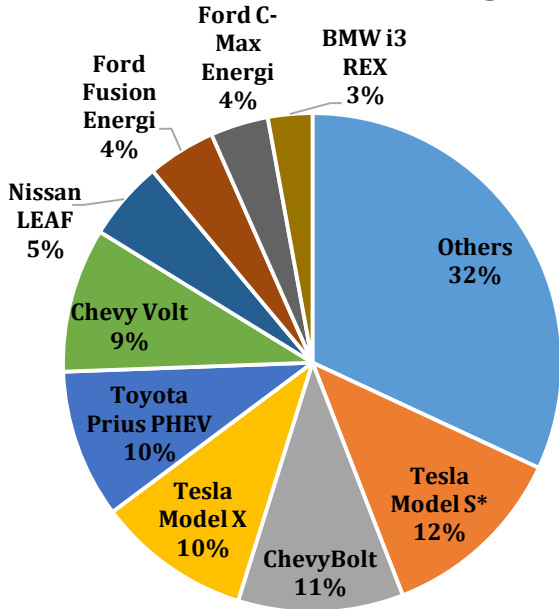
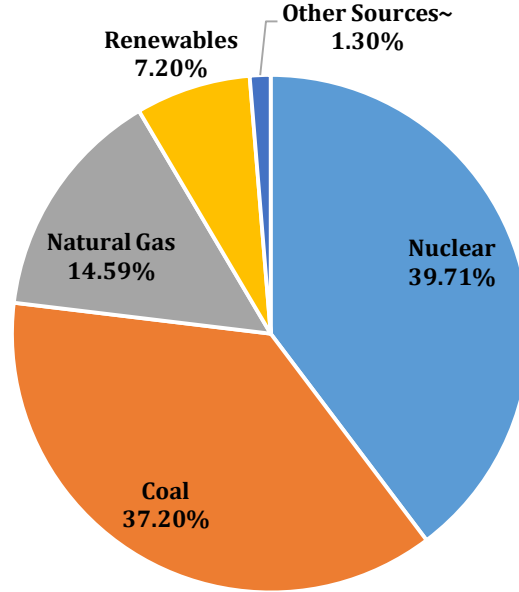


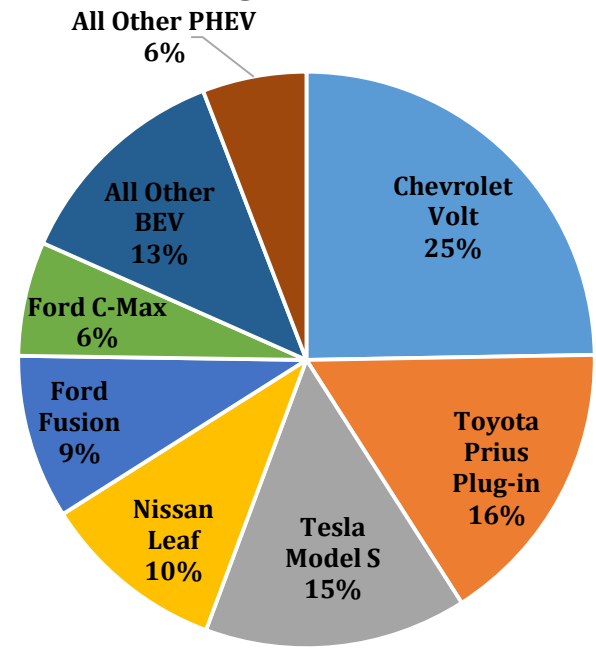
### 2017 National Sales of Leading BEVs



### 2017 MD Electric Generation Sources\*



### Maryland Leading PEV 2016 Registrations



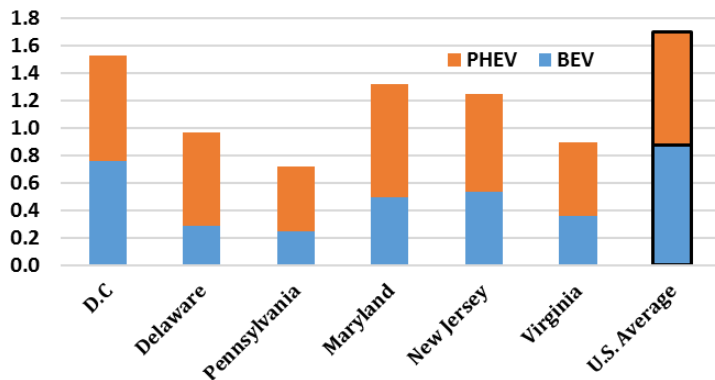
Avg. Price for  
Gallon of Gasoline  
in MD:  
**\$2.68**

Avg. Price of  
Electric Equivalent  
Gallon in MD:  
**\$1.37**

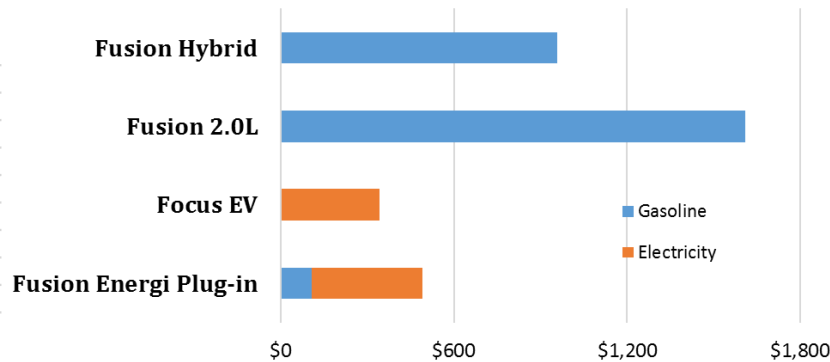
\*Renewables (Wind, Solar, Biomass, and Hydro) make up 7.20% of Maryland's source for electricity.  
~Other Sources includes Oil and Other Fossil Fuels

Check model availability on AFDC. Note availability varies by state.  
<https://www.afdc.energy.gov/states/>

### 2016 Mid-Atlantic PEV Registrations per Capita (1000)



### Annual Fuel Cost\*



### MD Share of Total U.S. PEVs

**1.44%**

\*based on 15,000 miles/year, MD averages of gasoline price of \$2.68/gallon and \$0.15/kWh of electricity

**Reference:**  
Gasoline and Electricity Price, EIA  
Number of chargers by type, AFDC  
Vehicle fuel efficiency, Fueleconomy.gov  
Registration, IHS Polk Data  
PEV Sales, Hybridcars.com

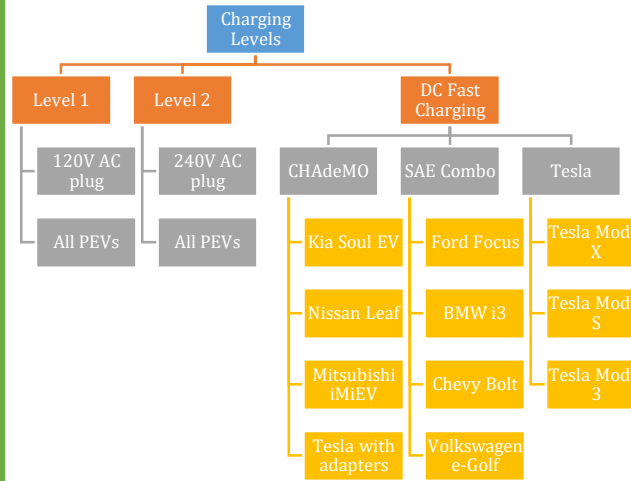
# Maryland Electric Vehicles Fact Sheet

## Charging Your Electric Vehicle:

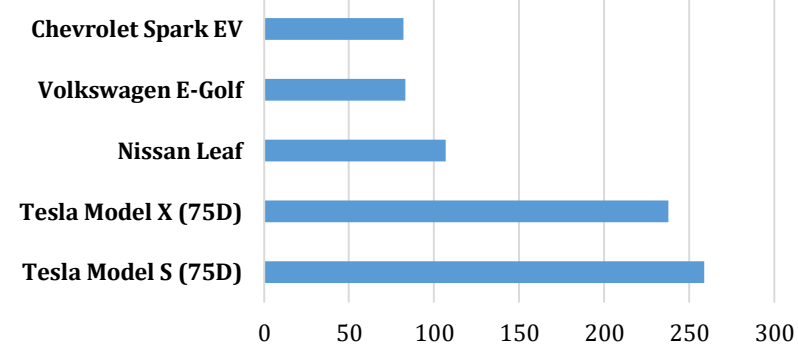
There are three different levels of charging:

- **AC Level 1:** This provides 120 volts of charging, typically found in a home outlet. Overnight charging can replenish an entire PHEV battery, but not all BEV batteries.
- **AC Level 2:** This level provides 240 volts, about 10-20 miles of range per hour of charging. This can be installed for home charging, but is also used for public charging. In the home, it can replenish an entire BEV battery overnight.
- **DC Fast Charging:** This is for rapid charging along heavy traffic corridors. In 20 minutes it can provide enough battery life for a 50-70 miles of range. In ideal conditions of mild temperatures and a low initial charge, a fast charge to 80% will take about 30 minutes for a BEV, but longer in cold weather. There are three types of DC fast charging systems, depending on the vehicle: SAE J1772 combo, ChAdeMO, and Tesla. Adapter is available for Tesla Model S and Model X to use the CHAdeMO chargers.

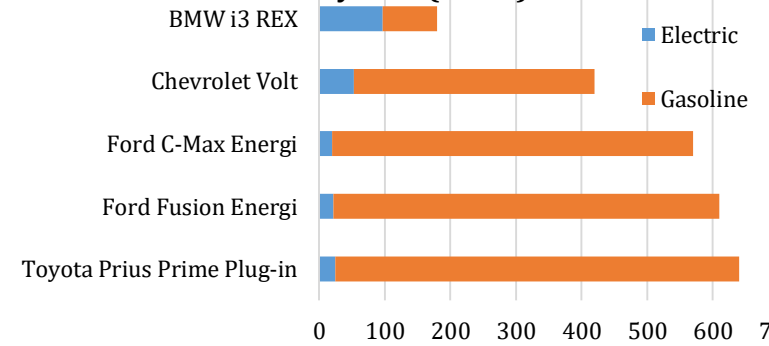
## Charging Levels and Types



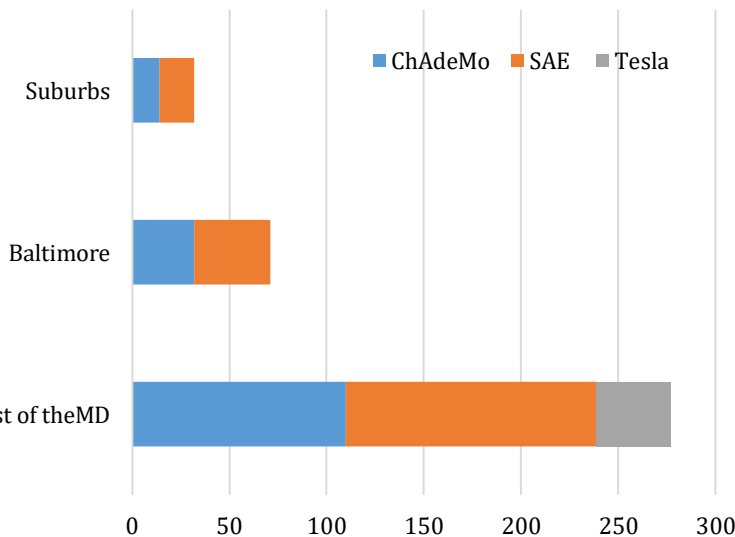
## EPA Rated Range of Top Selling BEV in Maryland (2016)



## EPA Rated Range of Top Selling PHEV in Maryland (2016)



## DC Fast Charging Stations in MD

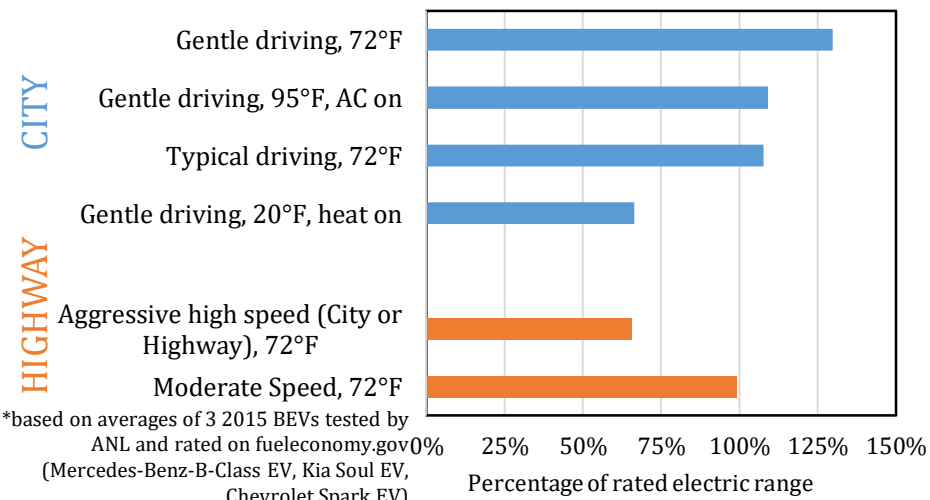


Update to January 18, 2018

## Did You Know?

A full charge can give PHEVs up to 100 miles of electric range and BEVs up to 300 miles of range, depending on the model. These distances can change depending on factors like weather, driving conditions, and driving habits. See on the right how varying your speed, driving behavior, and temperature affect battery range.

## Range Depletion Dependent on Driving and Weather Conditions



\*based on averages of 3 2015 BEVs tested by ANL and rated on fueleconomy.gov  
(Mercedes-Benz-B-Class EV, Kia Soul EV, Chevrolet Spark EV)