

Metropolitan Washington Council of Governments Annual Winter Weather Briefing

Washington Metropolitan Area Transit Authority



November 7, 2019

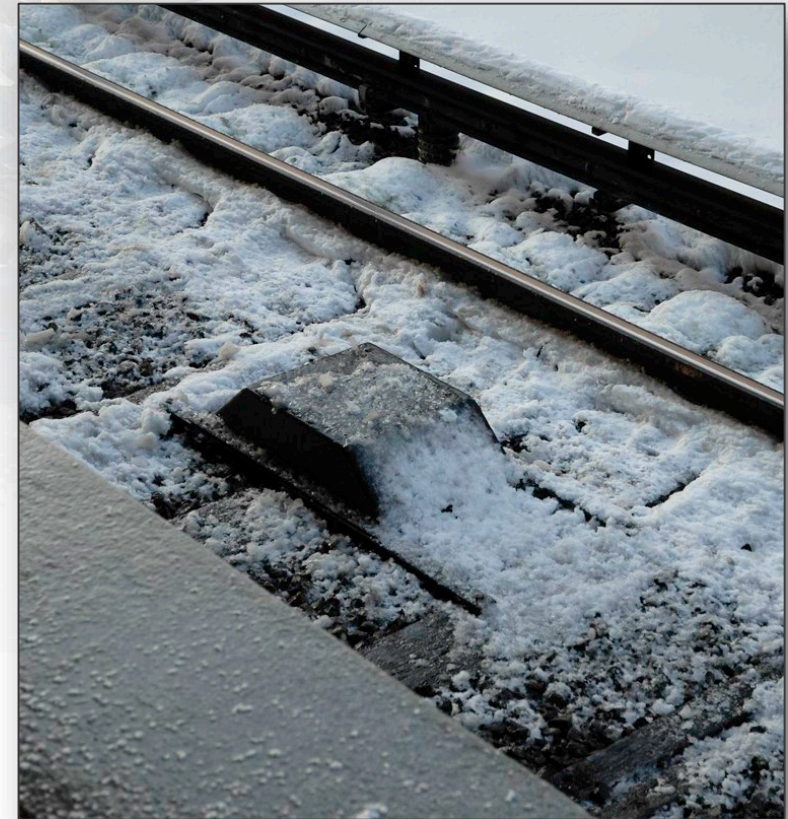
Severe Weather Plan



- Winter Storms Season
 - Snow
 - Ice
- Tropical Storms Season
 - Hurricanes
 - Winds
 - Flooding
 - Severe Thunderstorms
- Heat Season
 - Rail Kinks
 - Air Quality
- Severe Storms
 - Power Outages
 - Flooding

Severe Weather Teams

- Severe Weather Commanders
 - Joseph Leader
 - Metrorail: Lisa Woodruff
 - Metrobus: Bob Potts
- Director, Emergency Management
 - Ron Bodmer
 - OEM Liaisons
- Emergency Operations Center Teams
 - Representatives from different departments
 - Red Team is a standing day shift
 - Blue Team is a standing night shift



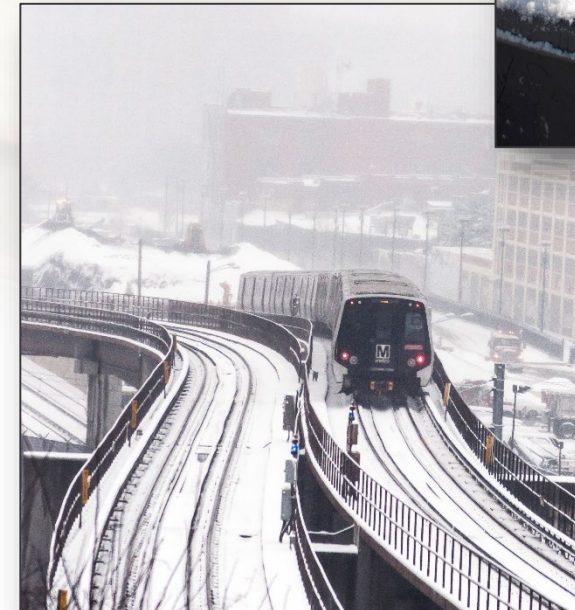
Severe Weather Notifications

- Office of Emergency Management Liaison
 - Tracks weather 24 hours a day, 365 days a year
 - Notifies Weather Teams concerning decisions related to the weather conditions and the activation of the Emergency Operations Center (EOC)
 - Represents WMATA on the MATOC Severe Weather Coordination Working Group



Severe Weather Phases

- Alert
 - Monitor weather forecasts, issue weather advisories
- Readiness
 - Mobilization of resources to include deployment to pre-designated locations
- Operations
 - Activities required to respond to weather condition
- Recovery
 - Provide and restore regular service to Metrorail, Metrobus and MetroAccess

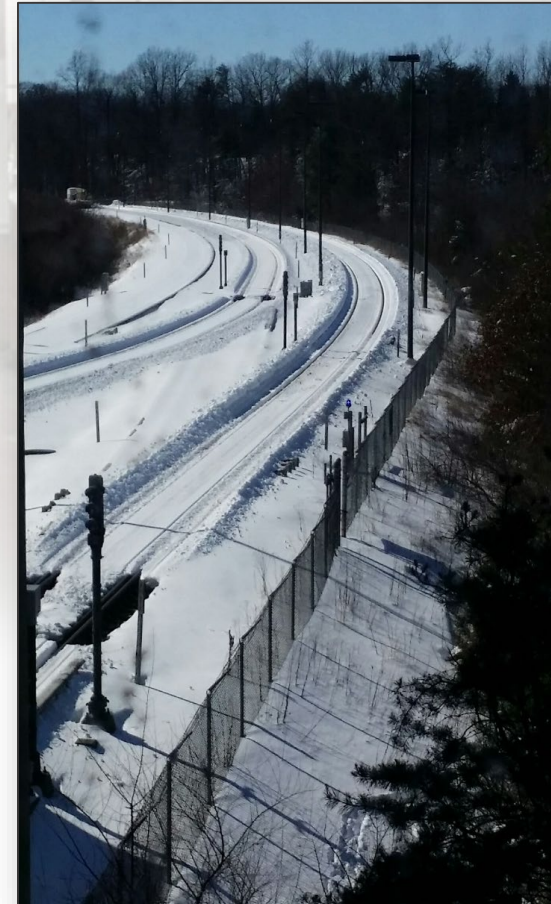


Winter Weather Readiness/Operations



- Levels

- Level 1 (0-2")
- Level 2 (2-4")
- Level 3 (4-8")
- Level 4 (8+")



Level 1

- Weather Conditions
 - 0" to 2" of snow or light collection of snow on surfaces



Metrorail Service

Normal service schedule.

Metrobus Service

Normal schedule operating as roads and traffic permits.

MetroAccess Service

Normal schedule operating as roads and traffic permits.



Level 2

- Weather Conditions
 - 2" to 4" of snow



Metrorail Service

Adjusted service schedule with longer headways.

Metrobus Service

Service suspended on many routes. Operating routes on snow detours.

MetroAccess Service

Normal schedule operating as roads and traffic permit. Outbound trips may be curtailed.



Level 3

- Weather Conditions
 - 4" to 8" of snow



Metrail Service

Limited service schedule with longer headways.

Metrobus Service

Service suspended on all but the busiest routes. Operating routes on snow detours.

MetroAccess Service

Non-essential trips are canceled.



Level 4

- Weather Conditions
 - 8+” of snow



Metrorail Service

No service or limited underground service.

Metrobus Service

Provide at least one hour notice before service suspension.

MetroAccess Service

Suspension of service.



Recovery

- Three (3) phases
 - As tracks and roads are cleared, Metro will reestablished service based on improved surface conditions
- 1. Short-Term: < 12 hours
- 2. Intermediate: 12-72 hours
- 3. Long-Term: > 72 hours



Dedicated De-Icer trains



Questions

