

# Maryland State Rail Plan



## Project Update

*Presented to: Metropolitan Washington Council of Governments,  
National Capital Region Transportation Planning Board*

*Presented by: Maryland Department of  
Transportation*

*Date: January 6, 2022*



# Agenda

- » Purpose of Meeting
- » Background
- » Vision and Goals
- » Rail Service and Investment Program
- » Stakeholder Feedback and Rail Project Categories
- » Wrap Up/Next Steps
- » Questions

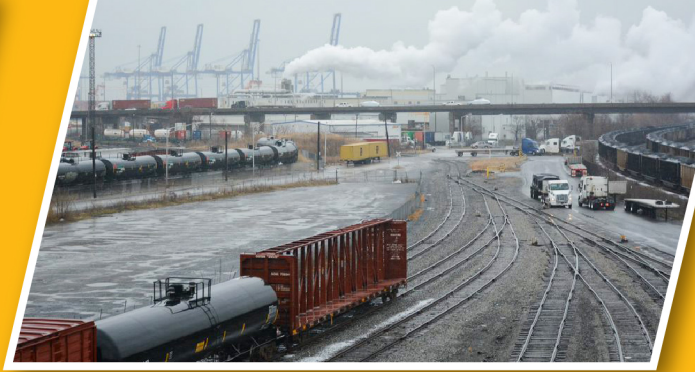


# Purpose of this Meeting

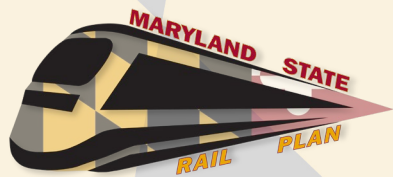
- » To present status and next steps for the Maryland State Rail Plan Update







# Background



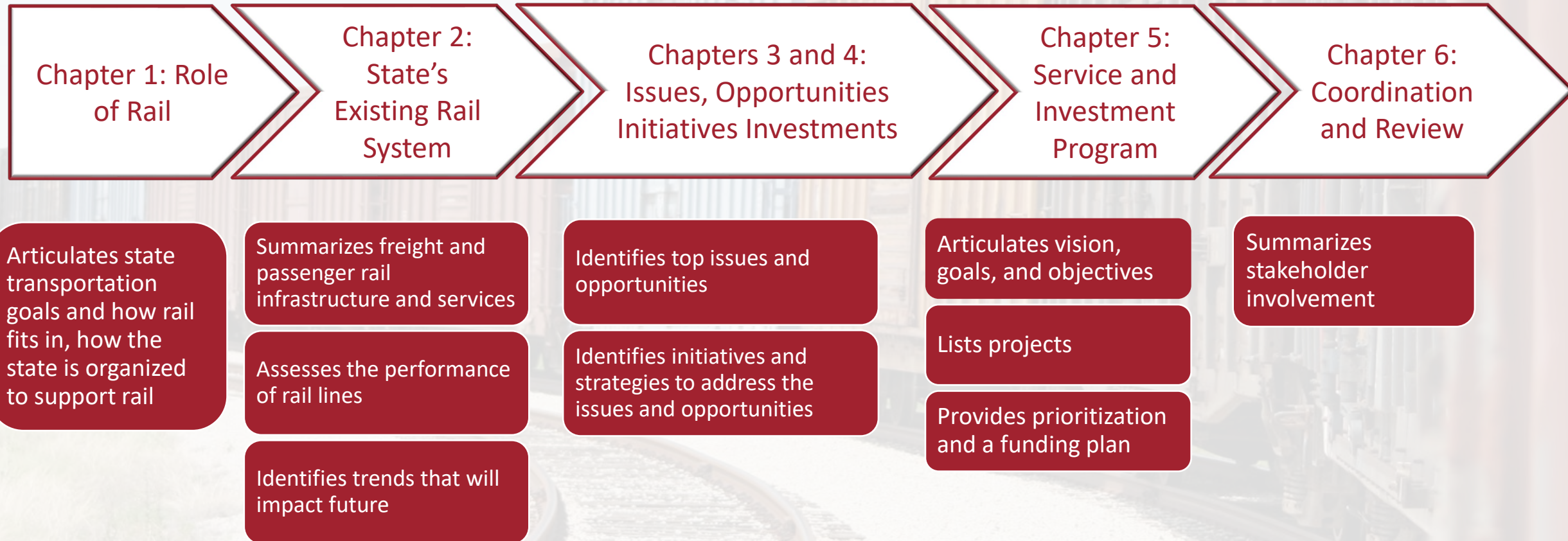


# Why Is Maryland Completing an Update to the State Rail Plan?

- » Federal requirement per the 2008 Passenger Rail Investment and Improvement Act (PRIIA), affirmed in federal surface transportation bills, 4-year update per the FAST Act
- » Positions rail stakeholders for federal funding
- » Outlines public and private investments and policies needed to ensure the efficient, safe, and sustainable movement of freight and passenger by rail



# Background - Plan Outline

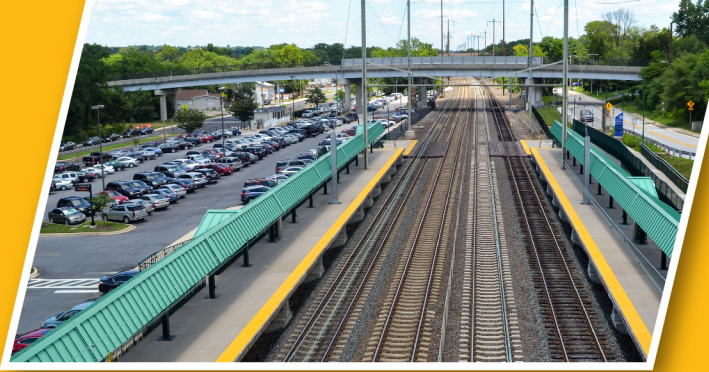




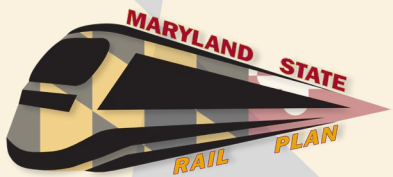
# Outreach Activities To Date

- » Information Request to Railroads: October – November 2020
- » Online Public Survey: November 2020 – January 2021
- » First Advisory Committee Meeting: December 16, 2021
- » Topical Meetings: February - March 2021
- » Interviews: April 2021
- » Second Advisory Committee Meeting: May 19, 2021
- » Outreach to Adjoining States and District of Columbia: Autumn 2021





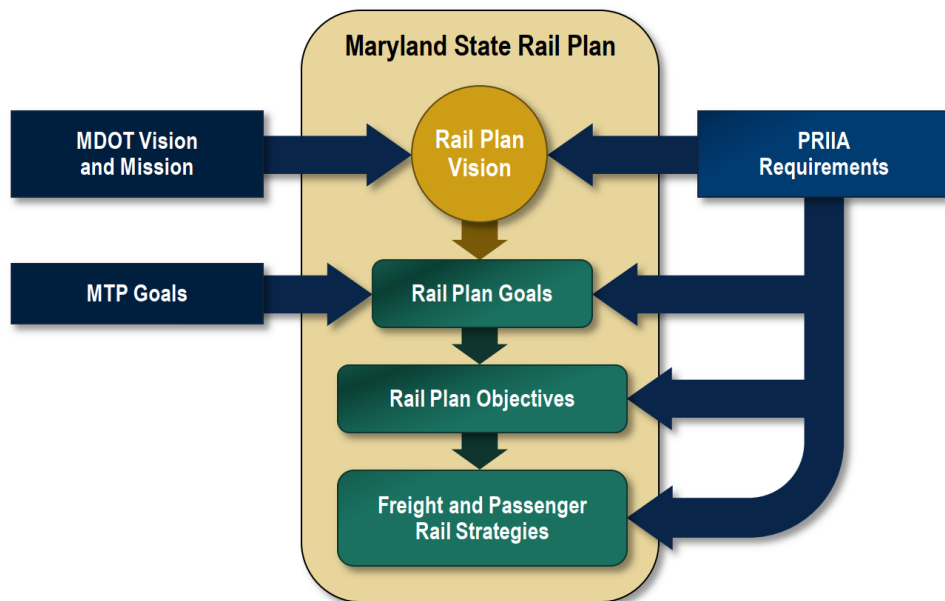
# Rail Plan Vision and Goals





# State Rail Plan Vision

## Guiding the Rail Plan



## 2021 Statewide Rail Plan Vision

*“Freight and passenger rail is a well-maintained, sustainable and intermodal component of the transportation system that supports the equitable, safe, convenient, and efficient movement of people and goods within and through Maryland.”*



# 2021 State Rail Plan Goals

## 2021 State Rail Plan Goals

Ensure a **Safe, Secure, and Resilient** Transportation System

Facilitate **Economic Opportunity**

**Maintain** a High Standard and **Modernize** Maryland's Rail Transportation System

Improve the **Quality** and **Efficiency** of Rail Transportation

Ensure **Environmental** Protection and Sensitivity

Provide Better Transportation **Choices** and **Connections**

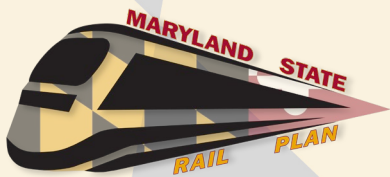
Fiscal Responsibility







# Rail Service and Investment Program



# 2022 Rail Service and Investment Program

- » Rail Service and Investment Plan is an FRA requirement for State Rail Plans
- » Provides a fiscally unconstrained list of rail infrastructure projects
- » MDOT considering phasing according to project readiness, sponsor priorities, and funding opportunities
- » Grouped by Category
  - Passenger
  - Freight
  - Grade Crossings and Safety





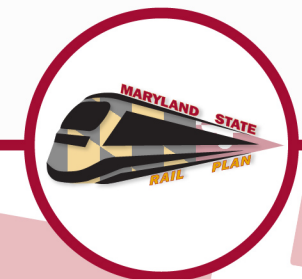
# Determining Project Readiness and Priorities

## » Project Readiness

- Phase of development and cost estimate
  - Concept; no engineering or environmental documentation
  - Preliminary Engineering and/or NEPA complete
  - Ready for construction
- Consistency with anticipated funding program or source
- Status of negotiations and agreements

## » Project priority

- Support of project sponsor/owner



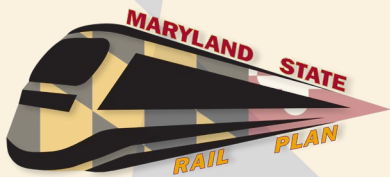
# MDOT Rail Funding

- » Funding sources for rail projects in Maryland are limited
- » MARC operating and capital program support funded through annual appropriations and FTA formula grants
- » MDOT MTA Freight program support of state-owned freight lines through annual appropriations
- » FHWA Section 130 highway-rail grade crossing improvement program currently administered by MDOT SHA
- » Other funding sources
  - Competitive multimodal grant programs





# Passenger Rail

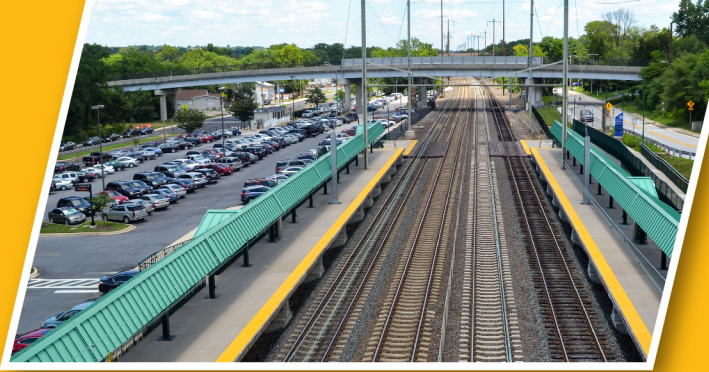




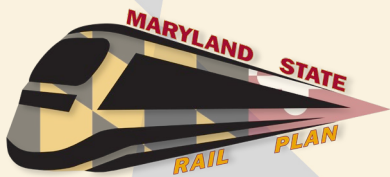
# Passenger Rail Project Categories

- » Northeast Corridor State of Good Repair
- » Northeast Corridor Capacity Between Washington and Baltimore
- » Connectivity Between Services
- » Logistics of MARC Service
- » Station Projects
- » New and Expanded Service





# Freight Rail



# Stakeholder Feedback - Port of Baltimore and Intermodal

- » Baltimore's strategic inland location in Northeast megaregion, potential for double stack service with Howard Street Tunnel project
- » Operating and capacity improvements
  - Seagirt
  - Other potential facilities
- » NEC as a key freight corridor between Perryville and Baltimore, double stack access
- » Encroachment of residential developments
- » Inland port, shuttle train opportunities, other intermodal





# Stakeholder Feedback – Rail and Economic Development

- » The role of rail in economic development varies by region in Maryland
  - Viability of sectors like agriculture, mining, or heavy industry depends upon the location in the state
- » Multiple perspectives on the role of economic development agencies in marketing rail and maintaining data sources
- » Desire for industrial access program to support rail projects
  - Cited neighboring states such as Virginia and Pennsylvania as examples



# Stakeholder Feedback – New Freight Opportunities

- » Freight opportunities on excursion railroads
  - Western Maryland Scenic Railroad
  - Walkersville Southern Railroad
- » George's Creek Railroad freight opportunities
- » New services will depend on the economic and operating feasibility of the entire rail move
  - Class I and other connections within the route



# Freight Rail Project Categories

- » Port and Intermodal Projects
- » Projects on Short Line and Excursion Railroads
- » Other Projects on Class I Railroads





# Safety/Grade Crossings

- » FRA data indicate that trespasser strikes may be a greater concern in Maryland than highway-rail grade crossing accidents
- » Direction for Maryland's highway-rail grade crossing safety program is to be provided by upcoming Grade Crossing Safety Action Plan



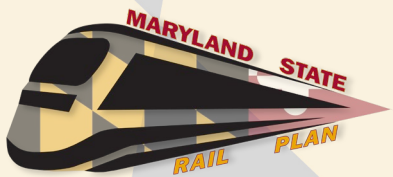
# Stakeholder Feedback - State Organizational Concerns

- » Recommendation to consolidate rail functions in one state group





# Wrap Up





# Next Steps

- » Finalize Draft Rail Plan
- » MDOT Internal
- » Public Review
- » Submittal to FRA for review and approval

## Contact:

Harry Romano, Rail Program and Policy Manager, MDOT, 410-684-7063, [hromano@mdot.maryland.gov](mailto:hromano@mdot.maryland.gov)  
Rail Plan Web page: [https://bit.ly/MD\\_StateRailPlan](https://bit.ly/MD_StateRailPlan)



# Questions/Comments?

