

# Visualize 2045: Update to the Equity Emphasis Areas

Sergio Ritacco  
Transportation Planner

Transportation Planning Board  
June 20, 2018

Item #11



# Purpose

---

- Briefing on updated Equity Emphasis Areas (EEAs)



# Background

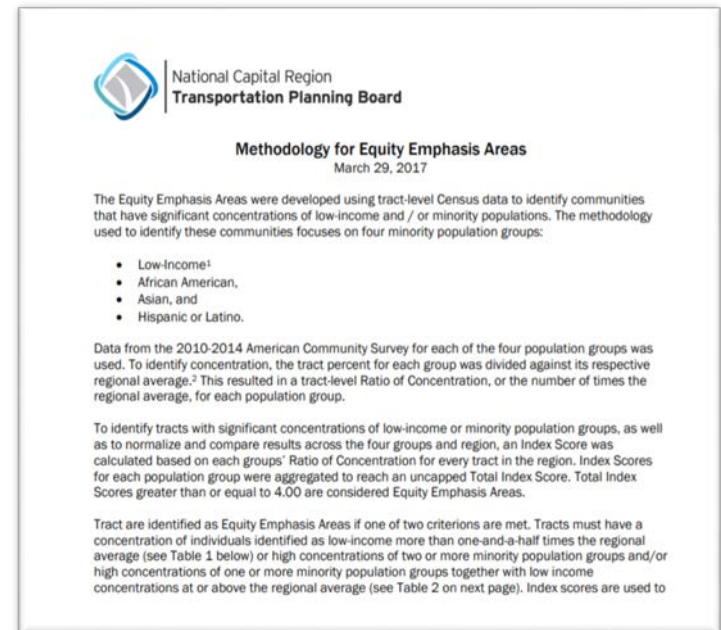
---

- The TPB adopted EEA methodology in March 2017 to enhance how the long-range plan is analyzed for Title VI and Environmental Justice (EJ) considerations
- Using the TPB-approved methodology, the EEAs were updated with the most recent American Community Survey data
- The EEA's will be used to analyze Visualize 2045 for disproportionate impacts on low-income and minority populations
- TPB staff will update the EEAs with the latest data in conjunction with each major plan update (every 4 years)



# TPB Approved Methodology

- American Community Survey data by Census tract for 4 groups: Low-Income, African American, Asian, and Hispanic/Latino
- Index scores determined for every tract based on regional averages for the 4 groups
- Index scores are totaled and a tract is an EEA if the total score exceeds established thresholds
- Income is weighted more heavily than race or ethnicity



For more detail:

<https://www.mwcog.org/transportation/planning-areas/fairness-and-accessibility/environmental-justice/equity-emphasis-areas/>



# EEAs for Visualize 2045

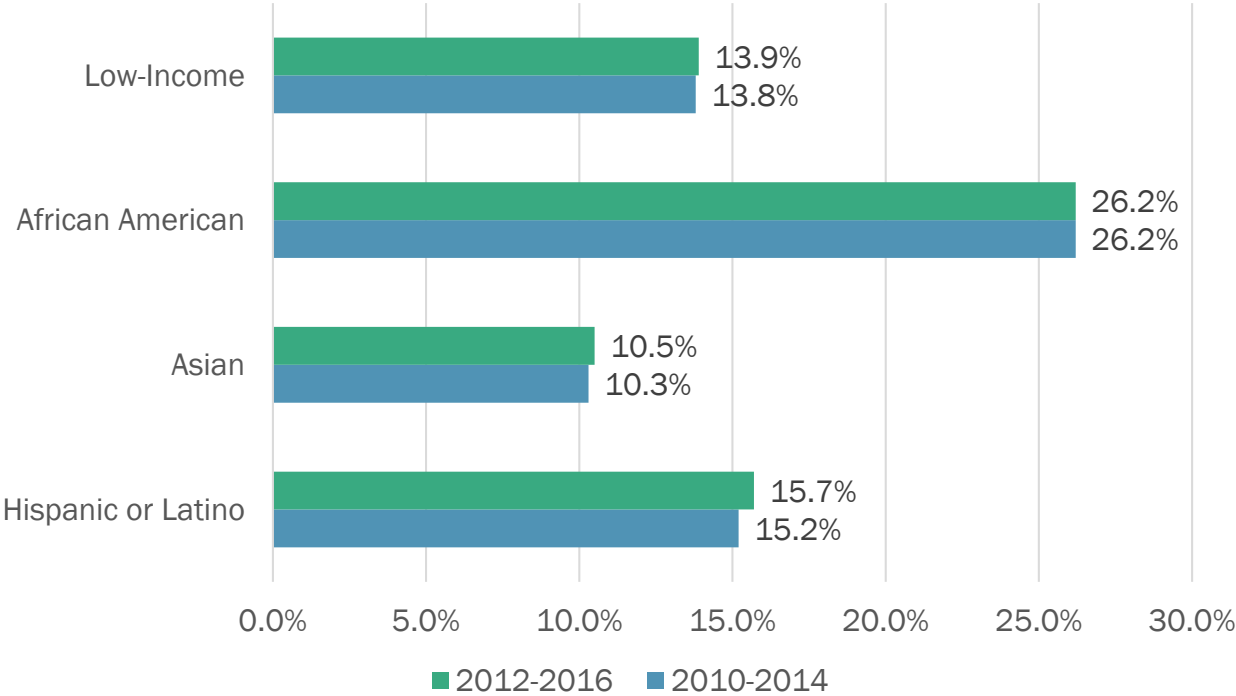
---

- The original EEA map produced in 2017 used 2010-2014 5-year estimates from the American Community Survey (ACS)
- In preparation for Visualize 2045 analysis, staff updated the EEAs using the latest ACS data: 2012-2016 5-year estimates
- The updated EEA map shows:
  - Some localized changes because values already were close to thresholds
  - Minimal change at the regional level; clusters remain largely the same



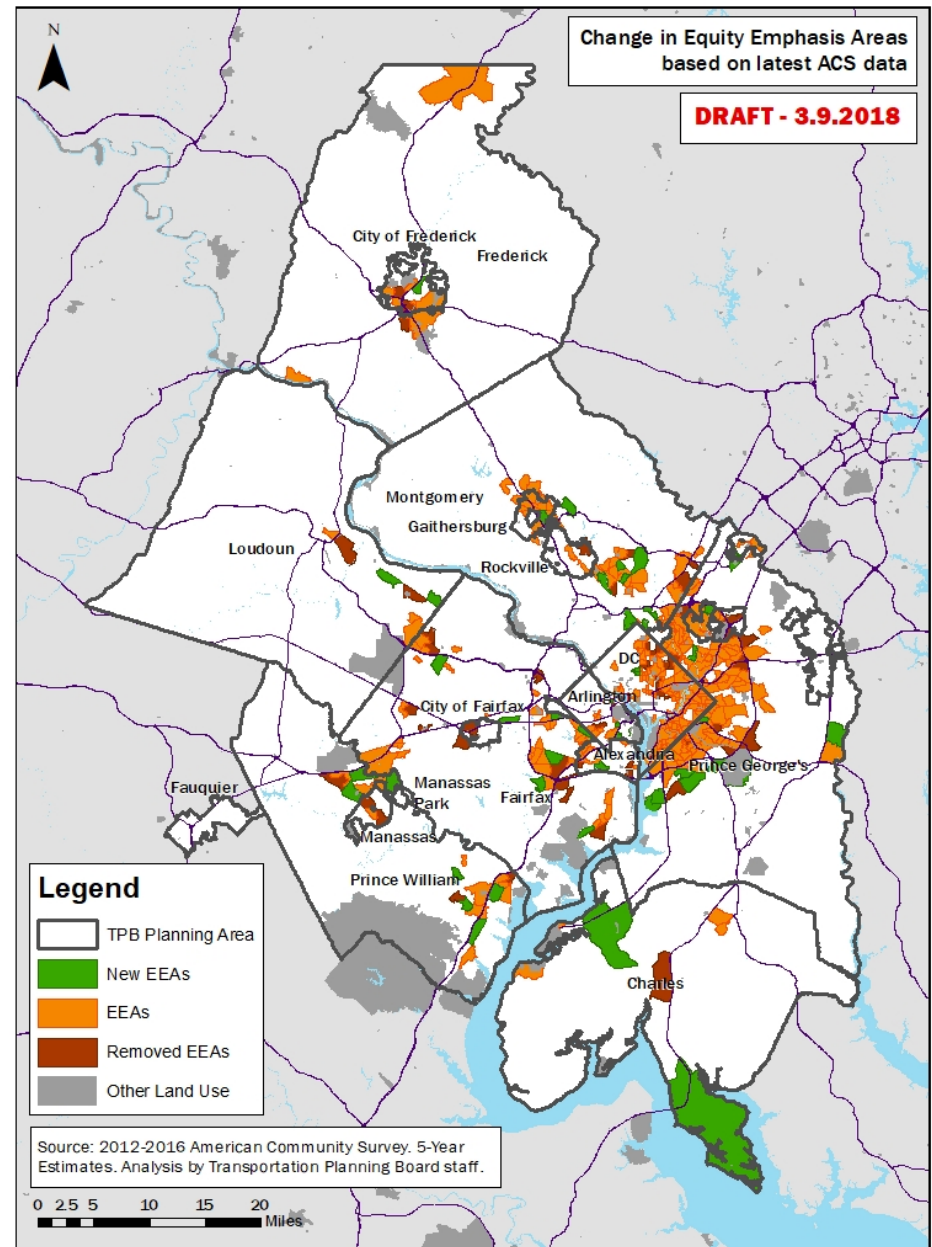
# Changes in Regional Average between American Community Survey datasets

2010-2014 versus 2012-2016 American Community Survey 5-Year Estimates



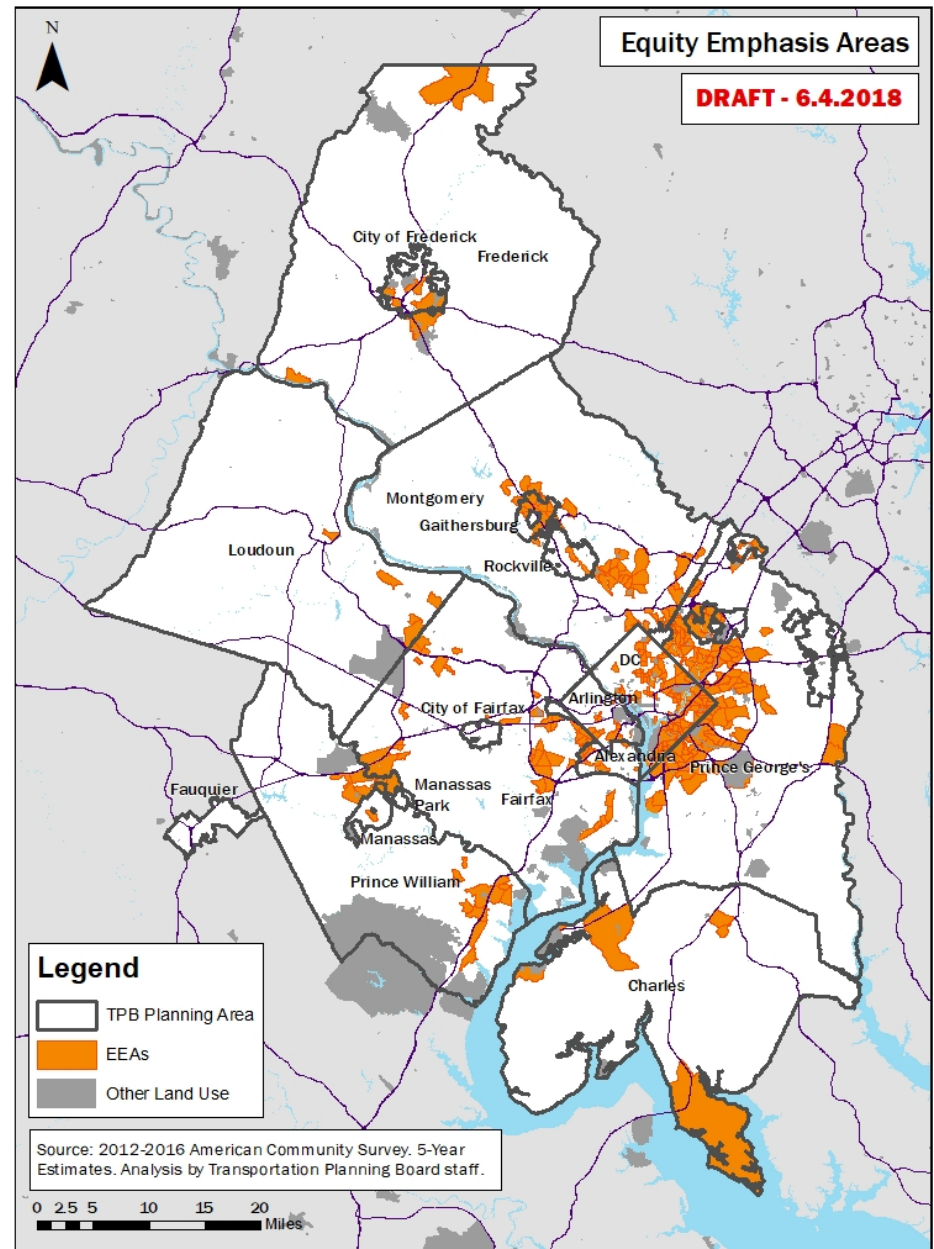
# Changes to the EEAs

Between Original and Updated EEAs



# Updated EEAs

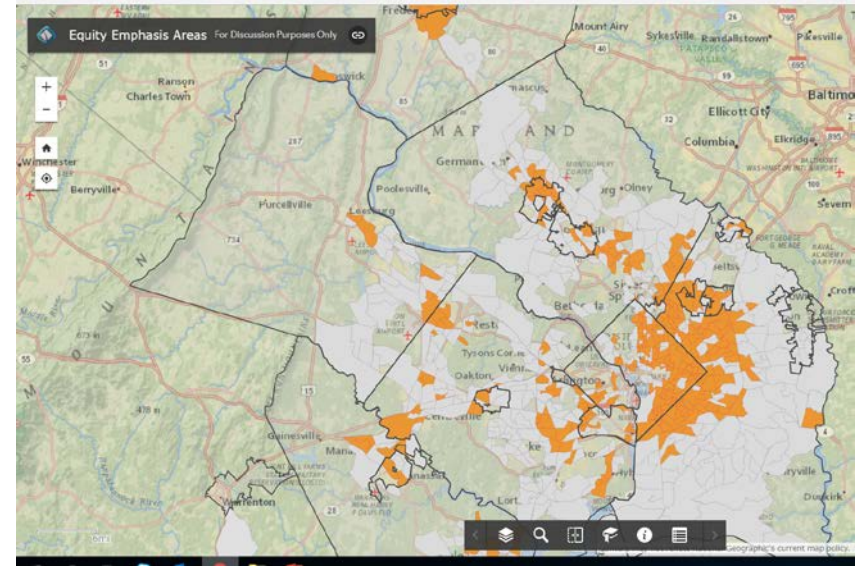
Based on 2012- 2016 ACS 5-Year Estimates and TPB-Approved Methodology





# EEA's and Visualize 2045 Analysis

- Staff will revise the online interactive map
- Staff will conduct the analysis of Visualize 2045 and compare regional accessibility and mobility in EEA's versus the rest of the region
- TPB will be briefed on the results in the Oct/Nov/Dec timeframe



Online interactive map: [gis.mwcog.org/webmaps/tpb/clrp/ej/](https://gis.mwcog.org/webmaps/tpb/clrp/ej/)



---

## Sergio Ritacco

Transportation Planner  
(202) 962-3232  
[sritacco@mwcog.org](mailto:sritacco@mwcog.org)

## Wendy Klancher, AICP

Principal Transportation Planner  
(202) 962-3321  
[wklancher@mwcog.org](mailto:wklancher@mwcog.org)

[visualize2045.org](http://visualize2045.org)

---

Metropolitan Washington Council of Governments  
777 North Capitol Street NE, Suite 300  
Washington, DC 20002

