

A REVIEW OF ROADWAY SAFETY IN THE NATIONAL CAPITAL REGION

TPB Roadway Safety Summit

Vanessa Holt, Chair
TPB Transportation Safety Subcommittee

October 31, 2024



National Capital Region
Transportation Planning Board

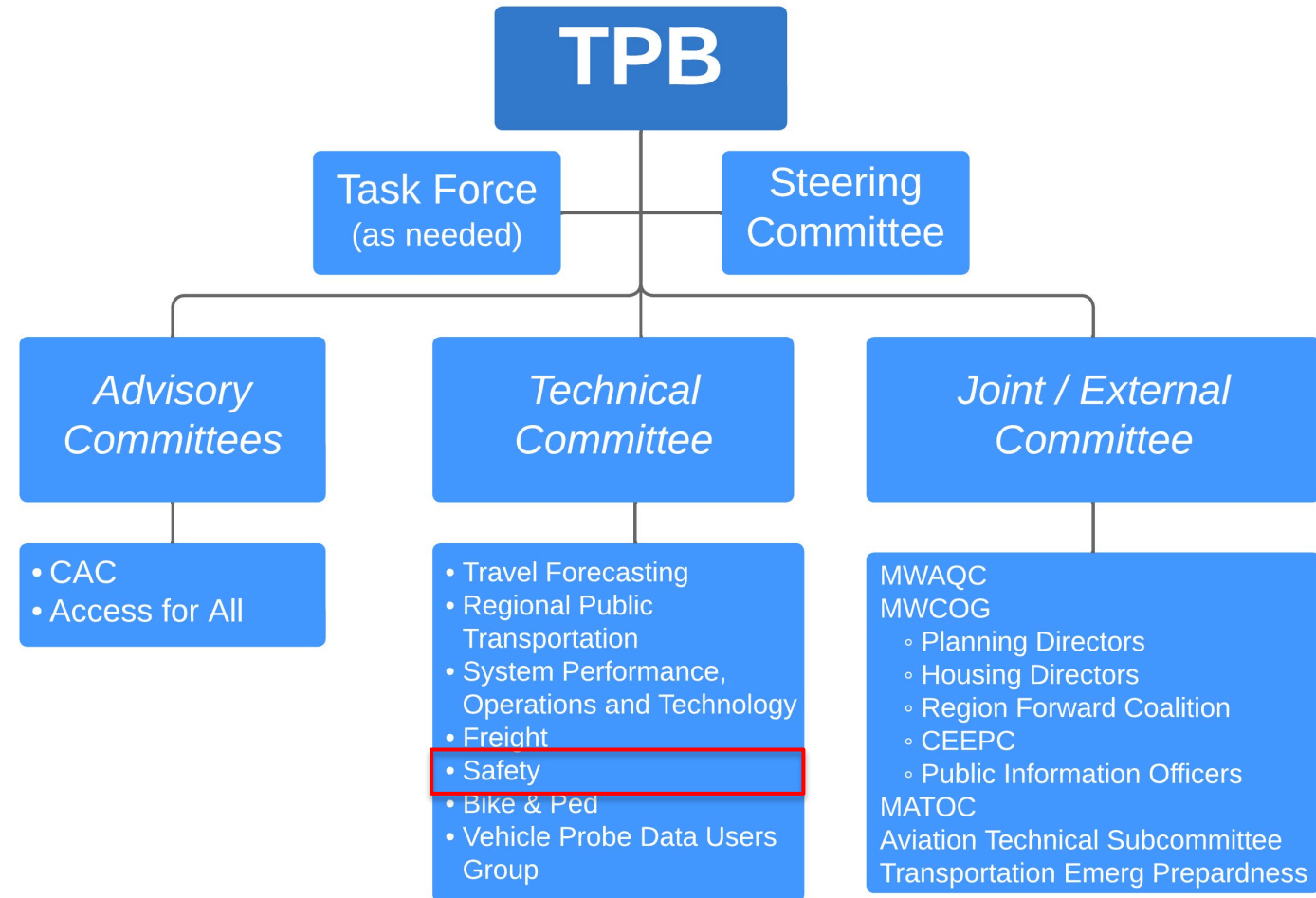
Overview

- About the TPB Transportation Safety Subcommittee
- Preview of new DRAFT Information from the Ongoing Staff/Consultant Transportation Safety Data Deep Dive (to Be Completed Spring 2025):
 - Overview of Crashes, Fatalities, and Serious Injuries in the Region
 - Crash Types by Category
 - Involved Factors
- Preview of latest DRAFT Information for the TPB's Annual Performance-Based Planning and Programming Target Setting and Tracking (Preview of Draft Information to Be Presented to the TPB on November 20)
- Summary



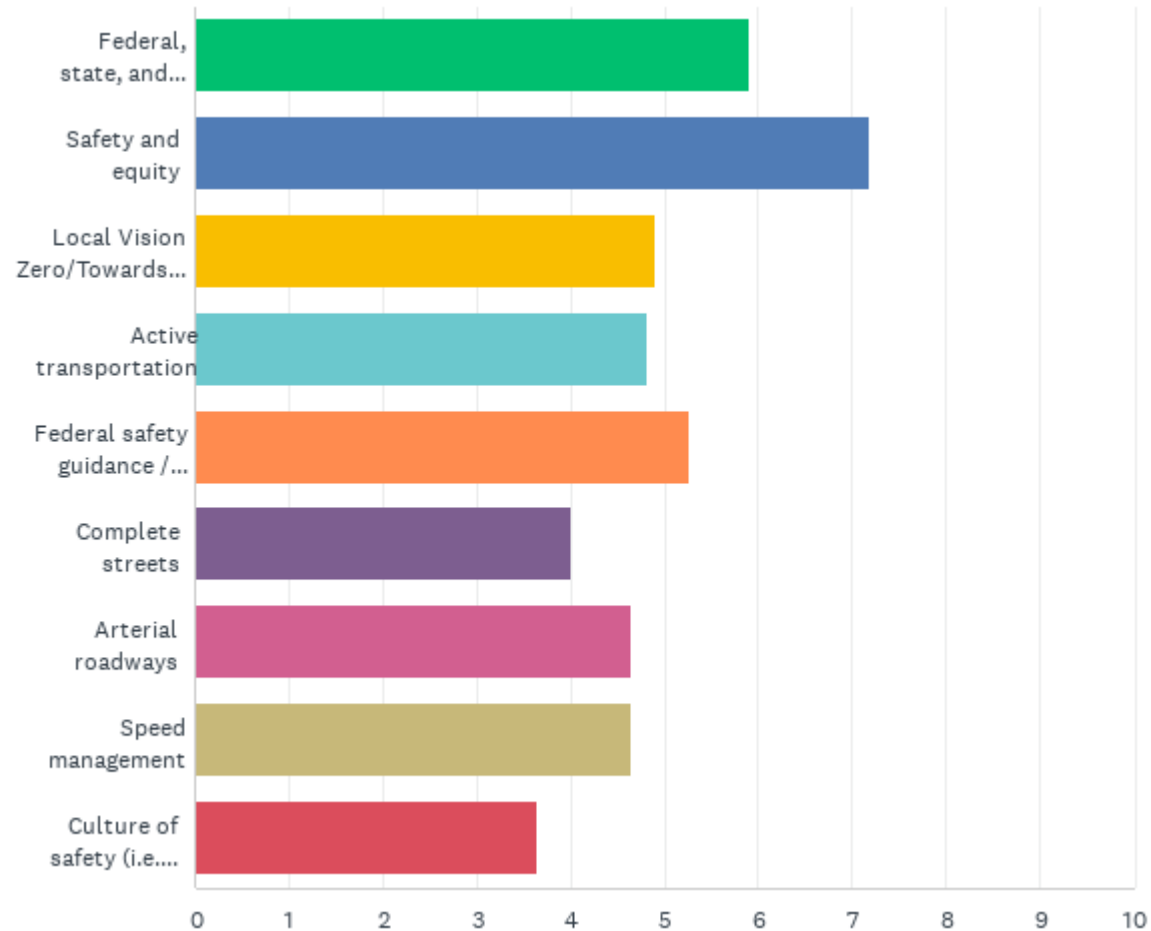
About the TPB Transportation Safety Subcommittee

- Subcommittee was established in 2012 with the mission of:
 - Provides opportunities to exchange information
 - Learn about best practices and emerging trends in roadway safety
 - Integrating roadway safety issues into the regional long-range planning process



Subcommittee Meeting Topics

Poll Results of Subcommittee Participants



Themes

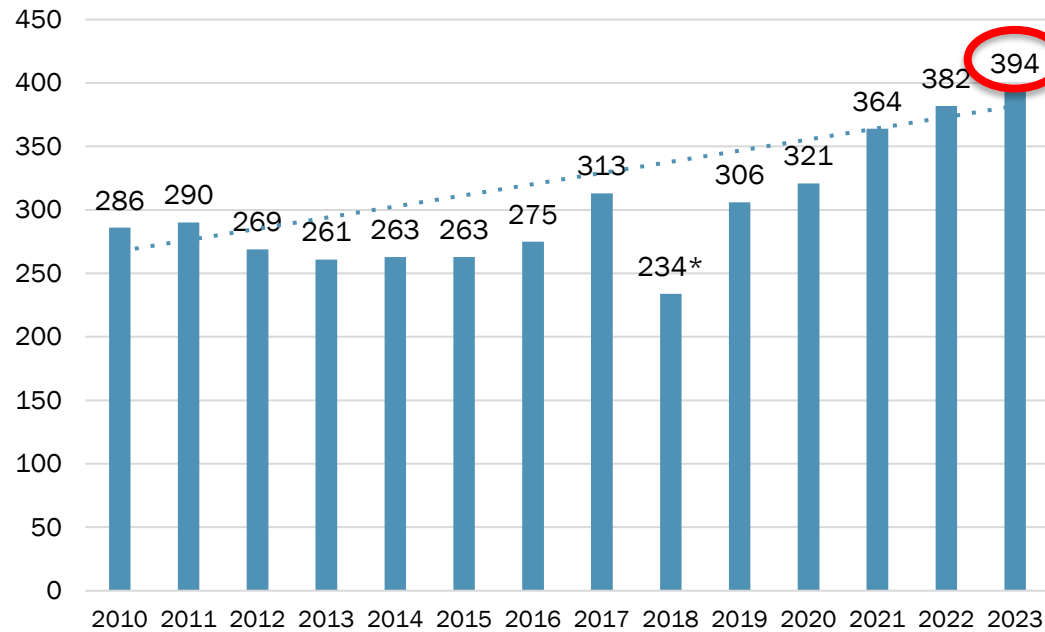
- Safety and equity
- Federal safety guidance/requirements
- Local Vision Zero/Towards Zero Deaths programs
- Active transportation
- Speed management; arterial roadways

- Recent topic: quick-build projects



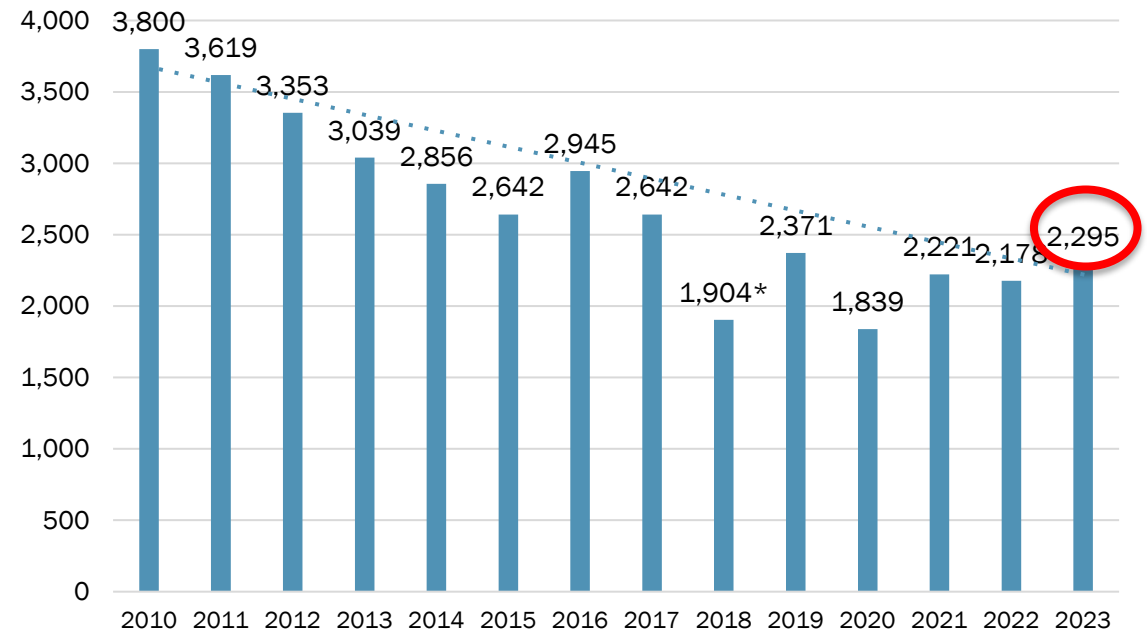
New **DRAFT** Information from Ongoing Deep Dive

TPB Region Fatalities 2010-2023



*Data from 2018 uncertain due to technical factors.

TPB Region Serious Injuries 2010-2023

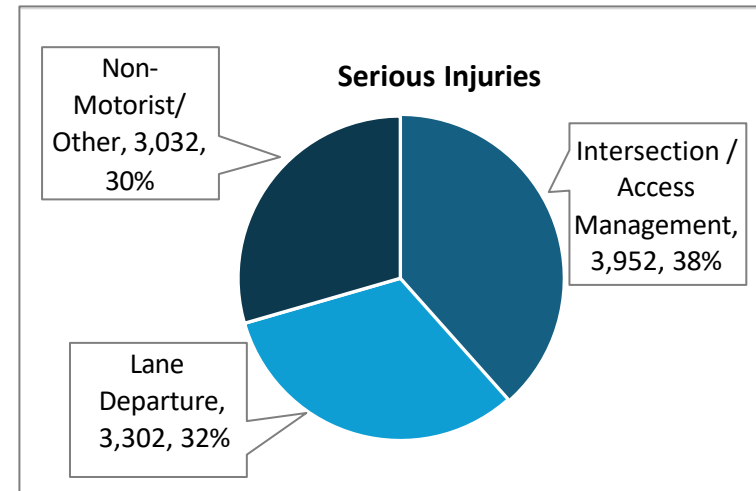
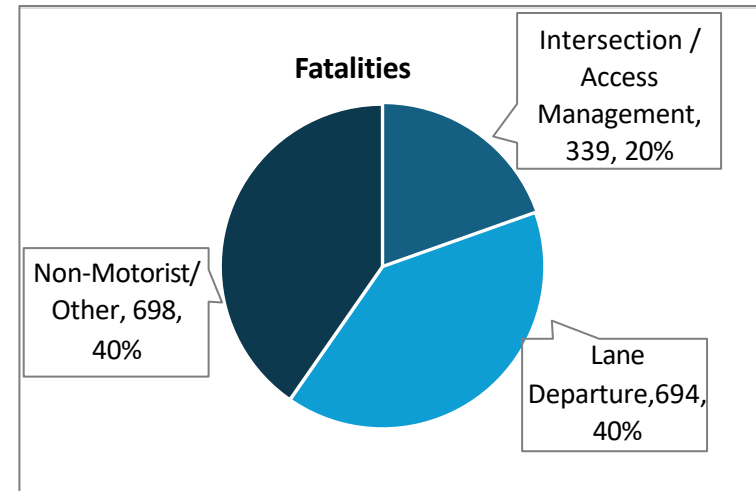


Source: Compiled from DDOT, MDOT, and VDOT sources.

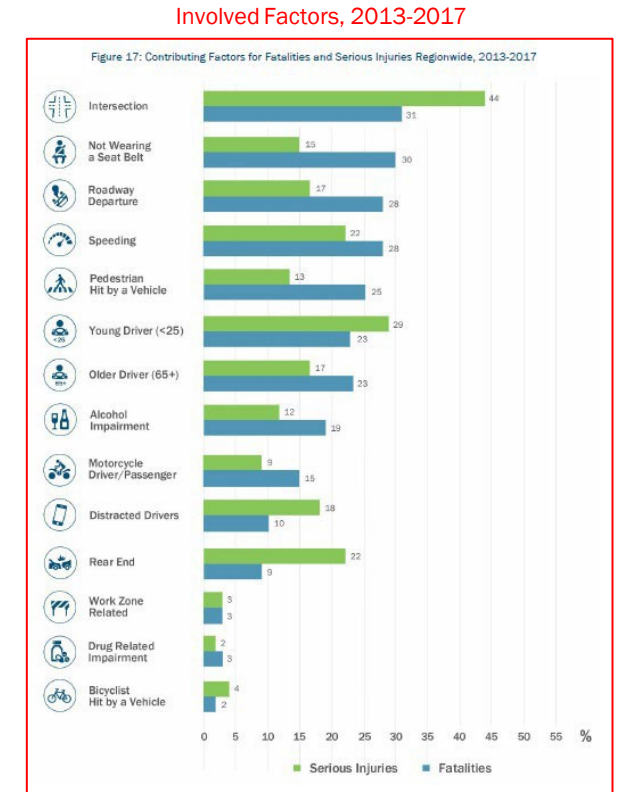
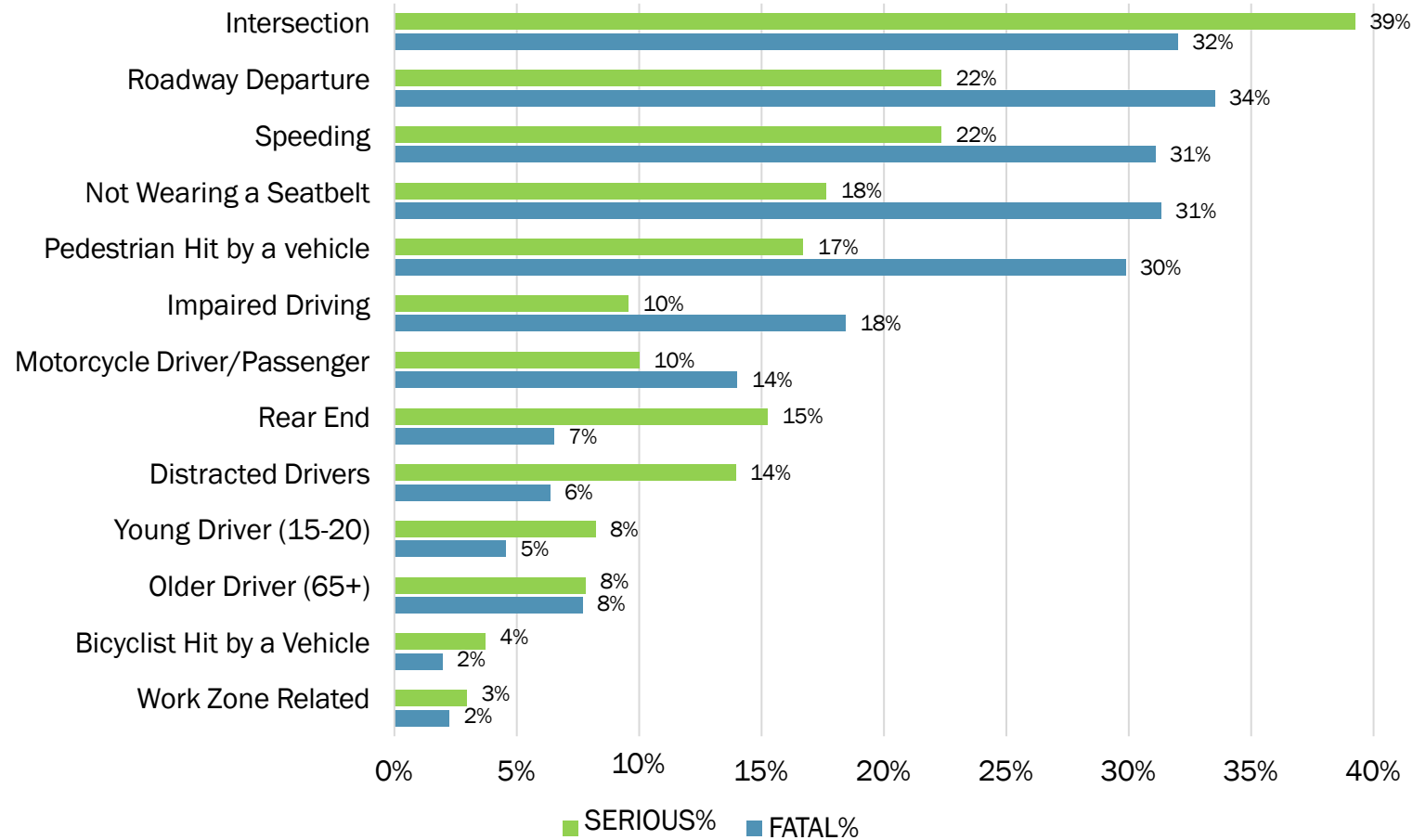


Crash Types by Category, 2019-2023 **DRAFT**

Crash Type	Fatalities	Serious Injuries
Ran Off Roadway/ Fixed Object	548	2,136
Pedestrian	506	1,639
Angle	178	1,888
Other/Non-Collision	154	975
Head On	118	746
Rear End	113	1,568
Left Turn	48	496
Sideswiped	28	420
Bicyclist	28	278
Parked Vehicle	9	115
Backing	1	25
Total	1,731	10,286



Involved Factors for Fatalities and Serious Injuries Regionwide, 2019-2023 **DRAFT**



Source: DDOT, MDOT, VDOT

* Note Younger Driver definition change compared to 2013-2017 (<20 instead of <25)
* Note that Alcohol and Drug are combined into "Impaired", whereas 2013-2017 separates them

New Draft Data toward Annual TPB Target Setting

- Federal regulations require State DOTs and MPOs to:
 - Adopt annual safety performance targets for five (5) safety performance measures
 - Measure and report progress towards those targets each year
- TPB is scheduled to receive this information in draft form for their November 20 meeting, and adopt updated targets at their December 18 meeting
- The following information previews the draft trend information included in upcoming draft committee materials
 - Today's materials include only the trend information; proposed target information will be shared with the TPB on November 20



Required Highway Safety Performance Measures

Performance Measure	Description
Number of Fatalities (5 year rolling average)	Total number of fatalities during a calendar year
Rate of Fatalities per 100 million VMT (5 year rolling average)	Ratio of total fatalities to VMT
Number of Serious Injuries (5 year rolling average)	Total number of serious injuries during a calendar year
Rate of Serious Injuries per 100 million VMT (5 year rolling average)	Ratio of total serious injuries to VMT
Number of Non-Motorized Fatalities and Serious Injuries (5 year rolling average)	Total number of fatalities and serious injuries during a calendar year

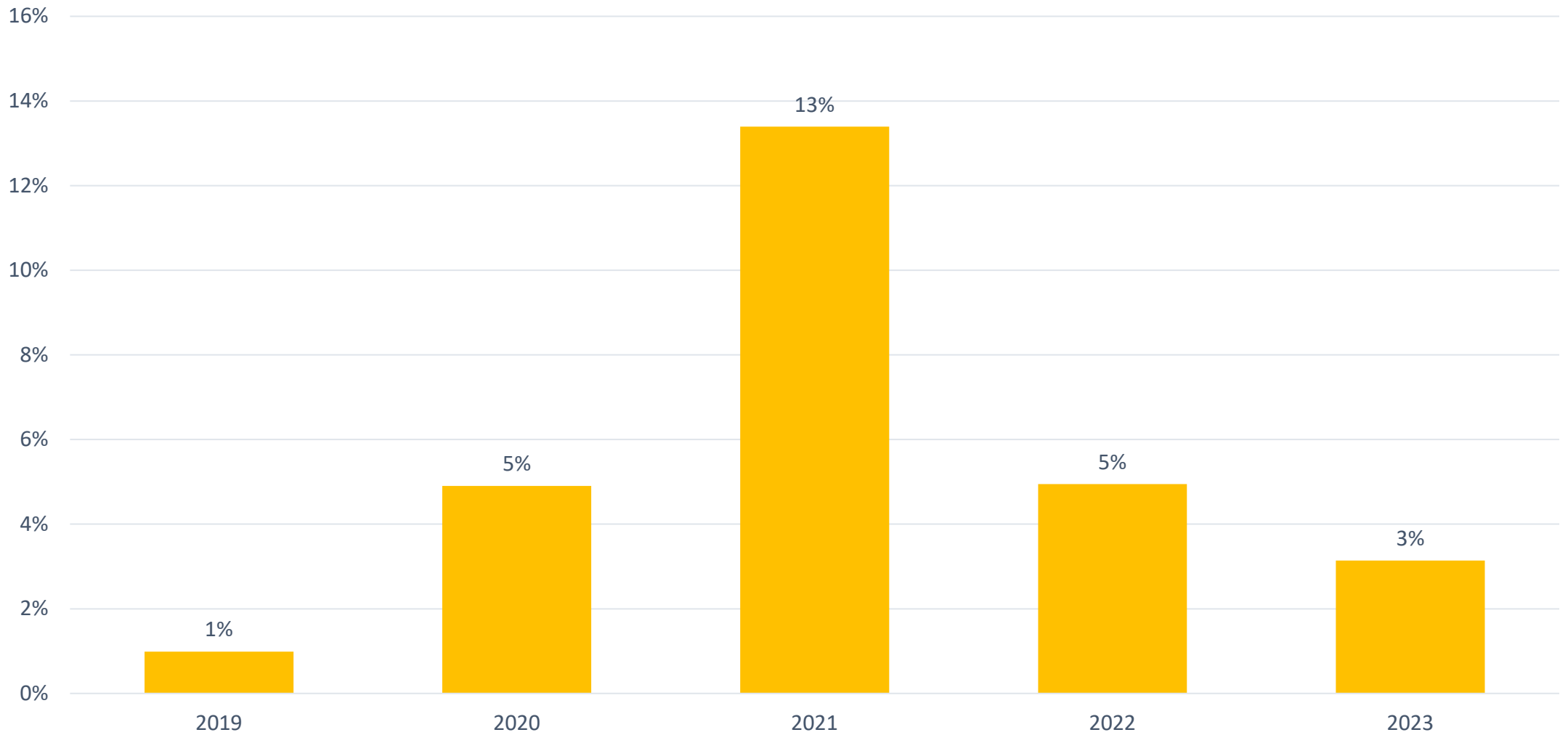


NCR Annual Highway Safety Data: 2019 through 2023

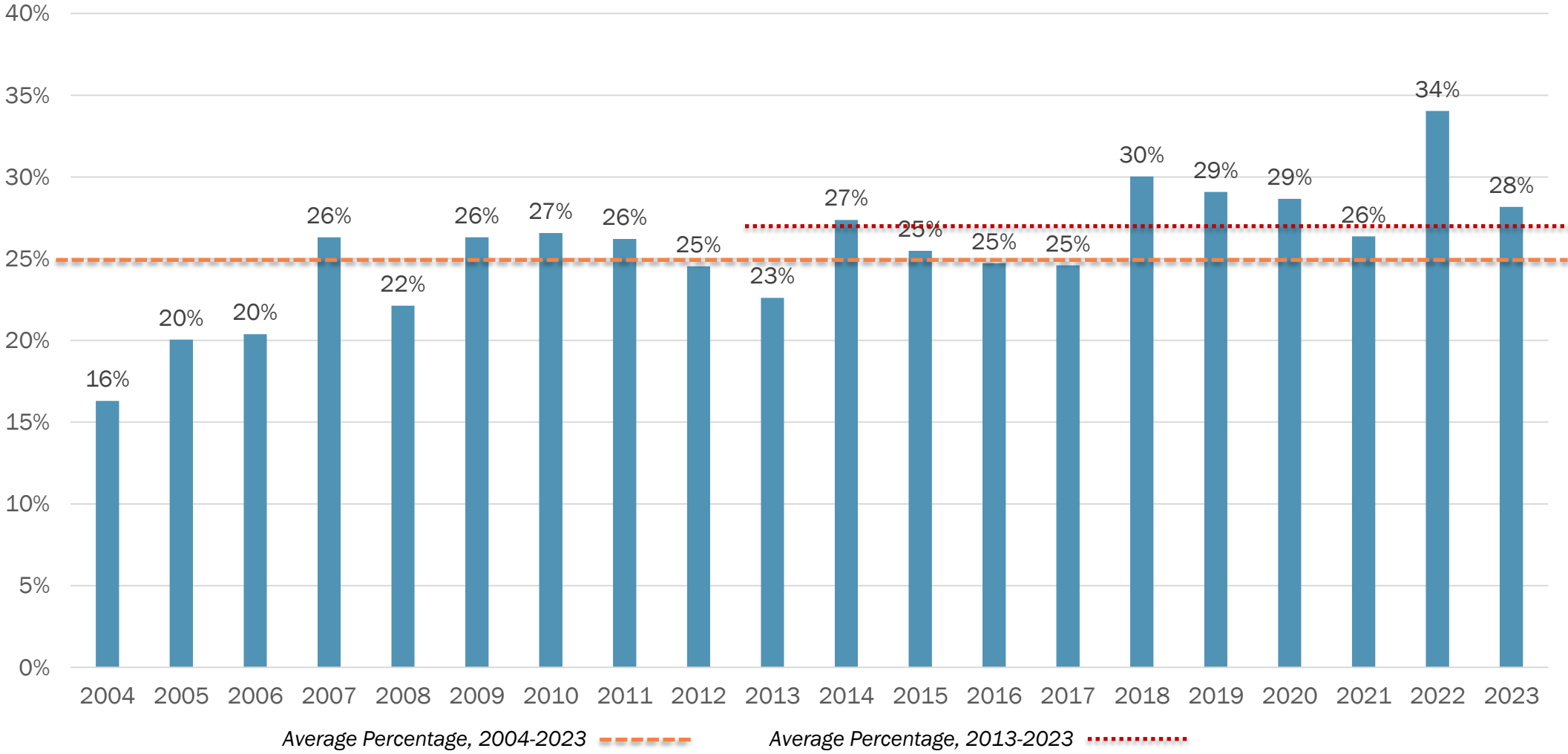
	2019	2020	2021	2022	2023	Change from 2022-2023
# of Fatalities	306	321	364	382	394 ¹	↑ 3.14%
Fatality Rate (per 100 MVMT)	0.673	0.876	0.896	0.940	0.849 ¹	↓ 9.62%
# of Serious Injuries	2,371	1,839	2,221	2,178	2,295	↑ 5.37 %
Serious Injury Rate (per 100 MVMT)	5.211	5.016	5.464	5.358	4.948	↓ 7.66 %
# Nonmotorist Fatalities & Serious Injuries	593	443	520	637	586	↓ 8.01 %
Annual Vehicle Miles Traveled (100 M)	454.97	366.60	406.47	431.91	463.86	↑ 7.4 %



National Capital Region Fatalities: Annual Percent Change



Pedestrian Fatalities as a Proportion of Total Roadway Fatalities



Summary

- Regional fatalities have been rising since reaching a low point in the mid-2010's, with (according to draft data) 394 in 2023
- Regional serious injuries have been on a downward track (improving) since 2010, but there was an uptick in 2023 (according to draft data) to 2,296
- Top involved factors in fatal crashes were intersections, roadway departure, speeding, not wearing a seatbelt, pedestrian hit by a vehicle, and impaired driving
 - Many crashes have more than one involved factor
- Roadway safety worsened during the pandemic, but these worsening trends were already evident before the pandemic
- The Transportation Safety Subcommittee and staff look forward to getting more insights when the ongoing safety data deep dive is completed next spring



Vanessa Holt

Chair, TPB Transportation Safety Subcommittee
mwcog.org/committees/transportation-safety-subcommittee/

mwcog.org

777 North Capitol Street NE, Suite 300
Washington, DC 20002



National Capital Region
Transportation Planning Board