

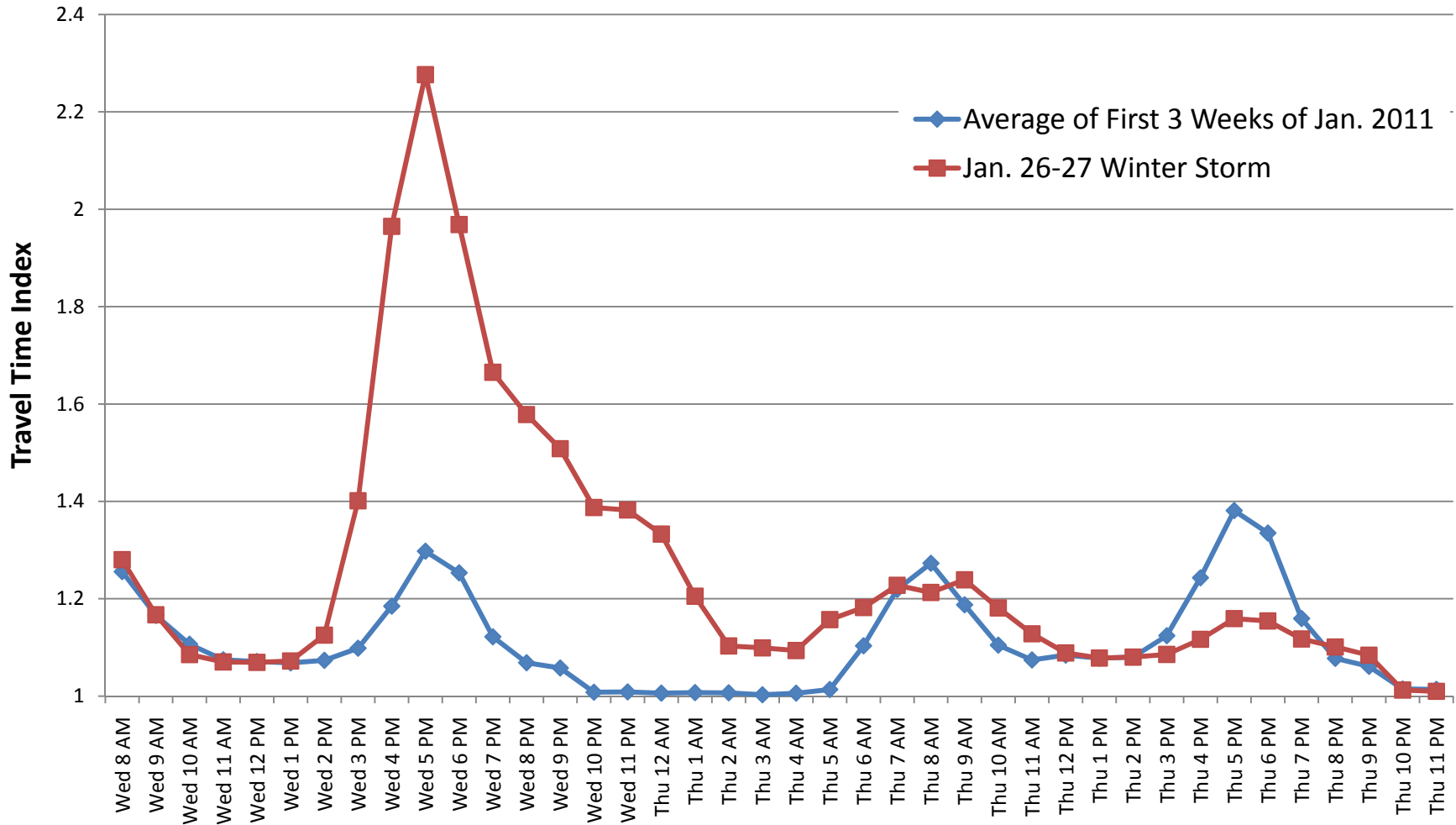
Examples of Highly Congested Segments during the Jan. 26-27 Winter Storm

Highway	Segment	Hour	Speed (mph)	Travel Time Index*
I-495 OL	From Old Georgetown Rd to I-270 Spur	Wed. 8-9 PM	5.4	11.4
I-270 NB	From I-270 Spur to Montrose Rd	Wed. 7-8 PM	5.6	10.8
I-66 WB	From Fairfax Co. Pkwy to Sully Rd	Thu. 0-1 AM	6.4	9.8
I-495 IL	American Legion Bridge	Wed. 5-6 PM	7.4	8.2
I-95 SB	From Franconia Rd to Fairfax Co. Pkwy	Wed. 5-6 PM	7.5	8.3
I-495 OL	Woodrow Wilson Bridge	Thu. 1-2 AM	10.2	5.6

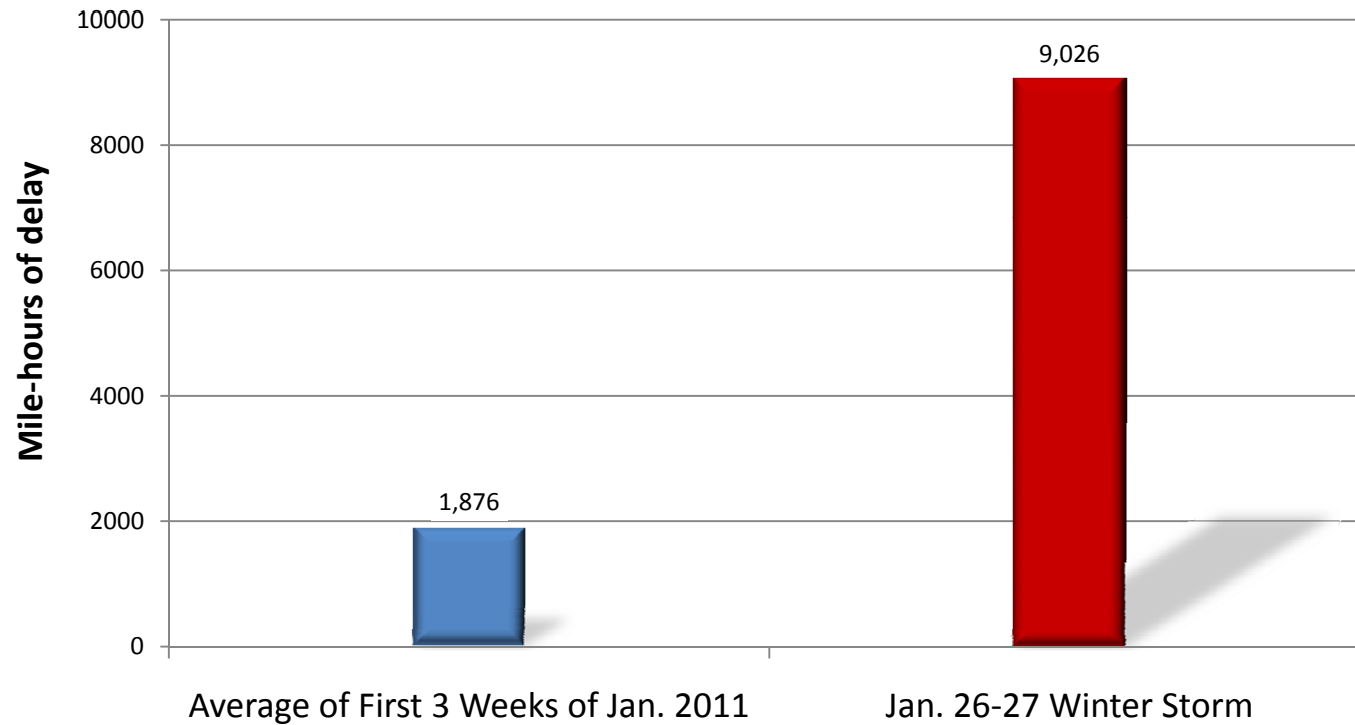
*Travel Time Index = Actual travel time / Free flow travel time

Regional Comparison of Jan. 26-27 Travel Time Index to Average Conditions

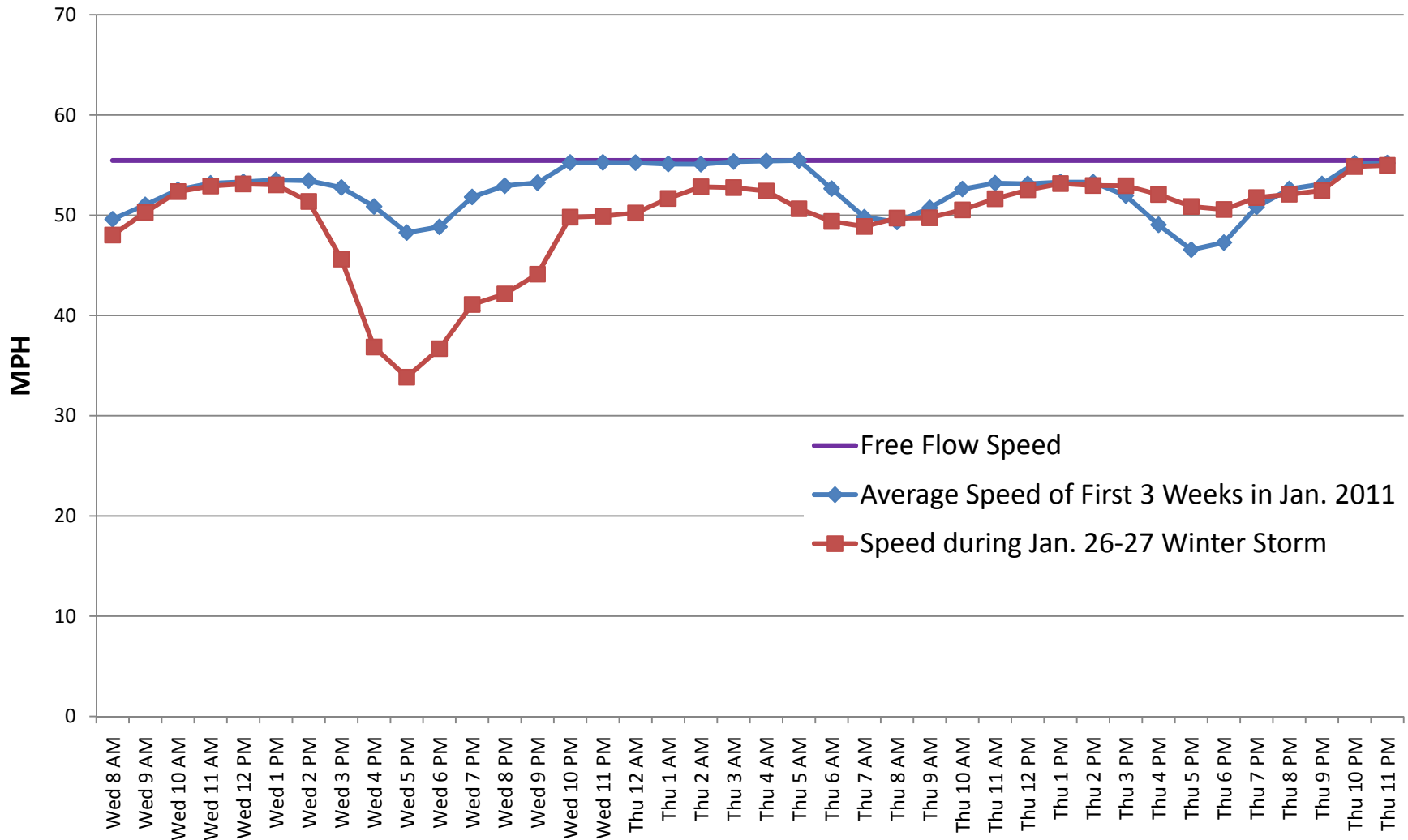
Travel Time Index = Actual Travel Time / Free Flow Travel Time



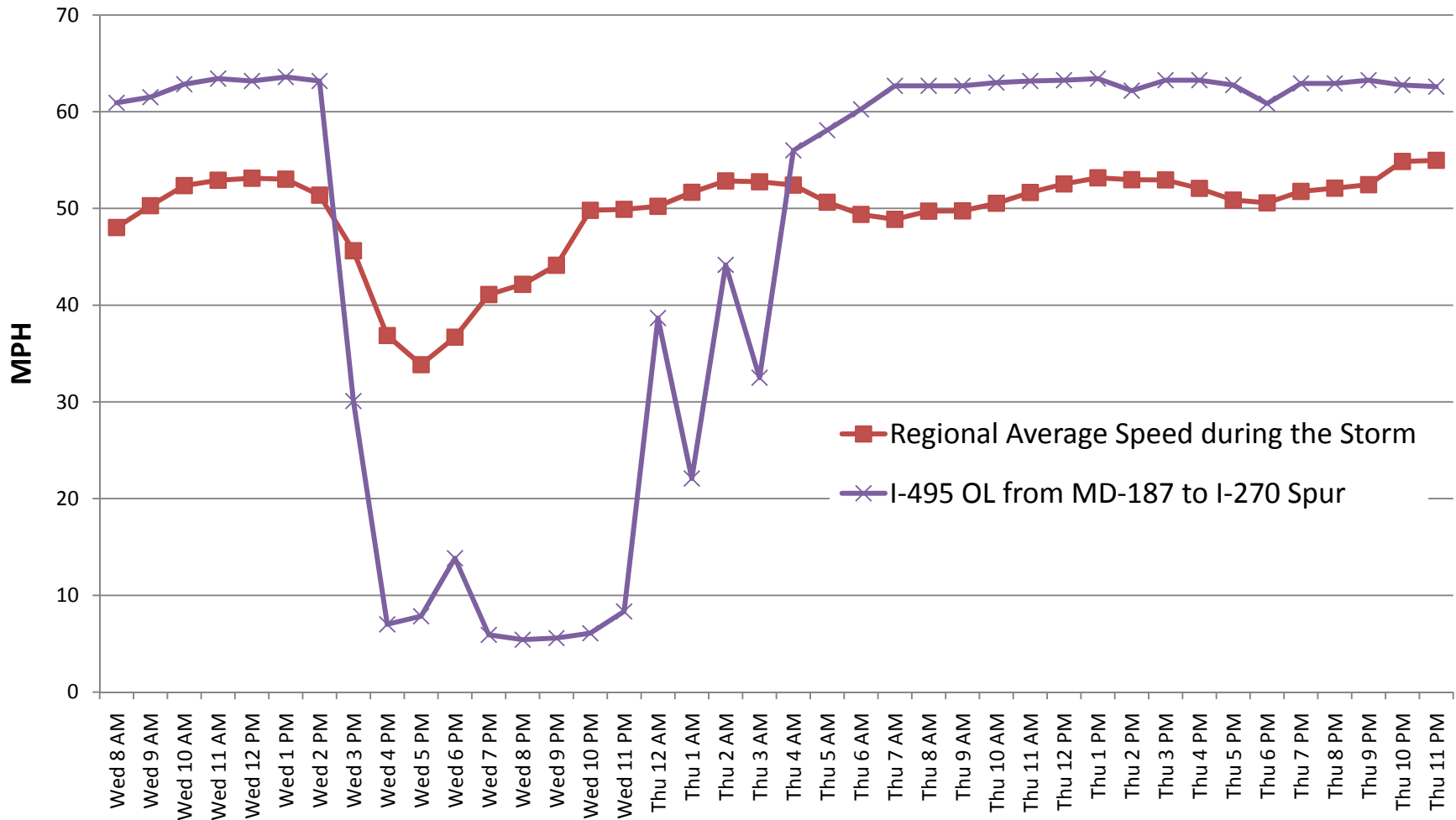
Total Travel Delay Increased by Almost 4 Times (From 1:00 PM Jan. 26 Wednesday to 8:00 AM Jan. 27 Thursday)



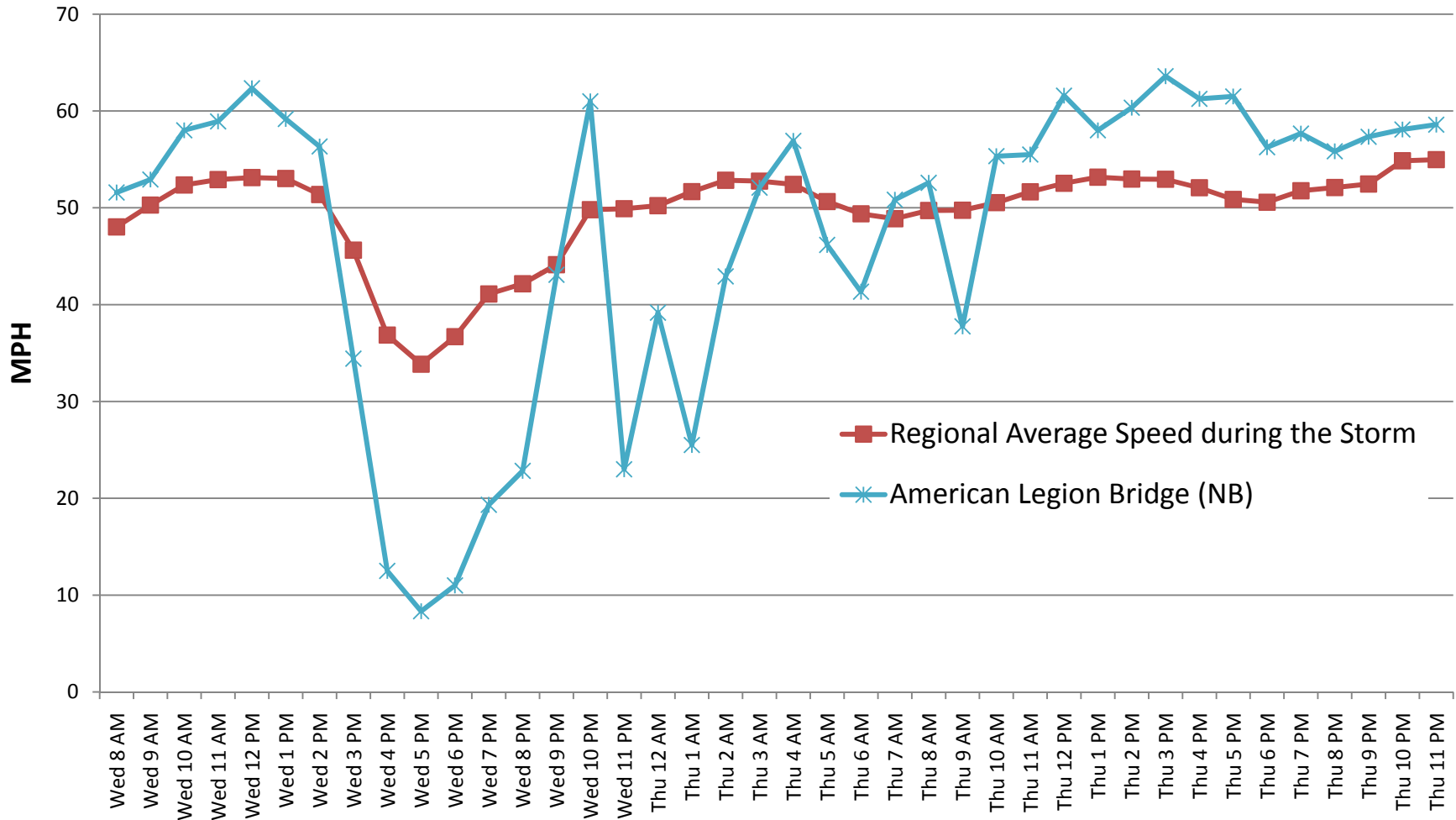
Regional Comparison of Jan. 26-27 Speeds to Average Conditions



Comparison of Individual Segment Speeds to Regional Average during the Jan. 26-27 Winter Storm (1/3)



Comparison of Individual Segment Speeds to Regional Average during the Jan. 26-27 Winter Storm (2/3)



Comparison of Individual Segment Speeds to Regional Average during the Jan. 26-27 Winter Storm (3/3)

