

# Regional Planning and Coordination

Christopher Voss  
Director

Montgomery County Office of  
Emergency Management and Homeland  
Security

A stylized, layered mountain range graphic in shades of teal and blue, positioned at the bottom right of the slide.

# State and Regional Coordination

---

- ◆ NCR Emergency Manager's Committee
- ◆ NCR Planning Committee
- ◆ NCR Exercise, Training, Operations Panel (ETOP)
- ◆ NCR Senior Policy Group (SPG)
- ◆ NCR Homeland Security Executive Committee (HSEC)
- ◆ Governor's Emergency Management Advisory Committee (GEMAC)



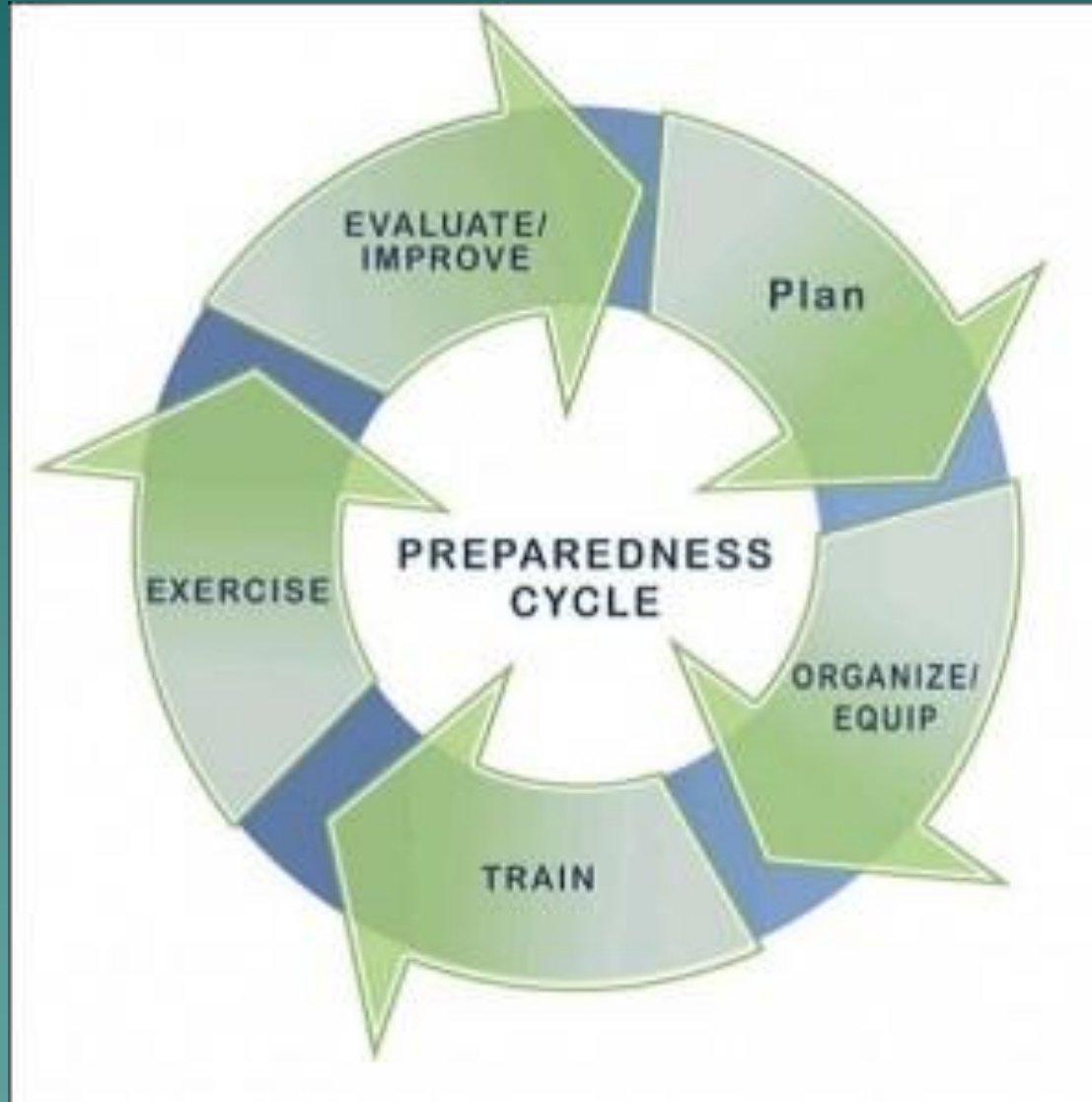


# Hazards





# Regional Program



# Planning

## COORDINATED EMERGENCY TRANSPORTATION OPERATIONS PLAN FOR THE MARYLAND NATIONAL CAPITAL REGION

FINAL DRAFT REPORT

VOLUME I: BASE PLAN & APPENDIX A

June 30<sup>th</sup>, 2010



National Capital



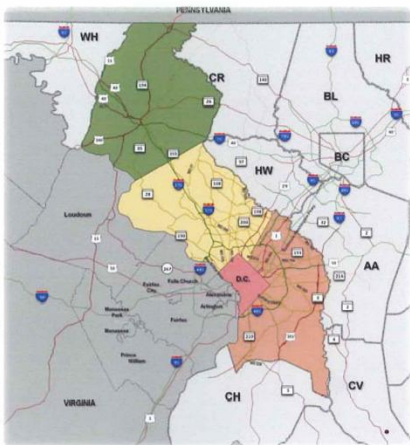
Fort Detrick



Indian Head NSWC



NIH/NSA Bethesda  
Pedestrian Support



Baltimore



Three Mile Island NGS



Calvert Cliffs NPP

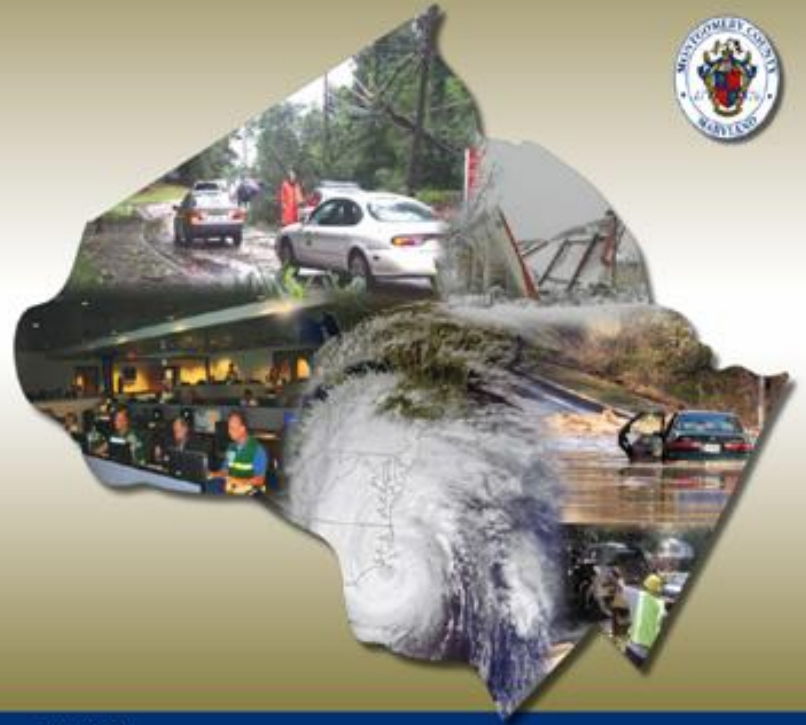


Transit Support  
Washington, D.C.

Prepared by **SHA** In Collaboration with



## Montgomery County EMERGENCY OPERATIONS PLAN



JUNE 2009

# Training and Exercises

---

## **Background:**

- ◆ On Wednesday December 19, 2012, Montgomery County will be hosting an EOC functional exercise designed for the Emergency Management Group (EMG). The training, being held at 1300 Quince Orchard Blvd., Gaithersburg from 8:30am to 3:00pm, will focus on the County's response and recovery from a severe winter storm.

## **Who Should Attend:**

- ◆ Members of Emergency Management Group (EMG)

## **What You Will Learn:**

- ◆ This training is being designed to provide EMG members and their leadership and opportunity to implement and execute planning, response, and recovery operations associated with a major thunderstorm adversely affecting our county:
- ◆ Address preparedness efforts such as continuity planning, storm tracking, legal support
- ◆ Provide emergency planning as well as response and recovery actions such as debris removal, power restoration and damage assessments
- ◆ Your designated EMG member representative's participation is important and we look forward to your organizations valuable contributions to the success of the EOC exercise.

## **When is the Event:**

- ◆ The event will take place on Wednesday December 19, 2012. The event will begin at 8:30am and will conclude at 3:00pm.

# Equipment / Resources

---

- ◆ Webeoc
- ◆ Alert Systems
- ◆ Mass Care Equipment
- ◆ Outer gear for responders
- ◆ Communication Equipment
- ◆ Expanding Hospital Surge Capacity
- ◆ License Plate Readers
- ◆ Information Sharing
- ◆ Situational Awareness

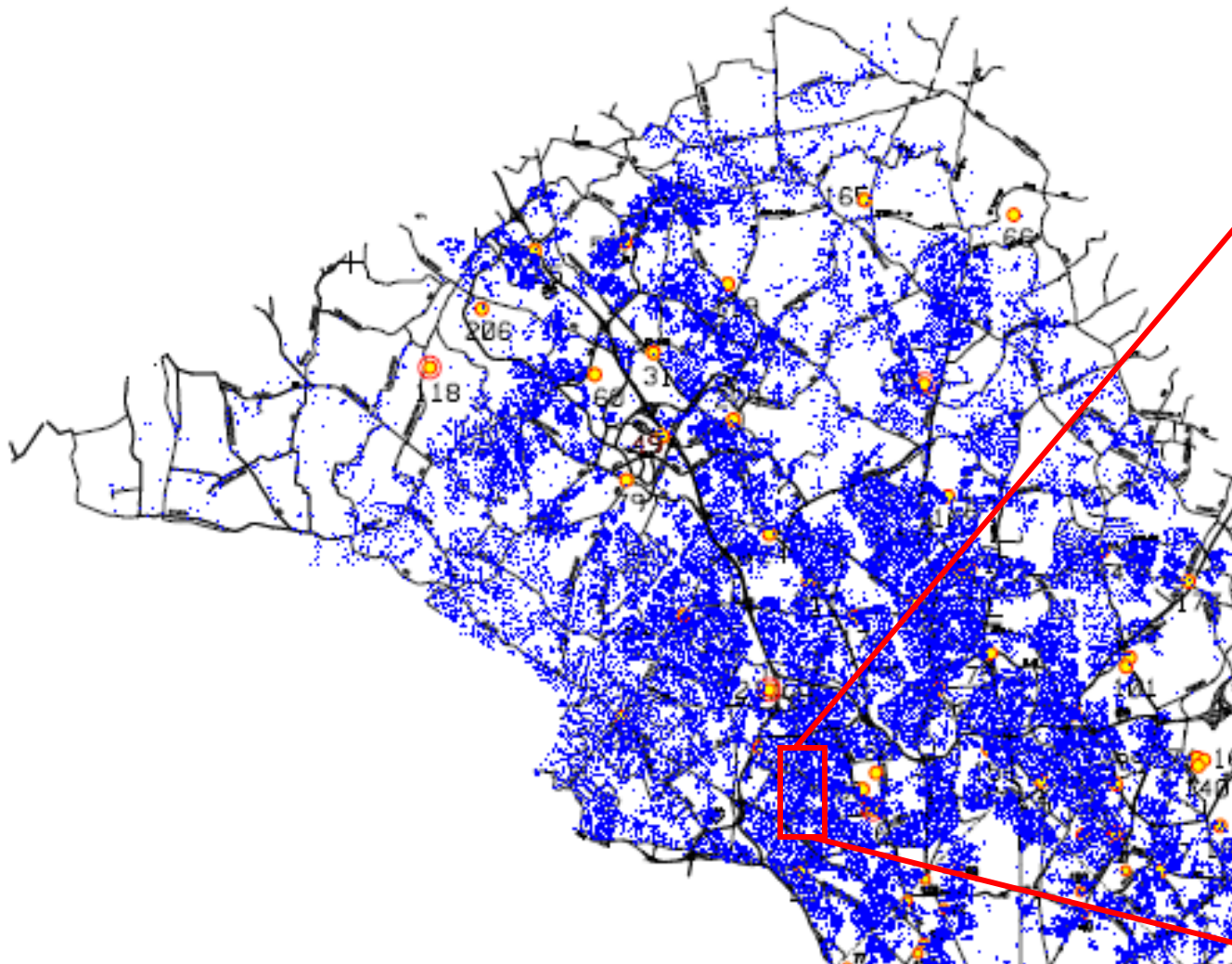
# Notice and No-Notice Events

---

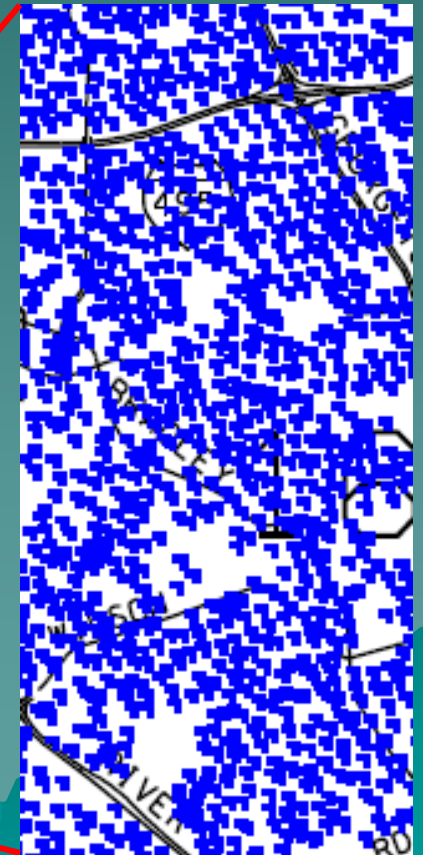
- ◆ Increase Staffing
- ◆ Mutual-Aid
- ◆ Prepare and Test Equipment
- ◆ Improved Situational Awareness
- ◆ Stage or Pre-deploy Equipment
- ◆ Operational and financial decisions may differ



# Pepco Transformers Without Service (2pm June 30, 2012)



10 Times  
Magnification



# Power Restoration Priorities

---

- 1) Hospitals (5 Facilities) Holy Cross, Montgomery General, Shady Grove, Suburban, Washington Adventist
- 2) 911 Center/EOC and backup 911 Center/Backup EOC (2 Facilities)
- 3) Water Treatment Plants (2 Facilities)
- 4) County Nursing Homes (34 Facilities)
- 5) Large Assisted Living Facilities (27 Facilities)
- 6) 2 Correctional facilities (Montgomery County Detention Center and Boyds Correctional Facility)

# I Hope I Didn't Ruin Lunch

Questions?

A stylized silhouette of a mountain range in a darker shade of teal, located in the bottom right corner of the slide.