



# Food Supply Chain Resilience Data

Riley Piva

DC Homeland Security and Emergency Management  
Agency

# STAGES OF THE FOOD SUPPLY CHAIN

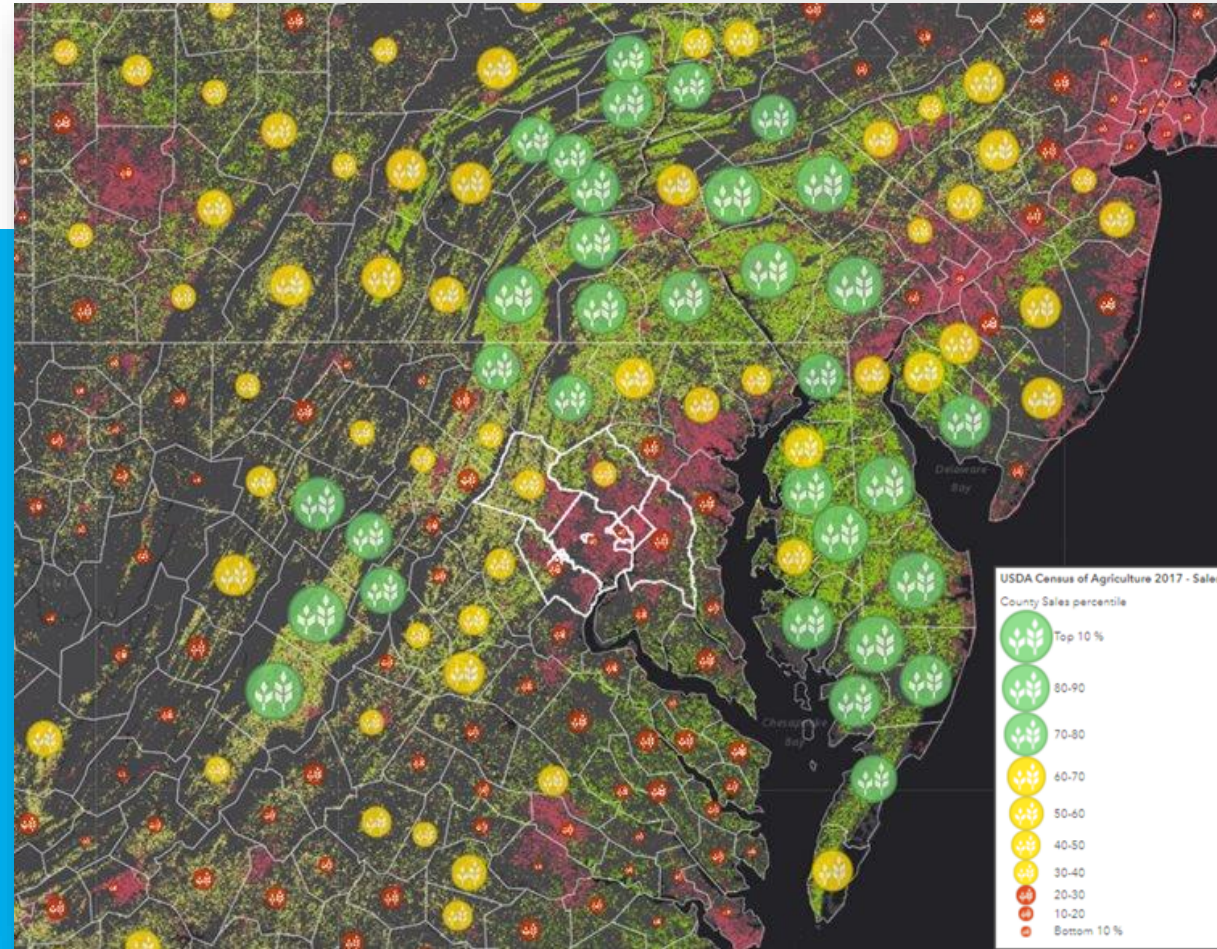


1. SOURCE      2. PROCESSING      3. DISTRIBUTION AND WHOLESALE      4. RETAIL      5. END USER



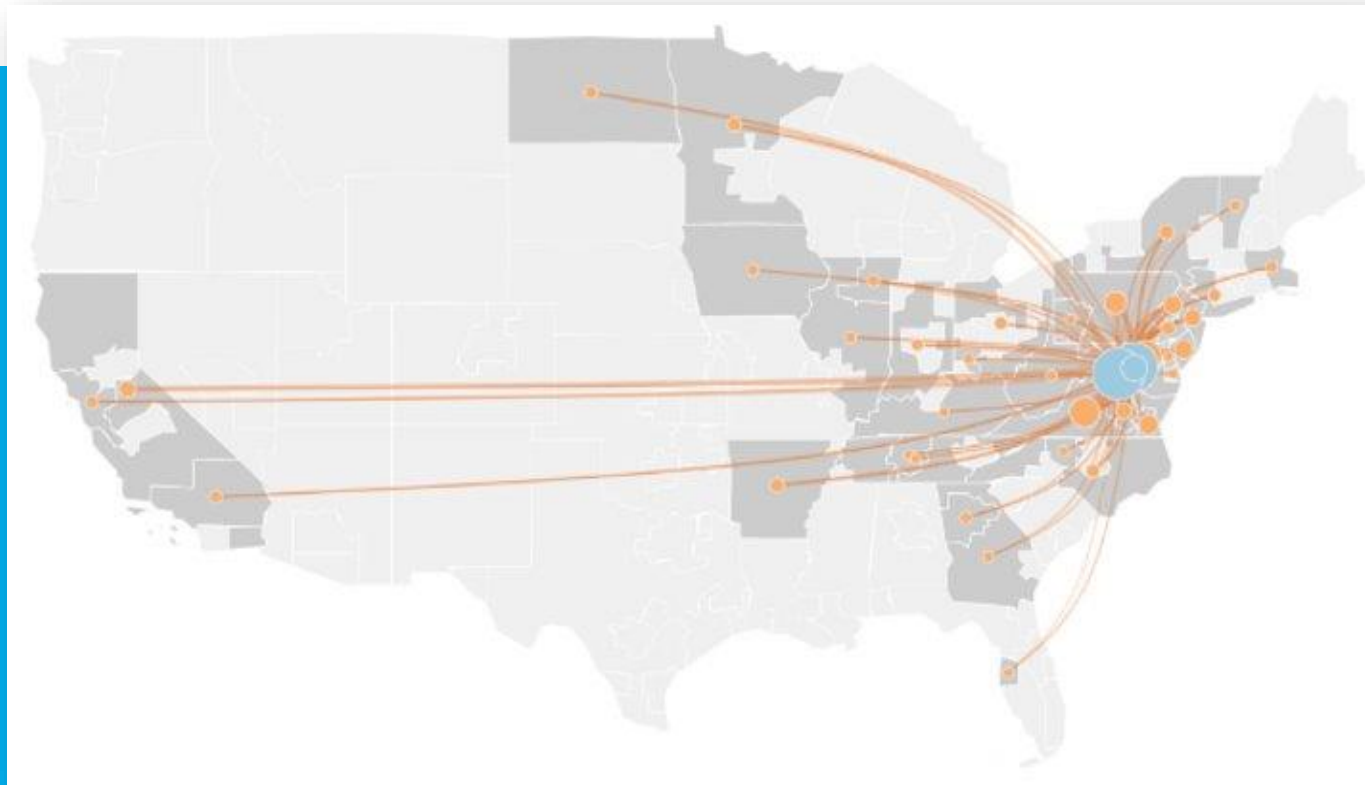
**UPSTREAM**      **MIDSTREAM**      **DOWNSTREAM**

# Supply Chain: *Upstream*

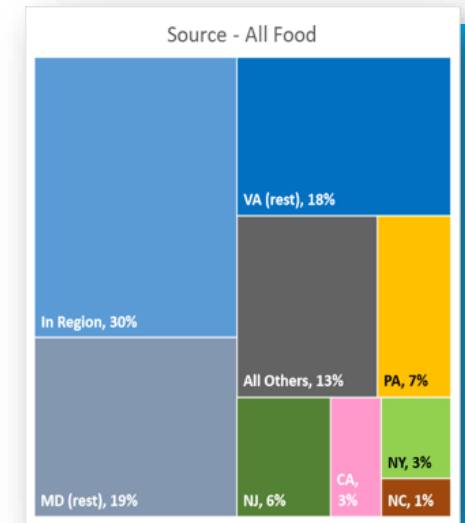


Agriculture

# Supply Chain: *Upstream*

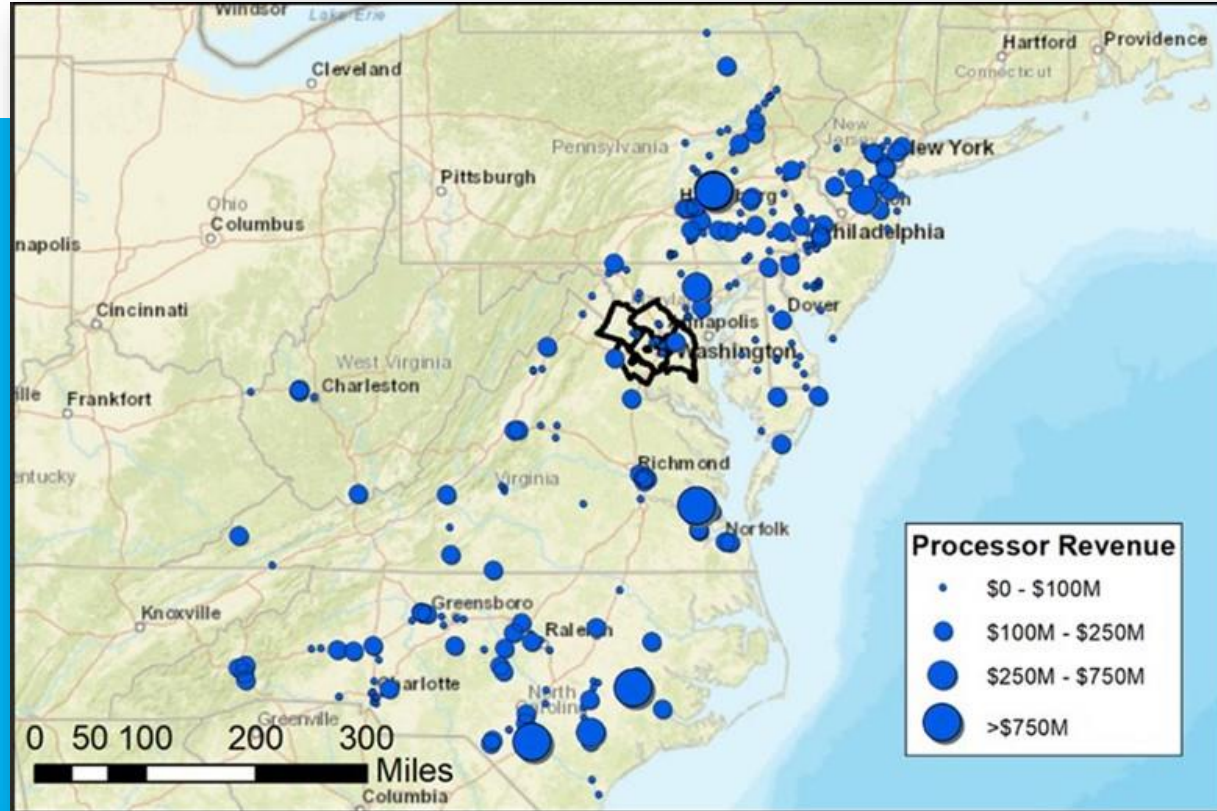


Sourcing



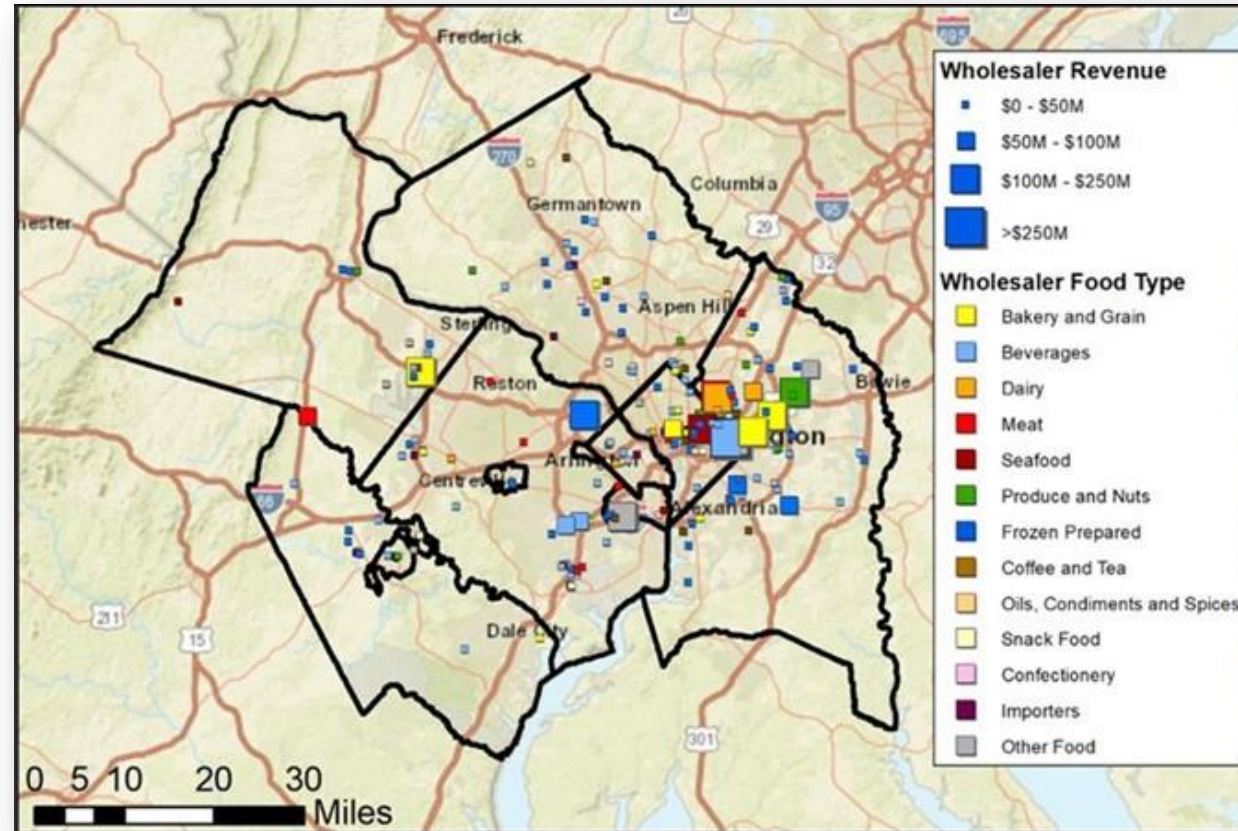


# Supply Chain: *Upstream*



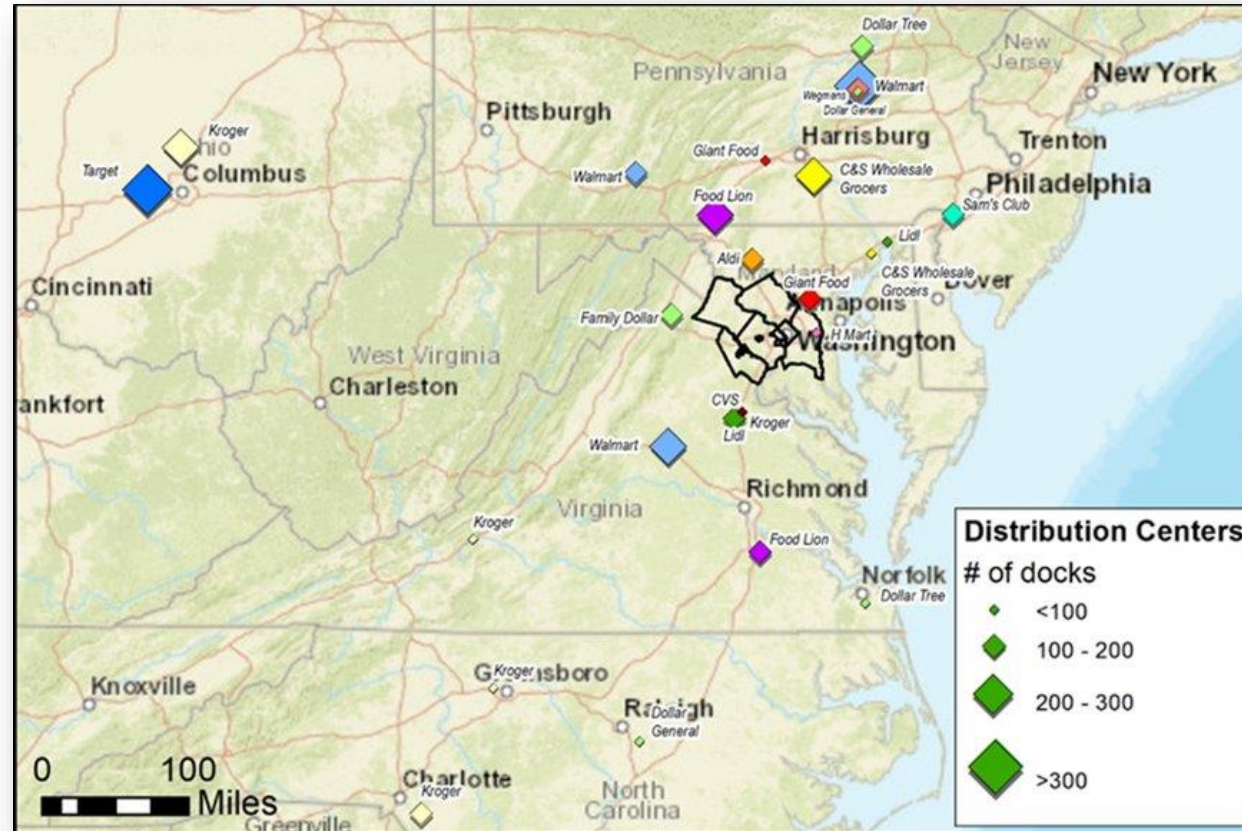
Processing

# Supply Chain: *Midstream*



Wholesalers

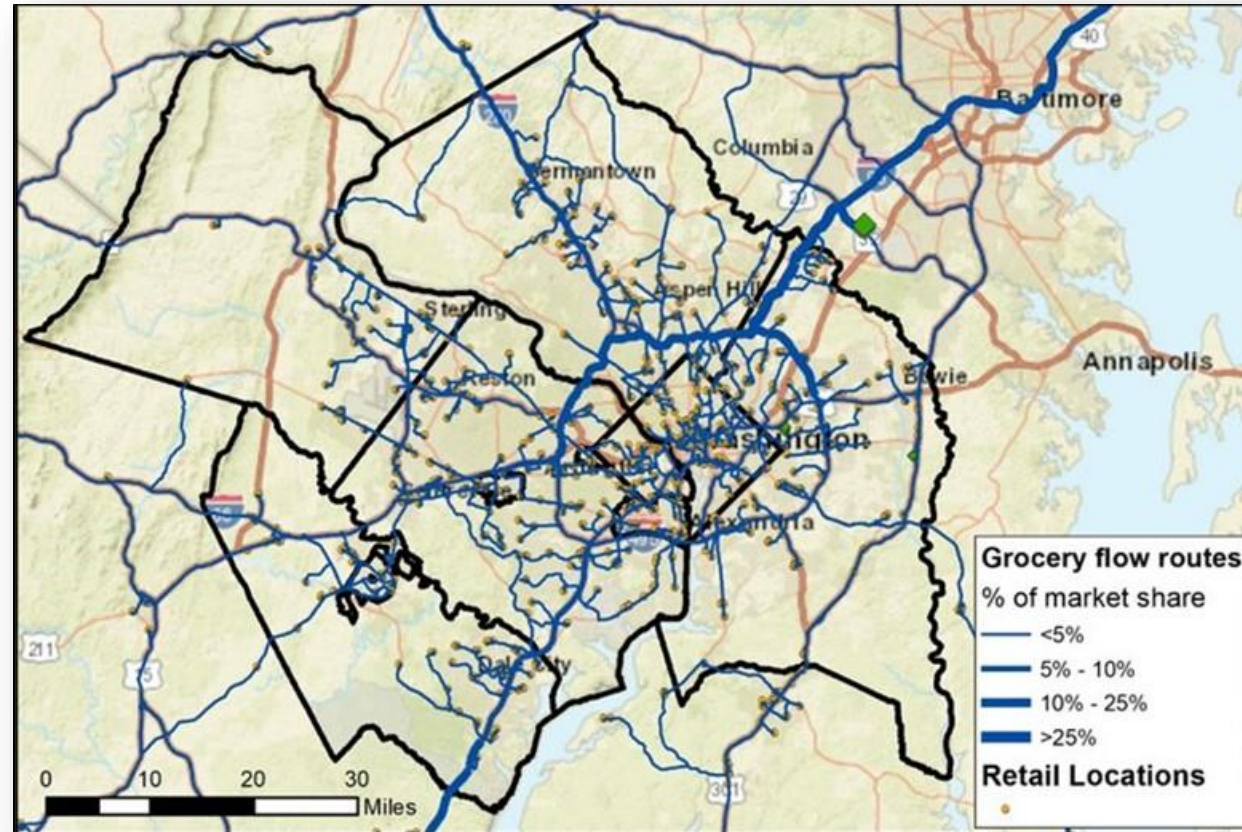
# Supply Chain: *Midstream*



Distribution Centers



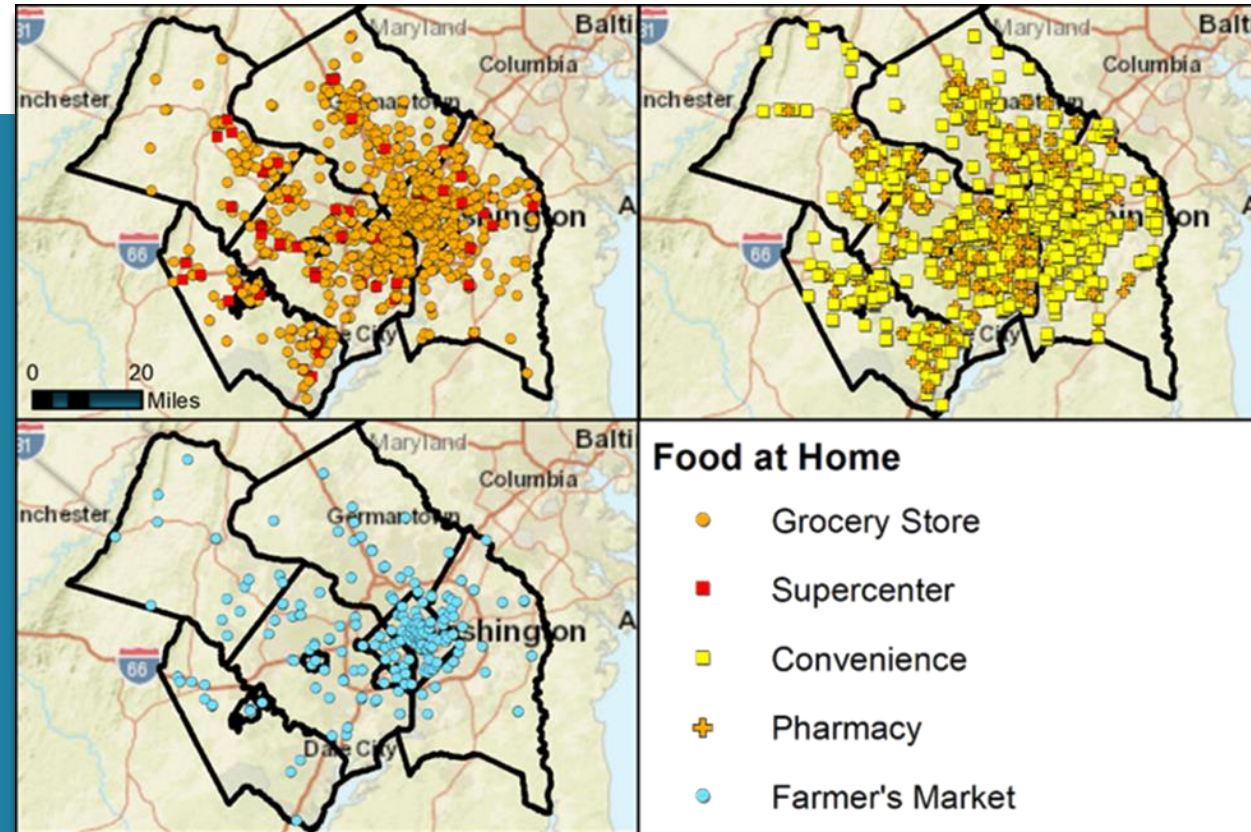
# Supply Chain: *Midstream*



Flow Routing

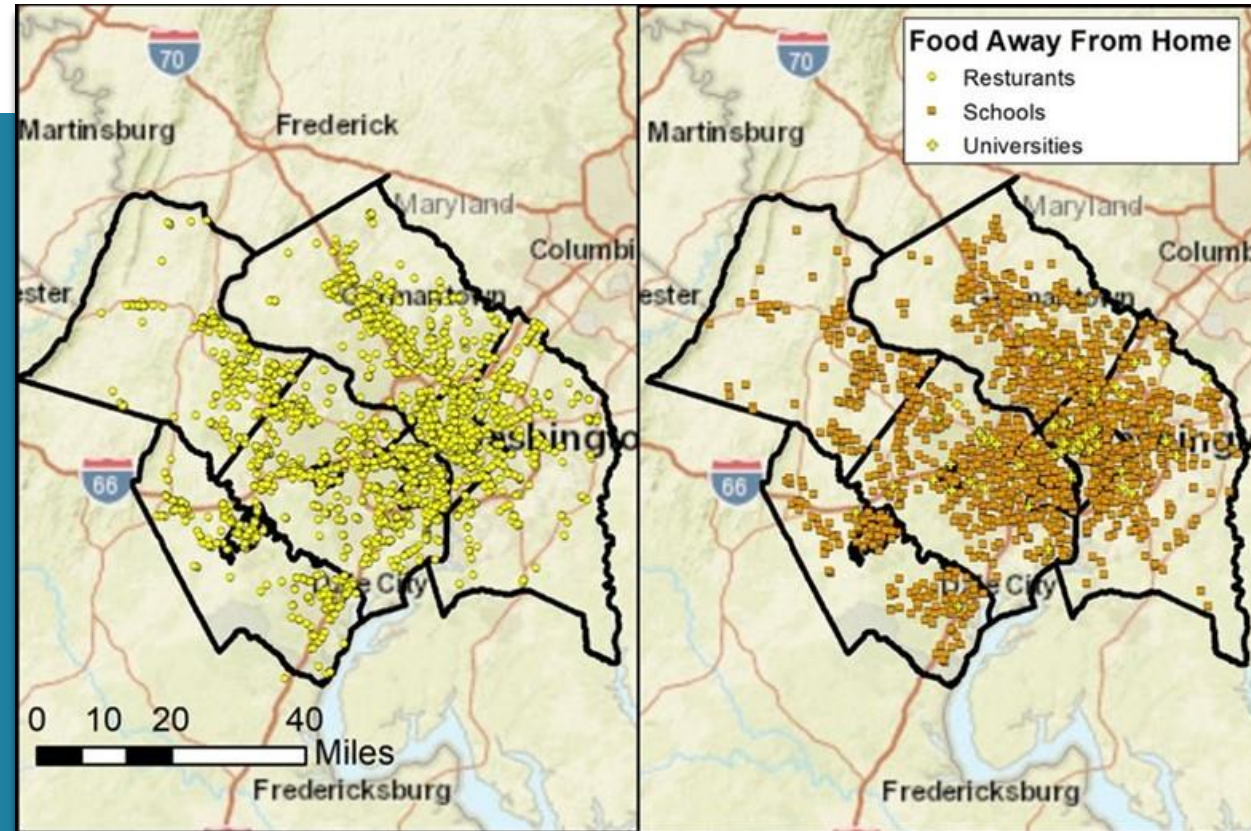


# Supply Chain: *Downstream*



Retail Locations (Food at Home)

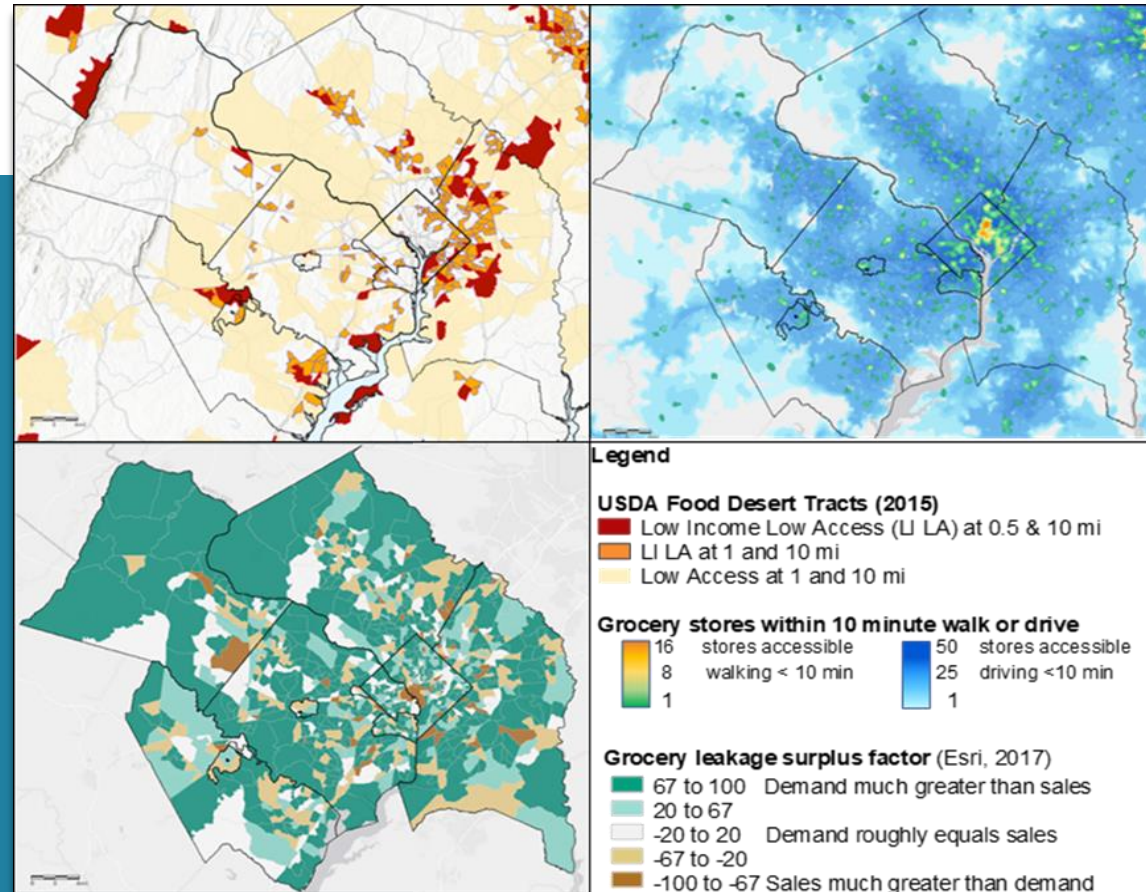
# Supply Chain: *Downstream*



Retail Locations (Food Away from Home)



# Supply Chain: *Downstream*



Food Access



# Local Supply Chain Analysis Guide

---

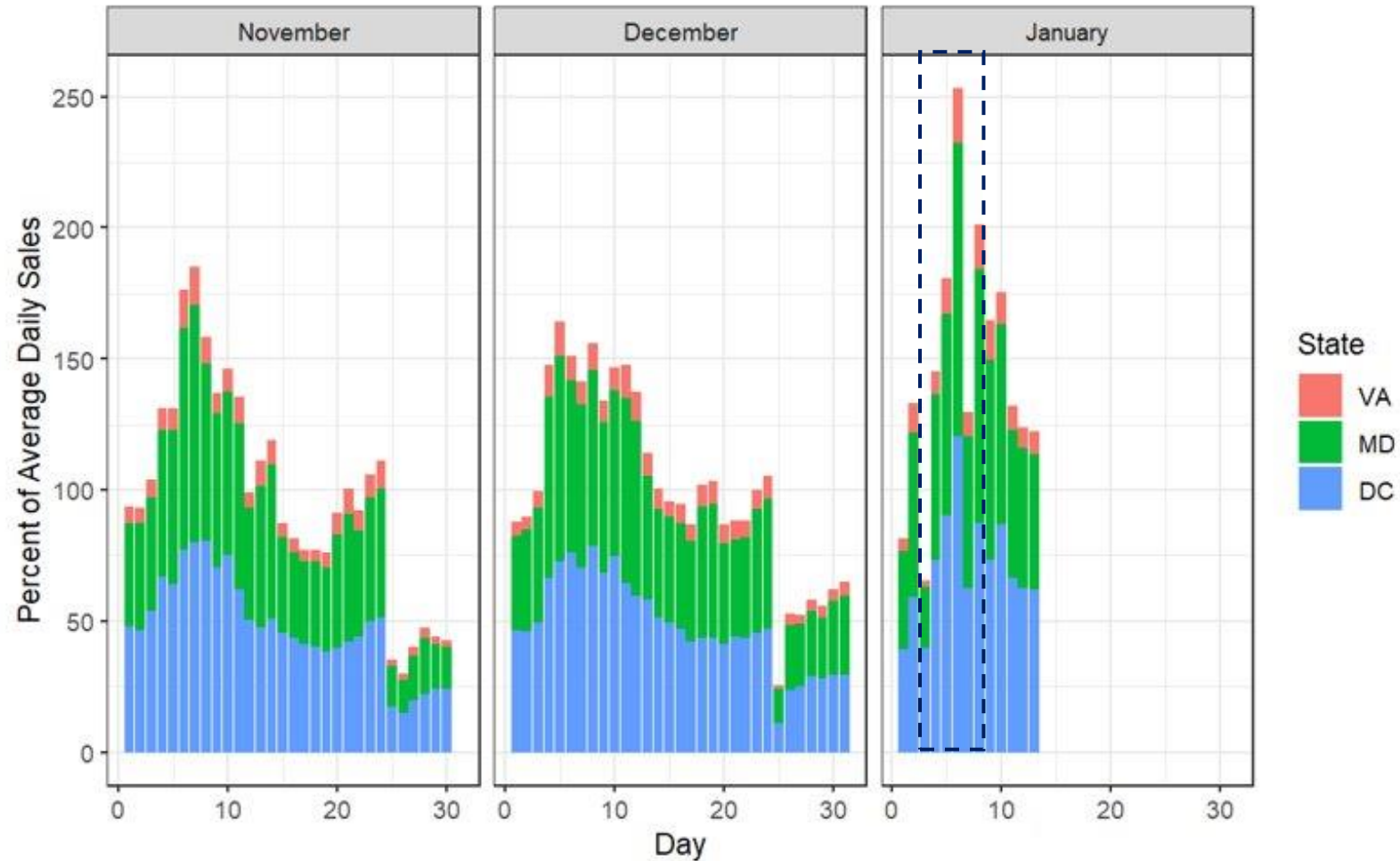
**Purpose:** Provide partners with guidance on how to accomplish this analysis.



# SNAP Near Real-Time Data Monitoring

## Problem

How can emergency managers gather actionable, granular information on the status of the food supply chain, and residents' access to food?



# SNAP Data Monitoring Goals

---

**1: Monitor status of overall recovery**

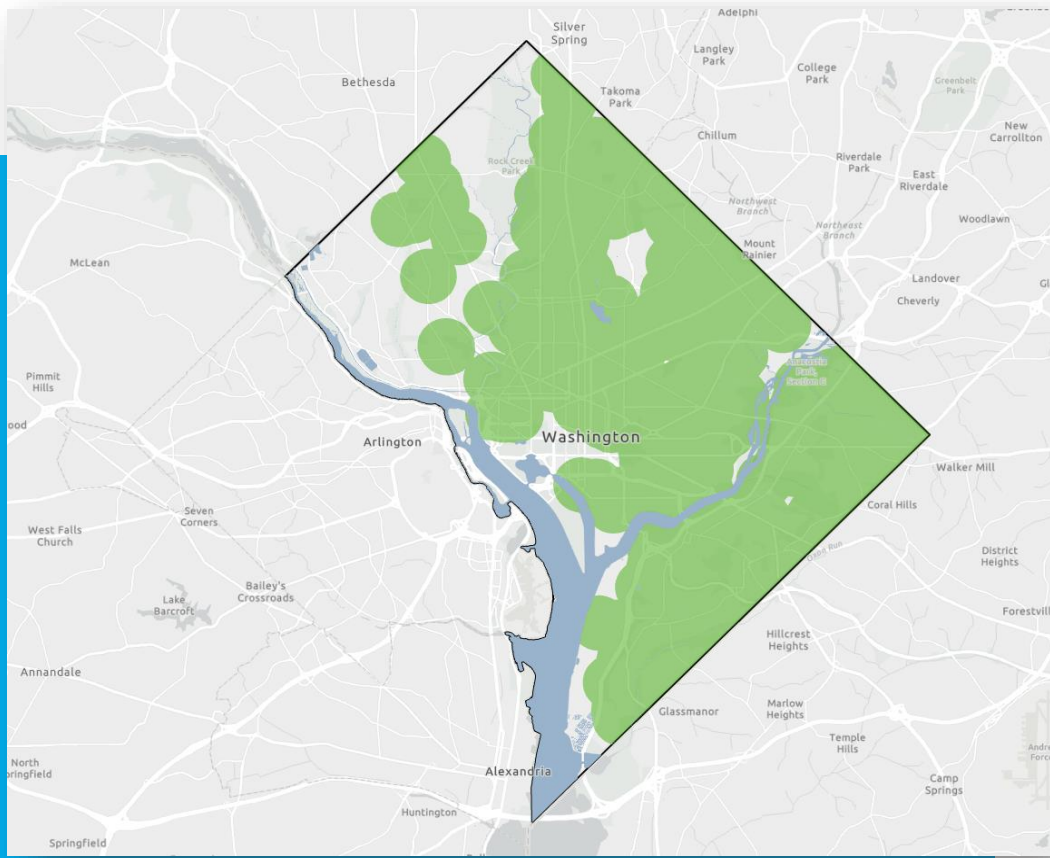
**2: Identify major systemic issues**

**3: Identify specific locations with disruptions**

**4: Flag disruptions to high-volume stores**



# NCR GDX Data Collection



Geospatial Analysis of Emergency Food Access DRAFT

4:32 PM Riley

### Emergency Food Provider Data Coll...

Please fill out the following survey with your organization's information to support the collection of data on emergency food assistance providers in the District. Thank you!

**Organization Type\***

**Organization Type\***

Nonprofit

Faith-based/religious institution

Town or city

School/library/community center

Grocery store

Other

Organization Name\*



# Riley Piva

[riley.piva@dc.gov](mailto:riley.piva@dc.gov)

---