

Council of Government's Chesapeake Bay and Water Resources Policy Committee

Carla Reid
WSSC GM/CEO
May 18, 2018

How I Got Here

1986



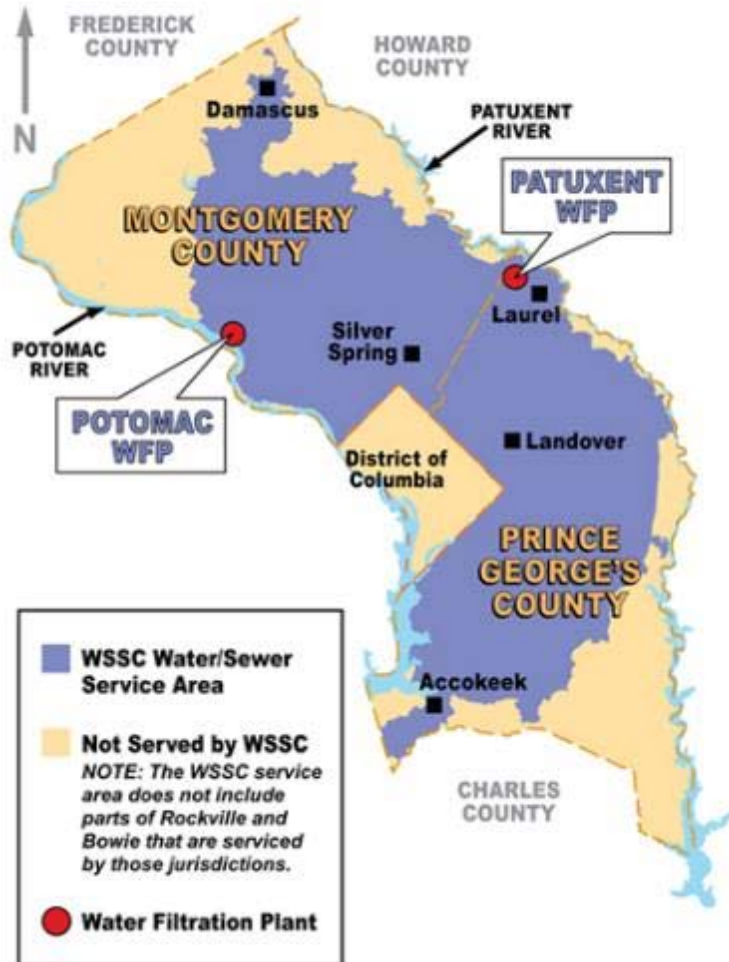
2016



1918



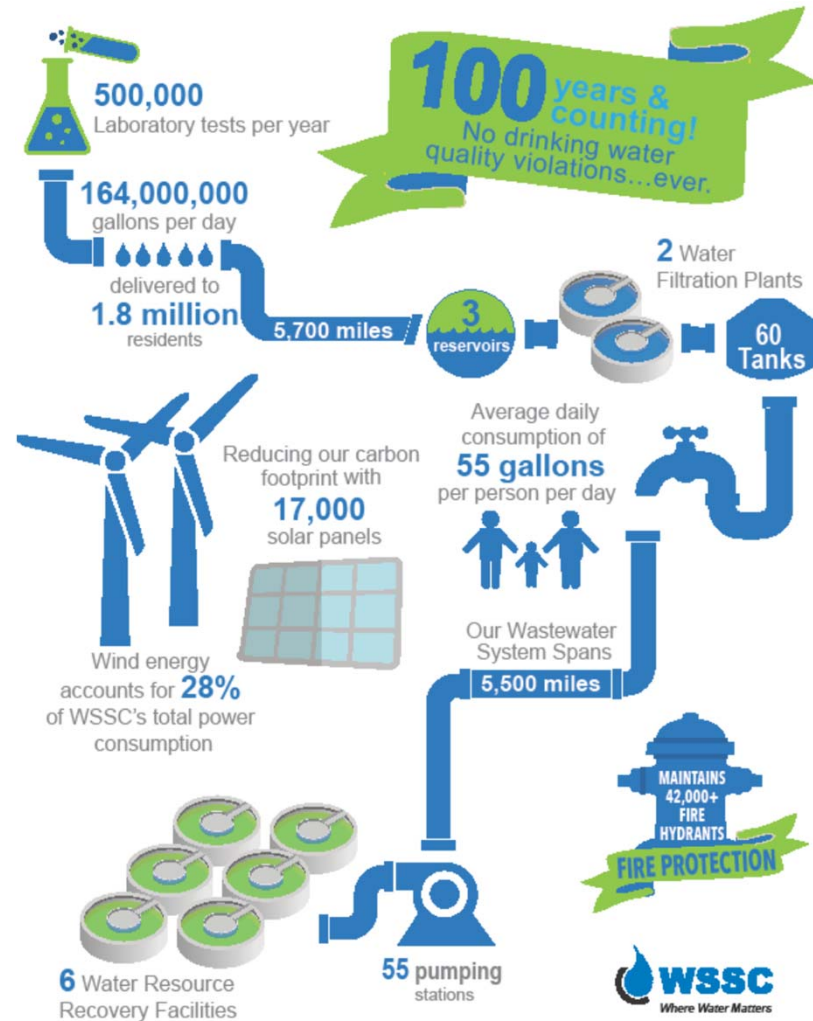
WSSC Service Area



- ▶ Spans nearly 1,000 square miles
- ▶ Serve 1.8 million residents
- ▶ 450K+ customer accounts

WSSC At A Glance

- 2 Water Filtration Plants
- 6 Water Resource Recovery Facilities
- 3 Water Storage Dam/Reservoirs
- 60 Water Storage Tanks
- 55 Wastewater Pumping Stations (WWPS)
- 42,000+ Fire Hydrants
- 17,000 Solar Panels
- 0 Water Quality Violations



History & Governance Structure

- ▶ Commissioned by State of Maryland in 1918
- ▶ Bi-county agency
 - Montgomery and Prince George's counties
- ▶ Governed by six Commissioners
 - Three from Montgomery and three from Prince George's
 - Appointed by their respective County Executive
 - Approved by respective County Council
 - Serve four-year terms
- ▶ General Manager/CEO hired by Commissioners
- ▶ County Councils approve WSSC budget

WSSC STRATEGIC PLAN

MISSION

We are entrusted by our community to provide safe and reliable water, life's most precious resource, and return clean water to our environment, all in an ethical, sustainable, and financially responsible manner.

VISION

To be THE world-class water utility, where excellent products and services are always on tap.

STRATEGIC PRIORITIES



CORE VALUES

Accountability

Transparency

Excellence

Environmental Stewardship

Cost Effectiveness

GUIDING PRINCIPLES

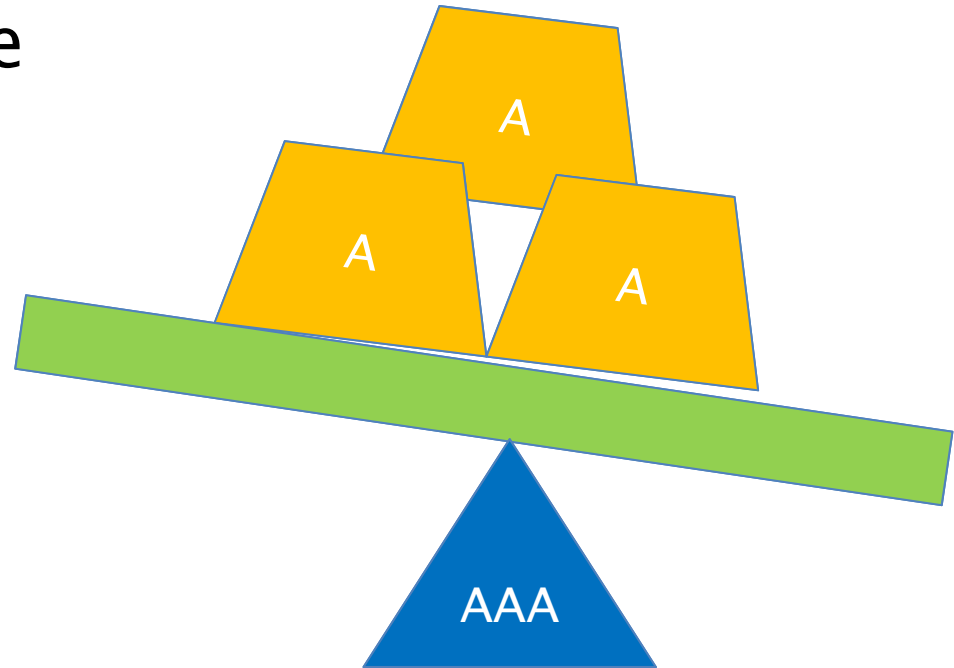
Simplify

Focus

Connect

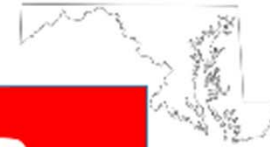
Triple A Challenge

- ▶ Aging Infrastructure
- ▶ Affordability
- ▶ Aging Workforce

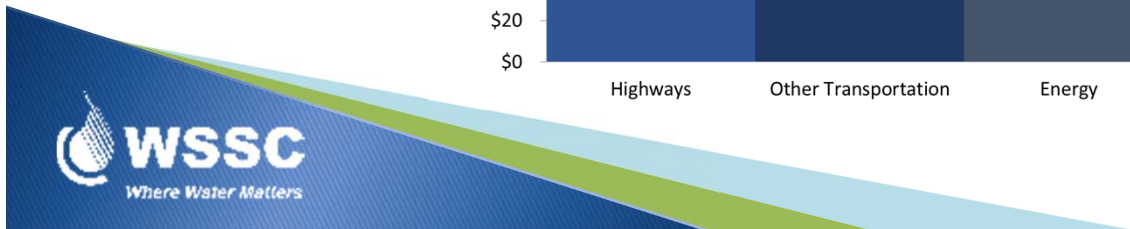
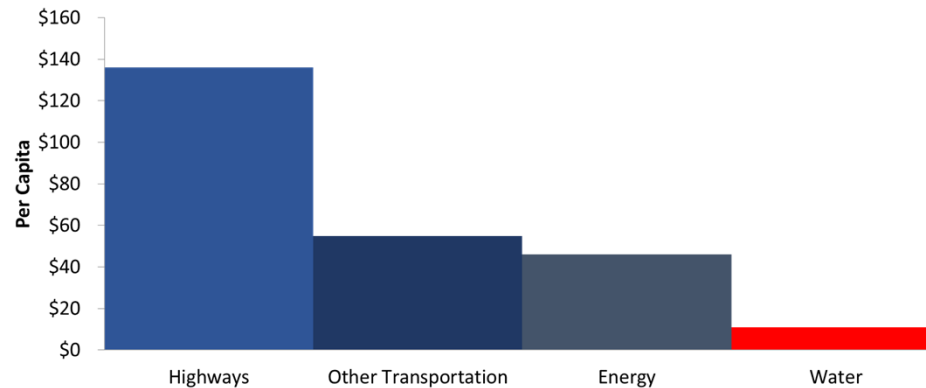


Impact on AAA Bond Rating

National Perspective



American Society of Civil Engineers – 2017 Infrastructure Report Card



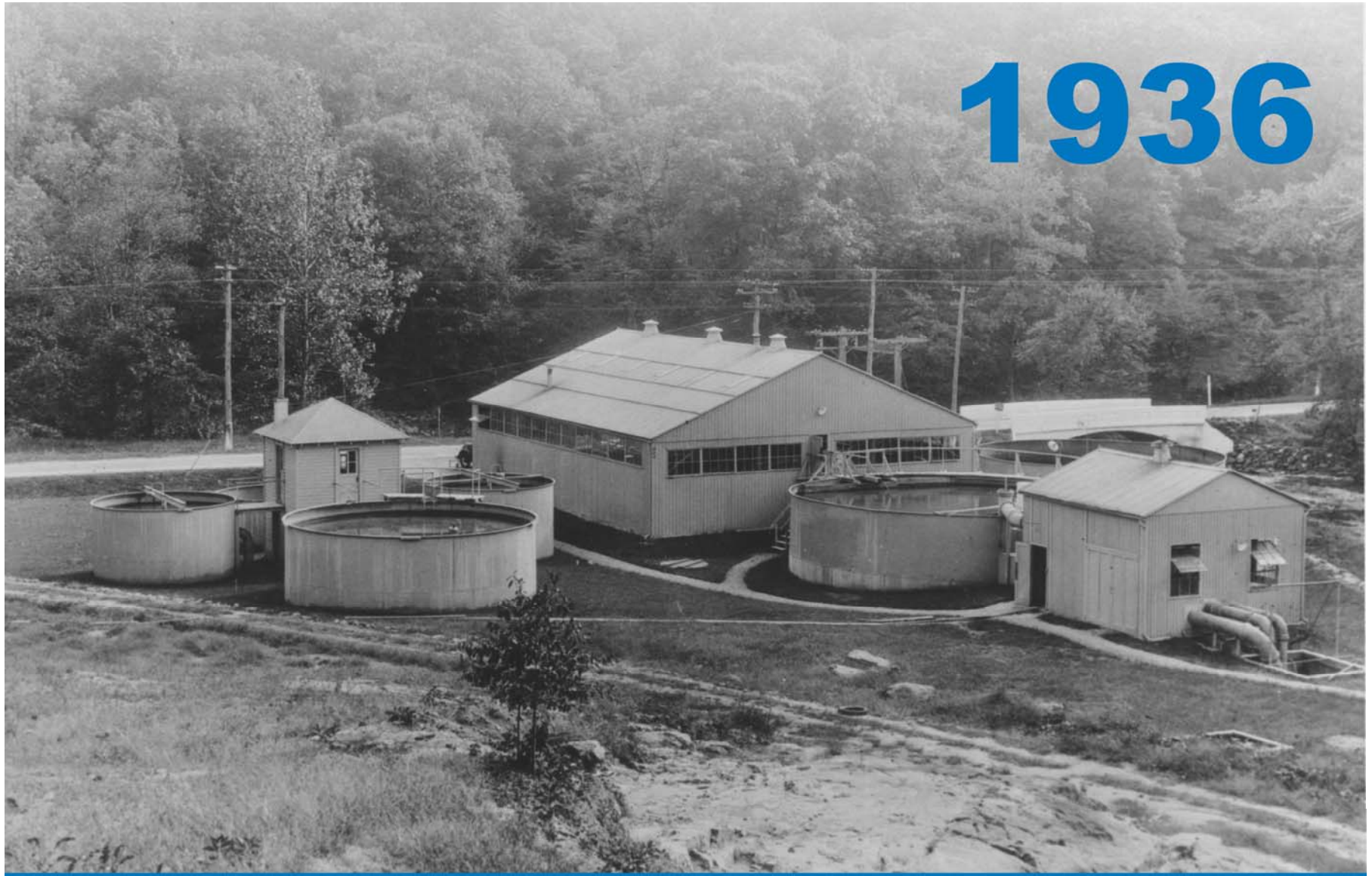
WSSC Water Symposium



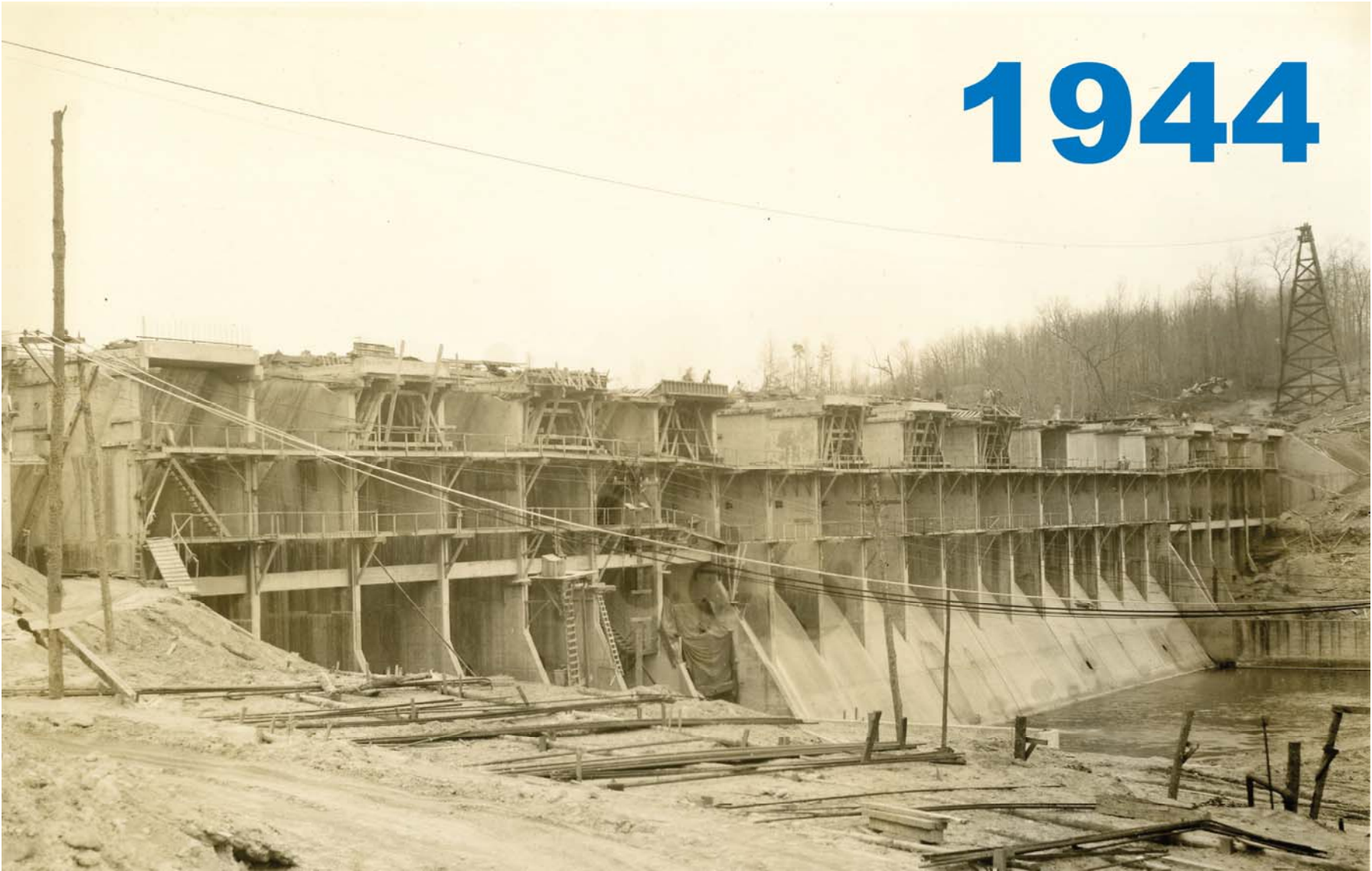
A Century of Innovation



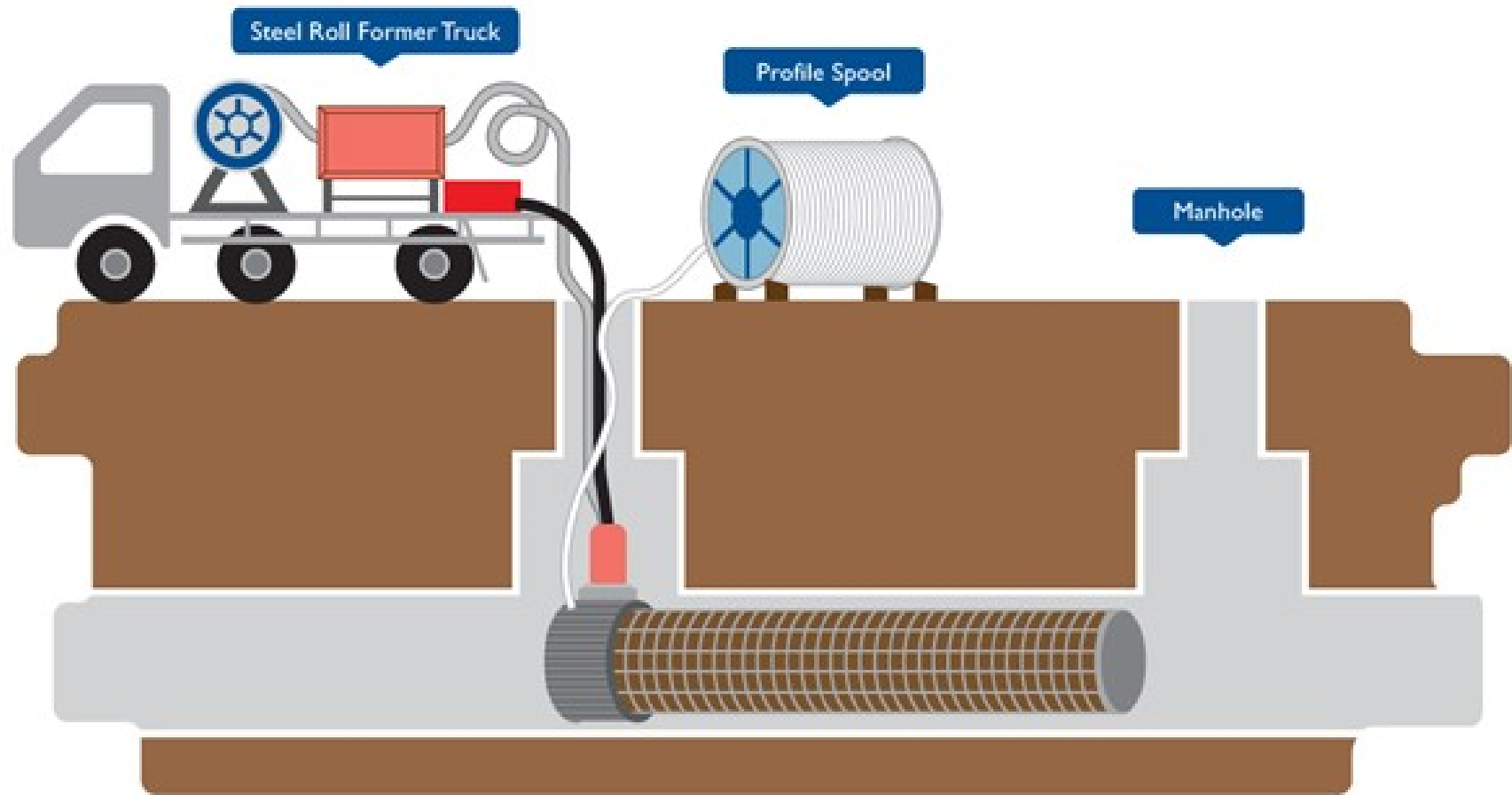
1936



1944



Spiral Wound Lining Method



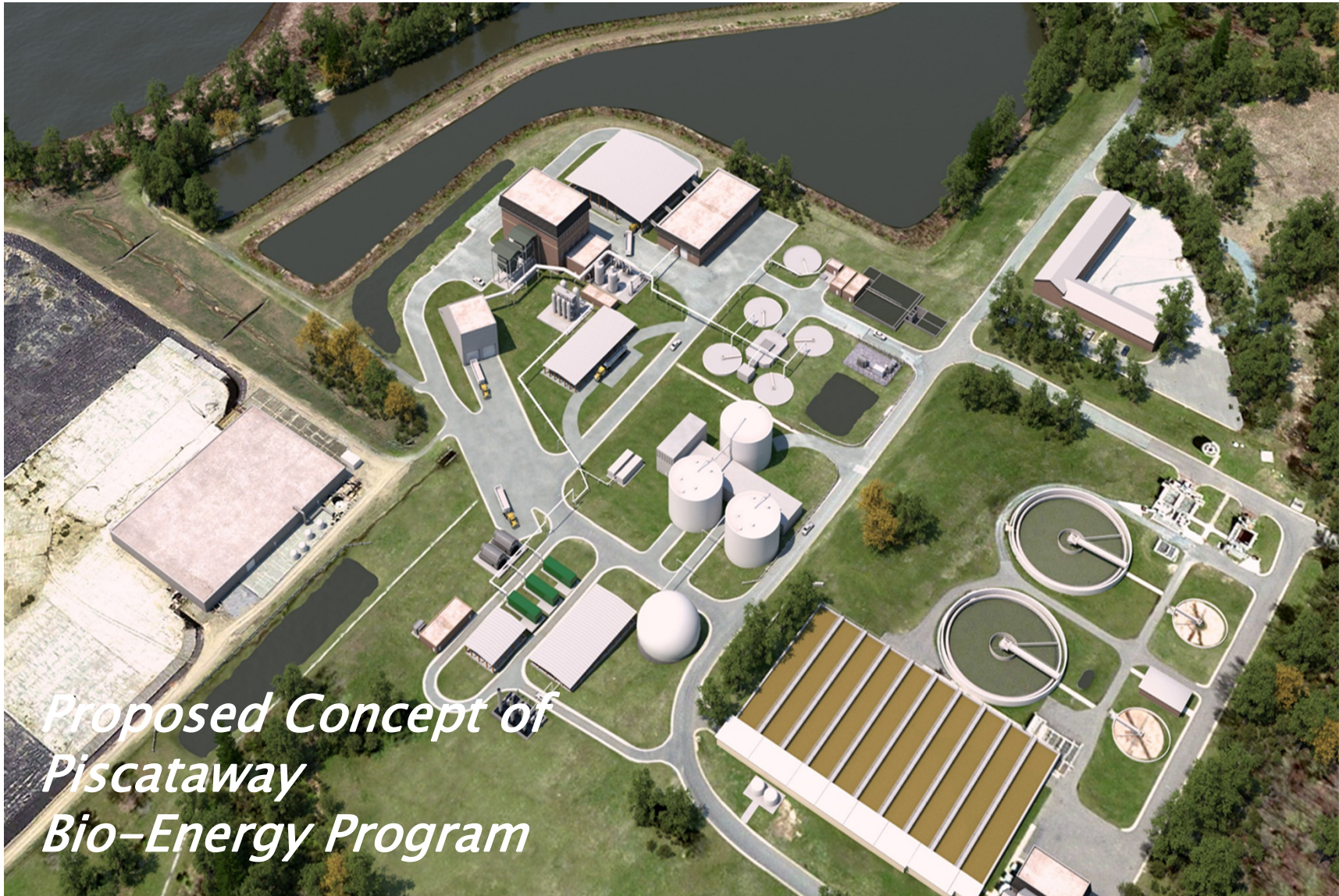




2016







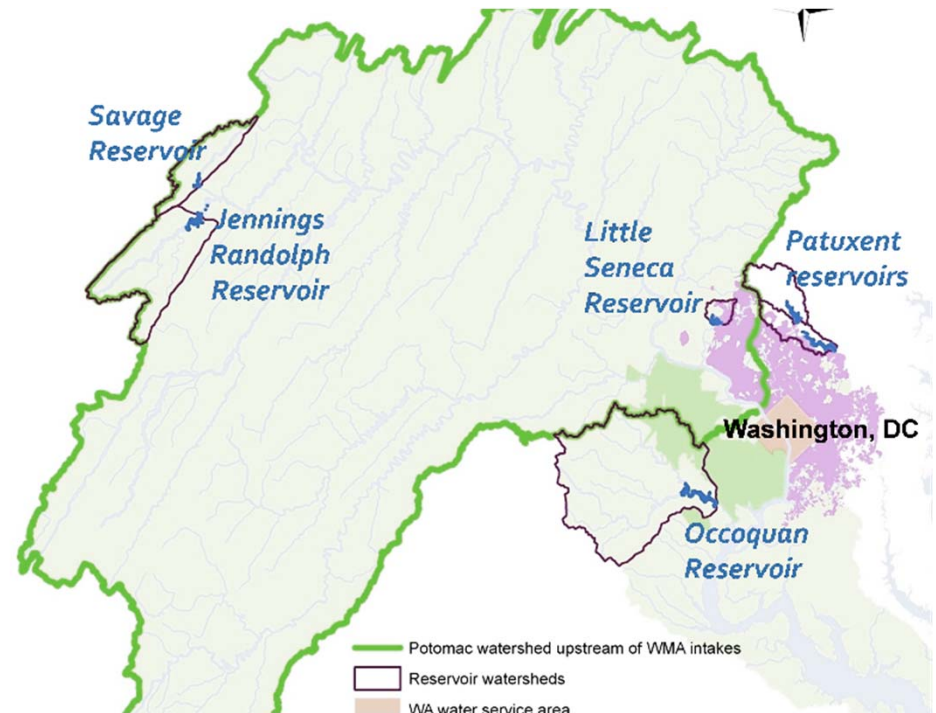
*Proposed Concept of
Piscataway
Bio-Energy Program*

Project Benefits

- ▶ Reduces volume of biosolids for disposal
- ▶ Mitigates risks with future product use and regulations
- ▶ Very low odor and highly-stable product
- ▶ Eliminates use of lime
- ▶ Generates 2.7 MW of efficient natural gas power with steam recovery
- ▶ Reduces WSSC greenhouse gas emissions by 15%

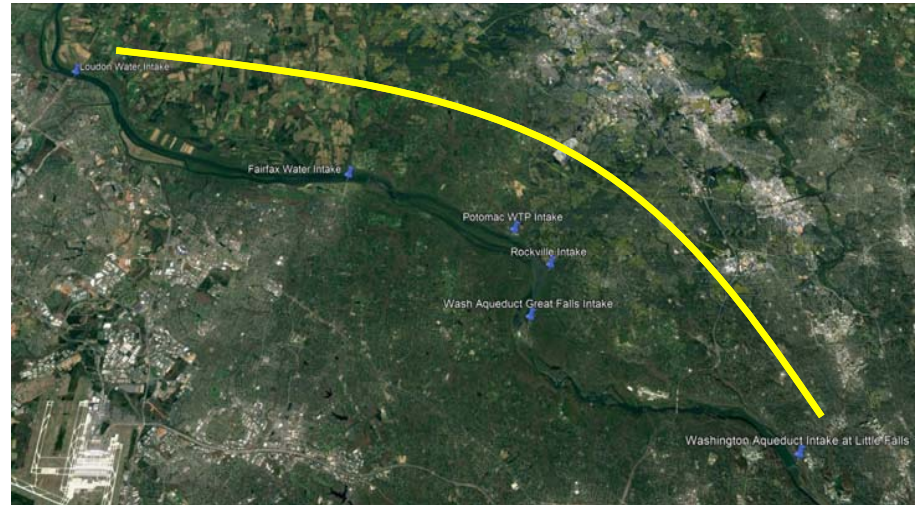
Innovation & Collaboration

- ▶ Water supply planning for the metro area
 - 1978 Low Flow Allocation Agreement
 - 1982 Water Supply Coordination Agreement
 - Various Agreements concerning shared assets:
 - Jennings Randolph Reservoir
 - Savage Reservoir
 - Little Seneca Reservoir



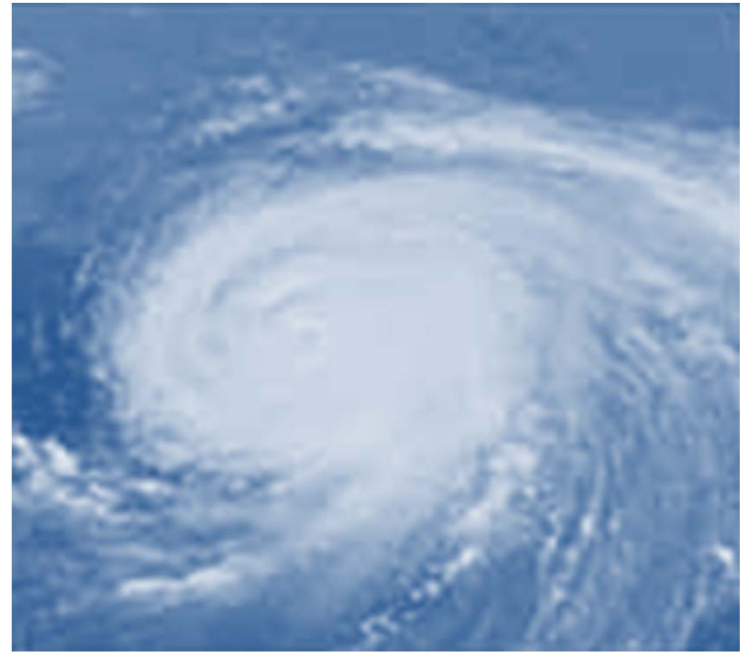
Innovation & Collaboration

- ▶ Water Supply Coordination Agreement
 - Executed July 1982
 - WSSC, Fairfax Water, USACE, D.C., and ICPRB
 - Minimize the likelihood that the provisions of the Low-Flow Allocation Agreement would be invoked
 - Established an Operations Committee:
 - Oversees implementation of agreements and responds to operational planning needs



Innovation & Collaboration

- ▶ MD and National Capitol Region WARN
- ▶ Water & Wastewater Agencies Response Network
- ▶ Network of utilities helping utilities
- ▶ United by common “enemies”
 - Natural disasters
 - Human-caused disasters
- ▶ Utilities organized within a state or region
 - By agreement
 - To help each other with personnel and resources



Looking to the Future

- ▶ Two reports on regional water supply:
 - NCR Water Supply and Distribution System Redundancy Study (COG, 2016): evaluation of the water supply to withstand emergencies.
 - Water Supply Alternatives Study (ICPRB, 2017): evaluation of alternatives to ensure water sources to meet future demands under drought and climate change scenarios
- ▶ Both recommend pursuit of quarries to improve water supply



Travilah Quarry

- ▶ Intersection of resiliency and reliability
- ▶ Considered as possible water storage facility by WSSC since at least 2001
- ▶ WSSC is taking an active role within the region to further the development of Travilah into a regional water storage facility:
 - Travilah Quarry Reservoir White Paper
 - ICPRB work group

Travilah Quarry Reservoir: A Key Facility Required for Water Supply Resiliency in the Washington Metropolitan Area



*A White Paper prepared jointly by the Washington Suburban
Sanitary Commission, the Washington Aqueduct, Fairfax Water,
and Loudoun Water
May 2018*