

SPECIAL REPORT



## The Smokestack Effect

# Toxic Air and America's Schools

USA TODAY used an EPA model to track the path of industrial pollution and mapped the locations of almost 128,000 schools to determine the levels of toxic chemicals outside. The potential problems that emerged were widespread, insidious and largely unaddressed.

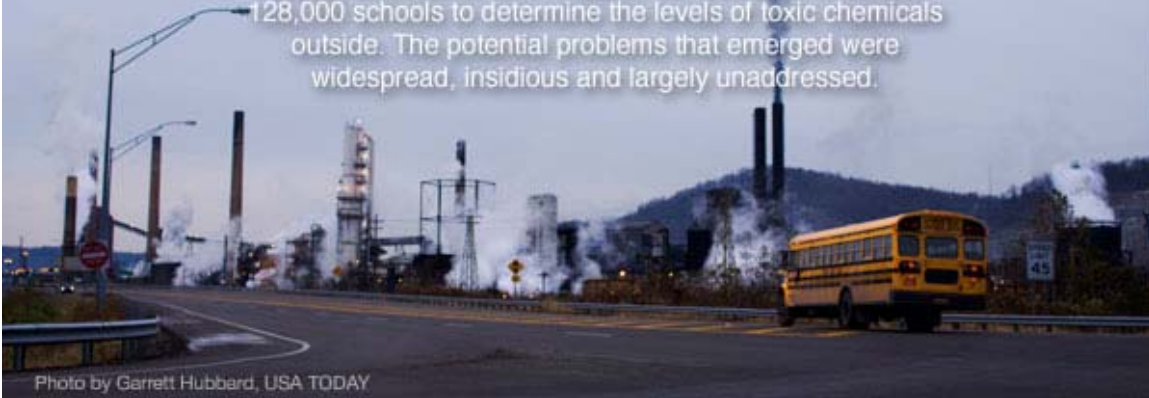


Photo by Garrett Hubbard, USA TODAY

Find your school   \*

<http://content.usatoday.com/news/nation/environment/smokestack/index>