

Washington-Baltimore Regional Airports
Monthly Enplanement Statistics
(November - October)
2009-2010, 2010-2011, 2011-2012

Table 1 shows twelve month (November through October) enplanement statistics for the three regional airports for the last three years. These data are graphed in Figure 1 through Figure 4. Table 2 shows the monthly enplanement percent change for the same time period for all three airports. Annual enplanements by destination are presented in Table 3 and percent changes in Table 4. Table 5 and Table 6 show monthly enplanements for domestic and international destinations and percent change by airport, respectively.

Some of the major findings include:

- Annual enplanements grew by 2.5 percent during the twelve month period of November 2011 to October 2012 when compared with November 2009 to October 2011 period, and less than 1 percent between November 2010 to October 2011.
- Baltimore/Washington International Thurgood Marshall Airport (BWI) and Ronald Reagan Washington National Airport (DCA) recorded growth of enplanements between November 2011 to October 2012 with 1.1 percent and 3.2 percent respectively while enplanements at Washington Dulles International Airport (IAD) declined by almost 3.2 percent.
- At BWI, while total enplanements increased by 1.1 percent between November 2011 to October 2012, international enplanements increased by 23 percent and domestic by 1 percent. However, domestic destination enplanements accounted for almost 50 percent of the total increase.
- At IAD, while total enplanements declined by almost 3 percent between November 2011 to October 2012, international enplanements show an increase of 1 percent.
- At (DCA), enplanements increased by 3.2 percent between November 2011 to October 2012. While domestic enplanements increased by 85 percent, international (trans-border, i.e., flights between the United States and Canada, plus flights to the Bahamas and Bermuda [seasonal] also show a 15 percent increase.
- While total enplanements at all airports grew by less than 1 percent during the twelve month period between November 2011 to October 2012, international destination enplanement increased by 3.7 percent. International enplanements at BWI gained a double digit increase while at DCA, this increase occurred from January through October, (see Table 5 and Table 6).

• **Table 1: Washington-Baltimore Regional Airports Monthly Enplanement Statistics (November - October)**

Month	2009/2010				2010/2011				2011/2012			
	BWI	DCA	IAD	Total	BWI	DCA	IAD	Total	BWI	DCA	IAD	Total
November	852,444	707,088	899,942	2,459,474	909,808	779,585	946,150	2,635,543	897,420	785,401	908,038	2,590,859
December	823,295	672,119	931,374	2,426,788	880,822	749,207	967,851	2,597,880	876,268	730,260	939,988	2,546,516
January	749,143	592,162	855,103	2,196,408	754,489	605,586	841,456	2,201,531	755,298	624,638	822,676	2,202,612
February	585,944	508,869	671,646	1,766,459	704,249	621,144	756,350	2,081,743	760,545	653,312	759,069	2,172,926
March	923,729	798,048	988,834	2,710,611	937,044	812,346	949,292	2,698,682	960,533	825,908	946,563	2,733,004
April	908,210	783,009	955,542	2,646,761	955,021	821,046	968,641	2,744,708	967,311	828,501	949,360	2,745,172
May	972,415	807,074	1,040,798	2,820,287	1,035,623	866,106	1,032,633	2,934,362	1,029,790	860,081	1,036,513	2,926,384
June	1,051,172	810,418	1,100,292	2,961,882	1,074,699	851,721	1,070,351	2,996,771	1,106,334	882,952	1,058,338	3,047,624
July	1,096,220	819,122	1,144,528	3,059,870	1,110,031	856,459	1,105,242	3,071,732	1,116,482	896,401	1,036,285	3,049,168
August	1,045,090	812,638	1,117,239	2,974,967	1,014,906	823,431	1,055,765	2,894,102	1,068,722	930,001	1,017,072	3,015,795
September	873,375	736,424	973,264	2,583,063	889,364	755,136	955,574	2,600,074	889,279	787,337	900,151	2,576,767
October	1,000,785	838,988	1,051,658	2,891,431	972,464	833,327	986,618	2,792,409	933,470	866,130	890,223	2,689,823
Total	10,881,822	8,885,959	11,730,220	31,498,001	11,238,520	9,375,094	11,635,923	32,249,537	11,361,452	9,670,922	11,264,276	32,296,650

Table 2: Washington-Baltimore Regional Airports Percent Change Monthly Enplanement Statistics (November - October)

Month	2009/2010 - 2010/2011				2010/2011 - 2011/2012				2009/2010 - 2011/2012			
	BWI	DCA	IAD	Total	BWI	DCA	IAD	Total	BWI	DCA	IAD	Total
November	6.7%	10.3%	5.1%	7.2%	-1.4%	0.7%	-4.0%	-1.7%	5.3%	11.1%	0.9%	5.3%
December	7.0%	11.5%	3.9%	7.1%	-0.5%	-2.5%	-2.9%	-2.0%	6.4%	8.7%	0.9%	4.9%
January	0.7%	2.3%	-1.6%	0.2%	0.1%	3.1%	-2.2%	0.0%	0.8%	5.5%	-3.8%	0.3%
February	20.2%	22.1%	12.6%	17.8%	8.0%	5.2%	0.4%	4.4%	29.8%	28.4%	13.0%	23.0%
March	1.4%	1.8%	-4.0%	-0.4%	2.5%	1.7%	-0.3%	1.3%	4.0%	3.5%	-4.3%	0.8%
April	5.2%	4.9%	1.4%	3.7%	1.3%	0.9%	-2.0%	0.0%	6.5%	5.8%	-0.6%	3.7%
May	6.5%	7.3%	-0.8%	4.0%	-0.6%	-0.7%	0.4%	-0.3%	5.9%	6.6%	-0.4%	3.8%
June	2.2%	5.1%	-2.7%	1.2%	2.9%	3.7%	-1.1%	1.7%	5.2%	9.0%	-3.8%	2.9%
July	1.3%	4.6%	-3.4%	0.4%	0.6%	4.7%	-6.2%	-0.7%	1.8%	9.4%	-9.5%	-0.3%
August	-2.9%	1.3%	-5.5%	-2.7%	5.3%	12.9%	-3.7%	4.2%	2.3%	14.4%	-9.0%	1.4%
September	1.8%	2.5%	-1.8%	0.7%	0.0%	4.3%	-5.8%	-0.9%	1.8%	6.9%	-7.5%	-0.2%
October	-2.8%	-0.7%	-6.2%	-3.4%	-4.0%	3.9%	-9.8%	-3.7%	-6.7%	3.2%	-15.4%	-7.0%
Total	3.3%	5.5%	-0.8%	2.4%	1.1%	3.2%	-3.2%	0.1%	4.4%	8.8%	-4.0%	2.5%

Figure 1
Washington-Baltimore Regional Airports
Monthly Enplanement Statistics

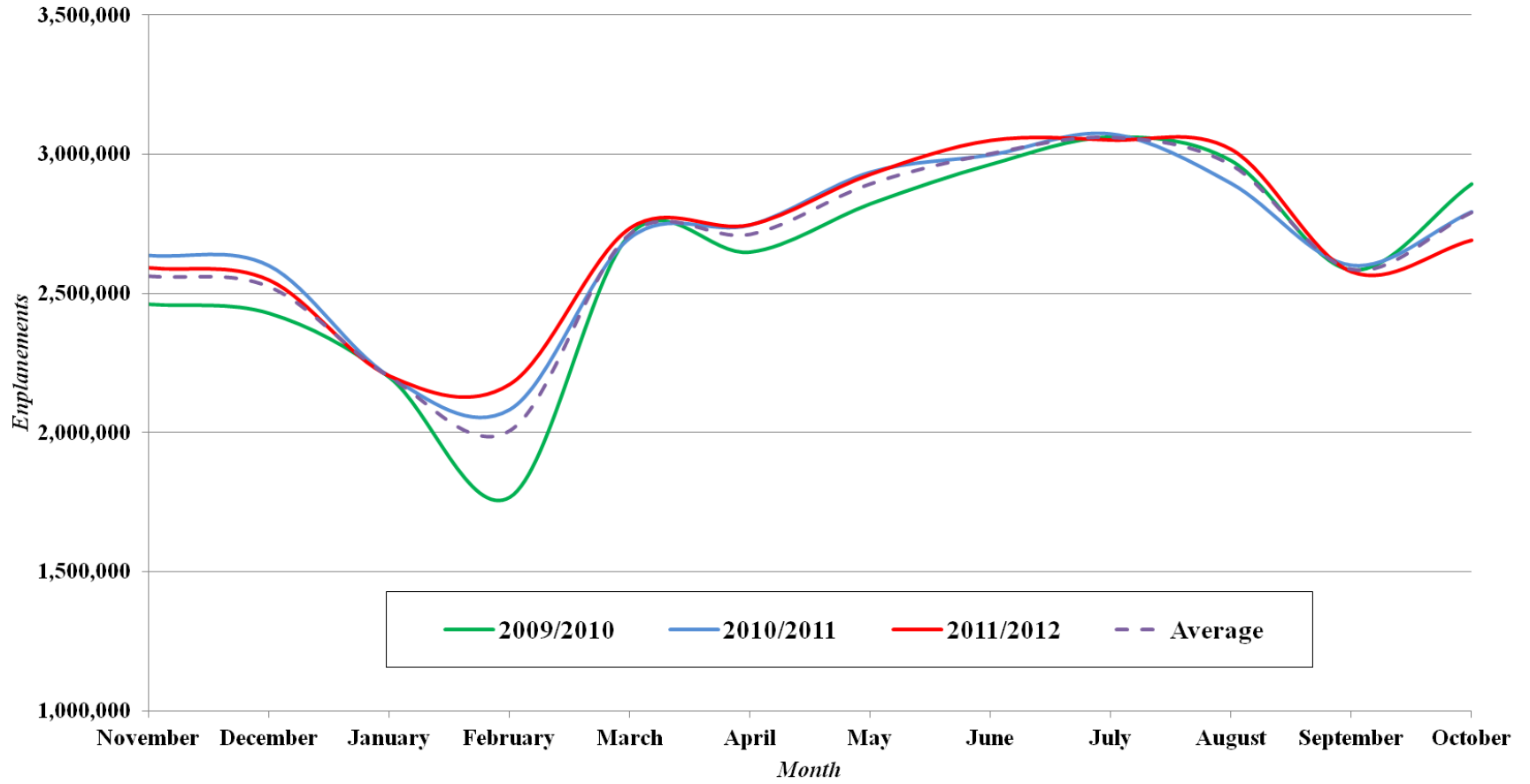


Figure 2
BWI Marshall International Airport
Monthly Enplanement Statistics

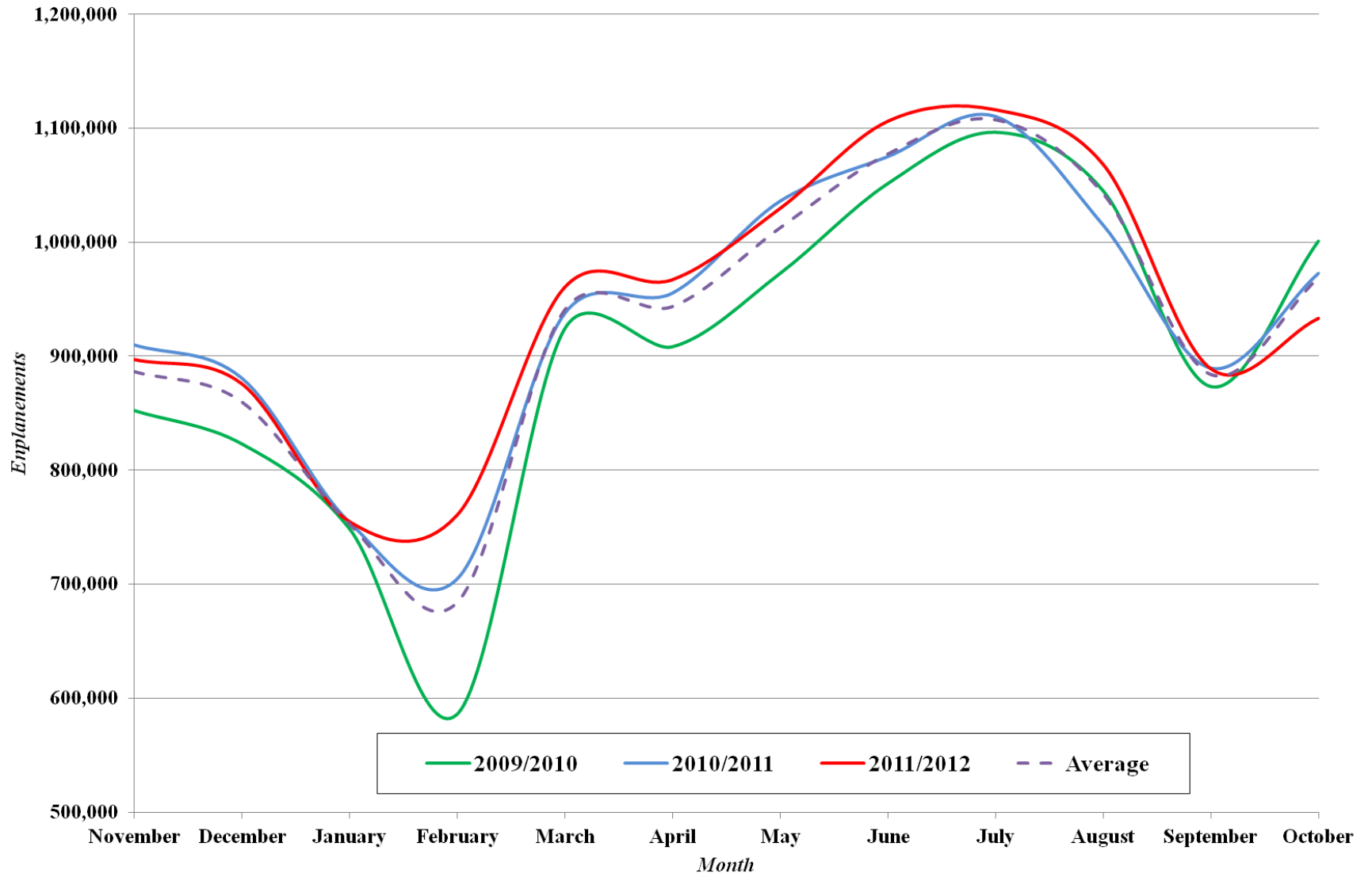


Figure 3
Dulles International Airport
Monthly Enplanement Statistics

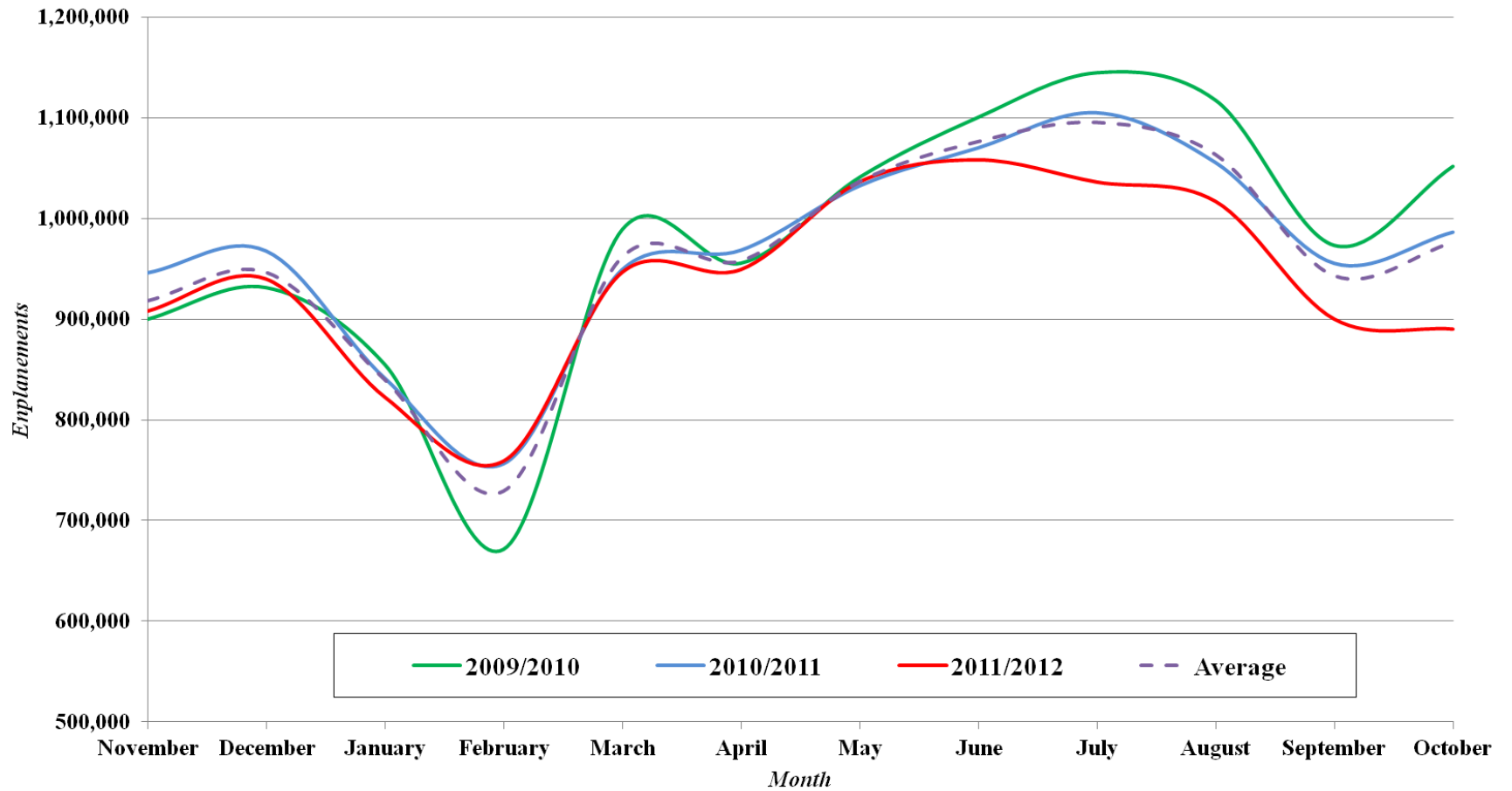


Figure 4
Reagan National Airport
Monthly Enplanement Statistics

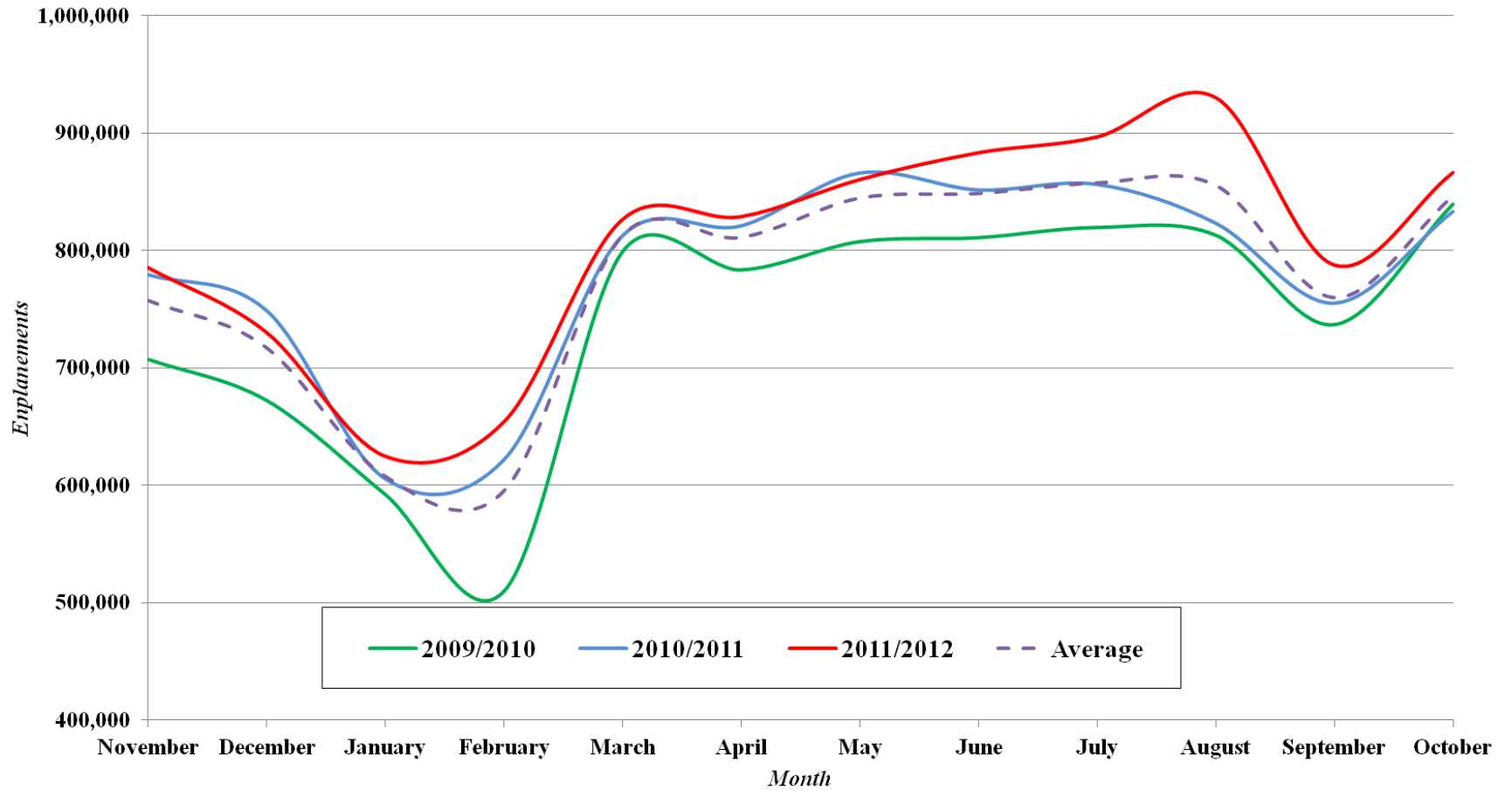


Table 3: Washington-Baltimore Regional Airports Annual Enplanement Statistics by Destination (November - October)

	BWI			DCA			IAD		
	Dom.	Inter.	Total	Dom.	Inter.	Total	Dom.	Inter.	Total
2009/2010	10,639,666	242,156	10,881,822	8,737,885	148,074	8,885,959	8,562,706	3,167,514	11,730,220
2010/2011	10,972,115	266,405	11,238,520	9,249,783	125,311	9,375,094	8,401,458	3,234,465	11,635,923
2011/2012	11,034,175	327,277	11,361,452	9,501,469	169,453	9,670,922	7,999,766	3,264,510	11,264,276

Table 4: Washington-Baltimore Regional Airports Percent Change Annual Enplanement Statistics by Destination (November - October)

	BWI			DCA			IAD		
	Dom.	Inter.	Total	Dom.	Inter.	Total	Dom.	Inter.	Total
2009/2010	3.1%	10.0%	3.3%	5.9%	-15.4%	5.5%	-1.9%	2.1%	-0.8%
2010/2011	0.6%	22.8%	1.1%	2.7%	35.2%	3.2%	-4.8%	0.9%	-3.2%
2011/2012	3.7%	35.2%	4.4%	8.7%	14.4%	8.8%	-6.6%	3.1%	-4.0%

Table 5: Washington-Baltimore Regional Airports Monthly Enplanement Statistics by Destination (November - October)

	2010 / 2011						2011 / 2012					
	BWI		DCA		IAD		BWI		DCA		IAD	
	Domestic	Inter.	Domestic	Inter.	Domestic	Inter.	Domestic	Inter.	Domestic	Inter.	Domestic	Inter.
November	890,477	19,331	770,833	8,752	708,486	237,664	875,301	22,119	776,018	9,383	672,318	235,720
December	860,740	20,082	740,198	9,009	703,610	264,241	852,846	23,422	721,129	9,131	683,836	256,152
January	736,677	17,812	597,670	7,916	606,681	234,775	734,841	20,457	615,752	8,886	601,219	221,457
February	687,482	16,767	613,482	7,662	563,476	192,874	739,970	20,575	644,595	8,717	576,142	182,927
March	914,960	22,084	801,702	10,644	700,642	248,650	935,298	25,235	812,905	13,003	687,535	259,028
April	932,462	22,559	810,919	10,127	703,353	265,288	938,589	28,722	815,591	12,910	688,119	261,241
May	1,009,599	26,024	854,194	11,912	732,045	300,588	1,000,503	29,287	844,145	15,936	723,613	312,900
June	1,047,570	27,129	837,695	14,026	747,952	322,399	1,074,426	31,908	866,219	16,733	717,383	340,955
July	1,082,073	27,958	842,766	13,693	784,921	320,321	1,082,724	33,758	878,423	17,978	715,402	320,883
August	988,341	26,565	810,939	12,492	757,355	298,410	1,034,897	33,825	906,971	23,030	700,875	316,197
September	870,537	18,827	746,405	8,731	668,781	286,793	861,583	27,696	770,925	16,412	608,137	292,014
October	951,197	21,267	822,980	10,347	724,156	262,462	903,197	30,273	848,796	17,334	625,187	265,036
Total	10,972,115	266,405	9,249,783	125,311	8,401,458	3,234,465	11,034,175	327,277	9,501,469	169,453	7,999,766	3,264,510

Table 6: Washington-Baltimore Regional Airports Percent Change Monthly Enplanement by Destination (November - October)

	2009/ 2010						2010 / 2011					
	BWI		DCA		IAD		BWI		DCA		IAD	
	Domestic	Inter.	Domestic	Inter.	Domestic	Inter.	Domestic	Inter.	Domestic	Inter.	Domestic	Inter.
November	7%	17%	11%	-19%	6%	3%	-2%	14%	1%	7%	-5%	-1%
December	7%	10%	12%	-16%	5%	1%	-1%	17%	-3%	1%	-3%	-3%
January	1%	2%	3%	-14%	-2%	-2%	0%	15%	3%	12%	-1%	-6%
February	21%	7%	23%	-7%	13%	12%	8%	23%	5%	14%	2%	-5%
March	1%	0%	2%	-19%	-5%	0%	2%	14%	1%	22%	-2%	4%
April	5%	8%	5%	-19%	-3%	14%	1%	27%	1%	27%	-2%	-2%
May	6%	18%	8%	-13%	-2%	2%	-1%	13%	-1%	34%	-1%	4%
June	2%	13%	6%	-15%	-5%	3%	3%	18%	3%	19%	-4%	6%
July	1%	21%	5%	-20%	-6%	3%	0%	21%	4%	31%	-9%	0%
August	-3%	15%	2%	-23%	-7%	-1%	5%	27%	12%	84%	-7%	6%
September	2%	4%	3%	-14%	-3%	1%	-1%	47%	3%	88%	-9%	2%
October	-3%	2%	-1%	4%	-7%	-5%	-5%	42%	3%	68%	-14%	1%
Total	3%	10%	6%	-15%	-2%	2%	1%	23%	3%	35%	-5%	1%