

ELEVATING EQUITY EMPHASIS AREAS

Overarching Planning Concept For Decision Making

Chuck Bean
COG Executive Director

COG Board of Directors
September 8, 2021



Region's Commitment to Equity

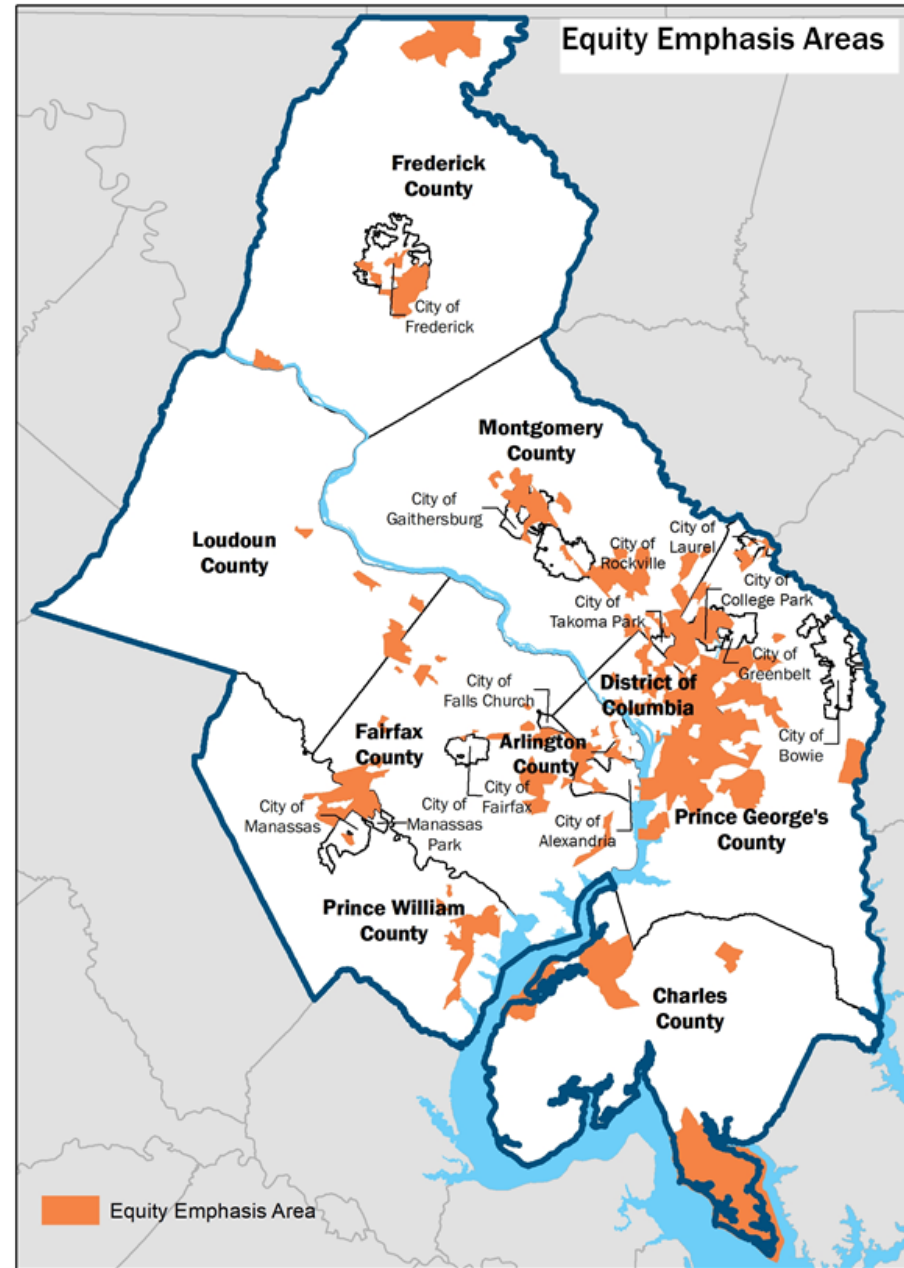
“The board affirms that **our work together** as the Metropolitan Washington Council of Governments **will be anti-racist and will advance equity**;

The board affirms that **equity will be woven into COG's Region Forward Vision to ensure a more prosperous, accessible, livable, sustainable, and equitable future for all area residents** and throughout COG's analyses, operations, procurement, programs, and priorities.”

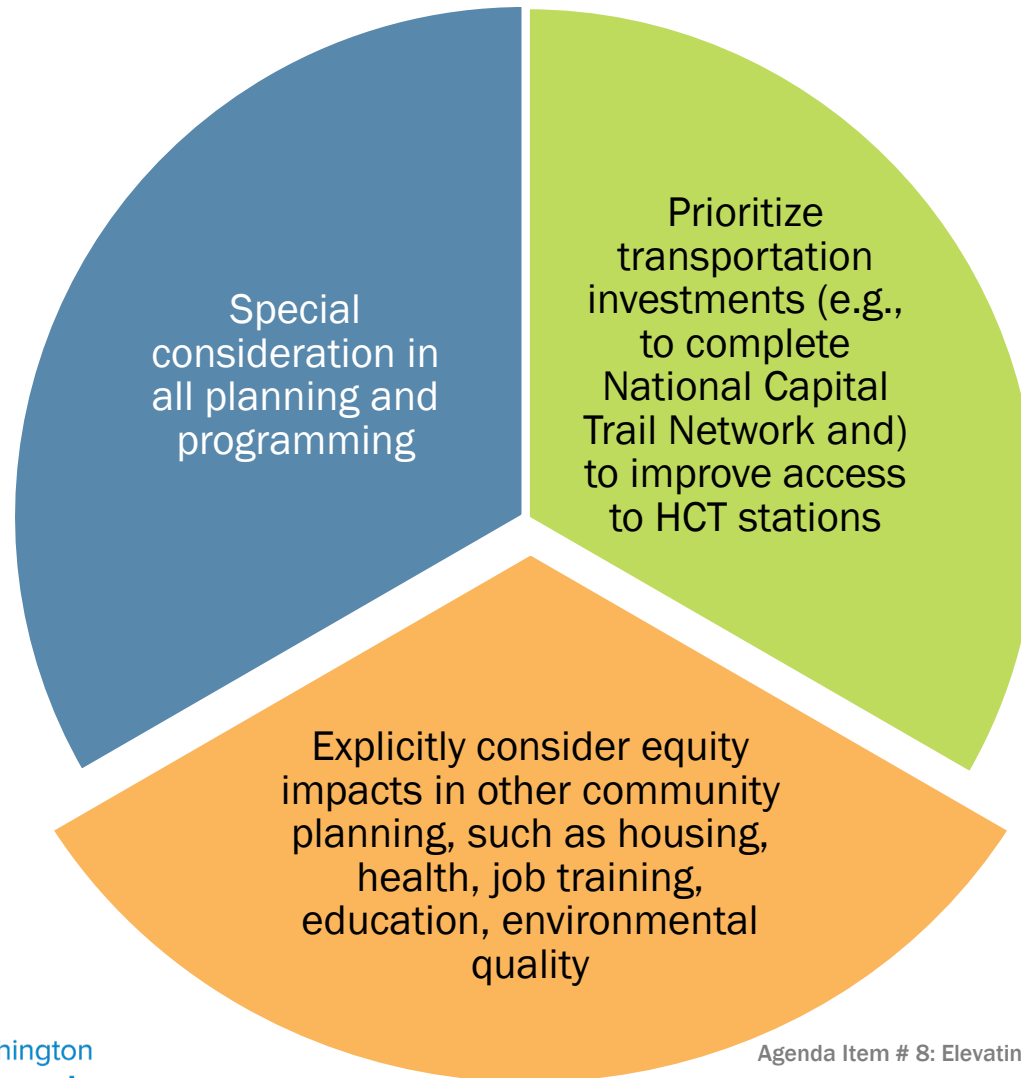
COG Board of Directors, July 2020

Equity Emphasis Areas (EEAs)

- Locations in the region with higher-than-average concentration of low-income and/or racial and ethnic minorities
- About 350 of 1,200 Census tracts– 10% land area
 - About 30% of population
- Overlapping planning constructs
 - 340 within 1 mile of an Activity Center
 - 214 within ½ mile of HCT
 - 308 within ½ mile of the National Capital Trail Network



Integrating Equity Considerations



Chuck Bean

COG Executive Director

(202) 962-3260

cbean@mwcog.org

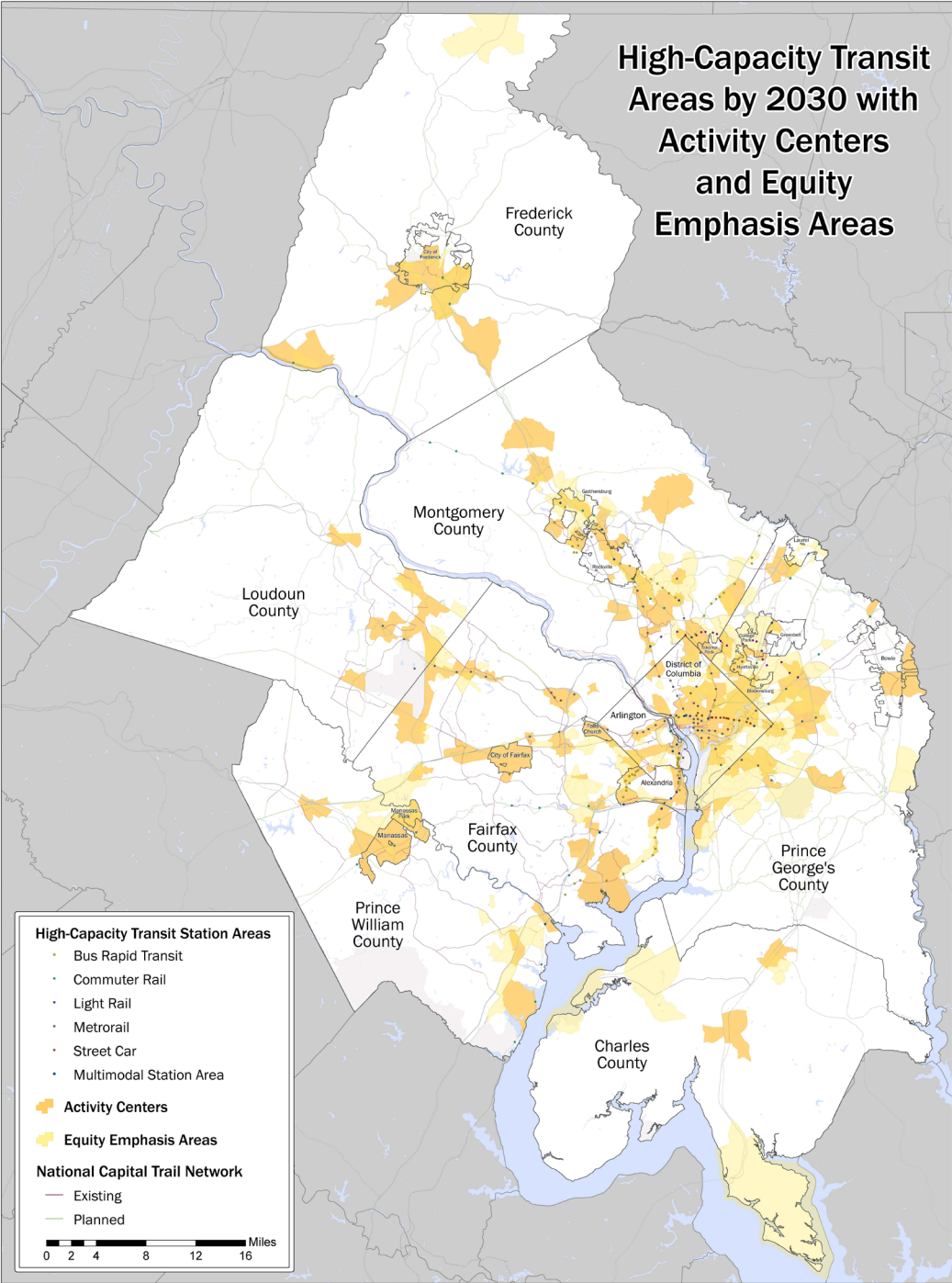
mwcog.org

777 North Capitol Street NE, Suite 300
Washington, DC 20002



Metropolitan Washington
Council of Governments

High-Capacity Transit Areas by 2030 with Activity Centers and Equity Emphasis Areas



High-Capacity Transit Station Areas

- Bus Rapid Transit
- Commuter Rail
- Light Rail
- Metrorail
- Street Car
- Multimodal Station Area

Activity Centers

Equity Emphasis Areas

National Capital Trail Network

- Existing
- Planned

0 2 4 8 12 16 Miles