

TPB Regional Public Transportation Subcommittee

Great Seneca Ride On extRa Service

June 25, 2024



***PHASE 1 TRANSIT SERVICE PLAN
AND BUS PRIORITY***



Unleashing Economic Growth

Great Seneca Science Corridor is a key piece of the County's biotech, life sciences economy

Essential Workers and Essential Work

Health care, vaccine research, and education are all happening here

Neighborhood Connectivity

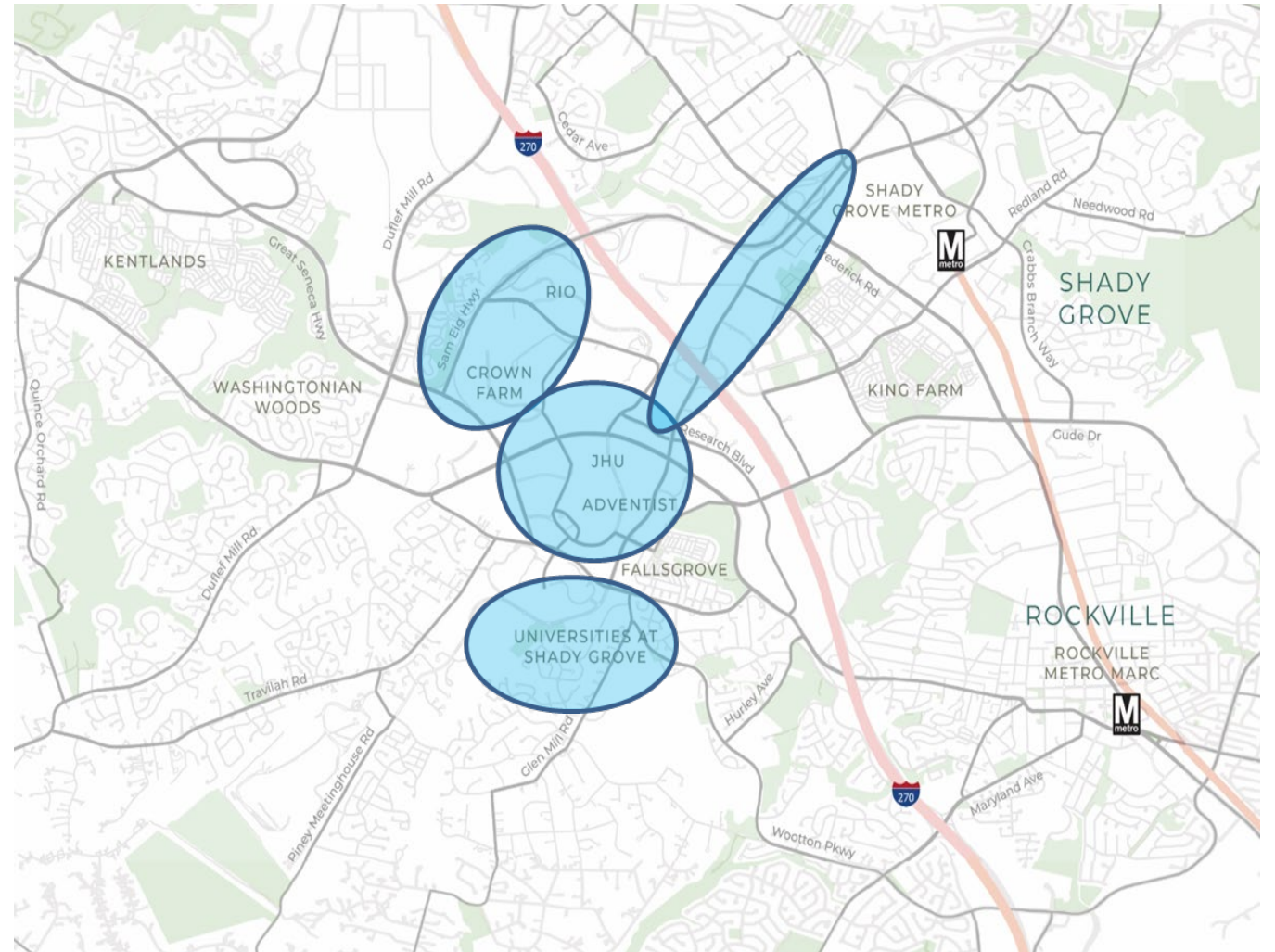
Need for direct bus transit for residents and workers to get to their destination

Supporting the Great Seneca Science Corridor Vision

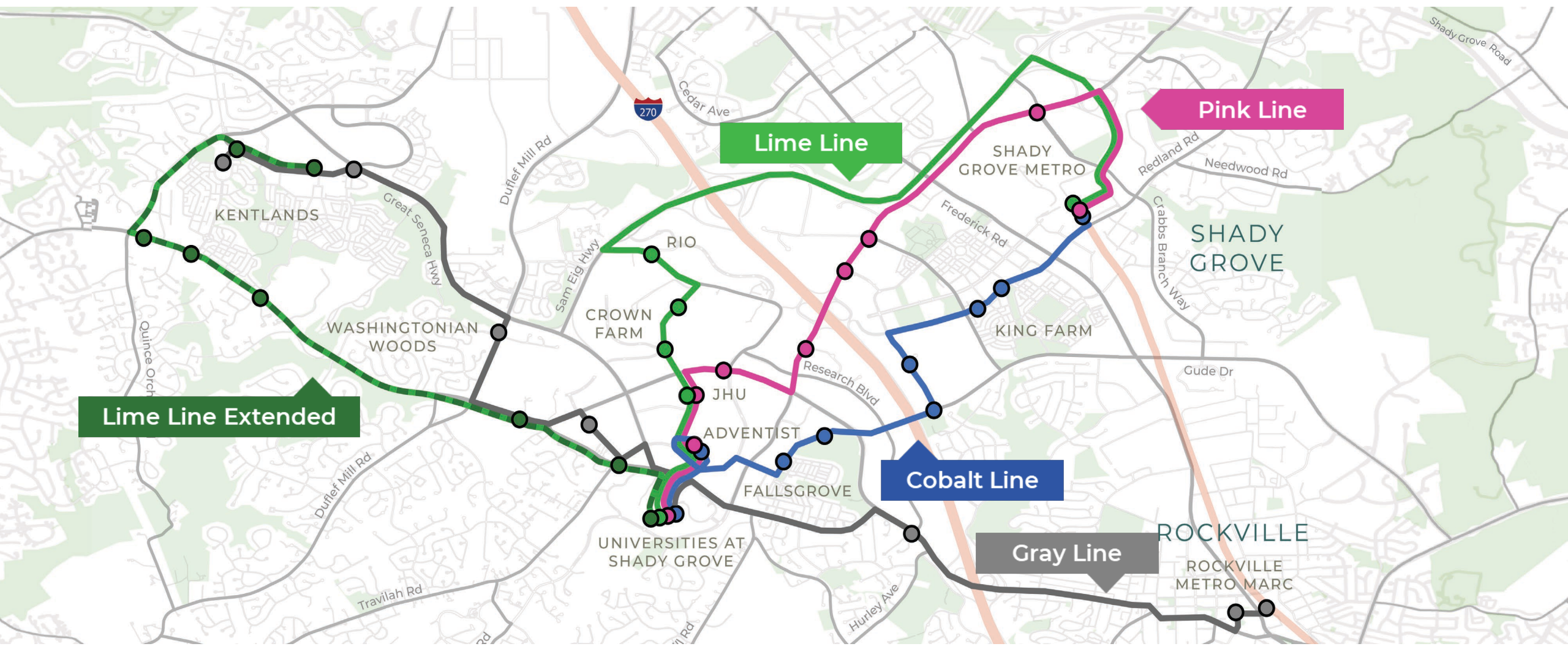
Connecting Transit and Activity Centers

Connect WMATA Metrorail Red Line Shady Grove Metro Station to activity/development centers:

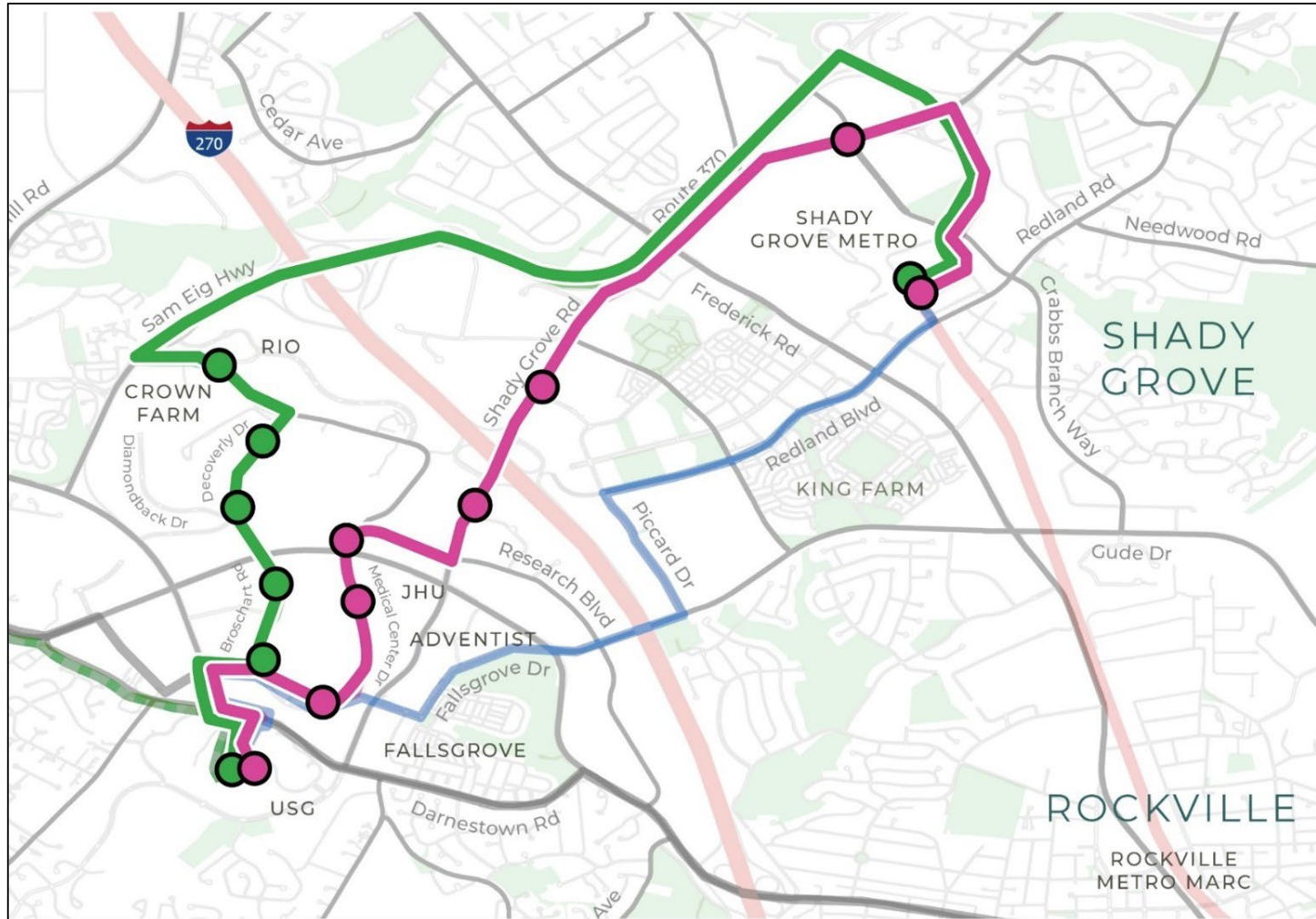
- RIO Center
- Crown Farm
- Adventist Shady Grove Medical Center
- Universities at Shady Grove
- Trville Village
- Shady Grove Road corridor



Great Seneca Transit Network (All Phases)



Great Seneca Ride On extRa Phase 1 Routes



Phase 1 will include the Pink and Lime routes

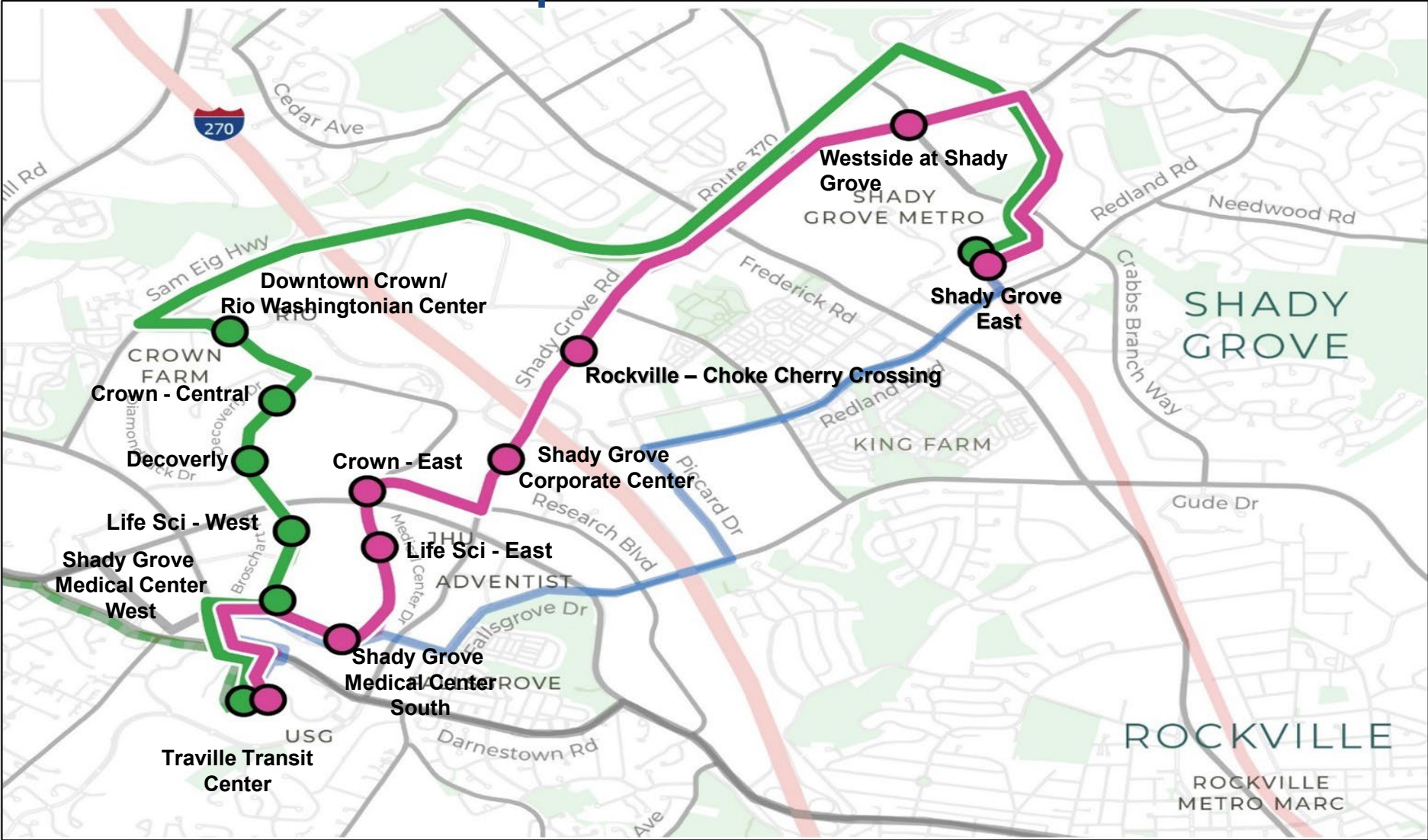
Pink Route

Links the busy Shady Grove corridor with Life Sciences Center via Medical Center Drive

Lime Route

Uses I-370 to provide an express route to RIO, Crown Farm, and heart of the Life Science Center

Ride On extRa Stop Locations



Service Frequencies

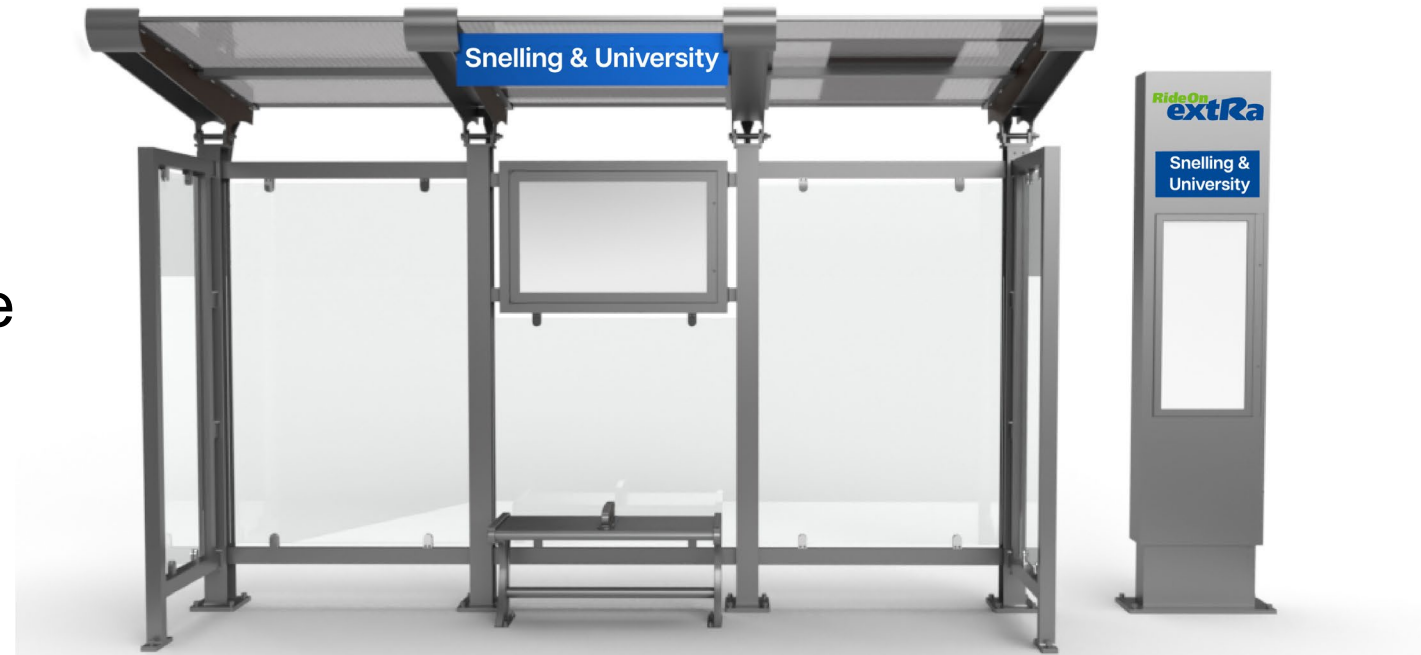
During this time...

Buses run every...

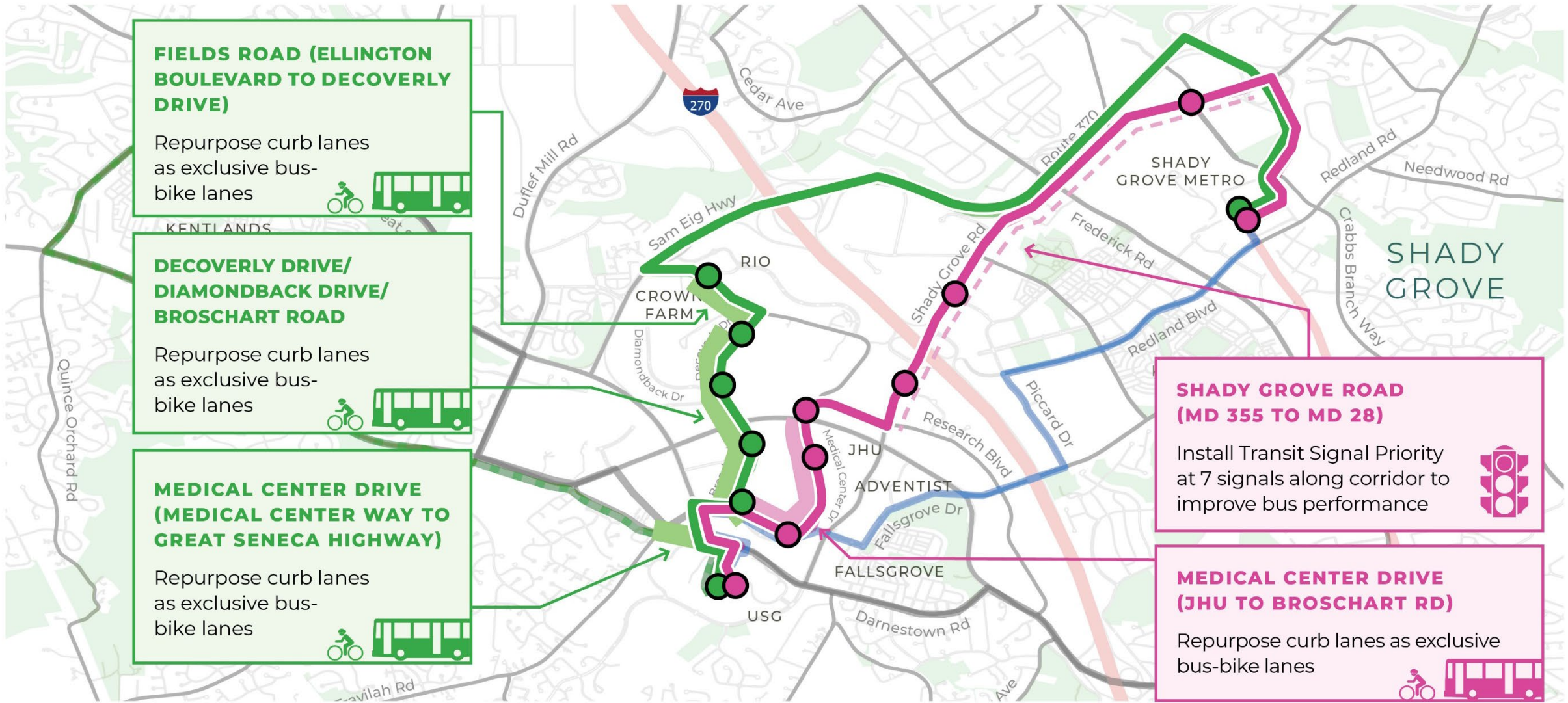
Time Period	Pink Route	Lime Route
Weekday Peak	10 minutes	15 minutes
Weekday Off-peak	15 minutes	15 minutes
Weekends	30 minutes	30 minutes

Shelter Design

- Branded for Ride On extRa
- Shade roof with built-in lighting
- Real-time information display case
- Bench and trash can
- Co-located with branded standalone marker/pylon



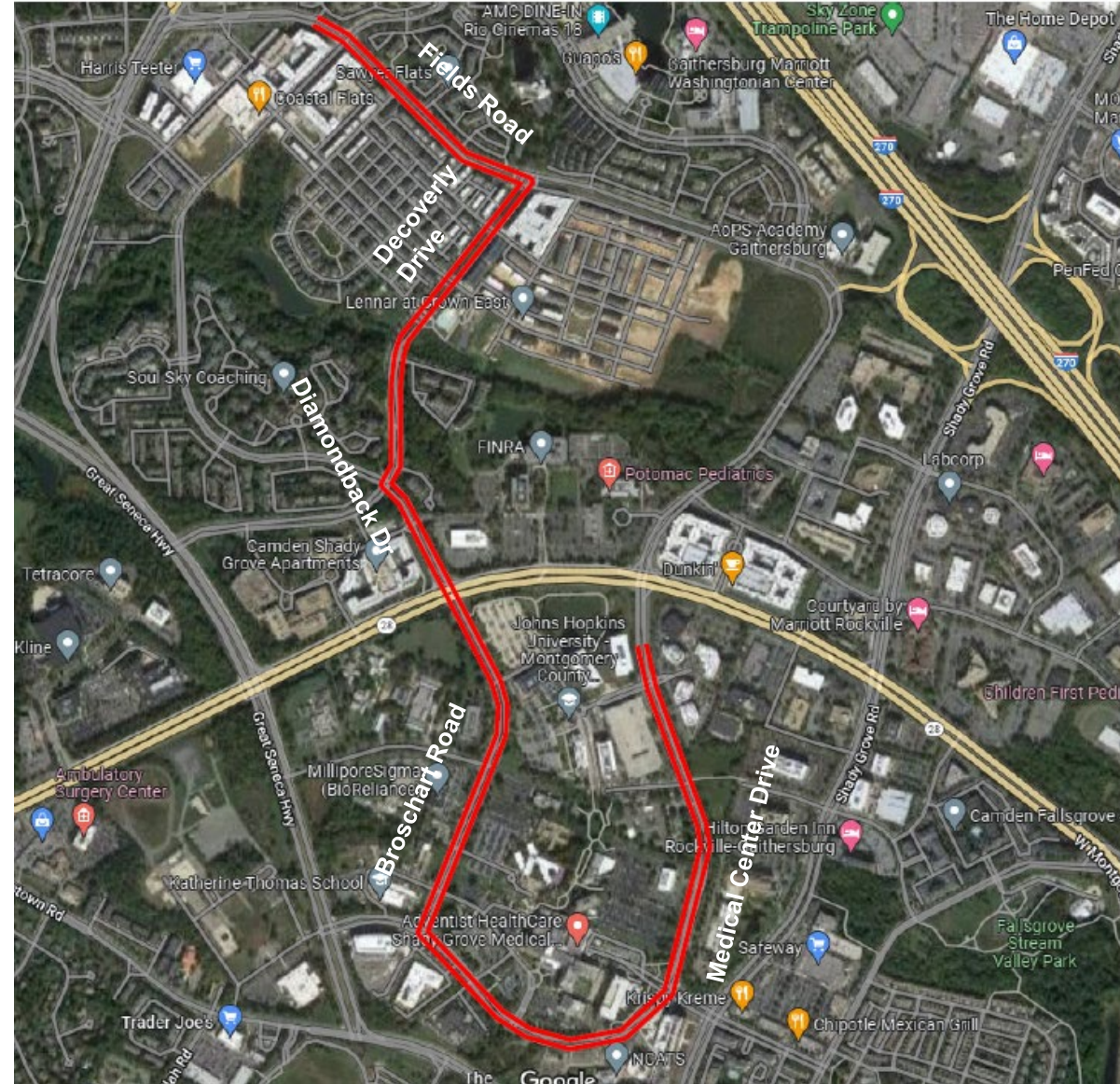
Transit Operations Improvements



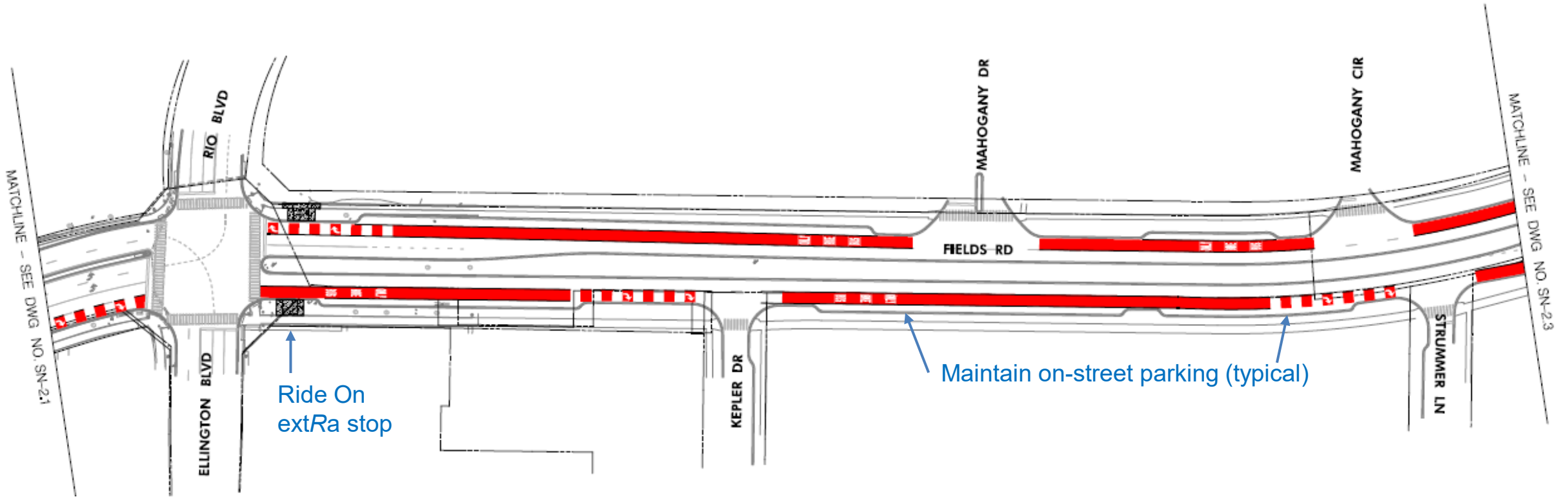
Dedicated Bus Lanes

Dedicated transit lanes are proposed within existing roadways to speed bus travel times:

- Repurpose curbside mixed travel/parking lanes for shared bus and bicycle use
- Maintain on-street parking in RIO/Crown Farm
- Traffic may use dedicated lane for right turns



Dedicated Lane Treatments



PROJECT BENEFITS



Project Benefits



Economic Growth

Great Seneca is at the heart of the County's biotech, life sciences economy



Transit Improvements

Improving the quality of transit attracts more riders and improves the experience for existing riders



Connectivity and Collaboration

Hubs at JHU, Adventist Shady Grove Medical and USG connect workers and higher education in the biotech ecosystem



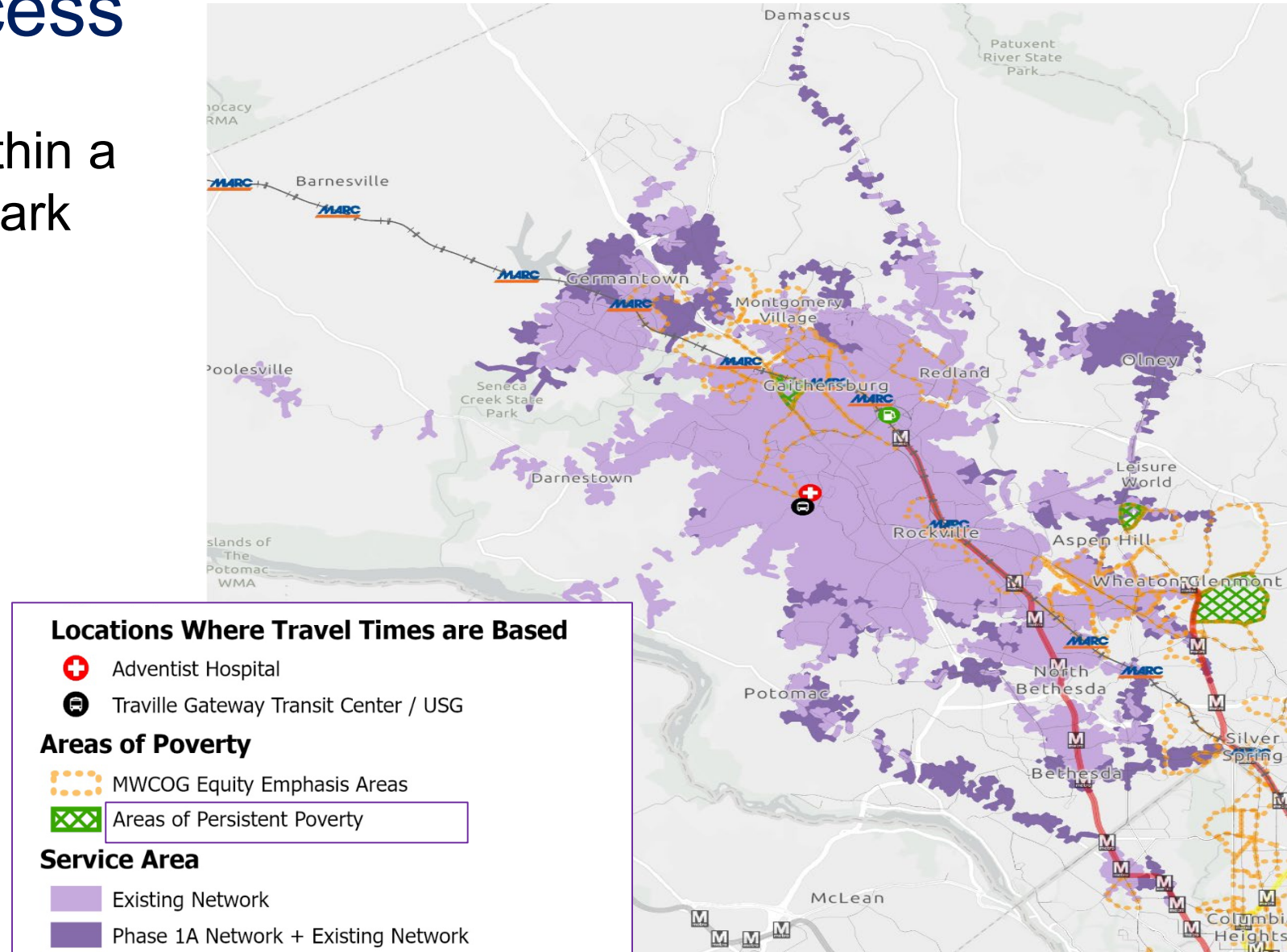
Sustainability

This will help the County meet ambitious climate goals by shifting more people to transit and implementing zero emission fleet

Improving Transit Access

- Increased access to areas within a 60-minute travel timeframe (dark purple)
- Expanded service to equity emphasis areas and areas of persistent poverty

Existing and Phase 1 Service Area (60-minute Travel Time)



Zero Emission Bus Fleet

MCDOT is fast tracking Great Seneca Ride On extRa Phase 1 construction and transitioning to battery electric technology after service starts



MCDOT to implement zero emission Ride On buses, which aligns with county's sustainability goals



Project Timeline

