

ECONOMIC IMPACT OF THE COVID-19 SHUTDOWN ON THE WASHINGTON REGION

DCPS Research Team
COG Community Planning and Services

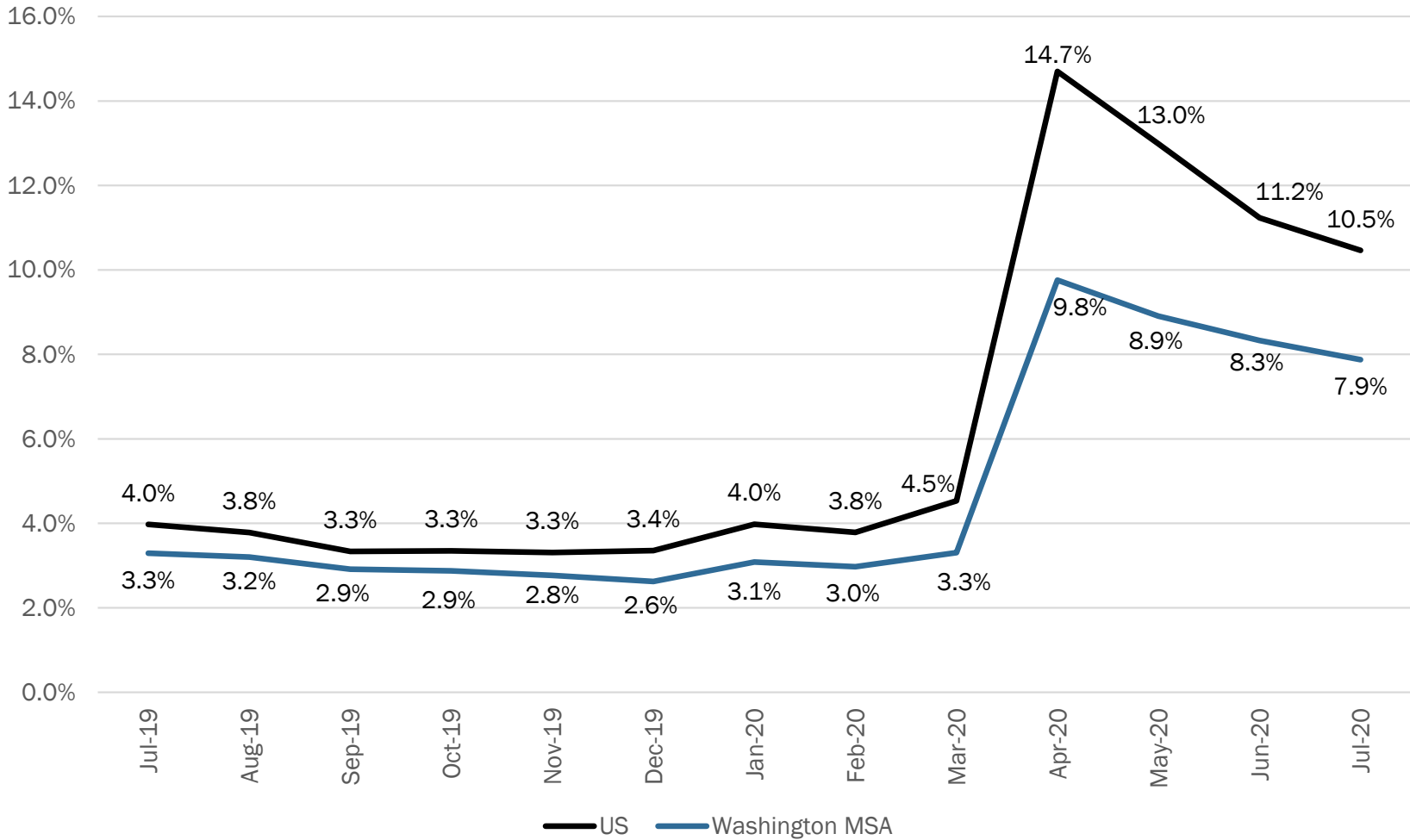
Cooperative Forecasting and Data Subcommittee
September 8, 2020



Metropolitan Washington
Council of Governments

Unemployment Rate Washington MSA and US

Source: Bureau of Labor Statistics, Not Seasonally Adjusted



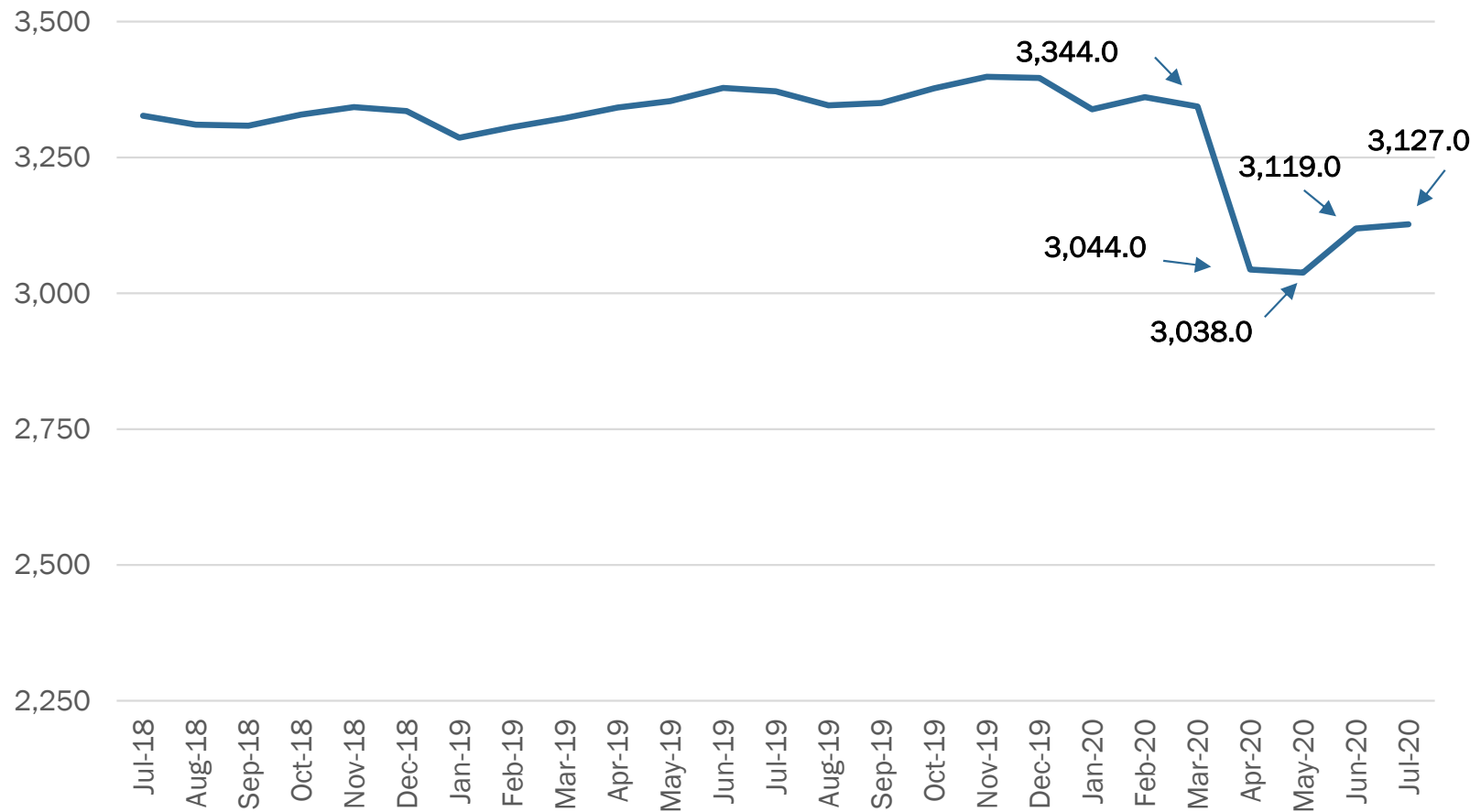
Unemployment Rate by COG Jurisdiction for February and July 2020

Source: Bureau of Labor Statistics, Not Seasonally Adjusted



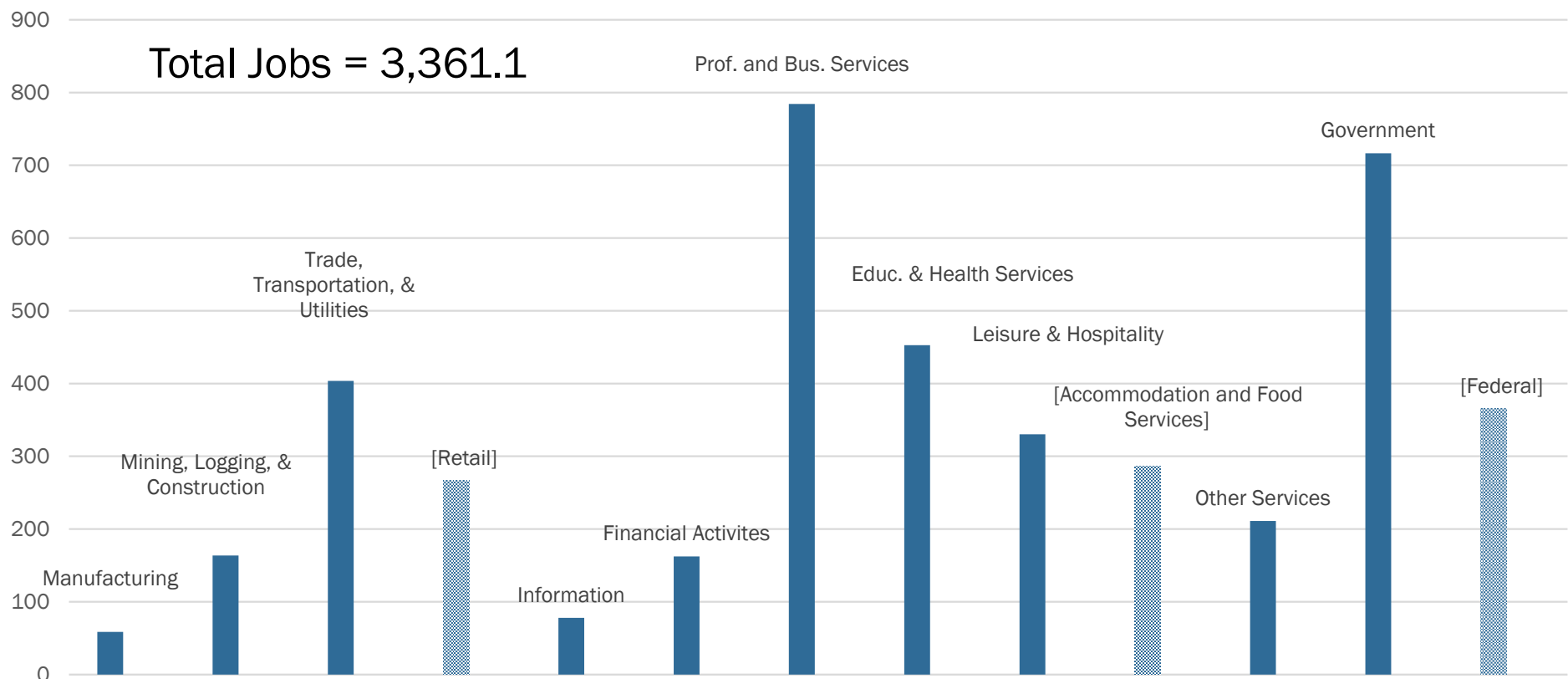
Number of Non-Farm Jobs – Washington MSA

Source: Bureau of Labor Statistics, Not Seasonally Adjusted (1,000s of jobs)



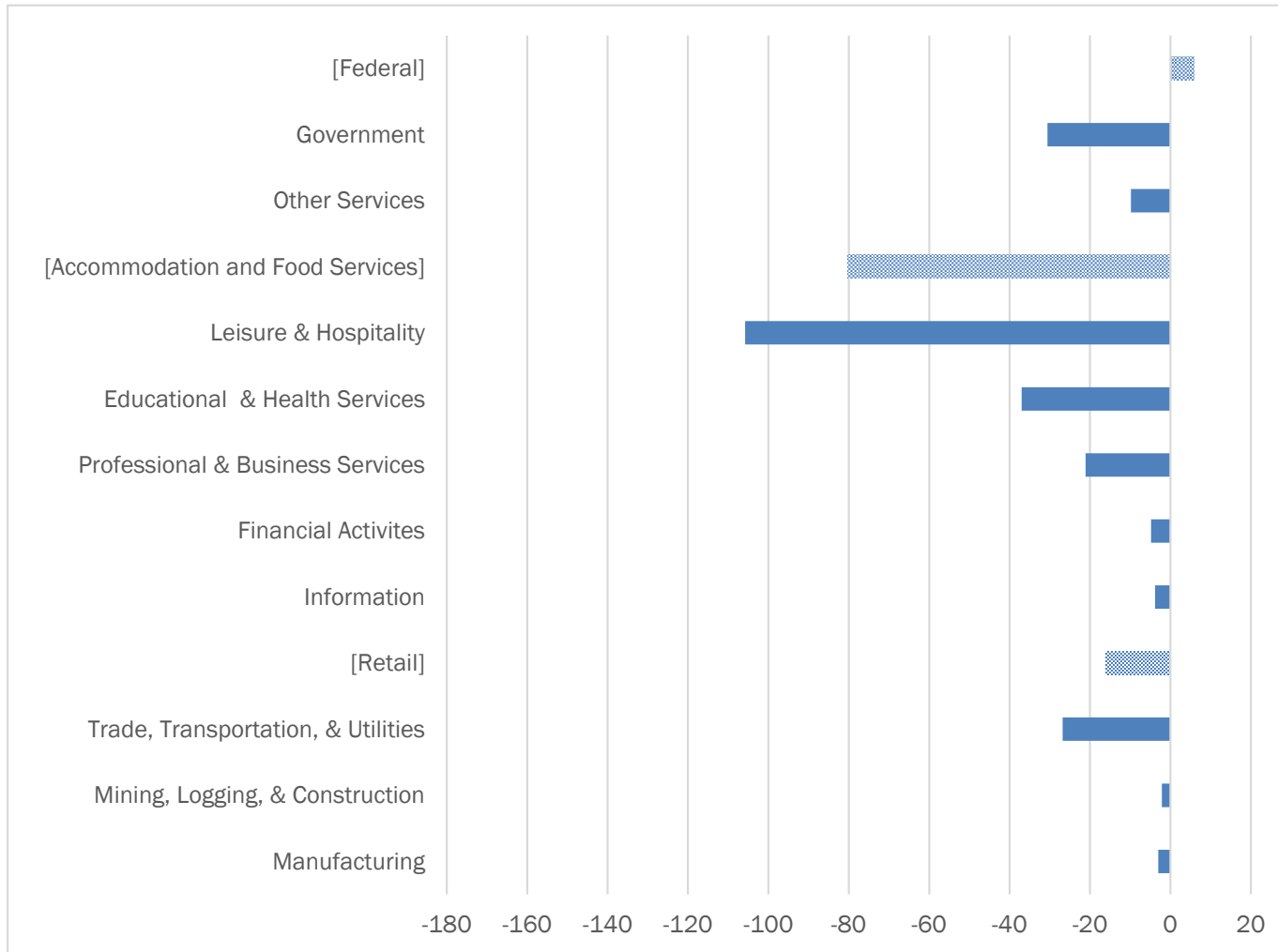
Washington MSA Employment by Industry Group for February 2020

Source: Bureau of Labor Statistics, Not Seasonally Adjusted (1,000s of Jobs)



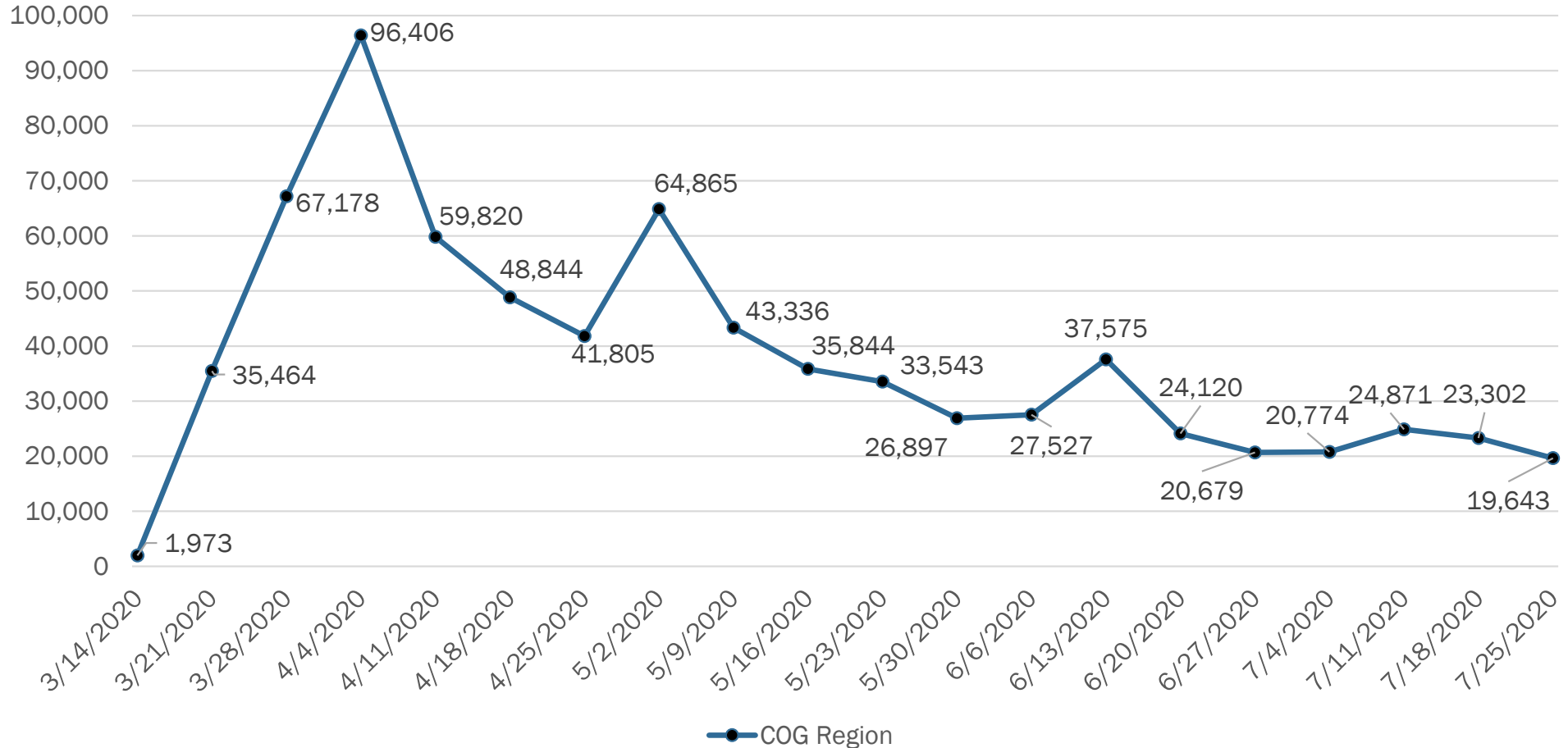
Washington MSA Over-the-Year July Employment Change by Industry Group

Source: Bureau of Labor Statistics, Not Seasonally Adjusted (1,000s of Jobs)

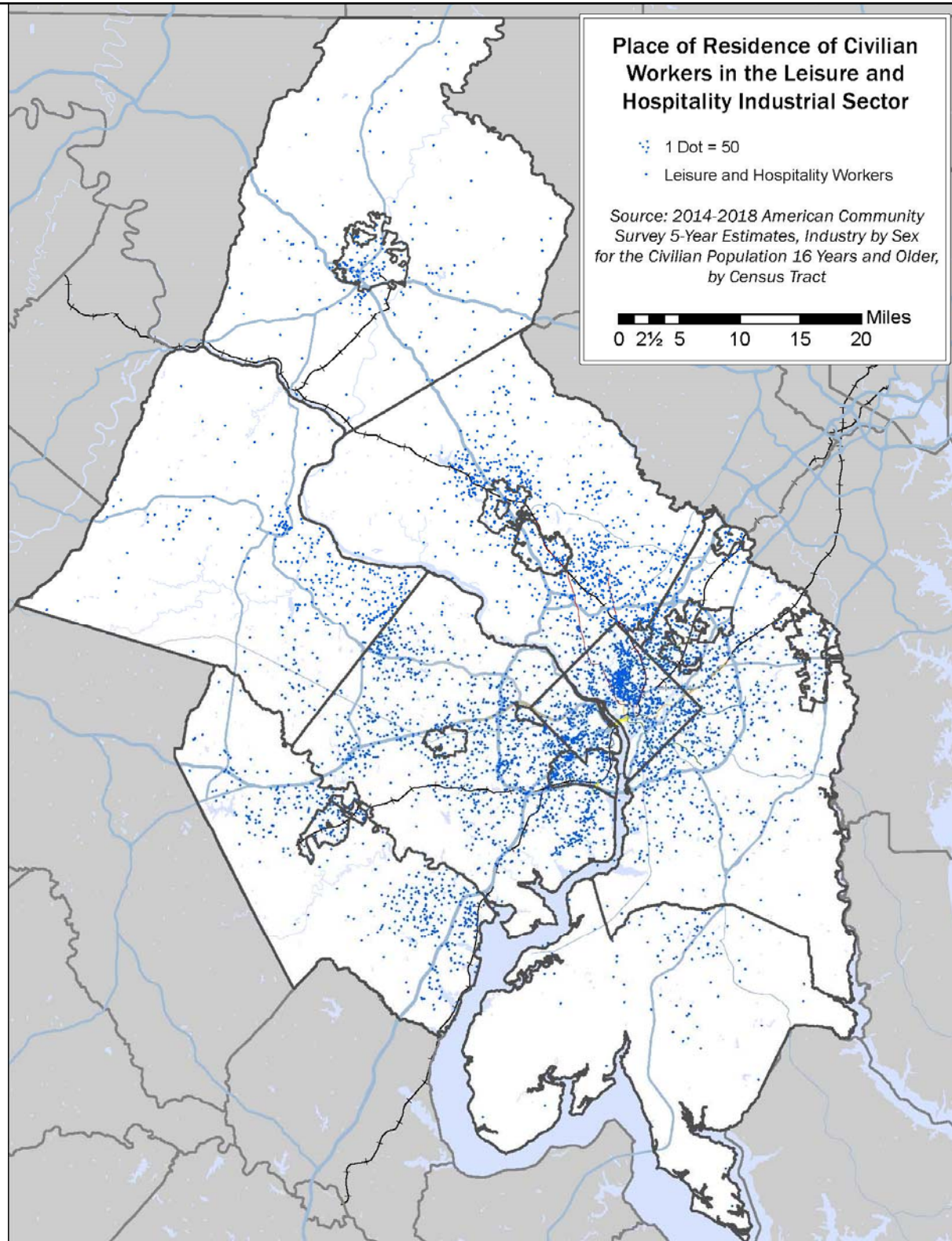


Unemployment Insurance Claims March 14 – July 25

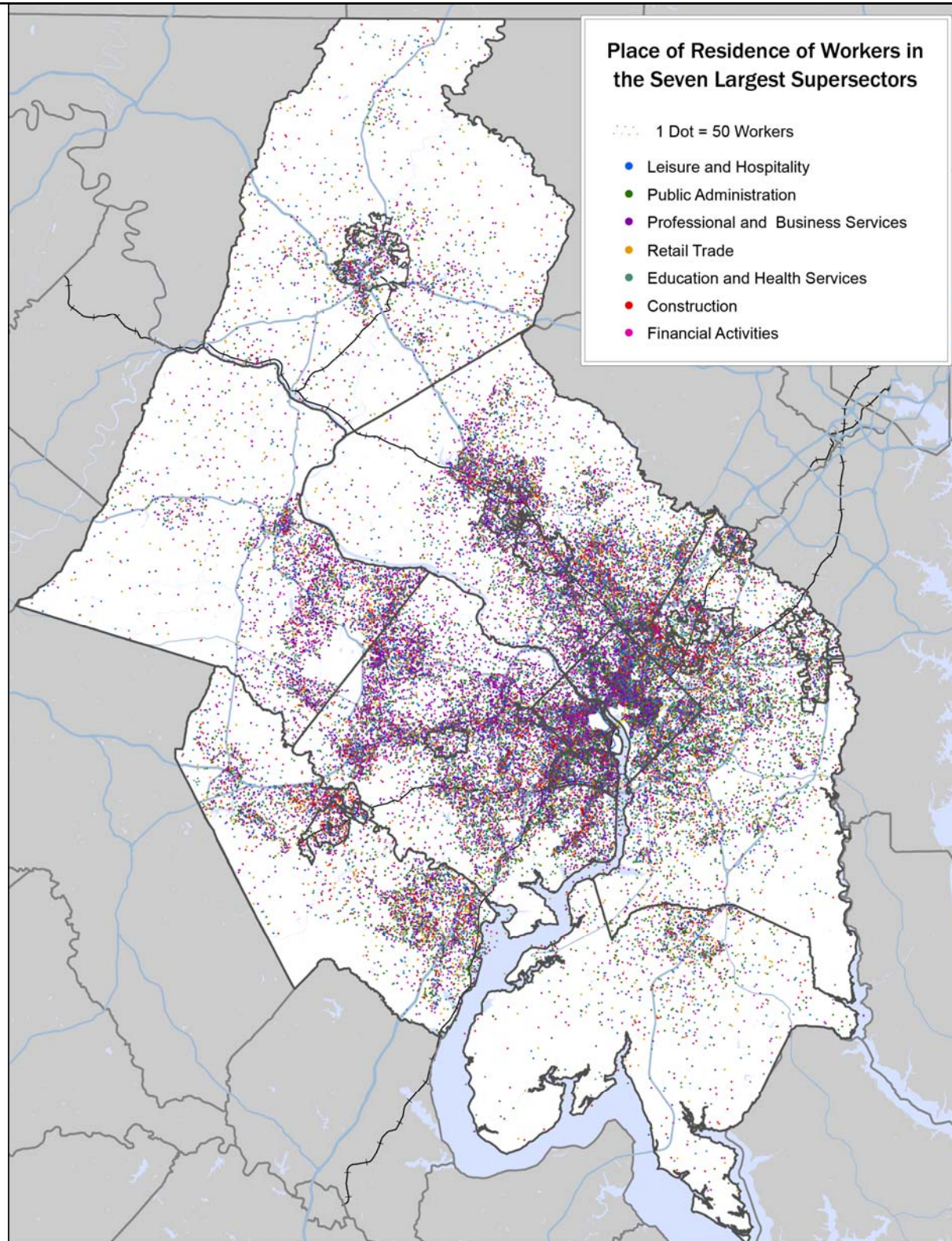
Source: DC Department of Employment Services, Maryland Department of Labor, Licensing, and Regulation and the Virginia Employment Commission



- Leisure and Hospitality Workers – those most vulnerable to the social distancing related layoffs – live throughout the region
- Neighborhoods with the highest concentrations of leisure and hospitality workers include east of Rock Creek Park in the District of Columbia, western Alexandria, South Arlington, Herndon and Annandale in Fairfax County, along US 1 in Fairfax and Prince William Counties, and Wheaton and Twinbrook in Montgomery County



- Generally, workers in each industry live all around the region
- Concentrations of leisure and hospitality, construction and retail trade employees can be found across COG's jurisdictions but mostly in lower cost communities.
- Professional and business service workers predominate in western jurisdictions
- Public administration workers are mostly found in eastern neighborhoods
- Education and health service workers are concentrated in Maryland.



Questions?
