



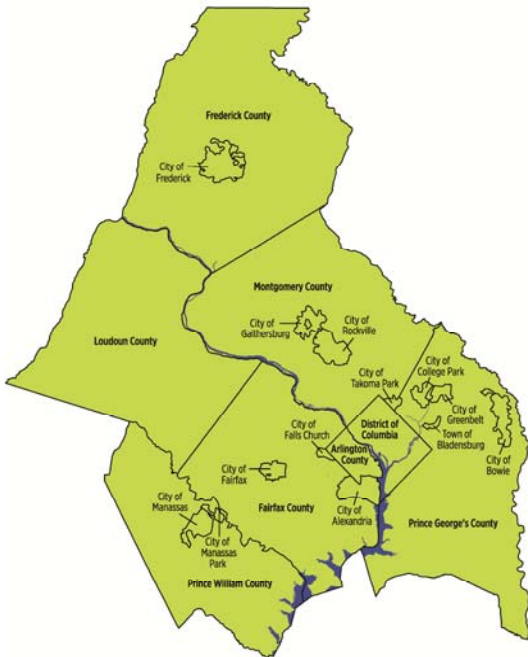
In this report:

Population	1
Nativity and Citizenship	1
Median Household Income	2-3
Poverty	3-4
Housing Cost Burden	5
Education	5-7
Journey to Work	8

The American Community Survey (ACS) is an annual, nationwide survey from the U.S. Census Bureau designed to provide communities a fresh look at how they are changing. The ACS collects a wide variety of information, including age, race, income, commute time to work, home value, and other data from the U.S. population.

This report uses the ACS five-year estimates based on data collected between January 1, 2005 and December 31, 2009. Five-year estimates are available for every state, county, city, town, place, American Indian Area, Alaska Native Area, and Hawaiian Home Land, as well as for census tracts and block groups. Because this dataset reflects a five-year period, it can not be compared directly with Decennial Census data or with one-year ACS datasets. Due to the small sample size of the ACS, the data have larger margins of error than the Decennial Census, particularly at geographic levels lower than the jurisdiction.

This report provides a “snapshot” of the ACS five-year data for the Washington Metropolitan Region. Tables and charts summarize data for each COG member jurisdiction, while maps provide data at the Census tract level to highlight variations within jurisdictions. Subsequent reports in this series will provide in-depth analysis on selected topics from the ACS.



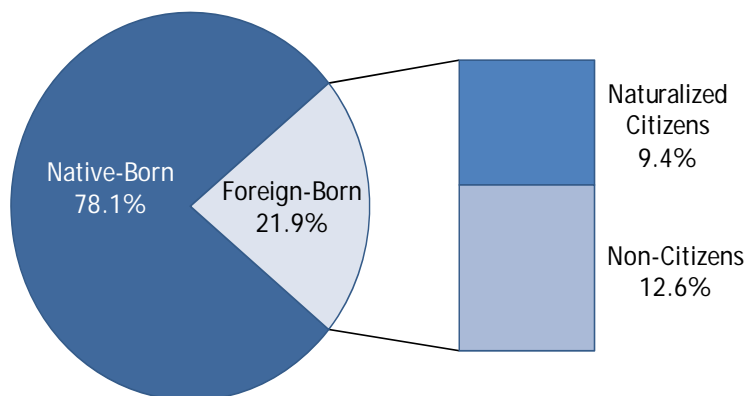
Total Population (Estimate), 2005—2009

Jurisdiction	Population	Jurisdiction	Population
District of Columbia	588,433	City of Alexandria	142,131
Frederick County	165,246	Arlington County	206,405
City of Frederick	58,939	Fairfax County	1,012,751
Montgomery County	809,963	City of Fairfax	23,369
City of Gaithersburg	58,632	City of Falls Church	11,233
City of Rockville	59,825	Loudoun County	277,465
City of Takoma Park	17,752	Prince William County	360,910
Prince George's County	724,935	City of Manassas	35,559
City of Bowie	53,572	City of Manassas Park	11,633
City of College Park	27,202	Northern Virginia	2,081,456
City of Greenbelt	21,536	COG Member Jurisdictions	4,675,232
Town of Bladensburg	7,741		
Suburban Maryland	2,005,343		

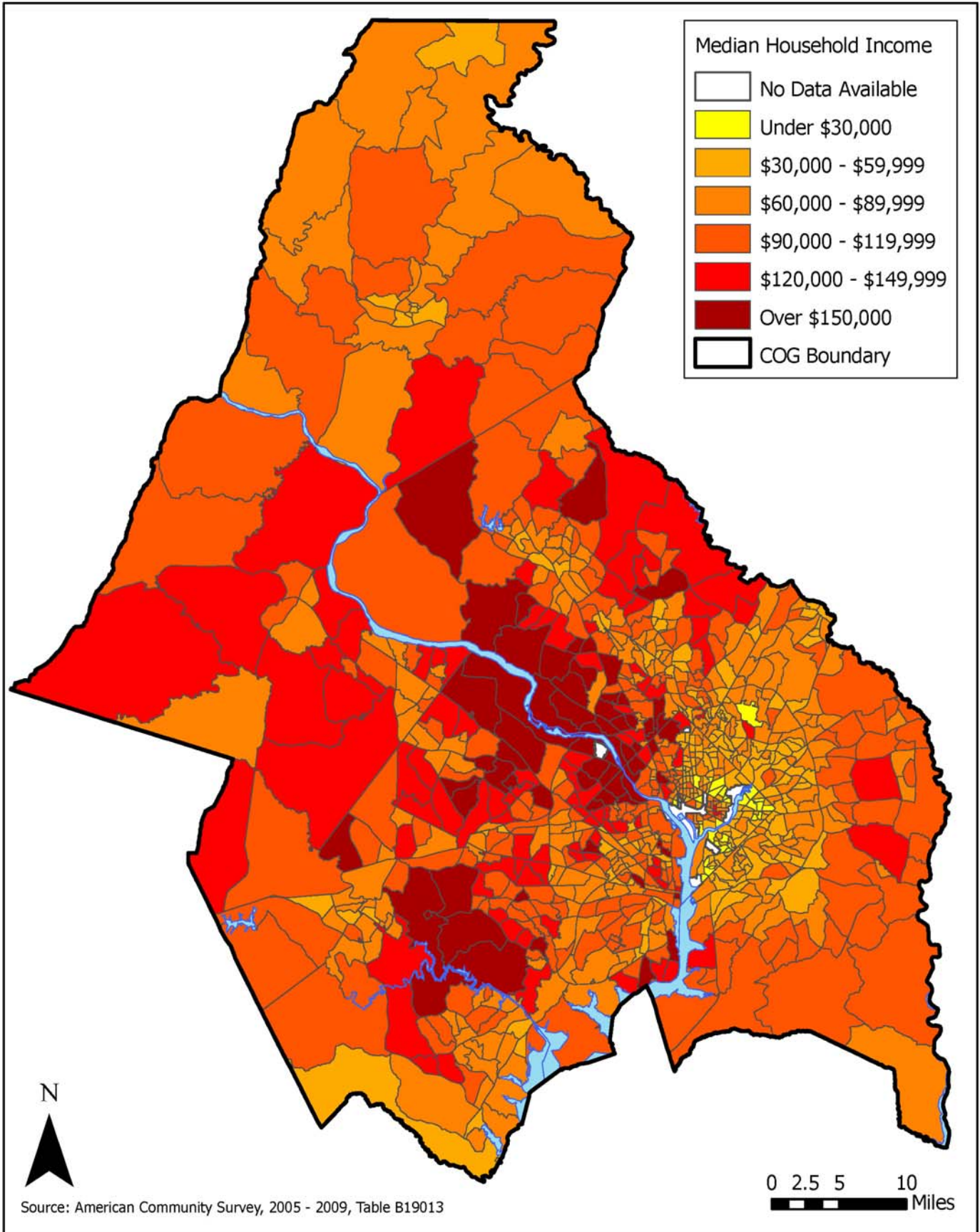
The total population in the COG region is 4,675,232. The most populous jurisdiction is Fairfax County with more than one million people, followed by Montgomery County with more than 809,000 people, and Prince George's County with more than 724,000 people.

Nearly 80 percent of the COG region's residents are native-born. Among foreign-born residents, approximately 9 percent are naturalized citizens, and 13 percent are non-citizens.

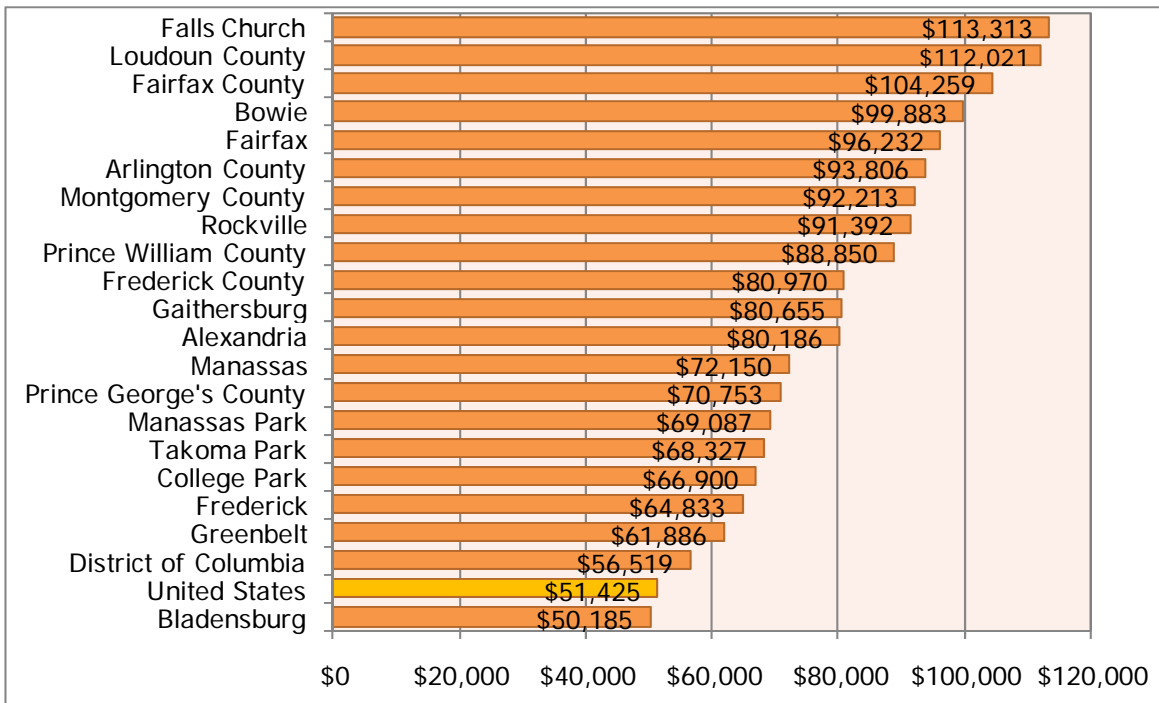
Nativity and Citizenship, 2005—2009



Median Household Income, 2005—2009



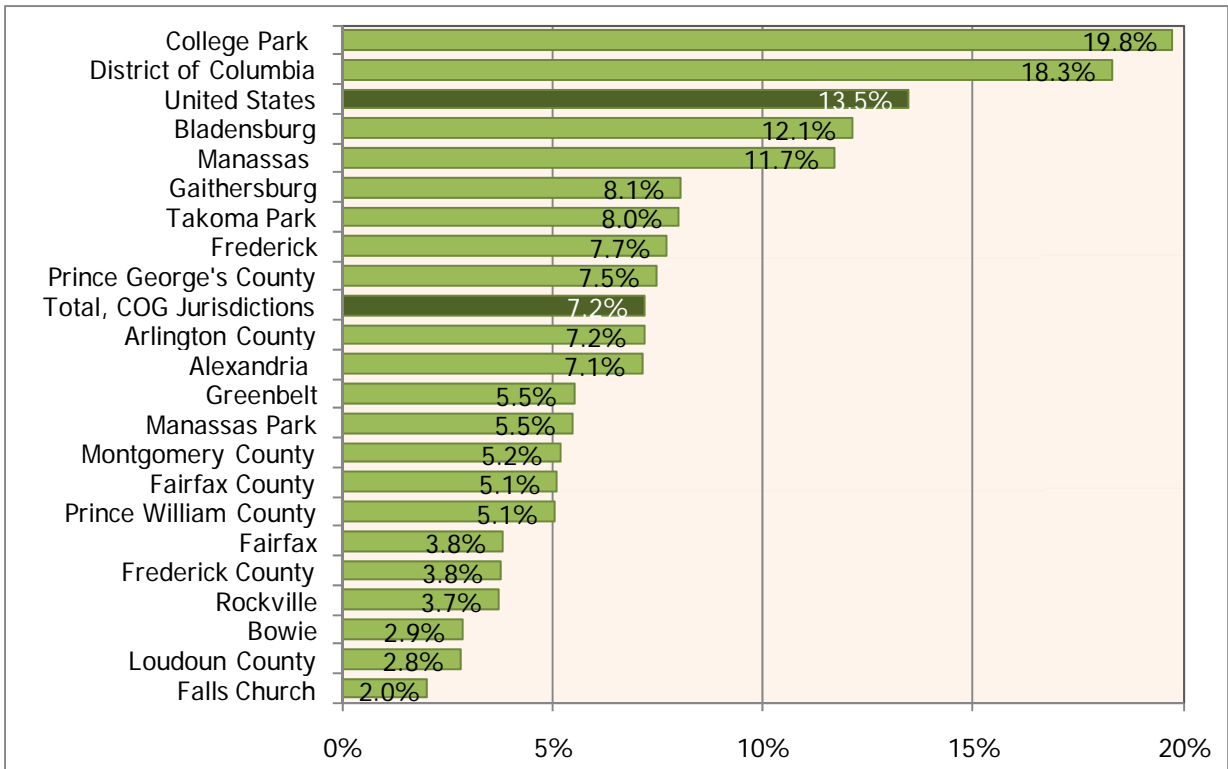
Median Household Income, 2005—2009



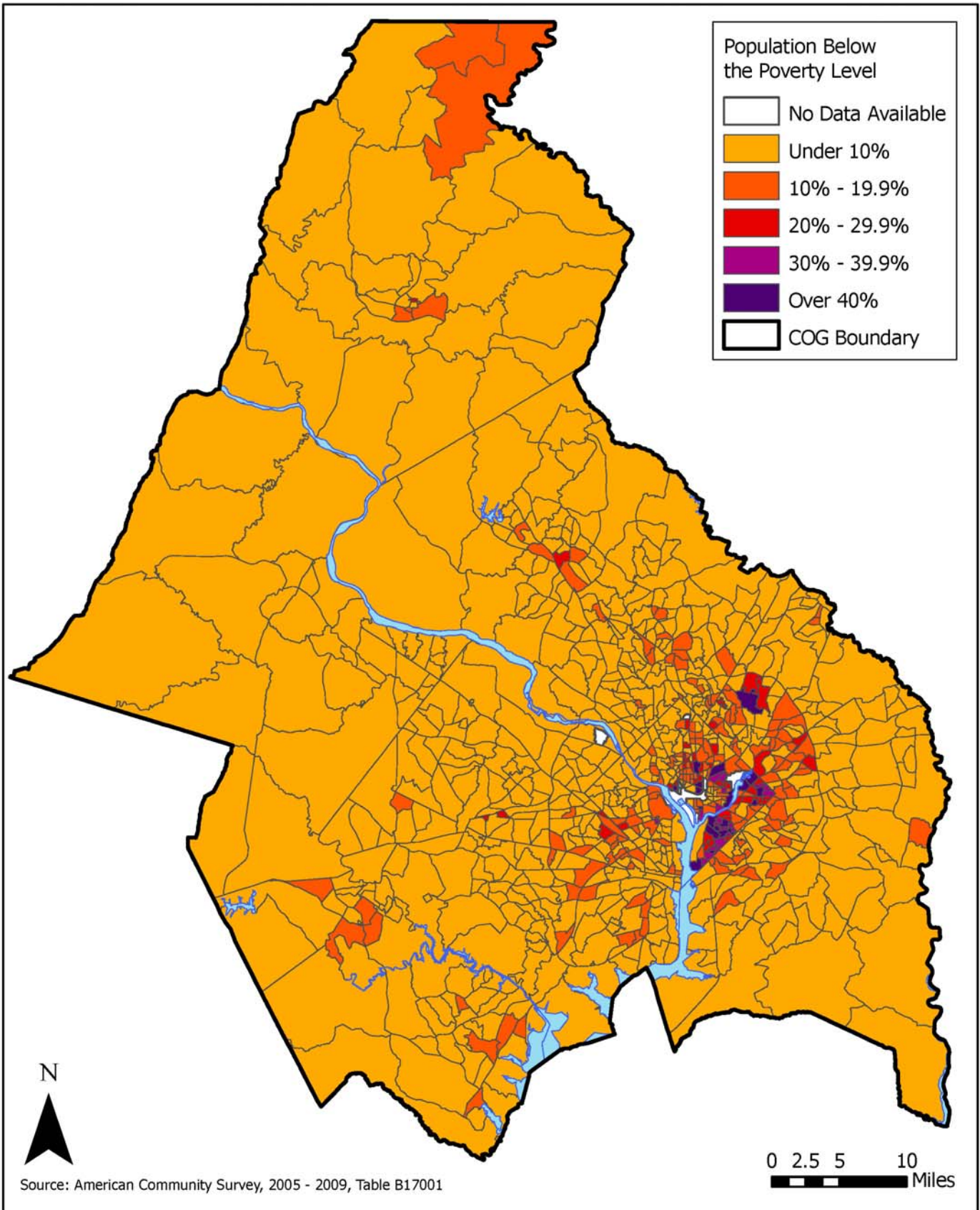
The jurisdictions of the COG region are characterized by relative affluence compared to the median household income of the United States. Three jurisdictions, Falls Church, Loudoun County, and Fairfax County, have median household incomes that exceed \$100,000.

The majority of COG jurisdictions have poverty rates lower than the national averages; however, the District of Columbia and College Park have poverty rates of nearly 20 percent.

Percent of Population Below the Poverty Level in the Past 12 Months, 2005—2009



Percent of Population With Incomes Below the Poverty Level in the Past 12 Months



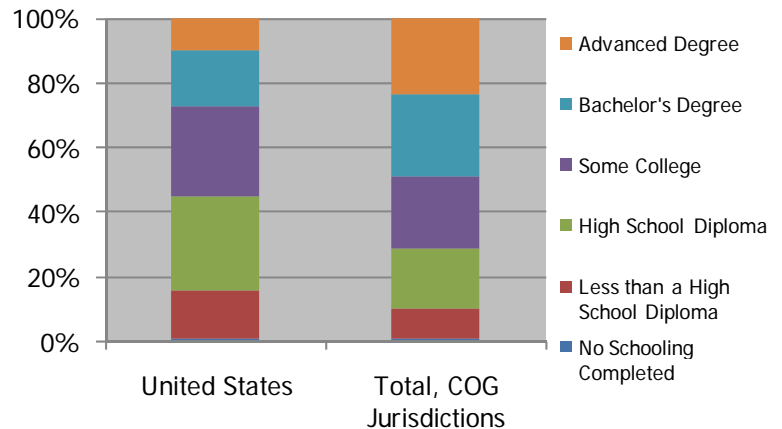
Percent of Renter-Occupied Households with Rents Exceeding 30% of Income, 2005–2009

Jurisdiction	30% or More	40% or More	50% or More
District of Columbia	45.5%	31.8%	23.7%
Frederick County	38.3%	26.1%	16.7%
City of Frederick	43.6%	25.9%	17.0%
Montgomery County	48.0%	30.9%	22.1%
City of Gaithersburg	50.1%	33.9%	22.3%
City of Rockville	42.9%	21.6%	13.4%
City of Takoma Park	41.0%	25.3%	19.4%
Prince George's County	46.0%	29.0%	19.5%
City of Bowie	51.1%	34.0%	27.2%
City of College Park	58.2%	47.4%	41.6%
City of Greenbelt	37.8%	21.3%	13.8%
Town of Bladensburg	43.6%	27.5%	19.1%
City of Alexandria	39.6%	23.3%	16.0%
Arlington County	35.4%	20.9%	13.8%
Fairfax County	42.4%	26.4%	18.1%
City of Fairfax	45.9%	23.8%	18.9%
City of Falls Church	43.9%	27.4%	15.4%
Loudoun County	44.9%	28.3%	18.8%
Prince William County	47.2%	29.6%	19.4%
City of Manassas	56.4%	38.5%	26.2%
City of Manassas Park	53.7%	38.5%	18.6%

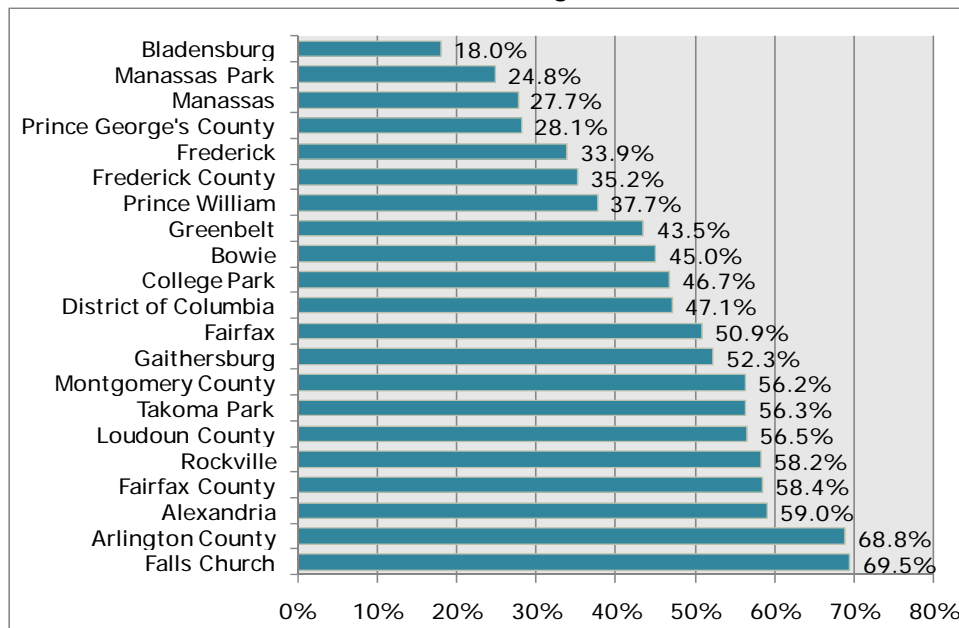
The COG region is marked by a high incidence of cost-burdened renter-occupied households. The standard measure of housing affordability is 30 percent or less of a household's annual income. In a majority of COG jurisdictions, 40 percent or more of renter-occupied households spend more than a third of their gross incomes on rent.

The region is also characterized by high educational attainment. Approximately 50 percent of the population of COG jurisdictions has achieved a Bachelor's or Advanced degree, compared to about 30 percent for the United States as a whole. In Arlington County and Falls Church, nearly 70 percent of the population over 25 Years has a Bachelor's or Advanced degree.

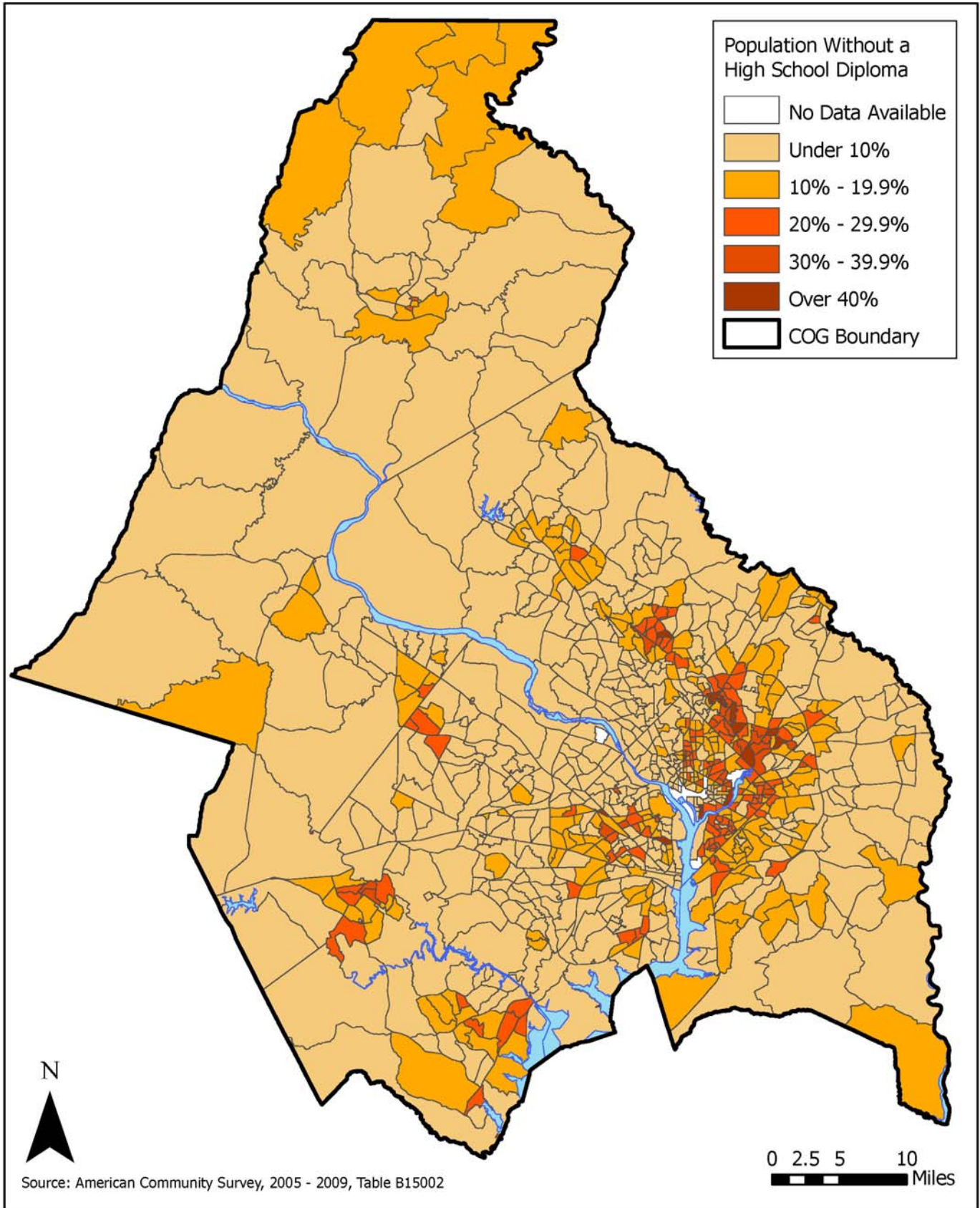
Highest Level of Education Completed, Population 25 Years and Over, 2005–2009



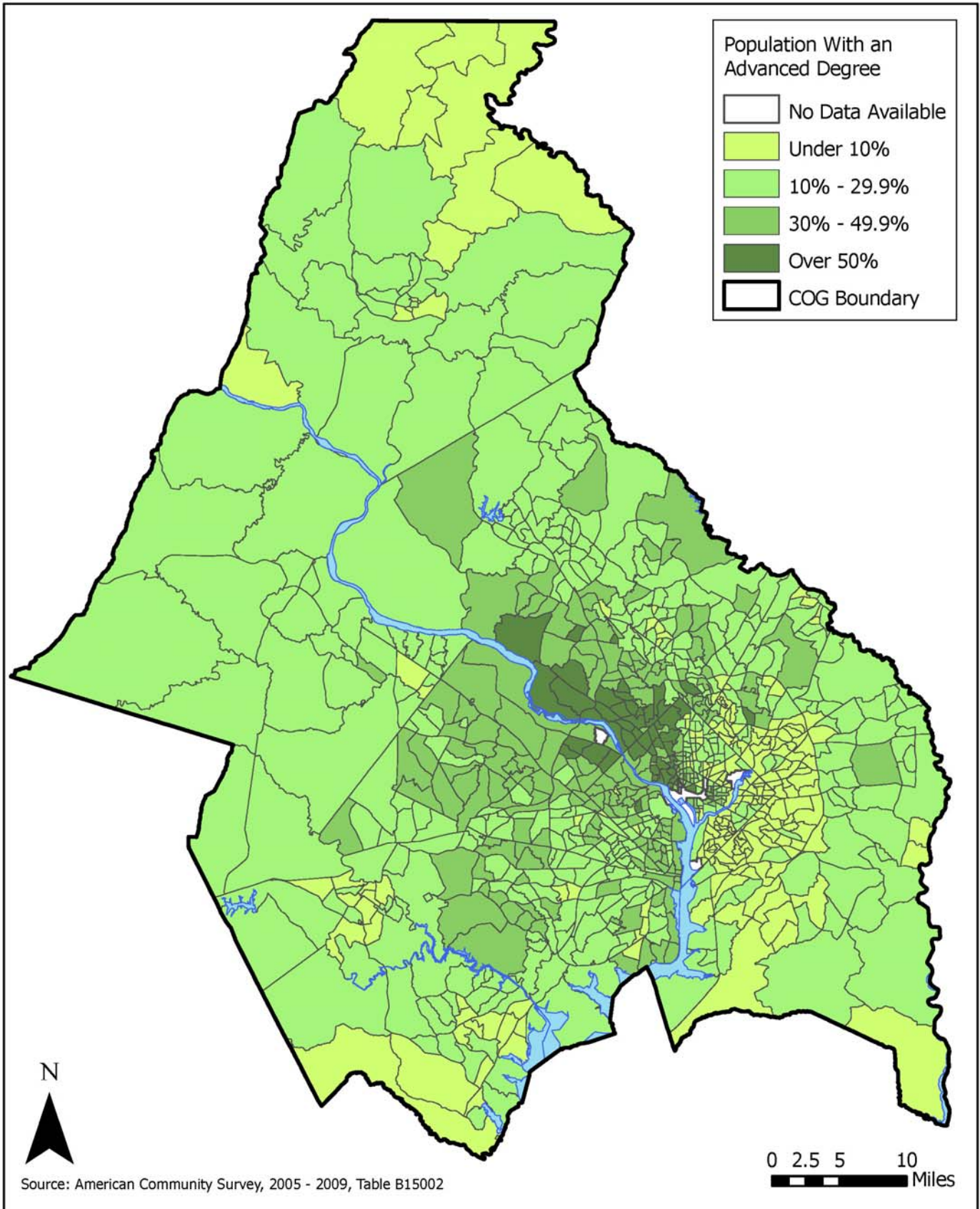
Percent of Population 25 Years and Over with a Bachelor's or Advanced Degree, 2005–2009



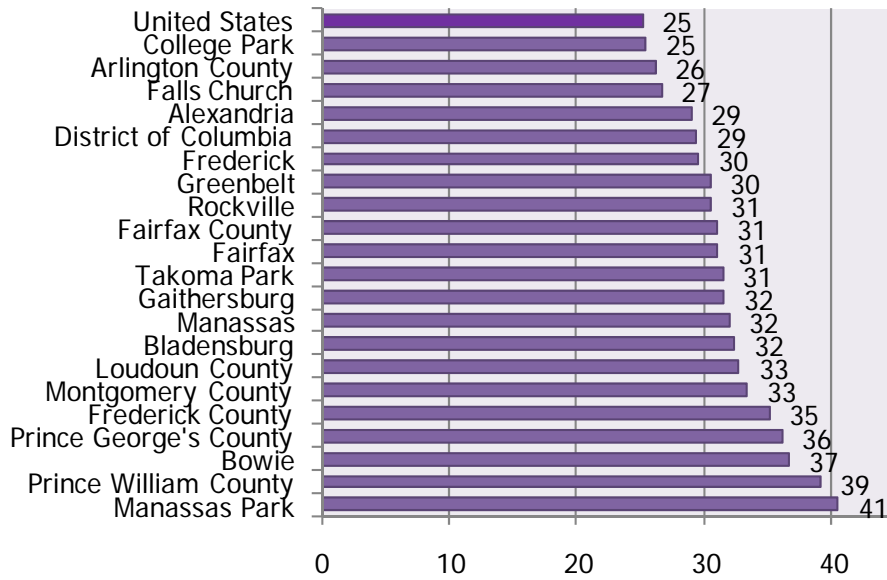
Percent of Population Over 25 Years Without a High School Diploma or G.E.D.



Percent of Population Over 25 Years With a Master's, Professional, or Doctoral Degree



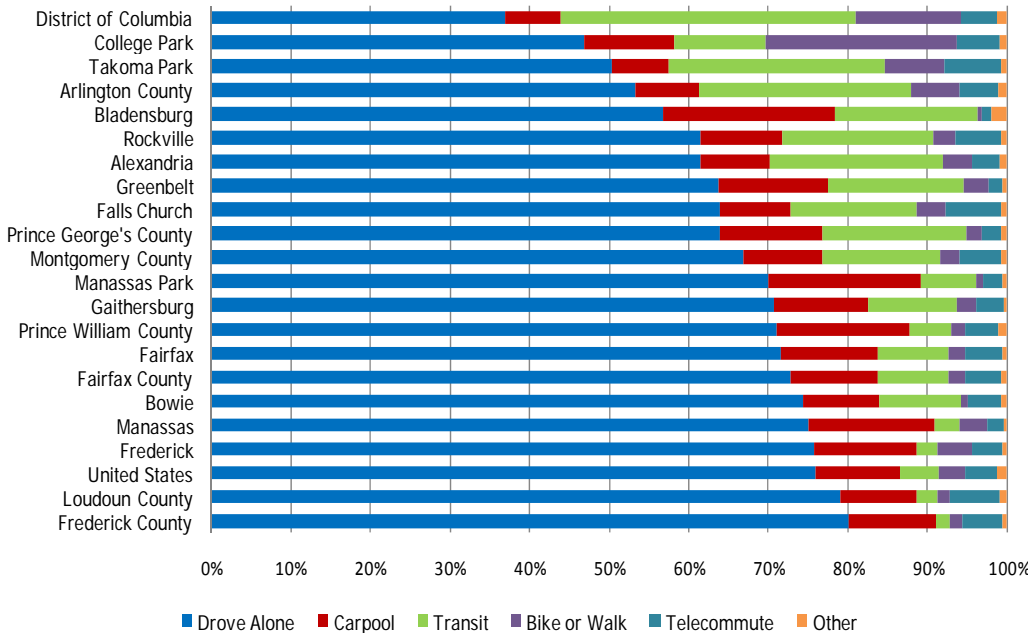
Average Travel Time to Work for Workers Over 16 Years



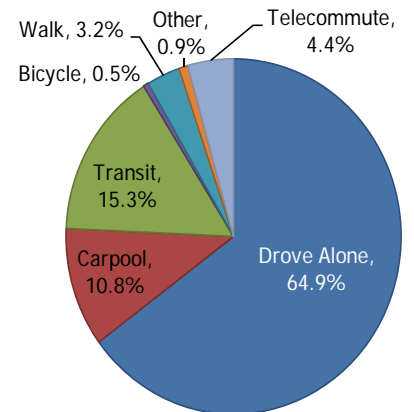
Average travel times to work throughout the region exceed the United States average, and the majority of jurisdictions have average travel times of 30 minutes or more.

Approximately 65 percent of workers in all COG jurisdictions drive alone to work, which is about 10 percent lower than the national rate. Transit and carpooling are the next most common modes, comprising approximately 15 and 11 percent, respectively. There is wide variation in mode split across the jurisdictions. The District of Columbia has the lowest percentage of workers driving alone (37 percent) and has a roughly equal percentage of workers using transit. In jurisdictions with suburban and exurban development patterns, travel mode splits are similar to those at the national level.

Mode of Travel to Work by Jurisdiction, 2005—2009



Mode of Travel to Work, All COG Jurisdictions, 2005—2009



The Metropolitan Washington Council of Governments (COG) develops solutions to issues of regional importance. COG is an independent, nonprofit association comprised of elected officials from 21 local governments, members of the Maryland and Virginia legislatures, and members of the U.S. Congress.

For more information, please visit: www.mwcog.org