



RTCA 2010-2011 Project Highlights

Southeast Coast Saltwater Paddling Trail (Multi-State Project)

The Southeast Coast Saltwater Paddling Trail will identify a "main corridor" for a blueway along the Gulf Coast and Atlantic Coast. The Florida Circumnavigational Saltwater paddling Trail will be the connecting link for each segment of this project. The project will connect with the existing Florida Circumnavigational Saltwater Paddling Trail and another blueway system, the Captain John Smith National Historic Trail on the Chesapeake Bay. A database and a website will be created that combine all the information into one central location.

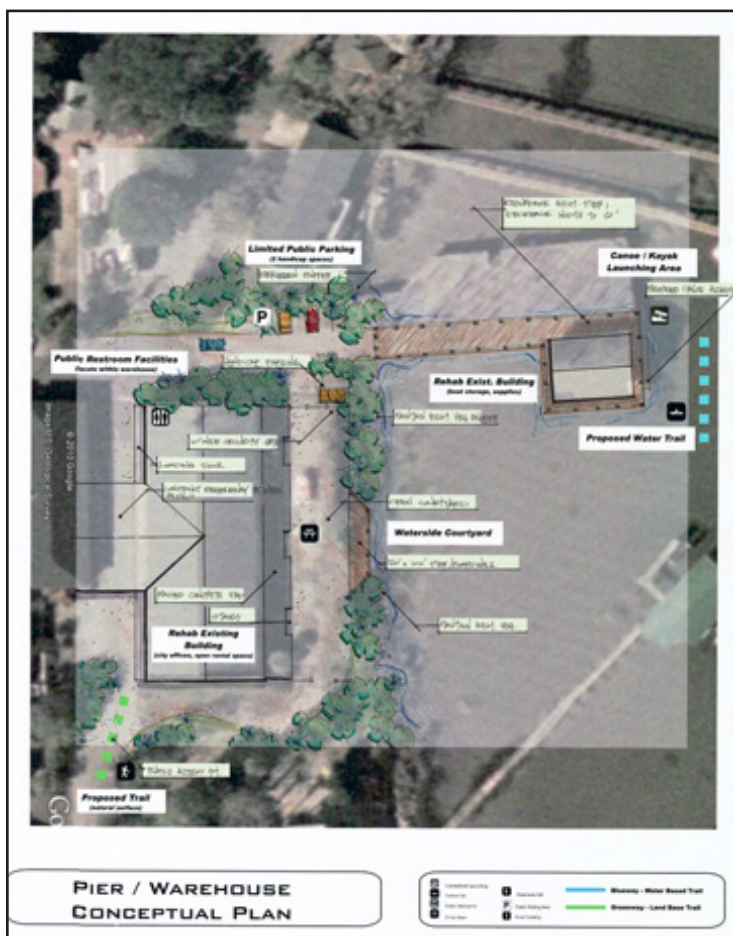
The expected outcome for the first phase of the project is to identify the existing safe, legal, public boat access and campgrounds that connect within each state and between states to provide for day or multi-day paddling trips. The paddling trail will also promote recreation, environmental education and conservation, historic and cultural education, increased tourism and economic development for all adjacent communities.

RTCA project contact: [Charlotte Gillis](#)



2010-2011 RTCA

Fort Sumter Public Access Assistance (South Carolina Project)



Conceptual map design for pier/warehouse renovation
design by Bill Lane



Conceptual map design for handicap/public access
design by Bill Lane

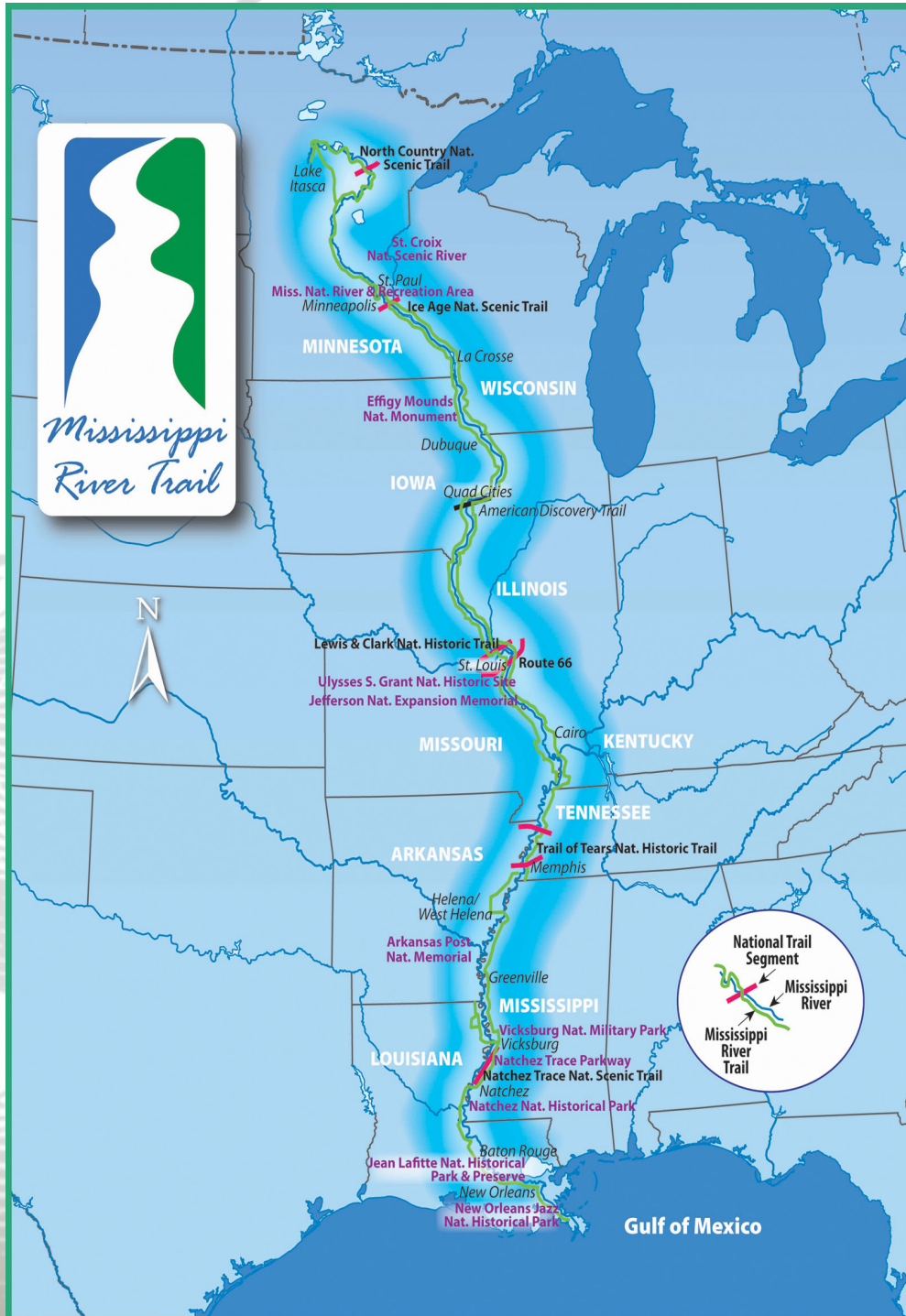
RTCA worked closely with Park Superintendent Bob Dodson to evaluate two sites of strong interest to both the park and Sullivan's Island. The final report focused on the development of two site master plans in order to offer recommendations for future development and historical preservation. The report also included a signage plan, handicap accessibility plan and funding recommendations.

The first site was located along Thompson Avenue, just behind the existing Town Hall. The second site was located adjacent to Fort Moultrie and currently being used as a public access point to the beach.

RTCA project contact: Bill Lane

Project Highlights

Mississippi River Trail (Multi-State Project)



Mississippi River Trail Map

RTCA project contact: Liz Smith-Incer

www.nps.gov/rtca

Mississippi River Trail encompasses ten states – Minnesota, Wisconsin, Iowa, Illinois, Missouri, Kentucky, Tennessee, Arkansas, Mississippi and Louisiana. This project will work to encourage active recreation, education and stewardship of the Mississippi River and the Mississippi River Trail. Also, it will encourage unique cultural, community and public lands assets through the development of an annual work plan, participation in meetings, conference calls, and activities designed to support collaborative work and organizational development of Mississippi River Trail, Inc. RTCA will provide technical assistance in four areas:

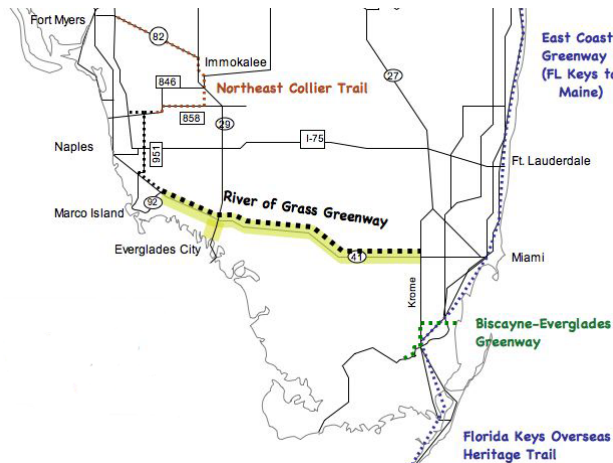
- 1: Outreach to local communities to encourage development of connections and/or improvements to the Mississippi River Trail
- 2: Continued technical assistance in the development of a five-year organization strategic plan, to support MOU objectives and to increase long-term organizational viability.
- 3: Further develop the Mississippi River “blueway” portion of the trail system through community identification of river access points, identification of annual river related recreational events, and continued development of the MRT/Mappler interactive trip planning system.
- 4: Technical support for identification as part of the President’s Great Outdoors Initiative, in adherence to the principles as defined by the President, the Department of the Interior, and the National Park Service.

5: Continued development of a new 70+ mile section of trail linking Vicksburg National Military Park with Natchez National Historical Park.

River of Grass Greenway (Florida State Project)

The River of Grass Greenway (ROGG) is a proposed non-motorized transportation and recreation corridor across the everglades, interconnecting this unique natural resource with the densely populated east and west coasts of southern Florida, which include Collier and Miami Dade Counties.

The ROGG will provide a pathway between the following parks: Everglades National Park, Big Cypress National Preserve, Ten Thousand Islands National Wildlife



Refuge, Fakahatchee Strand Preserve State park, Collier-Seminole State Park, Picayune and Picayune Strand State Forest. RTCA has assisted in grant writing, grant administration and facilitation of this multi-agency and multi-jurisdictional project.

The RTCA Program of NPS was instrumental in obtaining a \$1 million dollar grant for the River of Grass Greenway through the Paul S. Sarbanes Transit Grant in Parks Programming, for the planning and design of the ROGG.

RTCA project contact: Jaime Doubek-Racine

3D Mining Trail (Alabama State Project)

The RTCA program was instrumental in the development of the Red Mountain Park, formerly known as the 3D Mining Trail. Staff were significantly involved in the facilitation of community outreach, particularly educational workshops. Additionally, RTCA assisted in tremendous marketing efforts which included several brochures and outreach fact sheets.

The vision started with an abandoned mining trail located on less than three acres to an envisioned trail, situated on 1, 108 acres, extending approximately 4.5 miles east-to-west along Red Mountain.

The centerpieces of the Park are an extensive, interconnected trail system, its juxtaposition of natural features with historic mining structures and its interpretive exhibits highlighting the mining history of Red Mountain and Birmingham. The park is being developed in phases, as each section will be open as it becomes available for use.

In the park's first phase of opening, visitors will have access to a scenic walking trail that runs in a 10-mile loop around the base of Red Mountain.



Artist conceptual rendition of Red Mountain Park and 3D Mining Trail



Map showing 3D Mining Trail extension

RTCA project contact: Stacy Palmer