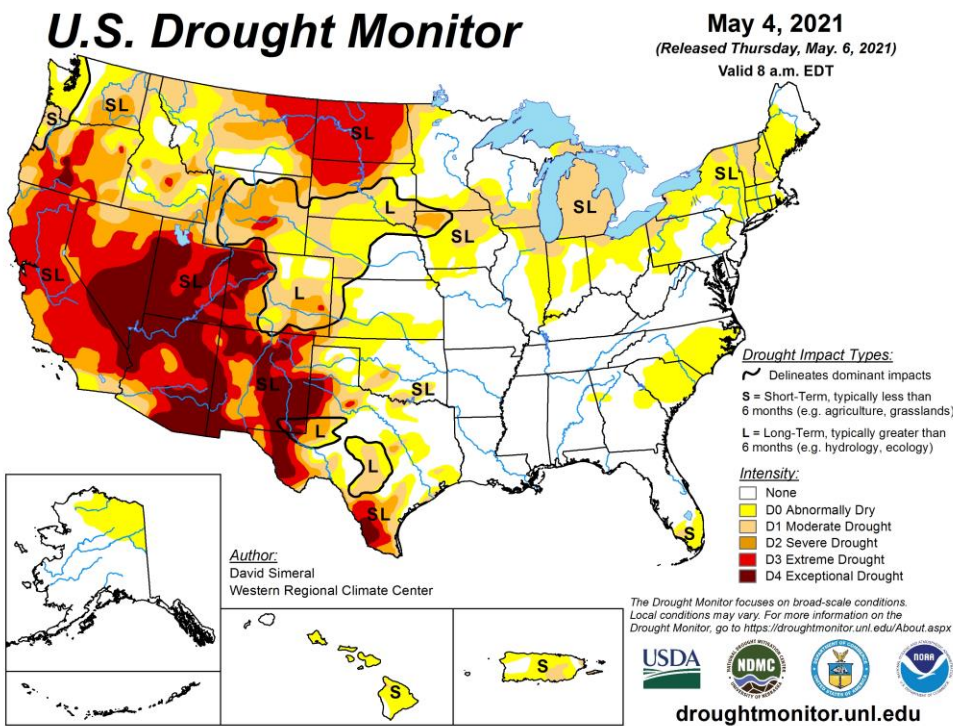


Regional Drought and Water Supply Status May 2021



SUMMARY OF CURRENT CONDITIONS (as of May 6, 2021) – NORMAL

The latest U.S. Drought monitor released on May 6 indicates that the COG region is currently free of drought. Potomac streamflows are near median levels, and local reservoirs are full. Most of the regional groundwater wells monitored are at normal levels. Long-term forecasts indicate that we should remain drought free over the next three months.

- Drought Stage - Normal
 - The current drought stage as defined in [COG's water supply and drought response awareness plan \(the Plan\)](#) is Normal. COG's Plan focuses on tracking and responding to drought conditions as it relates to regional water supply.
- Drought Stages from VADEQ and MDE - Normal
 - COG jurisdictions that are monitored by the Virginia Department of Environmental Quality ([VADEQ](#)) and Maryland Department of the Environment ([MDE](#)) are under a normal status.
- Streamflow, reservoir, and groundwater levels – Normal
 - Potomac streamflows are near median levels and local reservoirs are full. Most of the regional groundwater wells monitored are at normal levels.
- Forecasts and Precipitation – Normal
 - The latest U.S. Seasonal Outlook indicates that drought is not likely in the COG region over the next three months. The Potomac River Basin received near normal amounts of precipitation over the past 30 days, and the 7-day forecast calls for roughly 0.75 inches of rain in the COG region.

POTOMAC STREAMFLOW LEVELS

Potomac streamflows are near median levels.

Instantaneous flows readings on May 6 were:
Little Falls –10,800 cfs (median, 12,000 cfs)
Point of Rocks –11,700 cfs (median, 8,610 cfs)

Source: USGS Little Falls: <https://waterdata.usgs.gov/md/nwis/uv?01646500>

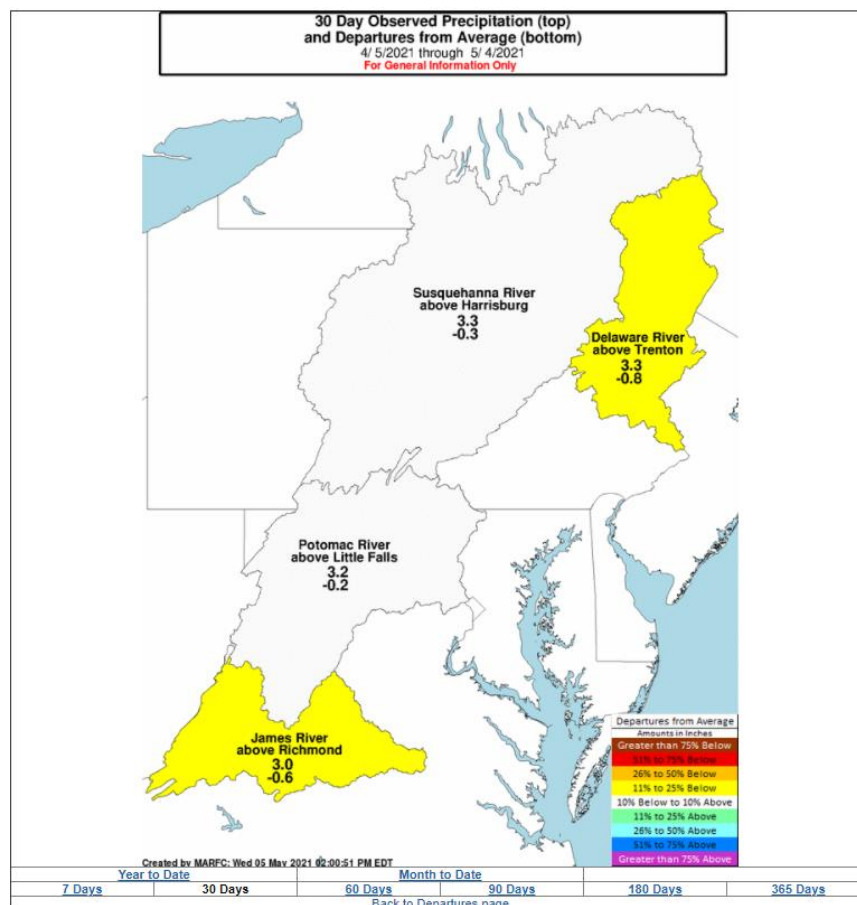
Source: USGS Point of Rocks: <https://waterdata.usgs.gov/md/nwis/uv?01638500>

POTOMAC BASIN PRECIPITATION (as of 5/4/21)

The Potomac Basin received 3.2 inches of rain in the last 30 days, which is 10% below to 10% above average.

Source: Middle Atlantic River Forecast Center

<https://www.weather.gov/marfc/BasinPrecipitation30Day>



GROUNDWATER LEVELS

Most of the groundwater levels are normal in the COG region. Source: USGS

<https://groundwaterwatch.usgs.gov/statemap.asp?sc=51&sa=VA>

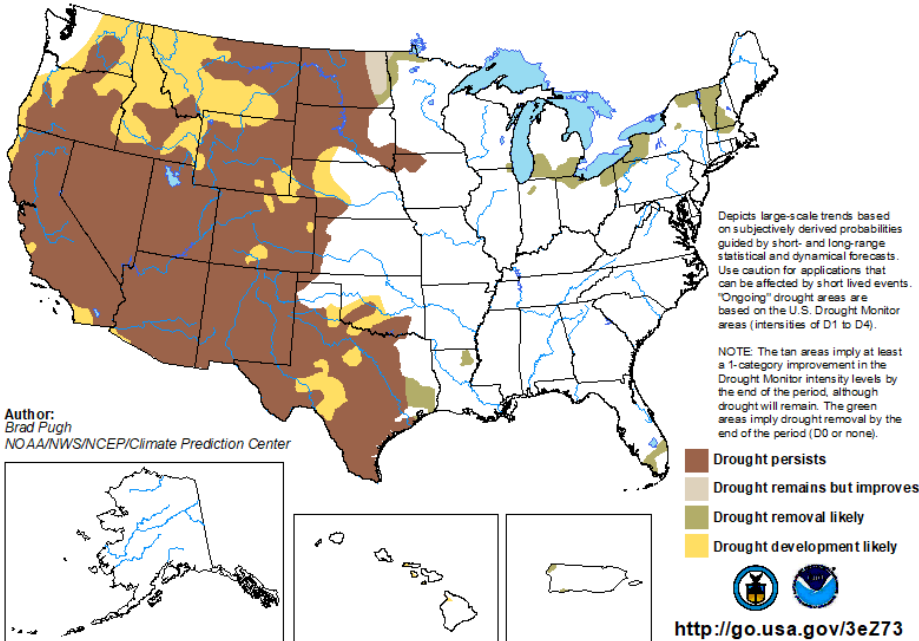
<https://waterdata.usgs.gov/md/nwis/current/?type=gw>

DROUGHT OUTLOOK

The latest U.S. Seasonal Outlook indicates that drought is not expected in the COG region over the next three months. Source: http://www.cpc.ncep.noaa.gov/products/expert_assessment/sdo_summary.php

U.S. Seasonal Drought Outlook Drought Tendency During the Valid Period

Valid for April 15 - July 31, 2021
Released April 15



RESERVOIR LEVELS

Drinking water reservoirs at Jennings Randolph and Little Seneca are full.

Source: <http://www.nab-wc.usace.army.mil/nab/potopub.html>

As of the May 2021 report, there is a below normal probability of releases from the Washington metropolitan area's back-up water supply reservoirs for the 2021 summer and fall seasons. Generally, the use of Jennings Randolph and Little Seneca reservoirs is triggered by low flows brought about by a combination of low precipitation and low groundwater levels. There is a 6 to 14 percent conditional probability that natural Potomac flow will drop below 600 to 700 million gallons per day (MGD) at Little Falls through December 31 of this year.

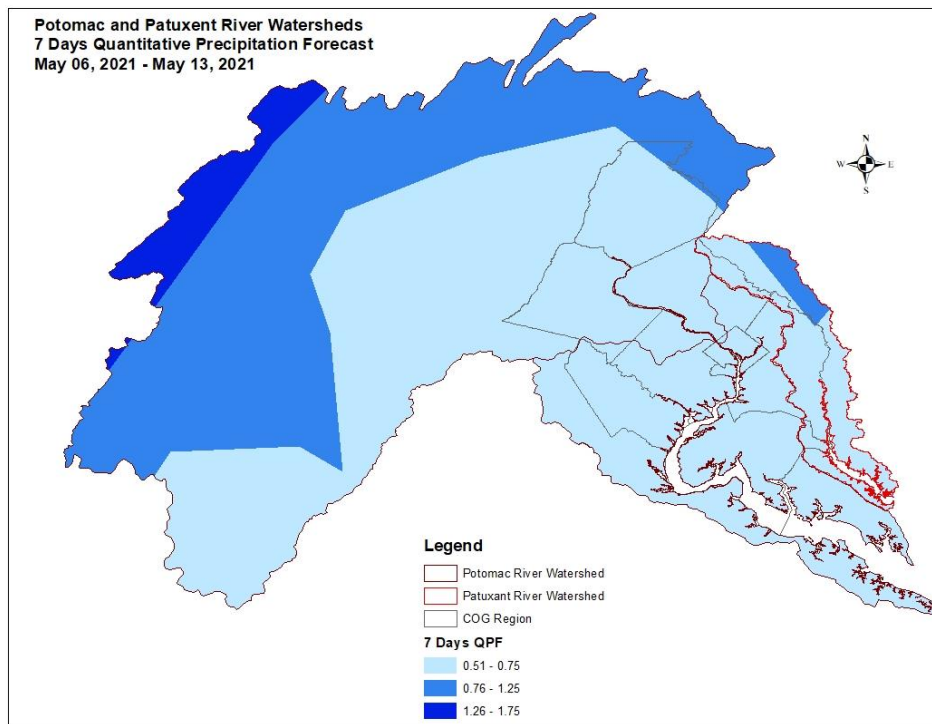
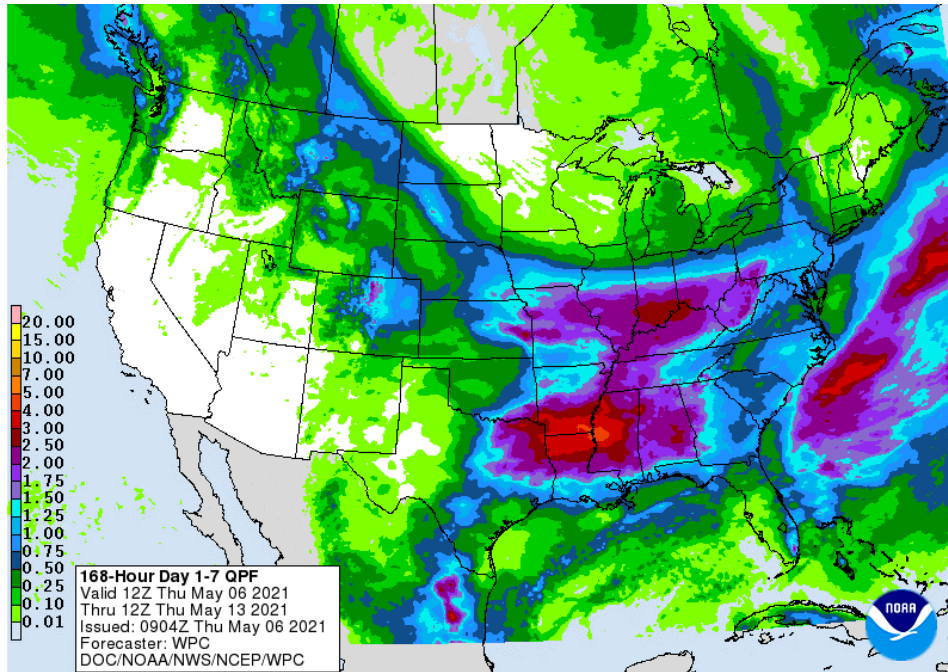
Source: ICPRB

<https://www.potomacriver.org/focus-areas/water-resources-and-drinking-water/cooperative-water-supply-operations-on-the-potomac/drought-monitoring-and-operations/water-supply-outlook-status/>

7 DAY PRECIPITATION FORECASTS

The 7 Day quantitative precipitation forecast calls for roughly 0.75 inches of rain.

Source: NOAA and COG: <http://www.wpc.ncep.noaa.gov/qpf/day1-7.shtml>



For additional information please visit COG's Water Supply and Drought website:

<https://www.mwcog.org/drought>