

**Preliminary Regional Transportation
Data Clearinghouse
Web Viewer**

Cooperative Forecasting and
Data Subcommittee Meeting
Tuesday, April 10, 2012

Regional Transportation Data Clearinghouse

Overview

- Provides member jurisdictions and planners with a GIS-based tool to access and analyze transportation data in the COG/TPB region.
- Available to any authorized user through any web-browser (Flex-based, so not compatible with iOS)

Regional Transportation Data Clearinghouse

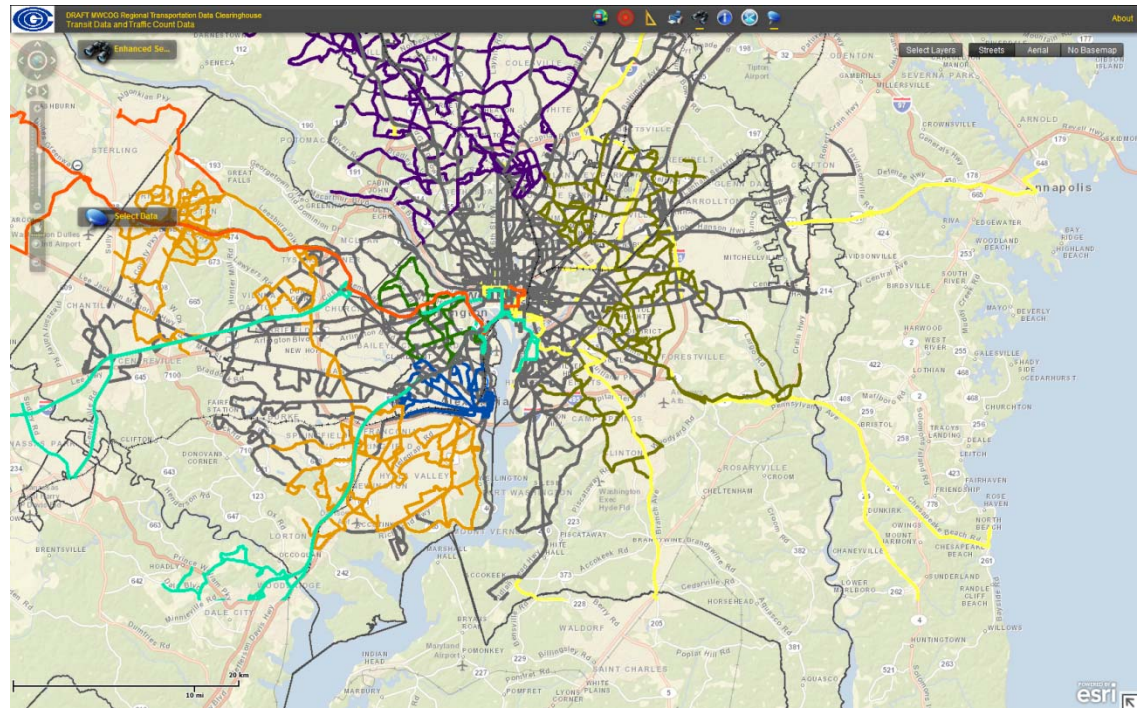
Available Data

- Hourly Traffic Counts (Permanent and Coverage Counts)
- Traffic Counts (AADT/AAWT)
- Transit Ridership (Avg. Weekday Ridership by Line)
- Metrorail (Entry and Exits by Station)
- TAZs with Cooperative Forecasting Data
- Activity Centers and Clusters
- Regional Boundaries

Regional Transportation Data Clearinghouse

Tools (Widgets)

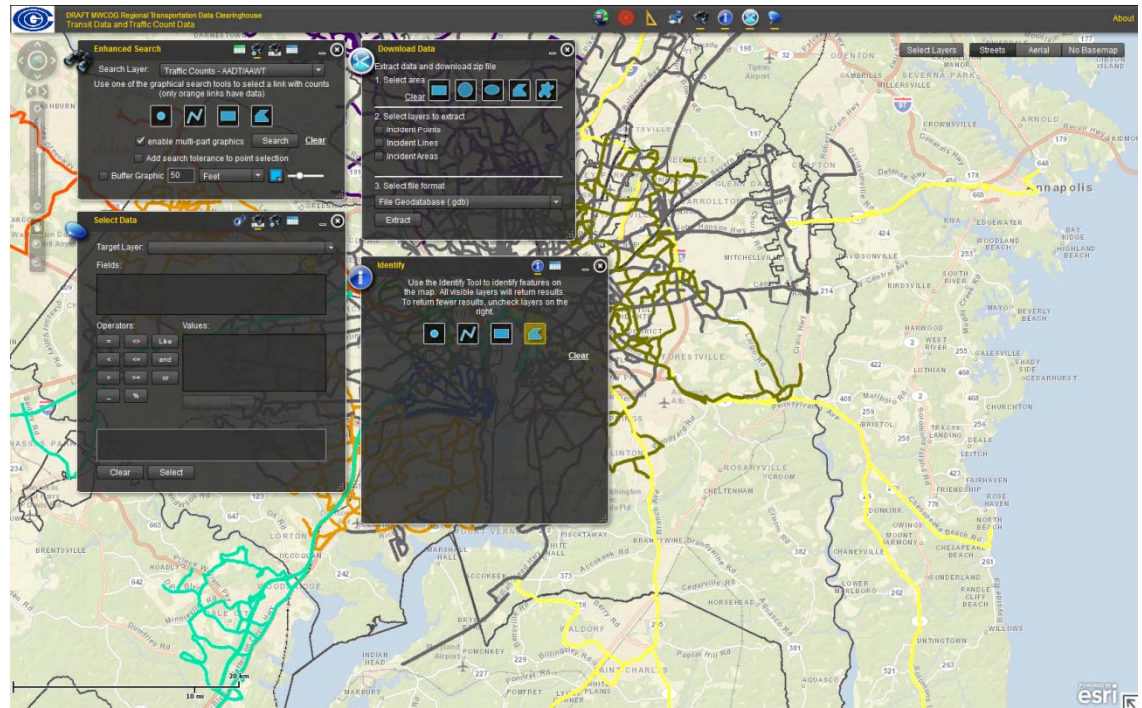
- Search (Text and Graphical)
- Identify
- Select data by using query
- Extract and download data



Regional Transportation Data Clearinghouse

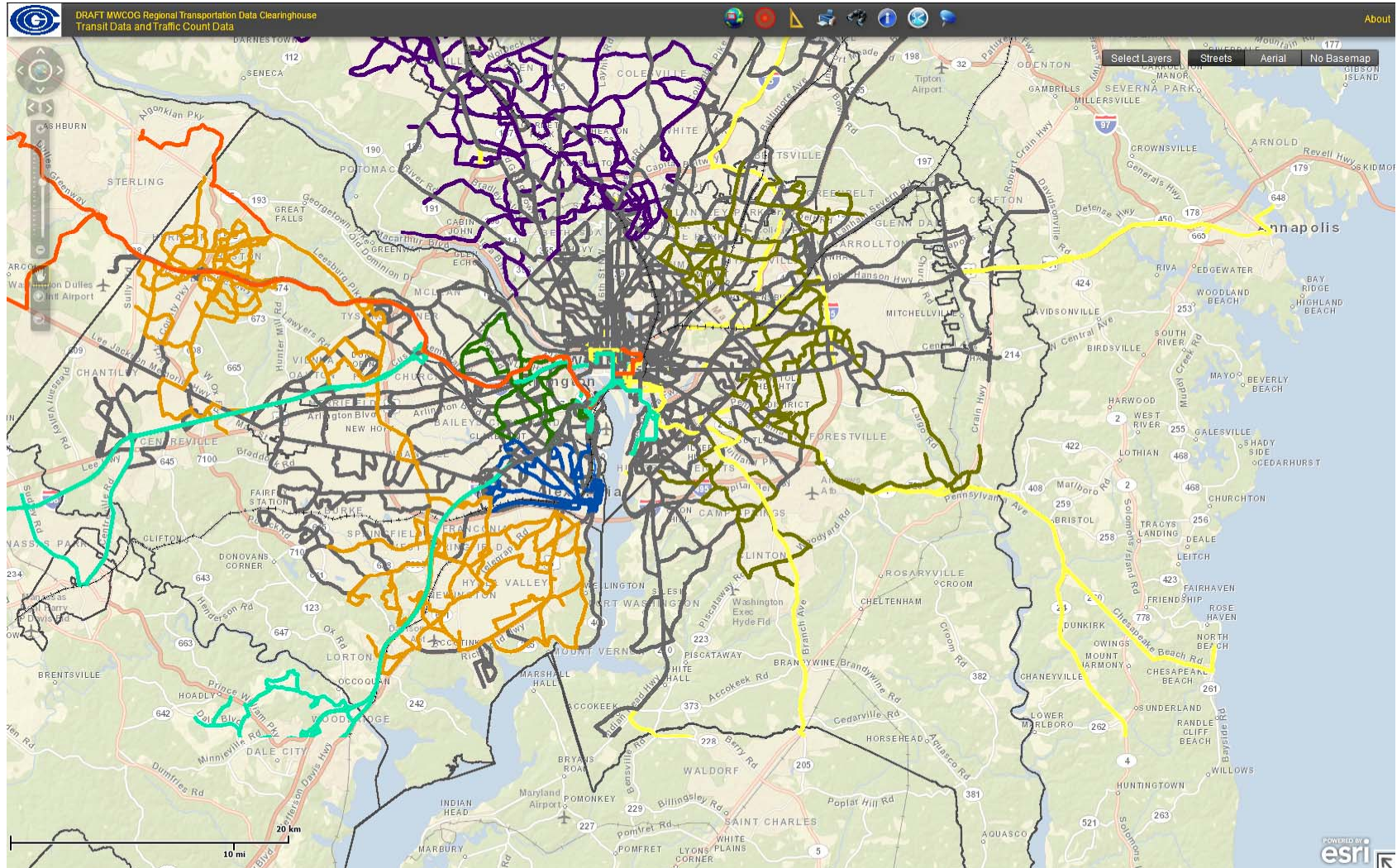
Tools (Widgets)

- Search (Text and Graphical)
- Identify
- Select data by using query
- Extract and download data



Regional Transportation Data Clearinghouse

Demonstration



Regional Transportation Data Clearinghouse

Please contact Charlie Grier for
comments or suggestions:

cgrier@mwkog.org

202-962-3341

(through June 2012)