

OPTIMIZING LAND USE NEAR HIGH-CAPACITY TRANSIT

Achieving Multi-Sectoral Goals via Transit-Oriented Communities

Kanti Srikanth
COG Deputy Executive Director for Metropolitan Planning

COG Board of Directors
September 8, 2021

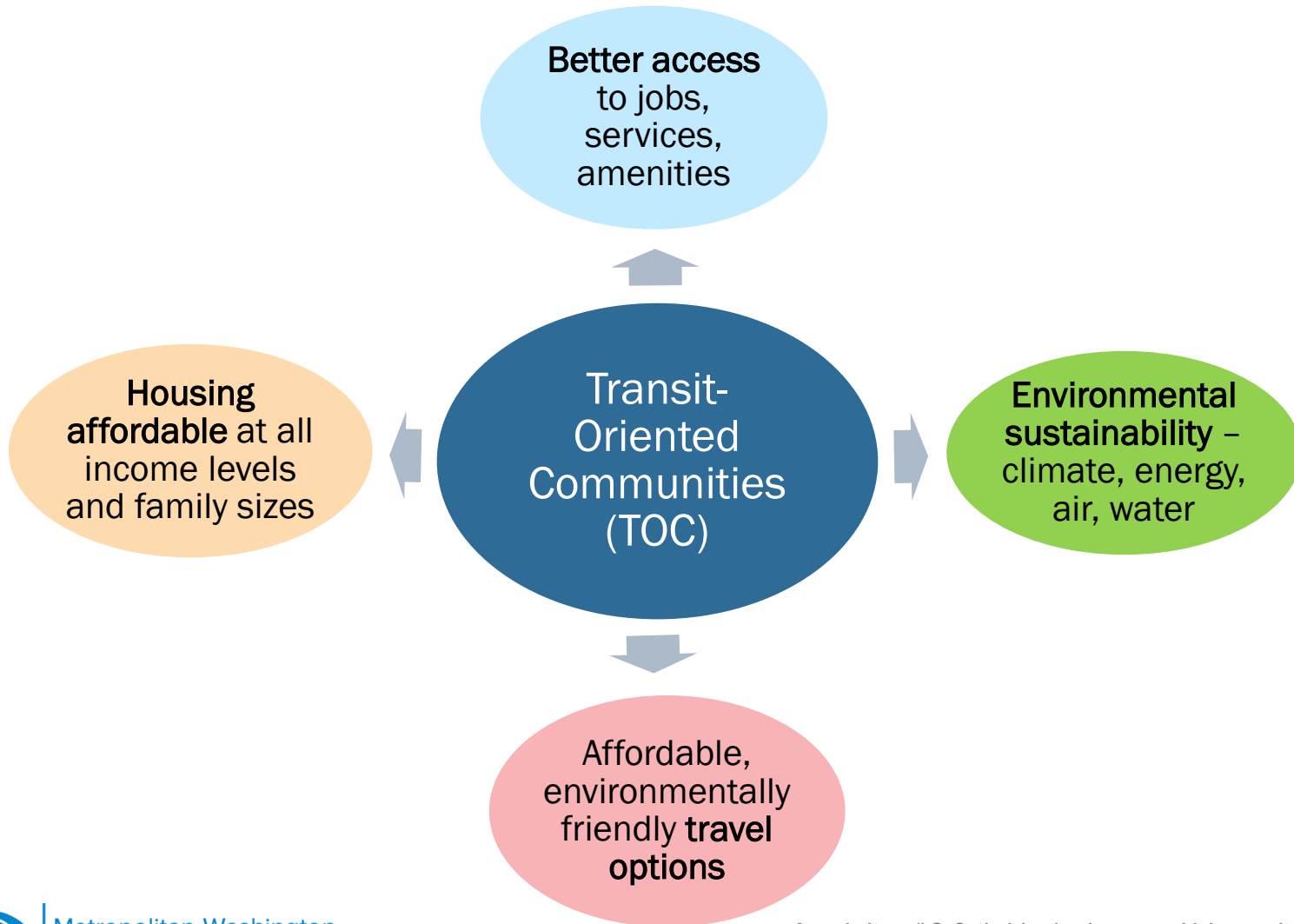


Region's Multi-Sector Goals

- Housing Goals
 - 320,000 by 2030
 - 75% located near High-Capacity Transit and Regional Activity Centers
 - 75% affordable to low and middle-income households
- Transportation Goals
 - Affordable transportation options for all trip purposes
 - Accessibility to jobs, services, and amenities
 - Protects natural environment and is sustainable
- Environmental Goals
 - Meet or exceed federal air quality standards
 - Reduce greenhouse gases and be a Climate Resilient Region



Synergies of Varied Actions



High-Capacity Transit (HCT) Station Areas

- Metro and Commuter Rail
- Light Rail, Streetcar
- Bus Rapid Transit

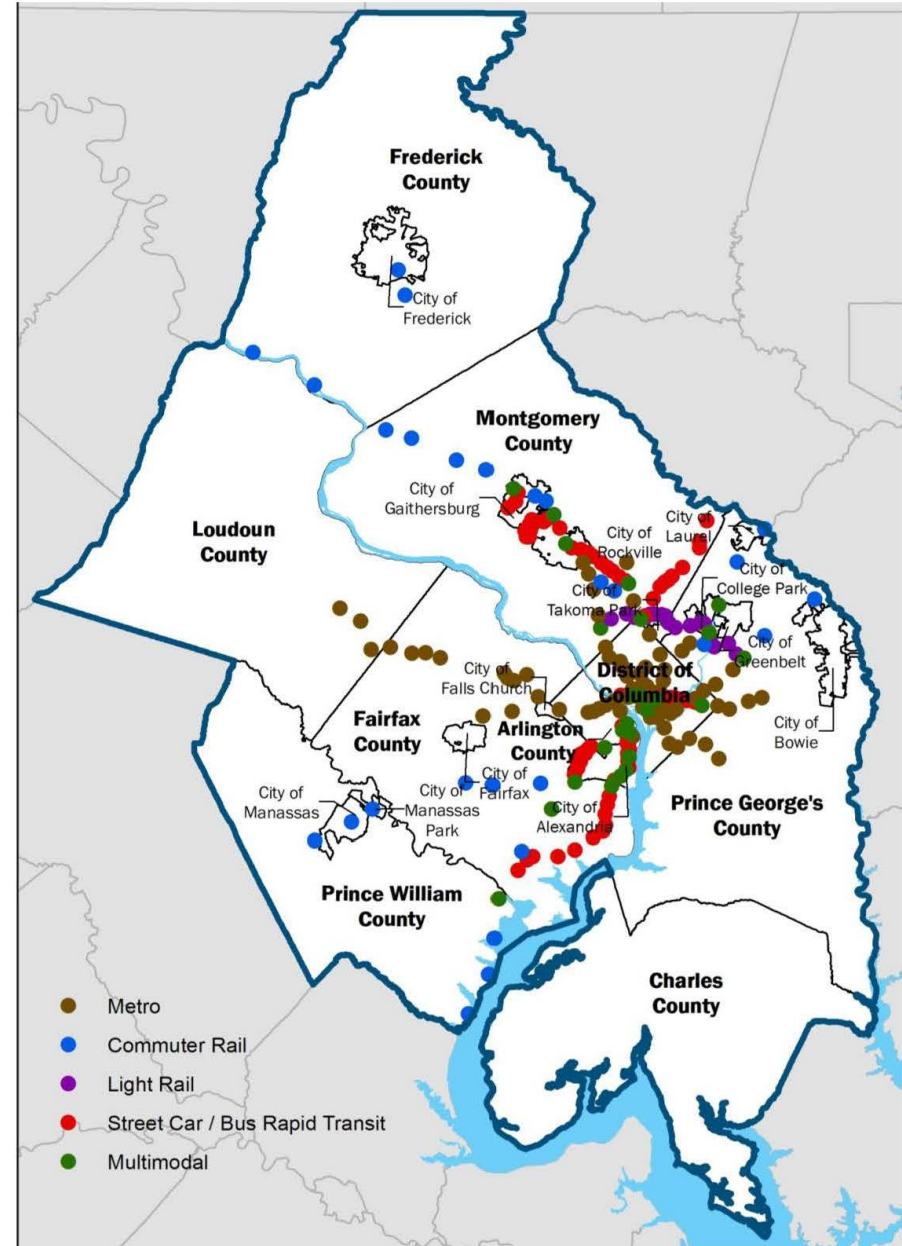
HCT Station Areas = 10% land area

- 55% of new job growth
- 225 by 2030
- 150 Existing / 75 Planned

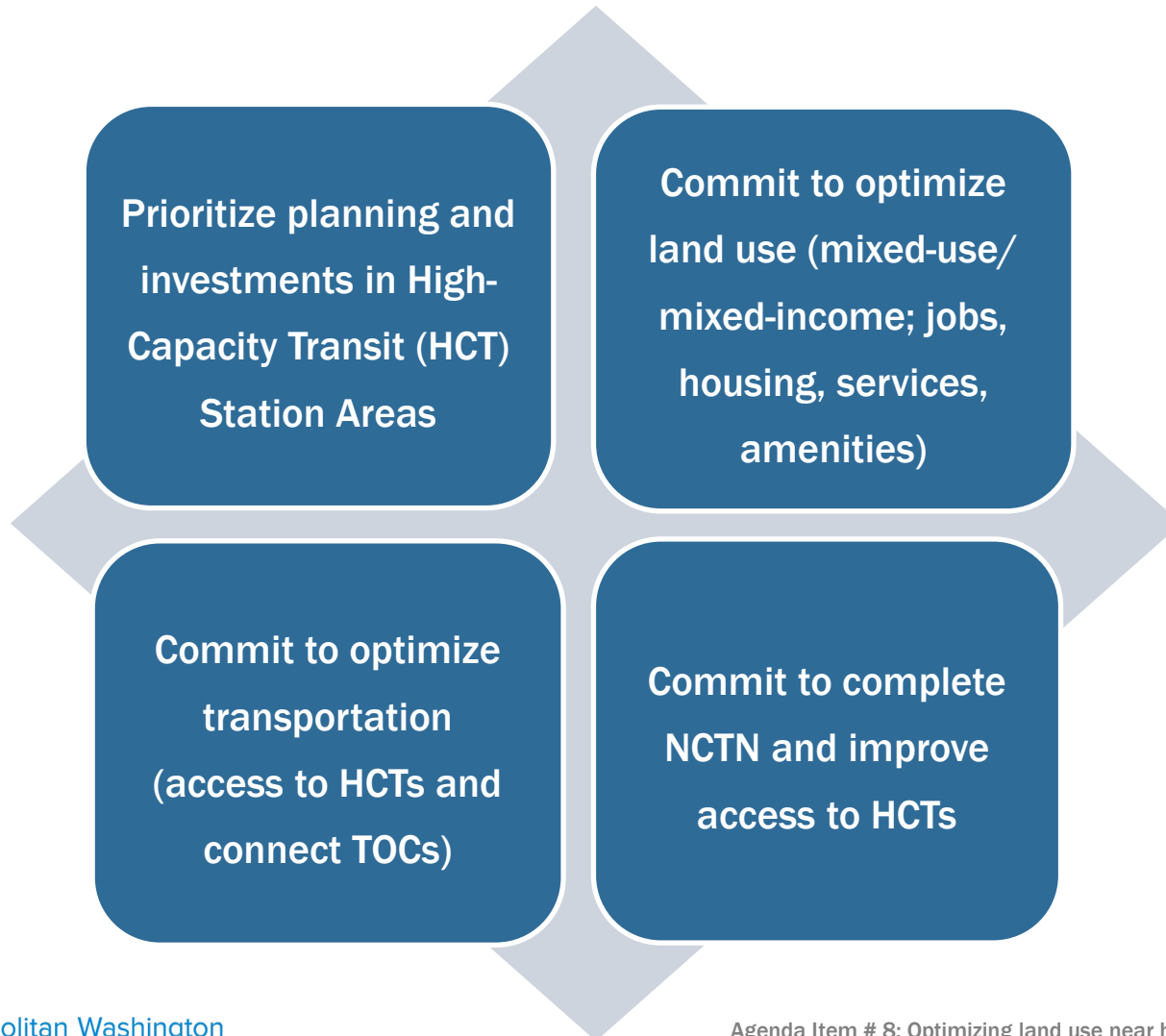
Overlapping planning constructs

- 203 in an Activity Center
- 168 within ½ mile of an Equity Emphasis Area
- 180 within ½ mile of National Capital Trail Network

High-Capacity Transit Station Areas – Existing and Planned for 2030



Optimizing HCTs to create TOCs



Kanti Srikanth

COG Deputy Executive Director for Metropolitan Planning

(202) 962-3257

ksrikanth@mwcog.org

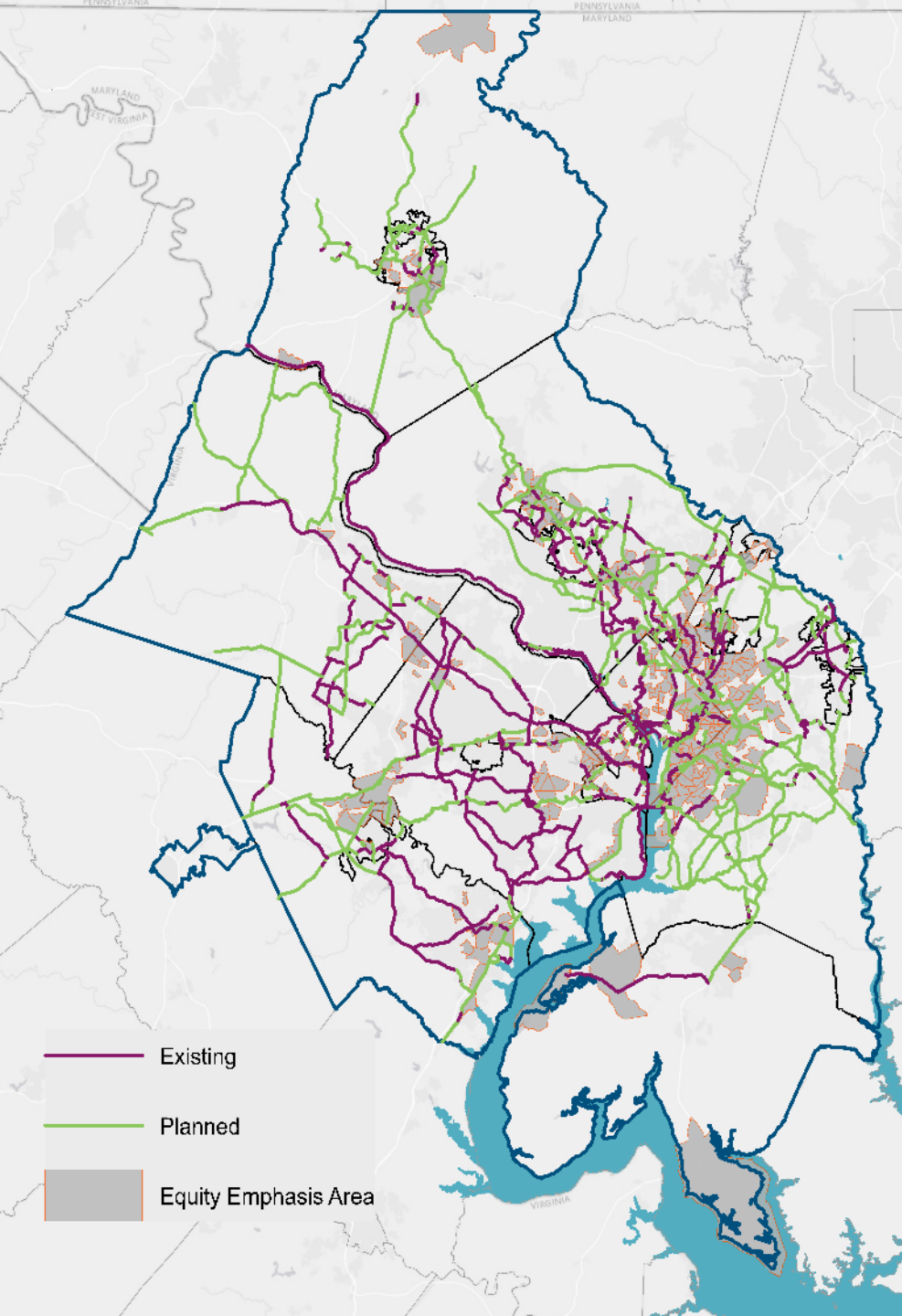
mwcog.org

777 North Capitol Street NE, Suite 300

Washington, DC 20002



Metropolitan Washington
Council of Governments



National Capital Trail Network (NCTN)

- Long-distance, off-street trails accessible for people of all ages and abilities and suitable for both transportation and recreation
- 180 of the 225 HCTs are within half a mile.
- 308 of 350 EEAs are within half a mile.
- 55% of the network is unbuilt.

TOCs & Region Forward Vision

- Transit-oriented communities (TOCs) are an effective strategy for advancing Region Forward.
 - Focus growth in areas best positioned to accommodate new people and jobs.
 - Leverage major investments in transit.
 - Potential for multiple co-benefits related to prosperity, accessibility, livability, and sustainability.

