

## Economic Trends and Commercial Construction Indicators for Metropolitan Washington

COG Board of Directors  
July 9, 2008



Department of Community Planning & Services

1

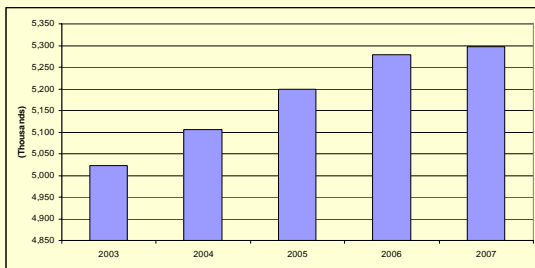
## Economic Trends in Metropolitan Washington 2003 – 2007



- Population
- Employment
- Labor Force
- Construction
- Mortgage Rates, Home Sales, and Housing-Related Inflation
- Inflation
- Income
- Retail Sales
- Airline Passengers

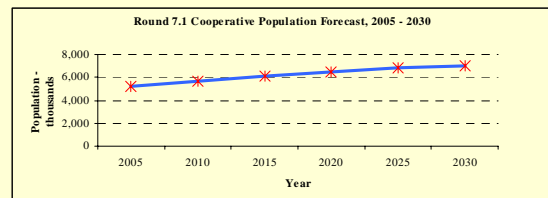
2

### Economic Trends 2003 – 2007 Population Change in the Washington Region



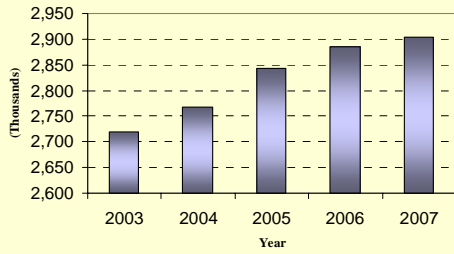
3

### Economic Trends 2003 – 2007 Forecast 2005 to 2030 Population Growth



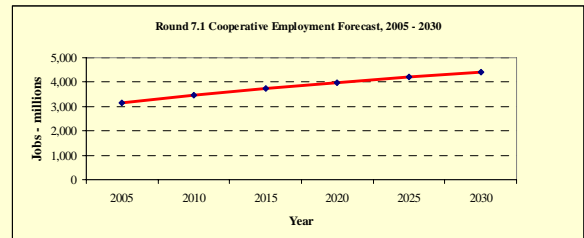
4

### Economic Trends 2003 – 2007 At-Place Employment in the Washington Region



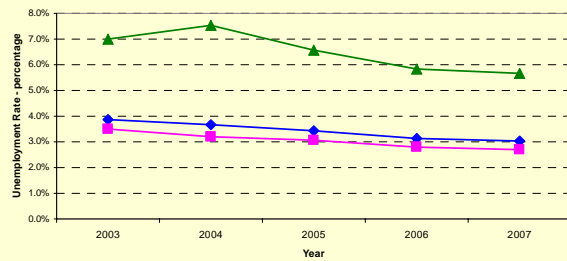
5

### Economic Trends 2003 – 2007 Forecast 2005 to 2030 Job Growth



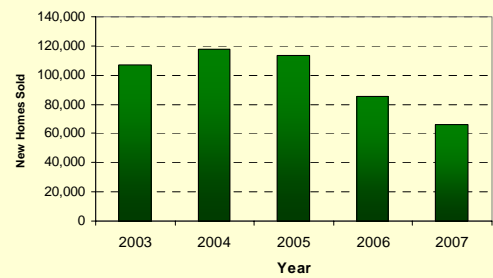
6

### Economic Trends 2003 – 2007 Annual Unemployment Rate



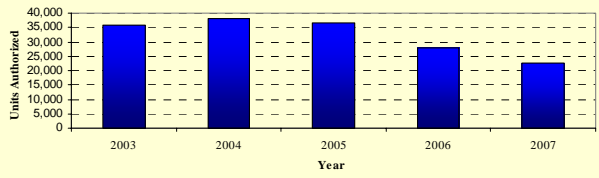
— Washington-Arlington-Alexandria DC-MD-VA-WV MSA    — Suburban Jurisdictions a/    — District of Columbia

### Economic Trends 2003 - 2007 Net Home Sales in the Washington Region



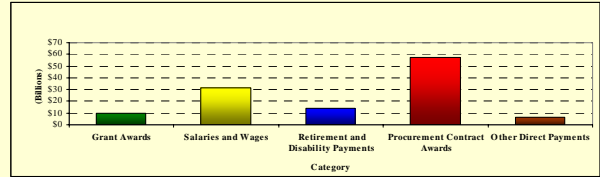
8

### Economic Trends 2003 - 2007 Housing Units Authorized in the Washington Region



9

### Economic Trends 2003 - 2007 Federal Expenditures by Category, FY06



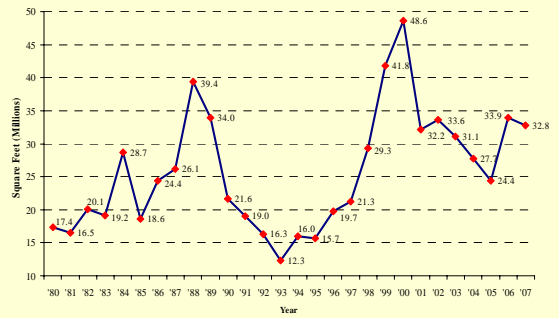
10

### Commercial Construction Indicators 2007

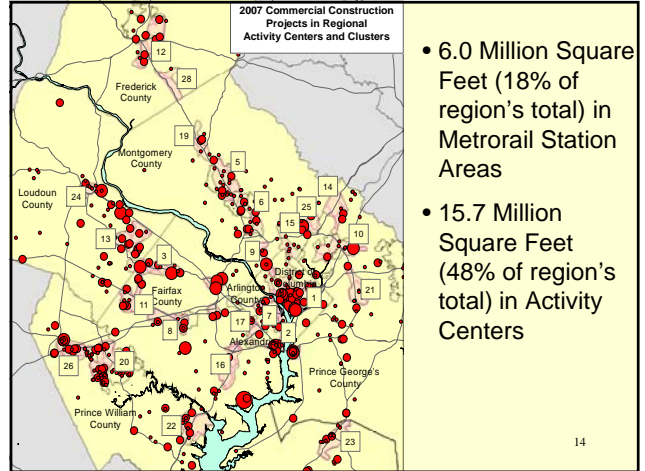
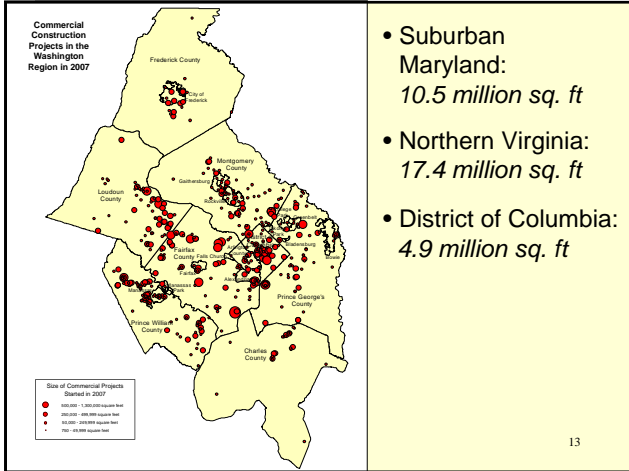
- 473 Projects
- 32.8 Million Square Feet
- \$5.7 Billion Estimated Value

11

### Commercial Construction Starts 1980 to 2007 Total Square Feet



12



**Economic Trends in Metropolitan Washington 2003 to 2007**

---

**Trends to watch in 2007 and 2008:**

- **Inflation** – fuel costs and interest rates
- **Real Estate** – Foreclosures - human services and fiscal impacts
- **Federal presence** – Federal procurement, BRAC and security-related location decisions

15