

How Safe Are Our Roads?

Annual Data Report on the Impact of Drunk Driving on
Road Safety in the Washington D.C. Metropolitan Region



November, 2006

Prepared by
Virginia Tech
Institute for Community Health
and
Metropolitan Washington Council of Governments

How Safe Are Our Roads?

Annual Data Report on the Impact of Drunk Driving on
Road Safety in the Washington D.C. Metropolitan Region

November, 2006

Washington Regional Alcohol Program

1420 Spring Hill Road, Suite 250
McLean, VA 22102
(703) 893-0461
www.wrap.org

Prepared by

Virginia Tech Institute for Community Health

200 Architecture Annex
Blacksburg, VA 24061
(540) 231-2451

Metropolitan Washington Council of Governments

777 North Capitol Street, NE
Washington D.C. 20002
(202) 962-3200
www.mwcog.org

TABLE OF CONTENTS

| | |
|--|-----------|
| Executive Summary | 1 |
| A National and State Perspective | 3 |
| The Washington D.C. Metropolitan Region | 5 |
| Figure 1: Map of Washington Metro region | 5 |
| Methodology | 6 |
| Population Census Data | 9 |
| Table 1: Total Estimated Population by Jurisdiction, as of July 2000-2005 | 10 |
| Traffic Fatalities, Overall and Alcohol-related | 11 |
| Table 2: Alcohol-related Traffic Fatalities by Jurisdiction, 1996-2005..... | 14 |
| Table 3: Total Traffic Fatalities by Jurisdiction, 1996-2005 | 15 |
| Figure 2: Number of Alcohol-related Traffic Fatalities Over Time, By Region, 1996-2005 | 16 |
| Figure 3: Total Number of Motor Vehicle Fatalities Over Time, By Region, 1996-2005 | 16 |
| Table 4: Percentage of All Traffic Fatalities that were Alcohol-related by Jurisdiction, 1996-2005 | 17 |
| Figure 4: Percentage of Total Fatalities Due to Crashes Involving Impaired Drivers Over Time, By Region, 1996-2005 | 18 |
| Table 5A: SNAPSHOT! Motor Vehicle Fatalities in 2005 | 19 |
| Figure 5A.1: SNAPSHOT! Number of Total and Alcohol-related Motor Vehicle Fatalities, By Region, 2005 | 20 |
| Figure 5A.2: SNAPSHOT! Percentage of Fatalities: Alcohol-related and Change 2002-2005 | 20 |
| Table 5B: SNAPSHOT! Motor Vehicle Fatalities for Persons Under 21 Years of Age by Jurisdiction, 2005 | 21 |

Traffic Crashes, Overall and Alcohol-related 22

Table 6: Alcohol-related Traffic Crashes by Jurisdiction, 1996-2005..... 25

Table 7: Total Traffic Crashes by Jurisdiction, 1996-2005 26

Figure 6: Number of Alcohol-related Traffic Crashes Over Time, By Region, 1996-2005 27

Figure 7: Total Number of Motor Vehicle Crashes Over Time, By Region, 1996-2005 27

Table 8: Percentage of All Traffic Crashes that were Alcohol-related, 1996-2005..... 28

Figure 8: Percentage of Total Crashes Due to Crashes Involving Impaired Drivers Over Time, By Region, 1996-2005 28

Table 9: SNAPSHOT! Motor Vehicle Crashes in 2005 29

Figure 9A: SNAPSHOT! Number of Total and Alcohol-related Motor Vehicle Crashes, By Region, 2005..... 30

Figure 9B: SNAPSHOT! Percentage of Crashes: Alcohol-related and Change 2002-2005 30

Traffic Injuries, Overall and Alcohol-related 31

Table 10: Alcohol-related Traffic Injuries by Jurisdiction, 1999-2005 33

Table 11: Total Traffic Injuries by Jurisdiction, 1999-2005..... 34

Figure 10: Number of Alcohol-related Traffic Injuries Over Time, By Region, 1999-2005 35

Figure 11: Total Number of Motor Vehicle Injuries Over Time, By Region, 1999-2005 35

Table 12: Percentage of All Traffic Injuries that were Alcohol-related, 1999-2005 36

Figure 12: Percentage of Total Injuries Due to Crashes Involving Impaired Drivers Over Time, By Region, 1999-2005 36

Table 13: SNAPSHOT! Motor Vehicle Injuries in 2005 37

Figure 13A: SNAPSHOT! Number of Total and Alcohol-related Motor Vehicle Injuries, By Region, 2005..... 38

Figure 13B: SNAPSHOT! Percentage of Injuries: Alcohol-related and Change 2002-2005 38

Traffic Arrests, Alcohol-related 39

Table 14: Total Alcohol-related Driving Arrests by Jurisdiction, 1994-2005 41

Figure 14: Total Alcohol-related Arrests, All Ages, By Region, 1994-2005 42

Table 15: Total Alcohol-related Driving Arrests of Juveniles and Adults By Jurisdiction, 1999-2005 43

Impact on Our Youth 44

Table 16: Motor Vehicle Fatalities for Persons Under 21 Years of Age, 2002-2005..... 45

Table 17: Alcohol-related Motor Vehicle Injuries for Persons Under 21 Years of Age, 2002-2005 46

Table 18: Alcohol-related Motor Vehicle Arrests for Persons Under 21 Years of Age By Region, 2002-2005 47

Table 19A: SNAPSHOT! Motor Vehicle Fatalities for Persons Under 21 Years of Age, 2005..... 48

Table 19B: SNAPSHOT! Alcohol-related Crashes, Injuries, and Arrests for Persons Under 21 Years of Age, 2005..... 49

Summary 50

Table 20: Washington Metro region Percentage Change in Alcohol-related Incidents by Year, 1996-2005..... 50

Figure 20: Washington Metro region Percentage Change in Alcohol-related Incidents by Year, 1996-2005..... 50

Table 21: District of Columbia Percentage Change in Alcohol-related Incidents by Year, 1996-2005..... 51

Figure 21: District of Columbia Percentage Change in Alcohol-related Incidents by Year, 1996-2005..... 51

Table 22: Montgomery and Prince George’s Counties, Maryland, Percentage Change in Alcohol-related Incidents by Year, 1996-2005 52

Figure 22: Montgomery and Prince George’s Counties, Maryland, Percentage Change in Alcohol-related Incidents by Year, 1996-2005 52

Table 23: Northern Virginia Percentage Change in Alcohol-related Incidents by Year, 1996-2005..... 53

Figure 23: Northern Virginia Percentage Change in Alcohol-related Incidents by Year, 1996-2005..... 53

Final Comments 54

Acknowledgements..... 55

Definition of Terms 56

EXECUTIVE SUMMARY

Efforts are underway nationwide to curb alcohol-related motor vehicle crashes, injuries and fatalities. The Washington Metro region is no exception. The Washington Regional Alcohol Program has once again commissioned *How Safe Are Our Roads?* to provide insight into the progress made in 2005. Data is presented on traffic related fatalities, crashes, and injuries within the Washington-metropolitan area. For purposes of this report, any data that refer to “total” or “all” indicates people of all ages, i.e. both adults and juveniles.

2005 Overview

- The total number of alcohol-related crashes and fatalities in the Washington Metro region decreased substantially for the second straight year.
- However, 26% percent of juvenile fatalities in 2005 were alcohol-related, up significantly from 2004.
- The percentage of all fatalities that were alcohol-related decreased from 33.7% in 2004 to 22.4% in 2005.
- The Washington Metro region again saw a small increase in arrests for drunk driving in 2005.

2005 Traffic Fatalities

- The Washington Metro region saw an impressive decrease in alcohol-related fatalities, though there were significant differences within the region; the District of Columbia reported a large increase in alcohol-related fatalities (63.6%), while the Maryland and Virginia Regions reported large decreases (-22.6% & -41.3% respectively).
- The percentage of fatalities related to alcohol fell to 22.4% in 2005.
- The Washington Metro region continues to experience a lower percentage of alcohol-related motor vehicle fatalities than the nation (22.4.7% in region; 38.9% nationally).
- Total motor vehicle fatalities were up in 2005 in both the region (2.6%) and the nation (1.9%)

2005 Traffic Crashes

- The number of drunk driving crashes in Washington Metropolitan region decreased for the second straight year. This year’s decrease was more than nine percent (-9.2%).

- The percentage of alcohol-related crashes in the Washington Metro region was 5.2% in 2005, the lowest rate in the past decade.
- The District of Columbia saw a decrease in both the number of crashes (-4.2) and alcohol-related crashes (-9.2%).
- Seven of the ten jurisdictions in Northern Virginia posted double-digit decreases in alcohol-related crashes.

2005 Traffic Injuries

- With every jurisdiction reporting impressive reductions in drunk driving injuries, the number of injuries in the Washington Metro region decreased by an impressive 34.8%.

2005 Alcohol-Related Traffic Arrests

- The Washington Metro region did report a small increase in the number of impaired driving arrests (2.0%). It is important however to note that the number of arrests over the past several years is down significantly from the high reported in 2002.
- Prince Georges County Maryland and the City of Manassas Park Virginia saw the biggest percentage increase in arrest rates (10.6% & 54.9% respectively).

Impact on Our Youth

- Twenty-six percent of juvenile fatalities in 2005 were alcohol-related, a significant increase from 2004.
- In 2005, 8.8% of all alcohol-related motor vehicle fatalities involved people under 21 years of age. Alcohol-related fatalities represented 26.5% of all juvenile traffic fatalities – up significantly from 2004.
- Alcohol-related injuries in the Washington Metro region involving youth under the age of 21 also increased (15.0% in 2005).

A NATIONAL AND STATE PERSPECTIVE

Traffic safety continues to be a concern from local jurisdictions to the national level. Alcohol-related crashes, injuries, and fatalities are so designated if at least one driver or non-occupant (pedestrian or cyclist) involved is determined to have a Blood Alcohol Concentration of 0.01 g/dl or higher. Concerted efforts at the local, state, and national levels continued to keep the incidences of alcohol-related injuries and fatalities stable. Still, 16,885 people died in alcohol-related traffic incidents in 2005 alone, leaving plenty of work to be done.

Fatalities

“Alcohol-related crashes kill someone every 31 minutes and non-fatally injure someone every two minutes”

*National Highway
Traffic Safety
Administration*

- Motor vehicle crashes are the leading cause of death for persons between the ages of 3 and 33 years.
- About three in every ten Americans will be involved in an alcohol-related crash at some time in their lives. (NHTSA, 2001)
- Each year, alcohol-related crashes in the United States cost about \$51 billion (Blincoe 2002).
- In 2004, about 1.4 million drivers were arrested for driving under the influence of alcohol or narcotics (Department of Justice, 2004). That’s less than one percent of the 159 million self-reported episodes of alcohol-impaired driving among U.S. adults each year (Quinlan et al. 2005).
- Nationwide, fatalities in alcohol-related crashes increased by 1.5%
- The total number of alcohol-related fatalities are below 17,000 for the second year in a row.

Crashes, Injuries and Arrests

Alcohol use continues to significantly impact the safety of our roads. These statistics demonstrate the continued scope of the problem:

“About three in every ten Americans will be involved in an alcohol-related crash at some time in their lives.”

*National Highway
Traffic Safety
Administration*

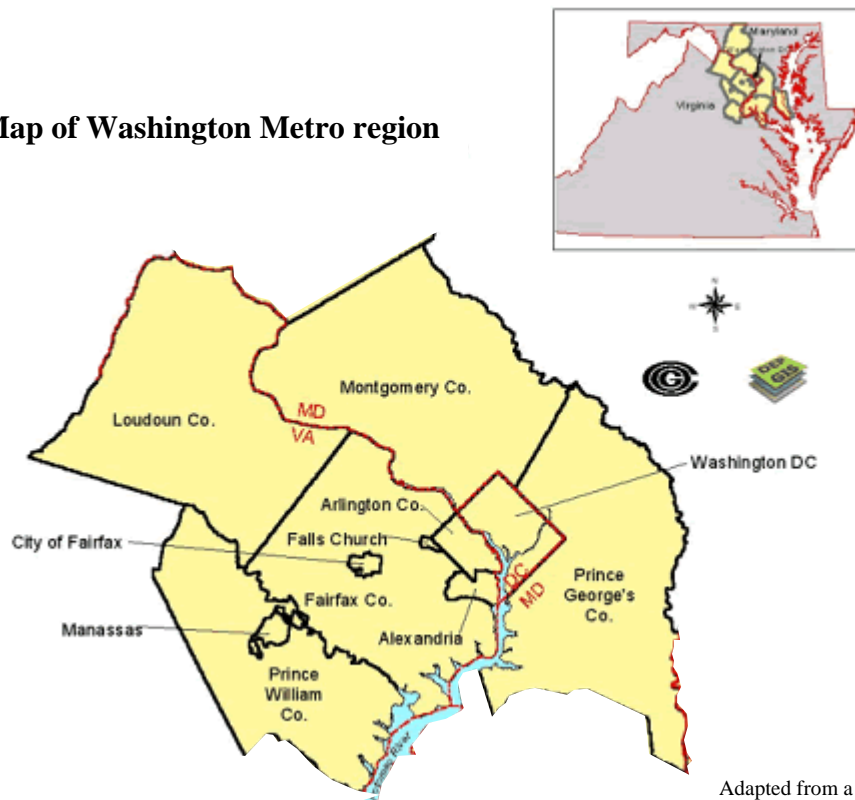
- Alcohol is a major factor in traffic crashes. Crashes involving alcohol are more likely to result in injuries and deaths than crashes where alcohol is not a factor.
- Alcohol-related motor vehicle crashes injure someone every two minutes (and kill someone every 31 minutes).
- More than 1.4 million people nationwide were arrested in 2004 for driving under the influence (Federal Bureau of Investigation’s Uniform Crime Report).
- The number of arrests is small in comparison to the number of self-reported alcohol-impaired driving trips, which nationally was more than 159 million (University of Chicago).
- One-third of all DUI arrestees are repeat offenders.

THE WASHINGTON D.C. METROPOLITAN REGION

For the purposes of this report, the Washington D.C. Metropolitan region consists of twelve jurisdictions identified in this report as the “Washington Metro region.”

- District of Columbia
- Maryland Counties
 - o Prince George’s County
 - o Montgomery County
- Northern Virginia Counties & Cities
 - o Arlington County
 - o Fairfax County
 - o Loudoun County
 - o Prince William County
 - o City of Alexandria
 - o City of Fairfax
 - o City of Falls Church
 - o City of Manassas
 - o City of Manassas Park

Figure 1: Map of Washington Metro region



Adapted from a map created by Metropolitan Washington Council of Governments, Washington, DC on July 14, 1999.

METHODOLOGY

Data Sources

Data compiled in this report comes from national, state, and local sources. Secondary sources include the U.S. Census Bureau, National Highway Traffic Safety Administration (NHTSA), and Virginia and Maryland Departments of Transportation. Primary data was collected from the local police departments of each jurisdiction.

It should be noted that the jurisdictional data in this report does not include State Police data. The State Police in Maryland and Virginia are charged with enforcing traffic laws on state highways and interstate expressways; inclusion of that data would likely increase the number of incidents in all categories. Two exceptions to this are Prince Georges County Maryland which does include State Police data in its reporting, and Fairfax County Virginia which includes State Police data in the reporting of fatalities only. Even given these qualifiers, it is possible that some jurisdictional data may include State Police figures because local police often respond to highway incidents when State Police are unavailable.

Following is a listing of the agencies providing local jurisdictional data:

- District of Columbia:
 - Metropolitan Police Department
 - U.S. Park Police
- Maryland
 - State of Maryland: Maryland State Police
 - Prince George's County Police Department
 - Montgomery County Department of Police
- Virginia
 - State of Virginia: Virginia Department of Motor Vehicles, 2005 Crash Facts
 - Arlington County Police Department
 - Fairfax County Police Department
 - Loudoun County Sheriff's Office
 - Prince William County Police Department
 - City of Alexandria Police Department
 - City of Fairfax Police Department
 - City of Falls Church Police Department
 - City of Manassas Police Department
 - City of Manassas Park Police Department

Data Analysis

The findings in this report are based on data collected from organizations and agencies from across the Washington Metro region. Data tables provide totals within the Washington Metro region as well as individual jurisdictions. Analysis focuses on changes in motor vehicle fatalities, injuries, crashes, and arrests. Results are reported as numbers and percentage of alcohol involved incidents to total numbers across time.

Data Limitations

It is important to note limitations that affected collection and analysis of this data, as they may limit comparability across jurisdictions and influence the level of reasonable analysis. Whenever possible, limitations are noted within the tables and figures. It is important that the reader keep the following in mind:

- It should be noted that Montgomery County, Maryland has recently changed and enhanced their database system. While these changes allow them to capture data more accurately, comparisons to previous year's data should be made with caution. In addition, because this report tracks just two jurisdictions in Maryland, regional totals could also be affected.
- There is no standardization for data definitions, collection, or recording within the Washington Metro region. Each agency has its own system of data collection, coding, and management. In addition, the range and type of data collected may not be consistent across jurisdictions. The data reported and analyzed in this report reflect data as reported by contact agencies. Independent verification of data to ensure accuracy is not within the scope of this report.
- Information on data collection and management systems and changes within jurisdictions was not solicited. In addition, changes in laws or judicial priorities may result in increased attention to specific data (e.g. blood alcohol level in driver fatalities related to stricter server laws). In some cases, this may result in missing data or data that appears inconsistent when examined against the same values for previous years. It is beyond the scope of this report to identify data methodology or priority changes for each jurisdiction.
- Data on impaired driver involvement in motor vehicle fatalities, injuries, crashes and arrests was requested for alcohol-impairment only. Therefore, data are assumed to reflect only alcohol impairment and is reported in this way.
- The number of incidents, total and related to alcohol impairment, is very small for some jurisdictions. Due to the small numbers, jurisdictional analysis might easily misrepresent the problem. For example, an increase of one alcohol-related fatality would have little impact in a jurisdiction that saw 50 alcohol-related fatalities the previous year, but would appear to represent a significant change in a small jurisdiction with only one or two alcohol-related fatalities the previous year.

- Data are reported and analyzed by absolute numbers only. At this time, information that would allow identification of comparable rates is unavailable. It is assumed that people involved in motor vehicle crashes and arrests may live within or outside the Washington Metro region. Collection of data on driver or passenger residence versus jurisdiction of accident is beyond the scope of this report. Calculating rates based on the Washington Metro region's population or number of licensed drivers would not accurately represent the problem since drivers may be from outside the jurisdiction.
- Data on people under the age of 21 years is collected in an inconsistent manner among jurisdictions. Caution must be used in evaluation of this data due to varied definitions and missing data.
- Many charts display two regional total numbers. The first, "DC Regional Total" is the total of the District of Columbia, the Maryland Region, and the Northern Virginia Region. The second regional number, "Regional Total Adjusted" includes data from the United States Park Police. Because the Park Police information has only been recently collected, it is shown separately and the two regional totals are shown so that comparisons with previous years can be done.

POPULATION CENSUS DATA

Population data was obtained from the U.S. Census Bureau Population Division. Jurisdictional population figures are provided as of July 1 of each year reported.

The Washington Metro region's population rose by 1.3% over the past year. The State of Maryland's population showed a smaller increase of 0.8% while the State of Virginia's increase of 1.4% was in line with the national average of 0.9%. The local jurisdiction with the largest increase in population was once again Loudoun County, VA (6.8%) compared to a 2.5% increase for Northern Virginia as a whole. The District of Columbia continued to see a decrease in population (-0.5%) over the past year.

The impact of changing population on motor vehicle crashes and arrests is not clear from the data obtained for this report. While residential population is decreasing slightly in the central area, the location of employers and social venues continues to drive daily commutes. Growth of employment in the suburban regions, opening of suburban shopping and eating venues, and expansion of commuter options via bus or rail may significantly impact the movement of people in the region. Evaluation of the impact of these components on regional volume of motor vehicle traffic is beyond the scope of this report.

Table 1: Total Estimated Population by Jurisdiction, as of July, 2001-2005

| | 2001 | 2002 | 2003 | 2004 | 2005 | Percent Change in Population 2001-2005 | Percent Change in Population 2004-2005 |
|--------------------------------|--------------------|--------------------|--------------------|--------------------|--------------------|--|--|
| District of Columbia | 572,716 | 569,157 | 563,384 | 553,523 | 550,521 | -3.9% | -0.5% |
| Maryland | | | | | | | |
| <i>State Total</i> | 5,383,377 | 5,450,525 | 5,508,909 | 5,558,058 | 5,600,388 | 4.0% | 0.8% |
| County | | | | | | | |
| Montgomery | 894,449 | 908,831 | 918,881 | 921,690 | 927,583 | 3.7% | 0.6% |
| Prince George's | 818,119 | 829,372 | 838,716 | 842,967 | 846,123 | 3.4% | 0.4% |
| MD Regional Total | 1,712,568 | 1,738,203 | 1,757,597 | 1,764,657 | 1,773,706 | 3.6% | 0.5% |
| Virginia | | | | | | | |
| <i>State Total</i> | 7,185,522 | 7,273,572 | 7,365,284 | 7,459,827 | 7,567,465 | 5.3% | 1.4% |
| County | | | | | | | |
| Arlington | 189,661 | 189,090 | 187,873 | 186,117 | 195,965 | 3.3% | 5.3% |
| Fairfax | 987,030 | 994,121 | 1,000,405 | 1,003,157 | 1,006,529 | 2.0% | 0.3% |
| Loudoun | 190,134 | 204,042 | 221,746 | 239,156 | 255,518 | 34.4% | 6.8% |
| Prince William | 298,135 | 311,630 | 325,324 | 336,586 | 348,588 | 16.9% | 3.6% |
| City of Alexandria | 130,403 | 129,938 | 128,923 | 128,206 | 135,337 | 3.8% | 5.6% |
| City of Fairfax | 21,853 | 21,905 | 22,031 | 22,062 | 21,963 | 0.5% | -0.4% |
| City of Falls Church | 10,561 | 10,602 | 10,485 | 10,781 | 10,781 | 2.1% | 0.0% |
| City of Manassas | 35,887 | 36,726 | 37,166 | 37,615 | 37,569 | 4.7% | -0.1% |
| City of Manassas Park | 10,757 | 10,924 | 10,990 | 11,519 | 11,622 | 8.0% | 0.9% |
| Northern Virginia | 1,874,421 | 1,908,978 | 1,944,943 | 1,975,199 | 2,023,872 | 8.0% | 2.5% |
| DC Metro Regional Total | 4,159,705 | 4,216,338 | 4,265,924 | 4,293,379 | 4,348,099 | 4.5% | 1.3% |
| National | 185,102,075 | 287,941,220 | 290,788,976 | 293,655,404 | 296,410,404 | 60.1% | 0.9% |

Data Source: Annual Estimates of the population, Population Division, U.S. Census Bureau.

TRAFFIC FATALITIES

National Comparison

Nationwide the total number of traffic fatalities and the percentage of fatalities in alcohol-related crashes increased over the past year. Specifically, alcohol-related fatalities increased by 1.5% while all traffic fatalities increased by 1.9% in 2005 compared with 2004. Two hundred and fifty seven more people died in 2005 from alcohol-related crashes than in 2004 (16,885 vs. 16,628).

Nationally, the percentage of traffic fatalities that related to alcohol impairment remained steady between 2004 (39.0%) and 2005 (38.9 %).

State Comparisons

Maryland

The state of Maryland saw notable decreases in both overall traffic fatalities and in alcohol-related fatalities from 2004 to 2005. Maryland's decrease in the percentage of alcohol-related fatalities (-18.7%) since last year is in opposition to the national trend (1.5%). Maryland saw the percentage of motor vehicle fatalities reported to be alcohol-related decrease from 43.7% in 2004 to 38.3% in 2005, which is below the national average of 39.0%.

It should be noted that Montgomery County has recently changed and enhanced their database system. While these changes allow them to capture data more accurately, comparisons to previous year's data should be made with caution. In addition, because this report tracks just two jurisdictions in Maryland, regional totals could also be affected.

Virginia

The Commonwealth of Virginia saw an increase of 3.0% in total traffic fatalities in 2005, going from 919 in 2004 to 947 in 2005. Fatalities related to alcohol also increased slightly (1.5%), which was exactly the same as the nation as a whole. The percentage of fatalities that were alcohol-related decreased from 39.3% in 2004 to 36.6% in 2005 - below the national percentage of 39.0%.

Washington Metro Region

Despite gains in reducing the number of alcohol-related fatalities in some areas of the region, the use of alcohol continues to be a significant factor in motor vehicle fatalities.

The Washington Metro region saw an overall increase in motor vehicle accident fatalities (2.6%), but a decrease in alcohol-related fatalities (-19.1%) from last year. The percentage of alcohol-related fatalities decreased substantially from 37.4% in 2004 to 25.6% in 2005 – the lowest percentage since 1998.

The percentage of traffic fatalities related to alcohol decreased in the Washington Metro region

Alcohol-related fatalities have decreased 16.5% as compared to 1996 in the Washington Metro region. Total motor vehicle fatalities increased 6.7% during that same period. The percentage of traffic fatalities related to alcohol has varied from a low of 25.4% in 1998 to a high of 37.4% in 2004.

Regional Jurisdictions

District of Columbia

In 2005, the District of Columbia saw an increase in both motor vehicle fatalities (8.9%) and in alcohol-related traffic fatalities (63.6%). However, these figures are still substantially lower than the unusually high numbers seen in 2003.

36.7% of traffic fatalities in the District of Columbia were related to alcohol.

In the District of Columbia, the number of alcohol-related traffic fatalities increased from 11 in 2004 to 18 in 2005. Over thirty-six percent (36.7%) of all traffic fatalities were related to alcohol use in 2005, a marked decrease from 2004. Since 1996, alcohol-related fatalities have increased 37.5%, while total traffic fatalities have decreased (-30.8%) over the same period.

Montgomery and Prince George's Counties, Maryland

The total number of traffic fatalities in 2005 decreased in Montgomery County by a huge 35.6% while Prince George's County saw an increase of 10.7%. Both Maryland counties in the region experienced decreases in alcohol-related fatalities over 2004; in Montgomery County by

-43.8% and in Prince Georges County by -13.5%. These decreases are in opposition to the slight increase seen in the nation as a whole (1.5%).

The Maryland & Virginia regions both saw significant decreases in alcohol-related fatalities in 2005.

The Maryland region saw a decrease in overall traffic fatalities from 2004 to 2005 (-4.4%), as well as a significant decrease in alcohol-related fatalities in the state (22.6%). The two counties in the Maryland region saw the percentage of motor vehicle fatalities reported to be alcohol-related increase slightly from 22.1% in 2004 to 23.8% in 2005. In comparison, the national trend of percentages of fatalities related to alcohol remained constant.

Northern Virginia

Northern Virginia saw fatalities related to alcohol decrease by 41.3%, which was significantly better than the nation as a whole. The percentage of fatalities that were alcohol-related also decreased impressively from 49.5% in 2004 to 23.5% in 2005. Northern Virginia's percentage of alcohol-related fatalities is below the national percentage. The region saw an increase in total traffic fatalities in 2005, up 13.9% over last year.

Within Northern Virginia, Loudoun County saw the most significant increase in total traffic fatalities, from 11 in 2004 to 20 in 2005, but a healthy decrease in alcohol-related fatalities (from 8 in 2004 to 3 in 2005). Prince William County also saw a double digit decrease in alcohol-related fatalities (-60.0%).

Table 2: Alcohol Related Traffic Fatalities by Jurisdiction, 1996-2005

| | | | | | | | | | | | Percent Change | |
|---------------------------------|-------------|-----------|-----------|-----------|-----------|------------|------------|------------|------------|-----------|----------------|---------------|
| | 1996 | 1997 | 1998 | 1999 | 2000 | 2001 | 2002 | 2003 | 2004 | 2005 | | |
| | | | | | | | | | | | 2003-2004 | 1996-2005^ |
| District of Columbia | 8 | 10 | 16 | 14 | 9 | 14 | 9 | 34 | 11 | 18 | 63.6% | 125.0% |
| Maryland | | | | | | | | | | | | |
| <i>State Total</i> | - | - | - | - | - | - | 276 | 281 | 289 | 235 | -18.7% | - |
| Montgomery County | 7 | 17 | 8 | 12 | 13 | 18 | 11 | 12 | 16 | 9 | -43.8% | 28.6% |
| Prince George's County | 50 | 29 | 26 | 25 | 27 | 28 | 35 | 26 | 37 | 32 | -13.5% | -36.0% |
| MD Regional Total | 57 | 46 | 34 | 37 | 40 | 46 | 46 | 38 | 53 | 41 | -22.6% | -28.1% |
| Virginia | | | | | | | | | | | | |
| <i>State Total</i> | - | - | - | - | - | - | 379 | 361 | 342 | 347 | 1.5% | - |
| Arlington County | 3 | 5 | 1 | 2 | 9 | 5 | 7 | 2 | 1 | 0 | -100.0% | -100.0% |
| Fairfax County | 16 | 17 | 13 | 20 | 23 | 18 | 25 | 29 | 26 | 20 | -23.1% | 25.0% |
| Loudoun County | 7 | 5 | 7 | 1 | 2 | 4 | 9 | 9 | 8 | 3 | -62.5% | -57.1% |
| Prince William County | 9 | 10 | 5 | 7 | 9 | 16 | 10 | 8 | 10 | 4 | -60.0% | -55.6% |
| City of Alexandria | 1 | 0 | 2 | 1 | 2 | 3 | 2 | 0 | 1 | 0 | -100.0% | -100.0% |
| City of Fairfax | 1 | 0 | 0 | 0 | 0 | 0 | 0 | 2 | 0 | 0 | 0.0% | -100.0% |
| City of Falls Church | 1 | 0 | 0 | 0 | 0 | 0 | 0 | 0 | 0 | 0 | 0.0% | -100.0% |
| City of Manassas | - | 0 | 0 | 0 | 1 | 0 | 0 | 0 | 0 | 0 | 0.0% | - |
| City of Manassas Park | - | 0 | 0 | 0 | 0 | 0 | 0 | 0 | 0 | 0 | 0.0% | - |
| Northern Virginia Total | 38* | 37 | 28 | 31 | 46 | 46 | 53 | 50 | 46 | 27 | -41.3% | -28.9% |
| DC Metro Regional Total | 103* | 93 | 78 | 82 | 95 | 106 | 108 | 122 | 110 | 86 | -21.8% | -16.5% |
| National Parks in Region | -- | -- | -- | -- | -- | -- | 8 | -- | 0 | 3 | 300.0% | -- |
| Regional Total Adjusted | -- | -- | -- | -- | -- | -- | 116 | -- | 110 | 89 | -19.1% | -- |
| National | -- | -- | -- | -- | -- | -- | 17,524 | 17,013 | 16,628 | 16,885 | 1.5% | -- |

^Percent change not calculated for all jurisdictions due to missing data elements.

*Data for cities of Manassas and Manassas Park not included in regional totals.

Source for National and state data: National Highway Traffic Safety Administration, U.S. Department of Transportation

Source for local data: Jurisdictional contacts, see specific contact in Methodology

Table 3: Total Traffic Fatalities by Jurisdiction, 1996-2005

| | 1996 | 1997 | 1998 | 1999 | 2000 | 2001 | 2002 | 2003 | 2004 | 2005 | Percent Change | |
|---------------------------------|-------------|------------|------------|------------|------------|------------|------------|------------|------------|------------|-----------------------------|--------------|
| | | | | | | | | | | | 2004-2005 | 1996-2005^ |
| | | | | | | | | | | | District of Columbia | 65 |
| Maryland | | | | | | | | | | | | |
| <i>State Total</i> | - | - | - | - | - | - | 661 | 649 | 643 | 614 | -4.5% | - |
| Montgomery County | 49 | 55 | 46 | 49 | 58 | 59 | 71 | 50 | 59 | 38 | -35.6% | -22.4% |
| Prince George's County | 112 | 85 | 111 | 79 | 91 | 128 | 141 | 122 | 121 | 134 | 10.7% | 19.6% |
| MD Regional Total | 161 | 140 | 157 | 128 | 149 | 187 | 212 | 172 | 180 | 172 | -4.4% | 6.8% |
| Virginia | | | | | | | | | | | | |
| <i>State Total</i> | - | - | - | - | - | - | 914 | 942 | 919 | 947 | 3.0% | - |
| Arlington County | 10 | 7 | 3 | 8 | 14 | 9 | 12 | 7 | 3 | 4 | 33.3% | -60.0% |
| Fairfax County | 42 | 59 | 45 | 49 | 70 | 53 | 64 | 62 | 64 | 61 | -4.7% | 45.2% |
| Loudoun County | 17 | 13 | 21 | 11 | 9 | 15 | 16 | 24 | 11 | 20 | 81.8% | 17.6% |
| Prince William County | 14 | 32 | 19 | 24 | 27 | 31 | 23 | 32 | 20 | 23 | 15.0% | 64.3% |
| City of Alexandria | 2 | 2 | 3 | 4 | 5 | 5 | 6 | 2 | 3 | 2 | -33.3% | 0.0% |
| City of Fairfax | 2 | 1 | 0 | 0 | 0 | 1 | 1 | 2 | 0 | 2 | 200.0% | 0.0% |
| City of Falls Church | 2 | 0 | 0 | 0 | 0 | 1 | 1 | 0 | 0 | 0 | 0.0% | -100.0% |
| City of Manassas | - | 0 | 0 | 1 | 1 | 2 | 1 | 1 | 0 | 3 | 300.0% | - |
| City of Manassas Park | - | 0 | 0 | 1 | 0 | 0 | 0 | 0 | 0 | 0 | 0.0% | - |
| Northern Virginia Total^ | 89* | 114 | 91 | 98 | 126 | 117 | 124 | 130 | 101 | 115 | 13.9% | 29.2% |
| DC Metro Regional Total^ | 315* | 317 | 307 | 272 | 325 | 376 | 386 | 369 | 326 | 336 | 3.1% | 6.7% |
| National Parks in Region | -- | -- | -- | -- | -- | -- | 21 | -- | 16 | 15 | -6.3% | -- |
| Regional Total Adjusted | -- | -- | -- | -- | -- | -- | 407 | -- | 342 | 351 | 2.6% | -- |
| National | -- | -- | -- | -- | -- | -- | 43,005 | 42,643 | 42,636 | 43,443 | 1.9% | -- |

^Percent change not calculated for all jurisdictions due to missing data elements.

*Data for cities of Manassas and Manassas Park not included in regional totals.

Source for National and state data: National Highway Traffic Safety Administration, U.S. Department of Transportation

Source for local data: see jurisdictional contacts in Methodology

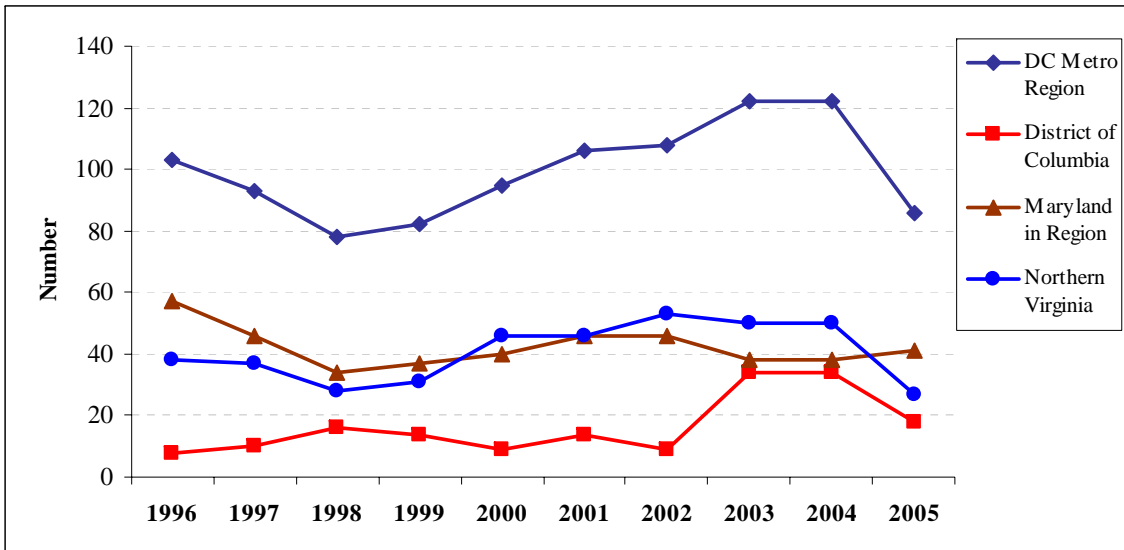


Figure 2: Number of Alcohol-related Traffic Fatalities Over Time, By Region, 1996-2005

Figure 3: Total Number of Motor Vehicle Fatalities Over Time, By Region, 1996-2005

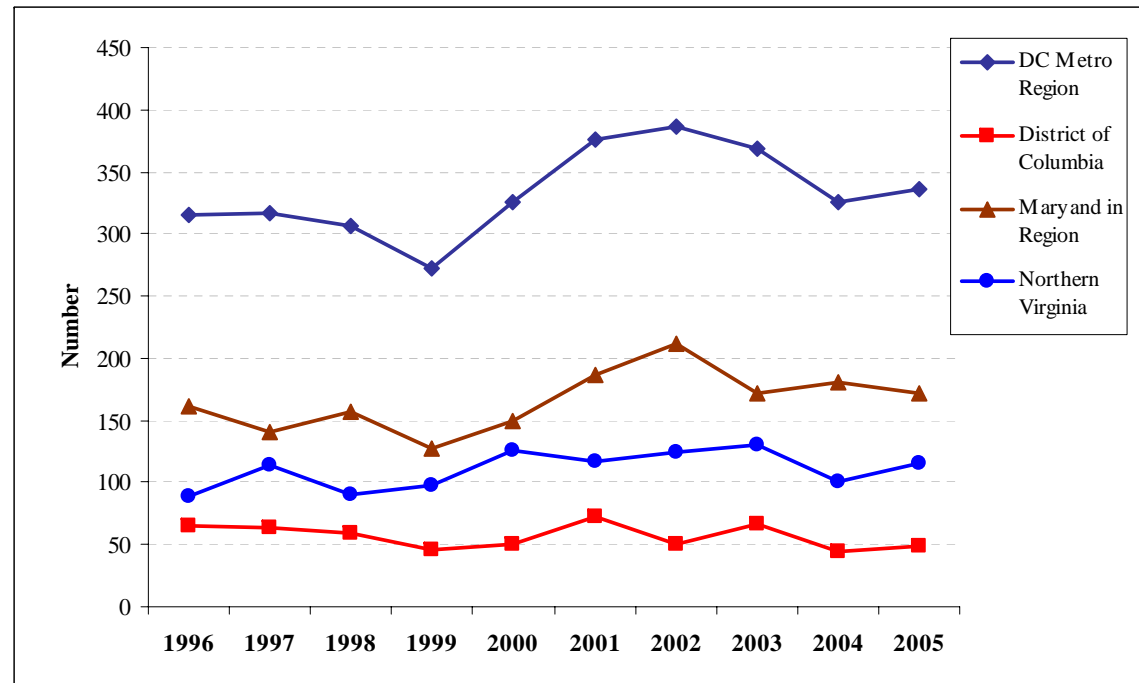


Table 4: Percentage of All Traffic Fatalities that were Alcohol Related by Jurisdiction, 1996-2005

| | 1996 | 1997 | 1998 | 1999 | 2000 | 2001 | 2002 | 2003 | 2004 | 2005 |
|---------------------------------|---------------|--------------|--------------|--------------|--------------|--------------|--------------|--------------|--------------|--------------|
| District of Columbia | 12.3% | 15.9% | 27.1% | 30.4% | 18.0% | 19.4% | 18.0% | 50.7% | 75.6% | 36.7% |
| Maryland | | | | | | | | | | |
| State Total | - | - | - | - | - | - | 41.8% | 43.3% | 43.7% | 38.3% |
| Montgomery County | 14.3% | 30.9% | 17.4% | 24.5% | 22.4% | 30.5% | 15.5% | 24.0% | 20.3% | 23.7% |
| Prince George's County | 44.6% | 34.1% | 23.4% | 31.6% | 29.7% | 21.9% | 24.8% | 21.3% | 21.5% | 23.9% |
| MD Regional Total | 35.4% | 32.9% | 21.7% | 28.9% | 26.8% | 24.6% | 21.7% | 22.1% | 21.1% | 23.8% |
| Virginia | | | | | | | | | | |
| State Total | - | - | - | - | - | - | 41.5% | 38.3% | 39.3% | 36.6% |
| Arlington County | 30.0% | 71.4% | 33.3% | 25.0% | 64.3% | 55.6% | 58.3% | 28.6% | 66.7% | 0.0% |
| Fairfax County | 38.1% | 28.8% | 28.9% | 40.8% | 32.9% | 34.0% | 39.1% | 46.8% | 45.3% | 32.8% |
| Loudoun County | 41.2% | 38.5% | 33.3% | 9.1% | 22.2% | 26.7% | 56.3% | 37.5% | 81.8% | 15.0% |
| Prince William County | 64.3% | 31.3% | 26.3% | 29.2% | 33.3% | 51.6% | 43.5% | 25.0% | 40.0% | 17.4% |
| City of Alexandria | 50.0% | 0.0% | 66.7% | 25.0% | 40.0% | 60.0% | 33.3% | 0.0% | 0.0% | 0.0% |
| City of Fairfax | 50.0% | 0.0% | 0.0% | 0.0% | 0.0% | 0.0% | 0.0% | 100.0% | 0.0% | 0.0% |
| City of Falls Church | 50.0% | 0.0% | 0.0% | 0.0% | 0.0% | 0.0% | 0.0% | 0.0% | 0.0% | 0.0% |
| City of Manassas | - | 0.0% | 0.0% | 0.0% | 100.0% | 0.0% | 0.0% | 0.0% | 0.0% | 0.0% |
| City of Manassas Park | - | 0.0% | 0.0% | 0.0% | 0.0% | 0.0% | 0.0% | 0.0% | 0.0% | 0.0% |
| Northern Virginia Total | 42.7%^ | 32.5% | 30.8% | 31.6% | 36.5% | 39.3% | 42.7% | 38.5% | 49.5% | 23.5% |
| DC Metro Regional Total | 32.7%^ | 29.3% | 25.4% | 30.1% | 29.2% | 28.2% | 28.0% | 33.1% | 37.4% | 25.6% |
| National Parks in Region | -- | -- | -- | -- | -- | -- | 31.8% | -- | 0.0% | 20.0% |
| Regional Total Adjusted | -- | -- | -- | -- | -- | -- | 28.5% | -- | 33.7% | 25.4% |
| National | -- | -- | -- | -- | -- | -- | 40.7% | 39.9% | 39.0% | 38.9% |

^Data for cities of Manassas and Manassas Park not included in regional totals.

Source for National and state data: National Highway Traffic Safety Administration, U.S. Department of Transportation

Source for local data: see jurisdictional contacts in Methodology

Figure 4: Percentage of Total Fatalities Due to Crashes Involving Impaired Drivers Over Time, By Region, 1996-2004

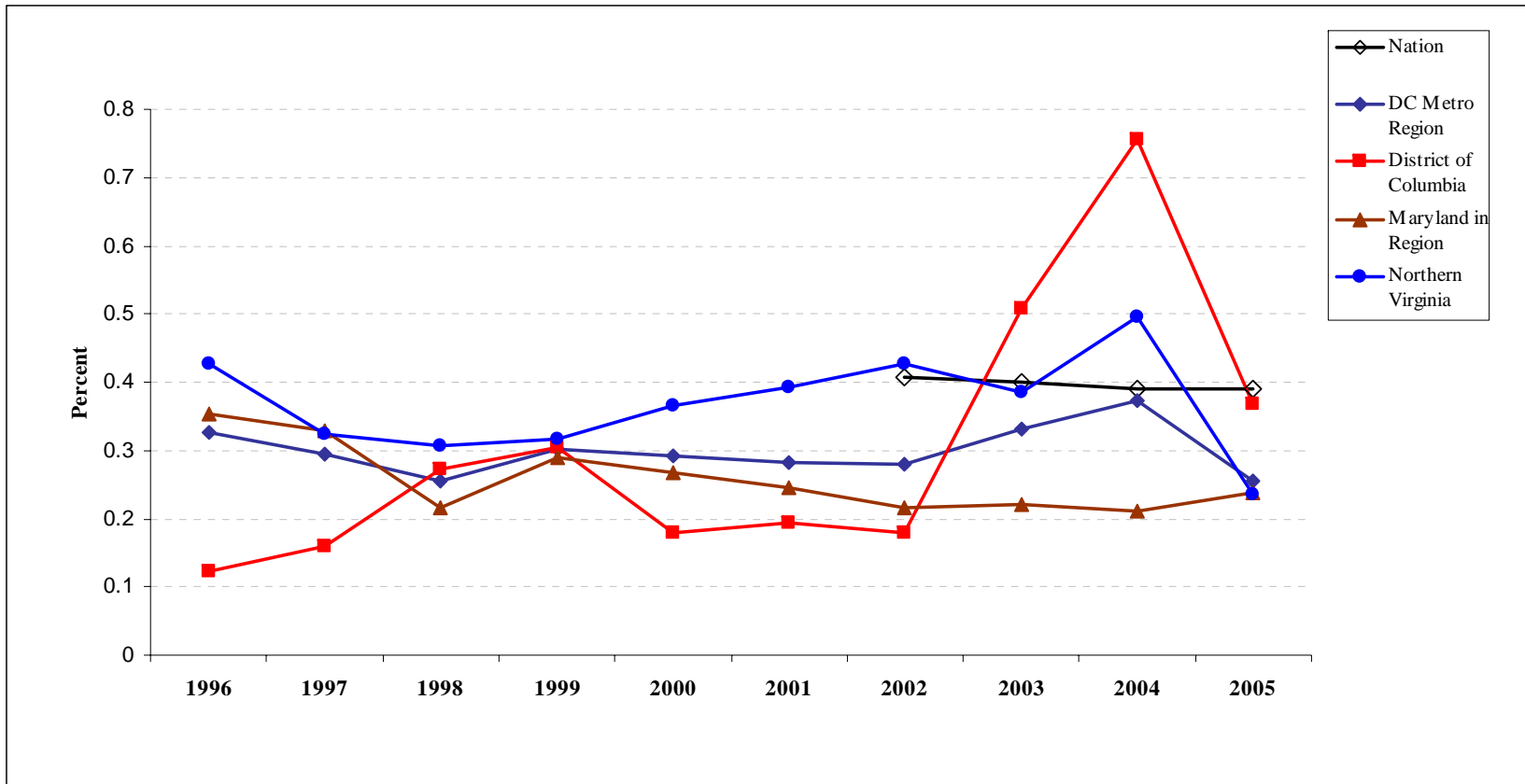


Table 5A: SNAPSHOT! Motor Vehicle Fatalities in 2005

| | Total Fatalities | Alcohol Related Fatalities | Percentage of Total Fatalities that were Alcohol Related | Percent Change Alcohol Related Fatalities, 2004- 2005 |
|---------------------------------|-----------------------------|---|---|--|
| District of Columbia | 49 | 18 | 36.7% | 63.6% |
| Maryland | | | | |
| <i>State Total</i> | 614 | 235 | 38.3% | -18.7% |
| Montgomery County | 38 | 9 | 23.7% | -43.8% |
| Prince George's County | 134 | 32 | 23.9% | -13.5% |
| MD Regional Total | 172 | 41 | 23.8% | -22.6% |
| Virginia | | | | |
| <i>State Total</i> | 947 | 347 | 36.6% | 1.5% |
| Arlington County | 4 | 0 | 0.0% | -100.0% |
| Fairfax County | 61 | 20 | 32.8% | -23.1% |
| Loudoun County | 20 | 3 | 15.0% | -62.5% |
| Prince William County | 23 | 4 | 17.4% | -60.0% |
| City of Alexandria | 2 | 0 | 0.0% | -100.0% |
| City of Fairfax | 2 | 0 | 0.0% | 0.0% |
| City of Falls Church | 0 | 0 | 0.0% | 0.0% |
| City of Manassas | 3 | 0 | 0.0% | 0.0% |
| City of Manassas Park | 0 | 0 | 0.0% | 0.0% |
| Northern Virginia Total | 115 | 27 | 23.5% | -41.3% |
| DC Metro Regional Total | 336 | 86 | 25.6% | -21.8% |
| National Parks in Region | 16 | 0 | 0.0% | 300.0% |
| Regional Total Adjusted | 352 | 86 | 24.4% | -19.1% |
| National | 43,443 | 16,885 | 38.9% | 1.5% |

Source for National and state data: National Highway Traffic Safety Administration, U.S. Department of Transportation
 Source for local data: Jurisdictional contacts, see specific contact in Methodology

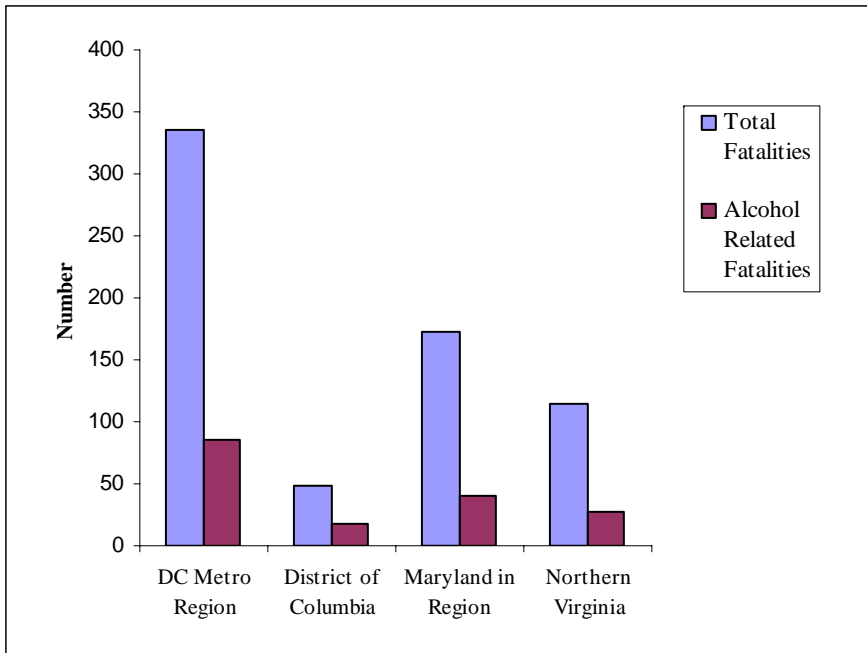


Figure 5A.1: SNAPSHOT! Number of Total and Alcohol-Related Motor Vehicle Fatalities, By Region, 2004

Figure 5A.2: SNAPSHOT! Percentage of Fatalities: Alcohol-Related and Change 2002-2004

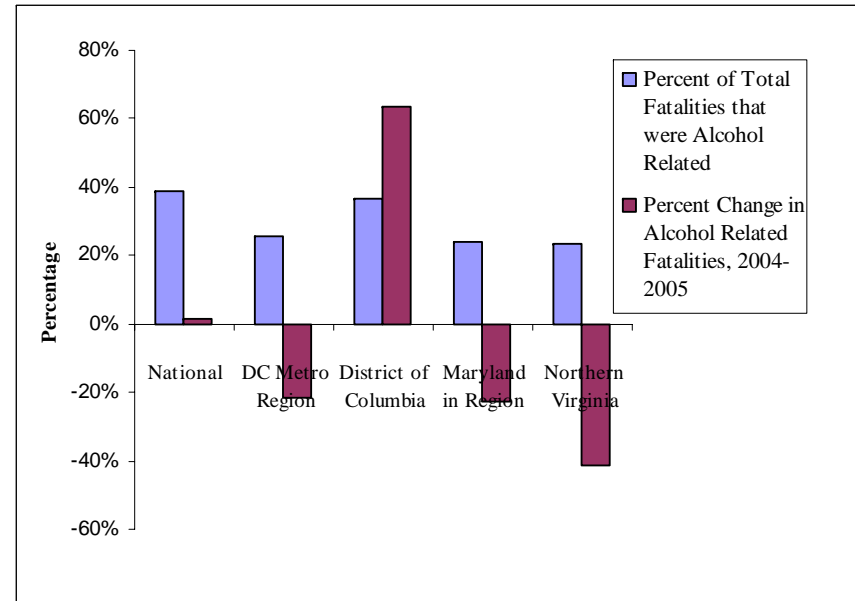


Table 5B: SNAPSHOT! Motor Vehicle Fatalities for Persons Under 21 Years of Age, 2005

| | Total Fatalities | Alcohol Related Fatalities | Percentage of Total Fatalities that were Alcohol Related | Percent Change Alcohol Related Fatalities 2004-2005 |
|---|-----------------------------|---|---|--|
| District of Columbia | 5 | 3 | 60.0% | 200.0% |
| Maryland | | | | |
| Montgomery County | 6 | 1 | | |
| Prince George's County | 21 | 2 | | |
| MD Regional Total | 27 | 3 | 11.1% | -57.1% |
| Virginia | | | | |
| Arlington County | 2 | 0 | | |
| Fairfax County | 11 | 6 | | |
| Loudoun County | 2 | 0 | | |
| Prince William County | 2 | 1 | | |
| City of Alexandria | 0 | 0 | | |
| City of Fairfax | 0 | 0 | | |
| City of Falls Church | 0 | 0 | | |
| City of Manassas | 0 | 0 | | |
| City of Manassas Park | 0 | 0 | | |
| VA Regional Total | 17 | 7 | 41.2% | 250.0% |
| National Parks in Region | 0 | 0 | 0.0% | -- |
| Regional Total Adjusted | 14 | 2 | 14.3% | -- |
| DC Metro Regional Total | 49 | 13 | 26.5% | 30.0% |
| ^Montgomery County data for persons under the age of 21 years determined to be driver and "at fault" for accident | | | | |
| *Prince William County data represents persons under the age of 24 years | | | | |
| Source for local data: see jurisdictional contacts in Methodology | | | | |

TRAFFIC CRASHES

Washington Metro Region

The number of alcohol-related motor vehicle crashes decreased in the Washington Metro region between 2004 and 2005. While the percentage of crashes involving alcohol is relatively low, these crashes lead to injury and death at a much higher rate than overall crashes.

Alcohol-related crashes in the Washington Metro region decreased 9.2% in 2005.

There were 87,919 motor vehicle crashes in the Washington Metro region in 2005; 4,494 as a result of alcohol impairment. Total crashes decreased 0.6% from last year and alcohol-related crashes decreased a notable 9.2% compared to 2004. The percentage of alcohol-related crashes remained constant at 5.8% in both 2004 and 2005.

Until the decreases shown over the past two years, the number of alcohol-related traffic crashes in the Washington Metro region had grown each year from 1997 until 2003. The percentage of alcohol-related crashes has ranged between a low of 5.6% (2001) and a high of 7.2% (2002) over the past ten years.

Motor vehicle crashes related to impaired driving in the Washington Metro region have decreased by 4.4% between 1996 and 2005. The total number of traffic crashes increased 44.3% during that same time period. This increase in the Metro area can be attributed mostly to increases in the Virginia region (30.1%)

Regional Jurisdictions

District of Columbia

In 2005 the District of Columbia saw decreases in both total and alcohol-related motor vehicle crashes.

Total crashes decreased by 4.2% and alcohol-related crashes dropped by 9.2%. The percentage of crashes that were alcohol-related (1.3%) was lower than the rest of the Washington Metro region.

Montgomery and Prince George's Counties, Maryland

Maryland counties saw a significant decrease in the number of alcohol-related crashes in 2005. This is tempered by the fact that there was a small increase in the percentage of crashes related to alcohol.

Since 1996, counties in the Maryland Region have seen a significant decrease in alcohol-related crashes (-14.6%).

There was a 2.5% decrease in the number of alcohol-related crashes in 2005 compared to 2004. The percentage of crashes involving alcohol was 7.7%, the same as in 2004. Total crashes decreased by 1.3%.

In the past year, alcohol-related crashes increased in Prince George's County by 7.9% while Montgomery County saw a decrease of 3.7%. Overall traffic crashes increased in Prince George's County (2.8%) and decreased in Montgomery County (-6.3%).

Since 1996, Maryland counties in the Washington Metro region have seen a significant decrease in the number of alcohol-related crashes (-14.6%). Montgomery County's highest percentage of alcohol-related crashes was in 1996 (8.3%); its lowest was in 2001 (5.1%). Prince George's County's highest rate was also in 1996 (9.2%), with its lowest being in 6.2% in 1999. The number of total motor vehicle crashes in the region has decreased (-2.3%) from 1996 to 2005.

Northern Virginia

During 2005 there was a dramatic improvement in the number of alcohol-related motor vehicle crashes in Northern Virginia (-19.9%). Total crashes increased slightly (3.8%). The percentage of crashes related to alcohol was 5.2% in 2005, a decrease from last year's 7.0%.

Localities within the Northern Virginia region had widely varying activity in 2005. For example, the largest decrease in alcohol-related traffic crashes in the Northern Virginia region was in the City of Falls Church which went from 10 crashes in 2004 down to zero in 2005. The largest increase was in the City of Manassas (27.1%). The percentage of

crashes related to alcohol ranged from 9.6% in the City of Manassas Park to 0% in the City of Falls Church.

Between 1996 and 2005 the number of alcohol-related crashes in Northern Virginia has decreased 3.2%. In the same time period, total crashes rose 30.1%. The percentage of crashes that were related to alcohol significantly decreased for the region in 2005 (5.2%).

Table 6: Alcohol Related Traffic Crashes by Jurisdiction, 1996-2005

| | 1996 | 1997 | 1998 | 1999 | 2000 | 2001 | 2002 | 2003 | 2004 | 2005 | Percent Change | |
|---------------------------------|---------------|---------------|---------------|---------------|---------------|--------------|---------------|--------------|--------------|--------------|----------------|---------------|
| | | | | | | | | | | | 2004-2005 | 1996-2005 |
| District of Columbia | - | - | - | - | - | 287 | - | 698 | 261 | 237 | -9.2% | -- |
| Maryland | | | | | | | | | | | | |
| Montgomery County | 1,131 | 809 | 775 | 926 | 899 | 720 | 963 | 1,010 | 1,012 | 975 | -3.7% | -13.8% |
| Prince George's County | 1,449 | 962 | 1,003 | 876 | 1,011 | 1,305 | 1,299 | 1,226 | 1,139 | 1,229 | 7.9% | -15.2% |
| MD Regional Total | 2,580 | 1,771 | 1,778 | 1,802 | 1,910 | 2,025 | 2,262 | 2,236 | 2,151 | 2,204 | 2.5% | -14.6% |
| Virginia | | | | | | | | | | | | |
| Arlington County | 305 | 281 | 272 | 307 | 339 | 352 | 358 | 324 | 268 | 224 | -16.4% | -26.6% |
| Fairfax County | 994 | 967 | 969 | 1,073 | 1,057 | 1,233 | 1,250 | 1,243 | 1,198 | 935 | -22.0% | -5.9% |
| Loudoun County | 172 | 137 | 156 | 166 | 166 | 222 | 259 | 246 | 236 | 184 | -22.0% | 7.0% |
| Prince William County | 346 | 358 | 356 | 380 | 430 | 415 | 443 | 462 | 452 | 366 | -19.0% | 5.8% |
| City of Alexandria | 161 | 152 | 140 | 127 | 136 | 124 | 130 | 124 | 139 | 111 | -20.1% | -31.1% |
| City of Fairfax | 27 | 29 | 50 | 36 | 40 | 52 | 51 | 59 | 44 | 35 | -20.5% | 29.6% |
| City of Falls Church | 17 | 12 | 18 | 18 | 21 | 12 | 13 | 19 | 10 | 0 | -100.0% | -100.0% |
| City of Manassas | - | 34 | 44 | 48 | 41 | 50 | 65 | 51 | 70 | 89 | 27.1% | 161.8% |
| City of Manassas Park | - | 8 | 15 | 19 | 12 | 12 | 12 | 12 | 11 | 13 | 18.2% | 62.5% |
| Northern Virginia Total | 2,022* | 1,978 | 2,020 | 2,171 | 2,242 | 2,472 | 2,581 | 2,540 | 2,428 | 1,957 | -19.4% | -3.2% |
| DC Metro Regional Total | 4,602* | 3,749* | 3,798* | 3,976* | 4,152* | 4,784 | 4,843* | 5,474 | 4,840 | 4,398 | -9.1% | -4.4% |
| National Parks in Region | -- | -- | -- | -- | -- | -- | 132 | -- | 110 | 96 | -12.7% | -- |
| Regional Total Adjusted | -- | -- | -- | -- | -- | -- | 4,975 | -- | 4,950 | 4,494 | -9.2% | -- |

*Regional totals do not include jurisdictions with missing data.

#District of Columbia percentage 2001-2005

Source: Jurisdictional contacts, see specific contact in Methodology

| Table 7: Total Traffic Crashes by Jurisdiction, 1996-2005 | | | | | | | | | | | | |
|--|----------------|---------------|----------------|----------------|----------------|---------------|---------------|---------------|---------------|---------------|----------------|--------------|
| | 1996 | 1997 | 1998 | 1999 | 2000 | 2001 | 2002 | 2003 | 2004 | 2005 | Percent Change | |
| | | | | | | | | | | | 2004-2005 | 1996-2005 |
| District of Columbia | - | 16,300 | - | - | - | 18,261 | 17,734 | 22,722 | 18,490 | 17,717 | -4.2% | 8.7% |
| Maryland | | | | | | | | | | | | |
| Montgomery County | 13,548 | 13,015 | 12,811 | 12,779 | 13,356 | 14,220 | 13,784 | 13,553 | 13,053 | 12,235 | -6.3% | -9.7% |
| Prince George's County | 15,695 | 14,792 | 14,430 | 14,226 | 15,332 | 16,023 | 16,602 | 16,885 | 15,901 | 16,349 | 2.8% | 4.2% |
| MD Regional Total | 29,243 | 27,807 | 27,241 | 27,005 | 28,688 | 30,243 | 30,386 | 30,438 | 28,954 | 28,584 | -1.3% | -2.3% |
| Virginia | | | | | | | | | | | | |
| Arlington County | 3,492 | 3,409 | 3,324 | 3,378 | 3,457 | 3,434 | 3,740 | 3,532 | 3,584 | 3,383 | -5.6% | -3.1% |
| Fairfax County | 15,513 | 15,453 | 16,476 | 17,913 | 19,082 | 19,636 | 18,866 | 19,040 | 18,728 | 18,363 | -1.9% | 18.4% |
| Loudoun County | 2,003 | 1,933 | 2,168 | 2,685 | 3,034 | 3,697 | 3,725 | 5,286 | 3,824 | 5,718 | 49.5% | 185.5% |
| Prince William County | 4,643 | 4,541 | 4,595 | 4,895 | 5,310 | 5,883 | 5,899 | 5,230 | 5,492 | 5,648 | 2.8% | 21.6% |
| City of Alexandria | 2,511 | 2,517 | 2,397 | 2,319 | 2,282 | 2,118 | 2,306 | 2,188 | 2,274 | 2,193 | -3.6% | -12.7% |
| City of Fairfax | 567 | 733 | 756 | 713 | 840 | 953 | 928 | 1,125 | 1,124 | 1,137 | 1.2% | 100.5% |
| City of Falls Church | 270 | 291 | 265 | 309 | 316 | 267 | 268 | 245 | 283 | 196 | -30.7% | -27.4% |
| City of Manassas | - | 668 | 733 | 689 | 787 | 902 | 846 | 813 | 923 | 948 | 2.7% | 38.2% |
| City of Manassas Park | - | 86 | 88 | 181 | 87 | 124 | 118 | 276 | 114 | 136 | 19.3% | 1.5% |
| Northern Virginia Total | 28,999* | 29,631 | 30,802 | 33,082 | 35,195 | 37,014 | 36,696 | 37,735 | 36,346 | 37,722 | 3.8% | 30.1% |
| DC Metro Regional Total | 58,242* | 73,738 | 58,043* | 60,087* | 63,883* | 85,518 | 84,816 | 90,895 | 83,790 | 84,023 | 0.3% | 44.3% |
| National Parks in Region | -- | -- | -- | -- | -- | -- | 2,978 | -- | 3,640 | 2,896 | -20.4% | -- |
| Regional Total Adjusted | -- | -- | -- | -- | -- | -- | 87,794 | 90,895 | 87,430 | 86,919 | -0.6% | -- |

*Regional totals do not include jurisdictions with missing data.

#District of Columbia percent change 1997-2005

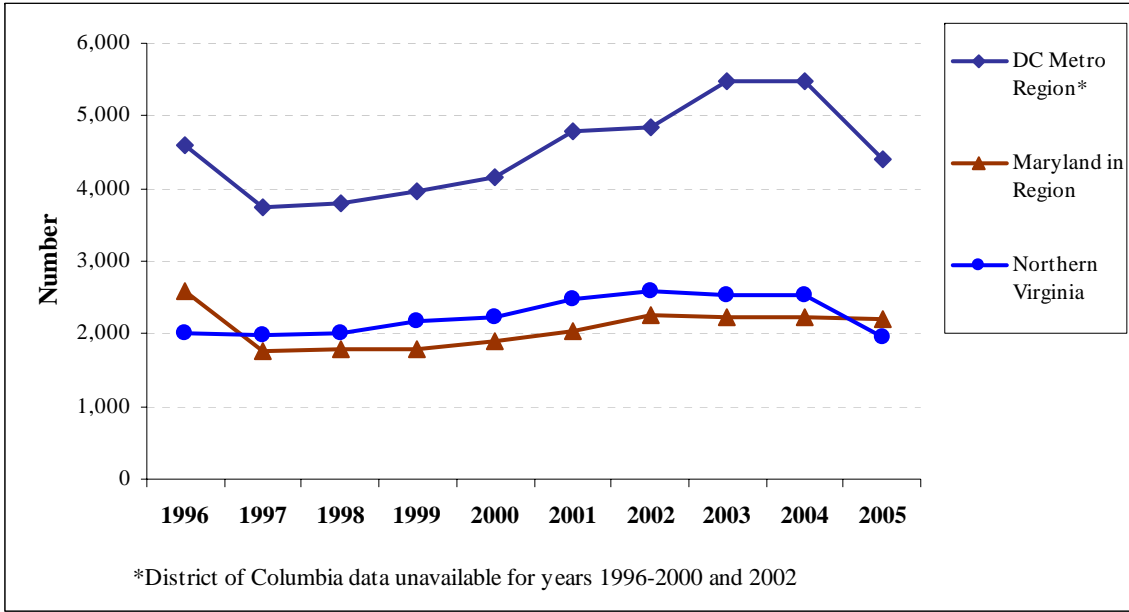


Figure 6: Number of Alcohol-related Traffic Crashes Over Time, By Region, 1996-2005

Figure 7: Total Number of Motor Vehicle Crashes Over Time, By Region, 1996-2005

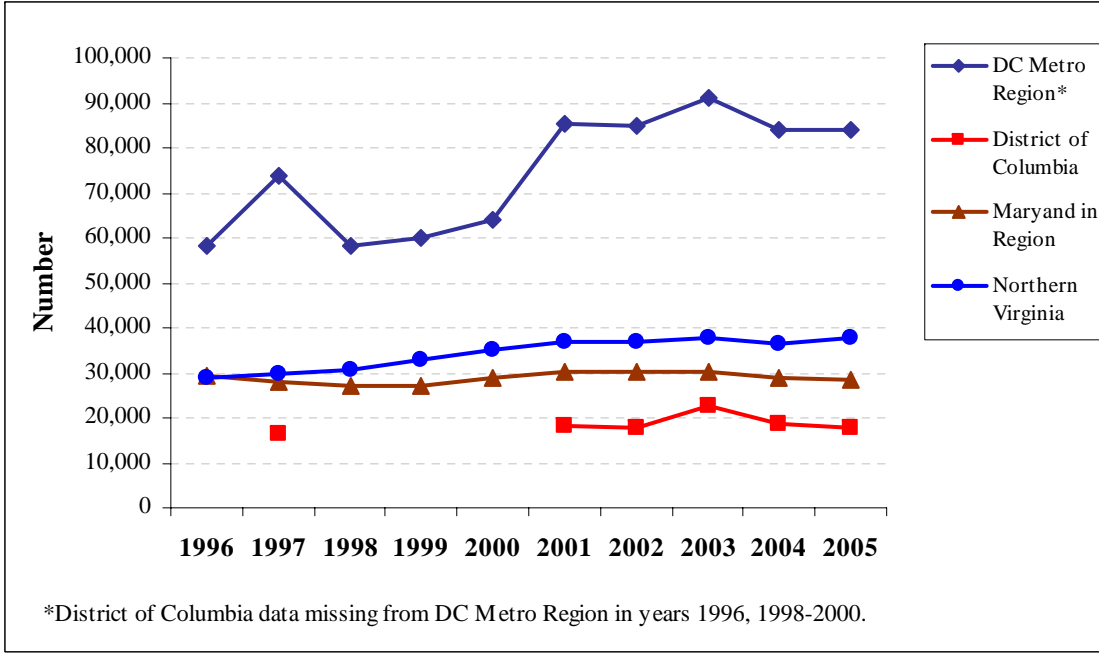


Table 8: Percentage of all Traffic Crashes that were Alcohol Related, 1996-2005

| | 1996 | 1997 | 1998 | 1999 | 2000 | 2001 | 2002 | 2003 | 2004 | 2005 |
|---------------------------------|--------------|--------------|-------------|-------------|-------------|-------------|--------------|-------------|-------------|-------------|
| District of Columbia | - | - | - | - | - | 1.6% | - | 3.1% | 3.8% | 1.3% |
| Maryland | | | | | | | | | | |
| Montgomery County | 8.3% | 6.2% | 6.0% | 7.2% | 6.7% | 5.1% | 7.0% | 7.5% | 7.7% | 8.0% |
| Prince George's County | 9.2% | 6.5% | 7.0% | 6.2% | 6.6% | 8.1% | 7.8% | 7.3% | 7.7% | 7.5% |
| MD Regional Total | 8.8% | 6.4% | 6.5% | 6.7% | 6.7% | 6.7% | 7.4% | 7.3% | 7.7% | 7.7% |
| Virginia | | | | | | | | | | |
| Arlington County | 8.7% | 8.2% | 8.2% | 9.1% | 9.8% | 10.3% | 9.6% | 9.2% | 9.0% | 6.6% |
| Fairfax County | 6.4% | 6.3% | 5.9% | 6.0% | 5.5% | 6.3% | 6.6% | 6.5% | 6.6% | 5.1% |
| Loudoun County | 8.6% | 7.1% | 7.2% | 6.2% | 5.5% | 6.0% | 7.0% | 4.7% | 6.4% | 3.2% |
| Prince William County | 7.5% | 7.9% | 7.7% | 7.8% | 8.1% | 7.1% | 7.5% | 8.8% | 8.4% | 6.5% |
| City of Alexandria | 6.4% | 6.0% | 5.8% | 5.5% | 6.0% | 5.9% | 5.6% | 5.7% | 5.5% | 5.1% |
| City of Fairfax | 4.8% | 4.0% | 6.6% | 5.0% | 4.8% | 5.5% | 5.5% | 5.2% | 5.2% | 3.1% |
| City of Falls Church | 6.3% | 4.1% | 6.8% | 5.8% | 6.6% | 4.5% | 4.9% | 7.8% | 6.7% | 0.0% |
| City of Manassas | - | 5.1% | 6.0% | 7.0% | 5.2% | 5.5% | 7.7% | 6.3% | 5.5% | 9.4% |
| City of Manassas Park | - | 9.3% | 17.0% | 10.5% | 13.8% | 9.7% | 10.2% | 4.3% | 10.5% | 9.6% |
| Northern Virginia Total | 7.0%^ | 6.7% | 6.6% | 6.6% | 6.4% | 6.7% | 7.0% | 6.7% | 7.0% | 5.2% |
| DC Metro Regional Total | 7.9%^ | 6.5%* | 6.5% | 6.6% | 6.5% | 5.6% | 7.2%* | 6.0% | 6.5% | 5.2% |
| National Parks in Region | -- | -- | -- | -- | -- | -- | 4.4% | -- | -- | -- |
| Regional Total Adjusted | -- | -- | -- | -- | -- | -- | 5.8% | 6.0% | 6.5% | 5.2% |

^Percentage not calculated for all jurisdictions due to missing data elements.
 *Percentage calculated excludes District of Columbia total crashes due to missing data on alcohol-related crashes.
 Source: Jurisdictional contacts, see specific contact in Methodology

Figure 8: Percentage of Total Crashes Due to Crashes Involving Impaired Drivers Over Time, By Region, 1996-2005

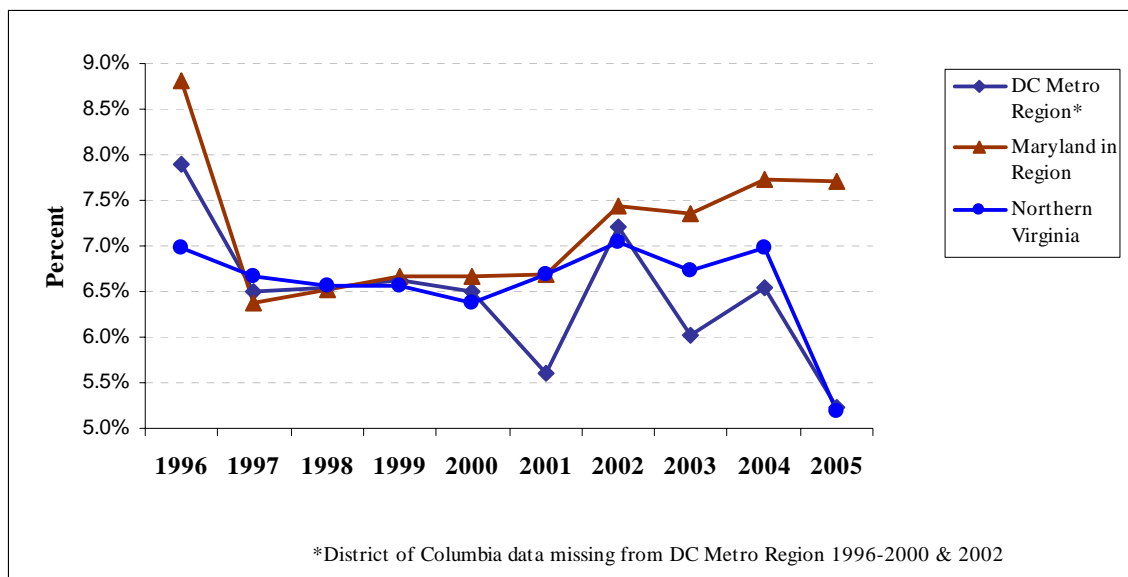


Table 9: SNAPSHOT! Motor Vehicle Crashes in 2005

| | Total Crashes | Alcohol Related Crashes | Percentage of Total Crashes that were Alcohol Related | Percentage Change Alcohol-related Crashes, 2004-2005 |
|---------------------------------|----------------------|--------------------------------|--|---|
| District of Columbia | 17,717 | 237 | 1.3% | -9.2% |
| Maryland | | | | |
| Montgomery County | 12,235 | 975 | 8.0% | -3.7% |
| Prince George's County | 16,349 | 1,229 | 7.5% | 7.9% |
| MD Regional Total | 28,584 | 2,204 | 7.7% | 2.5% |
| Virginia | | | | |
| Arlington County | 3,383 | 224 | 6.6% | -16.4% |
| Fairfax County | 18,363 | 935 | 5.1% | -22.0% |
| Loudoun County | 5,718 | 184 | 3.2% | -22.0% |
| Prince William County | 5,648 | 366 | 6.5% | -19.0% |
| City of Alexandria | 2,193 | 111 | 5.1% | -20.1% |
| City of Fairfax | 1,137 | 35 | 3.1% | -20.5% |
| City of Falls Church | 196 | 0 | 0.0% | -100.0% |
| City of Manassas | 948 | 89 | 9.4% | 27.1% |
| City of Manassas Park | 136 | 13 | 9.6% | 18.2% |
| Northern Virginia Total | 37,722 | 1,957 | 5.2% | -19.4% |
| DC Metro Regional Total | 84,023 | 4,398 | 5.2% | -9.1% |
| National Parks in Region | 3,640 | 110 | -- | -- |
| Regional Total Adjusted | 87,663 | 4,508 | 5.2% | 9.1% |

Source: Jurisdictional contacts, see specific contact in Methodology

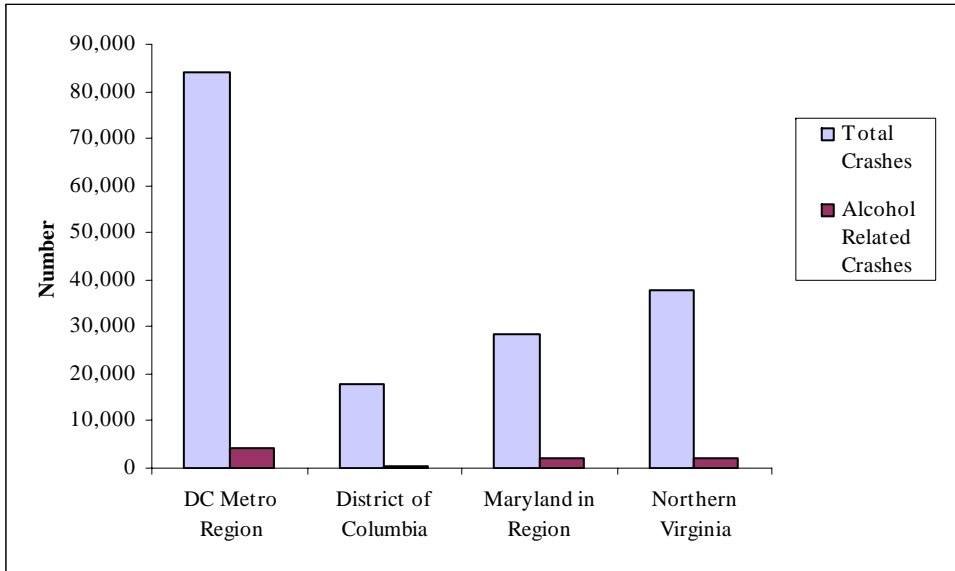
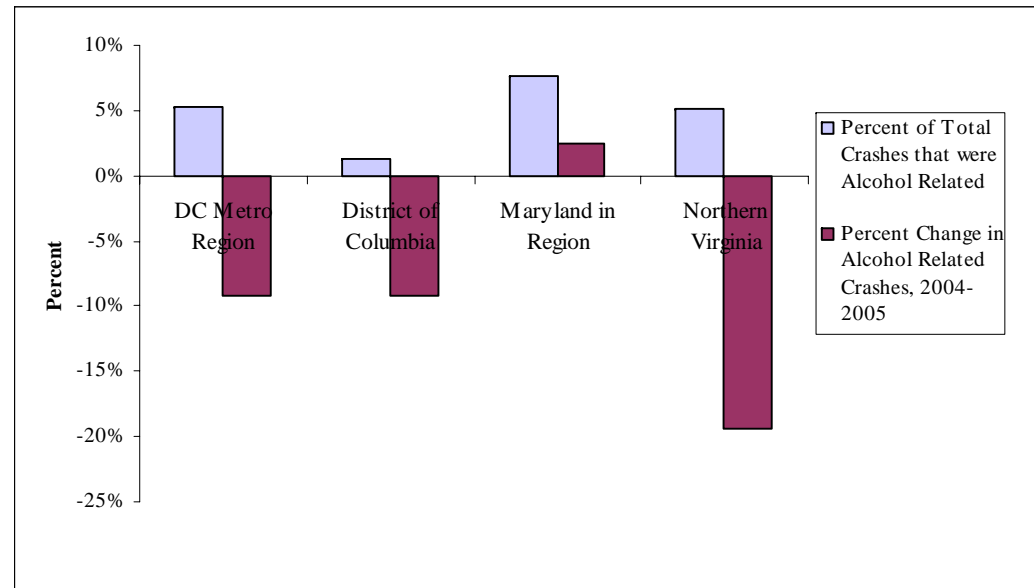


Figure 9A: SNAPSHOT! Number of Total and Alcohol-related Motor Vehicle Crashes, By Region, 2005

Figure 9B: SNAPSHOT! Percentage of Crashes: Alcohol-related and Change 2002-2005



TRAFFIC INJURIES

Washington Metro Region

There was a slight increase in the number of people injured in motor vehicle crashes, and a large decrease in the number of alcohol-related injuries in the Washington Metro region in 2005. Decreases in alcohol-related injuries between 2004 and 2005 were seen in every jurisdiction but one. In addition, the number of alcohol-related injuries in the majority of jurisdictions was in the double digits.

The decrease in alcohol-related injuries between 2004-2005 was seen in all but one jurisdiction.

Specifically, the number of reported alcohol-related injuries decreased by 1.4% in 2005 and total traffic injuries decreased by 0.4%. The percentage of traffic injuries related to alcohol impairment was 9.1%.

This year's increase in injuries from alcohol-related crashes represents a 34.8% decrease since 1996. The increase in the total number of motor vehicle injuries is the first since 2001.

Regional Jurisdictions

District of Columbia

The District of Columbia experienced a decrease in the total number of traffic injuries in 2004. Specifically, the total number of injuries decreased by 7.6%, which was the largest decrease seen in the region.

The District was unable to report the number of alcohol-related injuries for 2005.

Montgomery and Prince George's Counties, Maryland

Montgomery County saw a large decrease in alcohol-related injuries in 2005 (-60.1%). Prince George's County saw an increase (14.7%).

Montgomery County saw a 60% decrease in alcohol-related injuries in 2005.

For the Maryland Region, alcohol-related motor vehicle injuries decreased by a healthy 21.9% in the past year and overall injuries decreased by 5.0%. The percentage of injuries related to alcohol decreased from 9.6% in 2004 to 7.9% in 2005.

Since 1999, the area has seen impressive decreases in injuries due to alcohol-related crashes (-34.0%) as well as the number of overall injuries (-41.6%). The percentage of alcohol-related injuries in 2005 (7.9%) was lower than it's been in three years, but still higher than the period from 2000-2002.

Northern Virginia

Northern Virginia saw a significant decrease in the number of alcohol-related motor vehicle injuries as well as the percentage of injuries that were alcohol-related in 2005. Though every jurisdiction saw significant decreases, there was wide variation in the data reported by individual jurisdictions in Northern Virginia,.

Alcohol-related traffic injuries in Northern Virginia decreased 34.7% in 2005 compared with 2004. The percentage of all injuries related to alcohol decreased from 31.0% in 2004 to 7.5% in 2005. It is important to note that these aggregate regional totals are made up of jurisdictional rates that are widely different. For example, the number of alcohol-related injuries ranges from a decrease of 17.1% in the Prince William County to a decrease of 90% in the City of Falls Church.

There was a 35.6% decrease in alcohol-related injuries between 1999 and 2005. Total injuries were down 18.2% compared to 1999. The percentage of injuries related to alcohol (7.5%) is the lowest reported in 7 years.

Table 10: Alcohol-Related Traffic Injuries by Jurisdiction, 1999-2005

| | 1999 | 2000 | 2001 | 2002 | 2003 | 2004 | 2005 | Percent Change | |
|---------------------------------|---------------|---------------|--------------|--------------|--------------|--------------|--------------|----------------|---------------|
| | | | | | | | | 2004-2005 | 1999-2005 |
| District of Columbia | - | - | 92 | 213 | 576 | 81 | -- | -- | -- |
| Maryland | | | | | | | | | |
| Montgomery County | 637 | 463 | 292 | 377 | 660 | 626 | 250 | -60.1% | -60.8% |
| Prince George's County | 876 | 660 | 586 | 877 | 738 | 653 | 749 | 14.7% | -14.5% |
| MD Regional Total | 1,513 | 1,123 | 878 | 1,254 | 1,398 | 1,279 | 999 | -21.9% | -34.0% |
| Virginia | | | | | | | | | |
| Arlington County | 160 | 185 | 196 | 190 | 166 | 155 | 93 | -40.0% | -41.9% |
| Fairfax County | 815 | 663 | 770 | 827 | 803 | 759 | 500 | -34.1% | -38.7% |
| Loudoun County | 126 | 112 | 128 | 171 | 154 | 133 | 91 | -31.6% | -27.8% |
| Prince William County | 281 | 317 | 263 | 284 | 311 | 286 | 237 | -17.1% | -15.7% |
| City of Alexandria | 93 | 105 | 108 | 128 | 115 | 104 | 39 | -62.5% | -58.1% |
| City of Fairfax | 14 | 23 | 7 | 31 | 33 | 23 | 10 | -56.5% | -28.6% |
| City of Falls Church | 10 | 10 | 4 | 8 | 12 | 10 | 1 | -90.0% | -90.0% |
| City of Manassas | 28 | 20 | 28 | 37 | 30 | 44 | 19 | -56.8% | -32.1% |
| City of Manassas Park | 11 | 4 | 6 | 9 | 4 | 4 | 1 | -75.0% | -90.9% |
| Northern Virginia Total | 1,538 | 1,439 | 1,510 | 1,685 | 1,628 | 1,518 | 991 | -34.7% | -35.6% |
| DC Metro Regional Total | 3,051* | 2,562* | 2,480 | 3,152 | 3,602 | 2,878 | 1,990 | -30.9% | -34.8% |
| National Parks in Region | -- | -- | -- | 80 | -- | 68 | 32 | -52.9% | -- |
| Regional Total Adjusted | -- | -- | -- | 3,232 | -- | 2,946 | 2,022 | -31.4% | -- |

*Regional totals do not include jurisdictions with missing data.

#District of Columbia & DC Regional Total percentage change for 2001-2004

Source: Jurisdictional contacts, see specific contact in Methodology

Table 11: Total Traffic Injuries by Jurisdiction, 1996-2005

| | 1996 | 1997 | 1998 | 1999 | 2000 | 2001 | 2002 | 2003 | 2004 | 2005 | Percent Change | |
|---------------------------------|----------------|----------------|---------------|---------------|---------------|---------------|---------------|---------------|---------------|---------------|----------------|---------------|
| | | | | | | | | | | | 2004-2005 | 1999-2005 |
| District of Columbia | - | - | - | - | - | 9,253 | 5,650 | 4,748 | 5,421 | 5,007 | -7.6% | -41.4% |
| Maryland | | | | | | | | | | | | |
| Montgomery County | 9,527 | 8,740 | 8,148 | 8,182 | 8,271 | 5,981 | 8,733 | 8,069 | 7,642 | 6,870 | -10.1% | -27.9% |
| Prince George's County | 12,172 | 11,113 | 9,882 | 9,261 | 9,610 | 10,028 | 10,062 | 6,206 | 5,681 | 5,792 | 2.0% | -52.4% |
| MD Regional Total | 21,699 | 19,853 | 18,030 | 17,443 | 17,881 | 16,009 | 18,795 | 14,275 | 13,323 | 12,662 | -5.0% | -41.6% |
| Virginia | | | | | | | | | | | | |
| Arlington County | 2,024 | 1,929 | 1,955 | 1,946 | 1,894 | 1,966 | 1,658 | 1,274 | 1,408 | 1,220 | -13.4% | -39.7% |
| Fairfax County | 8,261 | 8,333 | 8,523 | 9,117 | 9,405 | 9,865 | 9,657 | 5,134 | 5,113 | 6,582 | 28.7% | -20.3% |
| Loudoun County | 1,132 | 1,102 | 1,129 | 1,347 | 1,419 | 1,643 | 1,654 | 1,278 | 899 | 1,206 | 34.1% | 6.5% |
| Prince William County | 3,004 | 2,922 | 2,840 | 2,984 | 3,050 | 3,316 | 3,246 | 2,767 | 2,847 | 2,586 | -9.2% | -13.9% |
| City of Alexandria | 1,371 | 1,323 | 1,380 | 1,407 | 1,309 | 1,382 | 1,395 | 320 | 769 | 853 | 10.9% | -37.8% |
| City of Fairfax | 280 | 389 | 368 | 332 | 366 | 415 | 383 | 266 | 196 | 205 | 4.6% | -26.8% |
| City of Falls Church | 142 | 128 | 112 | 146 | 152 | 97 | 118 | 42 | 196 | 180 | -8.2% | 26.8% |
| City of Manassas | - | 350 | 365 | 323 | 345 | 439 | 390 | 399 | 232 | 403 | 73.7% | - |
| City of Manassas Park | - | 41 | 20 | 80 | 52 | 56 | 45 | 67 | 33 | 23 | -30.3% | - |
| Northern Virginia Total | 16,214* | 16,517 | 16,692 | 17,682 | 17,992 | 19,179 | 18,546 | 11,547 | 11,693 | 13,258 | 13.4% | -18.2% |
| DC Metro Regional Total | 37,913* | 36,370* | 34,722 | 35,125 | 35,873 | 44,441 | 42,991 | 30,570 | 30,437 | 30,927 | 1.6% | -30.4% |
| National Parks in Region | -- | -- | -- | -- | -- | -- | 911 | -- | 747 | 703 | -5.9% | -- |
| Regional Total Adjusted | -- | -- | -- | -- | -- | -- | 43,902 | -- | 31,184 | 31,630 | 1.4% | -- |

*District of Columbia & Regional percentage change 2001-2004.

Source: Jurisdictional contacts, see specific contact in Methodology

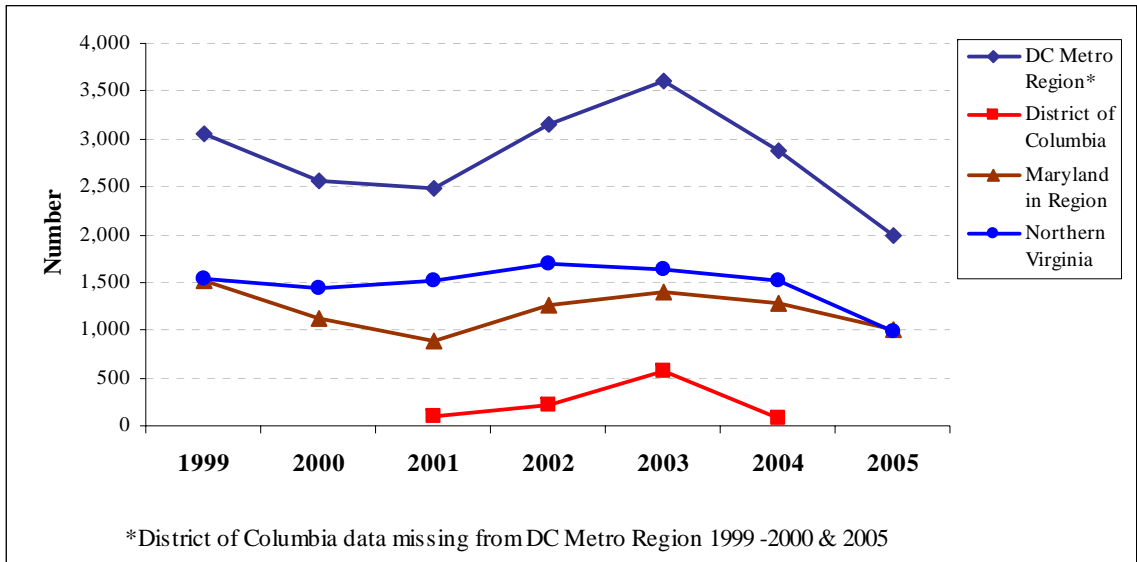


Figure 10: Number of Alcohol-Related Traffic Injuries Over Time, By Region, 1999-2005

Figure 11: Total Number of Motor Vehicle Injuries Over Time, By Region, 1999-2005

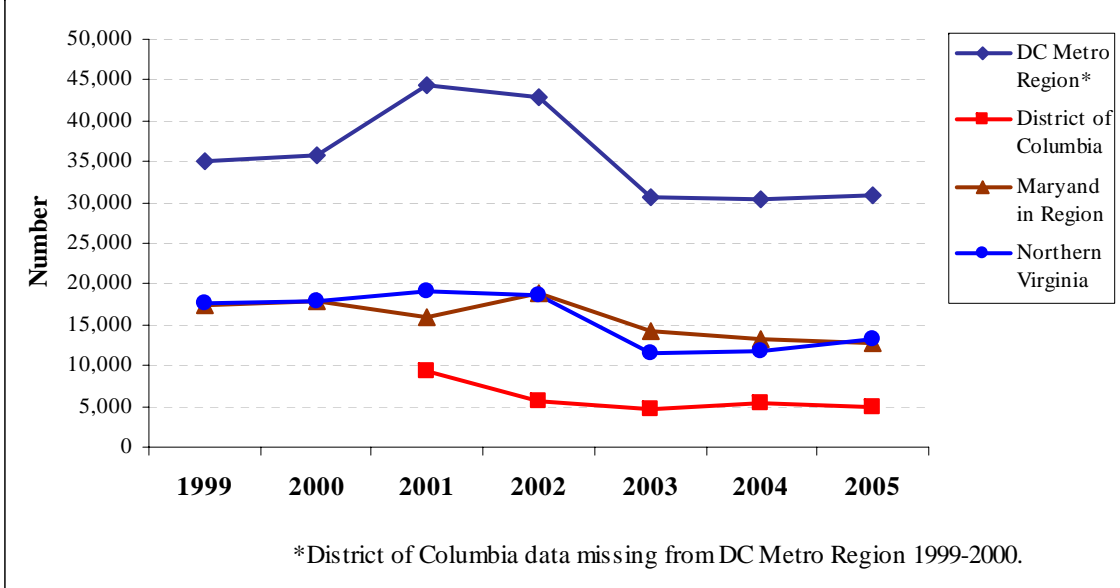


Table 12: Percentage of all Traffic Injuries that were Alcohol Related, 1999-2005

| | 1999 | 2000 | 2001 | 2002 | 2003 | 2004 | 2005 |
|---------------------------------|--------------|--------------|-------------|-------------|--------------|--------------|-------------|
| District of Columbia | - | - | 1.0% | 3.8% | 12.1% | 1.5% | -- |
| Maryland | | | | | | | |
| Montgomery County | 7.8% | 5.6% | 4.9% | 4.3% | 8.2% | 8.2% | 3.6% |
| Prince George's County | 9.5% | 6.9% | 5.8% | 8.7% | 11.9% | 11.5% | 12.9% |
| MD Regional Total | 8.7% | 6.3% | 5.5% | 6.7% | 9.8% | 9.6% | 7.9% |
| Virginia | | | | | | | |
| Arlington County | 8.2% | 9.8% | 10.0% | 11.5% | 13.0% | 11.0% | 7.6% |
| Fairfax County | 8.9% | 7.0% | 7.8% | 8.6% | 15.6% | 14.8% | 7.6% |
| Loudoun County | 9.4% | 7.9% | 7.8% | 10.3% | 12.1% | 14.8% | 7.5% |
| Prince William County | 9.4% | 10.4% | 7.9% | 8.7% | 11.2% | -- | -- |
| City of Alexandria | 6.6% | 8.0% | 7.8% | 9.2% | 35.9% | 13.5% | 4.6% |
| City of Fairfax | 4.2% | 6.3% | 1.7% | 8.1% | 12.4% | 11.7% | 4.9% |
| City of Falls Church | 6.8% | 6.6% | 4.1% | 6.8% | 28.6% | 5.1% | 0.6% |
| City of Manassas | 8.7% | 5.8% | 6.4% | 9.5% | 7.5% | 19.0% | 4.7% |
| City of Manassas Park | 13.8% | 7.7% | 10.7% | 20.0% | 6.0% | 12.1% | 4.3% |
| Northern Virginia Total | 8.7% | 8.0% | 7.9% | 9.1% | 14.1% | 13.0% | 7.5% |
| DC Metro Regional Total | 8.7%* | 7.1%* | 5.6% | 7.3% | 11.8% | 9.5% | 6.4% |
| National Parks in Region | -- | -- | -- | 7.4% | -- | 9.1% | 9.1% |
| Regional Total Adjusted | 8.7%* | 7.1%* | 5.6% | 7.4% | 11.8% | 8.7% | 8.7% |

*Regional totals do not include jurisdictions with missing data.

Source: Jurisdictional contacts, see specific contact in Methodology

Figure 12: Percentage of Total Injuries Due to Crashes Involving Impaired Drivers Over Time, By Region, 1999-2005

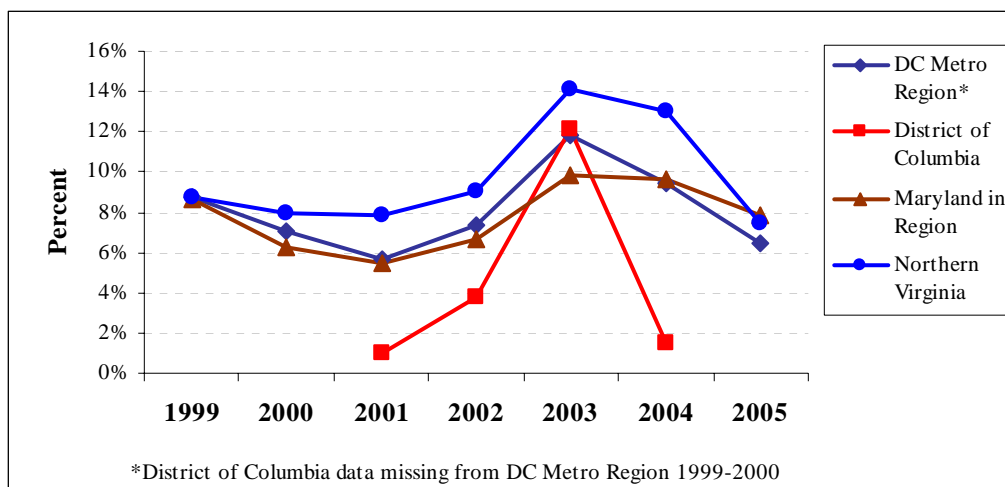
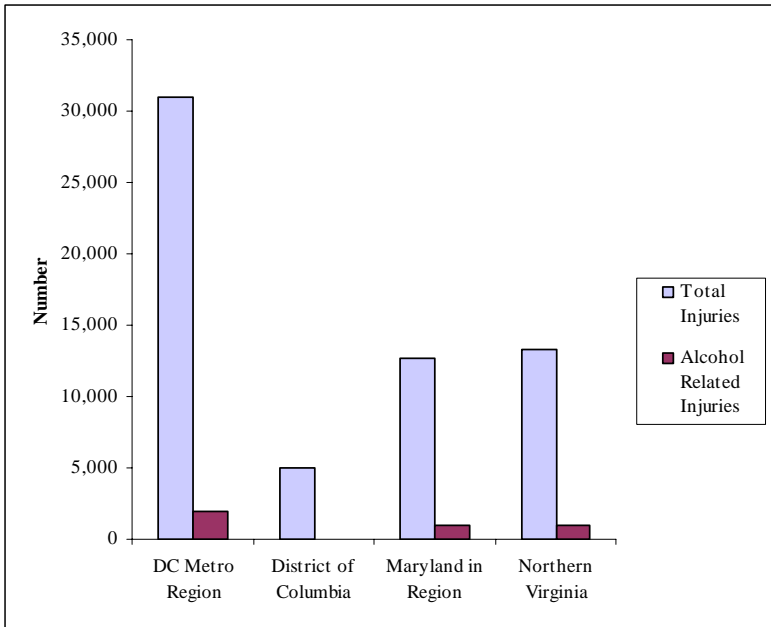


Table 13: SNAPSHOT! Motor Vehicle Injuries in 2005

| | Total Injuries | Alcohol Related Injuries | Percentage of Total Injuries that were Alcohol Related | Percent Change Alcohol Related Injuries, 2004-2005 |
|---------------------------------|-----------------------|---------------------------------|---|---|
| District of Columbia | 5,007 | -- | -- | -- |
| Maryland | | | | |
| Montgomery County | 6,870 | 250 | 3.6% | -60.1% |
| Prince George's County | 5,792 | 749 | 12.9% | 14.7% |
| MD Regional Total | 12,662 | 999 | 7.9% | -21.9% |
| Virginia | | | | |
| Arlington County | 1,220 | 93 | 7.6% | -40.0% |
| Fairfax County | 6,582 | 500 | 7.6% | -34.1% |
| Loudoun County | 1,206 | 91 | 7.5% | -31.6% |
| Prince William County | 2,586 | 237 | 9.2% | -17.1% |
| City of Alexandria | 853 | 39 | 4.6% | -62.5% |
| City of Fairfax | 205 | 10 | 4.9% | -56.5% |
| City of Falls Church | 180 | 1 | 0.6% | -90.0% |
| City of Manassas | 403 | 19 | 4.7% | -56.8% |
| City of Manassas Park | 23 | 1 | 4.3% | -75.0% |
| Northern Virginia Total | 13,258 | 991 | 7.5% | -34.7% |
| DC Metro Regional Total | 30,927 | 1,990 | 6.4% | -30.9% |
| National Parks in Region | 747 | 68 | 9.1% | -52.9% |
| Regional Total Adjusted | 31,674 | 2,058 | 8.7% | -31.4% |

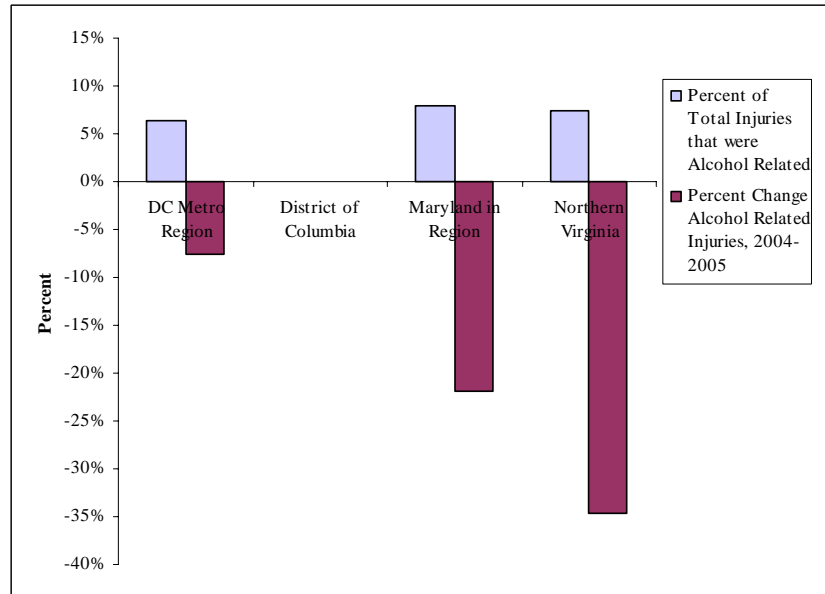
Source: Jurisdictional contacts, see specific contact in Methodology

^Percentage change calculation does not include 2003 or 2004 data for DC



**Figure 13A: SNAPSHOT!
Number of Total and Alcohol-Related Motor Vehicle Injuries, By Region, 2004**

**Figure 13B: SNAPSHOT!
Percentage of Injuries: Alcohol-related and change, 2003-2004**



TRAFFIC ARRESTS

Washington Metro Region

Alcohol-related arrests increased across the Washington Metro region in 2005. The number of alcohol-related arrests has remained fairly consistent for the past three years, but has trended lower over the past ten years.

Alcohol-related arrests increased slightly across the Washington Metro region in 2004.

The Washington Metro region reported 15,232 alcohol-related driving arrests this past year. This represents an increase of 2.0% compared with 2004. Though an improvement over last year, 2005 arrests were still significantly lower than a number of previous years that saw arrest rates in the high fifteen hundreds, and many of those years did not include Park Police data. Overall, the number of alcohol-related arrests are down 6.0% since 1996.

The arrest of people under the age of 21 years represents 2.5% of the overall arrests (362 of 15,232 arrests). This represents a decrease in the percentage of juvenile arrests over last year (2.4% in 2005 vs. 3.1% in 2004). Caution must be used in analysis of data on juveniles due to inconsistency in definitions, and the recording and maintenance of data within and between jurisdictions.

Regional Jurisdictions

District of Columbia

The District of Columbia was unable to provide 2005 data on juvenile drunk driving arrests. Though there were 36.7% fewer arrests in 2005 than in 1996 when reporting began, The District experienced an increase (1.5%) in the total number of drunk driving arrests over last year.

Montgomery and Prince George's Counties, Maryland

Prince Georges County reported a 10.6% increase in drunk driving arrests, the largest increase in the Washington Metro region. Montgomery County has a decrease in alcohol-related arrests.

Prince Georges County saw a 10.6% increase in alcohol-related driving arrests.

Combined, the Maryland counties saw a 0.7% increase in alcohol-related driving arrests compared with 2004. Arrests in the region have decreased 37.1% since 1996.

Northern Virginia

Northern Virginia reported a decrease in the number of alcohol-related driving arrests over the past year. Again the regional total does not tell the full story as individual jurisdictions had widely varying experiences. The percent change in arrests from 2003 to 2004 ranged from an extreme decrease in the City of Manassas Park (-43.7%) to a relatively high 13.3% increase in Loudoun County.

Northern VA regional data does not tell the full story as individual jurisdictions had widely varying experiences.

Northern Virginia saw a 1.3% increase in drunk driving arrests in the past year, though compared to 1996, arrests have increased 9.1%. Trends in individual VA counties vary widely, from a 54.9% increase in the City of Manassas Park to a 22.9% decrease in the City of Manassas.

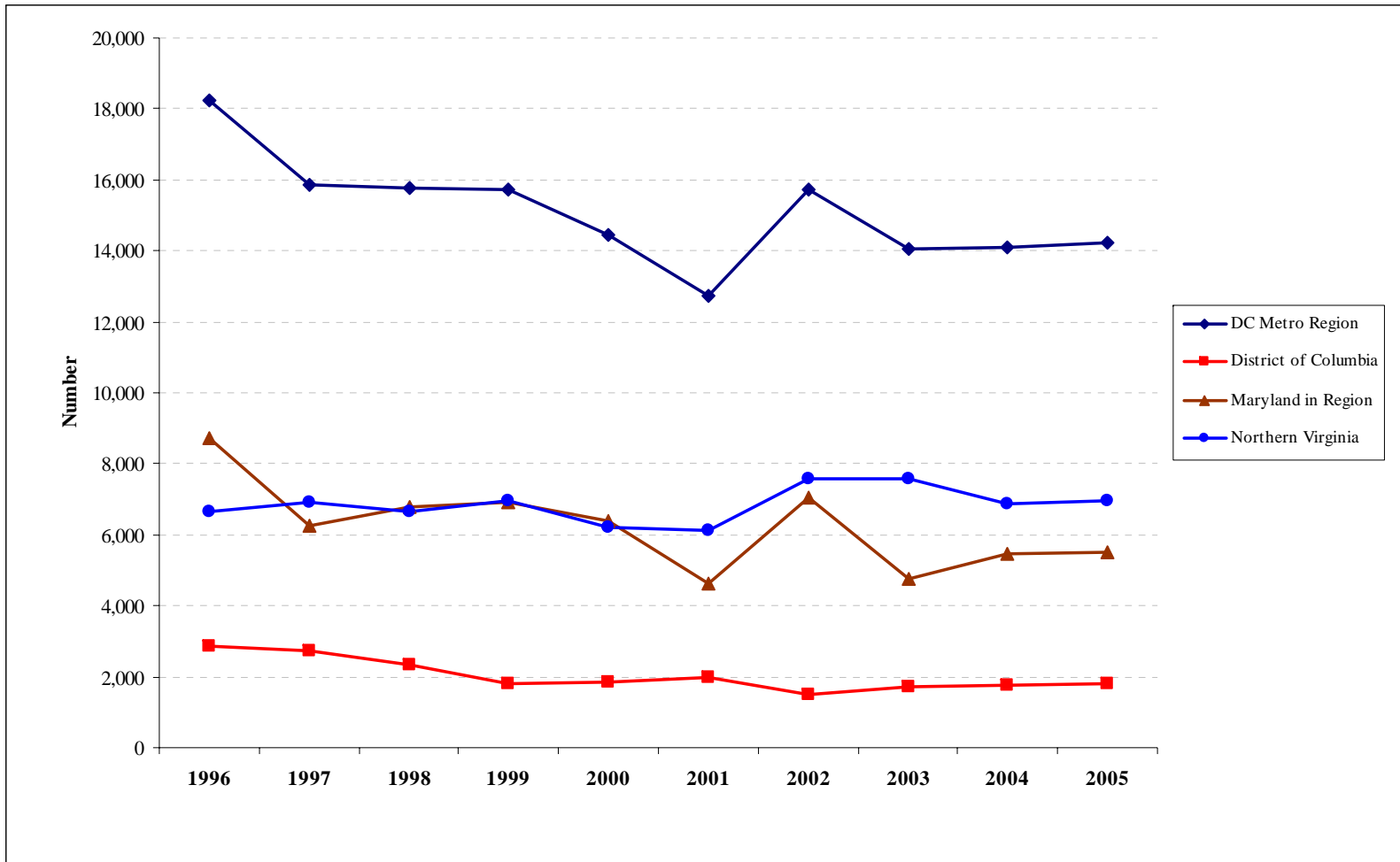
Table 14: Total Alcohol Related Driving Arrests by Jurisdiction, 1996-2005

| | 1996 | 1997 | 1998 | 1999 | 2000 | 2001 | 2002 | 2003 | 2004 | 2005 | Percent Change | |
|---------------------------------|----------------|---------------|---------------|---------------|---------------|---------------|---------------|---------------|---------------|---------------|----------------|---------------|
| | | | | | | | | | | | 2004-2005 | 1996-2005 |
| District of Columbia | 2,854 | 2,714 | 2,350 | 1,828 | 1,850 | 1,967 | 1,492 | 1,711 | 1,780 | 1,807 | 1.5% | -36.7% |
| Maryland | | | | | | | | | | | | |
| Montgomery County | 4,168 | 3,847 | 4,445 | 4,599 | 4,436 | 3,420 | 3,151 | 3,148 | 3,705 | 3,559 | -3.9% | -14.6% |
| Prince George's County | 4,553 | 2,400 | 2,321 | 2,315 | 1,933 | 1,199 | 3,877 | 1,598 | 1,743 | 1,927 | 10.6% | -57.7% |
| MD Regional Total | 8,721 | 6,247 | 6,766 | 6,914 | 6,369 | 4,619 | 7,028 | 4,746 | 5,448 | 5,486 | 0.7% | -37.1% |
| Virginia | | | | | | | | | | | | |
| Arlington County | 1,041 | 1,027 | 1,037 | 921 | 817 | 625 | 696 | 715 | 547 | 574 | 4.9% | -44.9% |
| Fairfax County | 3,075 | 3,033 | 2,754 | 2,858 | 2,475 | 2,451 | 2,969 | 3,350 | 2,861 | 3,015 | 5.4% | -2.0% |
| Loudoun County | 360 | 272 | 220 | 304 | 386 | 519 | 816 | 682 | 773 | 694 | -10.2% | 92.8% |
| Prince William County | 1,250 | 1,461 | 1,635 | 1,967 | 1,517 | 1,571 | 1,525 | 1,656 | 1,621 | 1,611 | -0.6% | 28.9% |
| Alexandria City | 455 | 420 | 394 | 346 | 293 | 343 | 427 | 476 | 394 | 425 | 7.9% | -6.6% |
| Fairfax City | 386 | 357 | 325 | 269 | 208 | 179 | 244 | 242 | 273 | 268 | -1.8% | -30.6% |
| Falls Church City | 74 | 54 | 53 | 47 | 84 | 74 | 45 | 40 | 40 | 34 | -15.0% | -54.1% |
| Manassas City | - | 214 | 209 | 208 | 349 | 276 | 348 | 298 | 284 | 219 | -22.9% | 2.3% |
| Manassas Park City | - | 77 | 46 | 45 | 92 | 107 | 155 | 126 | 71 | 110 | 54.9% | 42.9% |
| Northern Virginia Total | 6,641* | 6,915 | 6,673 | 6,965 | 6,221 | 6,145 | 7,225 | 7,585 | 6,864 | 6,950 | 1.3% | 9.1% |
| DC Metro Regional Total | 18,216* | 15,876 | 15,789 | 15,707 | 14,440 | 12,731 | 15,745 | 14,042 | 14,092 | 14,243 | 1.1% | -6.0% |
| National Parks in Region | -- | -- | -- | -- | -- | -- | 564 | -- | 839 | 989 | 17.9% | -- |
| Regional Total Adjusted | -- | -- | -- | -- | -- | -- | 16,309 | -- | 14,931 | 15,232 | 2.0% | -- |

*Regional totals do not include jurisdictions with missing data.

Source: Jurisdictional contacts, see specific contact in Methodology

Figure 14: Total Alcohol-related Arrest Trends, All Ages, By Region, 1994-2004



NOTE: Data on persons under the age of 21 years is not consistently recorded or maintained within and between jurisdictions; caution must be used in drawing conclusions based on this data.

Table 15: Total Alcohol Related Driving Arrests of Juveniles and Adults by Jurisdiction, 2000-2005

| | 2000 | | | 2001 | | | 2002 | | | 2003 | | | 2004 | | | 2005 | | |
|---------------------------------|------------|--------------|---------------|------------|--------------|---------------|------------|--------------|---------------|------------|--------------|---------------|------------|---------------|---------------|------------|---------------|---------------|
| | ≤ 18 years | > 18 years | Total | ≤ 18 years | > 18 years | Total | ≤ 18 years | > 18 years | Total | ≤ 18 years | > 18 years | Total | ≤ 18 years | > 18 years | Total | ≤ 18 years | > 18 years | Total |
| District of Columbia | | | 1,850 | 34 | 1,933 | 1,967 | 8 | 1,484 | 1,492 | 23 | 1,688 | 1,711 | 36 | 1,744 | 1,780 | -- | | 1,807 |
| Maryland | | | | | | | | | | | | | | | | | | |
| Montgomery County* | 73 | 4,363 | 4,436 | 46 | 3,374 | 3,420 | 56 | 3,095 | 3,151 | 41 | 3,107 | 3,148 | 363 | 3,342 | 3,705 | 285 | 3,274 | 3,559 |
| Prince George's County# | 10 | 1,923 | 1,933 | | | 1,199 | | | 3,877 | 7 | 1,591 | 1,598 | 2 | 1,741 | 1,743 | 3 | 1,924 | 1,927 |
| MD Regional Total | 83 | 6,286 | 6,369 | | | 4,619 | | | 7,028 | 48 | 4,698 | 4,746 | 365 | 5,083 | 5,448 | 288 | 5,198 | 5,486 |
| Virginia | | | | | | | | | | | | | | | | | | |
| Arlington County | 1 | 816 | 817 | 4 | 621 | 625 | 4 | 692 | 696 | 0 | 715 | 715 | 3 | 542 | 545 | 0 | 574 | 574 |
| Fairfax County | 41 | 2,434 | 2,475 | 32 | 2,419 | 2,451 | 49 | 2,920 | 2,969 | 54 | 3,296 | 3,350 | 20 | 2,841 | 2,861 | 28 | 2,987 | 3,015 |
| Loudoun County | 5 | 381 | 386 | 9 | 510 | 519 | 7 | 809 | 816 | -- | -- | 682 | 7 | 589 | 596 | 23 | 671 | 694 |
| Prince William County* | 26 | 1,491 | 1,517 | 31 | 1,540 | 1,571 | 19 | 1,506 | 1,525 | 16 | 1,640 | 1,656 | 18 | 1,903 | 1,921 | 12 | 1,599 | 1,611 |
| Alexandria City | 1 | 292 | 293 | 1 | 342 | 343 | 8 | 419 | 427 | 1 | 475 | 476 | 2 | 392 | 394 | 0 | 425 | 425 |
| Fairfax City | 2 | 206 | 208 | 1 | 178 | 179 | 4 | 240 | 244 | 3 | 239 | 242 | 1 | 272 | 273 | 3 | 265 | 268 |
| Falls Church City | 1 | 83 | 84 | 2 | 72 | 74 | 0 | 45 | 45 | 1 | 39 | 40 | 1 | 34 | 35 | 0 | 34 | 34 |
| Manassas City | 1 | 348 | 349 | 3 | 273 | 278 | 7 | 341 | 348 | 2 | 296 | 298 | 0 | 284 | 284 | 2 | 217 | 219 |
| Manassas Park City | 1 | 91 | 92 | 3 | 104 | 107 | 2 | 153 | 155 | 0 | 126 | 126 | 1 | 8 | 9 | 0 | 110 | 110 |
| Northern Virginia Total | 79 | 6,142 | 6,221 | 86 | 6,059 | 6,145 | 100 | 7,125 | 7,225 | 77 | 6,826 | 7,585 | 53 | 6,865 | 6,918 | 68 | 6,882 | 6,950 |
| DC Metro Regional Total^ | | | 14,440 | | | 12,731 | | | 15,745 | | | 14,042 | 454 | 13,692 | 14,146 | 356 | 12,080 | 14,243 |
| National Parks in Region | -- | -- | -- | -- | -- | -- | -- | -- | -- | -- | -- | -- | 8 | 831 | 839 | 6 | 983 | 989 |
| Regional Total Adjusted | | | 14,440 | | | 12,731 | | | 15,745 | | | 14,042 | 470 | 15,354 | 14,985 | 362 | 13,063 | 15,232 |

^DC Metro Regional totals for under and over age 18 years not included for years with missing juvenile data

*Montgomery County data for persons under the age of 21 years determined to be driver.

#Prince George's County data reflects number of arrests for persons under the age of 24 years.

Source: Jurisdictional contacts, see specific contact in Methodology.

IMPACT ON OUR YOUTH

The illegal use of alcohol by minors contributes significantly to juvenile delinquency problems, including driving while under the influence. Motor vehicle crashes kill and injure more young people than any other cause, and alcohol is a factor in many of these cases.

Several jurisdictions were unable to provide data on youth for this report. Results are presented for the Washington Metro region with the reminder that not all jurisdictions are represented.

16.1% of all youth traffic fatalities in the Washington Region were related to alcohol.

Fatalities

In the Washington Metro region there was an increase of three juvenile alcohol-related fatalities reported in 2005 (from 10 fatalities in 2004 to 13 in 2005). Over twenty-six percent (26%) of juvenile fatalities in 2005 were alcohol-related. This includes youth who were driving, passengers, and pedestrians.

Crashes, Injuries, and Arrests

In the Washington Metropolitan region, youth under the age of 21 were involved in 8.2% of all alcohol-related crashes, about the same as last year. Note that this does not include data from the District of Columbia and three Northern Virginia jurisdictions.

15.2% of alcohol-related traffic injuries occurred in people under age 21 in the Washington Metro region.

Data regarding youth injured in alcohol-related traffic injuries was unavailable from five jurisdictions. Of those reporting, 15.2% of injuries occurred in people under age 21 years; a significant increase over 2004 (5.3%).

With all but one jurisdiction reporting, 2.4% of drivers arrested in 2005 for alcohol impaired driving in the Region were under age, a slight decrease from 2004.

Table 16: Motor Vehicle Fatalities for Persons Under 21 Years of Age By Jurisdiction, 2004-2005

| | 2004 | | | 2005 | | | Percent Change, 2004-2005 | |
|---------------------------------|------------------|----------------------------|--|------------------|----------------------------|--|---------------------------|----------------------------|
| | Total Fatalities | Alcohol-related Fatalities | % of Total Juvenile Fatalities that were Alcohol-related | Total Fatalities | Alcohol-related Fatalities | % of Total Juvenile Fatalities that were Alcohol-related | Total Fatalities | Alcohol-related Fatalities |
| District of Columbia | 11 | 1 | 9.1% | 5 | 3 | 60.0% | -54.5% | 200.0% |
| Maryland | | | | | | | | |
| Montgomery County | 15 | 5 | | 6 | 1 | | | |
| Prince George's County | 22 | 2 | | 21 | 2 | | | |
| MD Regional Total | 37 | 7 | 18.9% | 27 | 3 | 11.1% | -27.0% | -57.1% |
| Virginia | | | | | | | | |
| Arlington County | 0 | 0 | | 2 | 0 | | | |
| Fairfax County | 12 | 2 | | 11 | 6 | | | |
| Loudoun County | -- | -- | | 2 | 0 | | | |
| Prince William County | 2 | -- | | 2 | 1 | | | |
| City of Alexandria | 0 | 0 | | 0 | 0 | | | |
| City of Fairfax | 0 | 0 | | 0 | 0 | | | |
| City of Falls Church | 0 | 0 | | 0 | 0 | | | |
| City of Manassas | 0 | 0 | | 0 | 0 | | | |
| City of Manassas Park | 0 | 0 | | 0 | 0 | | | |
| Northern Virginia Total | 14 | 2 | 14.3% | 17 | 7 | 41.2% | 21.4% | 250.0% |
| DC Metro Regional Total | 62 | 10 | 16.1% | 49 | 13 | 26.5% | -21.0% | 30.0% |
| National Parks in Region | 16 | 0 | 0.0% | 0 | 0 | 0.0% | -100.0% | 0.0% |
| Regional Total Adjusted | 78 | 10 | 12.8% | 49 | 13 | 26.5% | -37.2% | 30.0% |

^Regional Totals do not include jurisdictions with missing data

*Montgomery County data for persons under the age of 21 years determined to be driver and "at fault" for accident

#Prince George's County data represents persons under the age of 24 years

Source: Jurisdictional contacts, see specific contact in Methodology

Table 17: Alcohol-Related Motor Vehicle Injuries for Persons Under 21 Years of Age, 2004-2005

| | 2004 | | 2005 | |
|---------------------------------|--------------------|--|--------------------|--|
| | Number of Injuries | Percentage of Alcohol-related Injuries, All Ages | Number of Injuries | Percentage of Alcohol-related Injuries, All Ages |
| District of Columbia | -- | -- | -- | -- |
| Maryland | | | | |
| Montgomery County | 52 | | 43 | |
| Prince George's County | 33 | | 134 | |
| MD Regional Total | 85 | 6.6% | 177 | 17.7% |
| Virginia | | | | |
| Arlington County | -- | | -- | |
| Fairfax County | 58 | | 80 | |
| Loudoun County | -- | | -- | |
| Prince William County | -- | | 46 | |
| City of Alexandria | 3 | | - | |
| City of Fairfax | -- | | -- | |
| City of Falls Church | 2 | | - | |
| City of Manassas | -- | | -- | |
| City of Manassas Park | 1 | | - | |
| VA Regional Total | 64 | 4.2% | 126 | 12.7% |
| DC Metro Regional Total | 149 | 5.2% | 303 | 15.2% |
| National Parks in Region | 8 | 11.8% | - | 0.0% |
| Regional Total Adjusted | 157 | 5.3% | 303 | 15.0% |

+Data from 2002 only available at regional level. Completeness of data unknown.

^Regional Totals do not include jurisdictions with missing data.

*Montgomery County data for persons under the age of 21 years determined to be driver.

#Prince George's County data represents persons under the age of 24 years.

Source: Jurisdictional contacts, see specific contact in Methodology

Table 18: Motor Vehicle Arrests for Persons Under 21 Years of Age By Region, 2004-2005

| | 2004 | | 2005 | |
|---------------------------------|-------------------|---|-------------------|---|
| | Number of Arrests | Percentage of Alcohol-related Arrests, All Ages | Number of Arrests | Percentage of Alcohol-related Arrests, All Ages |
| District of Columbia | 36 | 2.0% | -- | -- |
| Maryland | | | | |
| Montgomery County | 363 | | 285 | |
| Prince George's County | 2 | | 3 | |
| MD Regional Total | 365 | 6.7% | 288 | 5.2% |
| Virginia | | | | |
| Arlington County | 3 | | 0 | |
| Fairfax County | 20 | | 28 | |
| Loudoun County | 7 | | 23 | |
| Prince William County* | 18 | | 12 | |
| City of Alexandria | 2 | | 0 | |
| City of Fairfax | 1 | | 3 | |
| City of Falls Church | 1 | | 0 | |
| City of Manassas | 0 | | 2 | |
| City of Manassas Park | 1 | | 0 | |
| VA Regional Total | 53 | 0.8% | 68 | 1.0% |
| DC Metro Regional Total | 454 | 3.2% | 356 | 2.5% |
| National Parks in Region | 8 | 1.0% | 6 | 0.6% |
| Regional Total Adjusted | 462 | 3.1% | 362 | 2.4% |

^Regional Totals do not include jurisdictions with missing data

*Montgomery County data for persons under the age of 21 years determined to be driver and "at fault" for accident

#Prince George's County data represents persons under the age of 24 years

Source: Jurisdictional contacts, see specific contact in Methodology

Table 19A: SNAPSHOT! Motor Vehicle Fatalities for Persons Under 21 Years of Age By Region, 2005

| | Total Juvenile Fatalities | Alcohol-related Fatalities | % of Total Juvenile Fatalities that were Alcohol-related | Percent Change Alcohol-related Juvenile Fatalities, 2003-2004 | Percentage of Alcohol-related Fatalities, All Ages |
|---------------------------------|----------------------------------|-----------------------------------|---|--|---|
| District of Columbia | 5 | 3 | 60.0% | -54.5% | 24.4% |
| Maryland | | | | | |
| Montgomery County | 6 | 1 | | | |
| Prince George's County | 21 | 2 | | | |
| MD Regional Total | 27 | 3 | 11.1% | -27.0% | 29.5% |
| Virginia | | | | | |
| Arlington County | 2 | 0 | | | |
| Fairfax County | 11 | 6 | | | |
| Loudoun County | 2 | 0 | | | |
| Prince William County* | 2 | 1 | | | |
| City of Alexandria | 0 | 0 | | | |
| City of Fairfax | 0 | 0 | | | |
| City of Falls Church | 0 | 0 | | | |
| City of Manassas | 0 | 0 | | | |
| City of Manassas Park | 0 | 0 | | | |
| Northern Virginia Total | 17 | 7 | 41.2% | 21.4% | 4.5% |
| DC Metro Regional Total | 49 | 13 | 26.5% | -21.0% | 8.8% |
| National Parks in Region | 0 | 0 | 0.0% | -- | |
| Regional Total Adjusted | 49 | 13 | 26.5% | -11.4% | 8.8% |

^Regional totals do not include jurisdictions with missing data.

*Montgomery County data for persons under the age of 21 years determined to be driver and "at fault" for accident

#Prince George's County data represents persons under the age of 24 years

Source: Jurisdictional contacts, see specific contact in Methodology

Table 19B: SNAPSHOT! Alcohol Related Crashes, Injuries, and Arrests for Persons Under 21 Years of Age By Region, 2005

| | Crashes | Percentage of Alcohol-related Crashes | Injuries | Percentage of Alcohol-related Injuries | Arrests | Percentage of Alcohol-related Arrests |
|---------------------------------|------------|---------------------------------------|------------|--|------------|---------------------------------------|
| District of Columbia | -- | -- | -- | -- | -- | -- |
| Maryland | | | | | | |
| Montgomery County | 162 | | 43 | | 285 | |
| Prince George's County | 322 | | 134 | | 3 | |
| MD Regional Total | 195 | 8.8% | 177 | 17.7% | 288 | 5.2% |
| Virginia | | | | | | |
| Arlington County | -- | | -- | | 0 | |
| Fairfax County | 122 | | 80 | | 28 | |
| Loudoun County | -- | | -- | | 23 | |
| Prince William County | 48 | | 46 | | 12 | |
| City of Alexandria | -- | | -- | | 0 | |
| City of Fairfax | 4 | | -- | | 3 | |
| City of Falls Church | 0 | | 0 | | 0 | |
| City of Manassas | 0 | | -- | | 2 | |
| City of Manassas Park | 1 | | 0 | | 0 | |
| Northern Virginia Total | 175 | 8.9% | 126 | 12.7% | 68 | 1.0% |
| DC Metro Regional Total | 370 | 8.4% | 303 | 15.2% | 356 | 2.5% |
| National Parks in Region | 0 | 0.0% | 0 | 0.0% | 6 | 0.6% |
| Regional Total Adjusted | 370 | 8.2% | 303 | 15.2% | 362 | 2.4% |

^Regional totals do not include jurisdictions with missing data.

*Montgomery County data for persons under the age of 21 years determined to be driver and "at fault" for accident

#Prince George's County data represents persons under the age of 24 years

Source: Jurisdictional contacts, see specific contact in Methodology

SUMMARY

The Washington Metro region has seen alcohol-related motor vehicle fatalities decrease for the second year in a row, this time by a significant 21.8%. Arrests for impaired driving increased in 2005, though not significantly. Decreasing or stable arrest rates are a continued concern. The percent of alcohol-related crashes decreased for the third straight year.

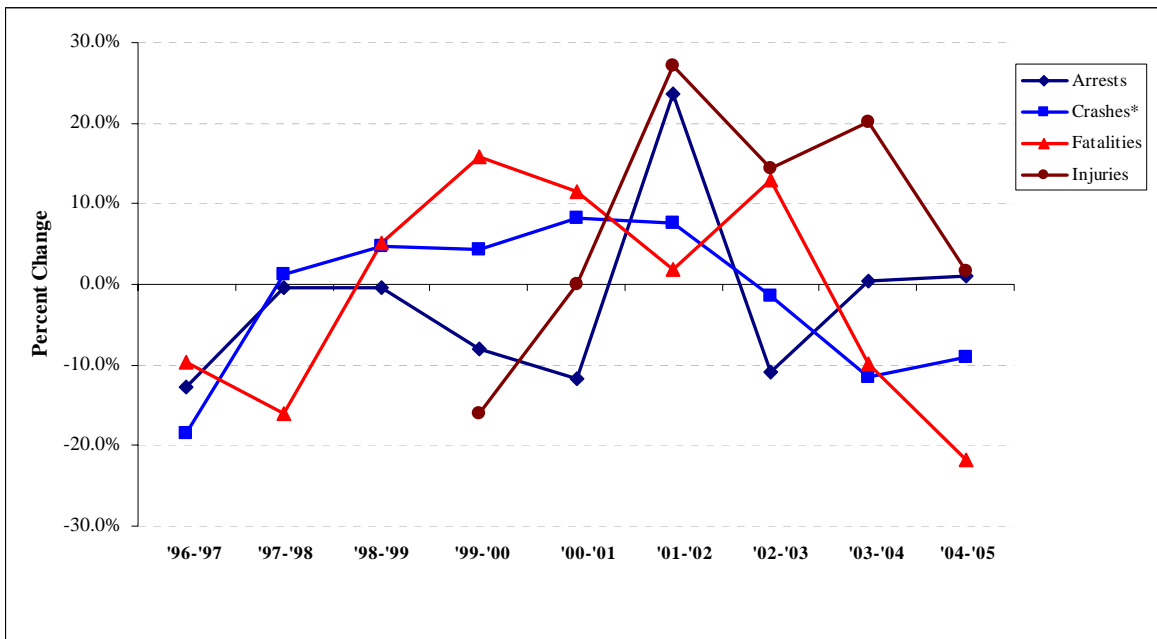
Table 20: DC Metro Region Percentage Change in Alcohol-related Incidents by Year, 1996-2005

| | '96-'97 | '97-'98 | '98-'99 | '99-'00 | '00-'01 | '01-'02 | '02-'03 | '03-'04 | '04-'05 |
|-------------------|---------|---------|---------|---------|---------|---------|---------|---------|---------|
| Arrests | -12.8% | -0.5% | -0.5% | -8.1% | -11.8% | 23.7% | -10.8% | 0.4% | 1.1% |
| Crashes | -18.5% | 1.3% | 4.7% | 4.4% | 8.3% | 7.7% | -1.4% | -11.6% | -9.1% |
| Fatalities | -9.7% | -16.1% | 5.1% | 15.9% | 11.6% | 1.9% | 13.0% | -9.8% | -21.8% |
| Injuries | - | - | - | -16.0% | -6.8%* | 27.1% | 14.3% | 20.1% | 1.6% |

*District of Columbia data excluded due to missing values.

Source: Jurisdictional contacts, see specific contact in Methodology

Figure 20: Washington Metro region Percentage Change in Alcohol-related Incidents by Year, 1996-2005



The District of Columbia saw a significant increase in alcohol-related fatalities in 2005, reversing gains made in 2004. The number of alcohol-related injuries decreased modestly, and arrests in the District increased for a third straight year.

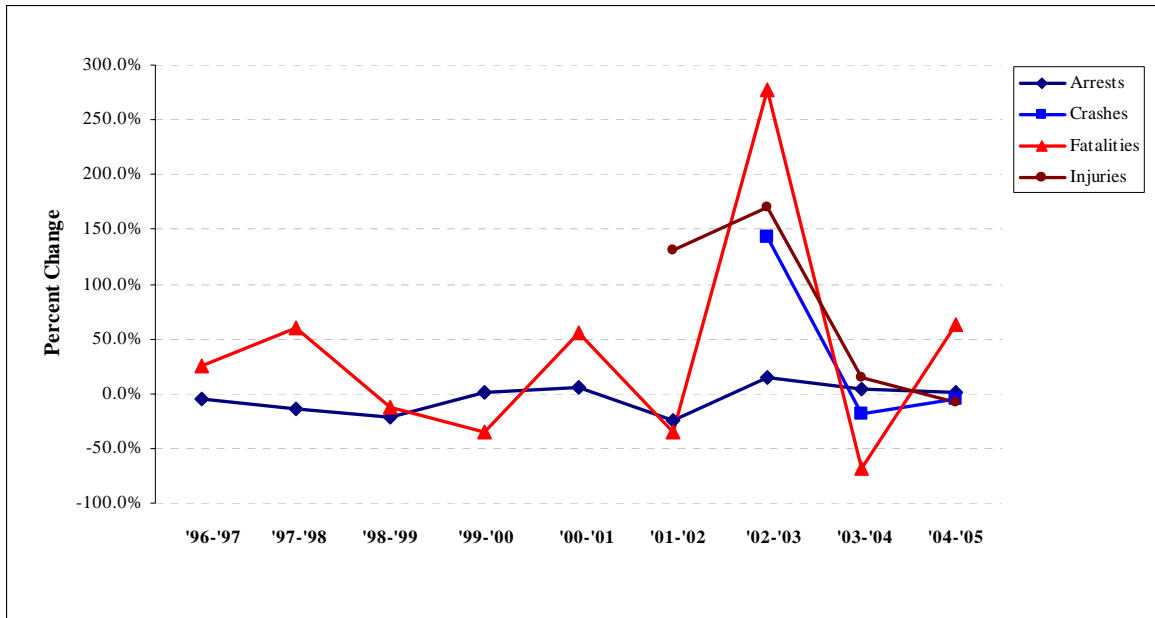
Table 21: District of Columbia Percentage Change in Alcohol-related Incidents by Year, 1996-2005

| | '96-'97 | '97-'98 | '98-'99 | '99-'00 | '00-'01 | '01-'02 | '02-'03 | '03-'04 | '04-'05 |
|-------------------|---------|---------|---------|---------|---------|---------|---------|---------|---------|
| Arrests | -4.9% | -13.4% | -22.2% | 1.2% | 6.3% | -24.1% | 14.7% | 4.0% | 1.5% |
| Crashes * | - | - | - | - | - | - | 143.2%* | -18.6% | -4.2% |
| Fatalities | 25.0% | 60.0% | -12.5% | -35.7% | 55.6% | -35.7% | 277.8% | -67.6% | 63.6% |
| Injuries* | - | - | - | - | - | 131.5% | 170.4% | 14.2% | -7.6% |

*Percentage change 2001 to 2005.

Source: Jurisdictional contacts, see specific contact in Methodology

Figure 21: District of Columbia Percentage Change in Alcohol-related Incidents by Year, 1996-2005



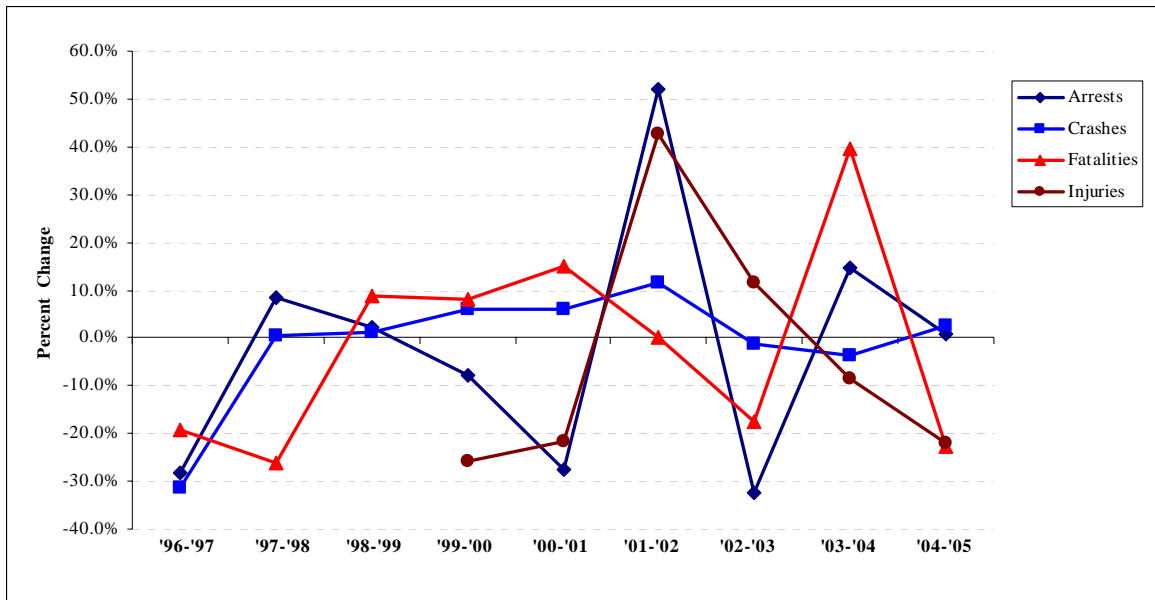
Montgomery and Prince George's counties in Maryland have seen extreme fluctuations in the number of arrests for impaired driving since 1997; This year saw a small increase in arrests. The number of fatalities and injuries have also fluctuated substantially over the past eight years. In 2005 fatalities were down 22.6% and injuries were down 21.9%.

Table 22: Montgomery and Prince George's Counties, Maryland, Percentage Change in Alcohol-related Incidents by Year, 1996-2005

| | '96-'97 | '97-'98 | '98-'99 | '99-'00 | '00-'01 | '01-'02 | '02-'03 | '03-'04 | '04-'05 |
|-------------------|---------|---------|---------|---------|---------|---------|---------|---------|---------|
| Arrests | -28.4% | 8.3% | 2.2% | -7.9% | -27.5% | 52.2% | -32.5% | 14.8% | 0.7% |
| Crashes | -31.4% | 0.4% | 1.3% | 6.0% | 6.0% | 11.7% | -1.1% | -3.8% | 2.5% |
| Fatalities | -19.3% | -26.1% | 8.8% | 8.1% | 15.0% | 0.0% | -17.4% | 39.5% | -22.6% |
| Injuries | - | - | - | -25.8% | -21.8% | 42.8% | 11.5% | -8.5% | -21.9% |

Source: Jurisdictional contacts, see specific contact in Methodology

Figure 22: Montgomery and Prince George's Counties, Maryland, Percentage Change in Alcohol-related Incidents by Year, 1996-2005



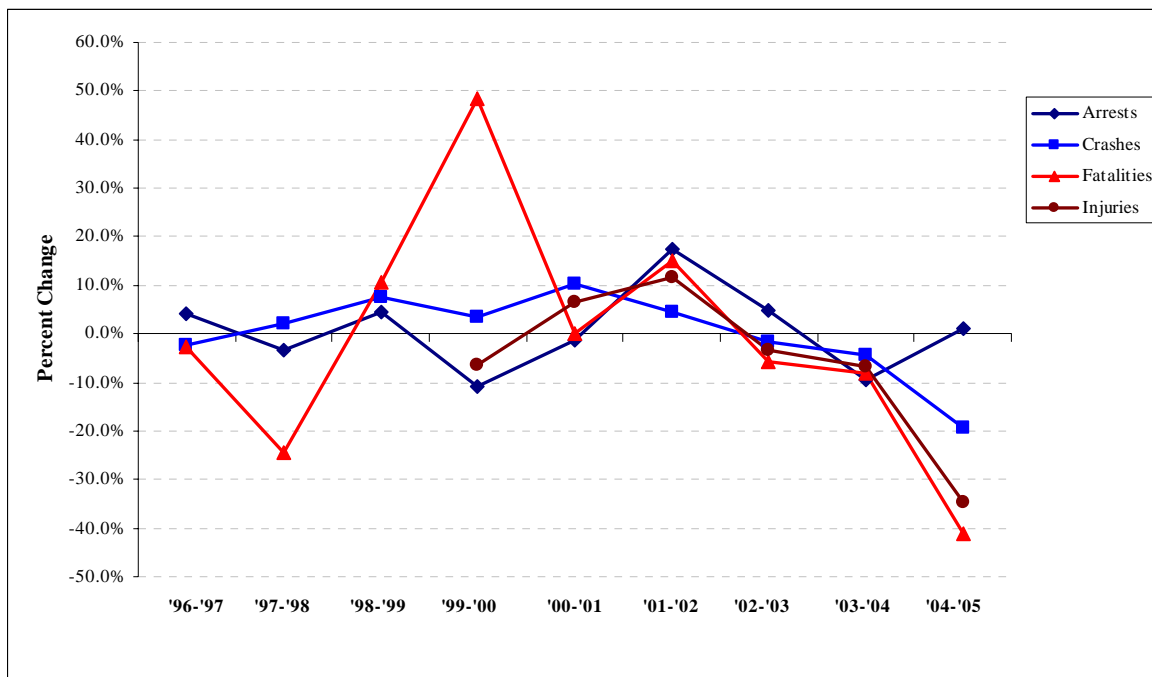
Northern Virginia reported a small increase in the number of arrests between 2004 and 2005. The number of alcohol-related crashes, injuries, and fatalities all dropped substantially.

Table 23: Northern Virginia Percentage Change in Alcohol-related Incidents by Year, 1996-2005

| | '96-'97 | '97-'98 | '98-'99 | '99-'00 | '00-'01 | '01-'02 | '02-'03 | '03-'04 | '04-'05 |
|-------------------|---------|---------|---------|---------|---------|---------|---------|---------|---------|
| Arrests | 4.1% | -3.5% | 4.4% | -10.7% | -1.2% | 17.6% | 5.0% | -9.5% | 1.3% |
| Crashes | -2.2% | 2.1% | 7.5% | 3.3% | 10.3% | 4.4% | -1.6% | -4.4% | -19.4% |
| Fatalities | -2.6% | -24.3% | 10.7% | 48.4% | 0.0% | 15.2% | -5.7% | -8.0% | -41.3% |
| Injuries | - | - | - | -6.4% | 6.4% | 11.6% | -3.4% | -6.8% | -34.7% |

Source: Jurisdictional contacts, see specific contact in Methodology

Figure 23: Northern Virginia Percentage Change in Alcohol-related Incidents by Year, 1996-2005



FINAL COMMENTS

It is encouraging to report that the number of alcohol-related crashes and fatalities in the Washington Metro region has decreased substantially for the second straight year. Unfortunately, we must also report that twenty-six percent of juvenile fatalities in 2005 were alcohol-related.

Efforts continue both nationwide and locally to curb alcohol-related motor vehicle crashes, injuries, and fatalities. Although the relationship between drunk driving arrests and alcohol-related fatalities, injuries, and crashes is not clearly understood, the Washington Metro region did report a small increase in the number of impaired driving arrests. It is important to note that the number of arrests in the region this year was down significantly from the high-water mark of 2002. Regarding alcohol-related fatalities, the Washington Metro region saw an impressive decrease, there were significant differences within the region; the District of Columbia reported a 63.6% increase in alcohol-related fatalities, while the Maryland Region reported a decrease of 22.6%, and the Virginia Region reported a decrease of 41.3%.

In 2005, 8.8% of all alcohol-related motor vehicle fatalities occurred in people under 21 years of age and alcohol-related fatalities represented 26.5% of all traffic fatalities for persons under 21 – up significantly from 2004.

ACKNOWLEDGEMENTS

The Institute for Community Health at Virginia Tech acknowledges that a report of this magnitude requires the assistance of many. We wish to thank the following individuals and organizations for their assistance with, and contributions to, this *How Safe Are Our Roads?* Report:

Kurt Erickson and Apryl Lomax
Washington Regional Alcohol Program

Nancy Rea
Metropolitan Washington Council on Governments

Nationally, Alcohol-related traffic fatalities have decreased by 44 percent since 1980. Still today, someone dies about every 30 minutes in an alcohol-related crash.

From the Washington Metro region jurisdictions

District of Columbia

Yusuf Aden & Carole Lewis, District Department of Transportation
Mr. Arthur Pettiford, United States Park Police

Maryland

Ms. Dana Gigliotti, Prince George's County Police Department
Ms. Felicia Hobbs, Montgomery County Department of Police
Mr. Tim Kerns, University of Maryland

Northern Virginia

Mr. Dean Montanye, Arlington County Police Dept.
Mr. Jerry Stemler, Fairfax County Police Dept.
Lt. Rudy Landon, Loudoun County Sheriff's Office
Sgt. Bobby Bardon & Sgt. Dennis Mangan, Prince William County Police Dept.
Captain David Huchler & Deputy Chief Blaine Corle, City of Alexandria Police Dept.
Lt. M.A. Rizzo, City of Fairfax Police Dept.
Capt. Matthew Sergent, City of Falls Church Police Dept.
Sgt. Brian Larkin, City of Manassas Police Dept.
Lt. Karen Barton, City of Manassas Park Police Dept.

Definition of Terms

Terms Related to the Data

Alcohol-Related Crash – A motor vehicle crash is considered to alcohol-related if at least one driver or non-occupant (such as a pedestrian or pedalcyclist) involved in the crash is determined to have a Blood Alcohol Concentration (BAC) of 0.01 gram per deciliter (G/dl) or higher.

Alcohol-Related Fatality – Any fatality that occurs in an alcohol-related crash.

Alcohol-Related Injury – Any injury that occurs in an alcohol-related crash.

Percent of Fatalities that are Alcohol-Related - These percentages represent the ratio of alcohol-related fatalities to the number of total fatalities as expressed below:

$$\frac{\text{Alcohol-Related Fatalities (year)}}{\text{Total Fatalities (year)}} \times 100$$

Percent of Crashes that are Alcohol-Related - These percentages represent the ratio of alcohol-related crashes to the number of total crashes as expressed below:

$$\frac{\text{Alcohol-Related Crashes (year)}}{\text{Total Crashes (year)}} \times 100$$

Percent of Injuries that are Alcohol-Related - These percentages represent the ratio of alcohol-related injuries to the number of total injuries as expressed below:

$$\frac{\text{Alcohol-Related Injuries (year)}}{\text{Total Injuries (year)}} \times 100$$

Percent Change – This report contains much discussion of percentage change. This analysis is included to show fluctuations from year to year and to provide an added perspective. Percent change is calculated by taking the number (of fatalities, crashes, injuries, arrests, etc) for the current year, minus the number for the previous year, then dividing the difference by the number for the previous year and multiplying the dividend by 100.

General Terms

Blood Alcohol Concentration (BAC) - Blood Alcohol Concentration is the amount of alcohol in the bloodstream. It is measured in percentages. For instance, having a BAC of 0.10 percent means that a person has 1 part alcohol per 1,000 parts blood in the body. BAC can be measured by breath, blood, or urine tests. BAC measurement is especially important for determining the role of alcohol in motor vehicle related fatalities, crashes and injuries.

Drunk Driving - A general reference to those criminal cases that are called DUI, DWI, OUI, OWI, DUUI, DWAI, or other acronyms. They generally describe two types of cases: first, where the driver is sufficiently impaired by alcohol, drugs, or a combination of the two, that the driver cannot drive safely. Second, "drunk driving" relates to those cases where someone is above that state's legal limit, usually .08, no matter how safely the person is driving.

Juvenile – A person under the age of 21 years, or as defined in the local jurisdiction as under the age of majority. It is important to note that for purposes of this report, the age a person is defined is not consistent between local jurisdictions.

National Highway Traffic Safety Administration (NHTSA) - The agency within the United States Department of Transportation that administers traffic safety programs. NHTSA's duties include funding studies on field sobriety tests and training law enforcement officers in the administration of the standardized field sobriety test battery.

U.S. Census Bureau – A bureau of the Commerce Department responsible for taking the census and providing demographic information and analyses about the population of the United States

Vehicle – A motor vehicle, car, truck, motorcycle. In some states, a DUI, DWI or drunk driving conviction can result from driving a bicycle, riding a horse, driving a snowmobile, or even a motorized wheelchair.

Washington D.C. Metropolitan Region – For purposes of this report, the Washington D.C. Metropolitan Region consists of 12 jurisdictions within the District of Columbia, Maryland and Northern Virginia. For a listing of the jurisdictions, refer to page 5.

How Safe Are Our Roads?

Prepared by
Heidi Sung

Institute for Community Health
Virginia Tech
School of Public and International Affairs
200 Architecture Annex
Blacksburg, Virginia 24061

540-231-2451