

**Activity Cluster Update**  
Planning Directors Technical Advisory Committee  
March 17, 2006

**Activity Cluster Overview**

- Employment and household totals for Activity Clusters were calculated using TAZs immediately adjacent to Activity Centers (see Figure 1).
- Cluster totals were based on Round 6.2 data. However, a summation of the Round 6.2 TAZ-level data produces several discrepancies between the totals in the *Metropolitan Washington Regional Activity Centers: A Tool for Linking Land Use and Transportation Planning* (see graphs).
- 2000 and 2025 were the years used in the study.

**Activity Cluster Update: Round 7**

- The Activity Centers report classified Clusters using the following categories (based on Round 6.2 for 2025):
  - More than 200,000 Jobs in 2025
  - 150,000 – 199,999 Jobs in 2025
  - 100,000 – 149,999 Jobs in 2025
  - 50,000 – 99,999 Jobs in 2025
  - 25,000 – 49,999 Jobs in 2025
- Using Round 7 data, seven Clusters changed classifications for the 2025 horizon year because of gains in employment projections (see Figure 2):
  - In Maryland:
    - Frederick Area
    - Germantown / Clarksburg
    - Gaithersburg / Life Sciences Center
    - New Carrollton / Largo
  - In Virginia:
    - Dulles Corridor
    - Tysons Corner
    - Fairfax Center / City of Fairfax / GMU
- For the 2030 horizon year, and two additional Clusters would change classifications based on Round 7 employment projections (see Figure 3):
  - In Maryland:
    - Greenbelt / College Park / White Oak Area
  - In Virginia:
    - Pentagon / Reagan Airport / Alexandria Area

## **Activity Cluster Update**

Planning Directors Technical Advisory Committee

March 17, 2006

- Based on staff's initial analysis of Activity Centers and Local Centers using Round 7 employment data, one Local Center, Konterra, would qualify as an Activity Center based on the existing criteria. If this center were grouped with the Greenbelt / College Park / White Oak Area cluster, the amount of employment for the cluster would increase by 42,805 in 2025 and 51,735 in 2030 (see Figure 4). The cluster would move up in classification in 2025 and 2030.

Figure 1

# Activity Cluster Boundaries

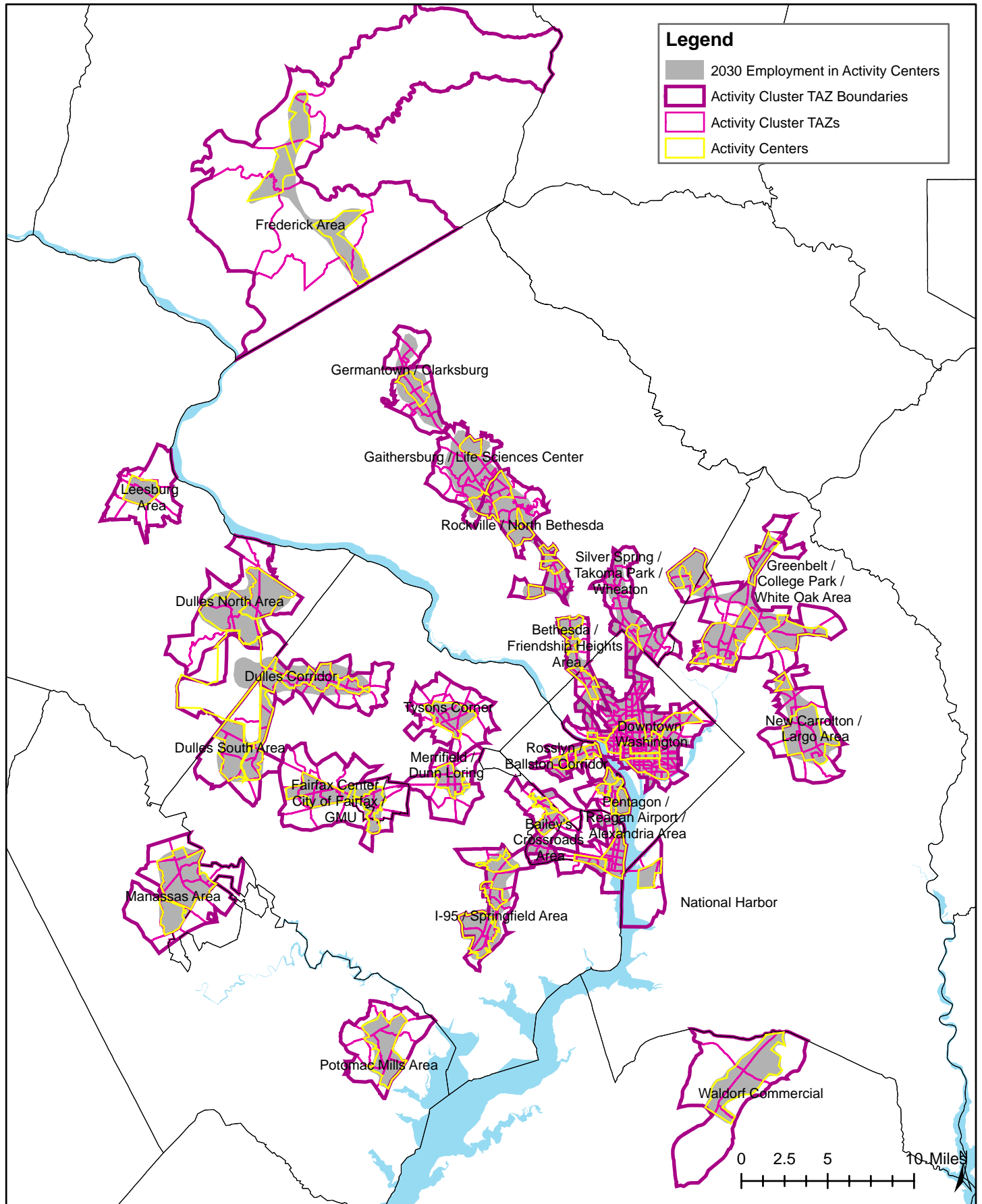


Figure 2

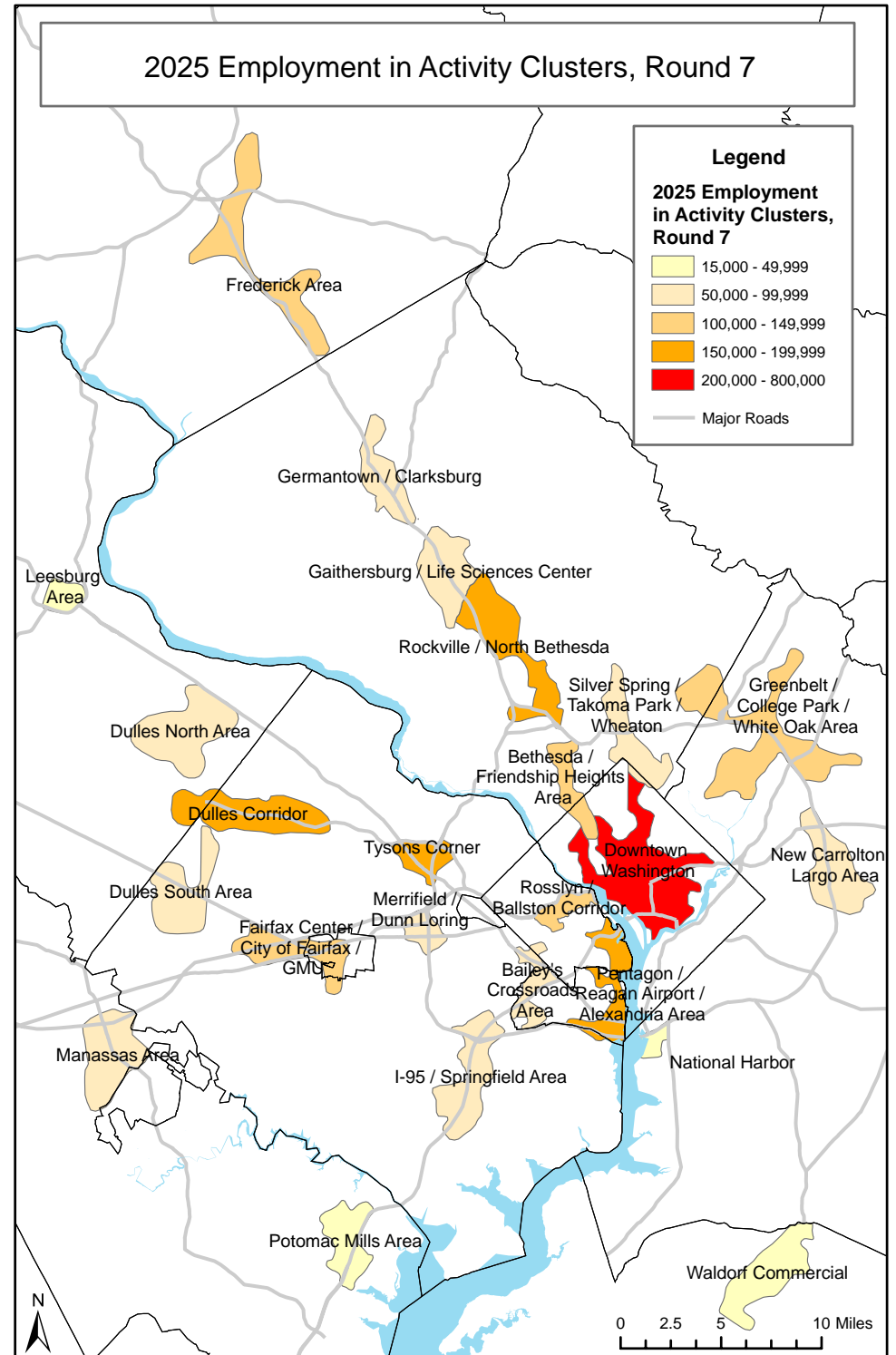
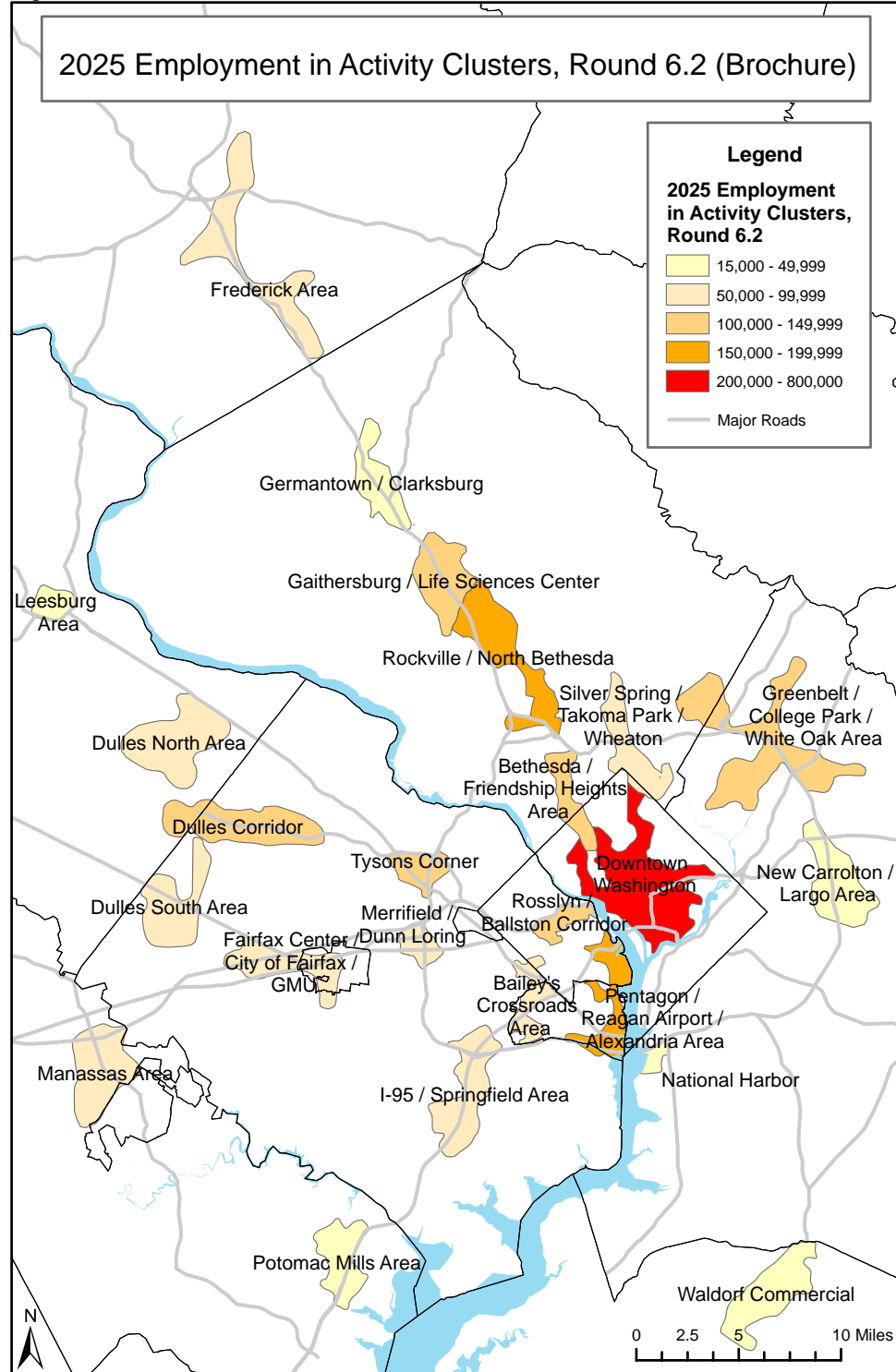
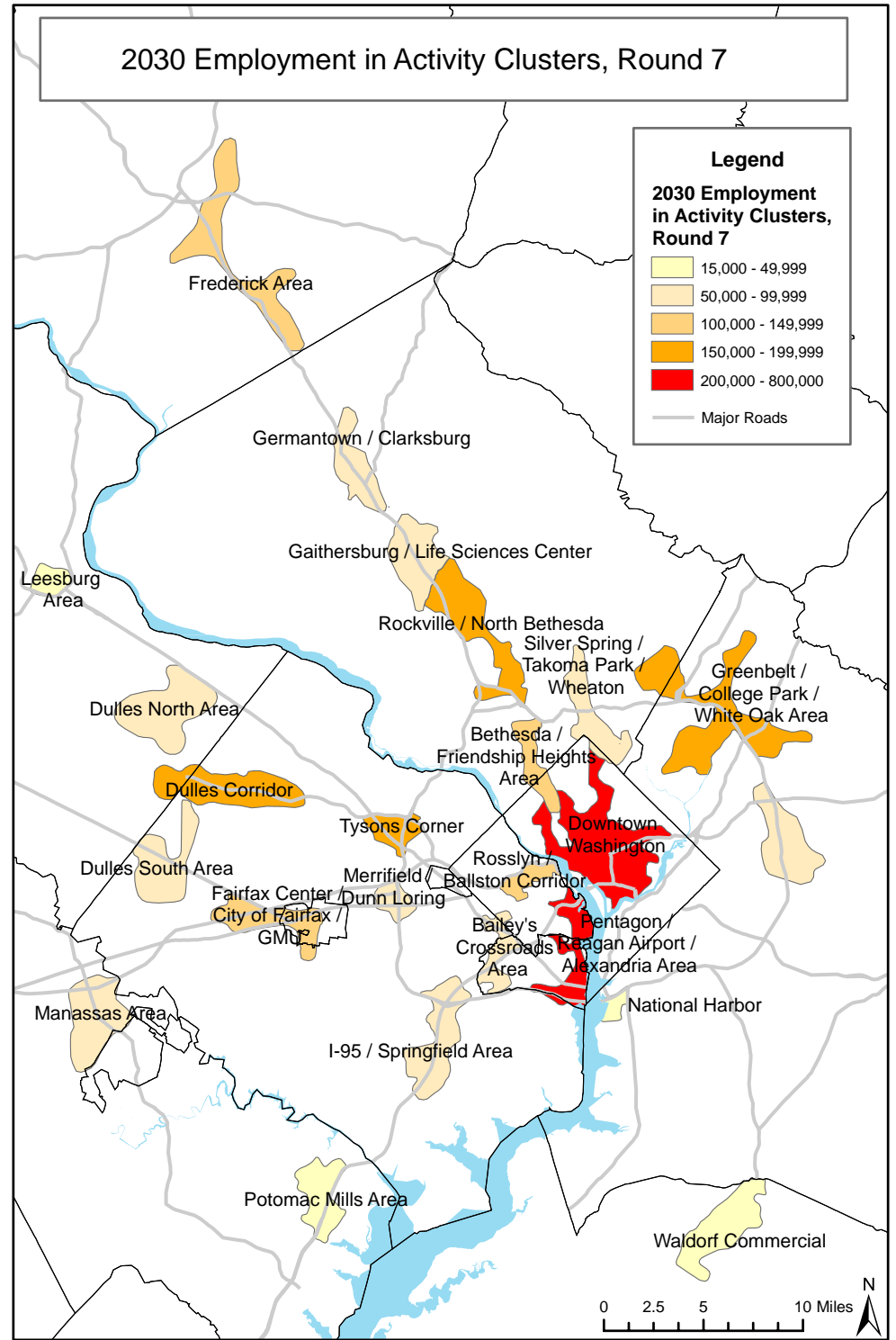
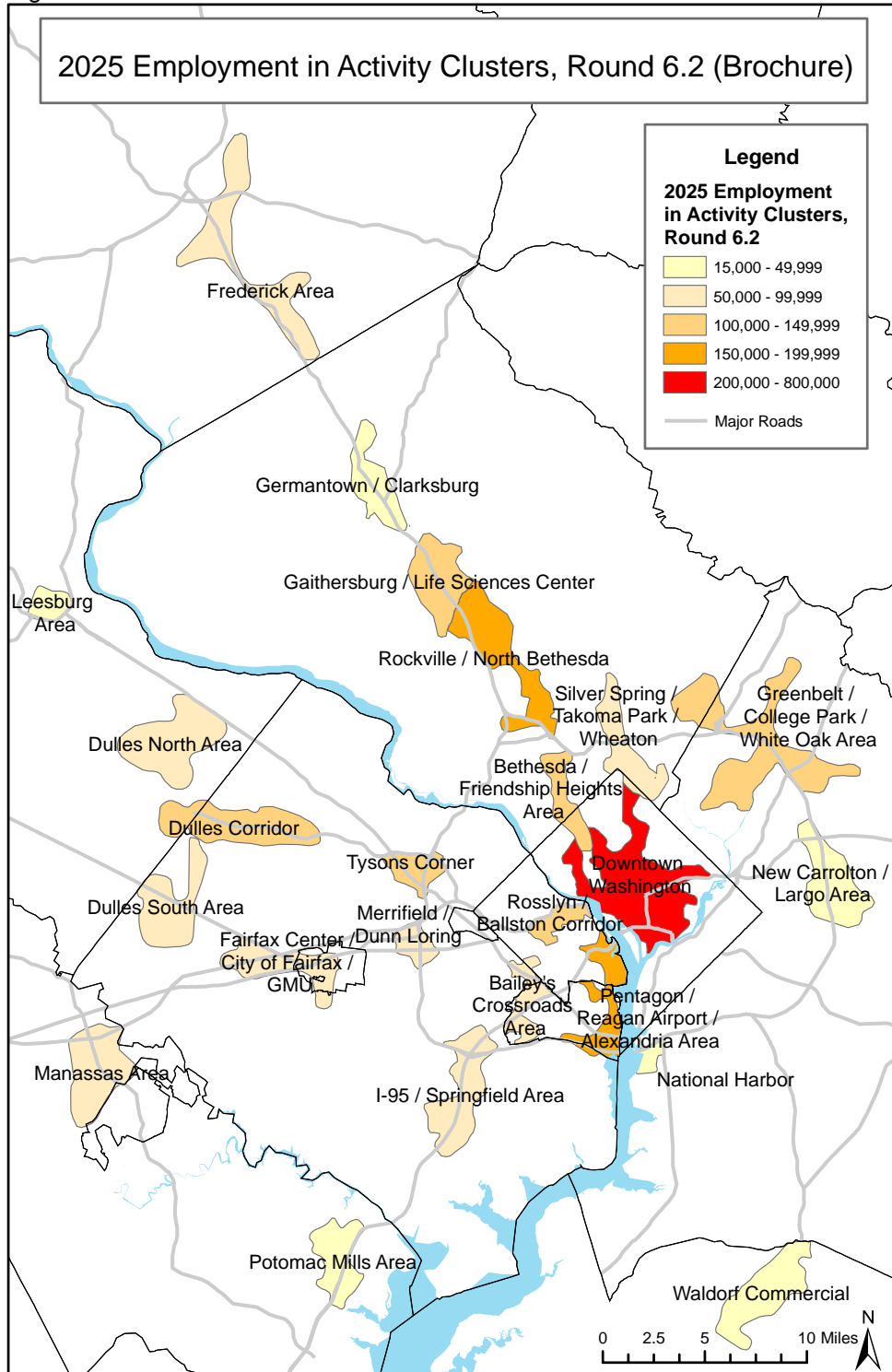
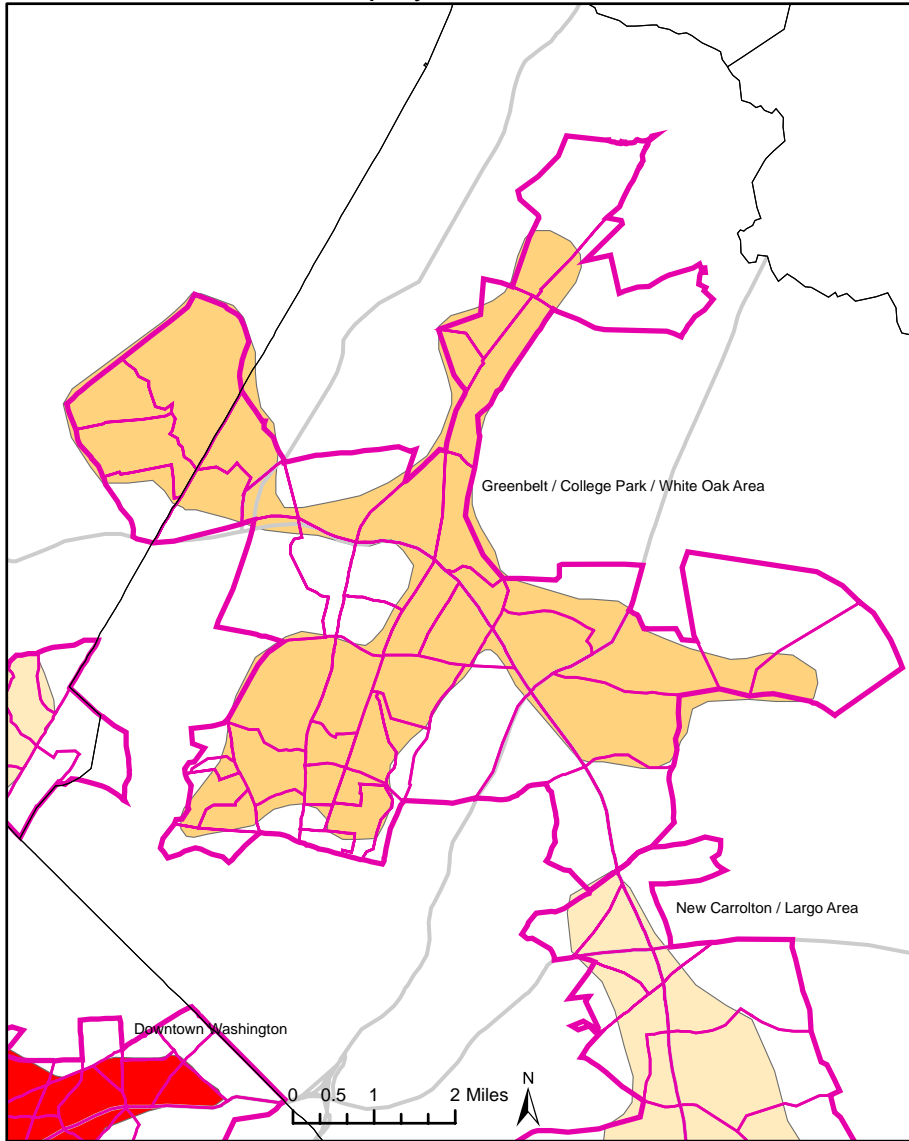


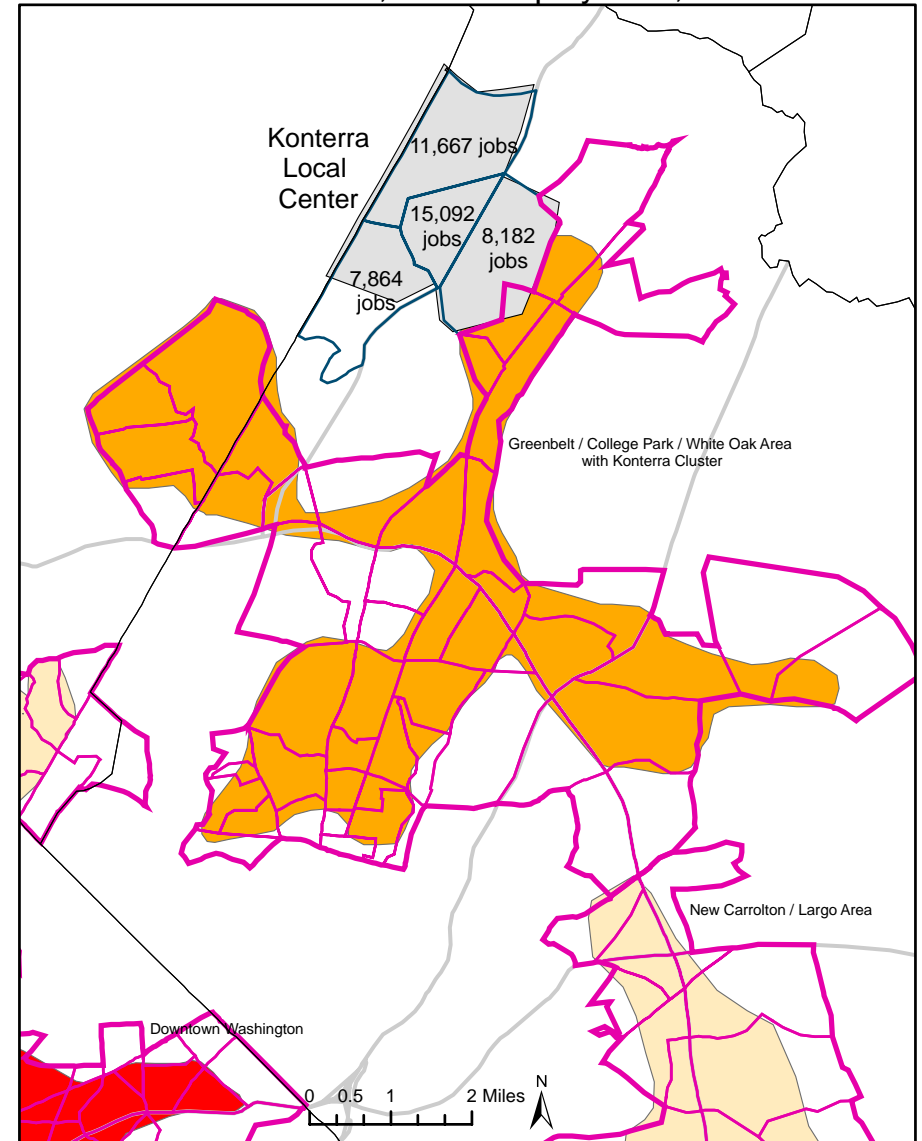
Figure 3



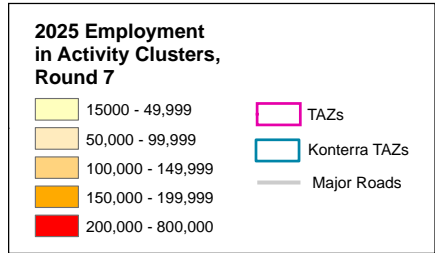
Greenbelt / College Park / White Oak Area Activity Cluster  
2025 Employment, Round 7



Greenbelt / College Park / White Oak Area Activity Cluster  
with Konterra TAZs, 2025 Employment, Round 7



Activity Cluster Employment:  
2025: 148,824  
2030: 159,135



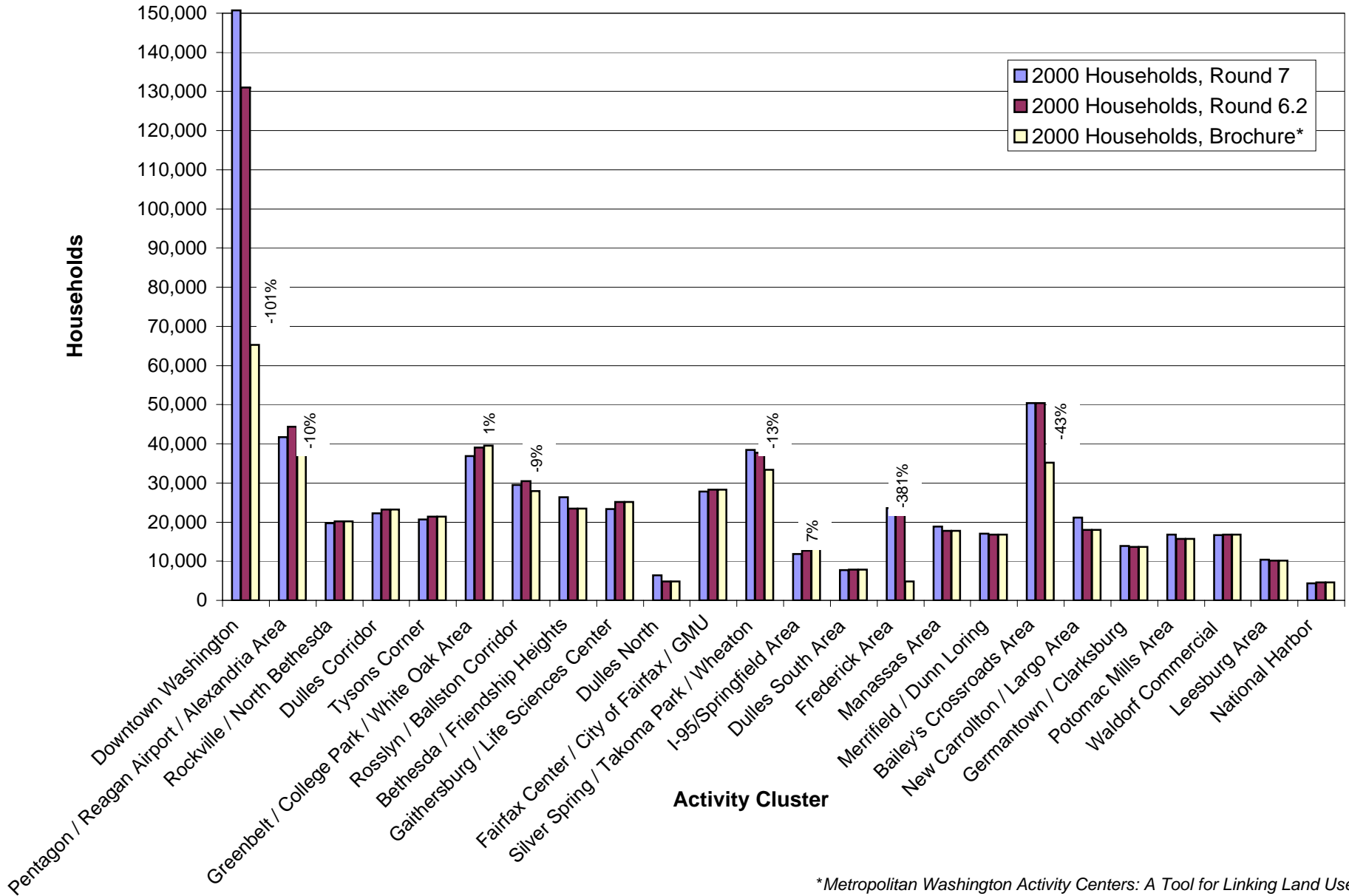
Activity Cluster Employment with Konterra TAZs:  
2025: 191,629  
2030: 210,870

Figure 4

**Employment in Activity Clusters, 2000 - 2030  
Round 7 Update**

	<b>Activity Cluster</b>	<b>2000 Employment</b>	<b>2005 Employment</b>	<b>2010 Employment</b>	<b>2015 Employment</b>	<b>2020 Employment</b>	<b>2025 Employment</b>	<b>2030 Employment</b>
1	Downtown Washington	632,948	640,037	677,102	709,170	723,257	739,053	752,170
2	Pentagon/Reagan Airport/Alexandria Area	130,407	141,162	155,212	175,869	184,590	195,419	203,182
3	Rockville / North Bethesda	137,994	144,527	161,636	173,138	183,906	191,279	197,537
4	Dulles Corridor	101,654	111,156	132,682	144,952	157,348	168,792	179,058
5	Tysons Corner	102,317	105,567	122,562	131,604	142,301	151,023	157,022
6	Greenbelt/College Park/White Oak Area	102,545	110,115	123,163	130,418	138,872	148,824	159,135
7	Rosslyn Ballson Corridor	75,672	88,279	98,535	103,599	113,030	116,966	124,291
8	Bethesda/Friendship Heights	93,698	94,616	99,128	102,677	105,580	107,331	109,636
9	Gaithersburg/Life Sciences Center	60,290	67,556	73,109	77,533	82,721	88,005	92,762
10	Dulles North	31,733	43,747	52,368	62,589	70,139	78,954	88,774
11	Fairfax Center/City of Fairfax/GMU	77,157	79,692	87,262	93,146	98,716	104,234	109,107
12	Silver Spring/Takoma Park/Wheaton	67,220	67,316	69,410	70,945	72,035	73,442	75,190
13	I-95 / Springfield Area	46,807	48,892	52,873	58,183	63,361	67,326	70,564
14	Dulles South	47,998	52,975	64,459	71,706	78,062	84,806	90,476
15	Frederick Area	54,848	72,692	88,766	95,421	99,705	102,874	105,461
16	Manassas Area	32,950	39,292	45,089	49,843	53,440	56,648	60,262
17	Merrifield/Dunn Loring	49,846	51,120	56,447	60,365	62,782	65,759	67,643
18	Bailey's Crossroads Area	54,142	57,816	64,488	67,104	69,456	69,461	69,549
19	New Carrolton/Largon Area	32,544	34,624	43,141	46,082	49,144	56,436	60,326
20	Germantown/Clarksburg	19,646	25,556	30,809	39,878	48,488	56,516	61,791
21	Potomac Mills Area	21,356	24,706	28,789	33,135	36,345	39,630	42,842
22	Waldorf Commercial	20,175	27,716	30,997	31,967	32,935	33,438	33,939
23	Leesburg Area	10,867	14,847	19,037	22,520	25,042	28,195	31,267
24	National Harbor	2,603	4,669	7,433	10,319	14,062	14,824	17,599

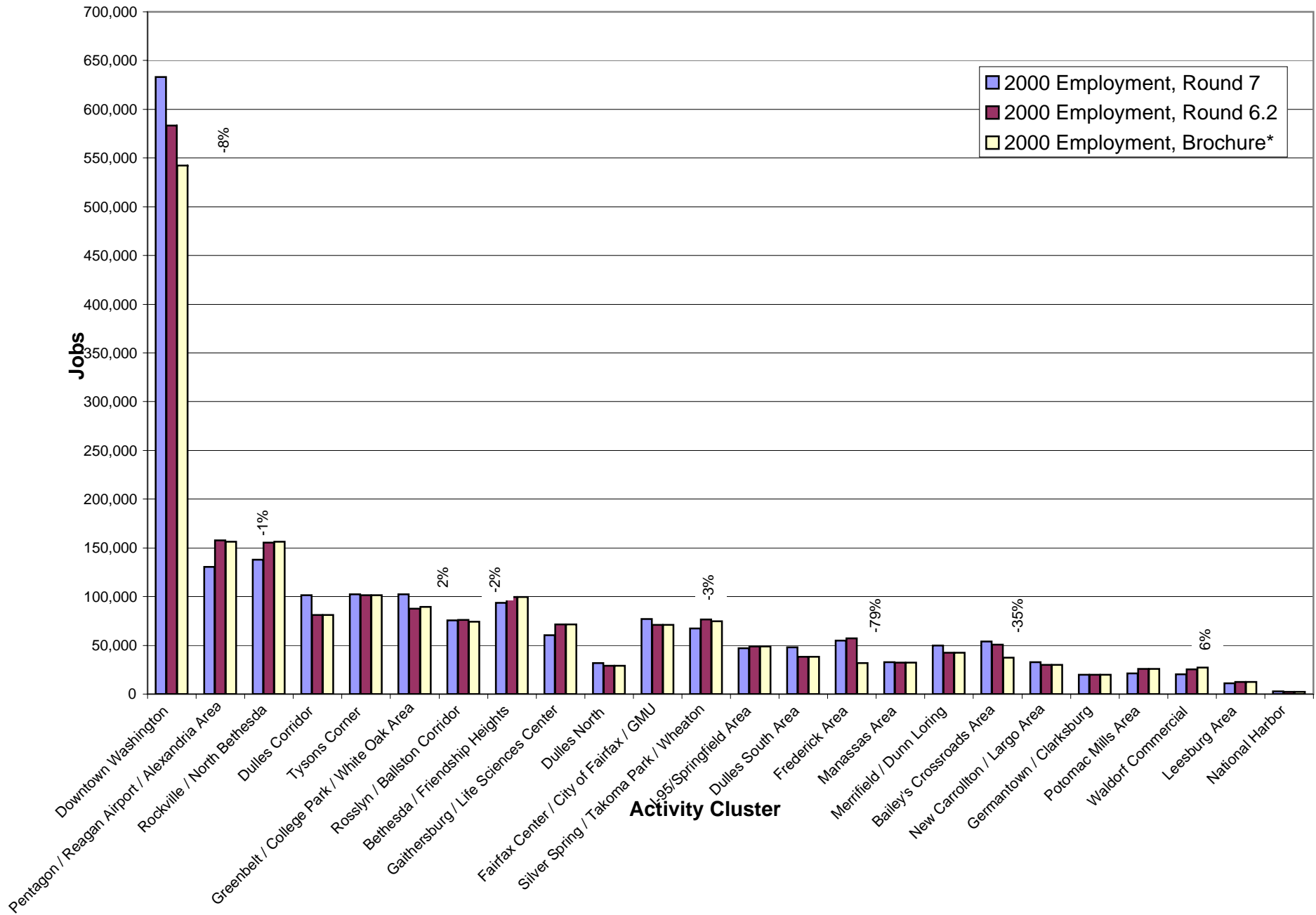
## Households in Activity Clusters, 2000: Round 7 and Round 6.2



\*Metropolitan Washington Activity Centers: A Tool for Linking Land Use and Transportation Planning

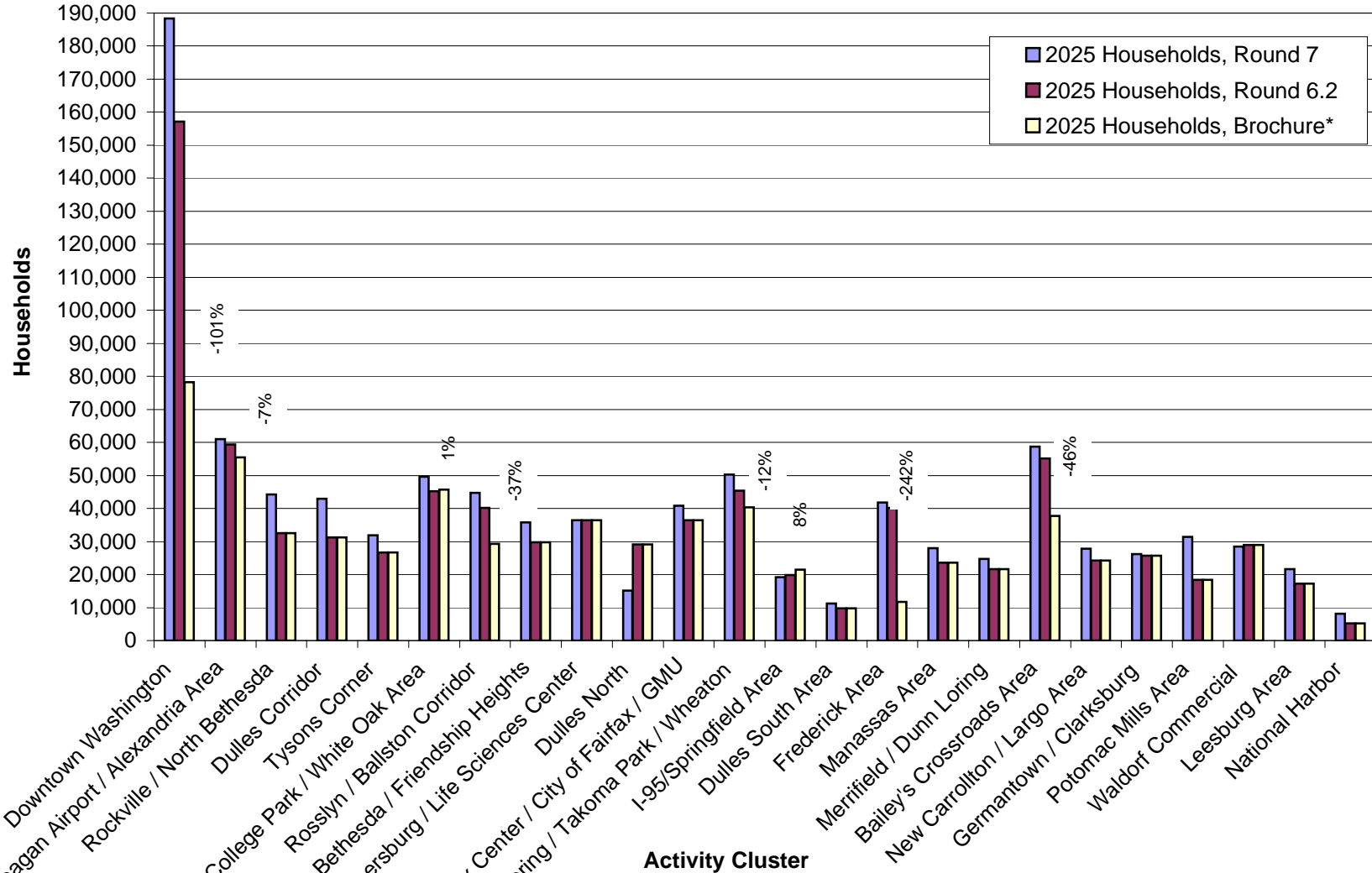


## Employment in Activity Clusters, 2000: Round 7 and Round 6.2



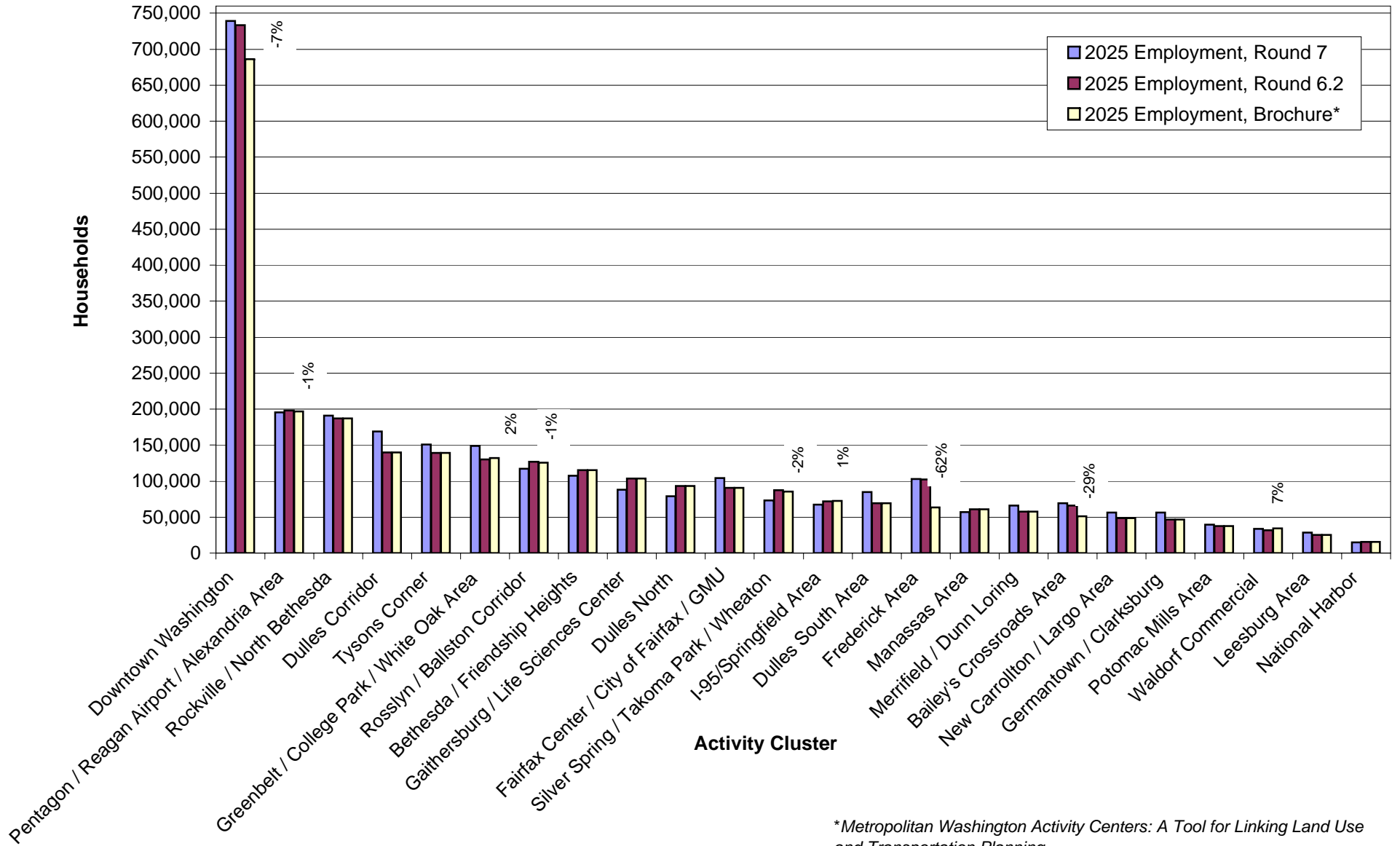
\*Metropolitan Washington Activity Centers: A Tool for Linking Land Use and Transportation Planning

## Households in Activity Clusters, 2025: Round 7 and Round 6.2



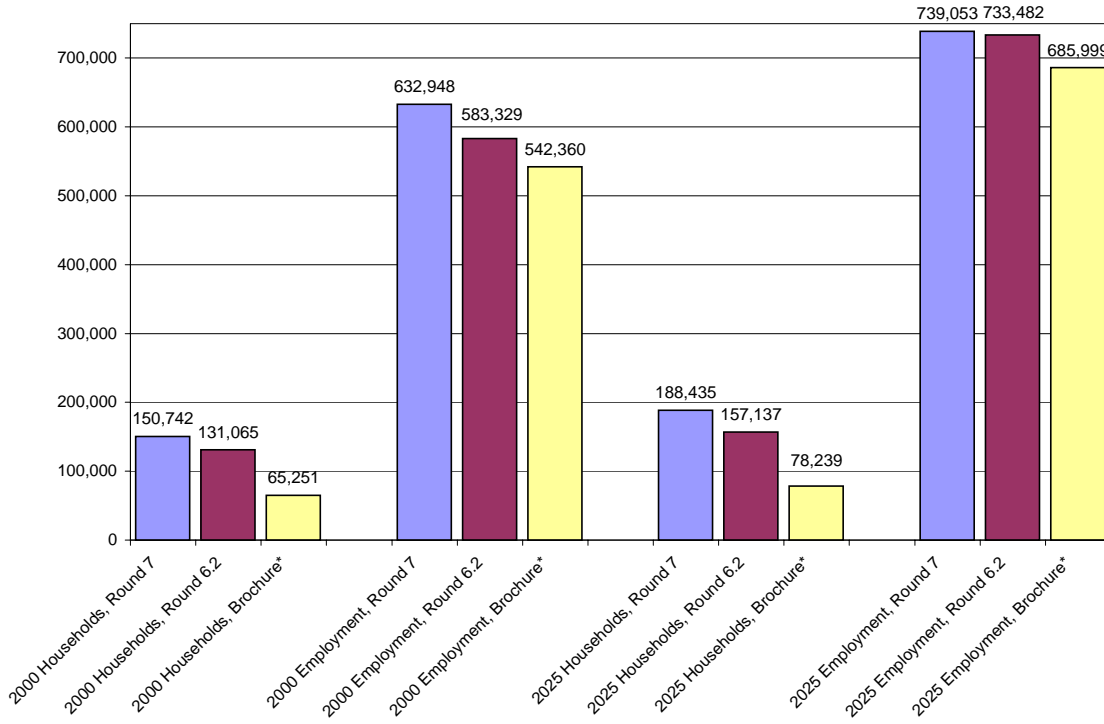
\*Metropolitan Washington Activity Centers: A Tool for Linking Land Use and Transportation Planning

## Employment in Activity Clusters, 2025: Round 7 and Round 6.2



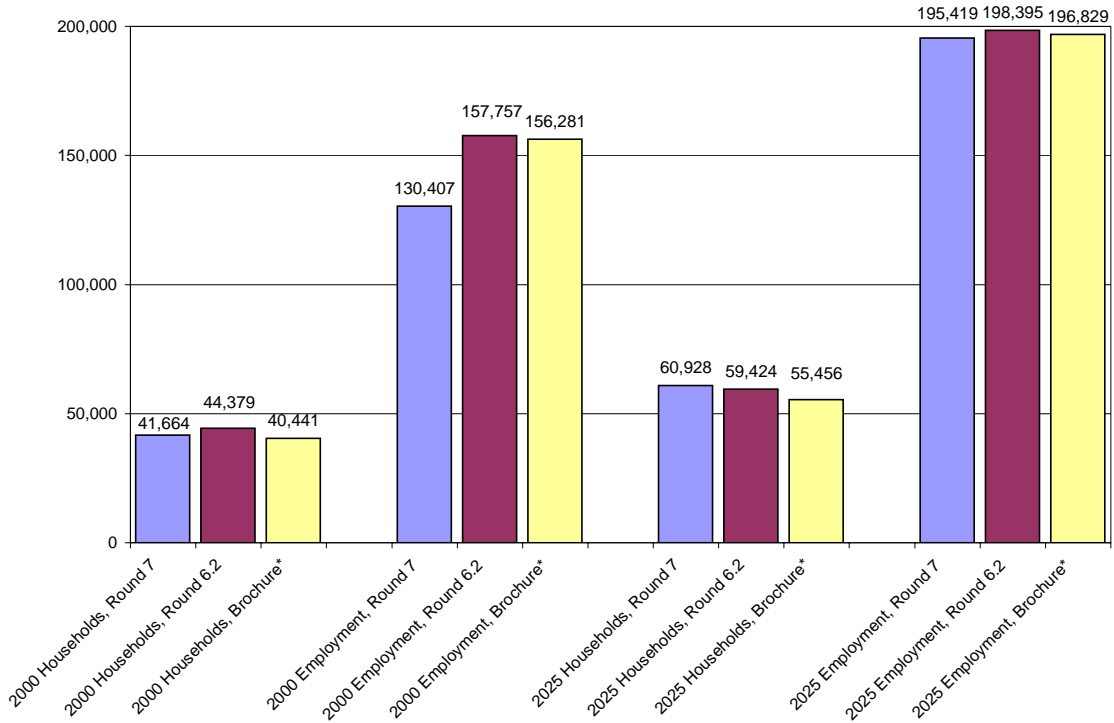
\*Metropolitan Washington Activity Centers: A Tool for Linking Land Use and Transportation Planning

**Downtown DC Activity Cluster  
Households and Employment, 2000 and 2025**



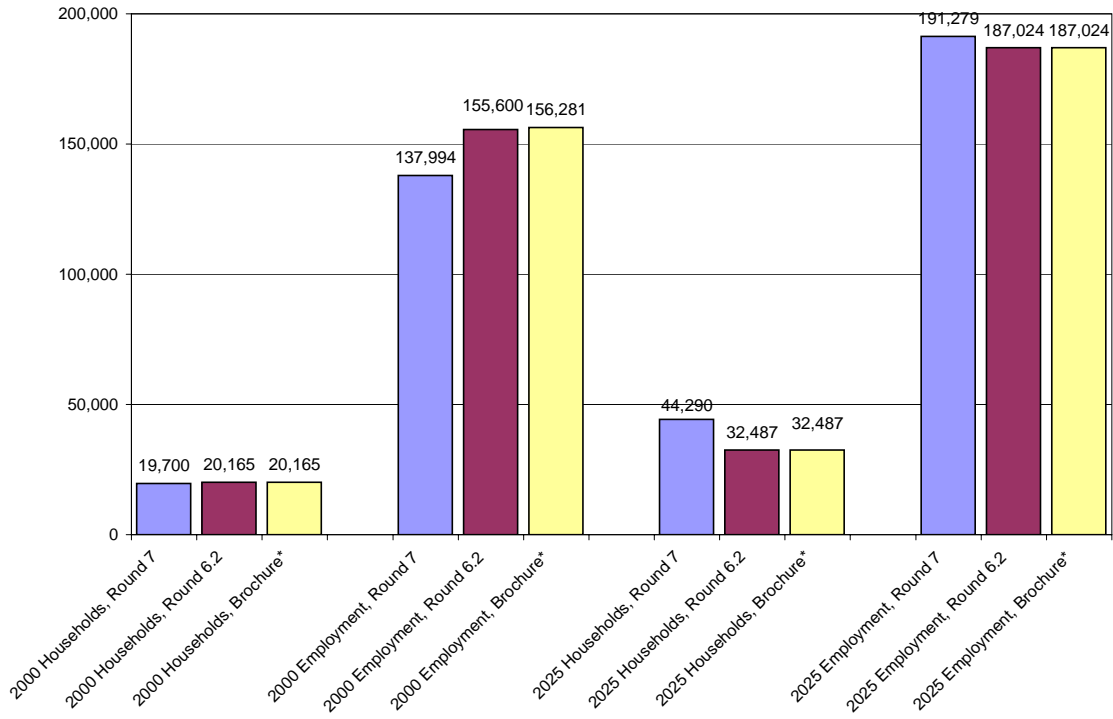
\*Metropolitan Washington Activity Centers: A Tool for Linking Land Use and Transportation Planning

**Pentagon/Reagan Airport/Alexandria Area Activity Cluster  
Households and Employment, 2000 and 2025**



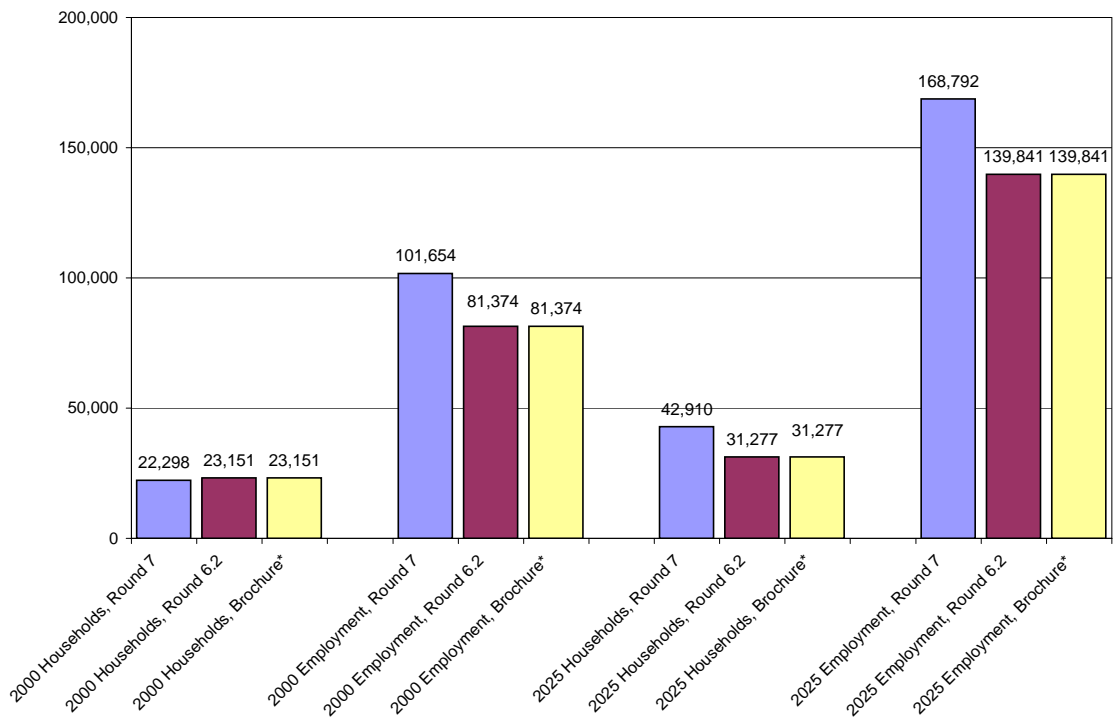
\*Metropolitan Washington Activity Centers: A Tool for Linking Land Use and Transportation Planning

**Rockville / North Bethesda Activity Cluster  
Households and Employment, 2000 and 2025**



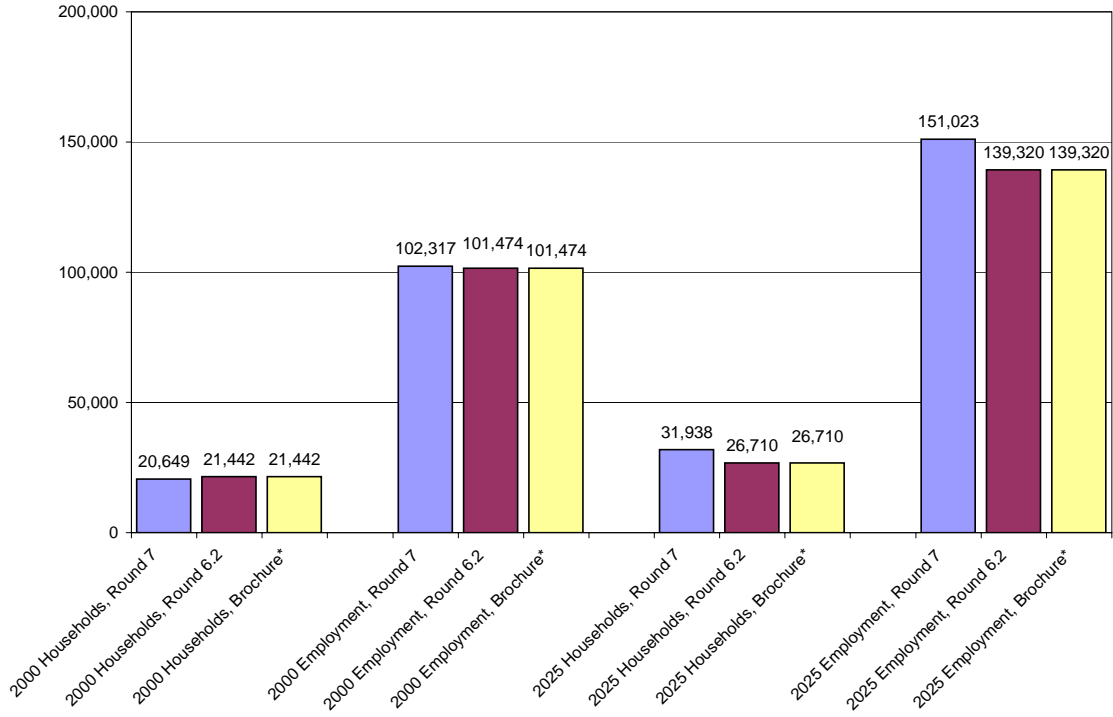
*\*Metropolitan Washington Activity Centers: A Tool for Linking Land Use and Transportation Planning*

**Dulles Corridor Activity Cluster  
Households and Employment, 2000 and 2025**



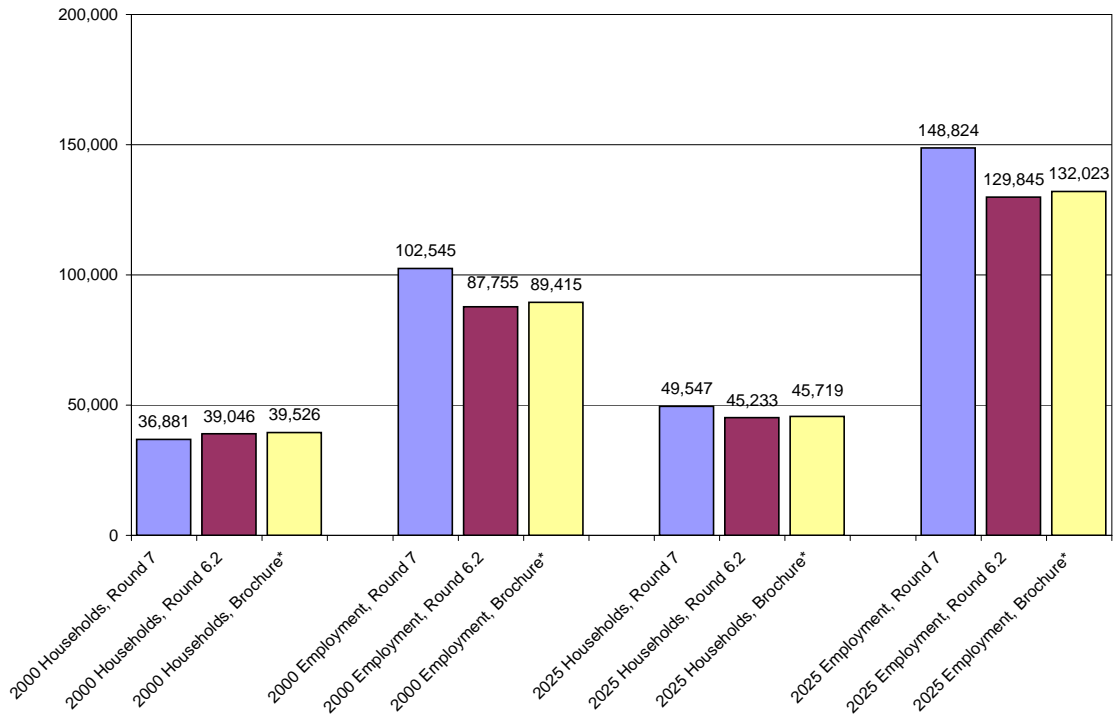
*\*Metropolitan Washington Activity Centers: A Tool for Linking Land Use and Transportation Planning*

**Tysons Corner Activity Cluster  
Households and Employment, 2000 and 2025**



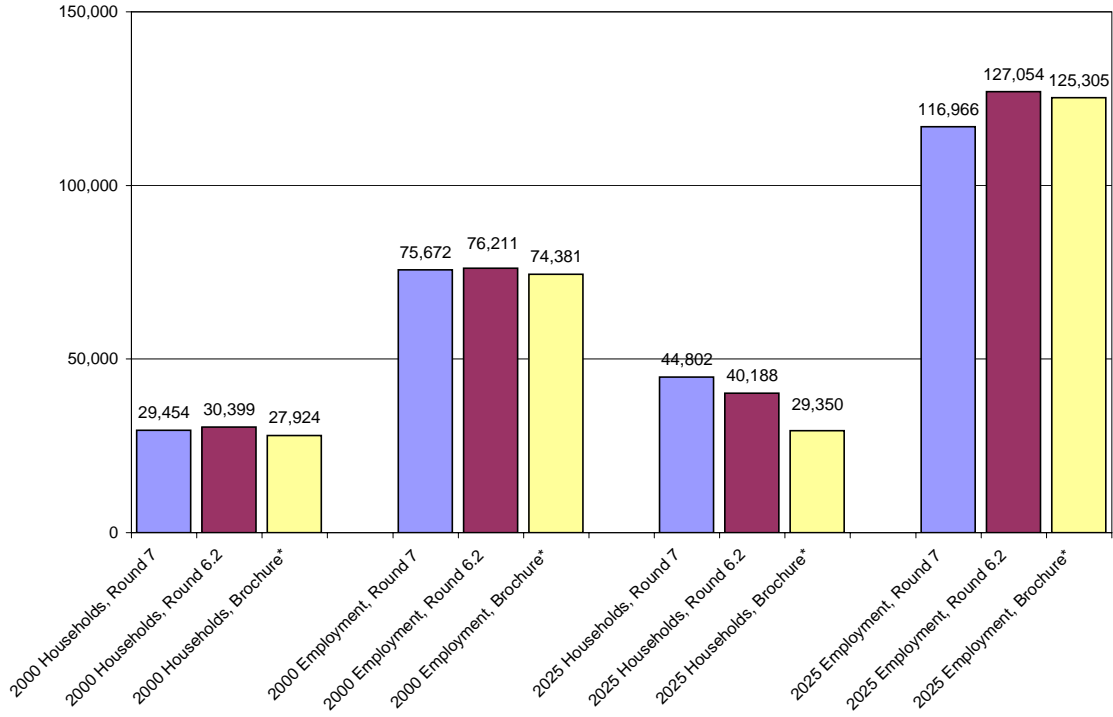
*\*Metropolitan Washington Activity Centers: A Tool for Linking Land Use and Transportation Planning*

**Greenbelt / College Park / White Oak Area Activity Cluster  
Households and Employment, 2000 and 2025**



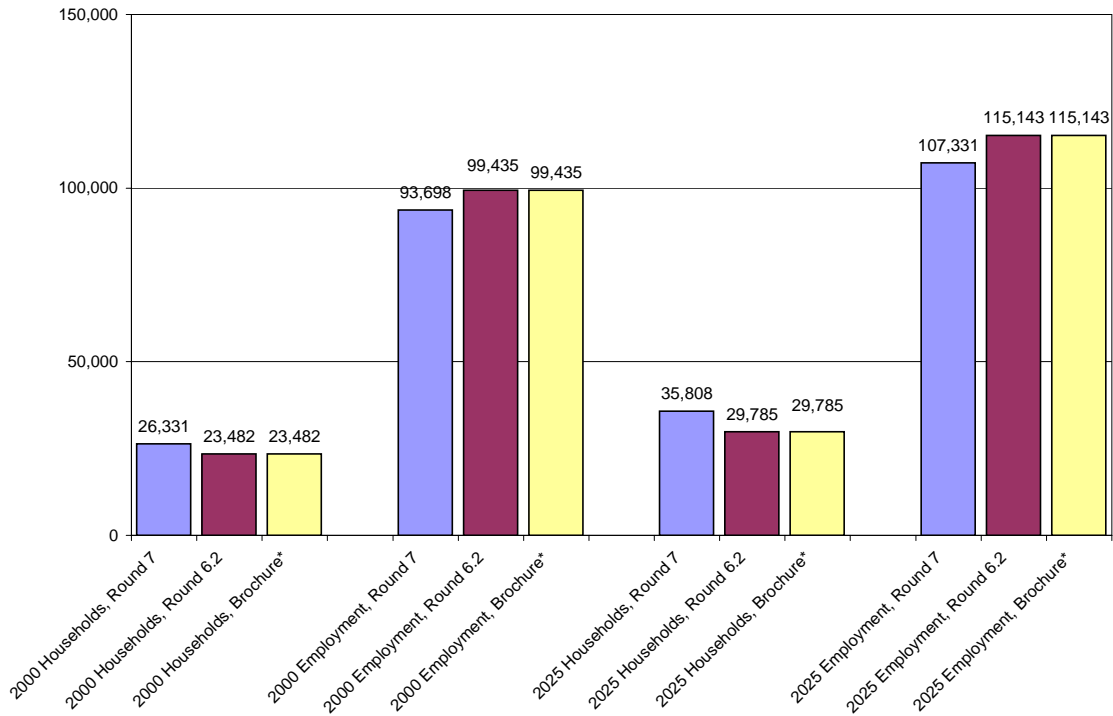
*\*Metropolitan Washington Activity Centers: A Tool for Linking Land Use and Transportation Planning*

**Rosslyn / Ballson Corridor Activity Cluster  
Households and Employment, 2000 and 2025**



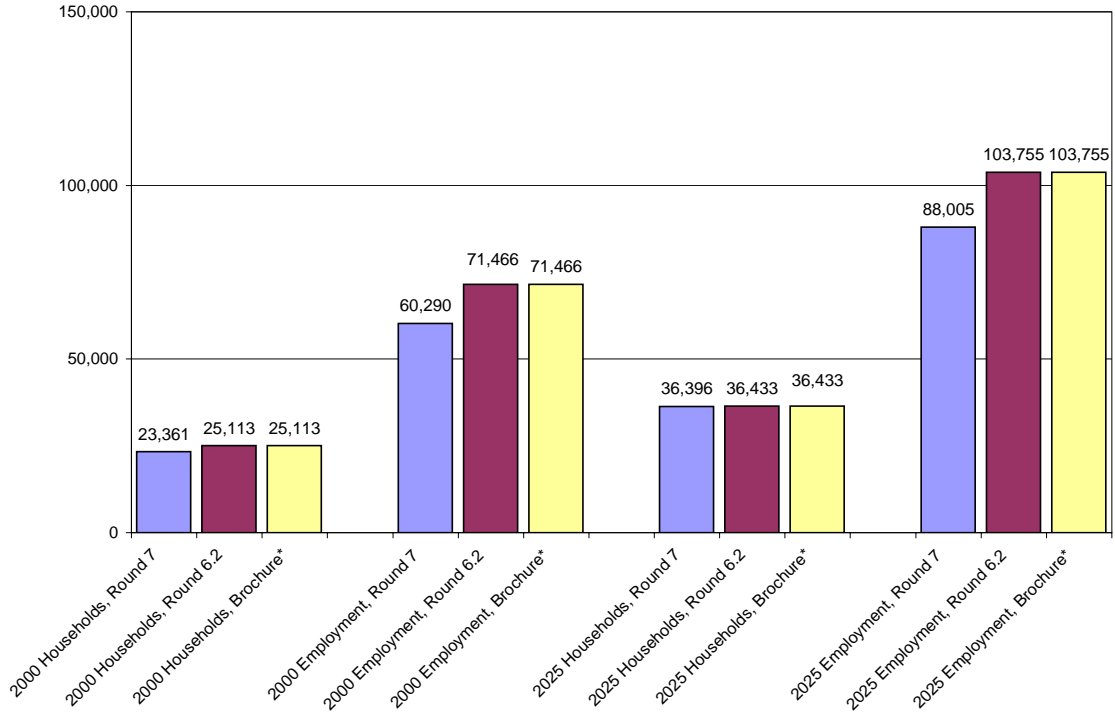
*\*Metropolitan Washington Activity Centers: A Tool for Linking Land Use and Transportation Planning*

**Bethesda / Friendship Heights Activity Cluster  
Households and Employment, 2000 and 2025**



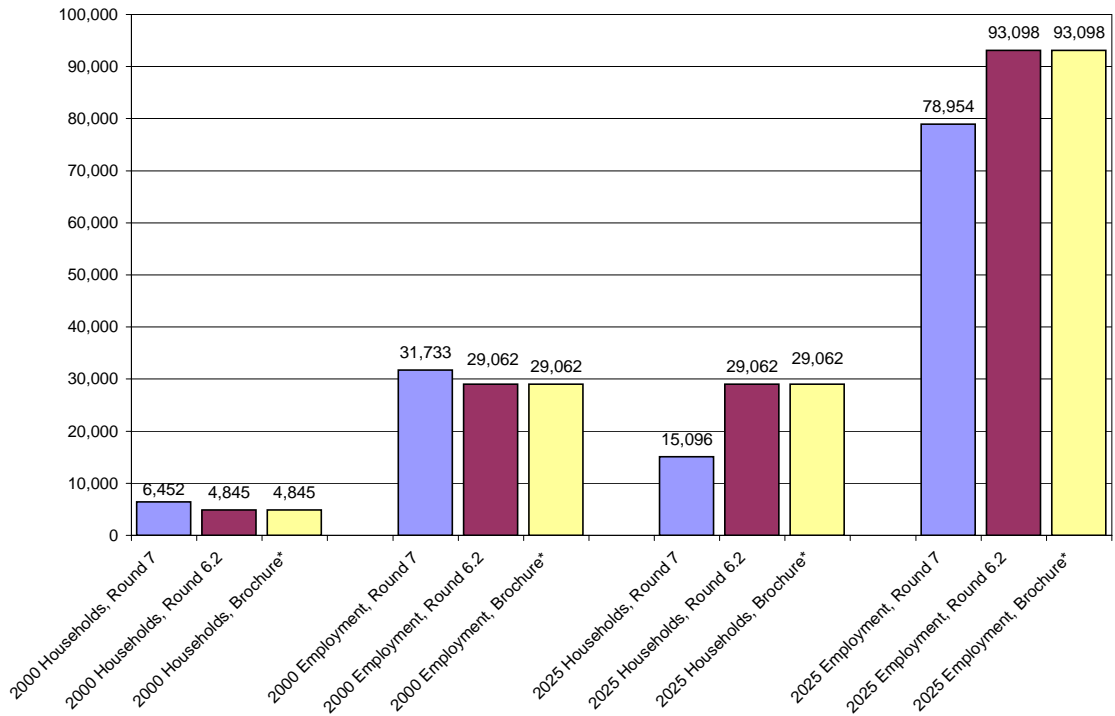
*\*Metropolitan Washington Activity Centers: A Tool for Linking Land Use and Transportation Planning*

**Gaithersburg / Life Sciences Center Activity Cluster  
Households and Employment, 2000 and 2025**



\*Metropolitan Washington Activity Centers: A Tool for Linking Land Use and Transportation Planning

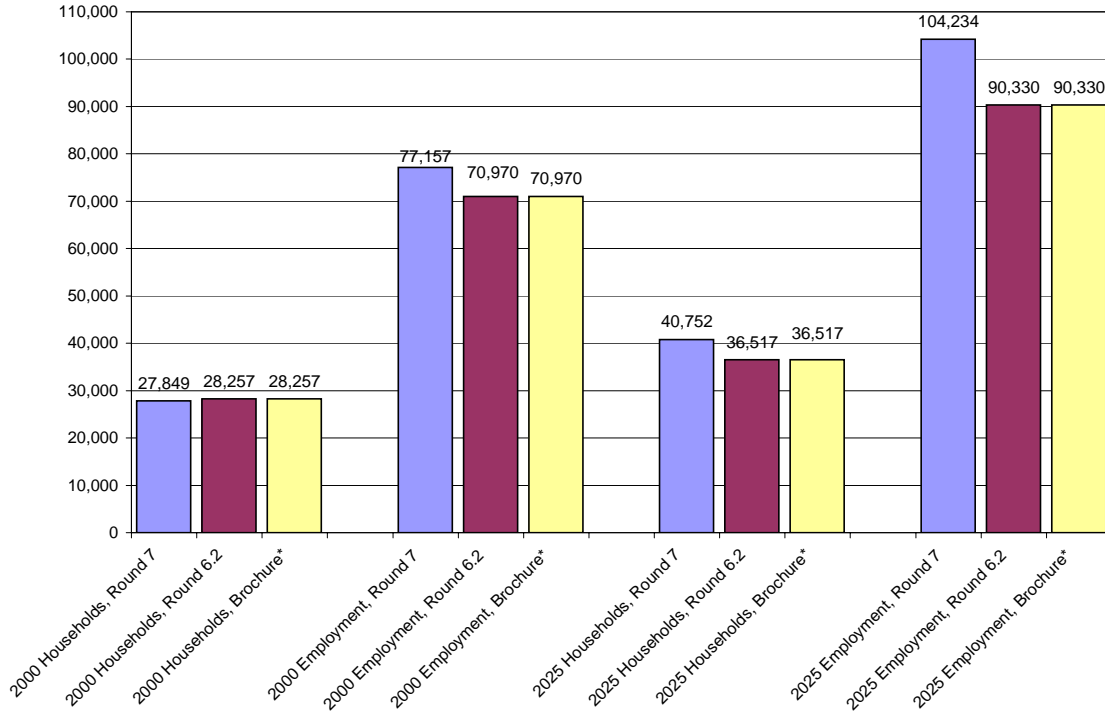
**Dulles North Activity Cluster  
Households and Employment, 2000 and 2025**



\*Metropolitan Washington Activity Centers: A Tool for Linking Land Use and Transportation Planning

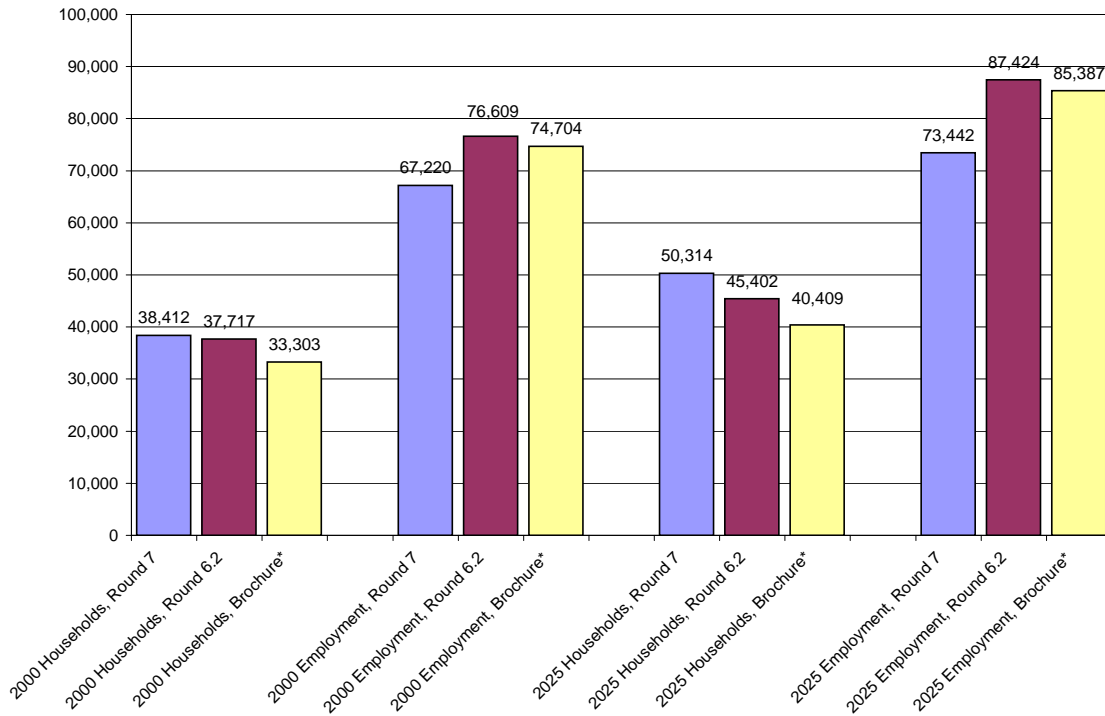


**Fairfax Center / City of Fairfax / GMU Activity Cluster  
Households and Employment, 2000 and 2025**



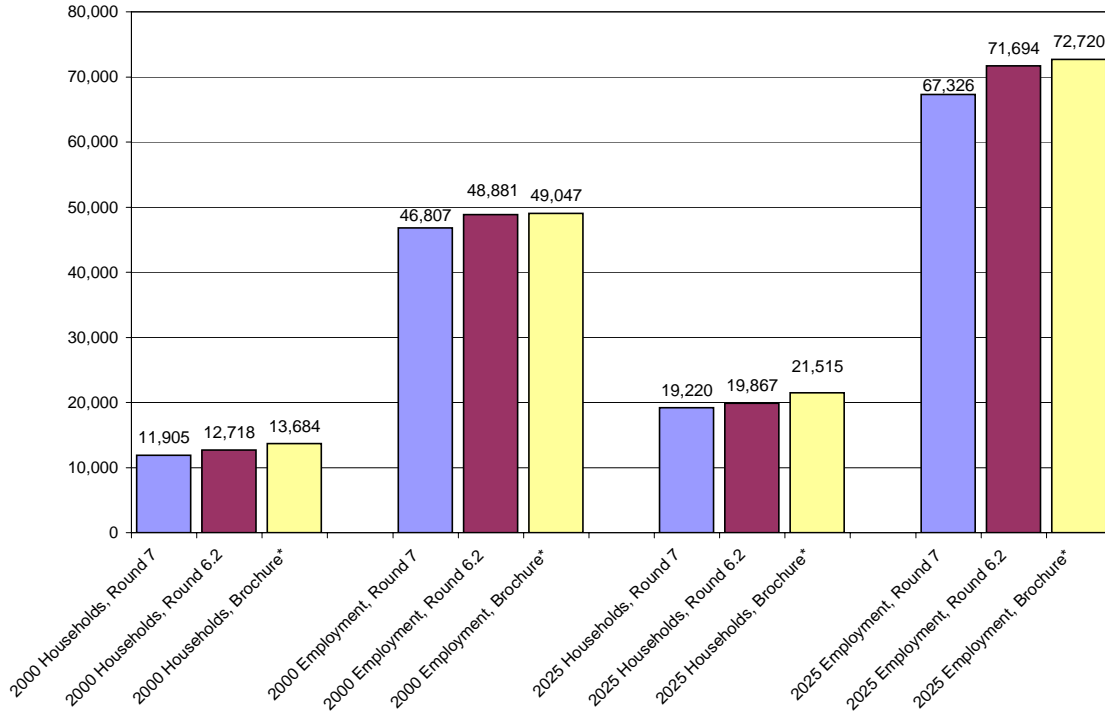
\*Metropolitan Washington Activity Centers: A Tool for Linking Land Use and Transportation Planning

**Silver Spring / Takoma Park / Wheaton Activity Cluster  
Households and Employment, 2000 and 2025**



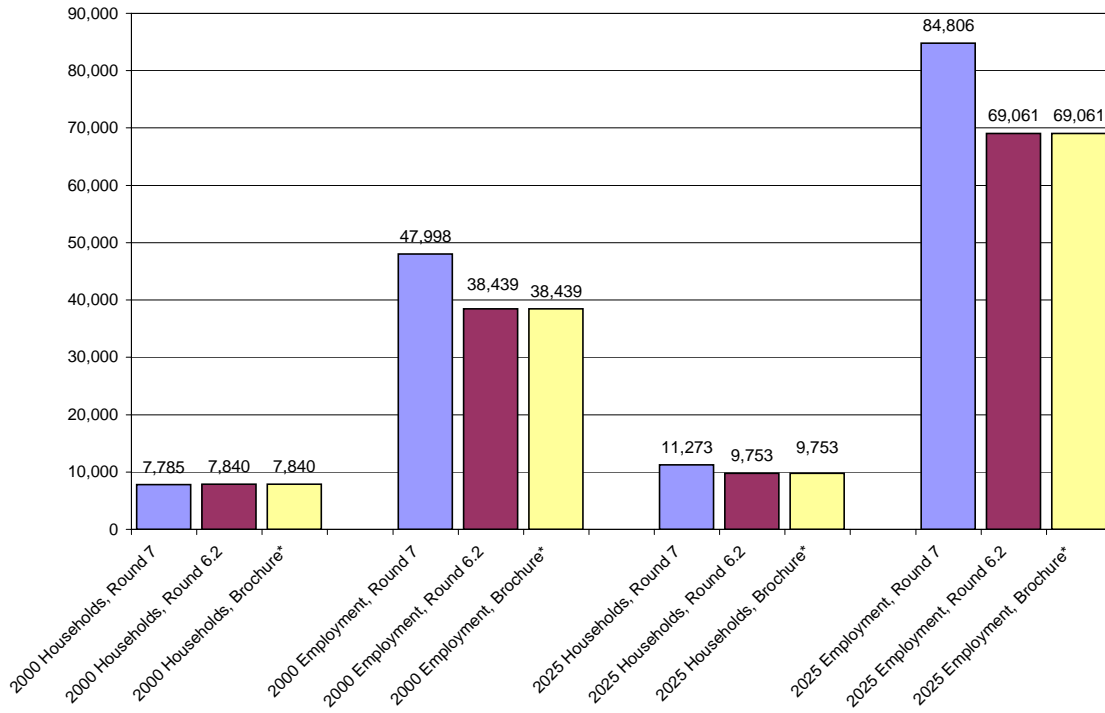
\*Metropolitan Washington Activity Centers: A Tool for Linking Land Use and Transportation Planning

**I-95 / Springfield Area Activity Cluster  
Households and Employment, 2000 and 2025**



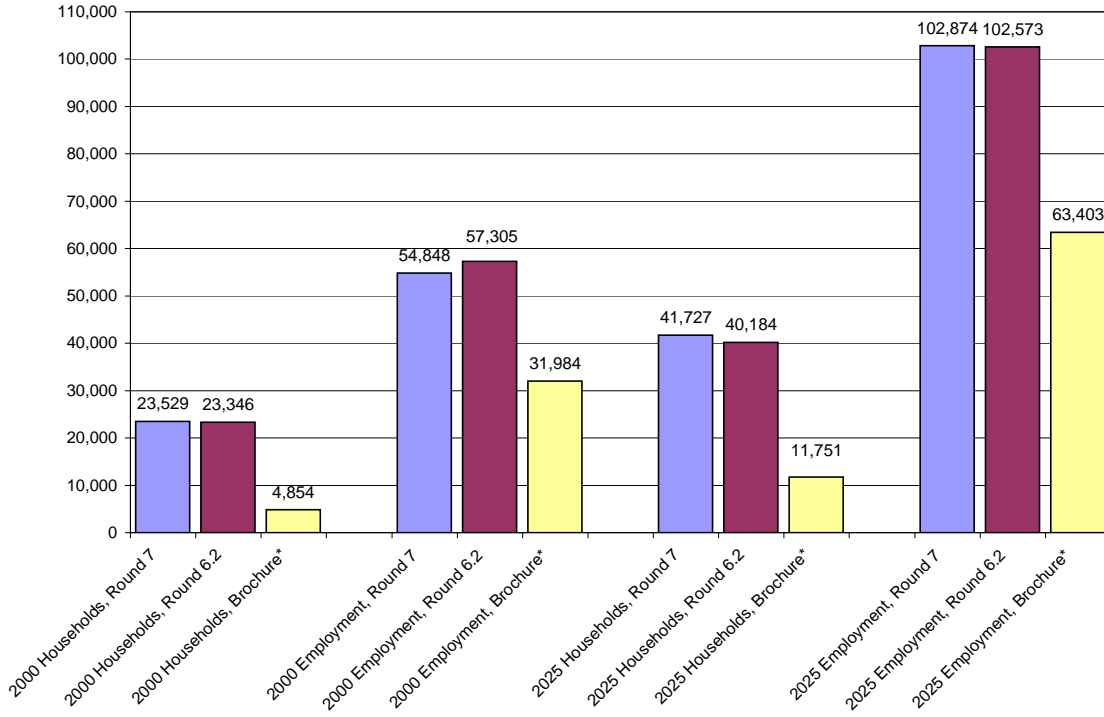
\*Metropolitan Washington Activity Centers: A Tool for Linking Land Use and Transportation Planning

**Dulles South Area Activity Cluster  
Households and Employment, 2000 and 2025**



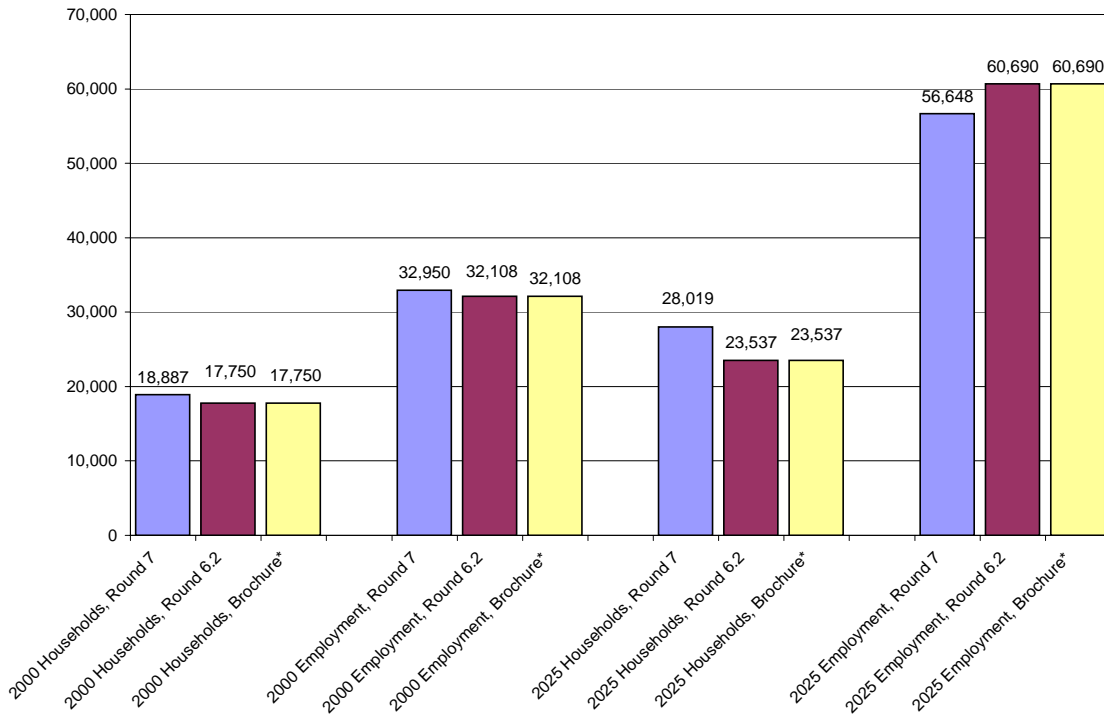
\*Metropolitan Washington Activity Centers: A Tool for Linking Land Use and Transportation Planning

**Frederick Area Activity Cluster  
Households and Employment, 2000 and 2025**



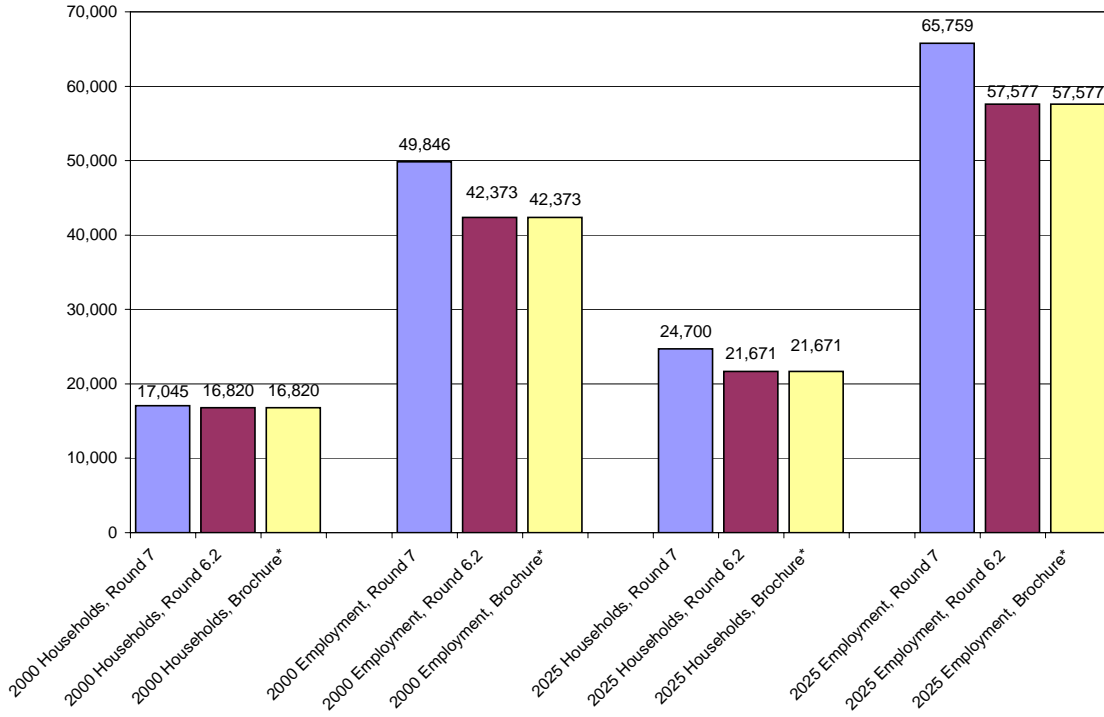
*\*Metropolitan Washington Activity Centers: A Tool for Linking Land Use and Transportation Planning*

**Manassas Area Activity Cluster  
Households and Employment, 2000 and 2025**



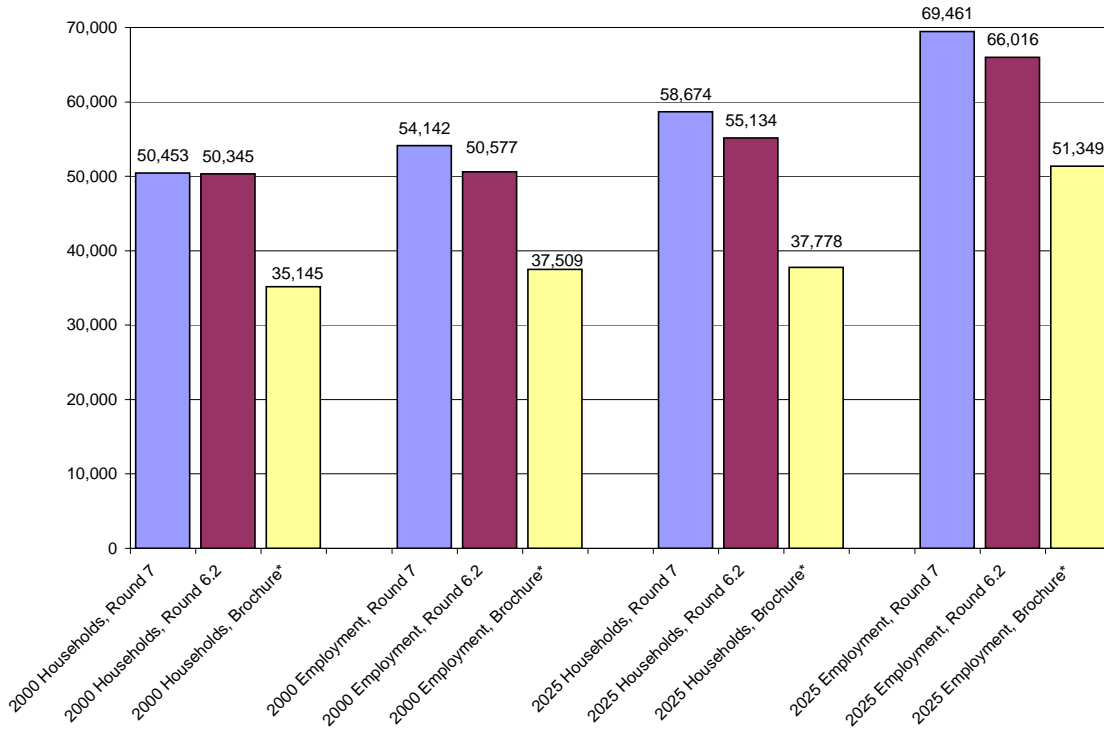
*\*Metropolitan Washington Activity Centers: A Tool for Linking Land Use and Transportation Planning*

**Merrifield / Dunn Loring Activity Cluster  
Households and Employment, 2000 and 2025**



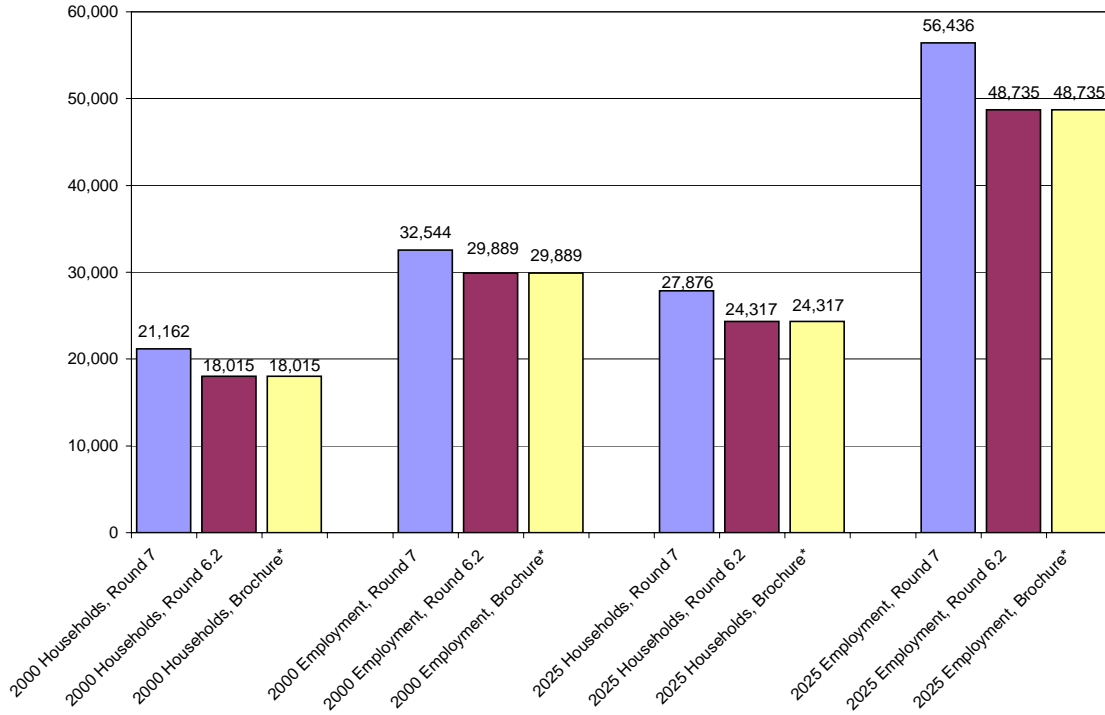
\*Metropolitan Washington Activity Centers: A Tool for Linking Land Use and Transportation Planning

**Bailey's Crossroads Area Activity Cluster  
Households and Employment, 2000 and 2025**



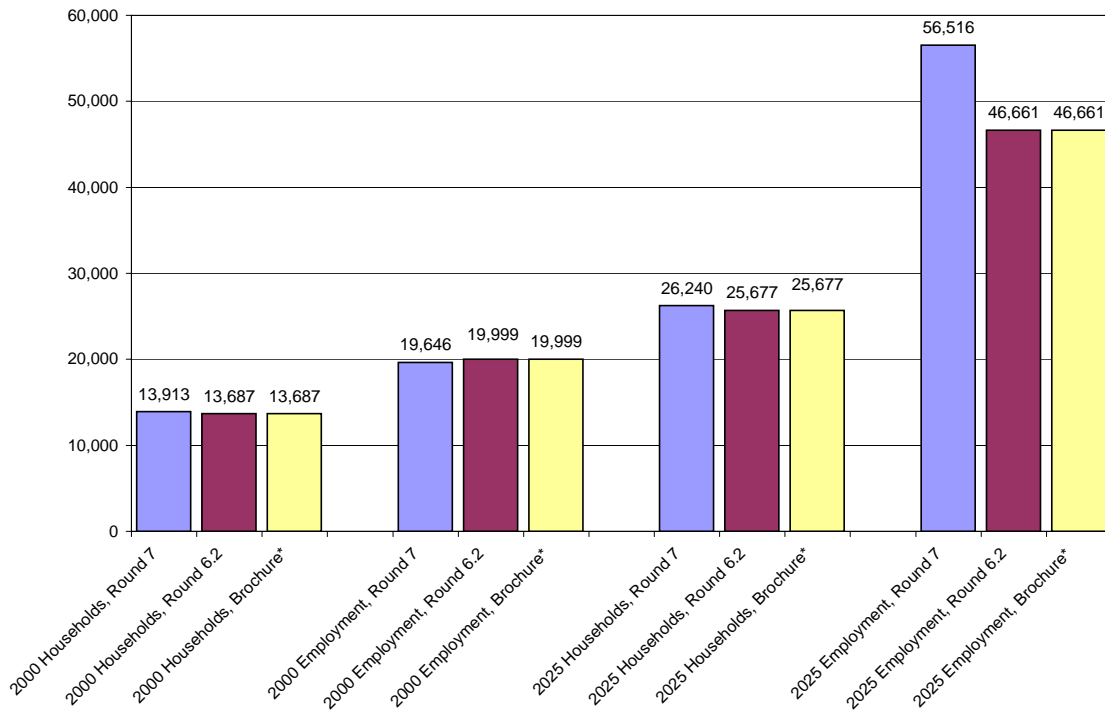
\*Metropolitan Washington Activity Centers: A Tool for Linking Land Use and Transportation Planning

**New Carrollton / Largo Area Activity Cluster  
Households and Employment, 2000 and 2025**



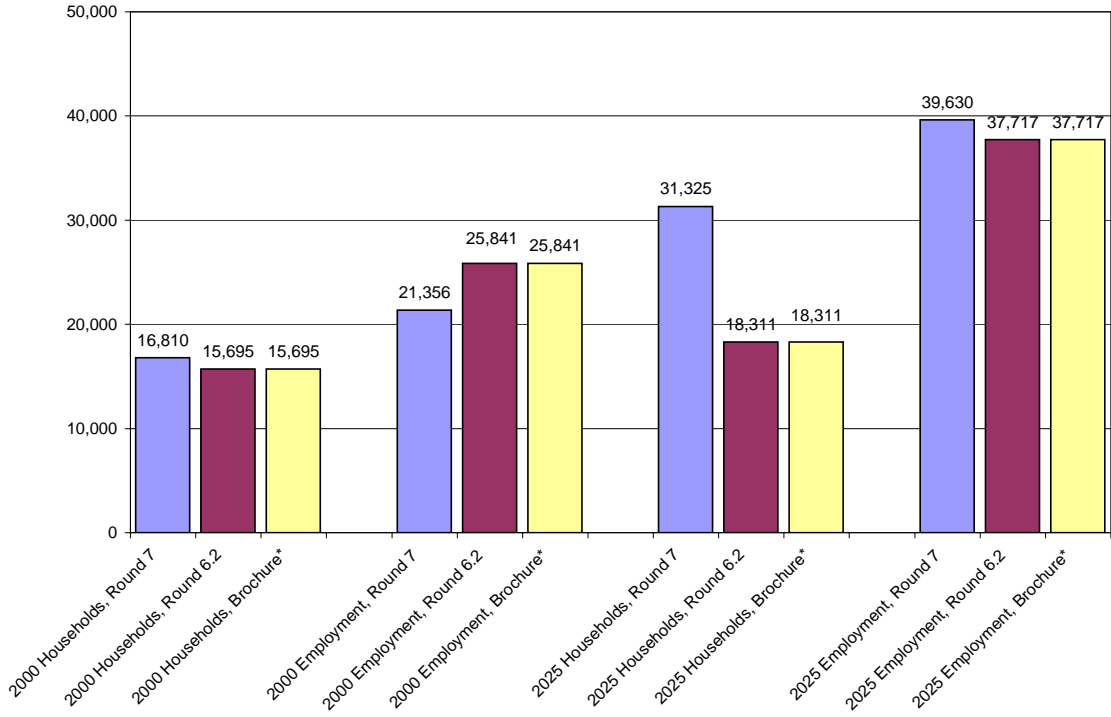
*\*Metropolitan Washington Activity Centers: A Tool for Linking Land Use and Transportation Planning*

**Germantown / Clarksburg Activity Cluster  
Households and Employment, 2000 and 2025**



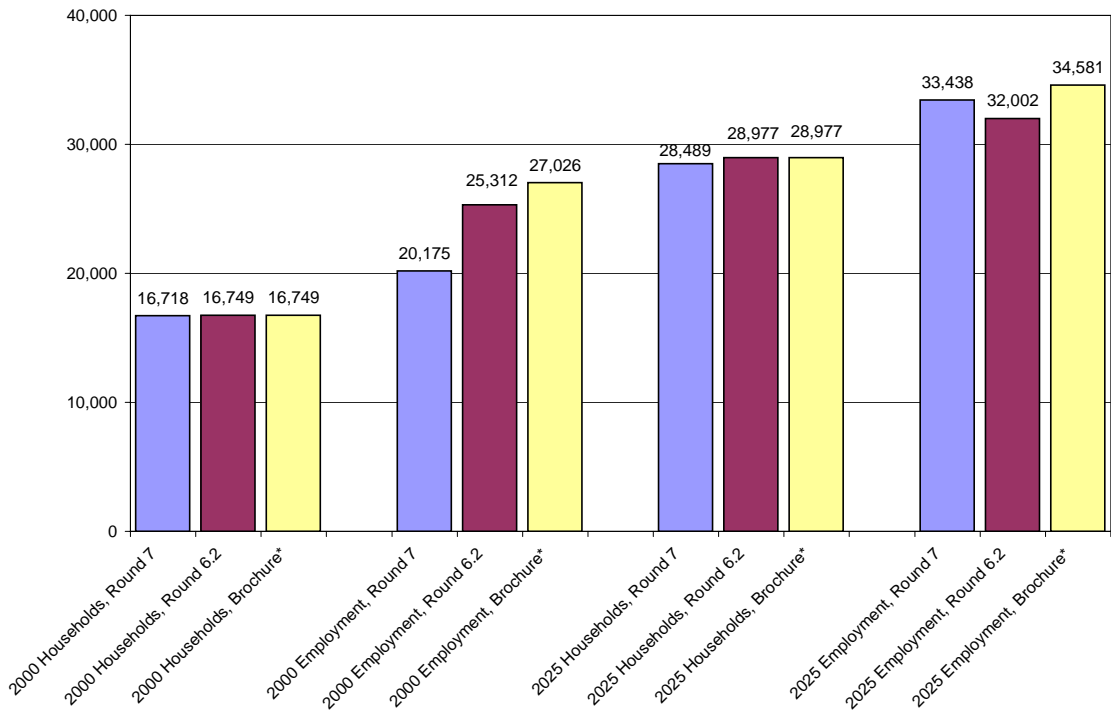
*\*Metropolitan Washington Activity Centers: A Tool for Linking Land Use and Transportation Planning*

**Potomac Mills Area Activity Cluster  
Households and Employment, 2000 and 2025**



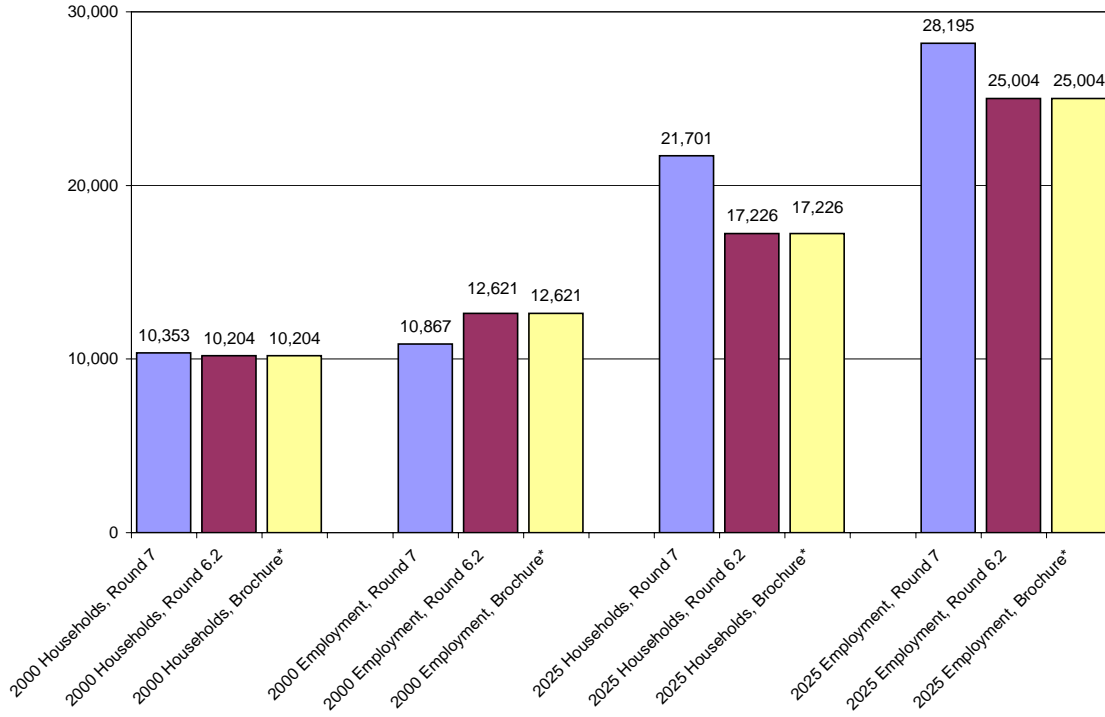
*\*Metropolitan Washington Activity Centers: A Tool for Linking Land Use and Transportation Planning*

**Waldorf Commercial Activity Cluster  
Households and Employment, 2000 and 2025**



*\*Metropolitan Washington Activity Centers: A Tool for Linking Land Use and Transportation Planning*

**Leesburg Area Activity Cluster  
Households and Employment, 2000 and 2025**



**National Harbor Activity Cluster  
Households and Employment**

