



TRANSPORTATION LAND-USE CONNECTIONS (TLC) PROGRAM

Promoting Regional Accessibility Through Local Planning

John Swanson, Transportation Planner
Region Forward Coalition
April 26, 2024



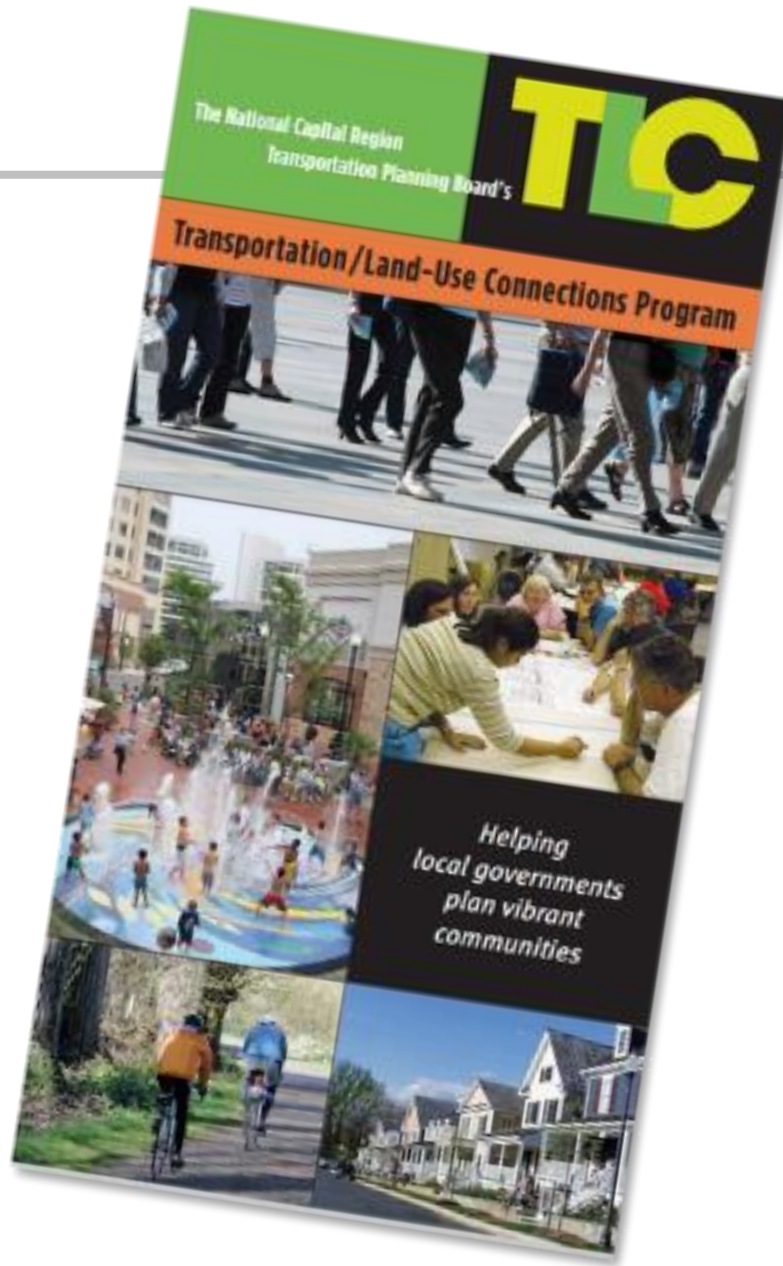
National Capital Region
Transportation Planning Board

TPB Local Technical Assistance Programs

- Transportation Land Use Connections (TLC) Program
- Regional Roadway Safety Program (RRSP)
- Transit Within Reach Program

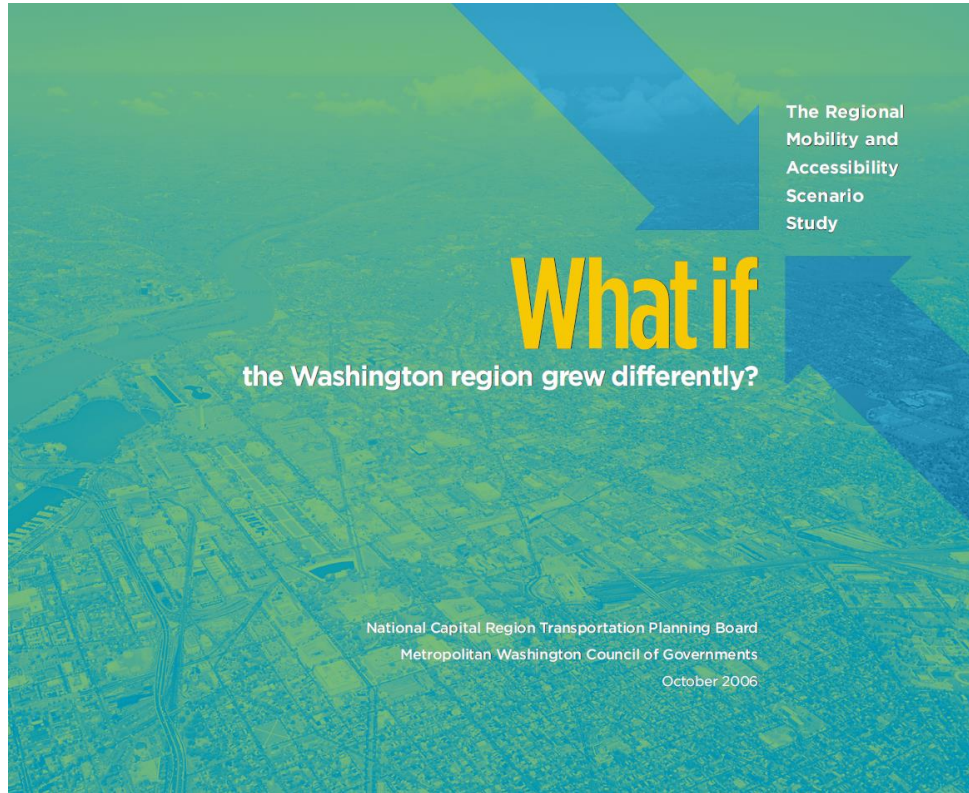
TLC Program

186
projects
since
2007



National Capital Region
Transportation Planning Board

Origin: Regional Scenario Planning



Promote dynamic Activity Centers

- Concentrate + Connect + Circulate



Provide a comprehensive range of transportation options

- Focus on providing options other than driving

Enhanced circulation in Activity Centers



- Street connectivity
- Pedestrian and bicycling infrastructure
- Bus services with short-range connections





A boost to local planning





How TLC works

- Consultant-led projects
- Up to \$80K
- 6-8 months
- Planning or design

Promoting regional priorities

- A Range of Transportation Options
- Activity Centers
- Equity Emphasis Areas
- High-Capacity Transit
- National Capital Trail Network

Promoting accessibility through TLC: A few examples...



Congress Heights Pedestrian Access Study

FY 2022 – District of Columbia



National Capital Region
Transportation Planning Board

Low-Income Fare Study

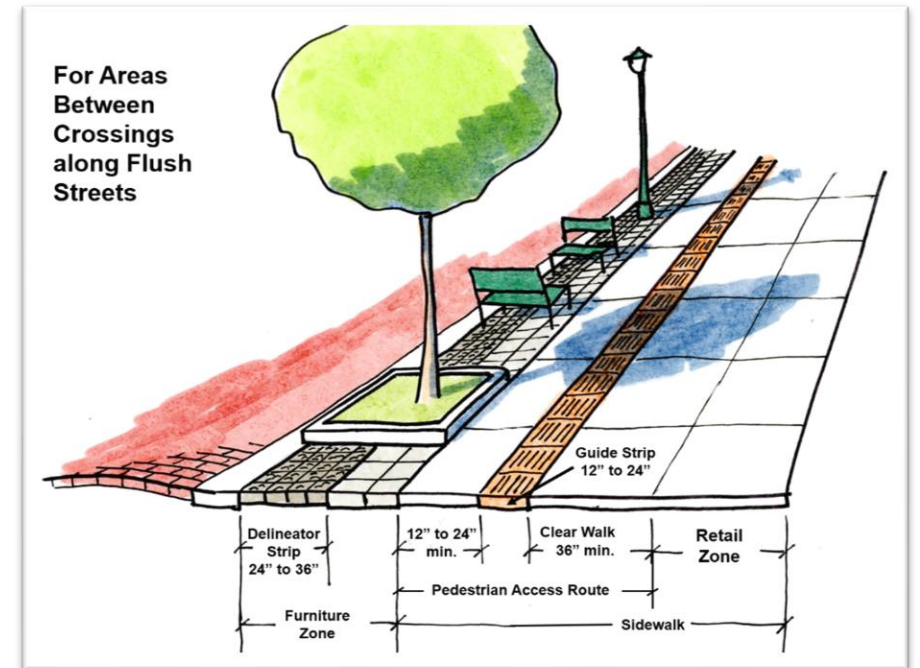
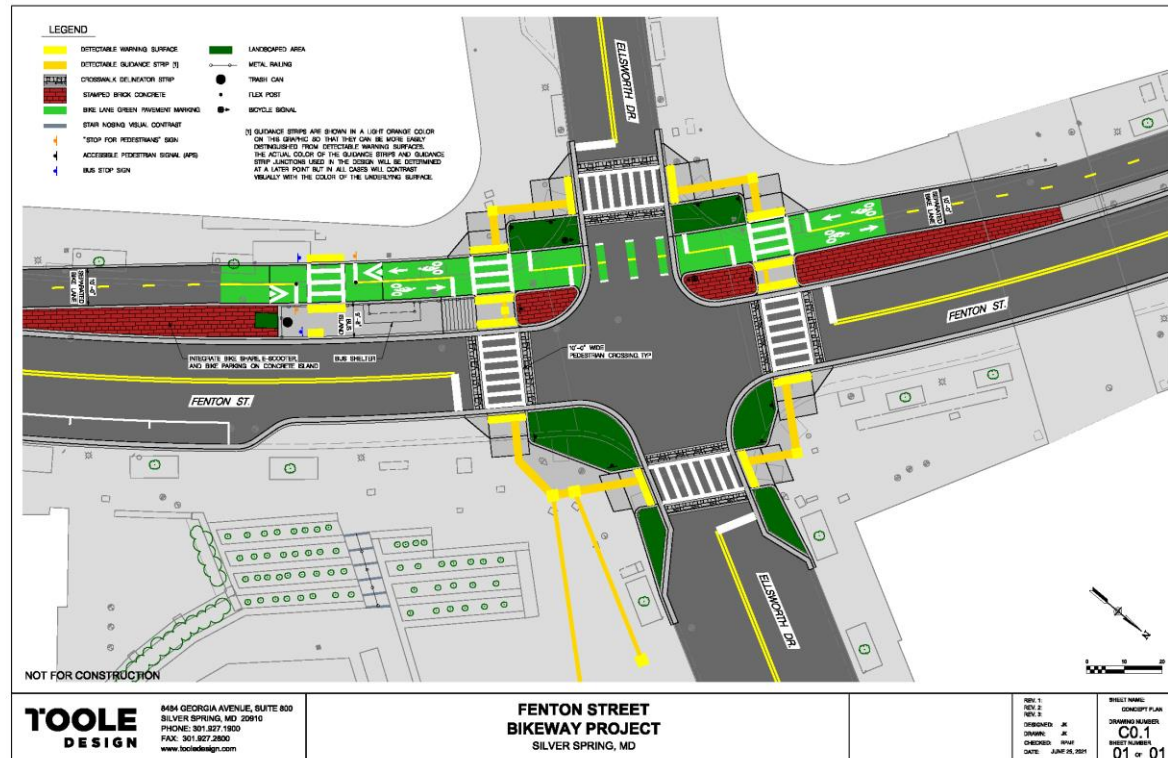
FY 2021 - Alexandria, VA



National Capital Region
Transportation Planning Board

Visually Impaired Urban Navigation Study & Pilot Design

FY 2021 – Montgomery County



All past reports: www.mwcog.org/tlc

TRANSPORTATION
Local Technical Assistance Programs Database (TLC-RRSP-TWR)

This searchable database includes projects funded by three TPB programs—the Transportation Land-Use Connections (TLC) Program, the Regional Roadway Safety Program (RRSP), and the Transit Within Reach (TWR) Program. These local technical assistance programs provide short-term consultant services to local jurisdictions for small planning and preliminary design/engineering projects.

You may use the selection boxes to choose specific parameters or search for a word. Use the eraser button to reset the selection box.

[Return to TLC Overview Page](#), [RRSP Overview Page](#) or the [TWR Overview Page](#)

Jurisdiction: All

Fiscal Year: All

Primary Topic: All

Program: All

Search: All

| Jurisdiction | Fiscal Year | Project Name (link to report) | Description | Primary Topic | Type | Program |
|----------------------|-------------|--|--|--------------------------------|--------------------------------|---------|
| Alexandria, City of | 2023 | Duke Street at S. Fairfax and S. Henry Streets Safety Improvements | Develop design improvements at two Duke Street intersections that will address pressing safety concerns. | Bike/Ped Connectivity & Safety | Design/Preliminary Engineering | RRSP |
| Alexandria, City of | 2023 | Safe Routes to School Walk Audits Phase 2 | Conduct on-the-ground walk audits to develop recommendations for bike/ped safety improvements for five schools. | Safe Routes to School | Planning | TLC |
| District of Columbia | 2023 | Delivery Microhub Feasibility Study | Locate staging areas (microhubs) to facilitate sustainable delivery modes, including bicycle and foot deliveries. Includes best-practice research, development of location selection criteria, and a conceptual implementation plan. | Freight | Planning | TLC |
| District of Columbia | 2023 | Independence Avenue Corridor Study | Make recommendations regarding connectivity, multi-modal use, safety, and the quality of the pedestrian experience along the Independence Avenue corridor south of the National Mall. | Corridor Planning - Multimodal | Planning | TLC |
| Frederick County | 2023 | New Design Road Bikeway Study | Identify options and preliminary costs for a challenging segment of New Design Road that will be a key link in a future bikeway network that will be a key link in the C&O Canal | Trail/Path Planning | Planning | TLC |

Local Technical Assistance Programs | [TLC](#) | [RRSP](#) | [TWR](#)

Filter Projects

Show Projects by Program(s)

0 Selected

View projects for one or more programs.

Show Projects by Type

Show Projects by Topic(s)

Show Projects by Fiscal Year

Show Projects by State

Show Projects by Jurisdiction



John Swanson

Transportation Planner

jswanson@mwcog.org

mwcog.org/tpb

Metropolitan Washington Council of Governments

777 North Capitol Street NE, Suite 300

Washington, DC 20002



National Capital Region
Transportation Planning Board