

EXHIBIT 2

Travel Demand Summary
Modeled Area Trips and Vehicle Miles Traveled (000's)
Average Weekday Traffic (AWDT)

	<u>2002</u>	<u>2011</u>	<u>2020</u>	<u>2030</u>	<u>2040</u>
Transit Trips	1,055.7	1,096.7	1,378.2	1,517.0	1,632.4
Vehicle Trips	19,535.7	22,236.8	24,560.9	26,887.4	28,777.3
VMT	145,504.9	160,327.0	177,817.0	190,672.5	199,741.7

EXHIBIT 3
VOC COMPOSITE MOBILE6.2 FREEWAY RUNNING EMISSION RATES FOR
FAIRFAX COUNTY (2010 CLRP)

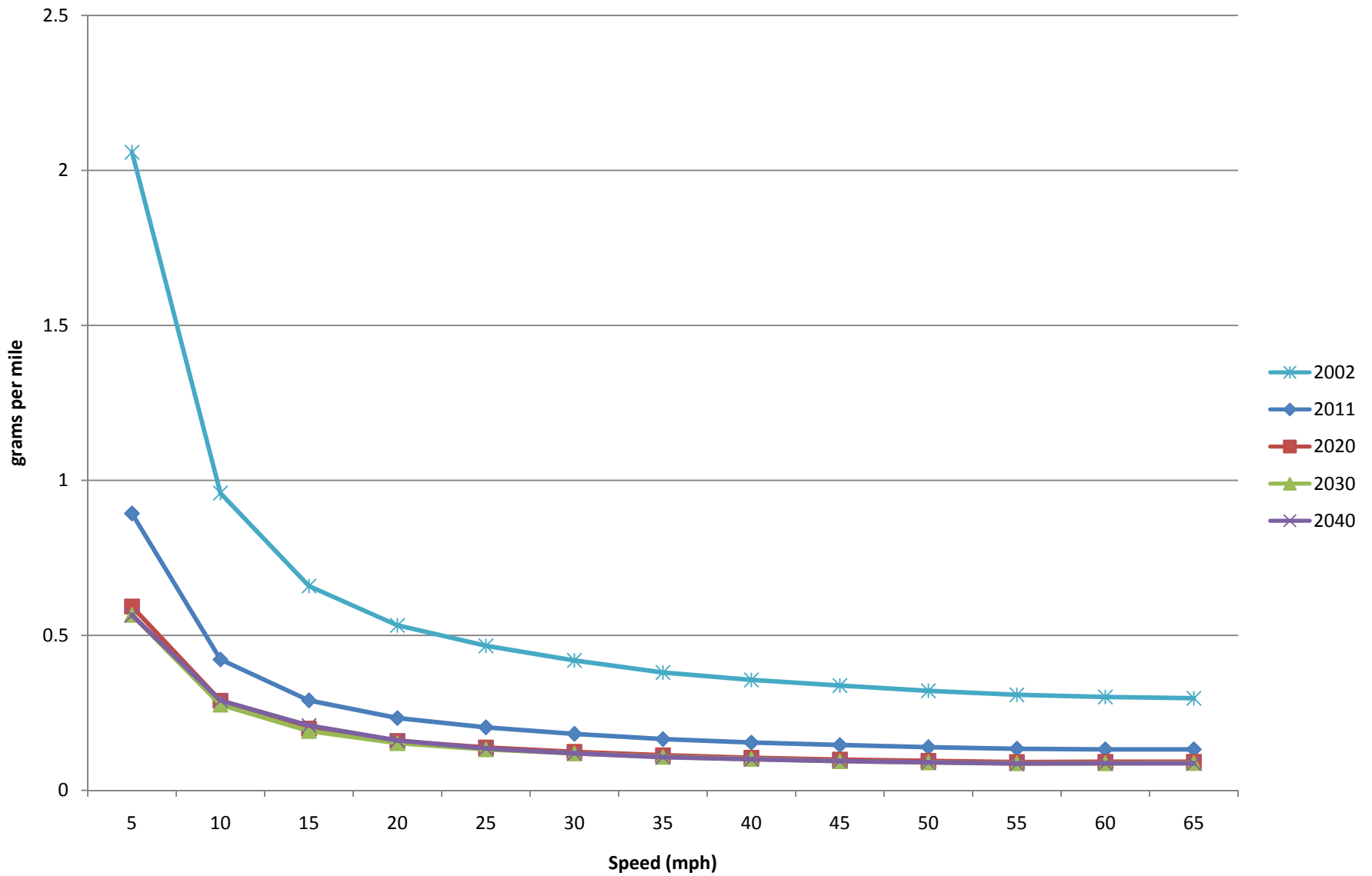


EXHIBIT 4
NO_x COMPOSITE MOBILE6.2 FREEWAY RUNNING EMISSION RATES FOR
FAIRFAX COUNTY (2010 CLRP)

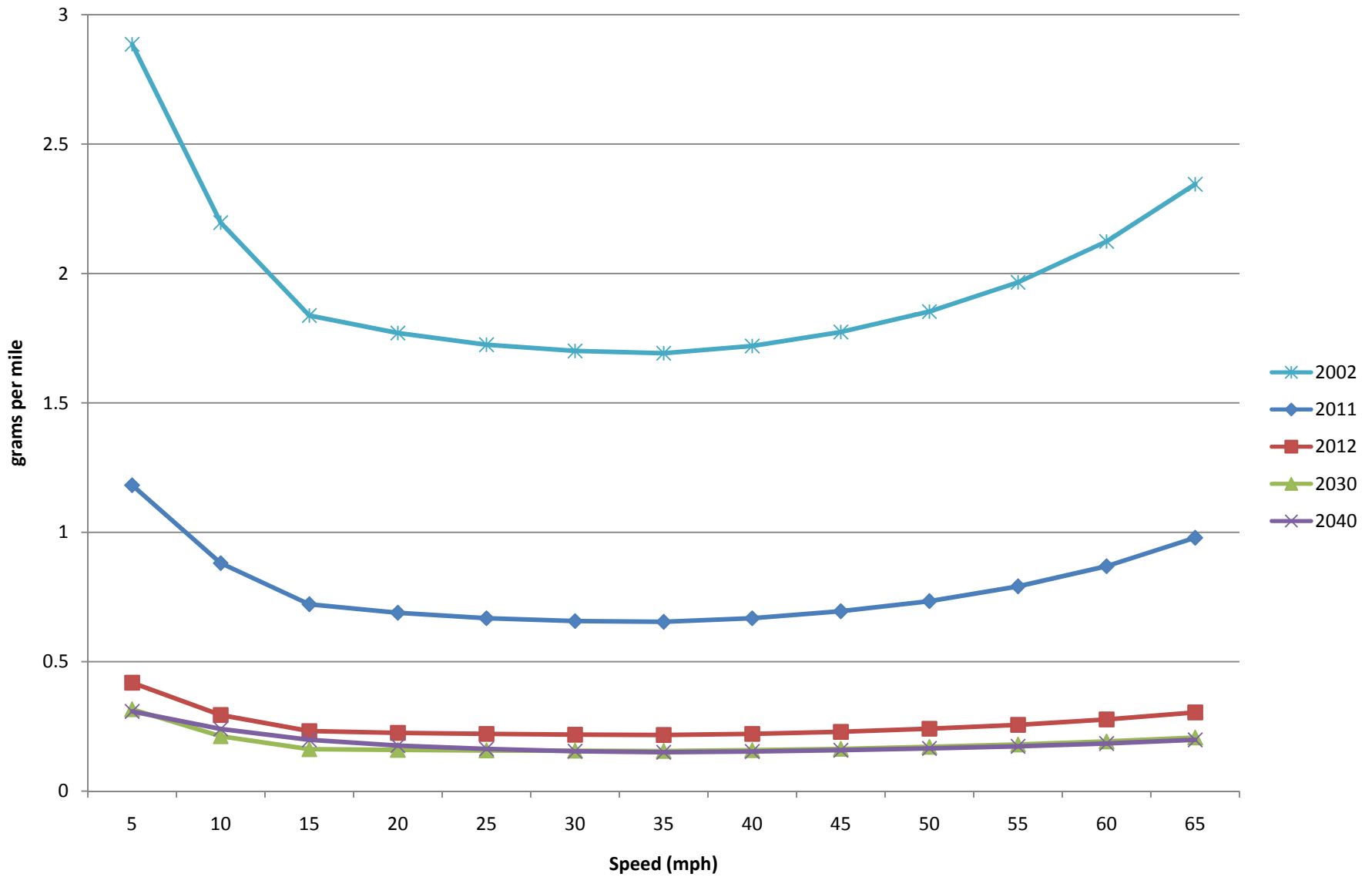


Exhibit 5

DIRECT PM_{2.5} EMISSION RATES FOR FAIRFAX COUNTY (MAJOR ROADS NETWORK)

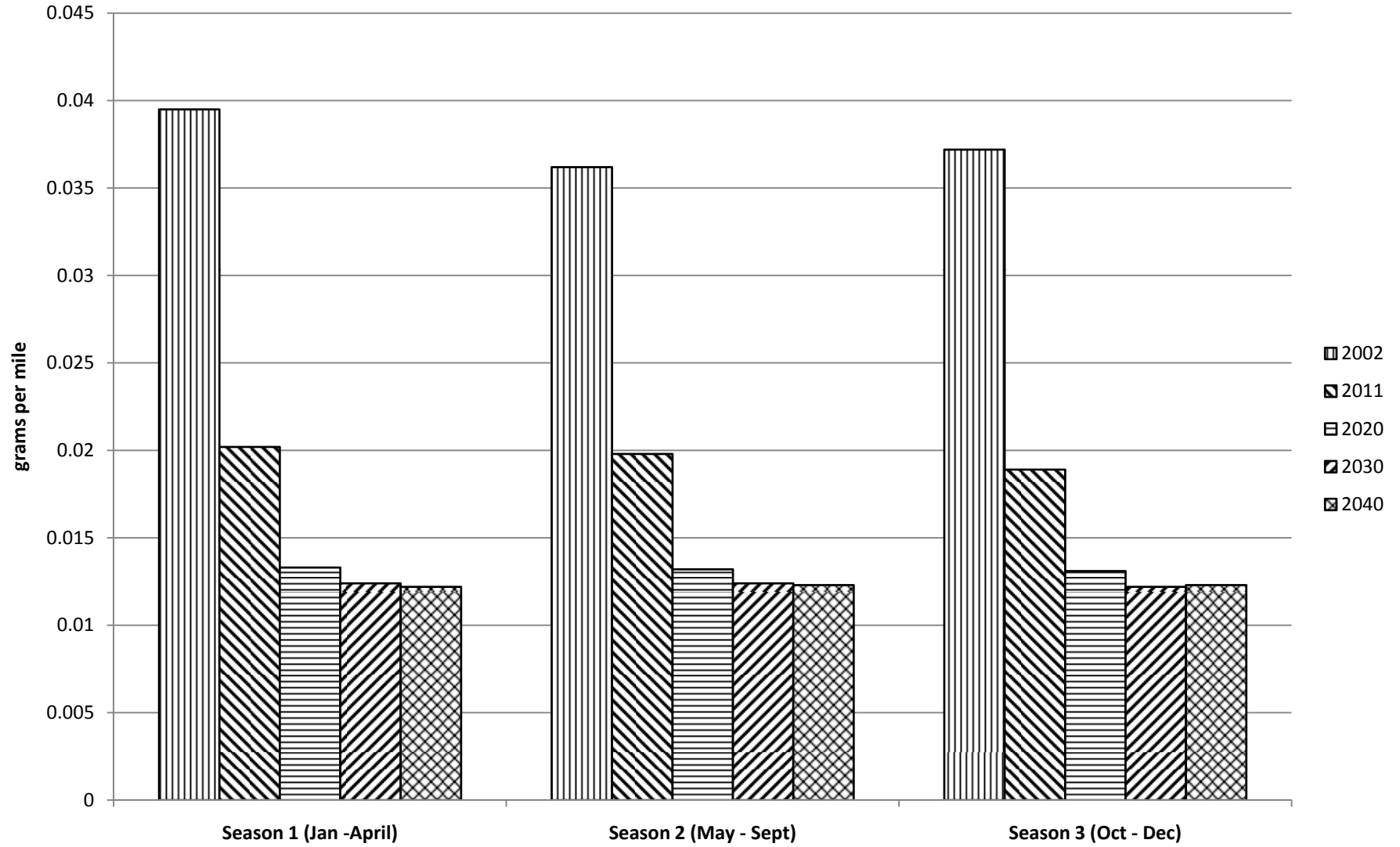


EXHIBIT 6

Mobile Source VOC Emissions for the 1-Hour Ozone Nonattainment Area 2010 CLRP and FY 2011-2016 TIP

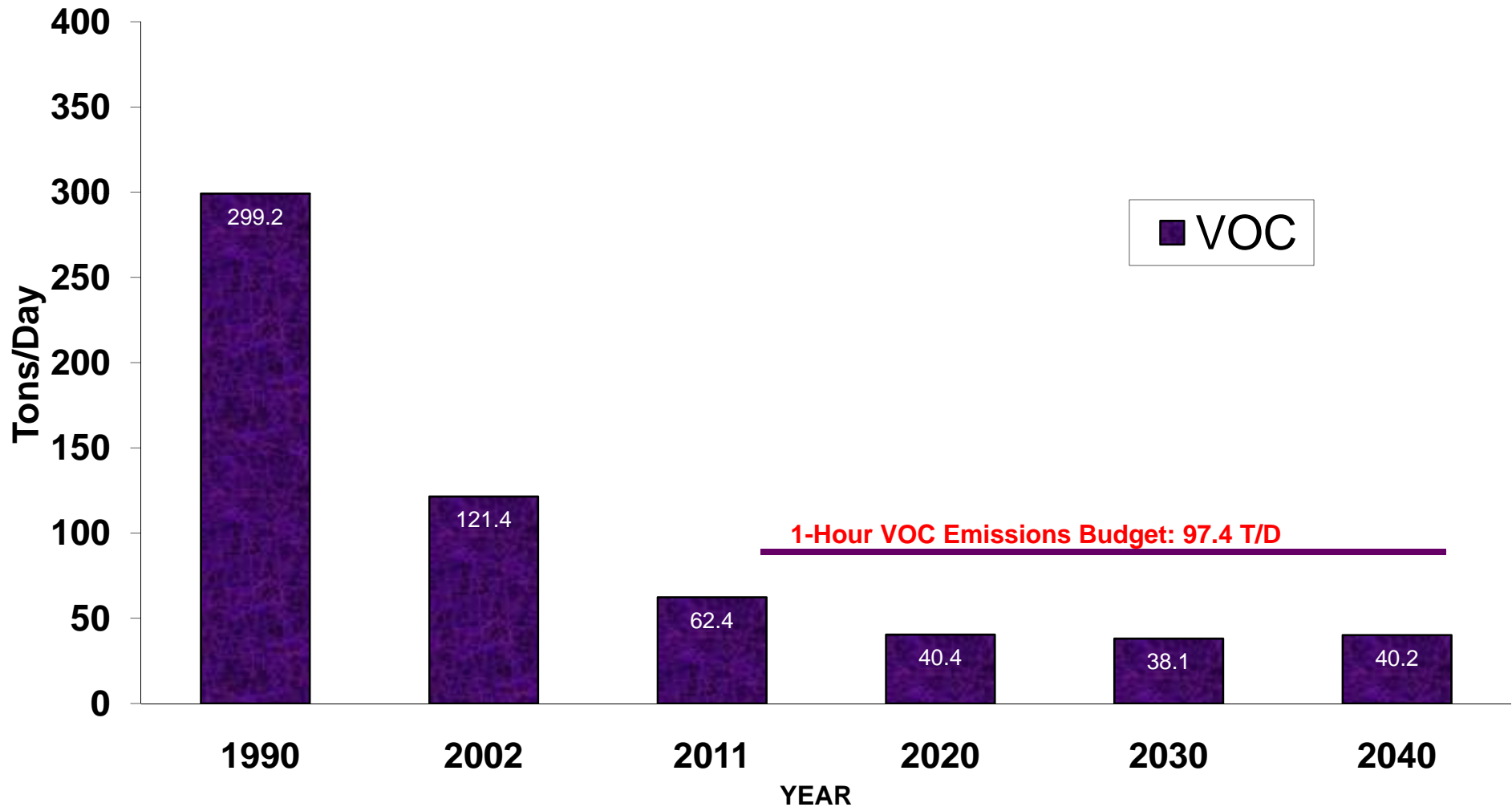


EXHIBIT 7

Mobile Source VOC Emissions for the 8-Hour Ozone Nonattainment Area 2010 CLRP and FY 2011-2016 TIP

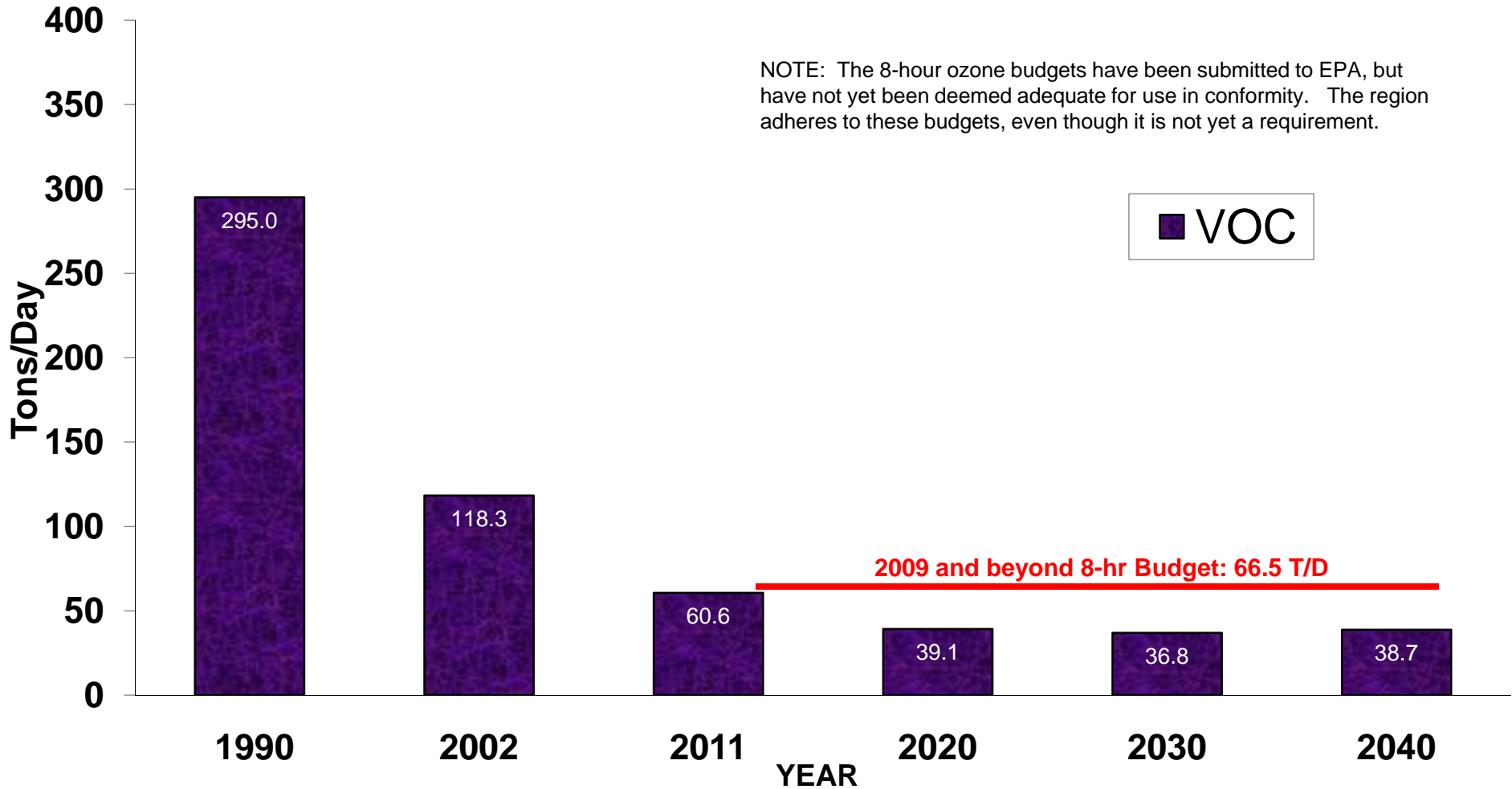


EXHIBIT 8

Mobile Source NOx Emissions for the 1-Hour Ozone Nonattainment Area 2010 CLRP and FY 2011-2016 TIP

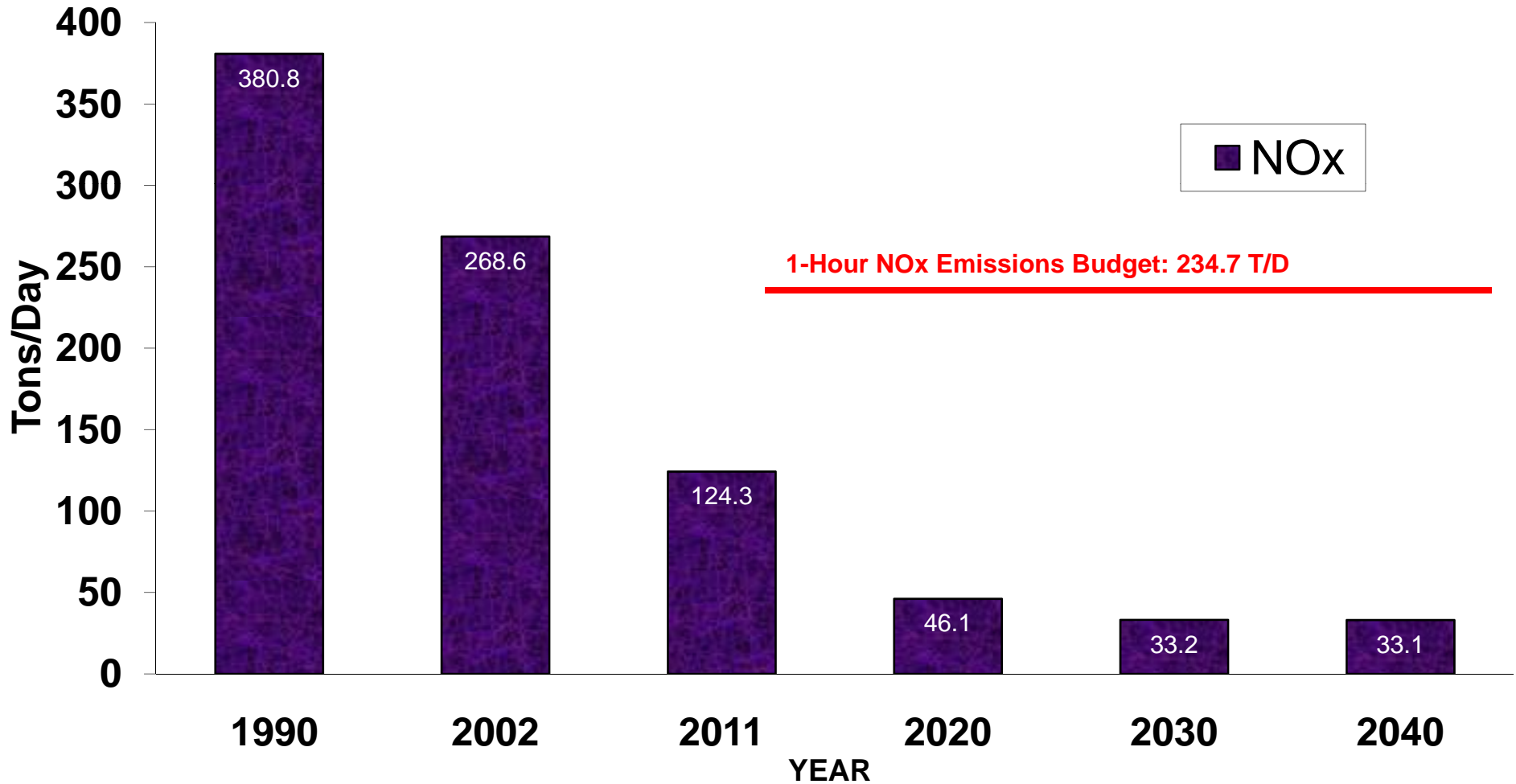


EXHIBIT 9

Mobile Source NOx Emissions for the 8-Hour Ozone Nonattainment Area 2010 CLRP and FY 2011-2016 TIP

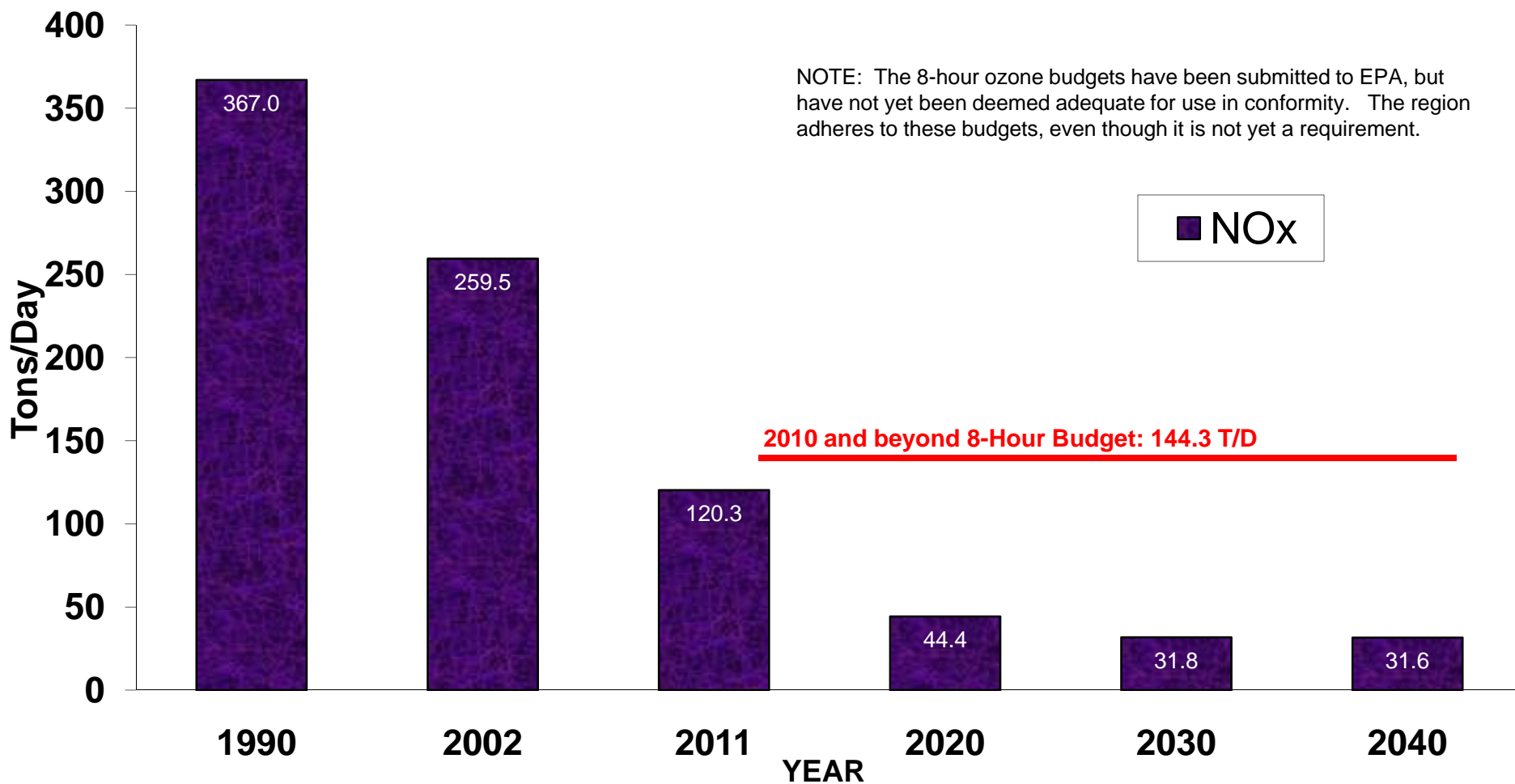


EXHIBIT 10

Mobile Source Emissions

2010 CLRP and FY 2011-2016 TIP

Direct PM_{2.5}

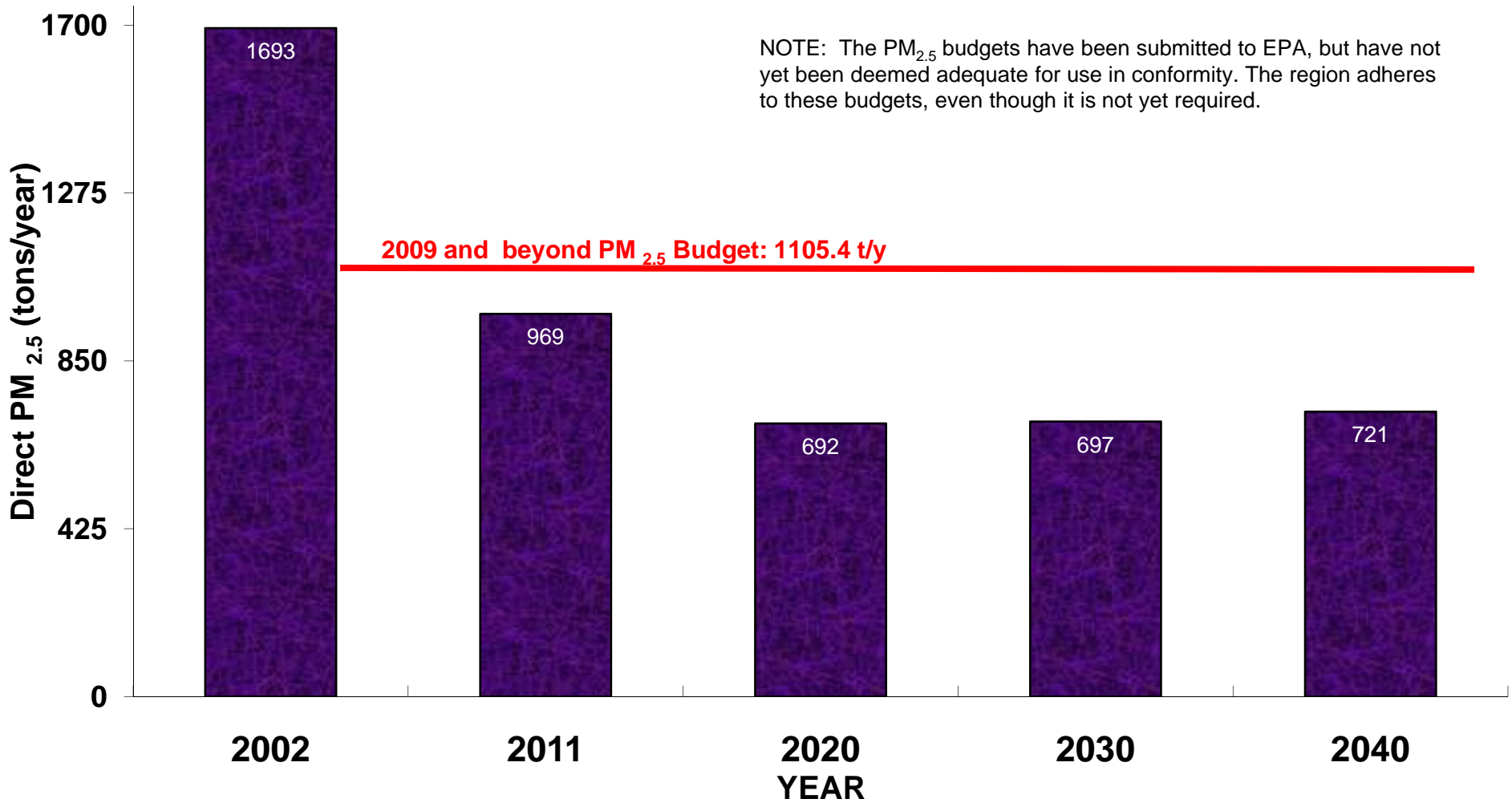


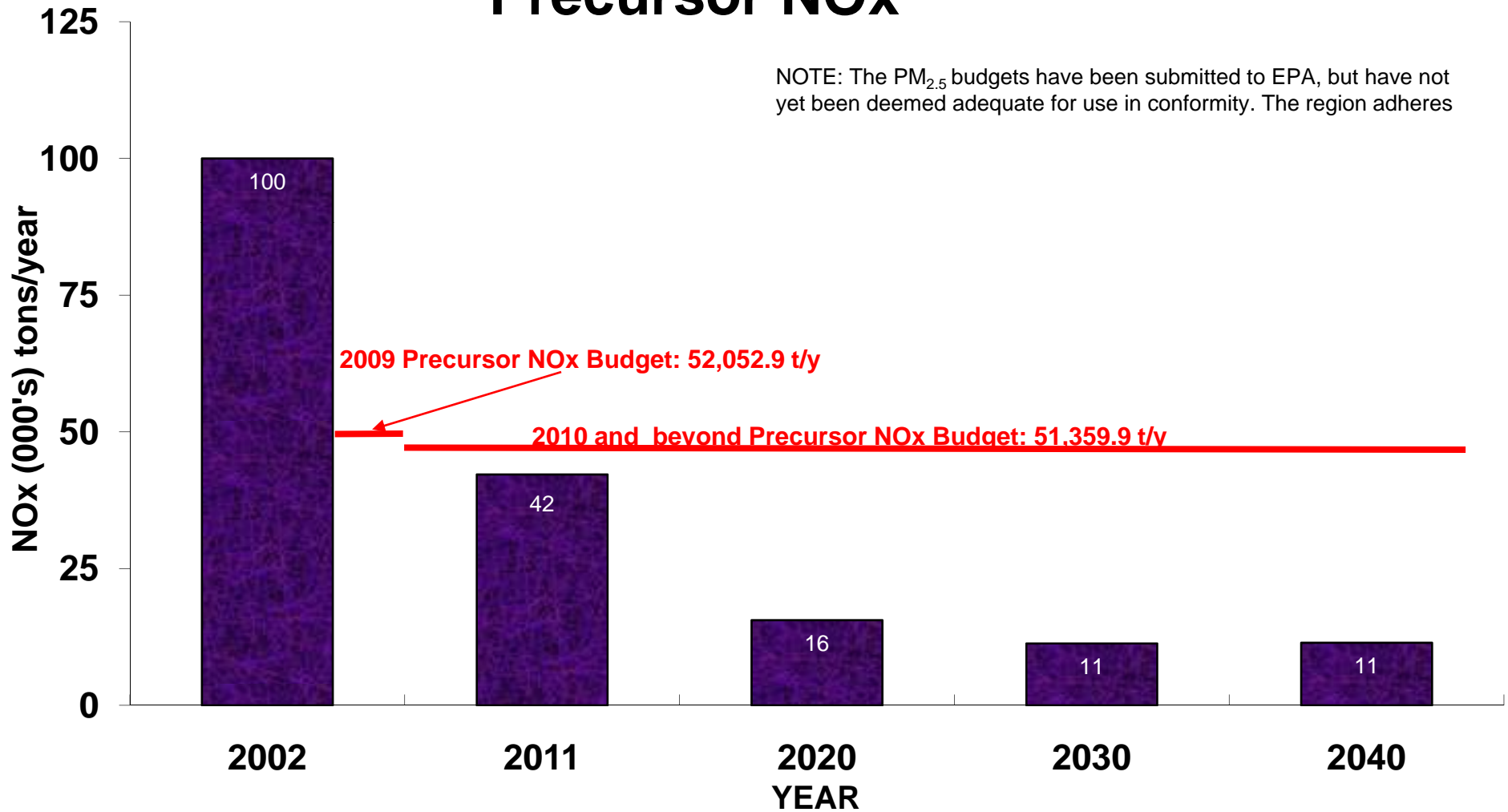
EXHIBIT 11

Mobile Source Emissions

2010 CLRP and FY 2011-2016 TIP

Precursor NOx

NOTE: The PM_{2.5} budgets have been submitted to EPA, but have not yet been deemed adequate for use in conformity. The region adheres



2010 CLRP vs. 2009 CLRP

LAND ACTIVITY

Cooperative Forecasts show 1.5 % fewer households and 2.1 % fewer jobs in 2030:

- Largely responsible for reductions in VMT (-3.5%) and emissions in 2030

TRANSIT FARES

Transit fare increases had a significant effect on transit trips:

- 10 % fewer transit trips in 2020
- 9 % fewer transit trips in 2030