

NORTHERN VIRGINIA SNOW BRIEFING

Metropolitan Washington Council of Governments

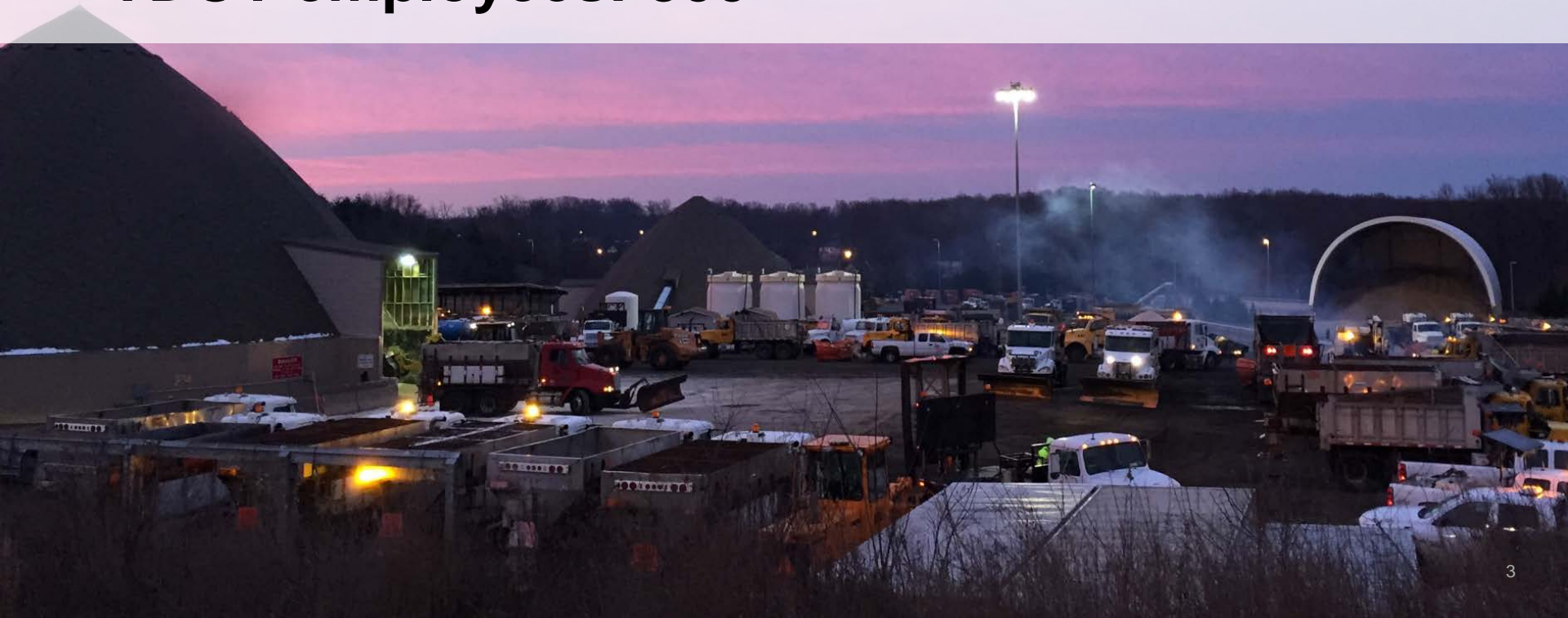
Lauren Mollerup, P.E., CCM, District
Maintenance Engineer

November 1, 2018

Northern Virginia District Background



- **Fairfax, Loudoun, Prince William, and Arlington***
** Arlington maintains own network (secondary roads)*
- **Population: 2.2 million**
- **Commuter lots: 24**
- **Bridges/large culverts: 2,100**
- **Traffic signals: 1,400**
- **VDOT employees: 866**



Total lanes miles: 13,942

- **Interstate: 770 • Primary: 1,791**
- **Secondary: 11,306**
- **Gravel: 318 • Frontage: 78**
- **Subdivision streets: 16,000**





18 maintenance headquarters

Arlington: 1


Fairfax: 9

Loudoun: 4

Prince William: 4



2018-2019 Snow removal budget
\$55.6 million (NOVA District)



Pieces of equipment
3,500 (mostly contracted)

Mobilization Levels 1-5

MOBILIZATION PLAN

Start Time: 04/06/2018 - 12:00 MN - End Time: TBD

EVENT # 20 AU1 NVSNW1820

WEATHER SUMMARY

04/06/18

TODAY: Mostly cloudy, with a high near 67. Southeast wind 5 to 10 mph becoming southwest 12 to 17 mph in the afternoon. Winds could gust as high as 28 mph.

TONIGHT Rain likely after 11pm, mixing with sleet after 5am. Cloudy, with a low around 35. Southwest wind 9 to 15 mph becoming northwest after midnight. Winds could gust as high as 23 mph. Chance of precipitation is 70%. Little or no sleet accumulation expected.

SATURDAY: Rain and snow likely, possibly mixed with sleet before 11am, then rain and snow likely between 11am and 2pm, then a chance of rain after 2pm. Cloudy, with a high near 41. North wind 9 to 11 mph. Chance of precipitation is 60%. New snow and sleet accumulation of less than a half inch possible.

SATURDAY NIGHT: A chance of rain before 8pm. Mostly cloudy, then gradually becoming mostly clear, with a low around 26. North wind 5 to 9 mph. Chance of precipitation is 30%.

A winter local weather emergency has been declared by the DME starting at 12:00 MN on 04/06/18.

EQUIPMENT SHOPS: Equipment shops and the regional dome will not open.

PLAN:

Skeleton Crews will report at 6am and work to 6pm tomorrow 4-7-18. At 6pm the night team will report for overnight freeze-back and will demobilize at 6am pending no issues 4-8-18. Total equipment 45.



Materials at start of season

Salt: 120,000 tons

Sand: 25,000 tons

Brine: 250,000 gallons

**Contractor vehicles are inspected
and fitted for A-frames and spreaders**



Planning for winter weather



- **Forecast reviews** with National Weather Service ([weather.gov/washington/winter](https://www.weather.gov/washington/winter)) and Iteris
- **Mobilization plan** determined, including if incident command will be activated



A few days before a storm

**PRE-STORM
TREATMENT**

**KEEP
BACK
100 FT**

N29

VDOT





- Applied when pavement **temps** are above **20 degrees**, and event **does not begin** as rain
- **Anti-icing treatment** most effective during **first hour** of weather event



2,150 lane miles of interstates and major roads including bridges, ramps, and overpasses are treated with brine and/or liquid magnesium chloride.

Mobilization begins





- **Contractors report, load, and stage trucks in the assigned areas before predicted storm arrival**
- **If 2”+ are forecasted, residents may see trucks begin to stage in neighborhoods.**



**KEEP
BACK
100 FT**

- **Small events:** 12-18 hours before forecasted start
- **Large events:** 18-24 hours before forecasted start



Residents should:

- **Monitor forecasts closely**
- **Plan to telework** and adjust commutes
- **Stay off roads to give plows room**
- **Ensure enough gas, wiper fluid, proper tires, food, water and medicine**
- **Park in driveways** or on odd-numbered side of the street
- **Please be patient**

Stay informed:

- virginiadot.org/novaemergency One-stop shop for links to news releases, Twitter feed, status updates, VDOT Plows, customer service, FAQs and other resources
- [@vadotnova](https://twitter.com/vadotnova) for updates
- 511virginia.org for road conditions and traffic cameras
- vdotplows.org for status of subdivisions once 2" have fallen

The storm begins



Crews work interstates, major roads and main subdivision roads in priority order.



Interstates (66/95/395/495)

High-volume routes (Routes 1, 7, 28, 50, etc.)

Made passable, then bare pavement where possible



Subdivisions

Main roads made passable, then remaining streets and cul-de-sacs



What does “passable” mean?

- An 8- to 10-foot path cleared for emergency vehicle access
- **Drivable with extreme caution**
- Road remains **snow-packed**, will not be **curb-to-curb** or **bare pavement**



Passable lane goals:

- 2-4" of snow: 24 hours
- 4-6" of snow: 48 hours
- 6"+ of snow: 72+ hours




- **One pass for typical storms;** multiple passes and heavy equipment needed for major storms
- **Hills, curves, intersections sanded** to help provide traction
- Driveways, mailboxes, and hydrants: **crews asked to be mindful** but blocking can be an unintended consequence



Additional priorities:

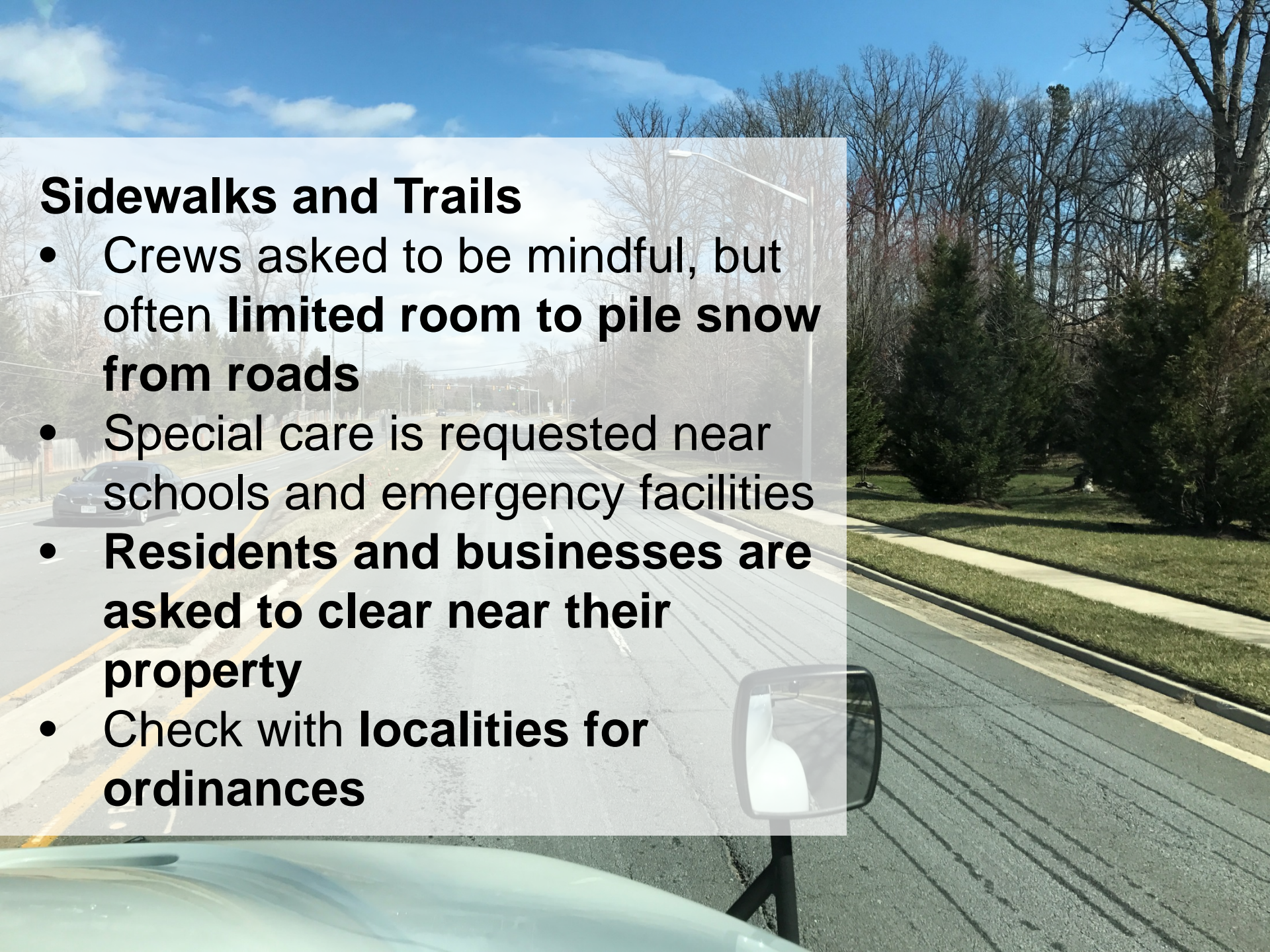
- Getting the roadways **as safe as possible**
- **Shoulders, ramps, turn lanes, intersections**
- **12,000** park-and-ride spaces



- 
- **Monitors:** Staff inspect routes for quality control and customer calls
 - Maps marked complete when a **driver reports back and monitors have spot-checked**
 - **Once roads are made passable,** call center logs inquiries to investigate
 - **Automatic Vehicle Locator (AVL) plow-tracking can help verify,** provide data for inquiries

Sidewalks and Trails

- Crews asked to be mindful, but often **limited room to pile snow from roads**
- Special care is requested near schools and emergency facilities
- **Residents and businesses are asked to clear near their property**
- Check with **localities for ordinances**



After the storm





- **Demobilization takes hours**
- Trucks must be **offloaded of materials and spreaders removed**
- Residents may see **trucks queued around area headquarters**



Area headquarters crews restock materials continuously



Customer Service Center

- my.vdot.virginia.gov or 800-FOR-ROAD (367-7623) to report safety concerns
- **Please wait a few days after storm ends** to report roads as “missed.” Once maps have been completed, calls will be mapped and sent to local areas to revisit.



Incident Management Open House



Saturday, Nov. 10 || 10 a.m. to 2 p.m.
vdotopenhouse.eventbrite.com

Questions?

