



Ozone Season Summary

2013

Sunil Kumar

MWAQC

May 22, 2013



Ozone Season Summary

Peak 8-Hour Ozone Concentrations (ppb)

Since April 1, 2013, there have been:

12 Code Yellow Days

37 Code Green Days

April

Sun	Mon	Tues	Wed	Thurs	Fri	Sat
	1	2	3	4	5	6
	52	53	52	53	59	53
7	8	9	10	11	12	13
61	62	60	64	68	38	53
14	15	16	17	18	19	20
56	49	54	50	46	38	50
21	22	23	24	25	26	27
54	49	44	56	56	62	70
28	29	30				
71	52	49				

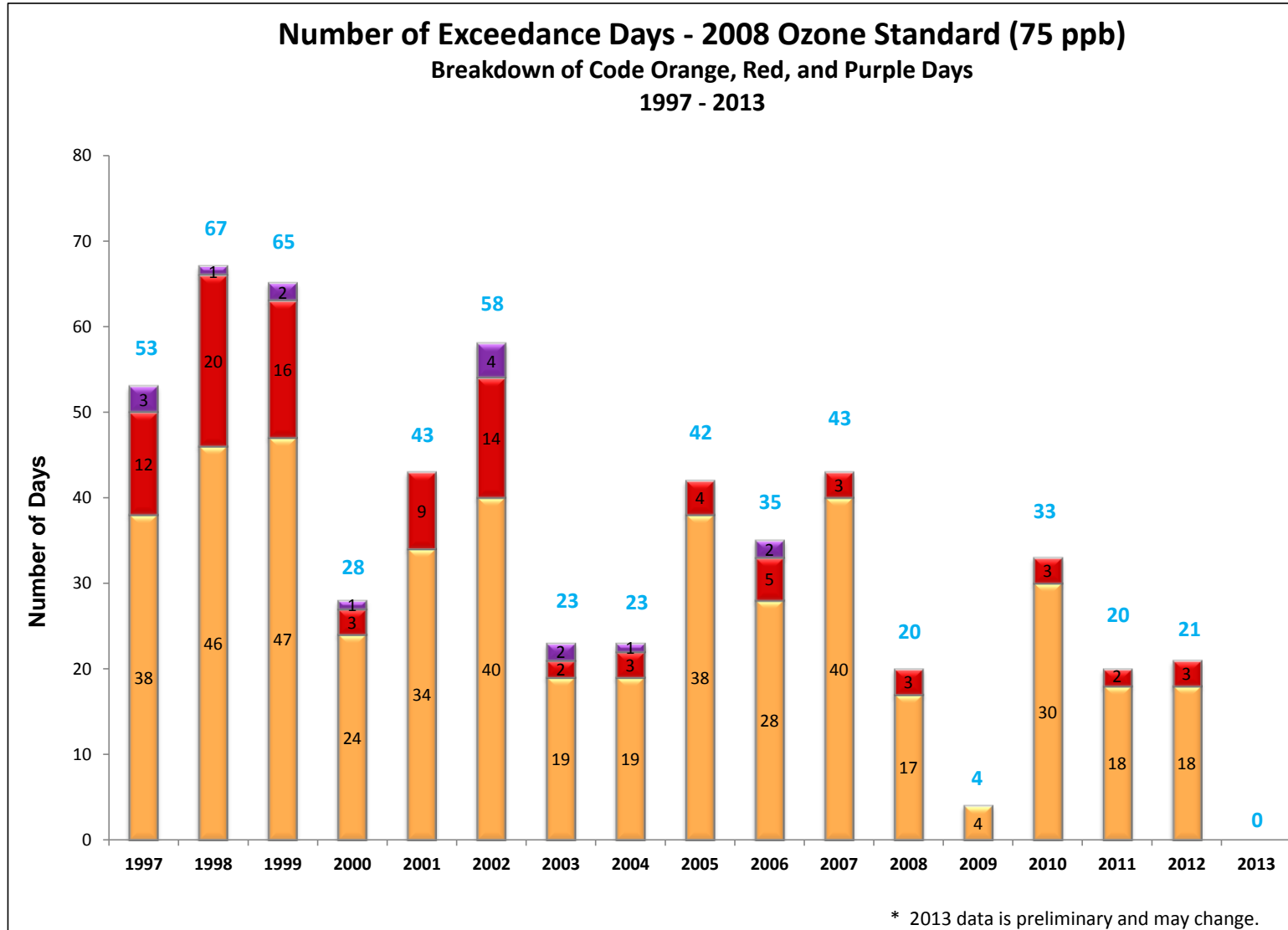
May

Sun	Mon	Tues	Wed	Thurs	Fri	Sat
			1	2	3	4
			59	46	51	50
5	6	7	8	9	10	11
58	35	36	48	46	60	47
12	13	14	15	16	17	18
48	49	55	72	62	71	51
19	20	21	22	23	24	25
37						
26	27	28	29	30	31	

•Analysis is based on draft data until May 20, 2013. Data is subject to change.



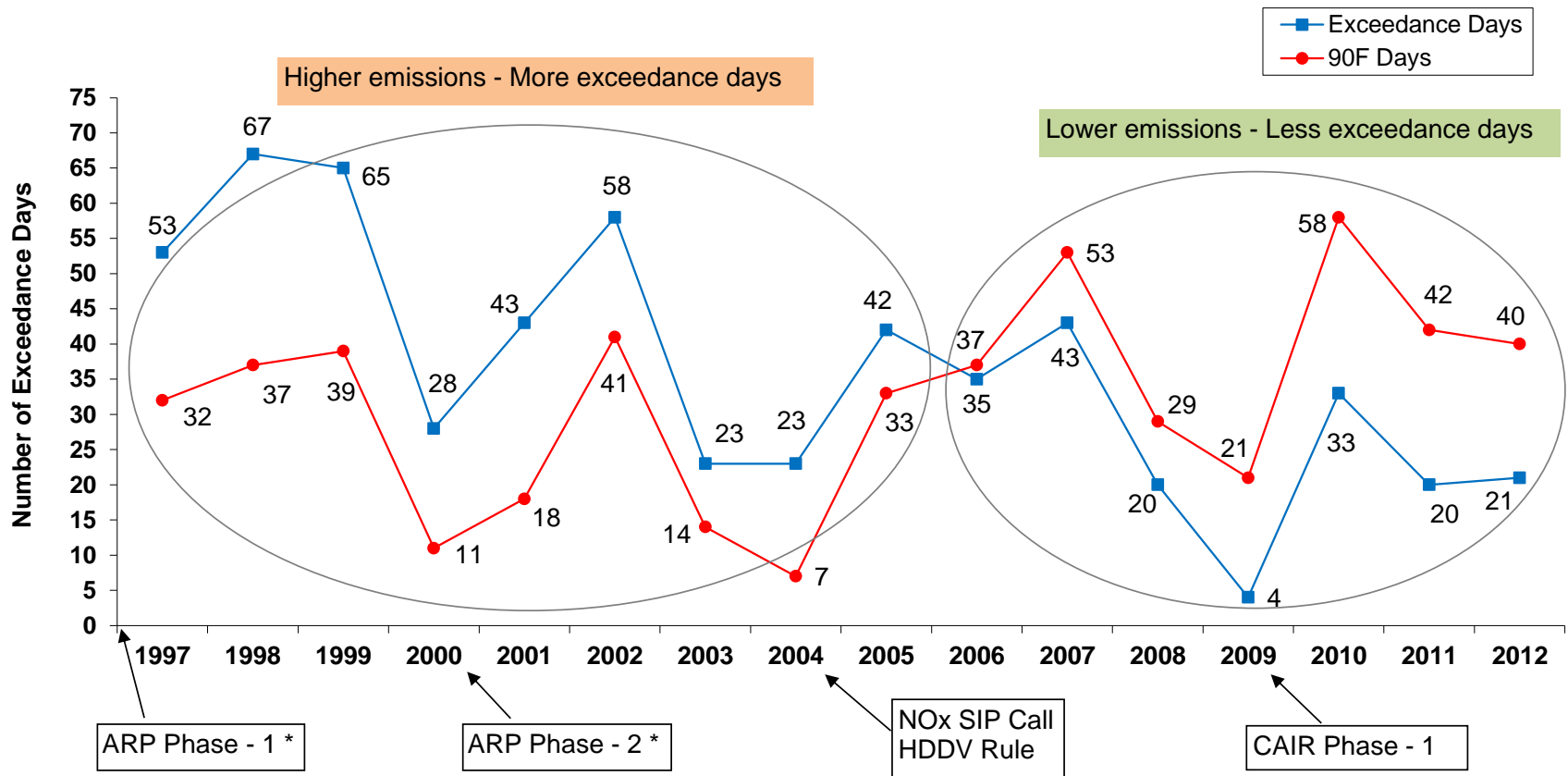
Ozone Exceedance Trend



* 2013 analysis is based on draft data as of May 20, 2013 and is subject to change.



Exceedance of 2008 Ozone Standard and 90°F Days



* ARP = Acid Rain Program

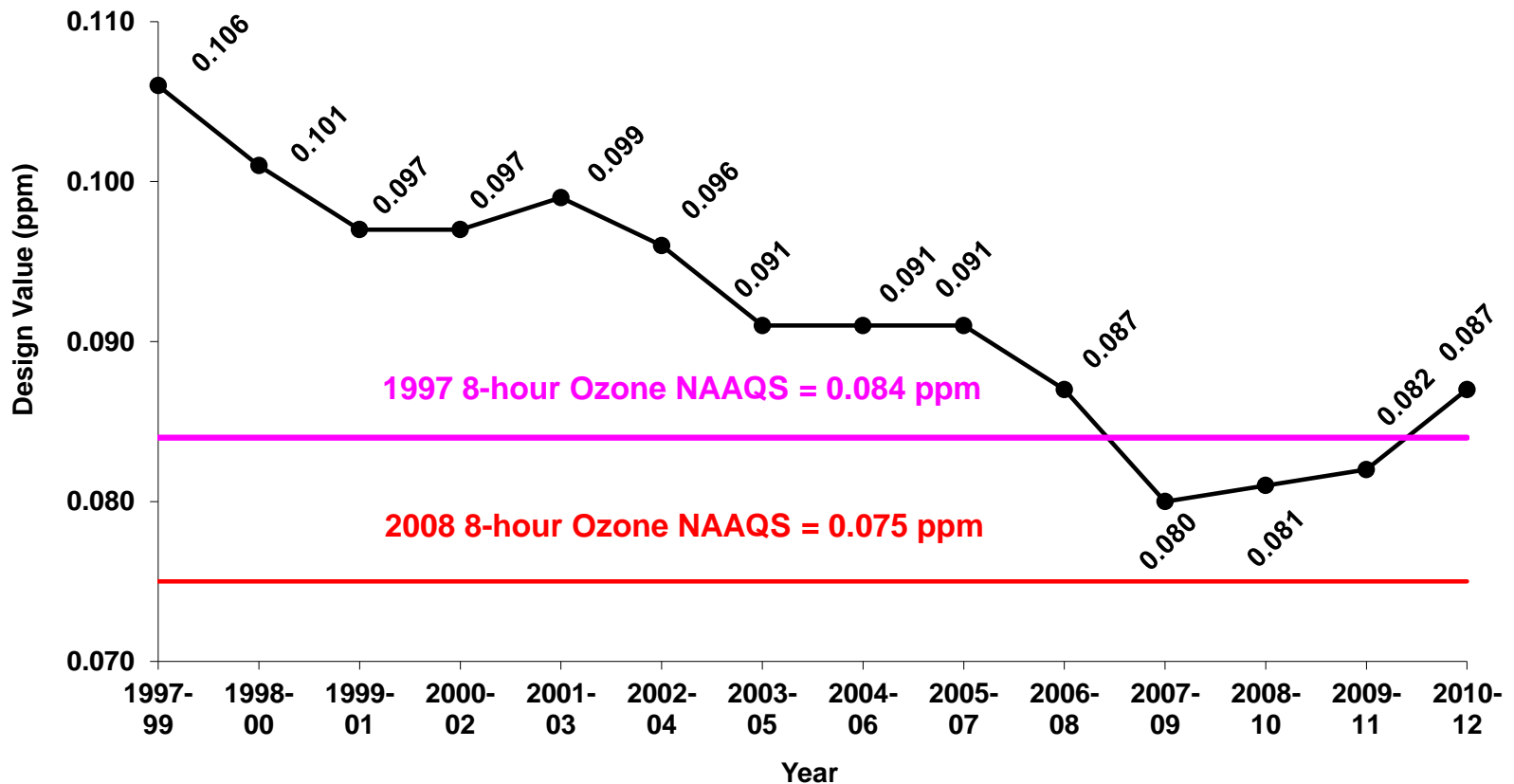
- Phase 1 : 1996
- Phase 2 : 2000

* Analysis is based on draft data as of May 20, 2013 and is subject to change.



Ozone Design Value Trend

8-hour Ozone Design Value Washington, DC-MD-VA Ozone Nonattainment Area (1999-2012)



* Design value = 3-year average of 4th highest daily maximum 8-hour average ozone concentrations. 2012 data is draft and may change.



Fine Particle Summary

24-Hour PM2.5 Concentrations (ug/m3)

April

Sun	Mon	Tues	Wed	Thurs	Fri	Sat
	1	2	3	4	5	6
	15.1	7.3	9.4	7.9	14.0	8.8
7	8	9	10	11	12	13
10.1	14.8	14.0	19.1	14.9	13.4	11.9
14	15	16	17	18	19	20
11.6	12.4	12.1	14.8	14.8	9.0	7.3
21	22	23	24	25	26	27
7.9	6.7	13.0	13.6	9.0	11.6	14.3
28	29	30				
11.4	7.1	5.3				

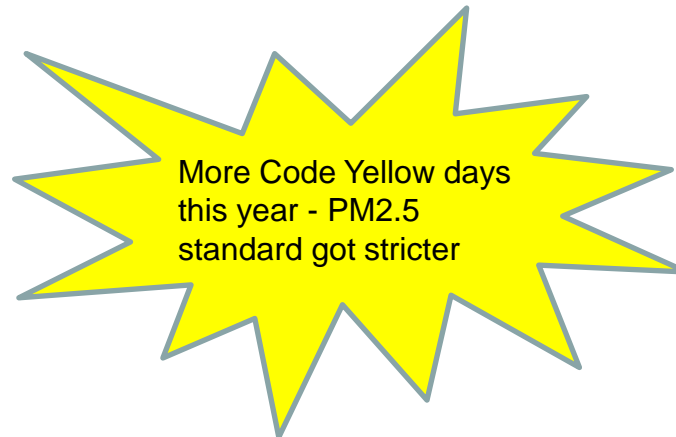
May

Sun	Mon	Tues	Wed	Thurs	Fri	Sat
			1	2	3	4
			7.5	5.5	7.3	5.6
5	6	7	8	9	10	11
8.8	10.1	6.2	9.5	10.3	15.5	13.2
12	13	14	15	16	17	18
7.8	5.4	7.7	14.1	17.3	11.3	7.5
19	20	21	22	23	24	25
8.7						
26	27	28	29	30	31	

Since April 1, 2013, there have been:

18 Code Yellow Days

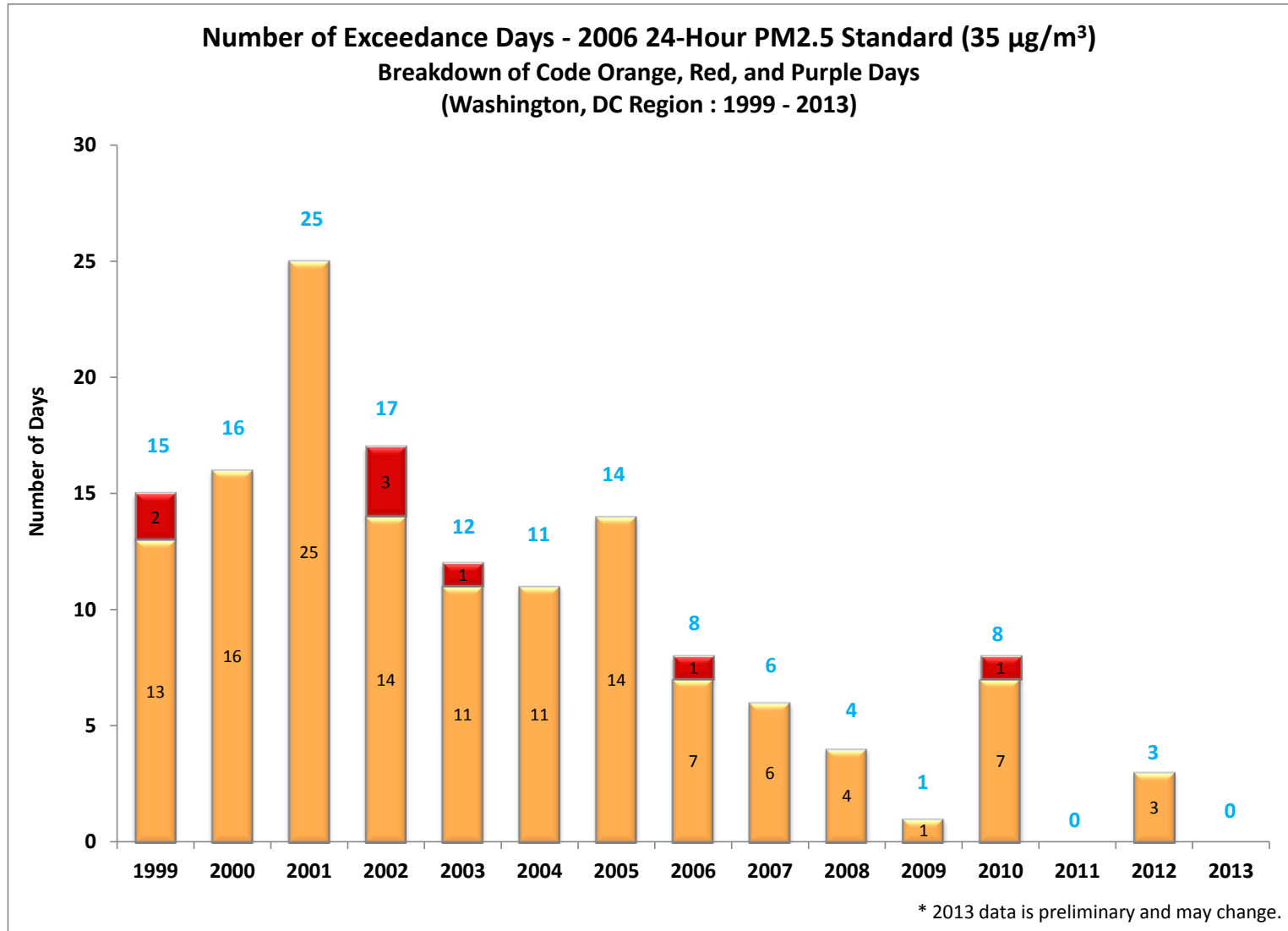
31 Code Green Days



* Analysis is based on draft data until May 20, 2013. Data is subject to change.



PM2.5 Exceedance Trend

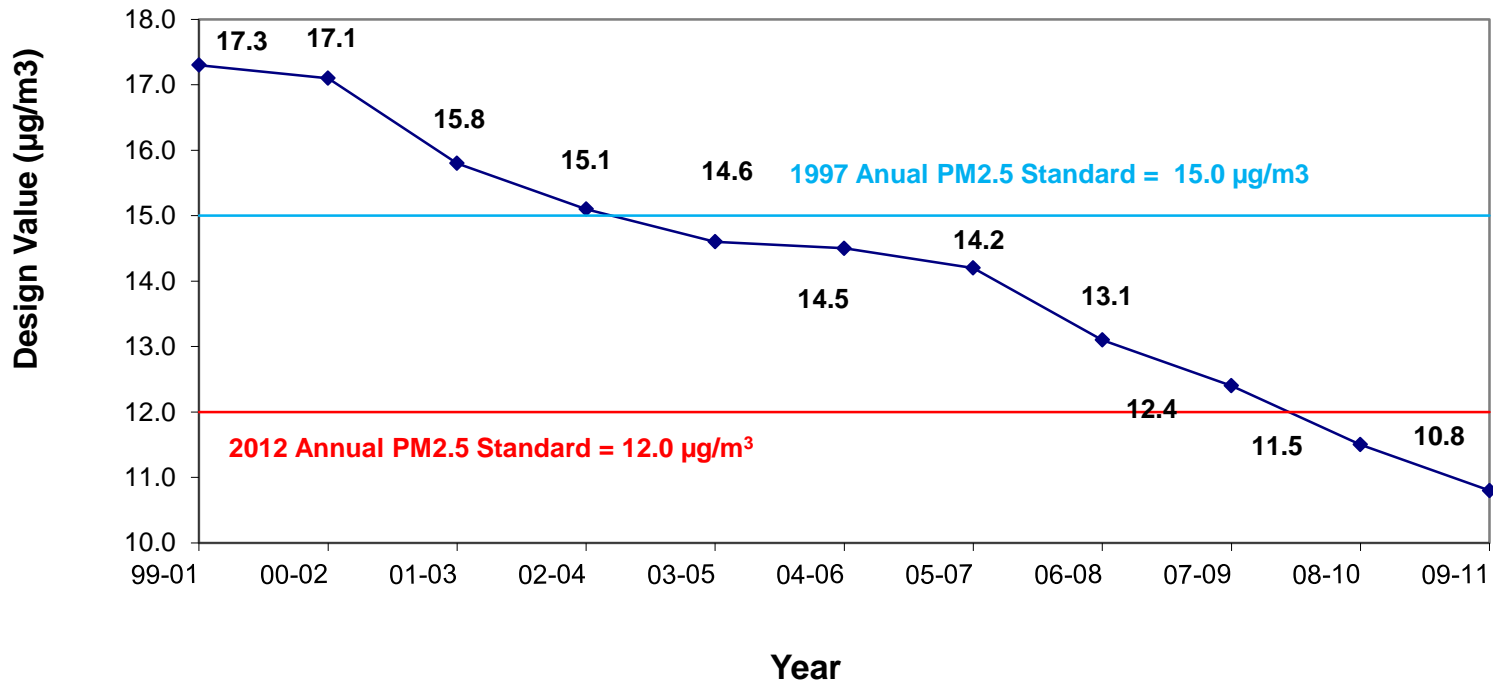


* 2013 analysis is based on draft data as of May 20, 2013 and is subject to change.



Annual PM_{2.5} Design Value Trend

Annual PM_{2.5} Design Value Washington, DC-MD-VA Nonattainment Area (1999-2011)



* Design value = 3-year avg of annual mean PM_{2.5} concentrations.



Air Quality Forecasting

- Air Quality Forecasting: April 15-Sep 30
- AQ Forecast Web-sites:
<http://www.mwcog.org/environment/air/forecast/>
<http://www.cleanairpartners.net>
- AQ Forecast Mobile Apps: Android & iPhone
- Sign up for AirAlerts
– <http://www.cleanairpartners.net>
- Weatherline: 202-589-1212