

DELINEATION OF CENSUS TAZs FOR THE REGION

Travel Forecasting Subcommittee

Martha Kile

May 20, 2011

Census Transportation Planning Products

- ▣ Set of special tabulations taken from the Census designed for Transportation Planning
 - Residence data – worker & household characteristics
 - Place of Work data – worker characteristics
 - Journey to Work data
- ▣ Delineation of Census TAZs
 - Allows for summaries to be delivered based on our zone system
 - Used as a benchmark for the surveys done by COG/TPB

When is a TAZ not a TAZ?

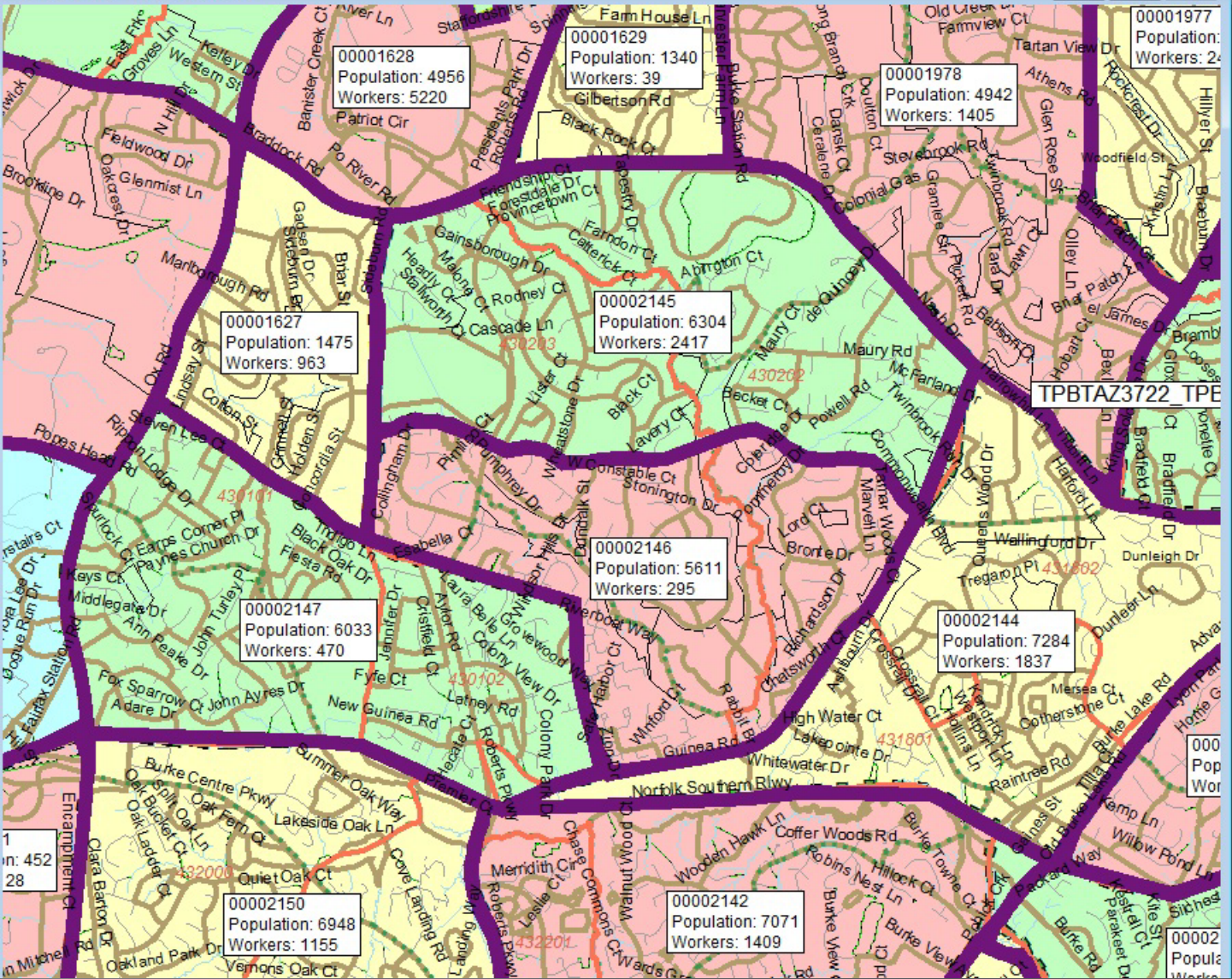
- ▣ Two Different TAZ Systems
 - COG/TPB TAZs
 - ▣ Used for modeling
 - ▣ smaller
 - Census TAZs (CTPP Zones)
 - ▣ American Community Survey (ACS) Data
 - Multi-year Data
 - Small sample size
 - ▣ Bigger is better
 - Smaller zones have smaller sample size and higher sample error

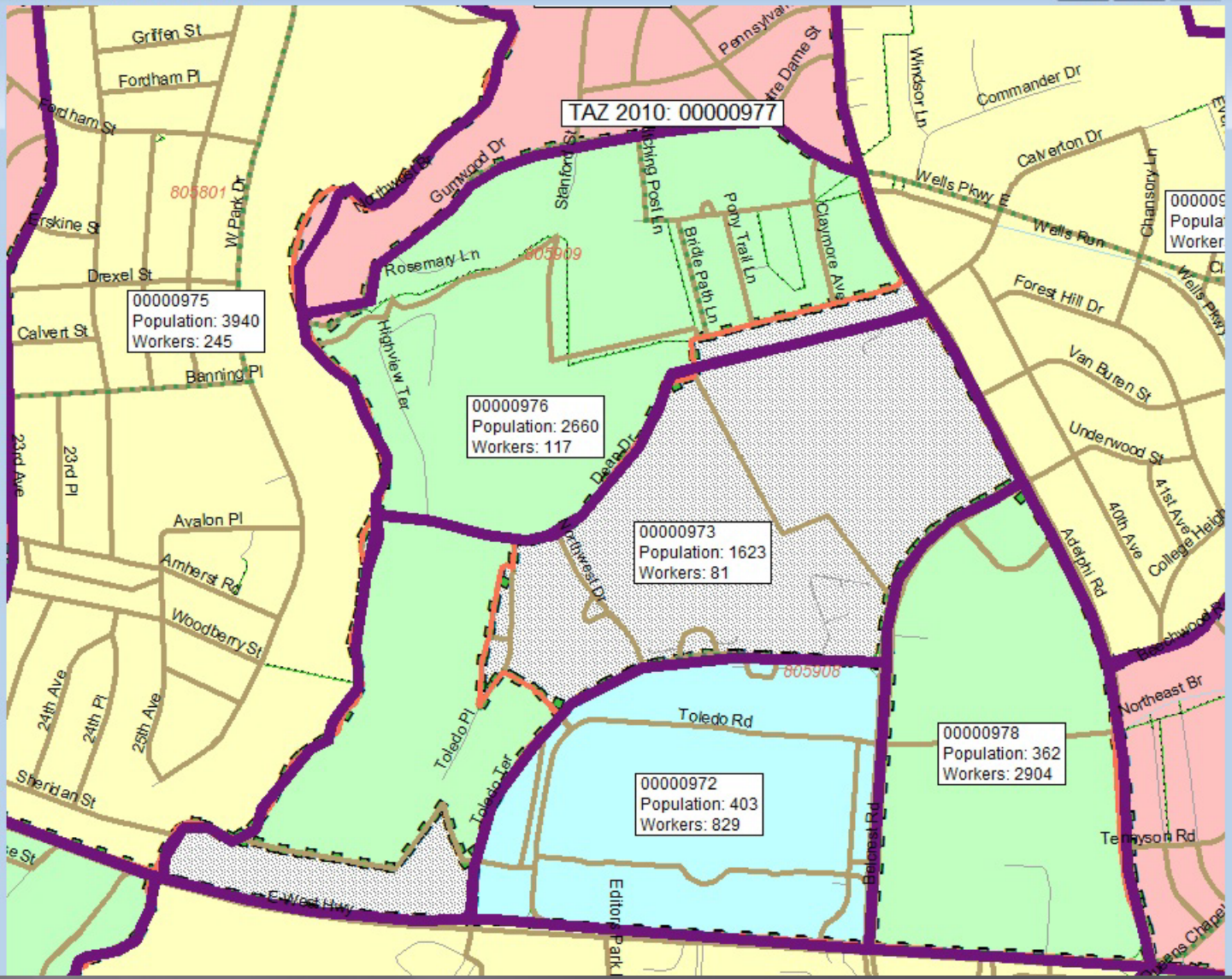
TAZ Delineation Process

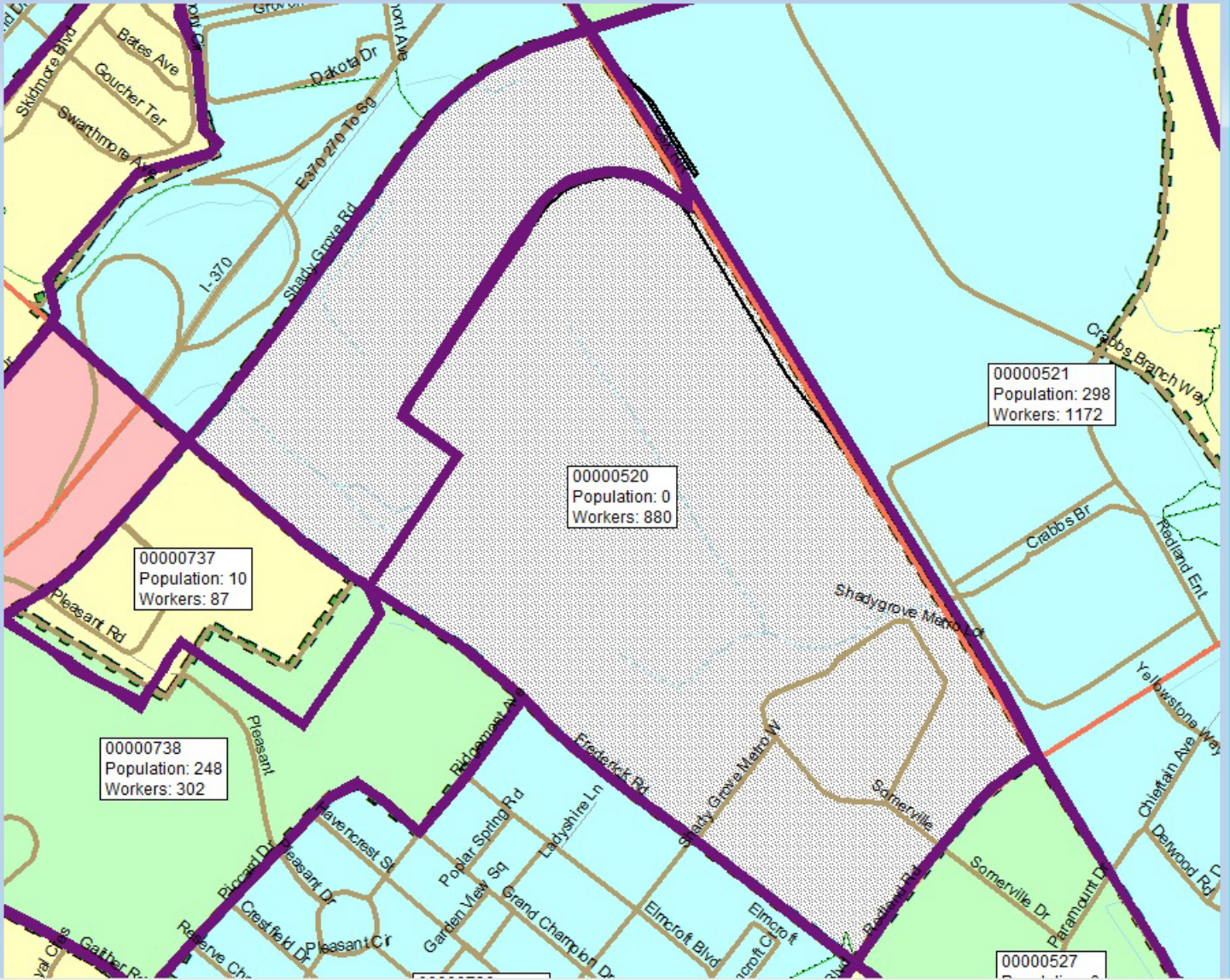
- ▣ MPOs and States were provided special TAZ delineation software.
 - Delivered with Census Blocks for coverage area
- ▣ Census TAZ Requirements
 - Created from aggregations of Census Blocks
 - All Census Blocks within the area must be assigned
- ▣ Census TAZ Recommendations
 - Population or Worker estimates 1,200 or more
 - Contiguous
 - Compact

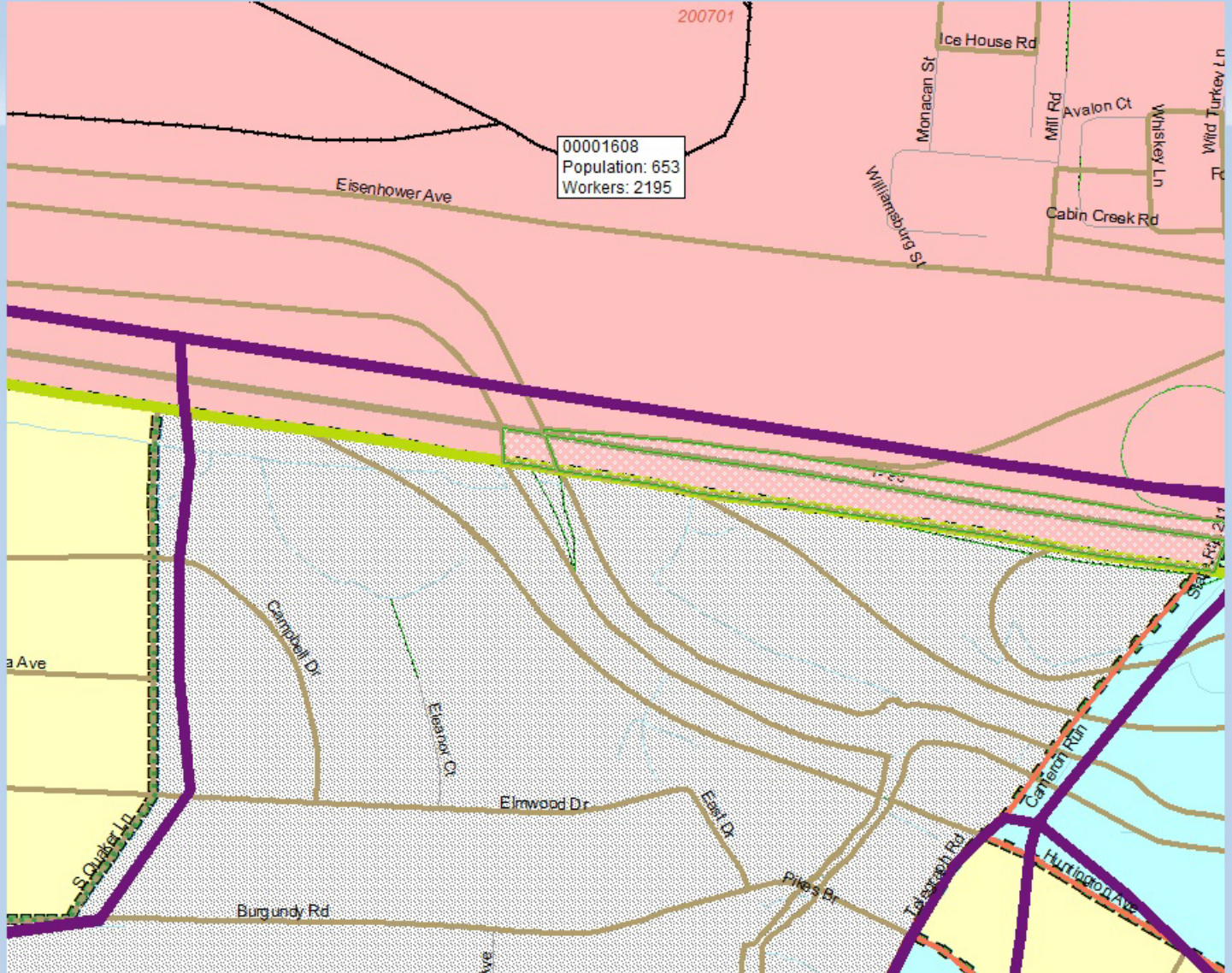
TAZ Delineation Steps

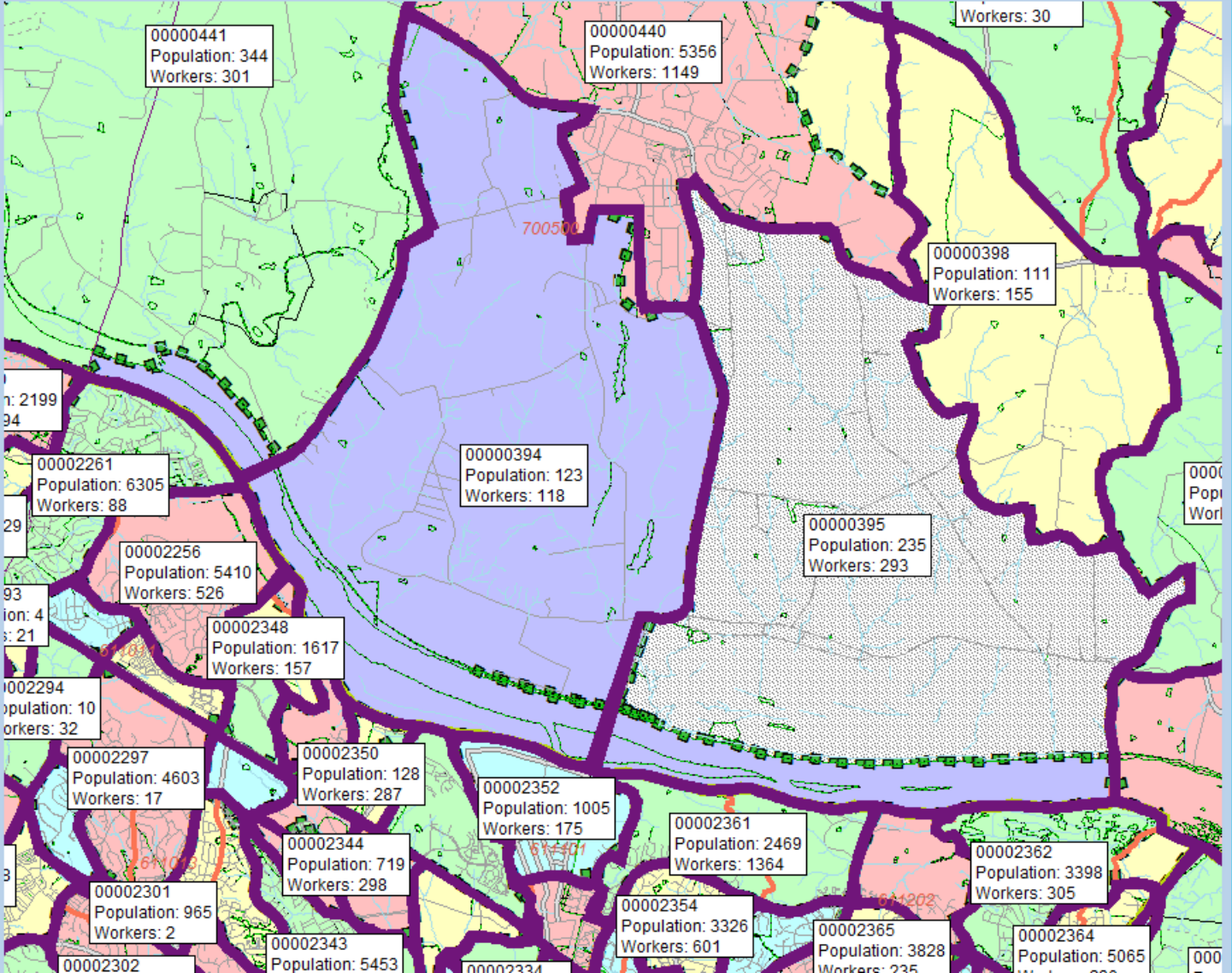
- ▣ Overlay with 3722 TAZs
 - Assign Census Blocks to TAZs based on percent of block in TAZ
- ▣ Import Block Equivalence Table
- ▣ Run Verification tools to resolve issues
 - Unassigned areas
 - Sliver issues
 - Contiguity Issues
- ▣ Determine where Zones are missing
- ▣ Aggregate TAZs







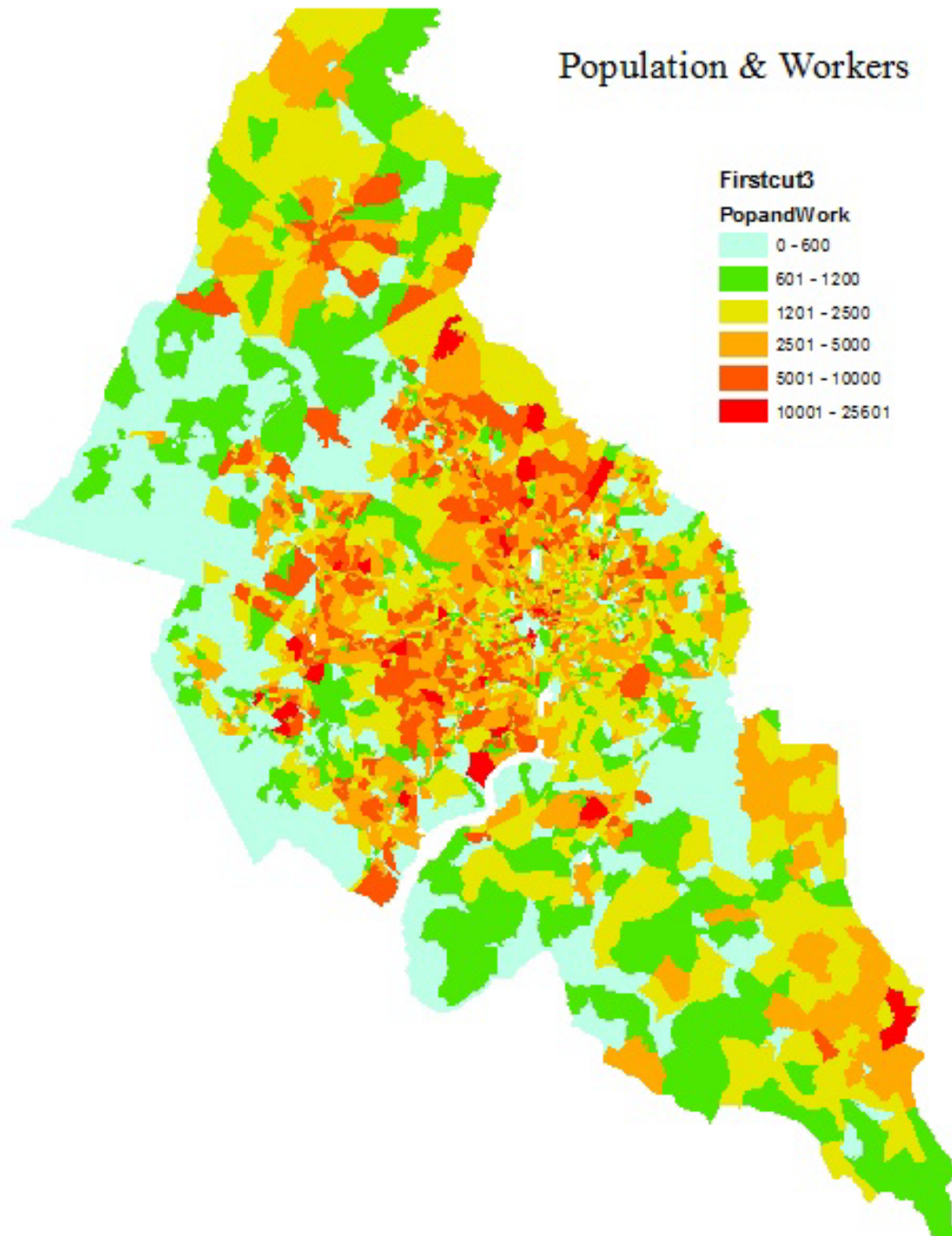
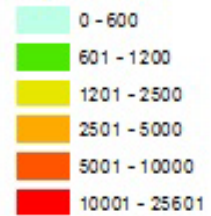




Population & Workers

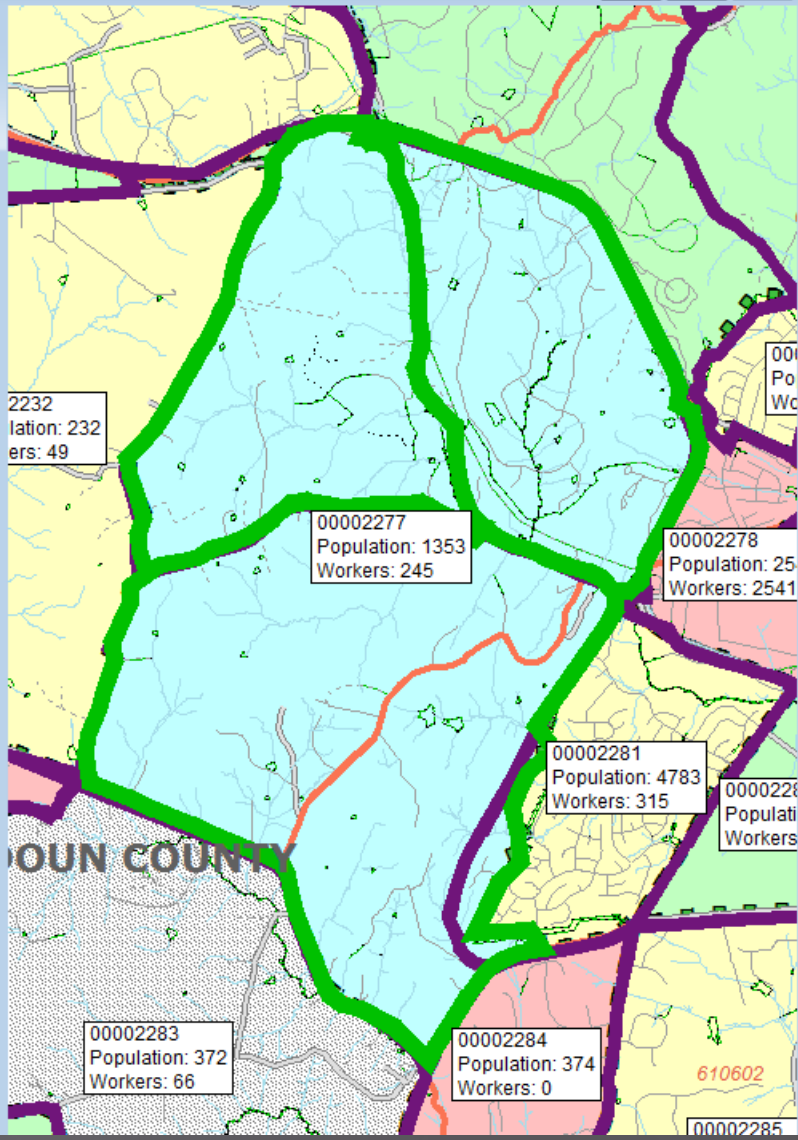
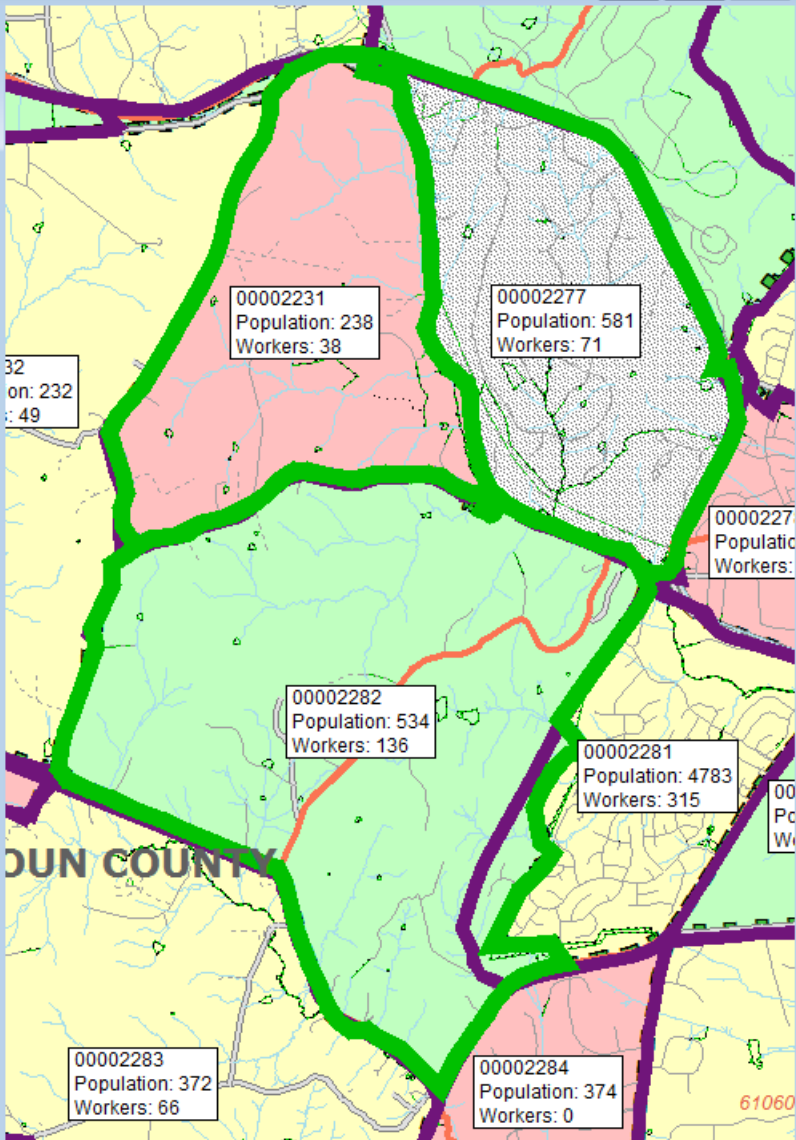
Firstcut3

PopandWork



Merging TAZs

- ▣ Either Population or Workers greater than 1,200
- ▣ Major Transportation Facilities
- ▣ Other Features that are not easily crossed
- ▣ Homogeneous Zones



Next Steps

- ▣ Continue TAZ Aggregation
- ▣ Aggregate TAZs to Transportation Analysis Districts (TADs) > 20,000
- ▣ 90 Days – End of June