



## **COVID-19 Travel Monitoring Snapshot**

### **An Analysis of Monthly Traffic and Enplanement Data, Pre-pandemic – February 2021**

**Published: May 2021**

These charts were developed to illustrate how the COVID-19 pandemic is impacting travel in the Metropolitan Washington Region. The charts were prepared by COG/TPB staff using Continuous Count Station (CCS) data collected by the District of Columbia, Maryland, and Virginia as well as enplanement data provided by the Metropolitan Washington Airports Authority (MWA) and BWI Thurgood Marshall Airport. The intention is to update these charts on a monthly basis as data become available.

The first set of charts display the traffic observed at CCS in the TPB Modeled Region during the COVID-19 outbreak. The analysis is further broken down by the jurisdictional groupings of the Core, Inner, and Outer Rings. A map showing the location of each station is provided for each jurisdictional grouping. The analysis is limited to the CCS that were operating and producing reliable data in both 2020/2021 and 2019.

#### **PRE-PANDEMIC COMPARISON YEAR**

The most recent pre-pandemic equivalent month is used for comparison in the monthly charts. The comparison year runs from March 2019 – February 2020. Traffic data for March – December are compared with March – December 2019 data and the traffic data for January and February are compared with January and February 2020 data.

#### **MONTHLY AVERAGE PERCENT CHANGE**

The bar charts show the average percent change in traffic volumes compared to the equivalent pre-pandemic month beginning in March of 2020. The percent change is calculated for each station and those are averaged for the TPB Region and each of the Core, Inner, and Outer Rings.

#### **MONTHLY AVERAGE DAILY TRAFFIC**

The Monthly Average Daily Traffic charts show average weekday traffic volumes using lines and average daily traffic on weekends using columns. Current traffic is displayed in purple and pre-pandemic traffic for the corresponding months is shown in green. Total daily traffic volumes are calculated for each station and the results are averaged by month for the TPB Region and each of the Core, Inner, and Outer Rings.

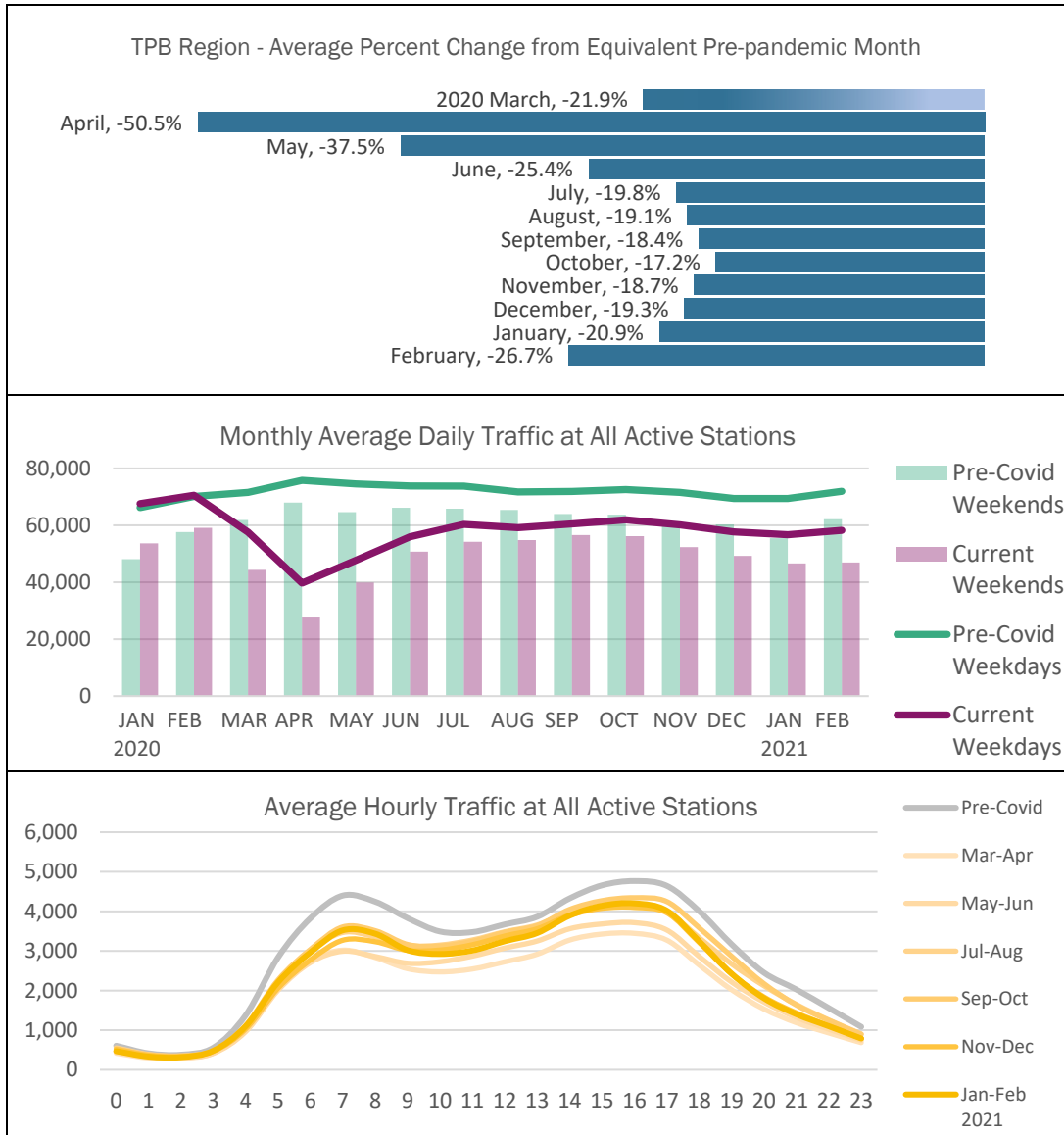
#### **AVERAGE HOURLY TRAFFIC**

The average hourly traffic charts show hourly traffic volume trends for each two-month grouping beginning in January 2020. The pre-pandemic months of January and February are shown in gray and the most recent months are shown in the darkest gradient of gold. The average weekday hourly volume by two-month group is calculated for each station and these are averaged for the TPB Region and each of the Core, Inner, and Outer Rings.

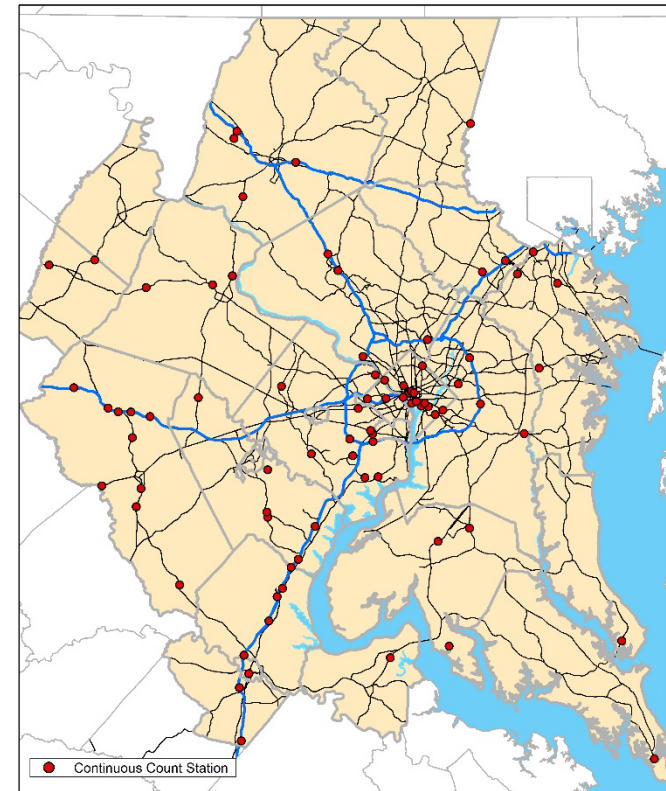
#### **MONTHLY ENPLANEMENT DATA**

The monthly enplanement charts show the total number of enplanements at each of the Washington/Baltimore area major airports including Ronald Reagan Washington National Airport (DCA), Washington Dulles International Airport (IAD), and Baltimore Washington International Thurgood Marshall Airport (BWI). Total monthly enplanements are shown in blue for each month of 2019, in orange for each month of 2020, and in purple for 2021.

## Comparison of Traffic at all Continuous Count Stations in the TPB Modeled Region



2020/21 Active Continuous Count Stations in the TPB Modeled Region

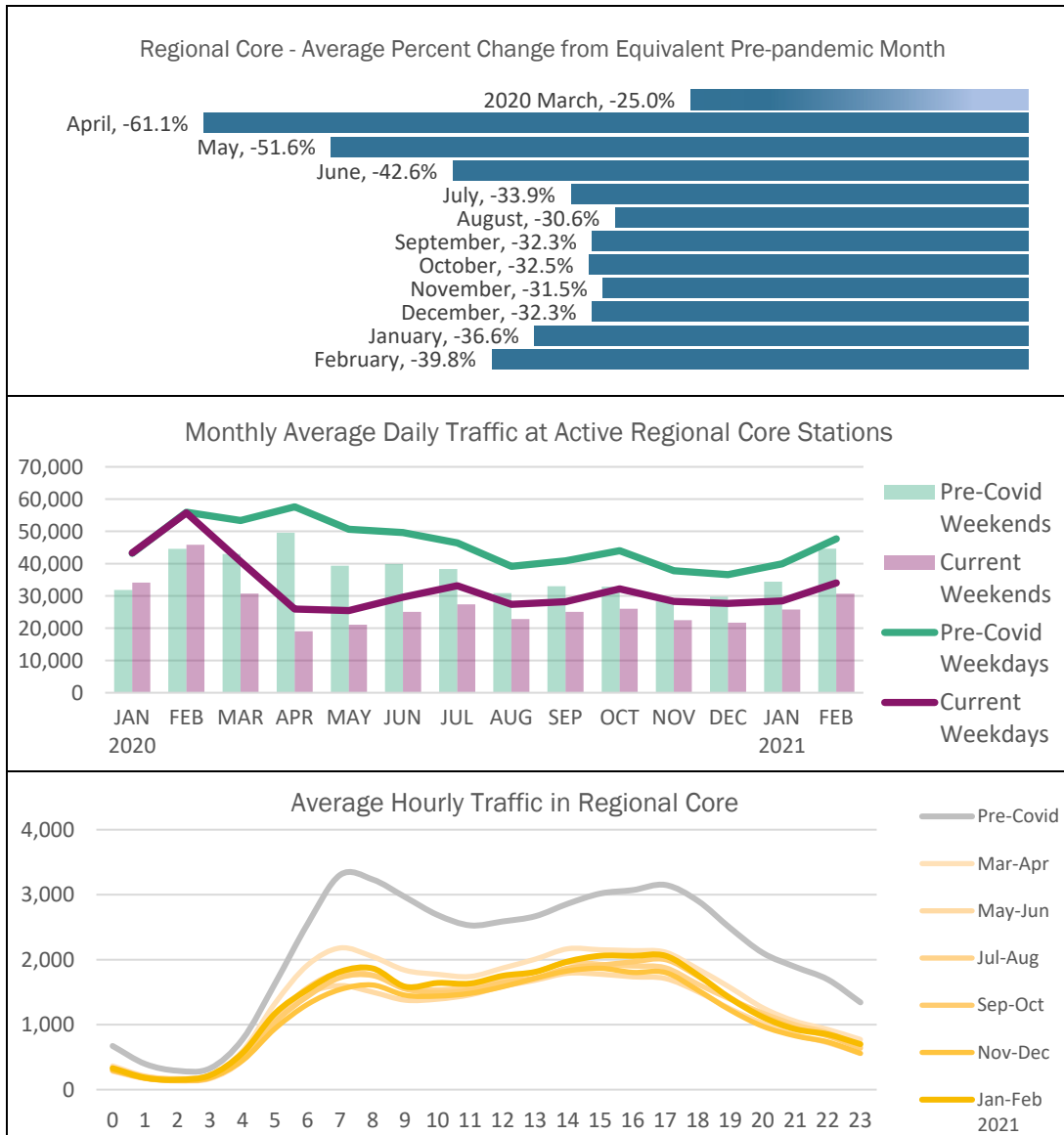


Regional traffic volumes had recovered to over 80 percent of 2019 volumes by July and continued a slow recovery through October. Since November, traffic levels have decreased as compared to their pre-pandemic levels.

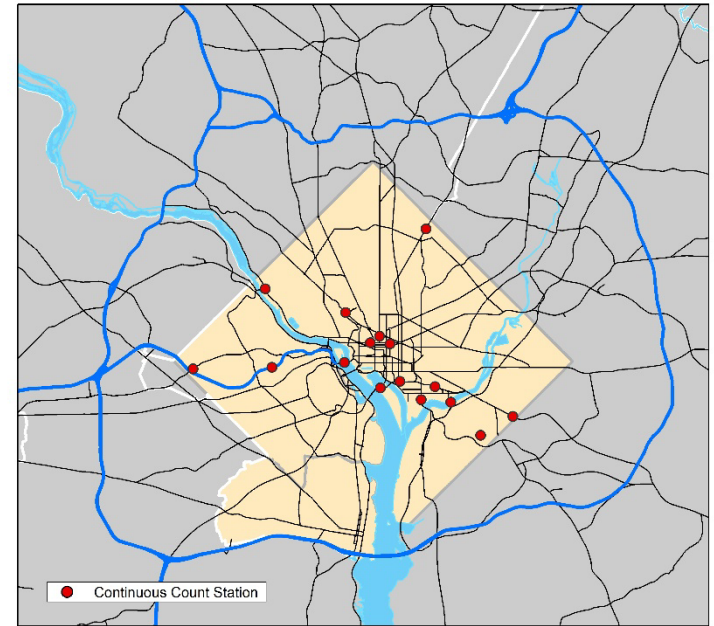
Hourly traffic volumes region-wide are once again beginning to show clear AM and PM peaks, however at lower levels than the pre-pandemic AM and PM peaks.



## Comparison of Monthly Traffic in the Core Jurisdictions of the TPB Modeled Region



2020/21 Active Continuous Count Stations in the Regional Core Jurisdictions of the TPB Modeled Region



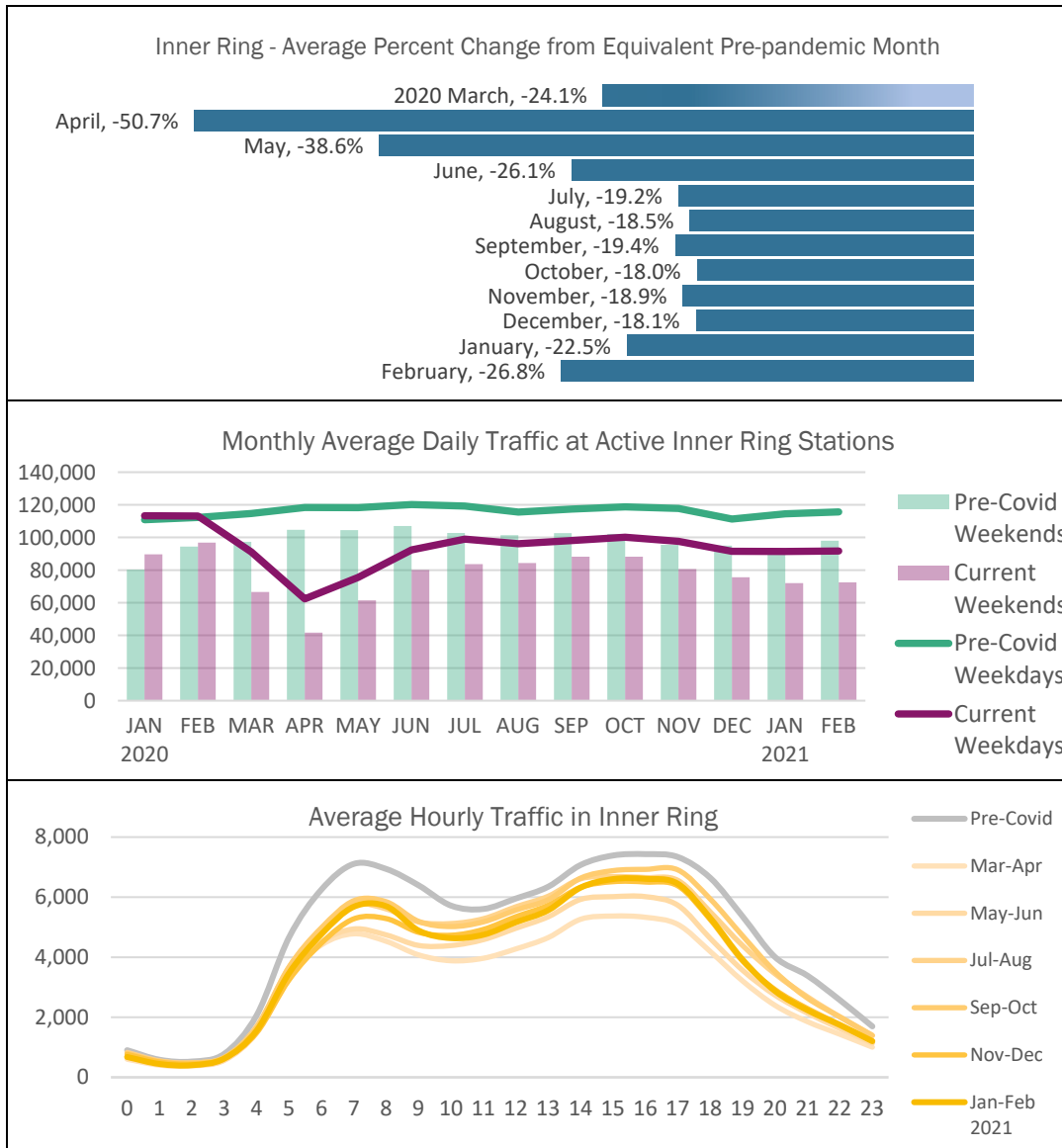
Traffic in the Regional Core decreased more than that of the region as a whole, reaching a low of over 60 percent less than pre-pandemic levels in April 2020. Regional Core traffic continues to experience a slower recovery than the region overall. Traffic levels were back down to almost 40 percent lower than pre-pandemic levels in February.

Weekday hourly traffic in the regional core continues to be fairly flat with no defined AM and PM peaks.

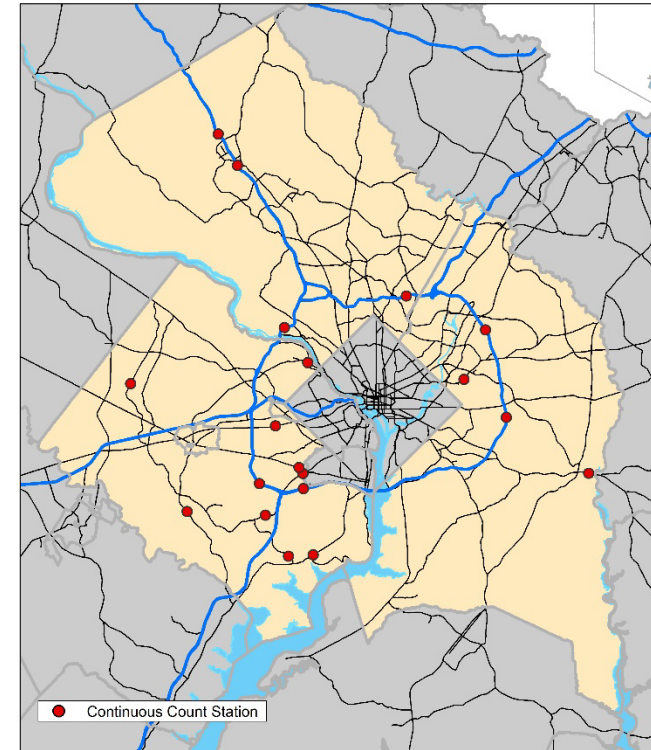
*Please note: Several roads were closed in the District of Columbia between January 15 and January 21, 2021. These dates were removed from the analysis for the District counting stations so as not to skew the results.*



## Comparison of Monthly Traffic in the Inner Jurisdictions of the TPB Modeled Region



2020/21 Active Continuous Count Stations in the Inner Ring Jurisdictions of the TPB Modeled Region

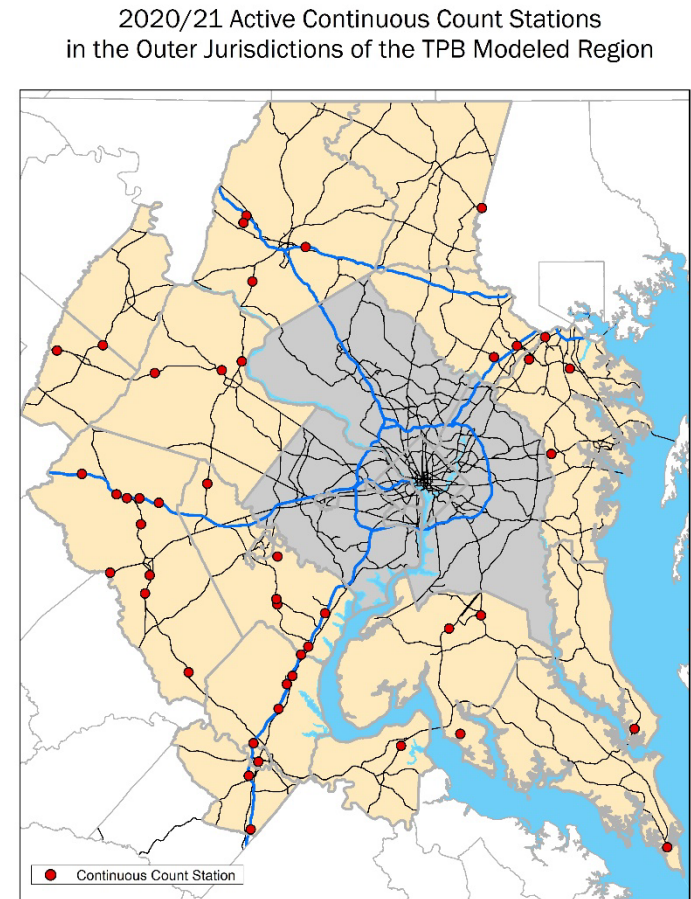
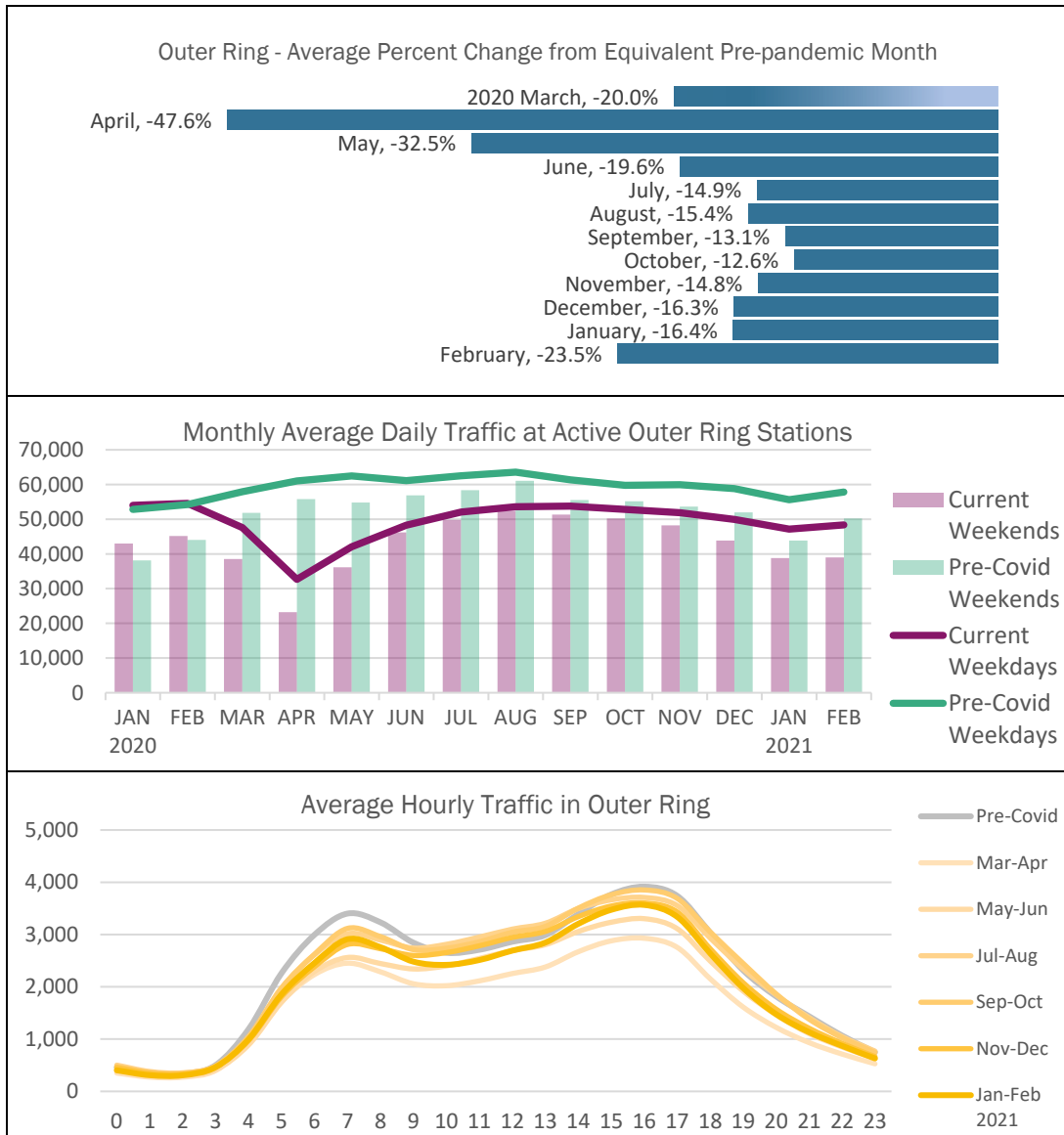


After decreasing by more than 50 percent in April, traffic volumes in the inner suburbs had recovered to over 80 percent of pre-pandemic levels, although fluctuations in recovery are still being observed. Weekend traffic levels have been particularly low as compared with pre-pandemic levels.

Weekday AM and PM peaks are becoming more apparent, although AM peak traffic continues to be much lower than pre-pandemic levels in the inner suburbs.



## Comparison of Monthly Traffic in Outer Jurisdictions of the TPB Modeled Region



In the outer ring within the TPB Modeled Area, traffic volumes have registered notable recovery. By October 2020, volumes in the outer ring were down only 12.5 percent compared to the same time in 2019. Traffic levels have decreased in recent months when compared with pre-pandemic levels. As with the inner jurisdictions, this may be driven by a decrease in weekend traffic.

The weekday hourly traffic in the outer ring is showing a trend towards higher levels of midday traffic.

## Monthly Enplanements at Washington/Baltimore Area Airports

Air travel decreased precipitously at the beginning of the COVID-19 outbreak. Enplanements at Washington/Baltimore area regional airports in April were only four percent of those during April of 2019.

Air travel is continuing a slow recovery. October air travel at the region's three major airports reached its highest level since the beginning of the pandemic with over one million enplanements. Air travel since October has been steady at about 31 percent of pre-pandemic levels.

