

District of Columbia Tree Planting Programs

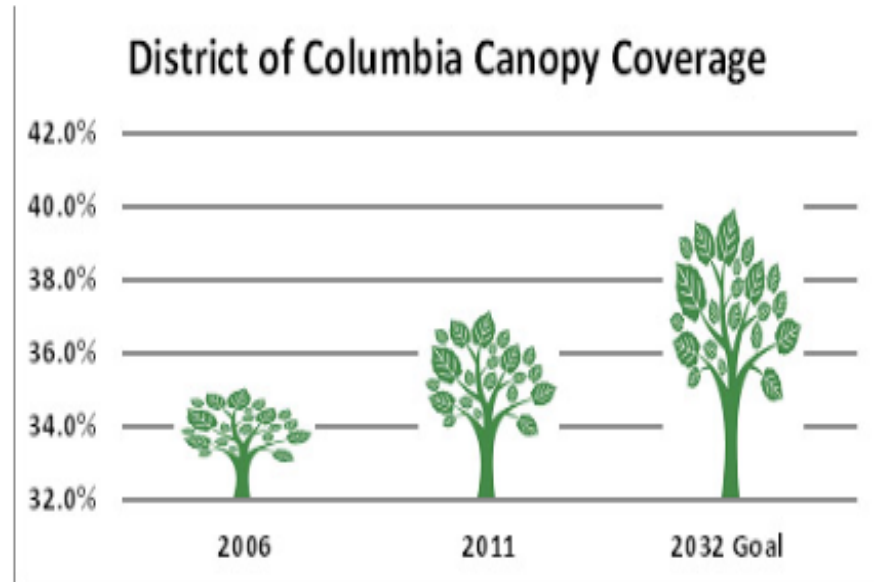
District Tree Planting Programs

- DDOT Urban Forestry Division Street Trees
- DOEE voluntary plantings
 - RiverSmart Homes, Rebates
 - Tree Planting Grants



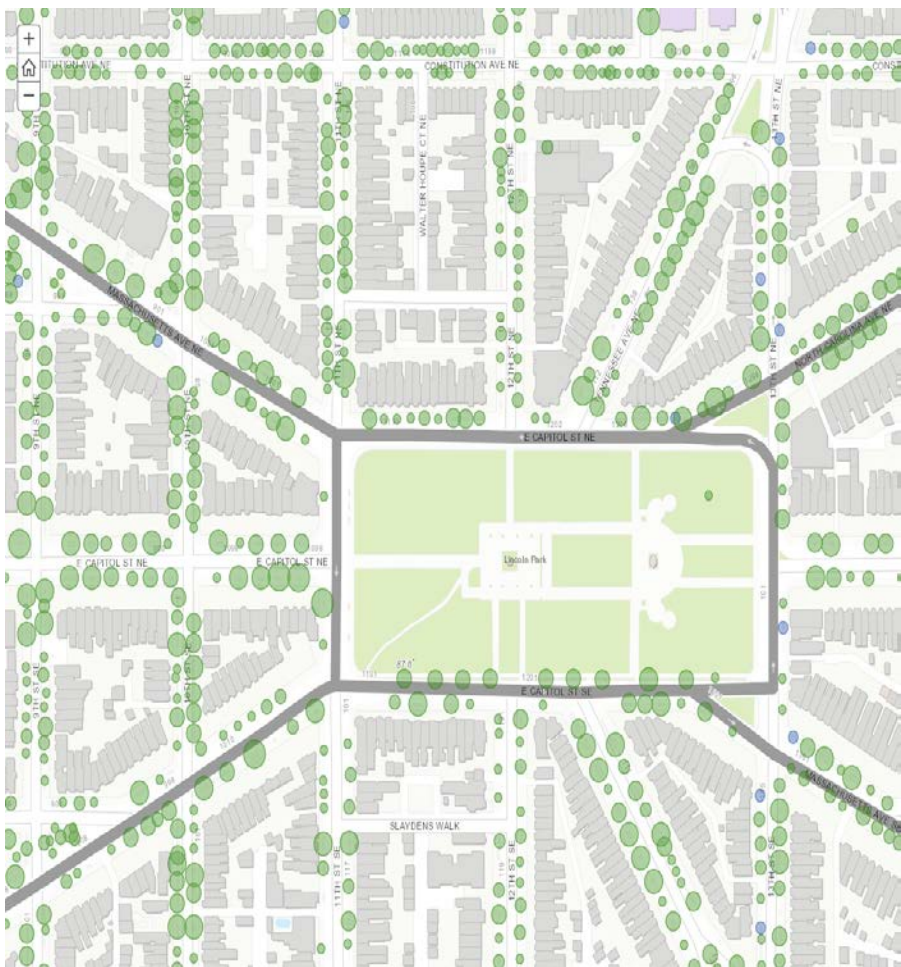
- Casey Trees plantings
- Federal Agencies (NPS, GSA)
- Other nonprofits, utilities, etc

What Drives District Tree Plantings?



- **MS4 Permit Requirements**
 - Net increase of 33,535 trees in MS4 area over life of current permit
- **District Urban Tree Canopy goal**
 - 40% urban tree canopy by 2032
- **Chesapeake Bay load reductions**

Tracking Tree Plantings



Different Tracking Systems for Different Programs:

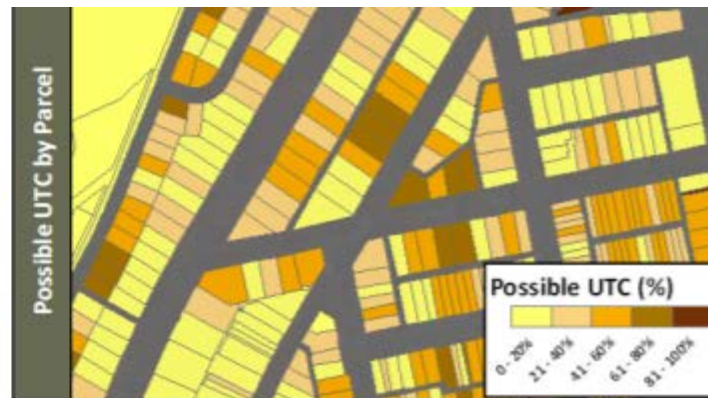
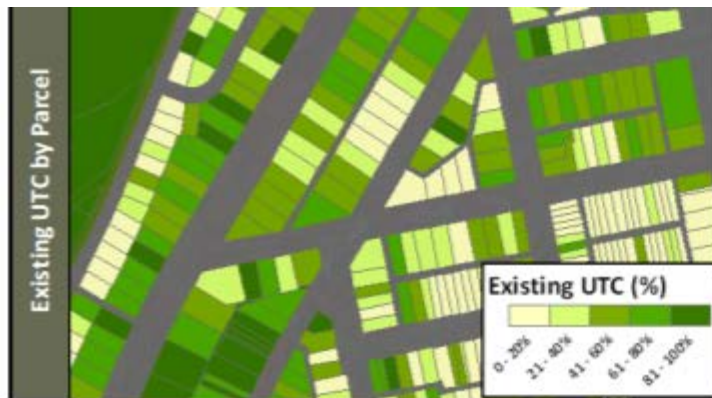
- DDOT UFD, Casey Trees GIS systems
- DOEE Stormwater Database
 - RiverSmart Homes, Rebates
- Other individual or project-specific approaches



Targeting Plantings / Future Potential

“Targeting” depends on the program:

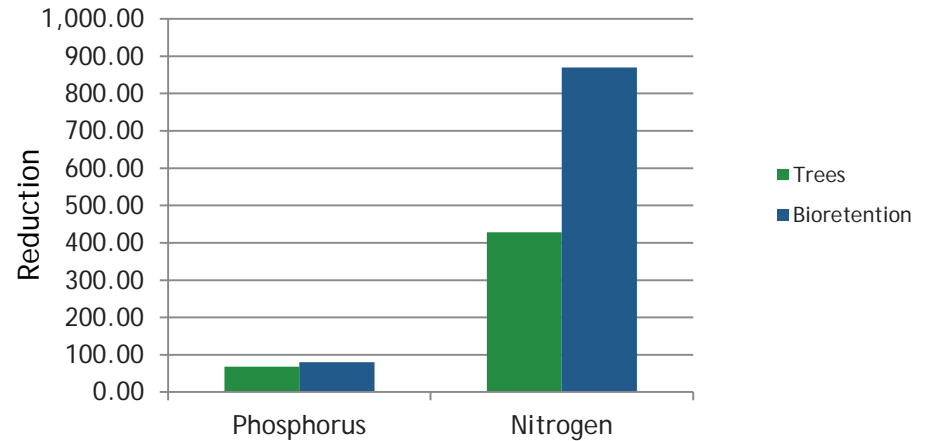
- Street tree plantings not evenly distributed between Wards
- DOEE targeting areas with low rates of participation in RiverSmart Homes
- Prefer plantings in MS4 area of the city



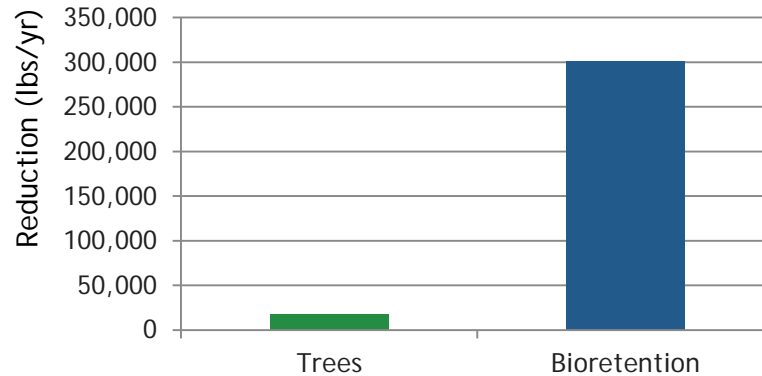
Cost and Performance

- **DOEE grant spending:**
 - **Approx. \$1.2 million to plant 4,900 trees**
 - **Unit cost of \$244/tree**
- **Clean Water SRF projects with similar budgets:**
 - **School / Park LID retrofits**
 - **Green Streets**
 - **IE small number of LID installations**

Nutrient Reductions Returned from CAST Model

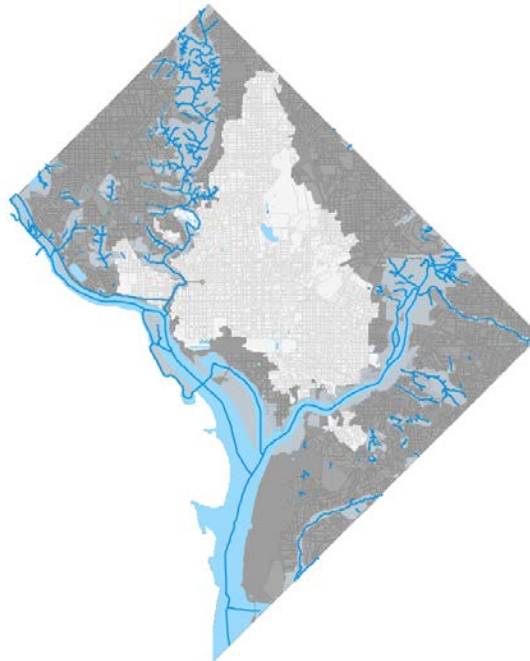
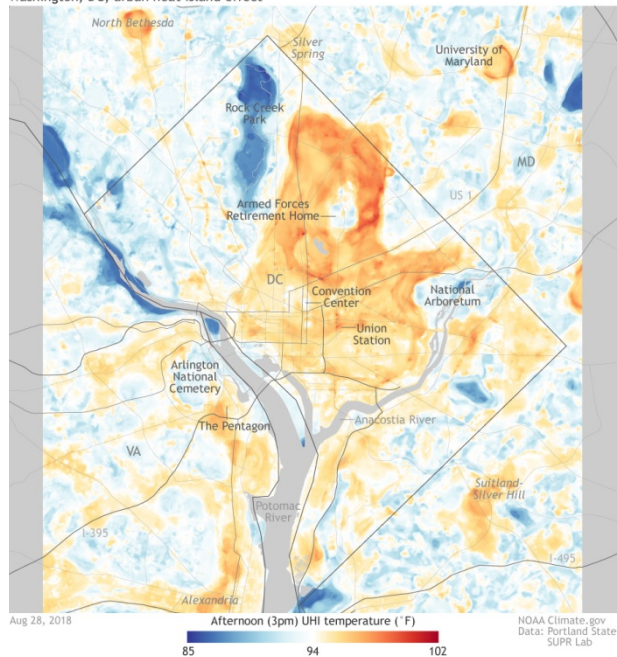


Sediment Reductions Returned from CAST Model



Co-benefit

Washington, DC, urban heat island effect



- Conflict between Urban Heat Island priority areas and MS4 area?
- Air quality?



Questions?

Jonathan Champion

DOEE Water Quality Division

(202) 535-1722

jonathan.champion@dc.gov

