

Virginia Portion of the Draft Regional Freight Network

Please read:

The following pages describe a portion of the draft Regional Freight Network. Immediately following this page there are a series of maps that show the location of the routes comprising the draft Regional Freight Network. A table that provides additional information about each route, including the reasoning behind its inclusion, follows the maps.

Please review and let me know if you think there should be any additions or deletions to the network along with the reasoning behind your inclusions or deletions. I would appreciate responses by Friday, December 12, 2014. Here is my email address:

jschermann@mwkog.org

Please remember that the primary purpose behind the creation of the Regional Freight Network is to allow for the development of freight performance measures and not to identify official “truck routes”, designation of which is in the purview of the State of Maryland, the Commonwealth of Virginia, and the District of Columbia.

To better make sense of the network, the individual routes are organized into the following three categories, or “tiers”.

- Primary Tier: (dark reddish brown on the map)
 - Highest volumes
 - Part of the National Network¹
 - “Through” trucks
 - How trucks typically enter and leave the region
- Secondary Tier: (orange on the map)
 - Allows trucks to permeate the region
 - Provides access to important freight generators and attractors
- Connector: (purple on the map)
 - Last mile connectivity

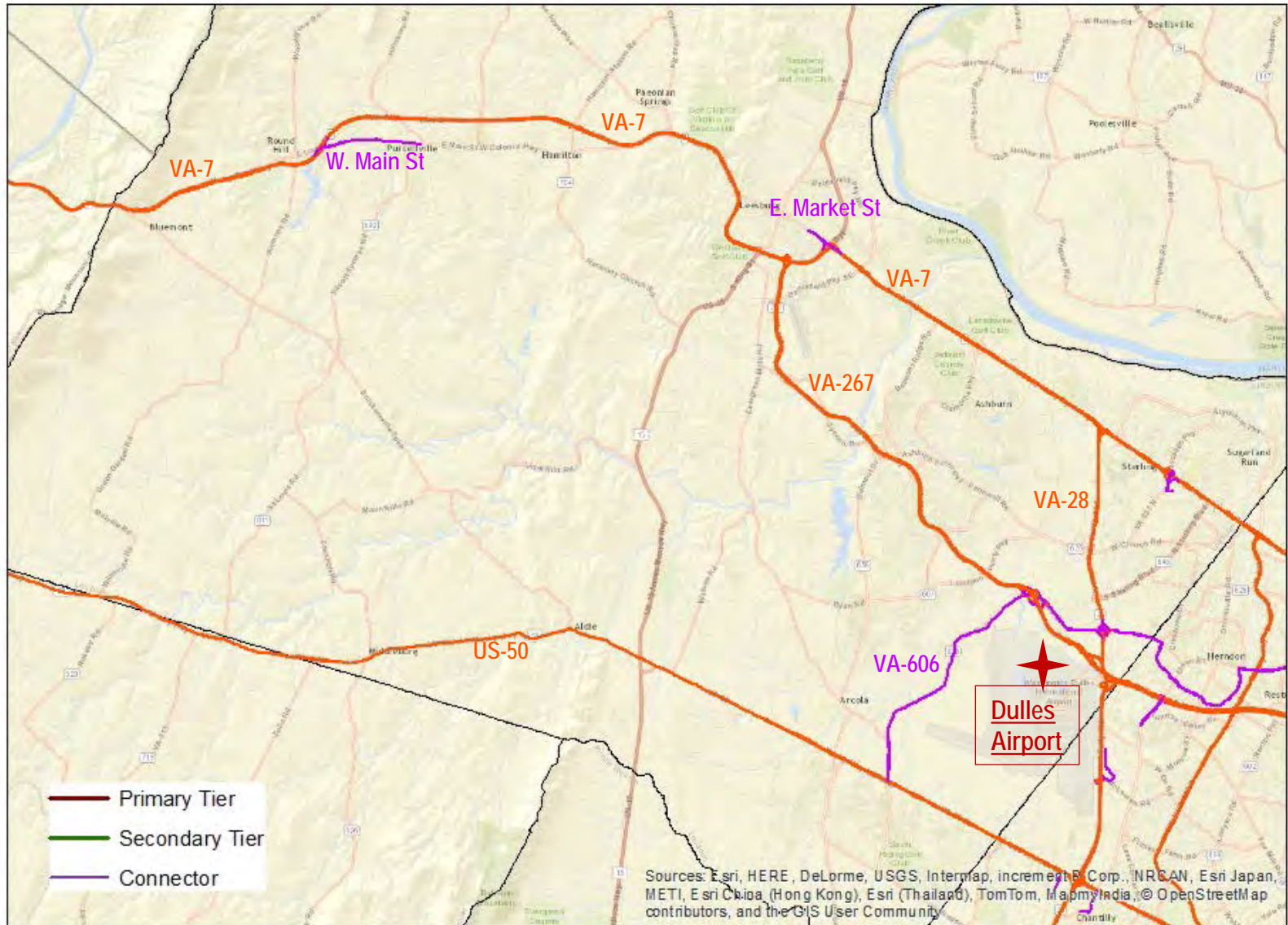
Thanks in advance for your help in finalizing the Regional Freight Network.

Jon Schermann
Metropolitan Washington Council of Governments

¹ Except for MD-200 (Intercounty Connector) which is not yet part of the National Network.

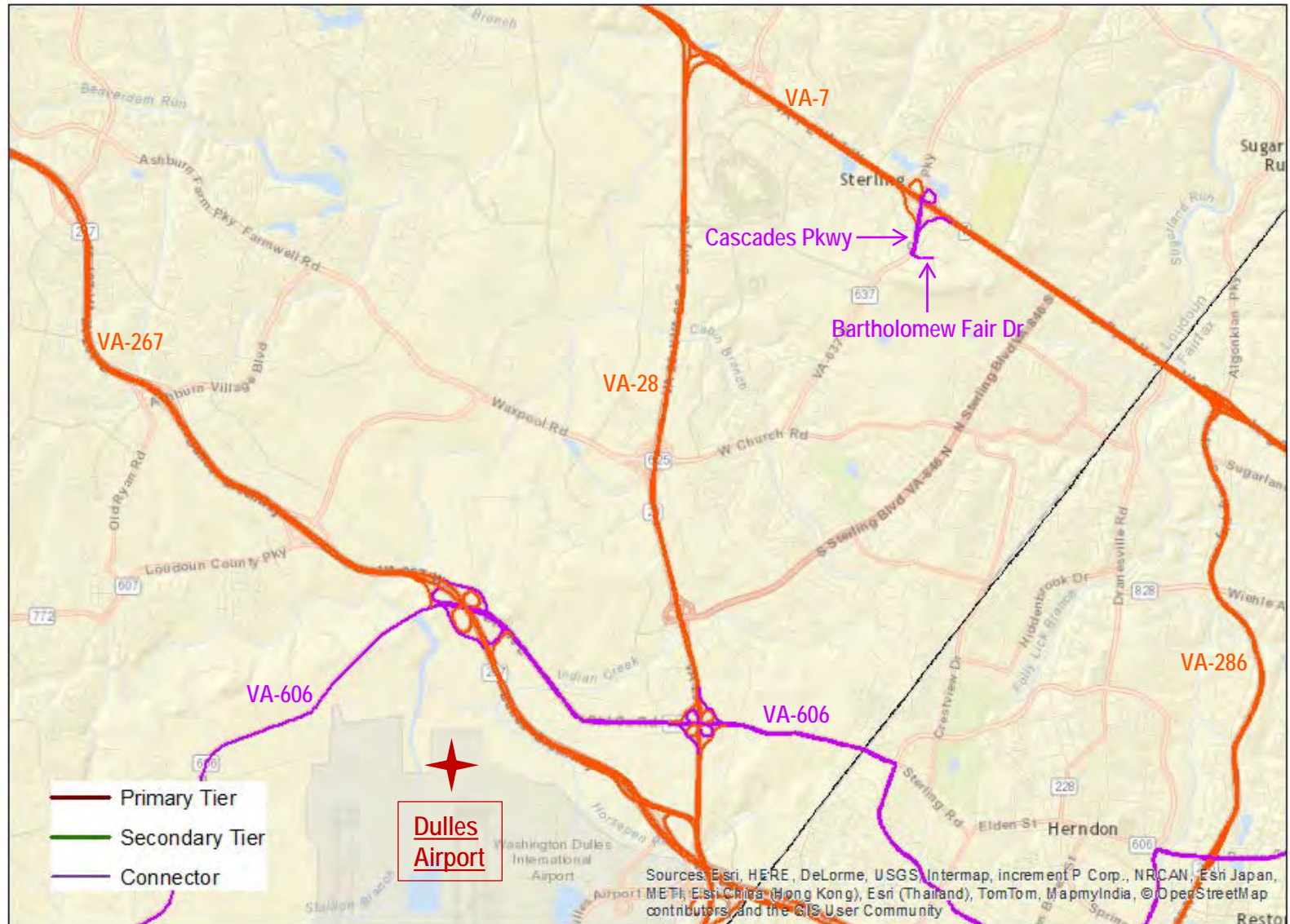
DRAFT Regional Freight Network

Loudoun County Area



DRAFT Regional Freight Network

Loudoun County Area - Detail

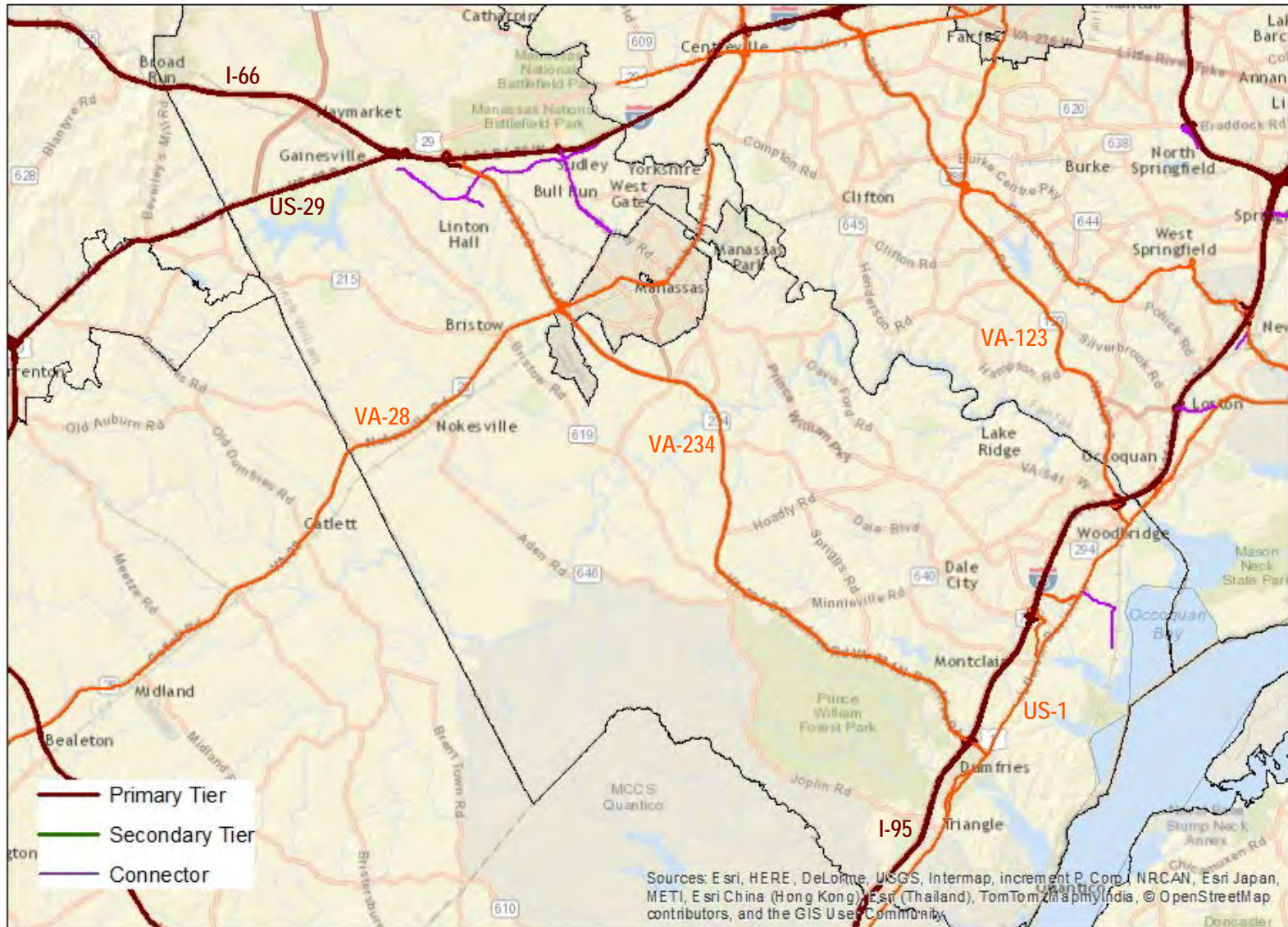


Route Name	From	To	Tier	Reason	Comments
US-50	Loudoun - Fauquier – County Line	US-29 (Fairfax Circle)	Secondary	Provides access to Dulles Airport and to Arcola and Chantilly industrial areas	STAA Virginia Access Route between Lee Rd and I-66.
VA-7	Frederick County, VA – Loudoun County Line	Washington St, Alexandria	Secondary	Provides truck access to Purcellville, Leesburg, and the commercial areas along VA-7 in eastern Loudoun County	STAA National Network (western Loudoun County), STAA Virginia Qualifying Highway (eastern Loudoun County to I-495).
VA-28	VA-7	Prince William – Fauquier County Line	Secondary	Provides truck access to commercial and industrial areas in Loudoun, Fairfax, and Prince William Counties and the Cities of Manassas and Manassas Park.	STAA Virginia Qualifying Highway between VA-7 and I-66 and between VA-234 and US-29
VA-267	VA-7	I-495	Secondary	Provides truck connections to Leesburg, Dulles Airport, Reston/Herndon, and I-495.	STAA Virginia Access Route between VA-28 and I-495.

Route Name	From	To	Tier	Reason	Comments
VA-606	US-50	VA-7	Connector	Links warehouse area north of Dulles Airport to VA-28, VA-267, and US-50.	
Cascades Pkwy – Bartholomew Fair Dr	VA-7	Price Cascades Plaza	Connector	Provides truck access to Costco and Potomac Run Plaza retail areas	STAA Virginia access route
E. Market St	VA-7	Catoctin Circle	Connector	Provides truck access to commercial areas of Leesburg	STAA Virginia access route
W. Main St	VA-7	N. 23 rd St	Connector	Provides truck access to downtown Purcellville	STAA Virginia access route

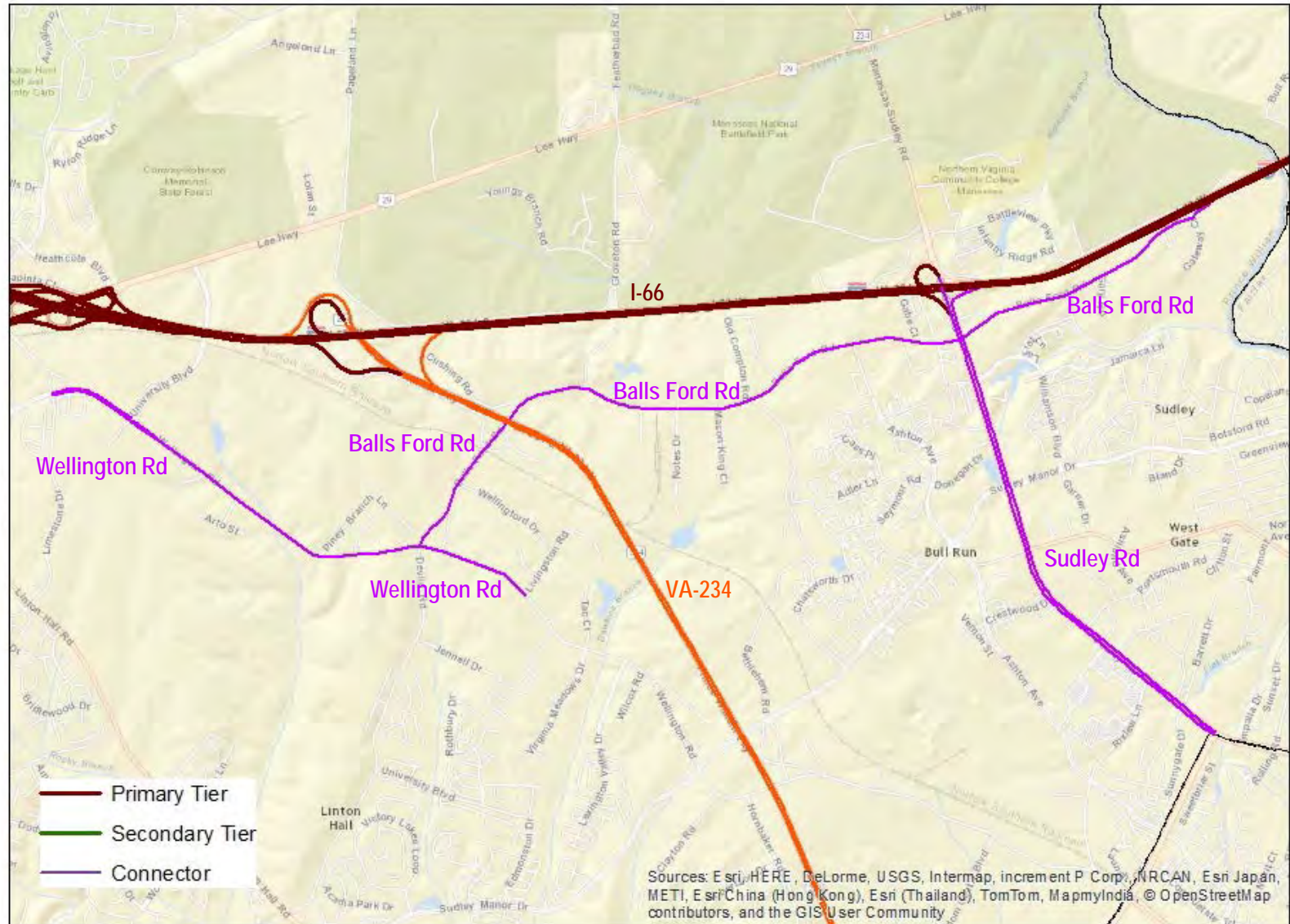
DRAFT Regional Freight Network

Prince William County Area



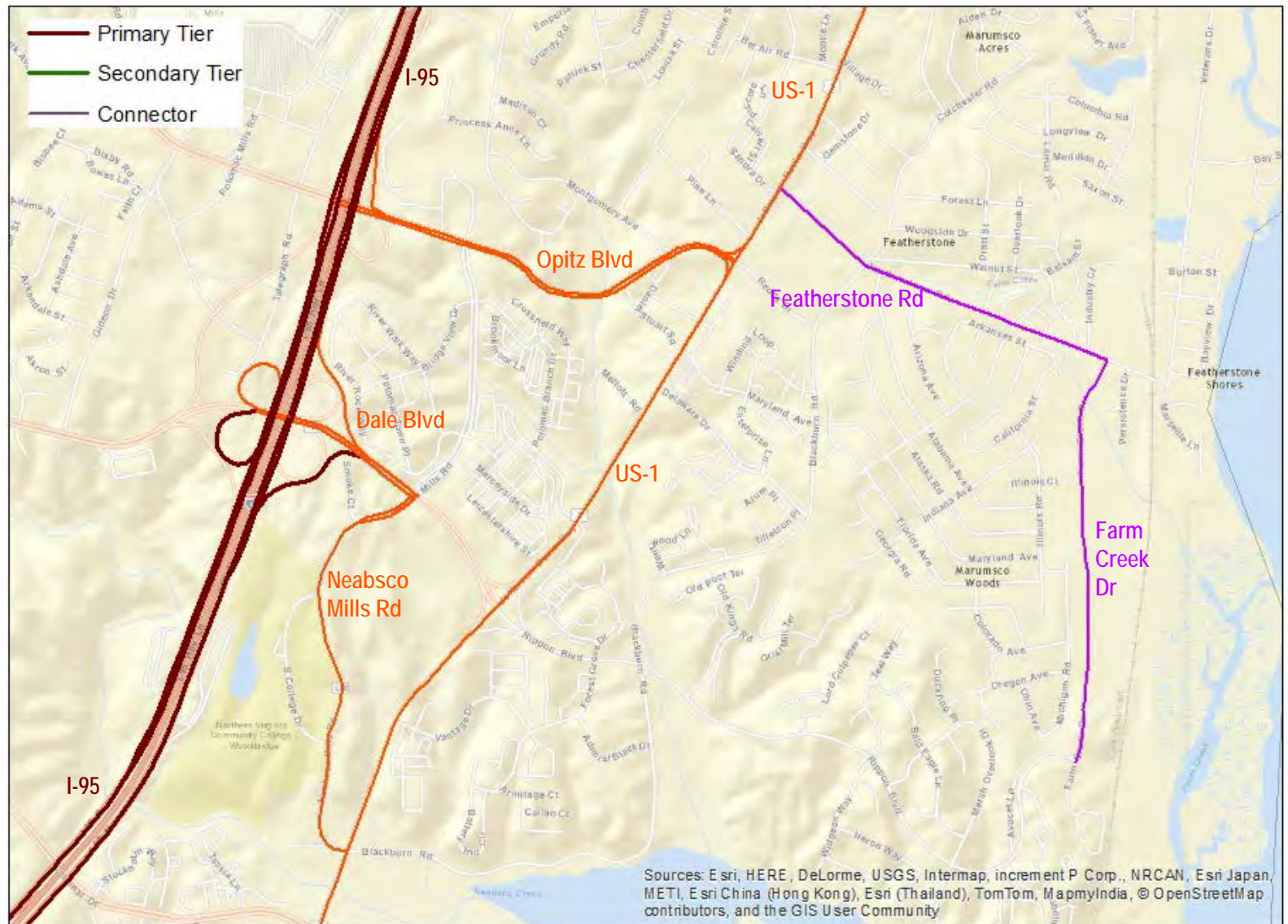
DRAFT Regional Freight Network

Prince William County Area – Detail A



DRAFT Regional Freight Network

Prince William County Area – Detail B



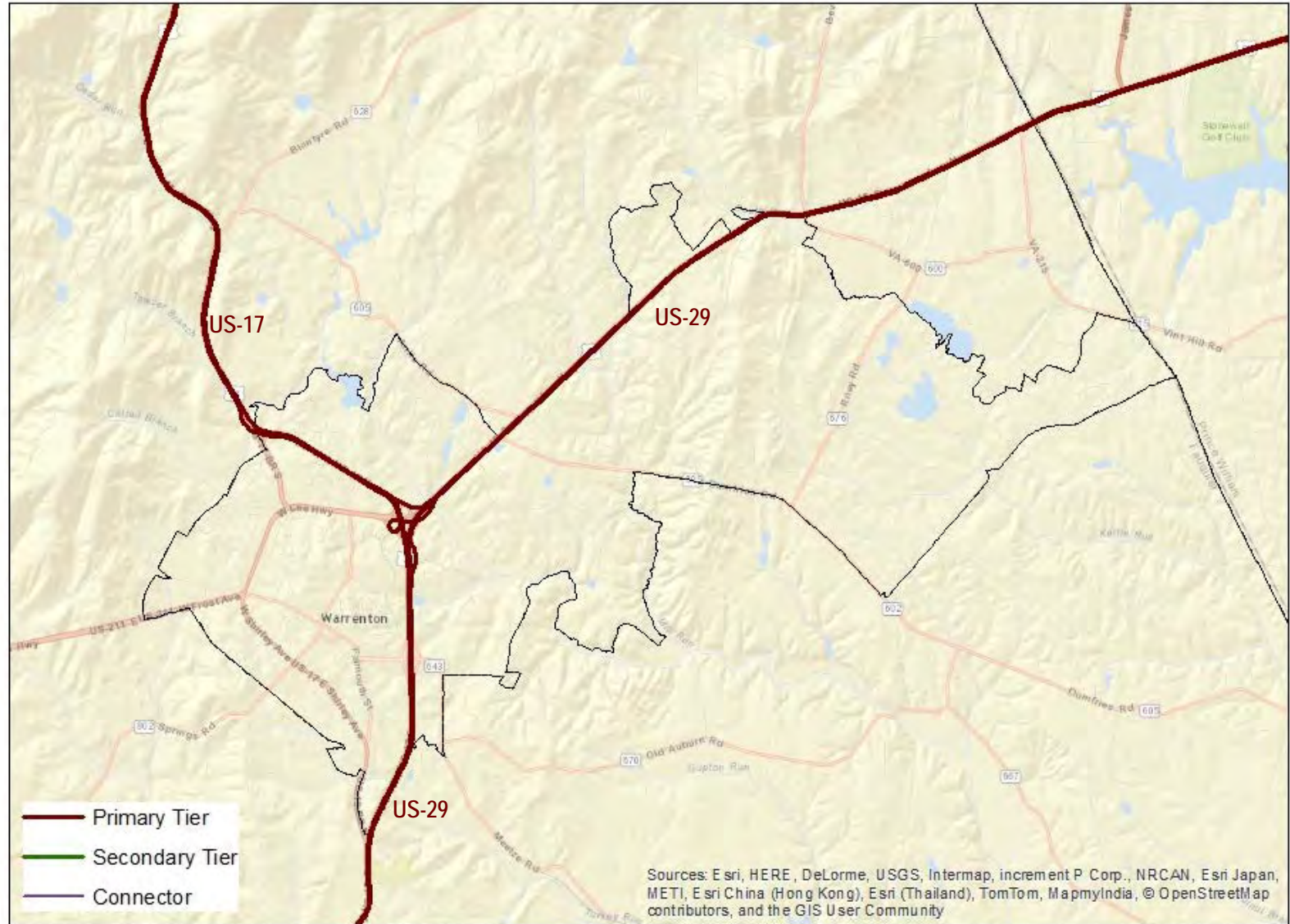
Route Name	From	To	Tier	Reason	Comments
I-66	I-81	I-495	Primary	Interstate	
I-95	Prince William – Stafford County Line	Virginia - DC Line	Primary	Interstate	
US-1	Prince William – Stafford County Line	Virginia - DC Line	Secondary	Provides truck access to Fort Belvoir, Quantico, and an assortment of businesses in Stafford, Prince William, and Fairfax Counties as well as the City of Alexandria	
US-29	Culpepper and points south	I-66	Primary	Major north-south truck route in Virginia between the I-95 and I-81 corridors.	STAA National Network between I-66 and North Carolina
VA-28	VA-7	Prince William – Fauquier County Line	Secondary	Provides truck access to commercial and industrial areas in Loudoun, Fairfax, and Prince William Counties and the Cities of Manassas and Manassas Park.	STAA Virginia Qualifying Highway between VA-7 and I-66 and between VA-234 and US-29

Route Name	From	To	Tier	Reason	Comments
VA-123	I-495	US-1	Secondary	Provides truck connections between I-95 in eastern Prince William County, City of Fairfax, I-66, and Tysons Corner.	
VA-234	I-66	US-1	Secondary	Provides truck connection through Prince William County between US-1, I-95, City of Manassas, I-66, and the Balls Ford Road industrial area	
Balls Ford Road	Wellington Rd	terminus of Balls Ford Rd	Connector	Provides truck access to industrial areas along the length of Balls Ford Rd – provides truck connection to Wellington Rd industrial and commercial areas	STAA Virginia Access Route
Dale Blvd – Neabsco Mills Rd	I-95	US-1	Secondary	Provides truck connection between I-95 and US-1.	STAA Virginia Access Route
Featherstone Rd – Farm Creek Dr	US-1	terminus of Farm Creek Dr	Connector	Provides truck access to industrial areas along Farm Creek Dr	STAA Virginia Access Route

Route Name	From	To	Tier	Reason	Comments
Opitz Blvd	I-95	US-1	Secondary	Provides truck connection between I-95 and US-1.	STAA Virginia Access Route
Sudley Rd	I-66	Godwin Dr	Connector	Provides truck access to industrial and commercial areas, including Costco, Westgate Plaza Shopping Center, and Manassas Mall.	STAA Virginia Access Route
Wellington Rd	Limestone Dr	Livingston Rd	Connector	Provides truck access to industrial areas.	STAA Virginia Access Route

DRAFT Regional Freight Network

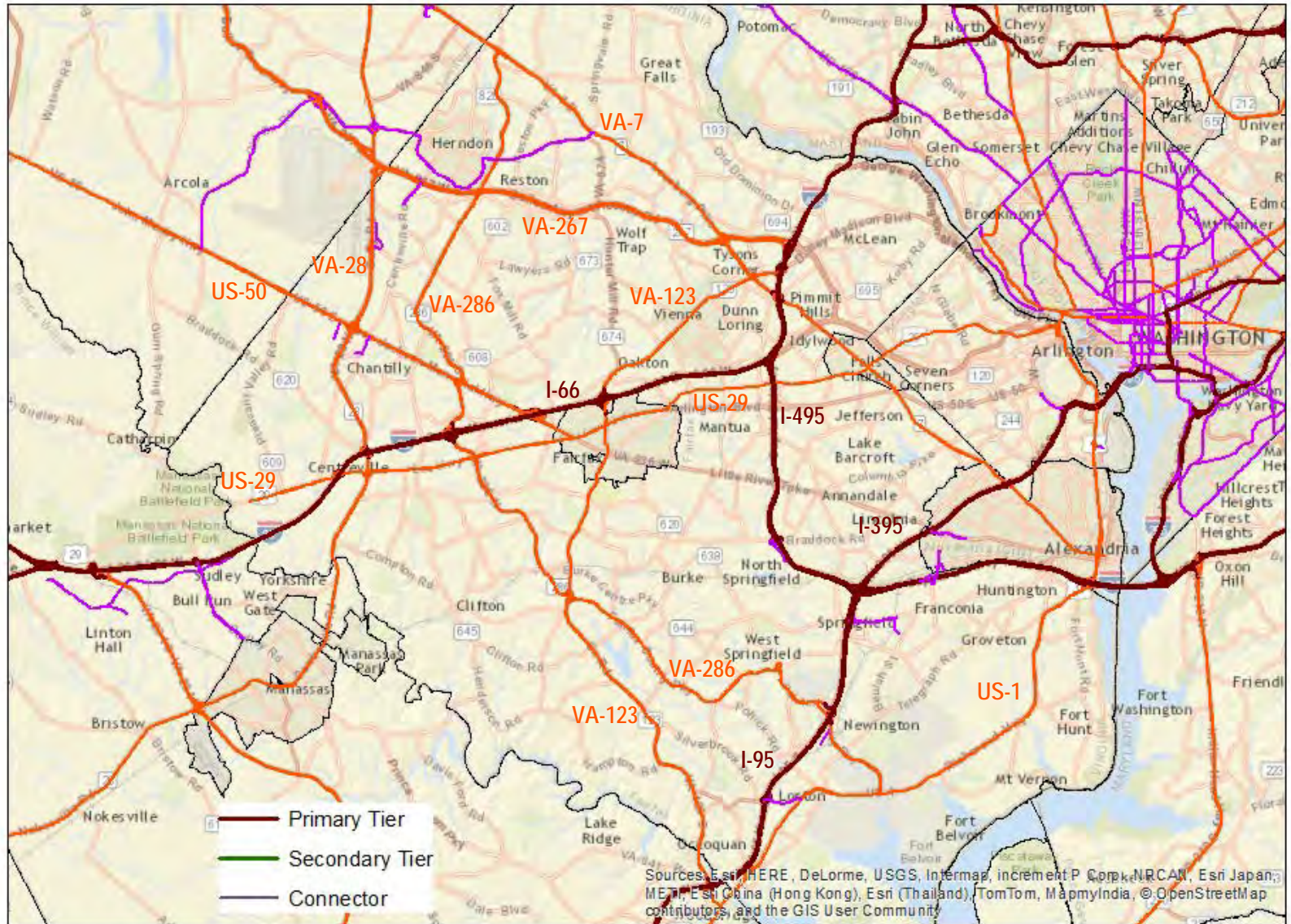
Fauquier County Area – MWCOG Planning Area



Route Name	From	To	Tier	Reason	Comments
US-17	I-66	I-95	Primary	Major freight corridor between Fredericksburg and I-66.	STAA National Network Note: Trucks prohibited on US-17 between I-66 and US-50.
US-29	Culpepper and points south	I-66	Primary	Major north-south freight route in Virginia between the I-95 and I-81 corridors.	STAA National Network

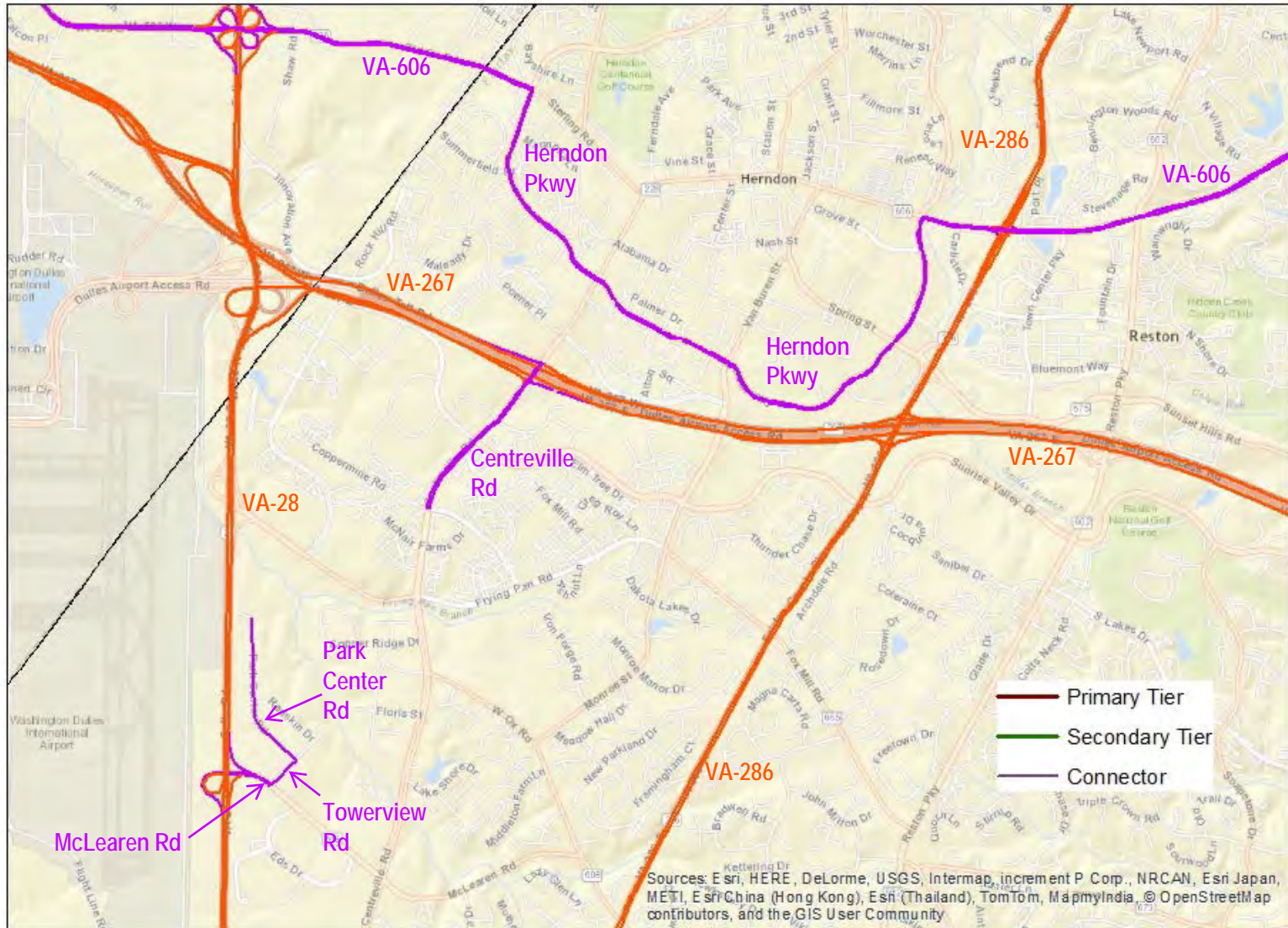
DRAFT Regional Freight Network

Fairfax County Area



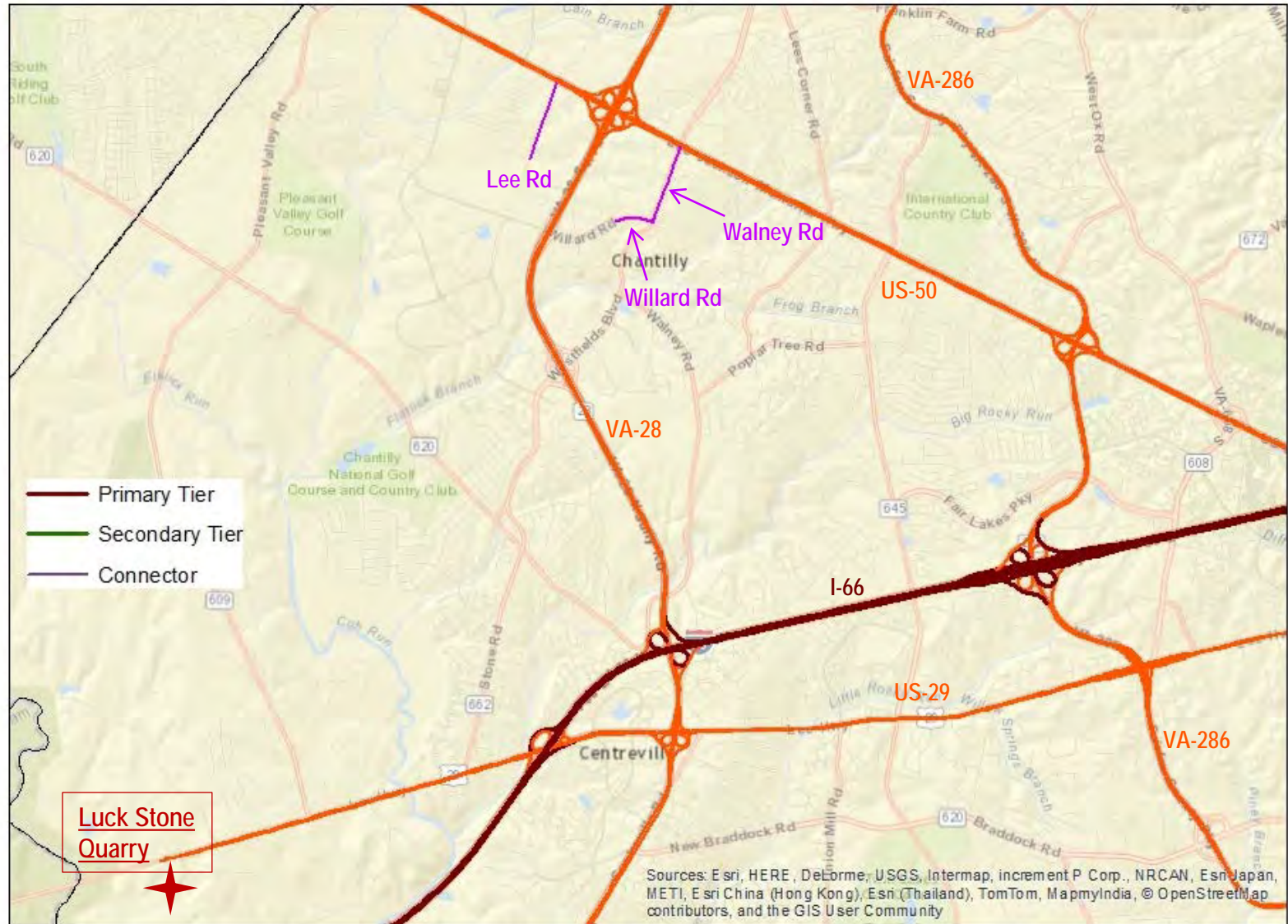
DRAFT Regional Freight Network

Fairfax County Area – Detail A



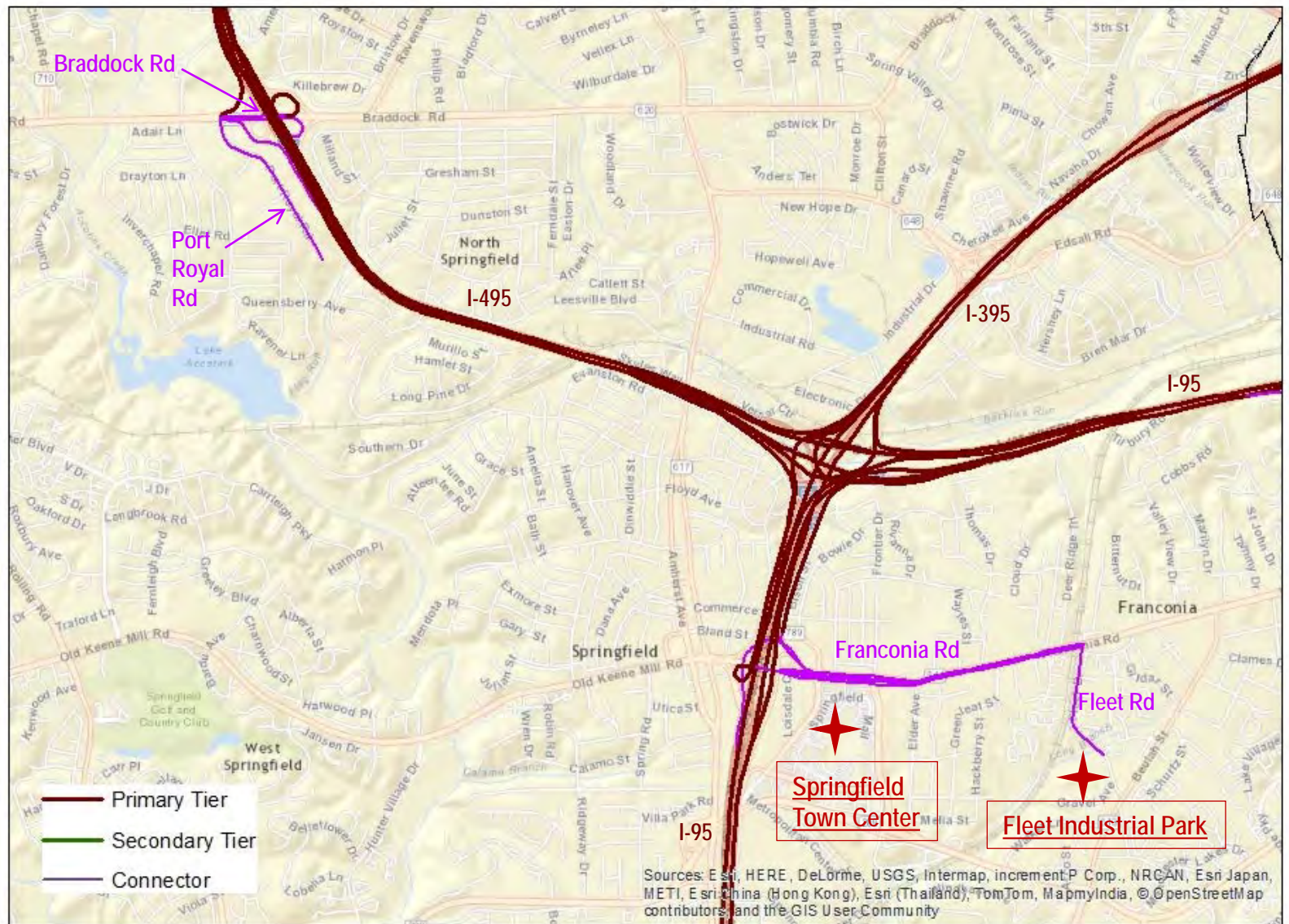
DRAFT Regional Freight Network

Fairfax County Area – Detail B



DRAFT Regional Freight Network

Fairfax County Area – Detail C



DRAFT Regional Freight Network**Fairfax County Area**

Route Name	From	To	Tier	Reason	Comments
I-66	I-81	I-495	Primary	Interstate	
I-95	Prince William – Stafford County Line	Virginia - DC Line	Primary	Interstate	
I-395	I-95 / I-495	Virginia - DC Line	Primary	Interstate	
I-495	Capital Beltway	Capital Beltway	Primary	Interstate	
US-1	Prince William – Stafford County Line	Virginia - DC Line	Secondary	Provides truck access to Fort Belvoir, Quantico, and an assortment of businesses in Stafford, Prince William, and Fairfax Counties as well as the City of Alexandria	
US-29 (south of I-66)	Culpepper and points south	I-66	Primary	Major north-south truck route in Virginia between the I-95 and I-81 corridors.	STAA National Network between I-66 and North Carolina

Route Name	From	To	Tier	Reason	Comments
US-29 (east of Manassas National Battlefield Park)	Luck Stone quarry just east of the Manassas National Battlefield Park	Virginia – DC Line	Secondary	Provides truck access to commercial and industrial areas parallel to I-66, including the Luck Stone quarry near the Manassas National Battlefield Park. East of Fairfax, US-29 is the only truck legal route between the City of Fairfax and the Key Bridge	
US-50	Loudoun - Fauquier – County Line	US-29 (Fairfax Circle)	Secondary	Provides access to Dulles Airport and to Arcola and Chantilly industrial areas	STAA Virginia Access Route between Lee Rd and I-66.
VA-7	Frederick County, VA – Loudoun County Line	Washington St., Alexandria	Secondary	Provides truck access to Purcellville, Leesburg, and the commercial areas along VA-7 in Fairfax County	STAA National Network (western Loudoun County), STAA Virginia Qualifying Highway (eastern Loudoun County to I-495).

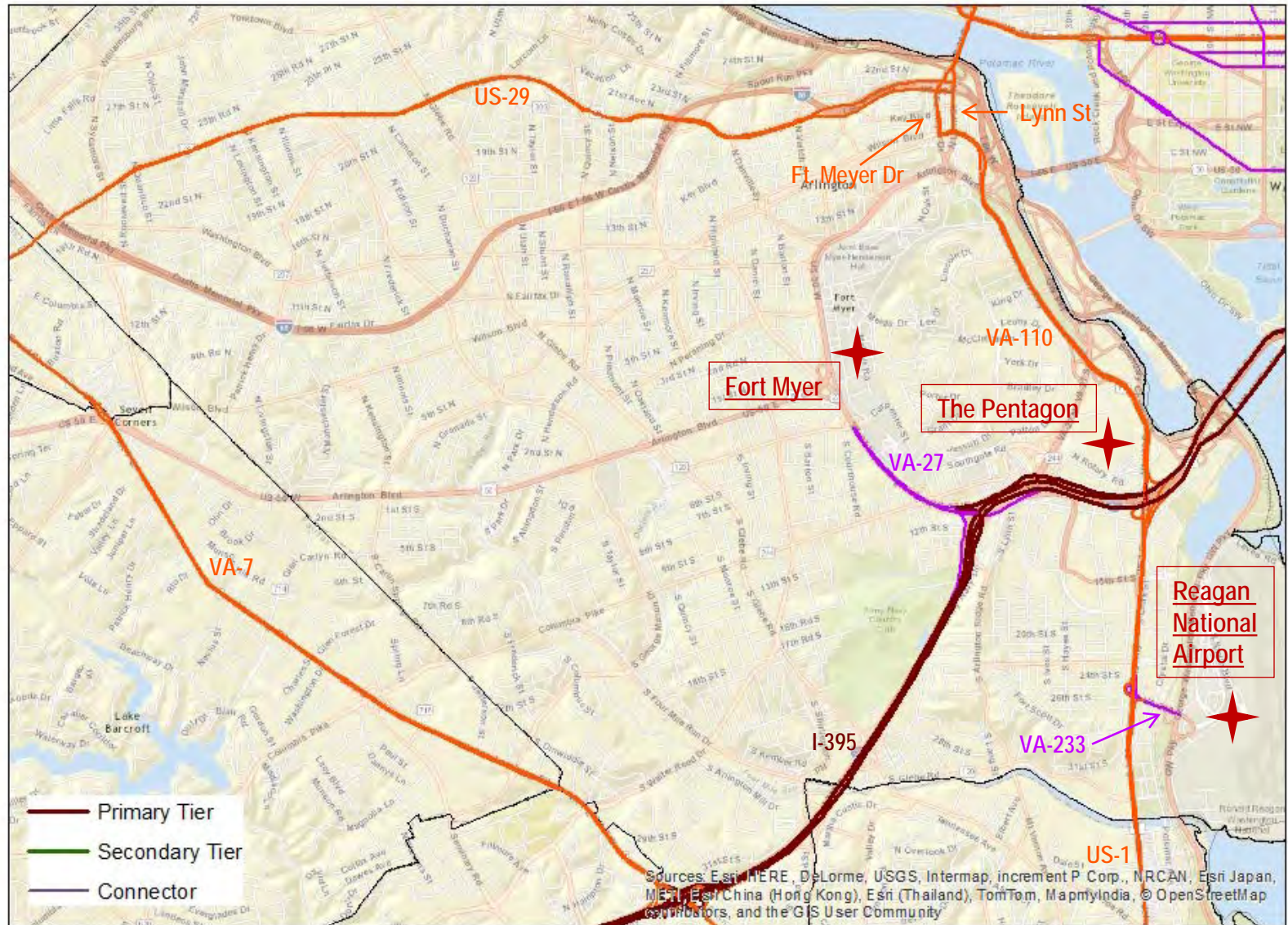
Route Name	From	To	Tier	Reason	Comments
VA-28	VA-7	Prince William – Fauquier County Line	Secondary	Provides truck access to commercial and industrial areas in Loudoun, Fairfax, and Prince William Counties and the Cities of Manassas and Manassas Park.	STAA Virginia Qualifying Highway between VA-7 and I-66 and between VA-234 and US-29
VA-123	I-495	US-1	Secondary	Provides truck connections between I-95 in eastern Prince William County, City of Fairfax, I-66, and Tysons Corner.	
VA-267	VA-7	I-495	Secondary	Provides truck connections to Leesburg, Dulles Airport, Reston/Herndon, and I-495.	STAA Virginia Access Route between VA-28 and I-495.
VA-286	VA-7	US-1	Secondary	Provides truck connections between VA-7, I-66, and I-95 and access to Fort Belvoir.	
VA-606	US-50	VA-7	Connector	Links warehouse area north of Dulles Airport to VA-28, VA-267, and US-50.	

Route Name	From	To	Tier	Reason	Comments
Braddock Rd – Port Royal Rd	I-495	Terminus of Port Royal Rd	Connector	Provides truck access to industrial areas along Port Royal Rd	STAA Virginia Access Route
Centreville Rd	VA-267	Coppermine Rd	Connector	Provides truck access to commercial areas along Centreville Rd	STAA Virginia Access Route
Franconia Rd – Fleet Rd	I-95	Fleet Industrial Park	Connector	Provides truck access to commercial and industrial areas including Springfield Town Center and Fleet Industrial Park	STAA Virginia Access Route
Herndon PkwY	VA-606	VA-606	Connector	Provides truck access to commercial and industrial areas in Herndon and connects two sections of VA-606	
Lee Rd	US-50	Flint Lee Rd	Connector	Provides truck access to industrial areas along Lee Rd and to the Chantilly Crossing Shopping Center (Costco)	STAA Virginia Access Route

Route Name	From	To	Tier	Reason	Comments
Lorton Rd	I-95	US-1	Connector	Provides a truck connection between I-95 and US-1 in Lorton.	STAA Virginia Access Route
McLearen Rd – Towerview Rd – Park Center Rd	VA-28	Terminus of Park Center Rd	Connector	Provides truck access to industrial areas along Park Center and Towerview Roads.	STAA Virginia Access Route
Terminal Rd	VA-286	Terminus	Connector	Provides truck access to Plantation Pipeline Terminal facilities and other industrial areas.	STAA Virginia Access Route
Walney Rd – Willard Rd	US-50	Brookfield Corporate Drive	Connector	Provides truck access to the Dulles Expo Center and other commercial areas.	STAA Virginia Access Route

DRAFT Regional Freight Network

Arlington County Area

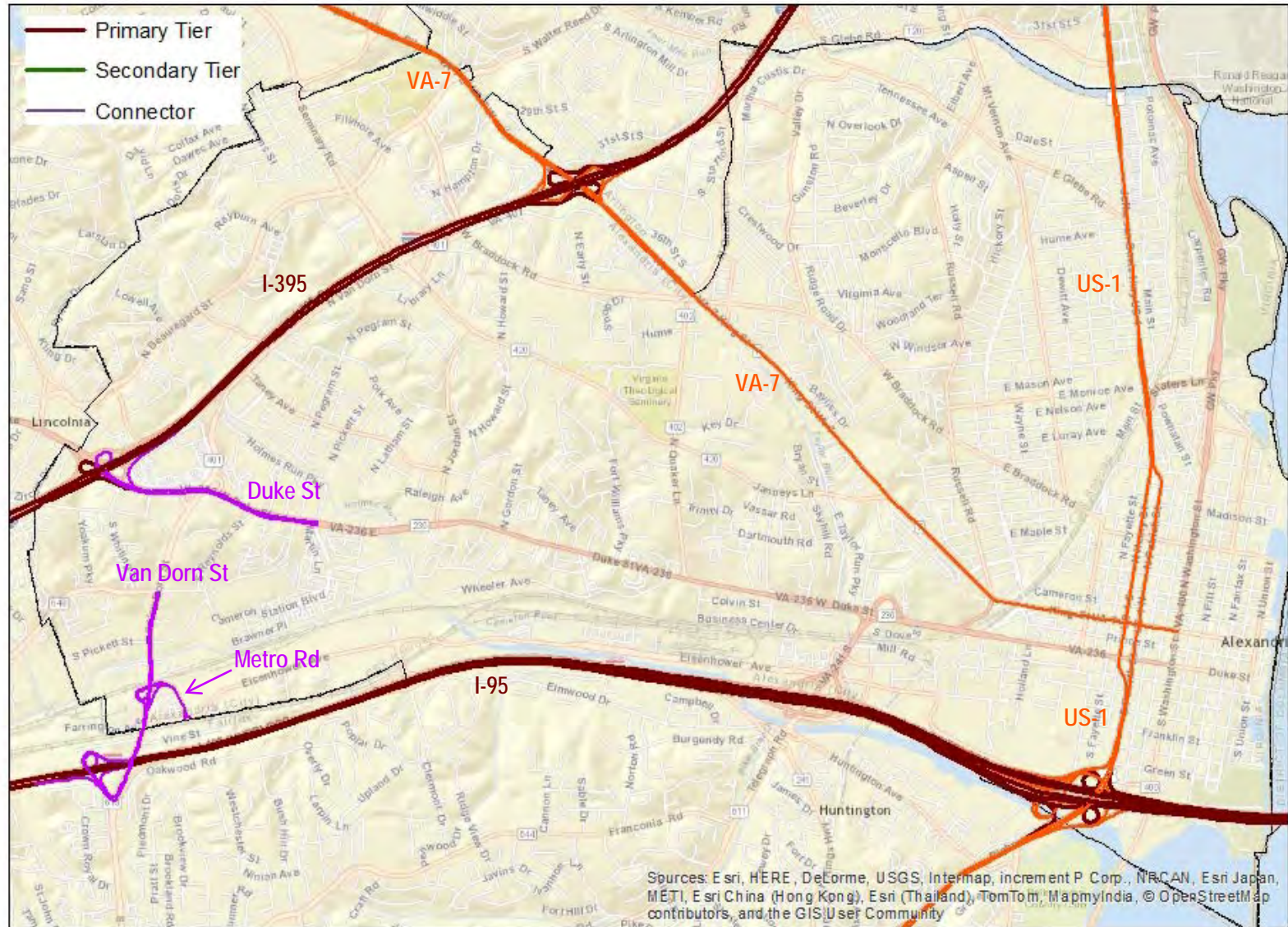


Route Name	From	To	Tier	Reason	Comments
I-395	I-95 / I-495	Virginia - DC Line	Primary	Interstate	
US-1	Prince William – Stafford County Line	Virginia - DC Line	Secondary	Provides truck access to Fort Belvoir, Quantico, and an assortment of businesses in Stafford, Prince William, Fairfax, and Arlington Counties as well as the City of Alexandria.	
US-29	Luck Stone quarry just east of the Manassas National Battlefield Park	Virginia – DC Line	Secondary	Provides truck access to commercial and industrial areas parallel to I-66, including the Luck Stone quarry near the Manassas National Battlefield Park. East of Fairfax, US-29 is the only truck legal route between the City of Fairfax and the Key Bridge. Connects with DC Truck Route System at Key Bridge.	
VA-27	I-395	2 nd St. S	Connector	Provides truck access Fort Myer.	STAA Virginia Access Route

Route Name	From	To	Tier	Reason	Comments
VA-110	I-395	Rosslyn	Secondary	Provides a truck connection between I-395 and US-29 / Key Bridge.	
VA-233	US-1	Washington Reagan National Airport	Connector	Provides truck access to Washington Reagan National Airport.	
Lynn St – Fort Meyer Dr	VA-110	US-29	Secondary	Provides truck connection between US-29 and VA-110.	

DRAFT Regional Freight Network

City of Alexandria Area



Route Name	From	To	Tier	Reason	Comments
I-95	Prince William – Stafford County Line	Virginia - DC Line	Primary	Interstate	
I-395	I-95 / I-495	Virginia - DC Line	Primary	Interstate	
US-1	Prince William – Stafford County Line	Virginia - DC Line	Secondary	Provides truck access to Fort Belvoir, Quantico, and an assortment of businesses in Stafford, Prince William, and Fairfax Counties as well as the City of Alexandria	
VA-7	Frederick County, VA – Loudoun County Line	Washington St., Alexandria	Secondary	Provides truck access to the commercial areas along VA-7 in Fairfax County and Alexandria	
Duke St	I-395	S. Pickett St	Connector	Provides truck access to the Landmark Mall and other commercial areas.	STAA Virginia Access Route
Van Dorn St – Metro Rd	I-95 / I-495	Edsall Rd	Connector	Provides truck access to industrial areas and CSX intermodal facility.	STAA Virginia Access Route and FHWA Intermodal Connector