

**DC COG Recycling Committee  
Construction & Demolition Debris  
Facility Certification  
July 18, 2013**

Stephen M Bantillo  
Executive Director  
Recycling Certification Institute

## Overview of CORR

- 3<sup>rd</sup>-party C&D facility certifications
- Protocols developed with much input from the industry
- RCI protocols, procedures, and methodologies

## Why CORR Is Important

- “Truth in advertising”
- Level playing field
- Points under USGBC LEED
- Local Govt – ordinance variations

## How Does CORR Work?

- RCI contracts with independent, third-party firms
- Trained to become Evaluators
- Evaluators, using RCI Protocols evaluate the records and reports of the facility.

## How Does CORR Work?

- Evaluators prepare an Evaluation Report outlining their activities and findings
- Sent to RCI for review and determination
- If the report and background information are consistent, RCI Certifies the Facility's recycling statistics as real, accurate, verifiable, reproducible and enforceable.

## Where Does The Information Go?

- Green Halo is the interface (secure)
- Operators can apply to be certified or simply registered
- Once an account has been established, the operator uploads information to maintain certified status

# RECYCLING CERTIFICATION INSTITUTE



RECYCLING  
CERTIFICATION  
INSTITUTE



Questions? Live Chat!  
**ONLINE! >>**

For Friendly, Expert advice call  
**1-888-525-1301**

HOME

ABOUT THE INSTITUTE

CERTIFIED FACILITIES

EVALUATION BODIES

RESOURCES

LATEST NEWS

CONTACT US



**Audited. Validated. Certified.**



Certification Process



Requirements



Get Started

## Welcome to RCI

The re-use of Construction and Demolition (C&D) waste materials reserves more raw materials for the use of future generations. The recycling of C&D waste is a

### Latest News

**Preckwinkle announces online software 'Green Halo' simplifies construction projects**

# RECYCLING CERTIFICATION INSTITUTE



RECYCLING  
CERTIFICATION  
INSTITUTE



Questions? Live Chat!  
**ONLINE! >>**

For Friendly, Expert advice call  
**1-888-525-1301**

HOME

ABOUT THE INSTITUTE

CERTIFIED FACILITIES

EVALUATION BODIES

RESOURCES

LATEST NEWS

CONTACT US

## Registration Application

Your Registration Application will be reviewed by our staff for approval and, once approved, you will receive an email confirming your registration with a link to complete the facility registration process.

### Facility Name & Location

Facility Name \*

Operation/Line Name \*

Address \*

City \*

State \* AL

Zip \*

### Contact Information

Contact Person \*

Position \*

Email \*



# RECYCLING CERTIFICATION INSTITUTE

## Facility Registration

< PREVIOUS NEXT >



West Coast Recycling - C&D Sort Line 3

Inbound Materials Streams

Save Report

**Inbound Material List** - On this page you will identify all Inbound Items your facility accepts from customers. Click the check box next to the materials your facility accepts, then enter the Scale House Code you use to identify that material and the weight of that material your facility accepted in the month. **The Data entered here is only for your last business month. Older data can be entered once approved.**

Materials List	Enter Data for the Month of: <b>JUNE</b>		
Materials	Accepted	Scale House Code	Inbound Weight (tons)
<b>Appliances &amp; Equipment</b> <small>(All non-functional appliances, HVAC units, air handlers and restaurant equipment *freon must be evacuated*)</small>	<input checked="" type="checkbox"/>	APPL	1,000,000
<b>Asphalt</b> <small>(Pavement and asphalt grindings *does not include roofing materials*)</small>	<input type="checkbox"/>		
<b>Bottles &amp; Cans</b> <small>(Plastic/glass drinking bottles and aluminum cans.)</small>	<input type="checkbox"/>		
<b>Bricks, Masonry &amp; Stone Products</b> <small>(Bricks, masonry &amp; stone products including tile *does not include ceramics*)</small>	<input type="checkbox"/>		
<b>Cardboard and Paper</b> <small>(Corrugated Cardboard, fiberboard and paper materials.)</small>	<input type="checkbox"/>		
<b>Carpet Padding/Foam</b> <small>(All carpet except from suspended materials)</small>	<input type="checkbox"/>		

# RECYCLING CERTIFICATION INSTITUTE

[HOME](#)[ABOUT THE INSTITUTE](#)[CERTIFIED FACILITIES](#)[EVALUATION BODIES](#)[RESOURCES](#)[LATEST NEWS](#)

## Facility Registration

[< PREVIOUS](#)[NEXT >](#)

West Coast Recycling - C&D Sort Line 3

Outbound Materials Streams

[Save Report](#)

Outbound Material Streams - On this page you will identify all of your Outbound Material Streams and their Dispositions (what you do with these materials). You will be asked to enter Disposition Tonnage and break downs of each process. All totals must equal 100% of the total tonnage entered for each material. **Example: 1000 tons of Cardboard Paper, 860 Tons Baled, 140 Tons Transferred = 100%**

Materials List

Enter Data for the Month of: **JUNE**

- Cardboard & Paper
- Carpet Padding & Foam
- Ceiling Tiles
- Concrete, Asphalt, Stone, Brick, Porcelain

100% Accounted For



Total Outbound Tonnage for this Material  (tons)

Disposition Method	Tonnage Processed	% of Total Processed
Recycled	<input type="text" value="1,000,000"/>	<input type="text" value="100"/>
> Base Rock	<input type="text"/>	<input type="text" value="0"/>
> Drain Rock/Sand	<input type="text"/>	<input type="text" value="0"/>

# RECYCLING CERTIFICATION INSTITUTE

HOME ABOUT THE INSTITUTE CERTIFIED FACILITIES EVALUATION BODIES RESOURCES LATEST NEWS CONTACT US

## Facility Registration

< PREVIOUS

SUBMIT FOR REVIEW >

1

Facility Information

2

Inbound Materials

3

Outbound Materials

4

Review & Submit

West Coast Recycling - C&D Sort Line 3

### Facility Profile & Report

Facility:

Map:

Company Logo:

#### West Coast Recycling

3251 Glendora Dr  
San Jose, CA 95131  
Main: 6507037041  
Web: www.greenhalosystems.com  
Contact: Chris Pankaew  
Email: chris@greenhalosystems.com



Logo Not Available

**Facility Type:** C&D Recycling Facility

**Scales:** Certified, 7

**Other Services:** Material Sales, Storage, Fencing

**Permits:** San Francisco Business License

**Associations:** USGBC

**Hours:**

Monday - 1:00 am to 1:00 pm

Tuesday - 1:00 am to 1:00 pm

Wednesday - 1:00 am to 1:00 pm

Thursday - 1:00 am to 1:00 pm

Friday - 1:00 am to 1:00 pm

Facility Gallery Not Available

Facility Recycling Rate Information:

Recycling Rate with ADC

**54.55%**

Recycling Rate without ADC

**45.45%**

## Green Halo RFID Certification

- Inexpensive testing method
- Completely customizable
- Fast and unobtrusive
- Quick set up, with no down time
- Same for all facilities
- Accurate reporting
- Tracks to secondary markets
- Cloud-based anywhere, anytime access

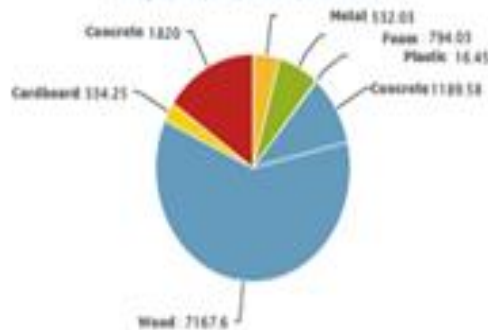
# RECYCLING CERTIFICATION INSTITUTE

## Green Halo's Patented RFID Facility Diversion Rating System

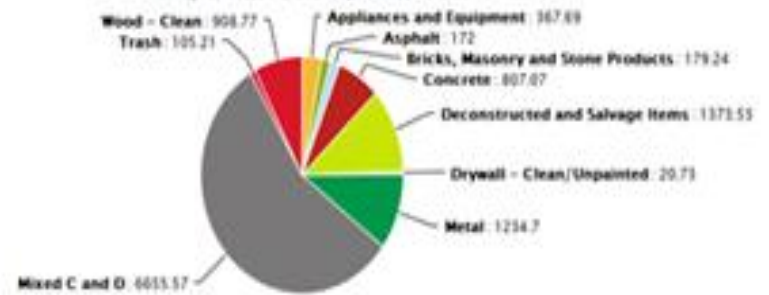
Diversion Report for Davis Street Transfer Station - GH234-463-5678

Report Data 6-12-10, 3:15 PM TO 6-12-10 4:30 PM

Materials Injected Into System (in tons)  
Salvaged, Recycled, and Disposed by Tons



Material Recycling Totals (in tons)  
Salvaged, Recycled, and Disposed by Tons



Diversion Rate Total:

**78%**

Material Types Injected:	7 - 100%
Total Materials Detected:	7 - 100%
Total Material Units:	2480 - 100%
Total Units Detected:	2138 - 87.9%
Total Units Recycled:	1884 - 78%
Total Units Disposed:	254 - 22%
Time Measured:	1 Hour 15 Min

Diversion Rate Total:

**1,238**  
(in tons)

Mixed C&D:	238 Tons - 22%
Wood:	8 Tons - 6%
Metal:	14.3 Tons - 14%
Drywall:	7.8 Tons - 6.73%
Bricks:	1.8 Tons - 2.2%
Asphalt:	16 Tons - 14.8%
Concrete:	230 Tons - 22%
Greenwaste:	8 Tons - 6%

*Generates comprehensive diversion reports in real time.  
Complete material recovery analysis.  
Anywhere, anytime access.*



# Timeframe

- Contracting Evaluators
- Start in Northern California
- July 2013

## Information

- [stephen.bantillo@gmail.com](mailto:stephen.bantillo@gmail.com)
- <http://www.recyclingcertification.org/>
- <https://greenhalosystems.com/>