



RiverSmart Homes Program

Steve Saari

District Department of the
Environment,
Watershed Protection Division

Steve.saari@dc.gov

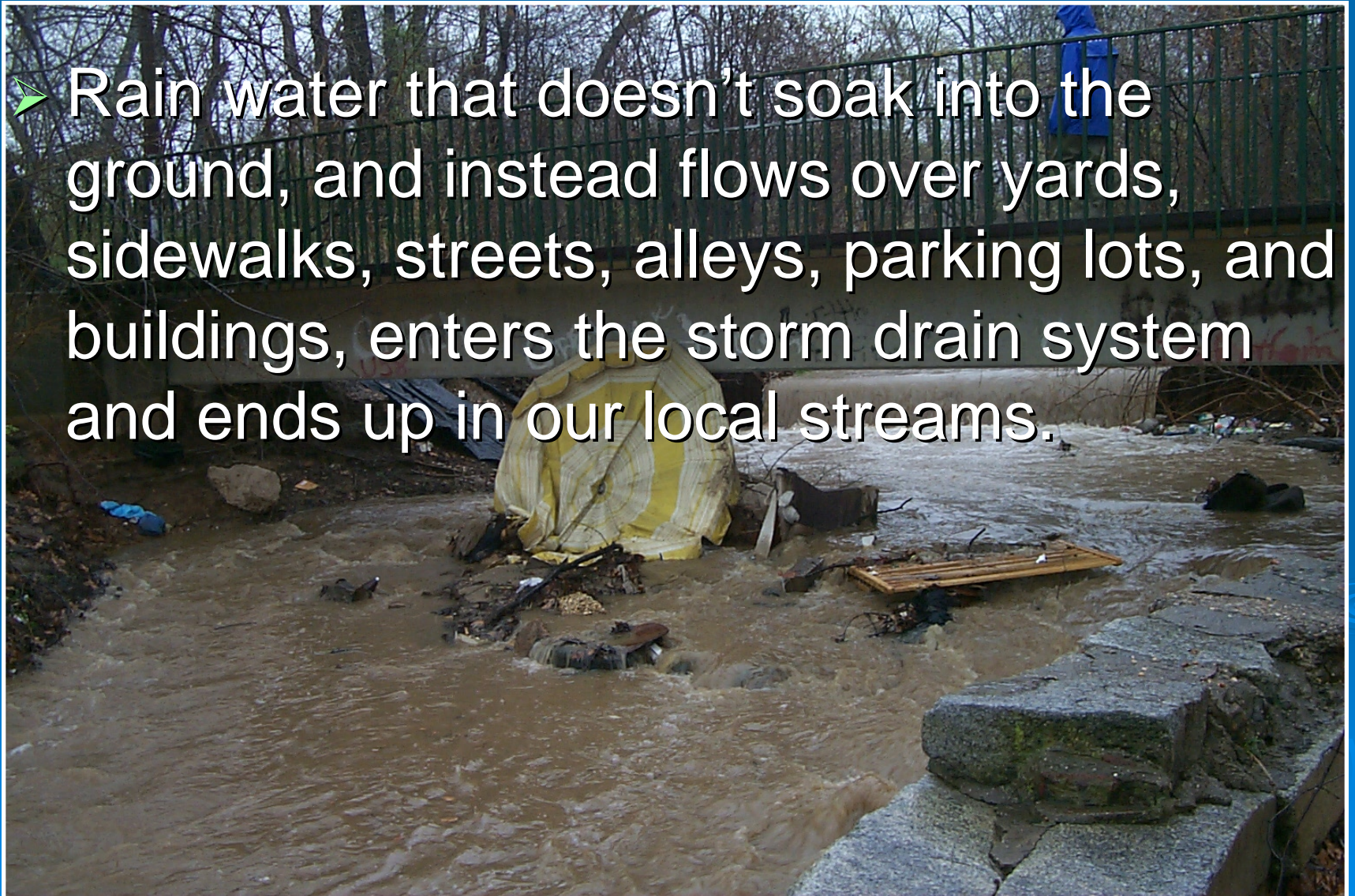
202-535-2961

RiverSmart Homes Program

- Effort to reduce pollution to the District's rivers and streams
- The city will pay up to \$1,200 for improvements to your yard that also reduce pollution
- Piloting the project in the Pope Branch Watershed
- Currently scheduling audits city-wide

What is Stormwater runoff?

- Rain water that doesn't soak into the ground, and instead flows over yards, sidewalks, streets, alleys, parking lots, and buildings, enters the storm drain system and ends up in our local streams.



How the Program Works

- 1) Homeowners contact DDOE to schedule a stormwater audit – call 202-535-2246.
- 2) DDOE audits property and provides recommendations to homeowner
- 3) Homeowners lets DDOE know what they would like to do from the recommendations
- 4) DDOE schedules a contractor to install requested items



Items offered: Shade Trees



Items Offered: Shade Trees

- Price: \$150 - \$200
- Installation: \$100
- Cost share we are asking homeowners to pay: \$50

Items Offered: Rain barrels



Items Offered: Rain barrels

- \$100-\$250 each (depending on size)
- \$100 installation
- Cost share we are asking homeowners to pay: \$30

Items Offered: Native Plant Landscaping

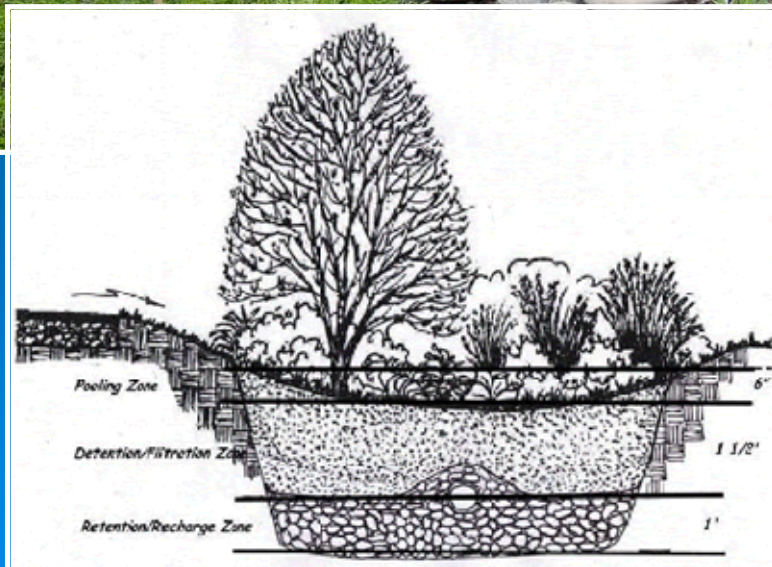
➤ Also called BayScaping



Items offered: Native Plant Landscaping

- Cost: Depends on size – for a 50 square foot approximately \$350
- Will pay up to \$1,200 (approximately 175 square foot area)
- Cost share we are asking homeowners to pay: \$75

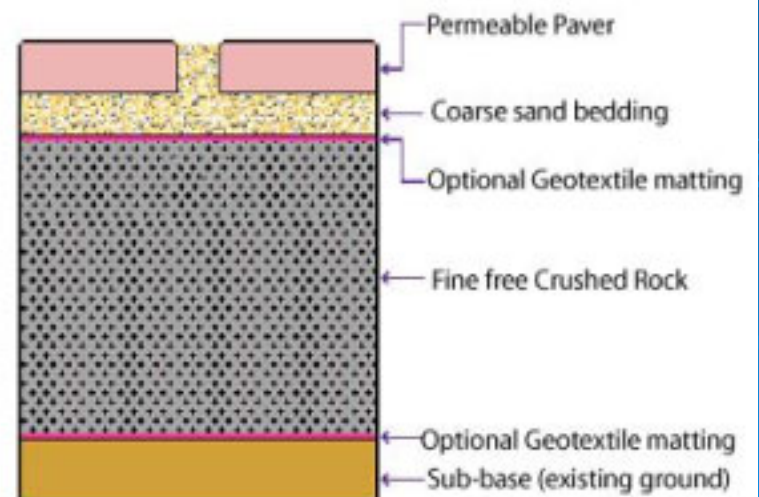
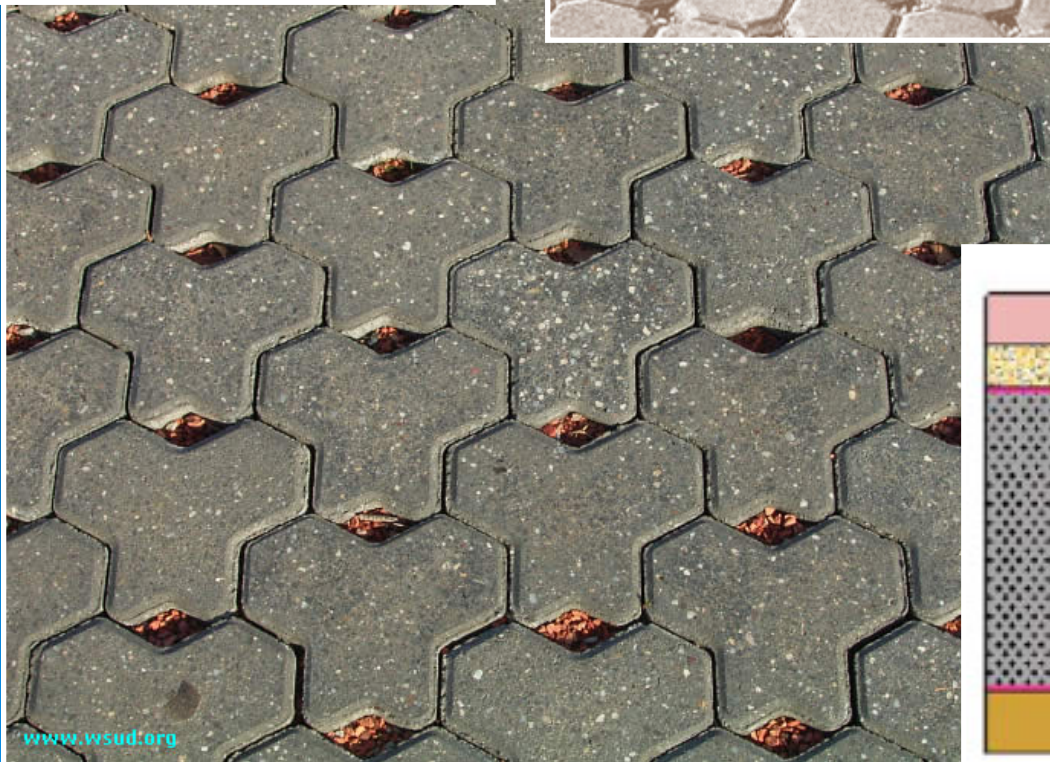
Items Offered: Rain gardens



Items Offered: Rain Gardens

- Cost: Depends on size – for a 50 square foot area \$600
- Will pay up to \$1,200 (approximately 100 square foot area)
- Cost share we are asking homeowners to pay: \$100

Items Offered: Permeable Pavers



Items Offered: Permeable Pavers

- Typical DC Driveway – 10'x20' = 200 square feet
- Price for normal installation (cement/asphalt) = \$1,200
- Price for paver installation = \$2,500-\$4,000
- DDOE will pay the difference (up to \$1,200)

Questions?

- RiverSmart Homes: Call 202-535-2246 or visit: ddoe.dc.gov/riversmarthomes