

Takoma Park

Public EV Charging Stations

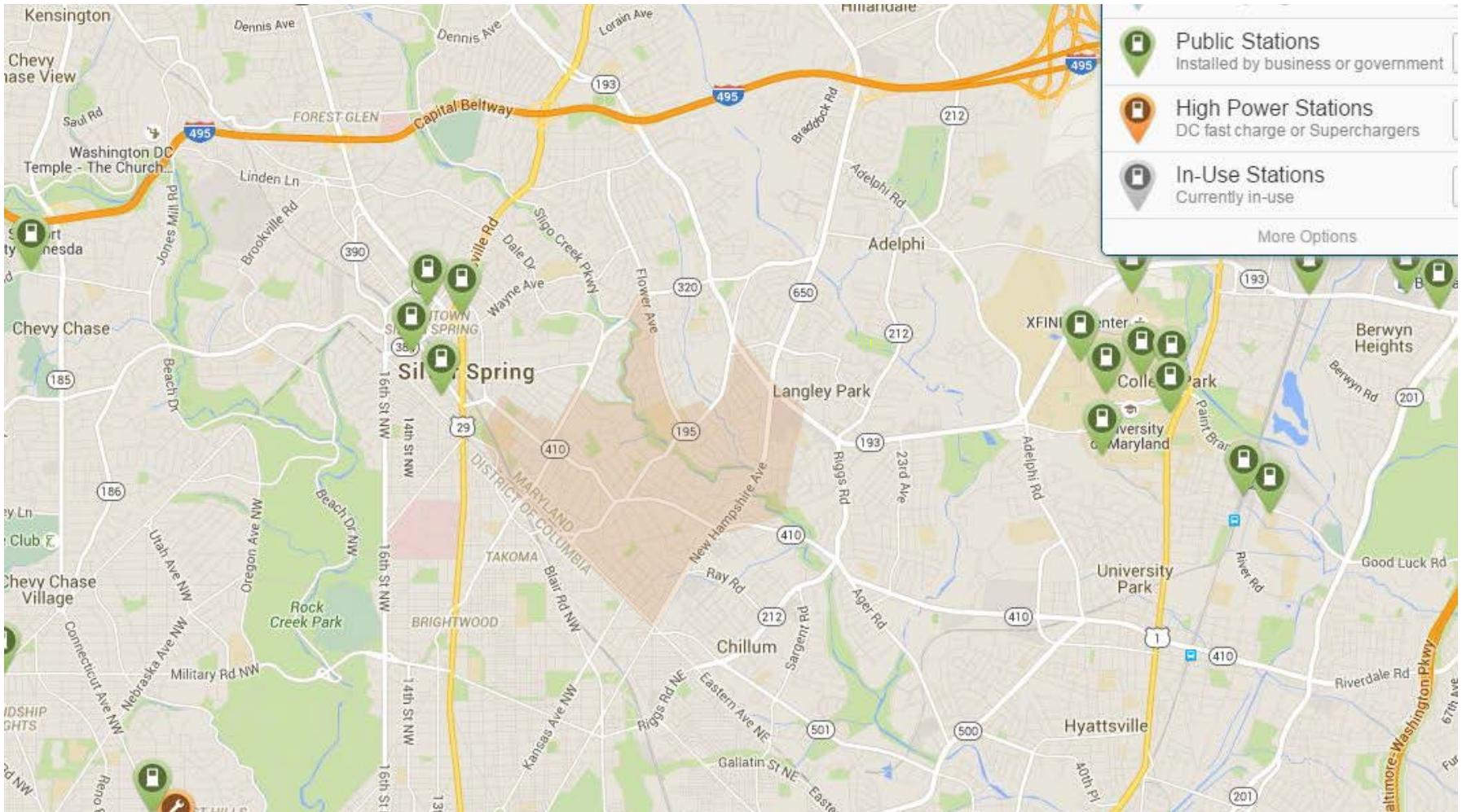
Sustainability Manager, Gina Mathias

ginam@takomaparkmd.gov

Takomaparkmd.gov/sustainability



Before: Charging Station Desert



Cost to Takoma Park

1. Equipment & Installation \$0

- *Electric Vehicle Institute installed 14 chargers free of charge, including 3 years of maintenance.*
 - *SAE J1772 plugs*
 - *Basic models*



2. Electricity Costs - ?

*All charging is currently being offered free of charge.
No noticeable impact YET.*

Approval of Project

- 1. EVI contacted City Council Member**
- 2. Staff worked out details**
- 3. No cost, no formal process for approval initiated**

Site Selection

1. Publicly or privately owned

No business owners expressed serious interest

2. Electric access

50-100 feet to panel; 240 v

3. Location to services, businesses

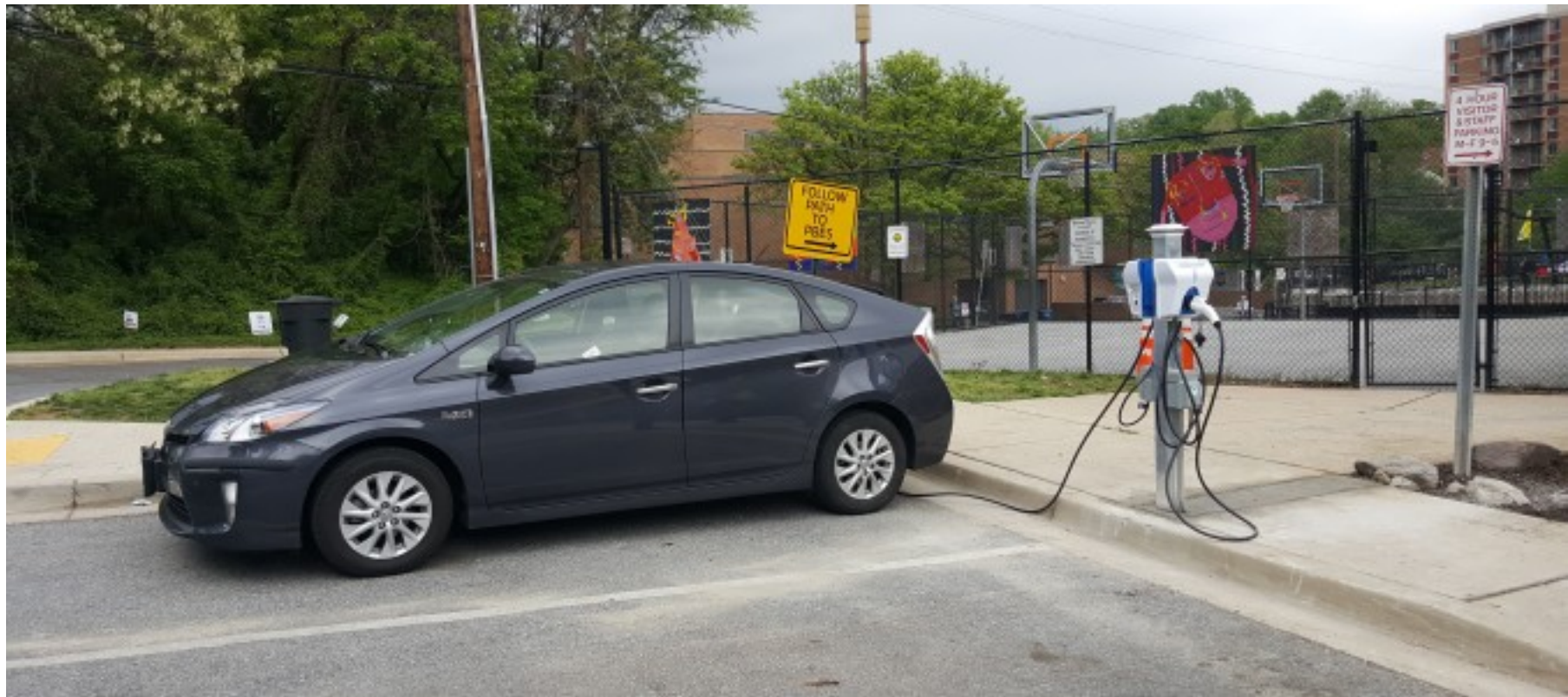
4. General parking availability

Parking restrictions are contentious



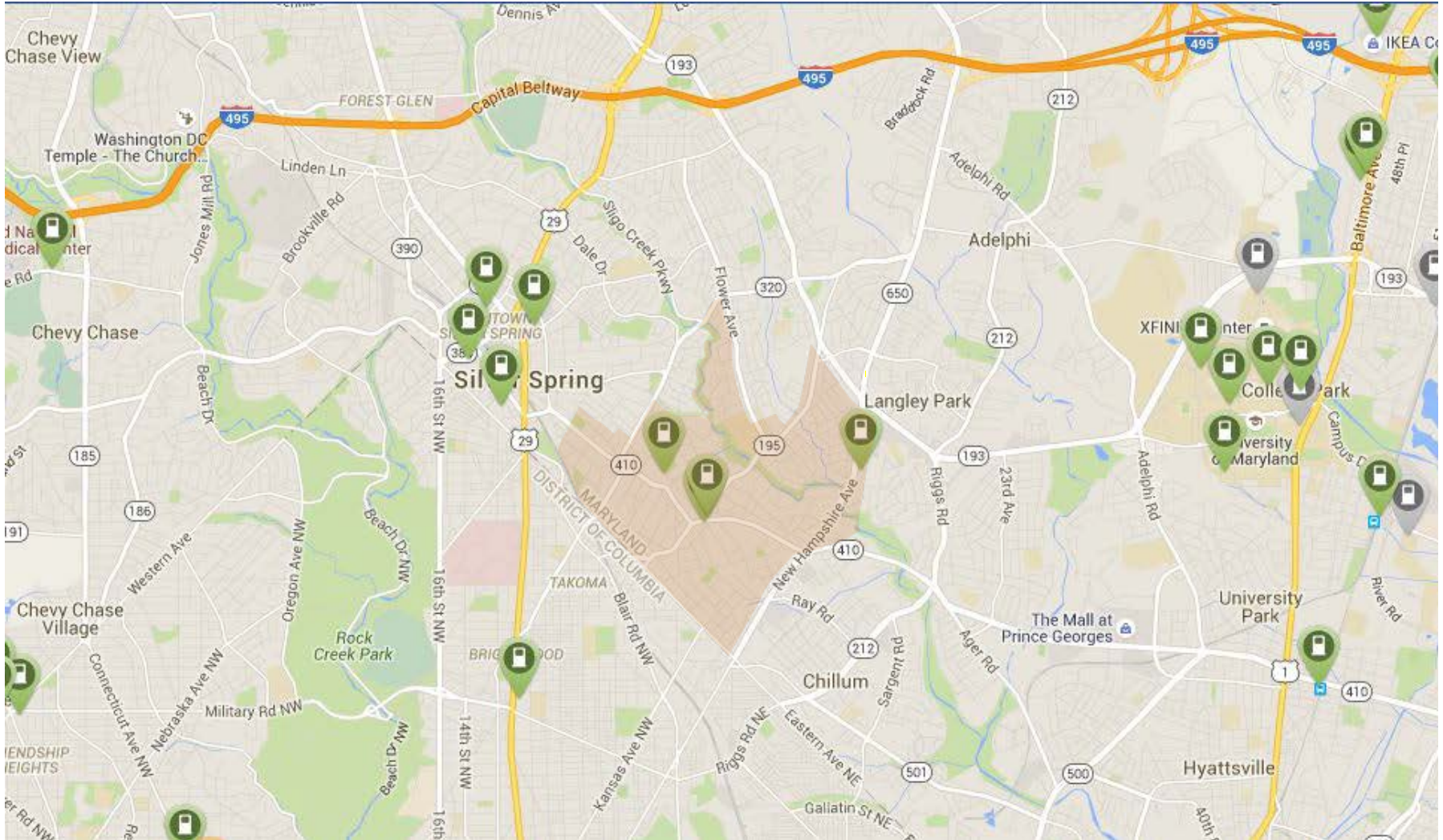
Evaluation ongoing & 3 years

- 1. Locations**
- 2. Charger model**
- 3. Maintenance**
- 4. Who should pay**
- 5. Usage**
- 6. Parking availability overall**





After: Getting Better



And ride the wind.





Gina Mathias
Sustainability Manager
ginam@takomaparkmd.gov
301-891-7623

Electric Vehicle Institute
<http://www.ev-institute.com/>
410-685-1109

