

Building a Climate Resilient National Capital Region

Preparing for Climate Change Requires Regional Coordination

The Washington, DC area is already experiencing the effects of climate change, including more frequent extreme weather events, rising temperatures, and recurring flooding. Climate scientists predict that these changes will continue, impacts will affect residents and workers, real estate assets, business, government, and institutional operations, and national resources further. The area holds a unique concentration of federal buildings, irreplaceable cultural and historic resources, nationally significant monuments and landscapes, and diverse communities.

Federal, regional, and local organizations have an opportunity to work together, share technical information, and collaborate on climate adaptation strategies tailored to the National Capital Region. Stakeholders of the region's numerous regional coordinating policy tools, information, and expertise with others. Many federal, regional, and local agencies are individually exploring climate adaptation strategies for their buildings, infrastructure, workforce, and landscapes. However, no single entity can address all its climate change risks without working with other area organizations.

Help Your Agency or Organization Prepare

Attend Upcoming Webinars and Workshops

Continuing the information-sharing and partnership-building activities that started in the autumn of 2013 and focused on built systems, NCEC, GSA, NASA, MIVCO, the Smithsonian Institution, and USGCRP are sponsoring a second series of free invitation-only webinars and workshops. The 2014 activities are focused on workforce, communities, and natural systems and are intended to assist your agency's climate adaptation planning and improve regional coordination.

Series 2: Workforce, Communities, & Natural Systems

Webinars

- Climate Change on Service Activities and Expectations (2/12/2014)
- Climate Science & Projected Impacts (2/13/2014)
- Characterizing Climate Risk & Vulnerability (2/19/2014)

Collaborative Workshops

- Shared Risks & Vulnerabilities (4/1/2014)
- Adapting Workforce, Communities & Natural Systems (4/25-30/2014)

Participants will be equipped to:

- Understand what climate threats and risks to expect
- Assess organizational impacts
- Explore a range of adaptation response/decision options
- Identify appropriate action and develop response strategies
- Integrate climate criteria into existing plans

Participants will also:



- Learn from and ask questions of climate experts
- Get the best practices in climate adaptation strategies
- Learn how other organizations' climate adaptation efforts relate to their own
- Help identify needed information and available resources
- Develop preferences for addressing shared risks

"It's so great to build smarter, more resilient infrastructure that can protect our assets and resources, and withstand some powerful storms."

"It's a pleasure with communities working together to prepare for droughts and floods."

"And we'll also invest our climate data and SOI climate imagery to the public."

Resilient Smart Climate, Speech on climate change @ Georgetown University, June 21, 2013

Two and a half miles down in Bethesda, MD (below) following June 29, 2012, demolition, a whole new 2.5 million sq ft commercial and retail in Maryland DC and Virginia. The store is being built in Capitol Circle (understand February 2013 "Demographic") at which Washington DC declared a new emergency and the federal government shut down for a 3 days.

Photo by Bill Johnson/Photomontage.com

For more information, visit <http://nccrj-18.org/ncrcrj/ncrcrj-resilient-ncrj.asp>

National Capital Planning Commission | GSA | NASA | USGCRP | MIVCO | United States Global Change Research Program


Orientation Webinar

Scope & Activities Focus: Workforce, Communities, and Natural Systems

Kim Toufexis (NASA)
Christina Hudson (Leidos)

February 12, 2014

1

You are your organization's point of contact!

?????

How did I get so lucky?

2

Today's Agenda

- Introduce core planning team
- Share a vision
- Announce upcoming webinars and workshops
- Let you know how you (and others) can participate
- Answer questions

Core Planning Team



National Capital Planning Commission (NCPC) – Amy Tarce



GSA – Ann Kosmal and Robin Snyder



NASA – Kim Toufectis and Sam Higuchi, Sarah Burgess-Herbert, Kim Gotwals, Christina Hudson, Christine Mataya



Metropolitan Washington Council of Governments (MWCOG) – Amanda Campbell



Smithsonian Institution – Ann Trowbridge



US Global Change Research Program (USGCRP) – Emily Seyller



Vision:
Climate resilient National Mall and
National Capital Region (NCR)
for future generations.

How?
Build upon science-informed
planning and decision making and
sound risk management.

<http://www.emilydickinsoninternationalsociety.org/node/123>

5



**Objectives of the Climate Resilient
National Capital Region Effort**

1. Build capacity, capability and confidence
2. Create networks and partnerships
3. Encourage proactive adaptation planning

<http://kenlevine.blogspot.com/2010/04>

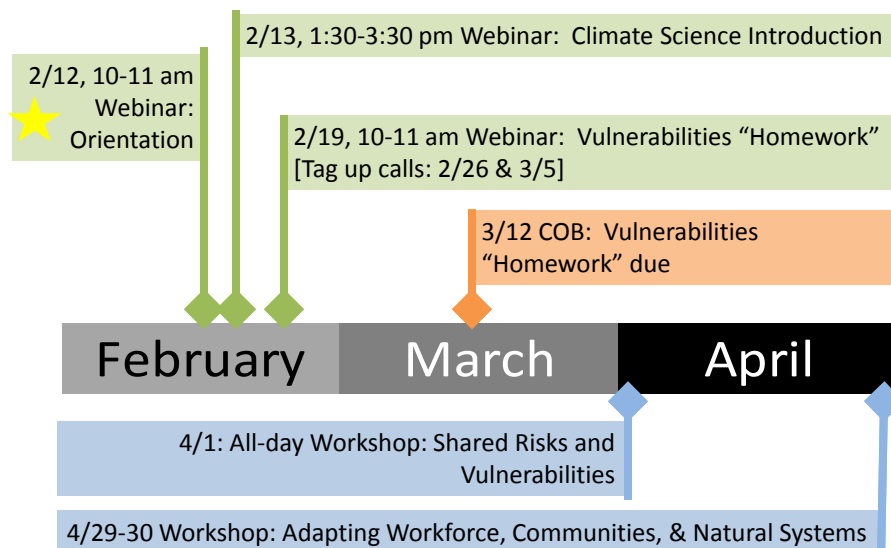
6

We are all trying to figure out how to:

- Acquire useful climate information
- Address current climate-related risks
- Characterize future climate risks
- Develop long-term, strategic adaptation strategies
- Integrate climate considerations into plans, decision-making processes and culture
- Avoid reinventing the wheel

.....with our organization's
MISSION and GOALS in mind.

2014 Planned Webinars & Workshops – Workforce, Communities, and Natural Systems

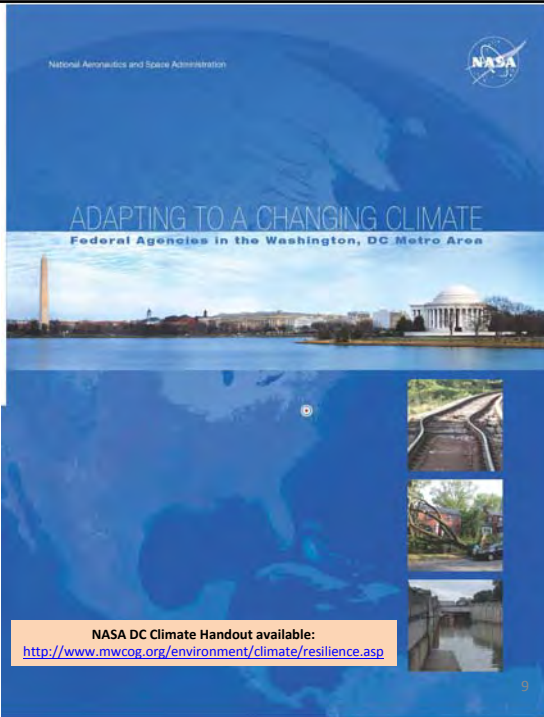


Climate Science Intro Webinar

Thursday, February 13, 2014
1:30 – 3:30 pm

- Review the basics of climate science
- Learn how climate affects the NCR now
- Learn what NASA models project for future climate in the NCR
- Listen to how agency managers use climate projections to assess risk
- Review NASA DC-focused Climate Handout

Building a Climate Resilient National Capital Region



National Aeronautics and Space Administration

ADAPTING TO A CHANGING CLIMATE
Federal Agencies in the Washington, DC Metro Area

NASA DC Climate Handout available:
<http://www.mwcog.org/environment/climate/resilience.asp>

9

Characterize Risks Webinar

Wednesday, February 19
10 – 11 am

- **Set up assignment -- Your Organization's Top 4 Risks:**
 - Natural Systems
 - Workforce/Communities

vs



Climate variables
(gradual and extreme events)
- **Review spreadsheet** to capture common risks / vulnerabilities and current activities

Vulnerabilities
"Homework"

Building a Climate Resilient National Capital Region

Identify who should be involved and attend this Webinar: ★

- Ability to teach others within organization to prepare for:
 - Top 4 Risks due 3/12/14
 - Vulnerability Sharing Workshop on 4/1/13
- Familiar with your organization:
 - Impacts and experiences thus far
 - How impacts have been addressed
 - Planned activities

Vulnerabilities "Homework"

Organization top 4 risks

- Natural Systems
- Workforce/Communities
- Climate variable
- Current and planned activities

DUE Wednesday, March 12, 2014

Risks and Vulnerabilities Workshop

Tuesday, April 1, 2014
8:30 – 4:30
GSA Building

➤ Review consolidated risks / vulnerabilities

➤ Collectively agree on common risks

➤ In groups, develop topics to address in Adaptation Strategies Workshop (April 29-30)

Building a Climate Resilient National Capital Region

11

Sneak Peak of Homework

		Timeframe / Scale of Impact					
Asset	Climate Variable	Today	2020s	2050s	Critical Threshold of Asset	Comments	
		Gradual					
e.g., Name or type of asset, system, etc.	Sea level rise	minor	minor	minor		Increasing numbers of buildings face weekly and daily flooding	
	Precipitation variability	minor	moderate	moderate		Minimal impact	
	Higher average temperature	major	major	major		Minimal impact	
			Extreme Events				
	SLR + storm surge						Large and growing # of buildings likely face significant flooding risk
	Heavy precipitation						Minimal impact
	Heat waves						INDIRECT: impact primarily relating to increased risk of power outages
	Drought						

Building a Climate Resilient National Capital Region

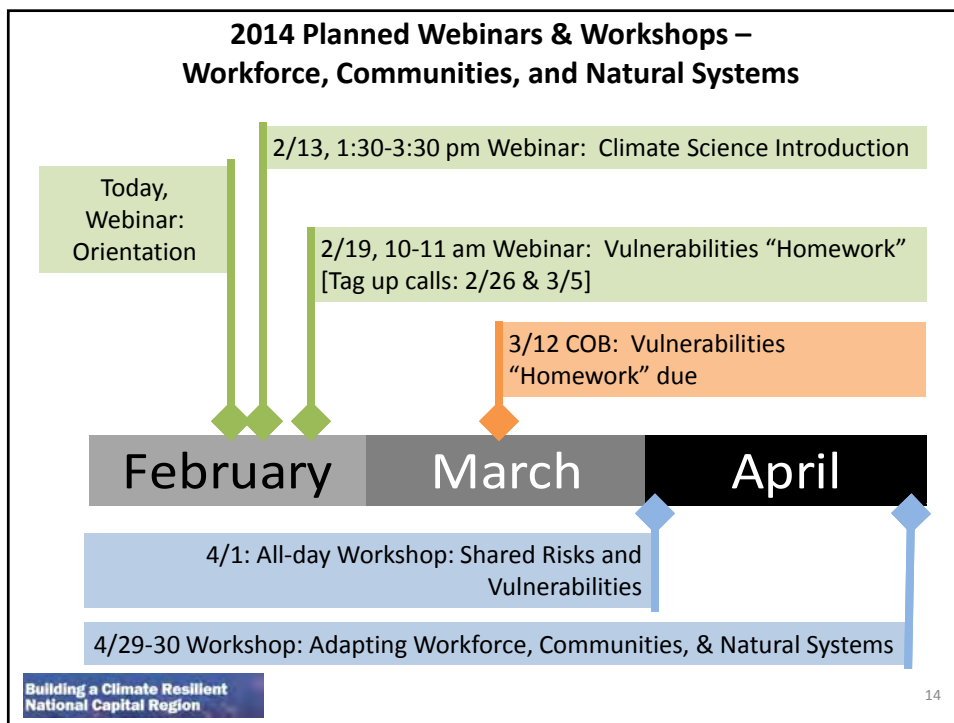
Major risk
 Moderate risk
 minor risk

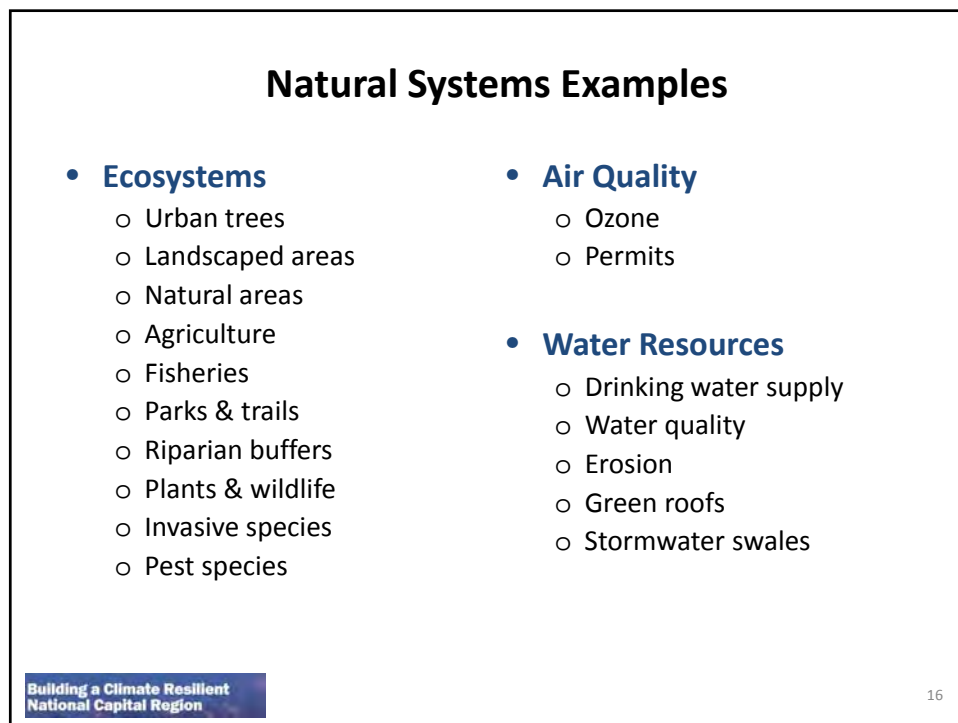
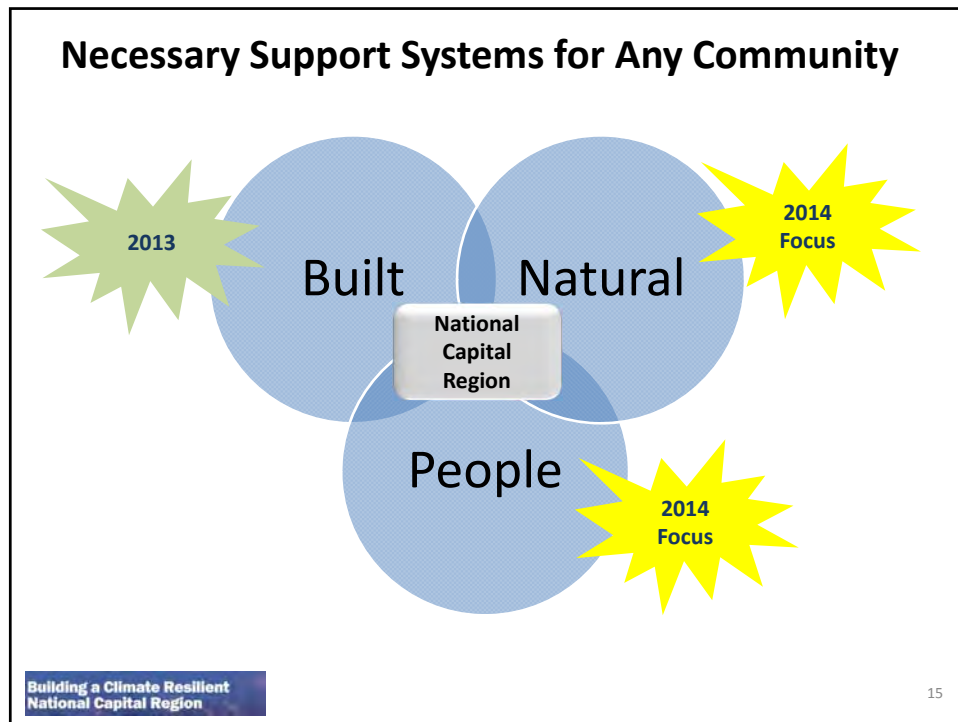
12

**Adapting Natural Systems, and
Workforce/Communities
Workshop**
2 days – April 29 - 30, 2014
GSA Building
**Focus: Topics identified by groups at April 1
Risks & Vulnerabilities Workshop**

- What are adaptation strategies for long-term sustainability?
- How can we invest wisely together?
- What are the priority activities that should take place:
 - immediately?
 - by the end of 2016?
 - by the end of 2030?
 Both for your agency/org and with the other participant orgs?

**Building a Climate Resilient
National Capital Region** 13





Workforce/Community Examples

- **Employees**
 - Telecommuting policies
 - Staffing capabilities/recruitment
 - Occupational health
 - Fitness and well-being
 - Unions
 - Employee assistance programs
- **Emergency Response**
 - Safety
 - Continuity of Operations
 - Fire protection
 - Employee emergency notification
 - Emergency recovery
 - Security
- **Public Health**
 - Air quality/ozone
 - Infectious diseases
 - Heat stress
 - Allergies & asthma
- **Community**
 - Daycare, eldercare, or shelters
 - Economic vigor of the region, including adequate workforce

Who Should Be at the Table?

- Do you manage **natural landscapes** that will be affected by changing climate conditions?
- Do you have responsibilities for compliance with **air quality regulations**?
- Are you responsible for managing **invasive species** (plants, animals, or insects?)
- Are you responsible for the **drinking water supply** for communities in the NCR?
- Does your job relate to **water quality concerns** in the NCR?
- Are you interested in supporting the **economic vitality** of the NCR?
- Are you responsible for managing either **citizen health or occupational health, fitness, or mental wellness**; or do you provide a related service for the NCR?
- Are you responsible for maintaining **emergency operations, emergency response/recovery, employee emergency notification**, or related capabilities for the NCR?
- Are you responsible for providing **security, fire protection, or other first response services** for the NCR?
- Do you manage **human resources for the workforce** of the NCR, including staffing capabilities, payroll, recruitment and retention, training and development, contracts, telecommuting and alternative work scheduling policies, etc.
- Are you responsible for maintaining or monitoring **living and/or working conditions** (such as employee safety, unions, etc.) for the citizens of the NCR?
- Do you provide **childcare, eldercare, or services for disadvantaged groups** (e.g. homeless shelters) in the NCR?
- Are you responsible for helping maintain **family wellness** in the NCR (such as promoting work-life balance or providing employee assistance services)?

What to do next?

- Put Webinar / Workshop dates on calendar
- Review Slide 18 - *Who Should Be at the Table?*
- Identify people in your organization who should participate (and help with *Vulnerabilities Homework*)
- Forward Outlook Invites for:
 - o Climate Science Webinar (2/13, 1:30-3:30 pm)
 - o Characterize Risk Webinar (2/19; 10-11 am)
- Use RSVP form to:
 - 1) to nominate new people
 - 2) remove your name from list

https://docs.google.com/forms/d/1RwJvV05Tms5E2x3G98I_VvoL6jWqe5eSRwYVopvYDGw/edit?usp=sharing

QUESTIONS?

Back up

Core Planning Team – Contact Info

- NCPC - Amy Tarce, 202-482-7241, amy.tarce@ncpc.gov
- GSA – Ann Kosmal, 202-219-1595, ann.kosmal@gsa.gov
Robin Snyder, 202-690-8981, robin.snyder@gsa.gov
- NASA – Kim Toufectis, 202-358-2273, Kim.W.Toufectis@nasa.gov
Sam Higuchi, 202-358-0149, shiguchi@nasa.gov
- MWCOC – Amanda Campbell, 202-962-3324,
acampbell@mwco.org
- Smithsonian Institution – Ann Trowbridge, (202) 633-6555,
TrowbridgeA@si.edu
- USGCRP – Emily Seyller, 202-419-3492, eseyller@usgcrp.gov

Contractors on Core Planning Team – Contact Info

- **Leidos** (*for NASA Office of Strategic Infrastructure*) –
 - Christina Hudson, 571-282-8896, christina.c.hudson@leidos.com
 - Kim Gotwals, 919-401-4643, kimberly.b.gotwals@leidos.com
 - Sarah Lynagh, 703-676-5645, sarah.b.lynagh@leidos.com
- **Booz Allen Hamilton** (*for NASA Earth Science Division*) –
 - Christine Mataya, 202-294-4833, mataya_christine@bah.com
 - Sarah Burgess-Herbert, 703-624-1989, burgess-herbert_sarah@bah.com