

Changes in the Urbanized Area for Metropolitan Washington

Cooperative Forecasting and Data Subcommittee
10 April 2012

Charlene Howard, GISP
TPB/COG



Presentation overview

- Definitions and background
- A look at the 2010 Census Urbanized Areas
 - Notable changes
 - Observations and implications

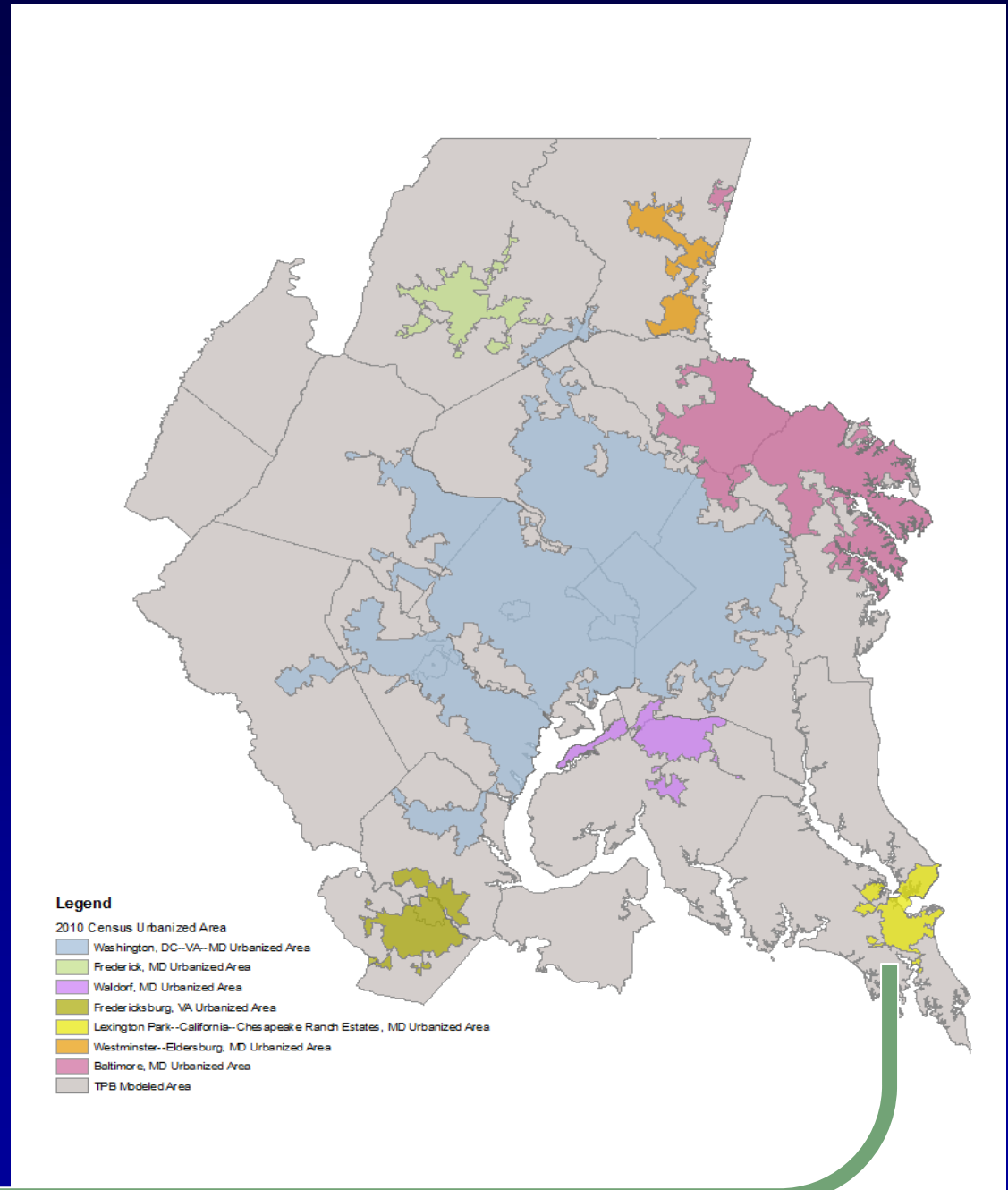
Definitions & Background

- Product of the Census Bureau
 - Delineated after the decennial Census
 - Distinction between urban and rural land
 - Expressly not developed for non-statistical purposes
 - Just released on 27 March 2012
- Based on population counts/density
 - Urbanized Areas (UA) - over 50,000 persons
 - Urban Clusters (UC) - between 2,500 and 50,000 persons
 - Rural designation for other areas not UA or UC

2010 Urbanized Areas for the TPB Modeled Area

- Seven Urbanized Areas within the modeled area
- Growth around all current UAs
- New urbanized area in Calvert/St. Mary's Counties-

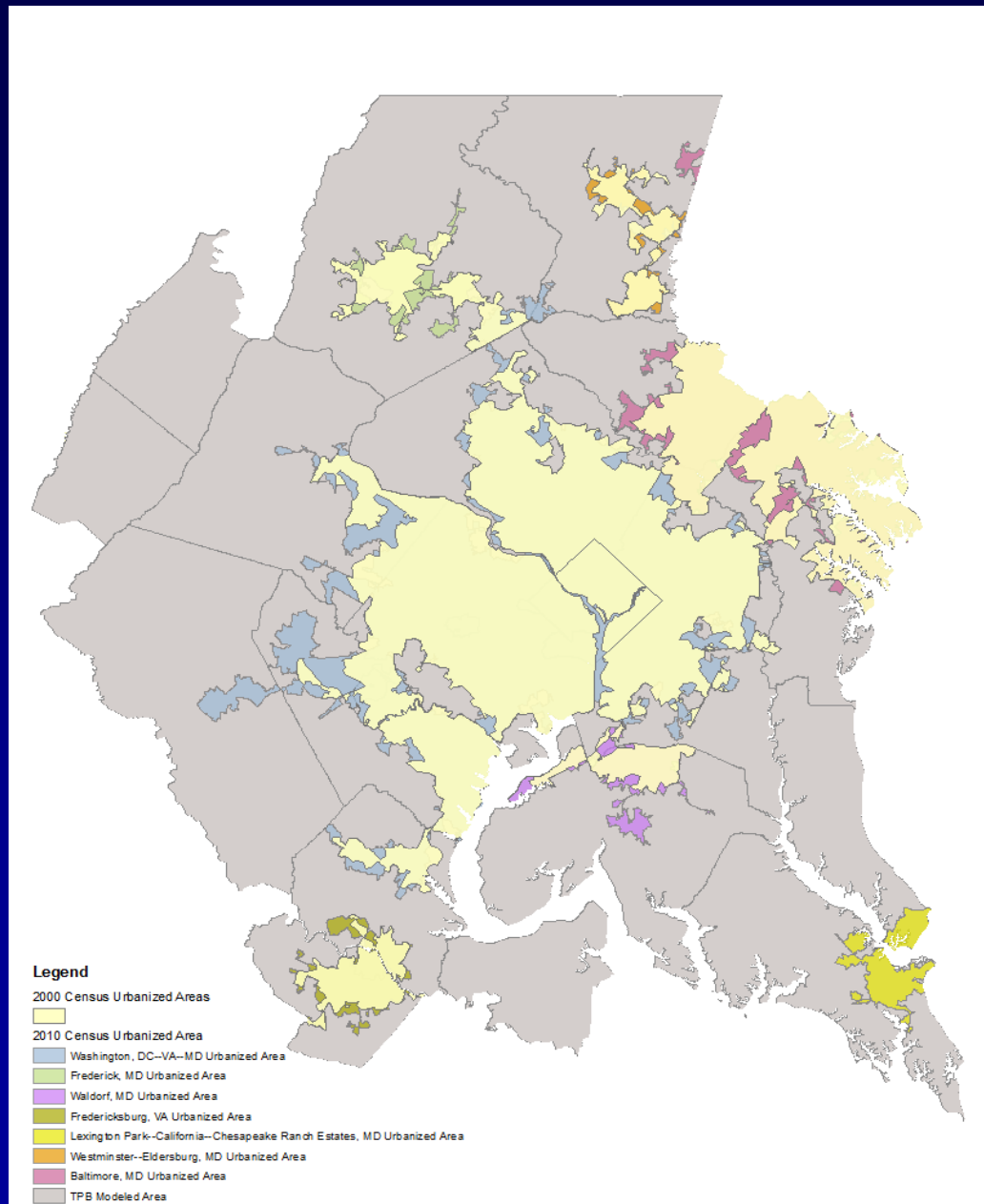
Chesapeake Ranch Estates-
Drum Point, MD Urban
Cluster has become the
**Lexington Park--California--
Chesapeake Ranch Estates,
MD Urbanized Area**



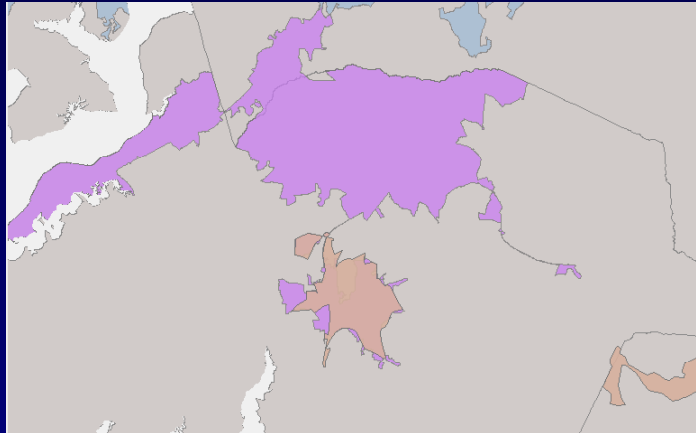
Comparison of 2000 and 2010 Census

Urbanized Areas

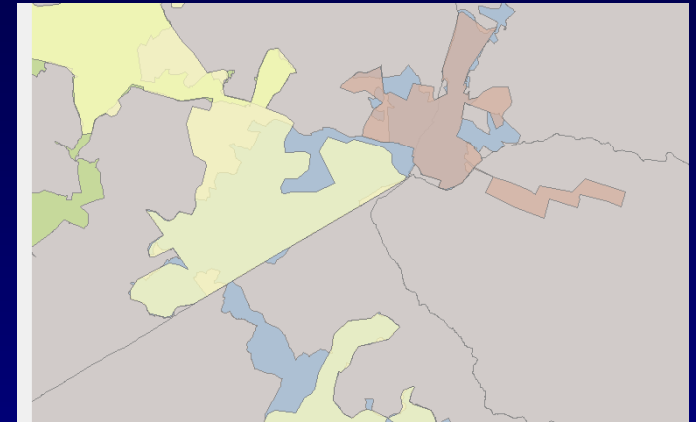
- Urbanization expanding throughout the modeled region
- The Washington, DC--VA--MD UA and the Fredericksburg, VA UA still remain separate urbanized areas
- Several 2000 Urban Clusters are now part of 2010 Urbanized Areas



UCs to UAs, UAs to UAs

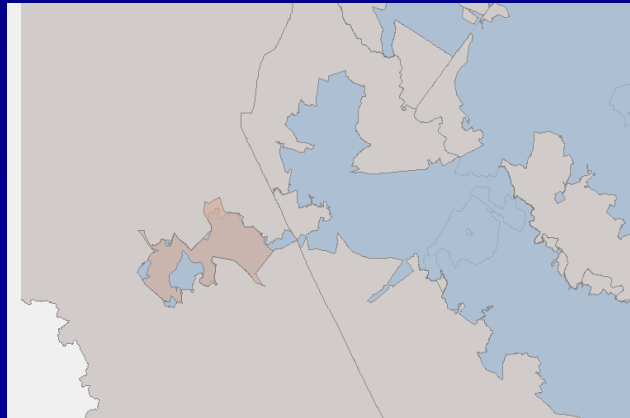


- La Plata becomes part of the Waldorf UA



- Mount Airy, MD UC becomes part of the Washington, DC--VA--MD UA
- Part of the 2000 Frederick MD UA becomes part of the Washington, DC--VA--MD UA

- Warrenton, VA UC becomes part of the Washington, DC--VA--MD UA



Observations and implications

- Continued separation of the DC and Fredericksburg Urbanized Areas
- A new Urbanized Area for MD.....another MPO in the making
- The DC metro gallops into horse country....what does this mean for Fauquier County?