



Public Space Recycling



Gary Hensley

Program Analyst

Department of Transportation & Environmental Services

Resource Recovery Division

City of Alexandria

Overview



- Originally only had trash containers in public spaces
 - Approximately 1,300
- Mix of various container styles
 - Particularly in parks
- City has since adopted the Victor Stanley SD-42 Ironsites as the standard
- Approximately 1,000 trash containers after removal and more strategic location in the parks
- Approximately 250 recycling containers now in use



Growing Number of Containers



- Sponsorship
- Pilot
- Larger scale phased implementation
 - As budget allowed
- Development SUP
 - One pair per block face if applicable



Pilot at Market Square (City Hall)



- Installed 8 blue recycling SD-42s
- This was the first attempt at public space recycling
- Chose blue as the standard color
- No dome lid/rain bonnet



Phased Recycling Container Roll-out



- Phase 1
 - 85 recycling containers paired with existing trash containers
 - Athletic fields
 - Parks
 - High pedestrian traffic areas (King St, Union St, Mt Vernon Ave)
- Phase 2
 - 72 additional containers installed
 - Parks
 - King St & Mt Vernon Ave (cont.)
- Phase 3
 - 64 additional containers installed
 - Waterfront Parks





Lid Type

- Dome (current style for both trash and recycling)



Lid Type (cont.)

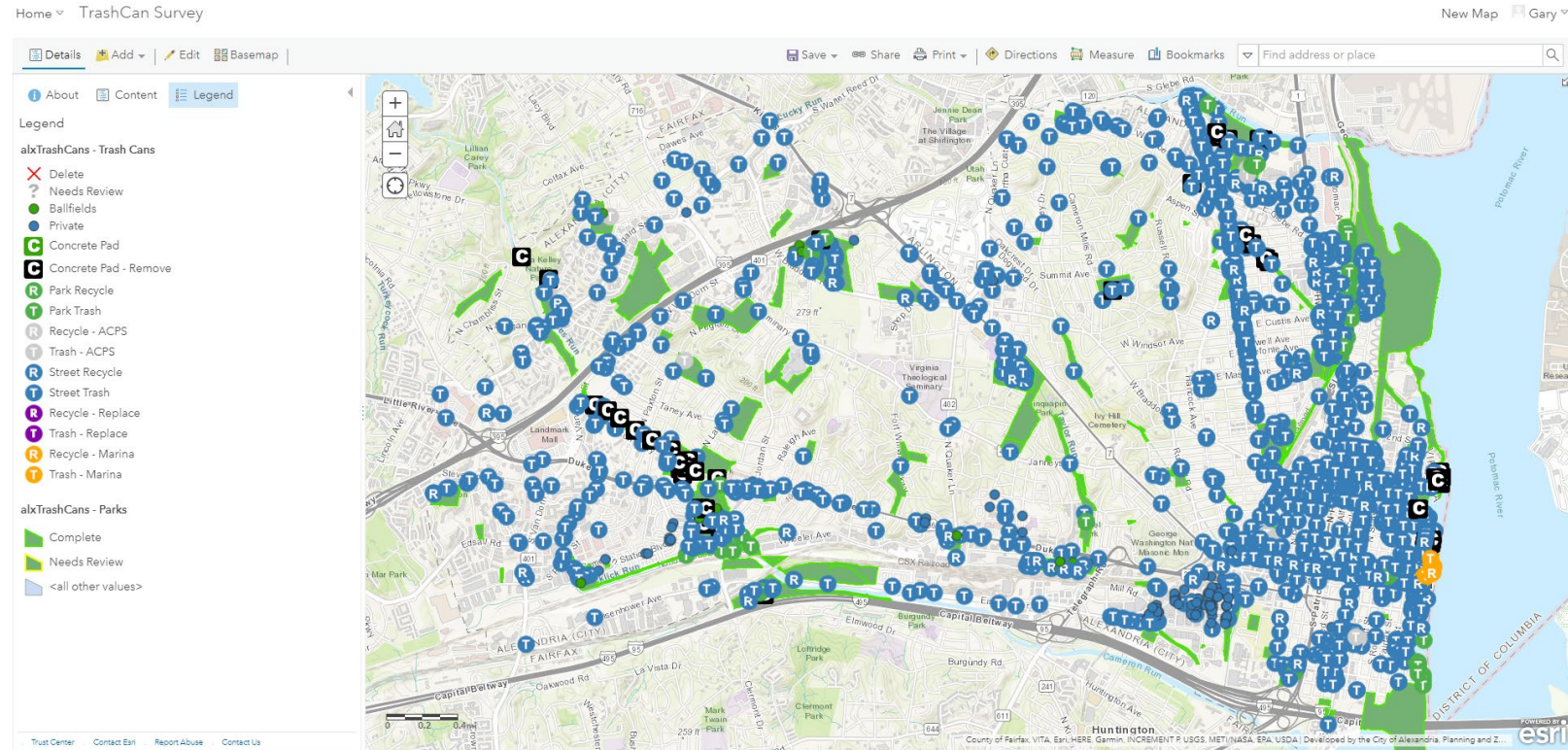
- Convex with self-closing lid
 - Help prevent contamination
 - Pilot will assist in determining a switch to this style



Geolocating & Routing



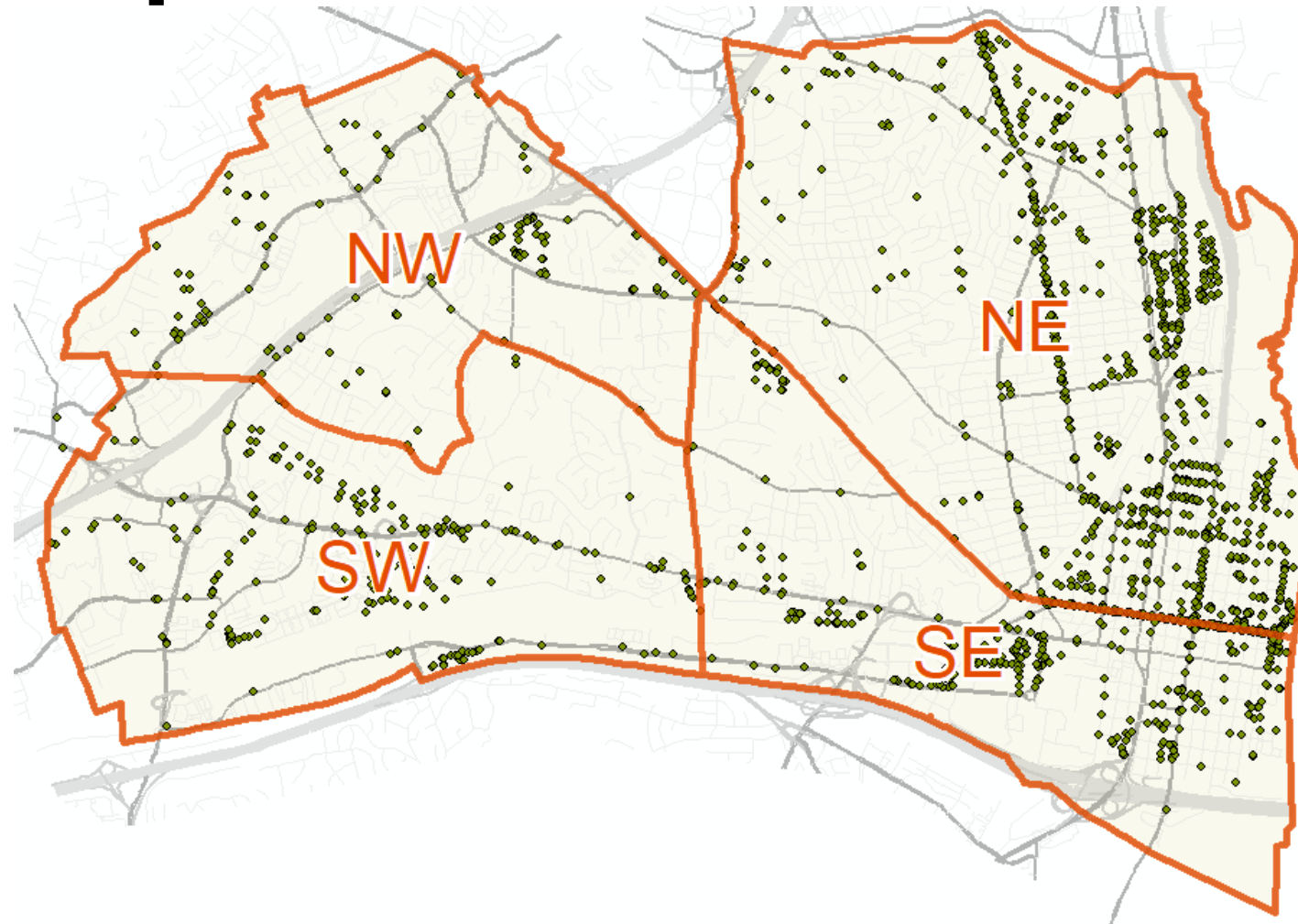
- Data collection using tablet in the field
 - Issue is that the data is static
 - Relocations, additions, removals, etc quickly compromise the audit data
- GIS Routing
 - This was unsuccessful as the generated turn by turn directions were not able to be used



Current Operations



- Four collection zones



Current Operations (cont.)

- Two rear load trucks for trash
- One rear load truck for recycling



Current Operations (cont.)



- Public space trucks supplement collection at a small number of City facilities that have rear load collection as well as collection of overflows at the City's four recycling drop-off centers



Challenges



- Contamination
 - Food
 - Pet waste
- Overflows
 - Adjustments for high traffic or sensitive areas
 - “Hot List” route created
- Odor
 - Dairy products in summer months (ex. Near ice cream parlor)



Challenges (cont.)



- Inventory Management
 - New container placement
 - Existing container relocation
 - Damaged containers removed from inventory
 - Static information based on last audit
- Paired Containers Being Moved Apart
 - Critical to keep trash & recycling immediately adjacent to one another
- Staffing
 - Reports of simultaneously collecting trash and recycling into trash truck (may be related to shortages in staff on certain days)
- Public Perception
 - Concern when highly contaminated recycling containers need to be emptied as trash
- Funding





Next Steps

- Audits
 - Level of contamination in recycling
 - Pre and post switch from dome to convex lid
- [Victor Stanley](#)
 - Relay system
 - Routing
 - Collection frequency efficiencies





Thank You!

Questions & Answers

More information on Resource Recovery can be found at:

www.alexandriava.gov/ResourceRecovery

 alexandriava.gov/TES  @TESAlexandriaVA  @AlexandriaVATES  @AlexandriaVATES

