

# Forecasted Infill Development and Local Attraction/Repulsion to Urban Growth in the Chesapeake Bay Watershed (2002 to 2030)



Chesapeake Bay Watershed

Counties

Chesapeake Bay

## Phase 5 Watershed Modeling Segments

Infill development (acres)

1 - 200

201 - 400

401 - 600

601 - 800

801 - 1000

1001 - 3900

No growth or no infill

## SLEUTH Excluded Layer

35 (most attractive)

40

45 (slightly attractive to growth)

50 (baseline: no effect)

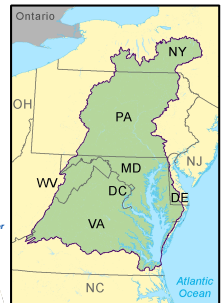
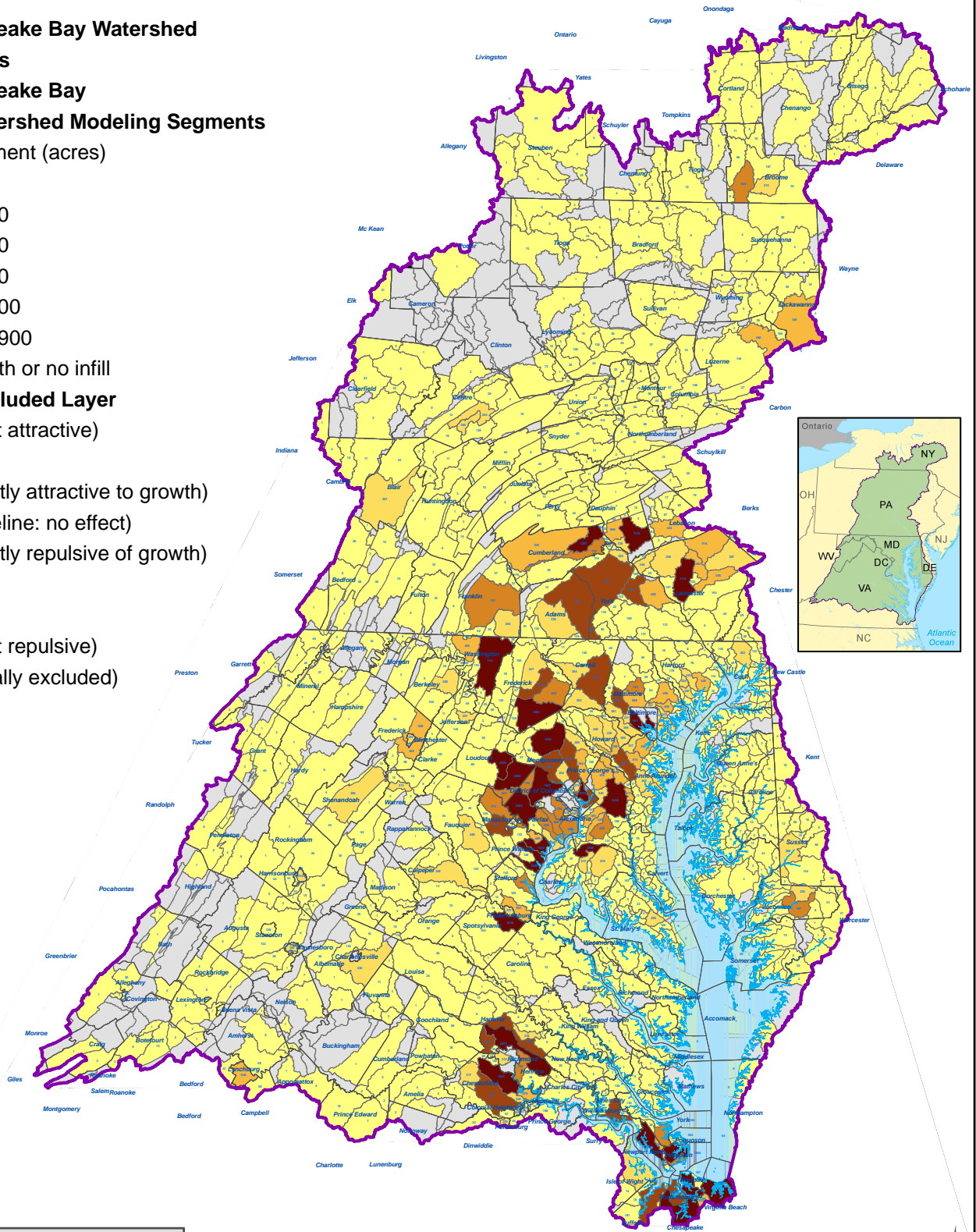
55 (slightly repulsive of growth)

60

65

70 (most repulsive)

100 (totally excluded)



Data Sources: Chesapeake Bay Program  
 For more information, visit [www.chesapeakebay.net](http://www.chesapeakebay.net)  
 Disclaimer: [www.chesapeakebay.net/termsfuse.htm](http://www.chesapeakebay.net/termsfuse.htm)

