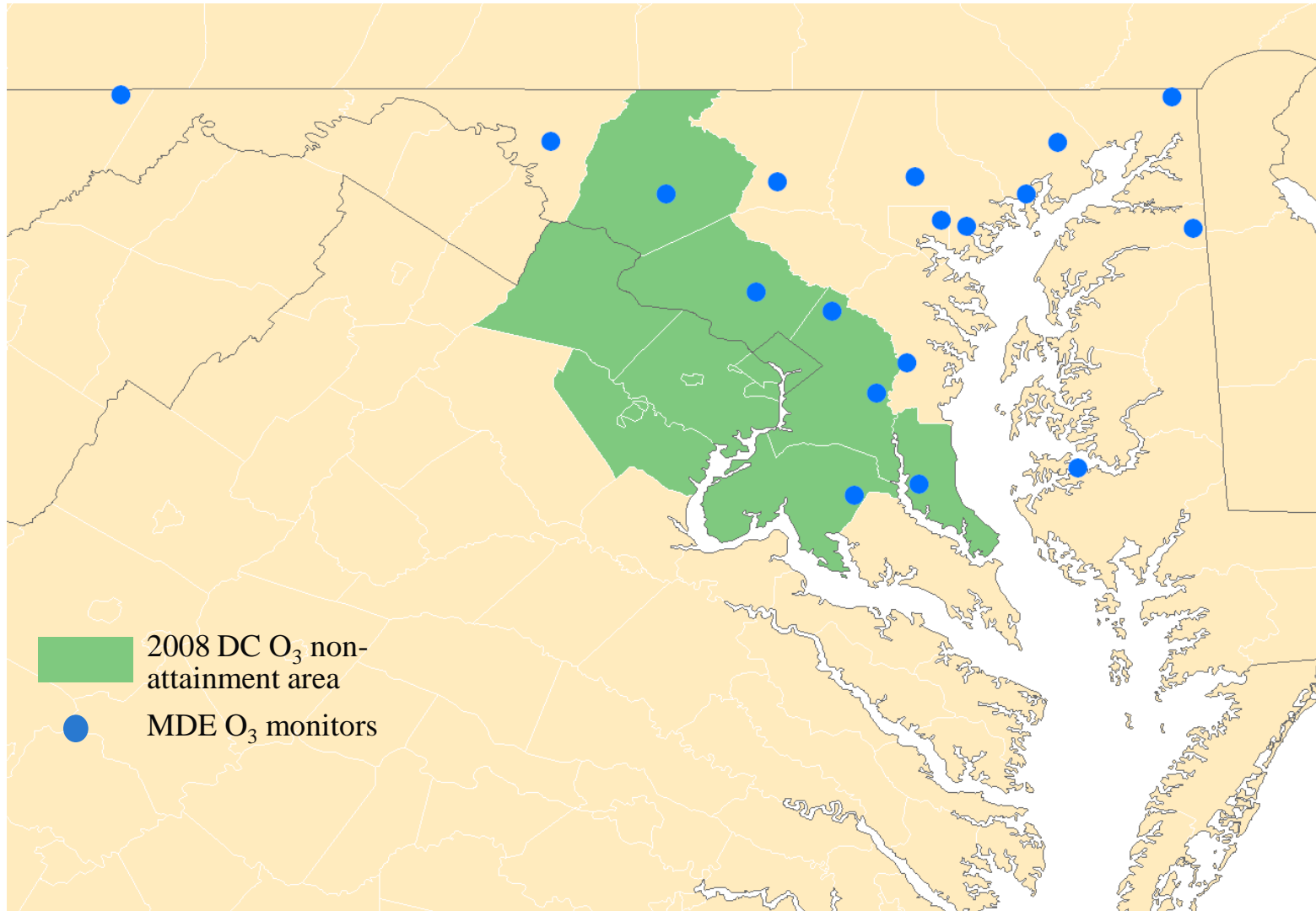


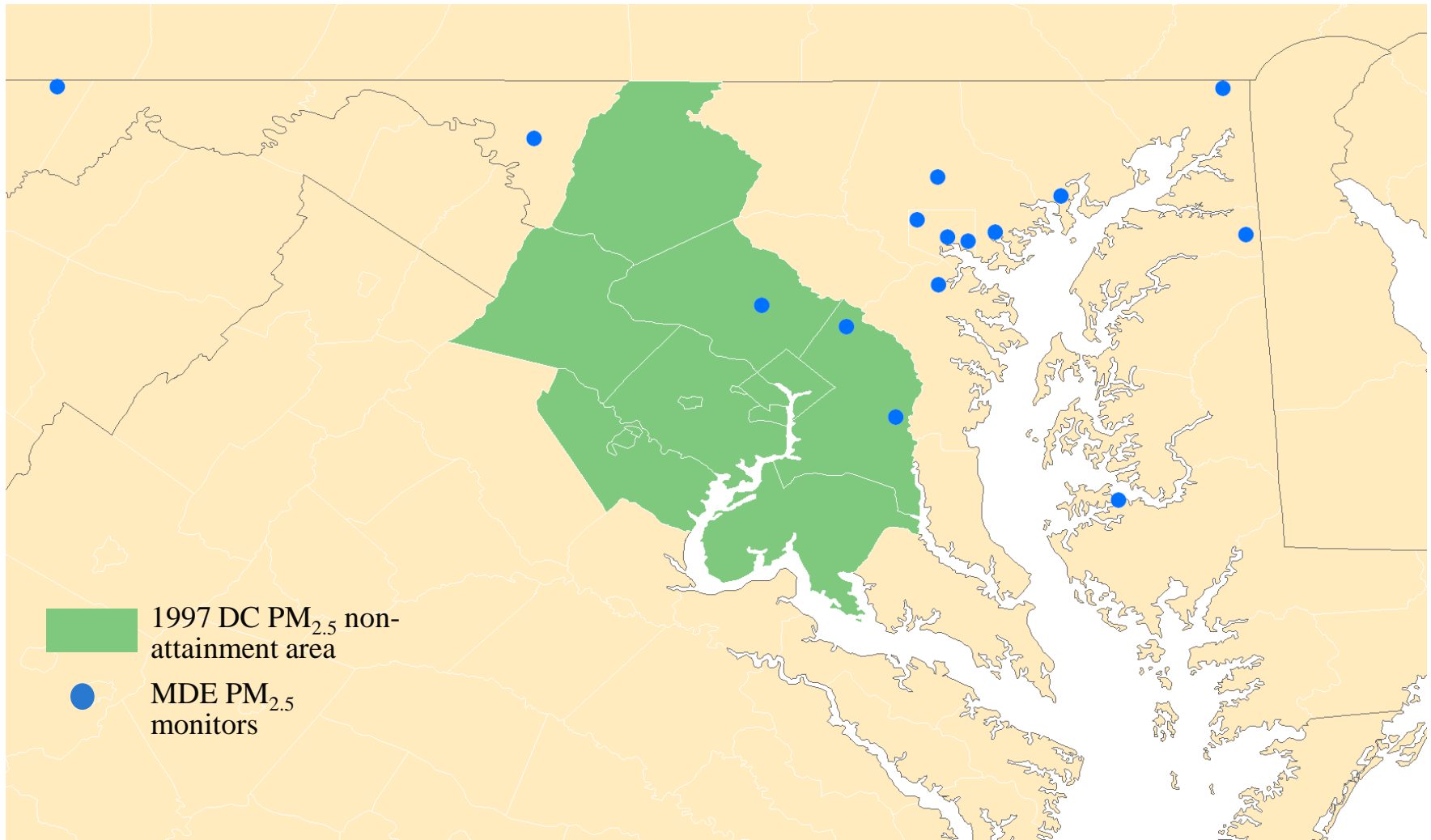


Summary of MDE monitors in DC non-attainment areas

MDE O₃ Monitors

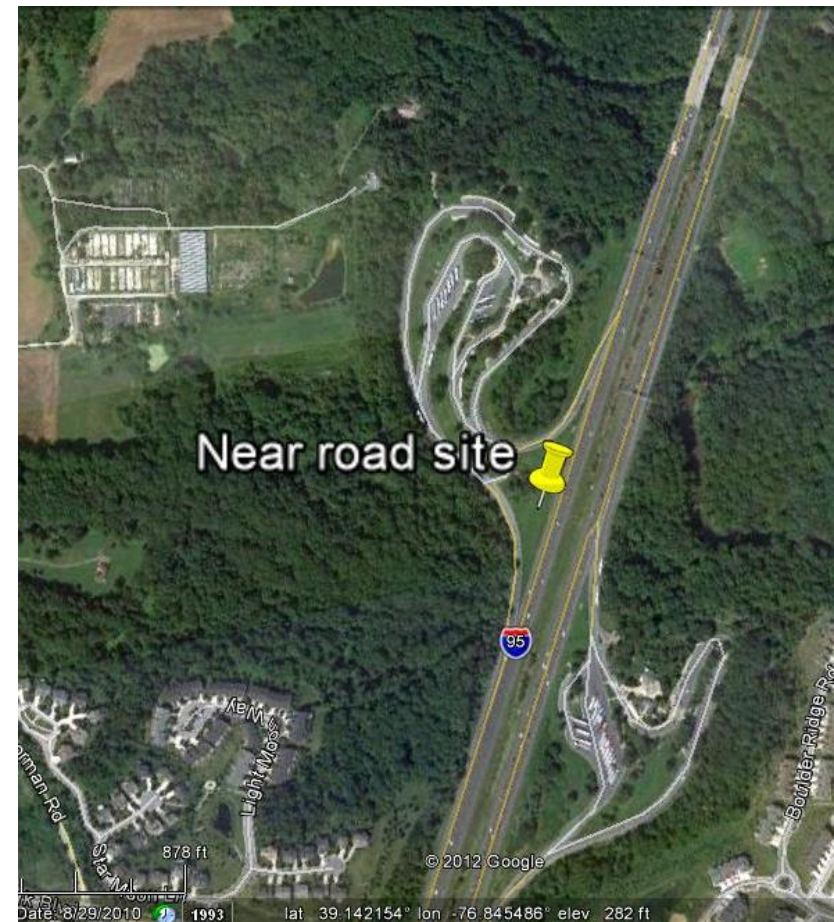
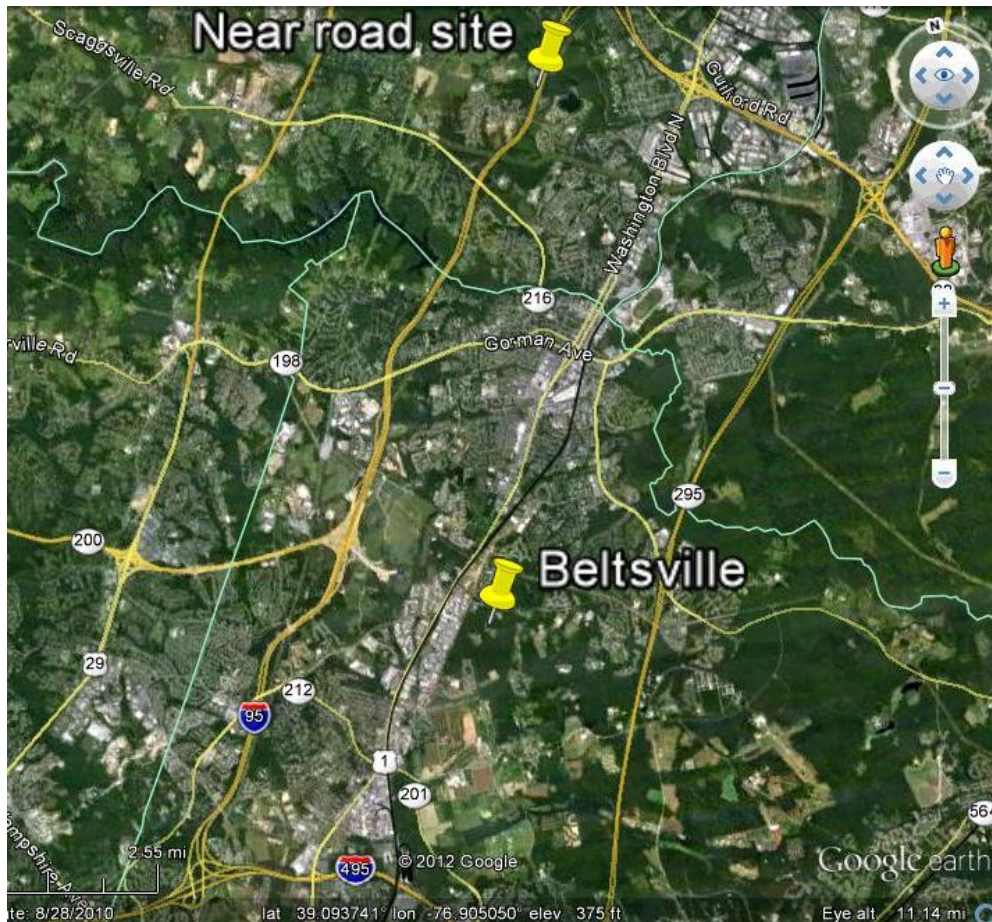


MDE PM_{2.5} Monitors



Near Road NO₂ monitor

- Near road site is along I-95 between DC and Baltimore.
- This site experiences a mix of commuters and truck traffic.
- Background Beltsville site is 6 miles south of near road site.



Instruments at HU-Beltsville and Near Road

Additions to HU-Beltsville are highlighted in red.

- NO₂
- CO
- Met One BAM PM_{2.5}
- **API/teledyne 651 ultrafine particle counter**
- **API/teledyne 633 aethalometer**
- Vaisala WXT 520 weather station (wind speed, wind direction, temperature, pressure, RH, precip)
- Summa canisters for air toxics.

Instruments only at near road site.

- 3-D wind anemometer
- Traffic Counter