

# THE NATIONAL CAPITAL REGIONAL TRAIL NETWORK

---

## Of the TPB's 2018 Long-Range Transportation Plan *Visualize 2045*

Michael Farrell  
Transportation Planner

Transportation Planning Board Technical Committee  
Item 8  
February 7, 2020

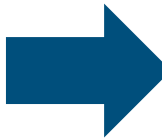


# 2018 Long-Range Plan

**UNFUNDED  
ELEMENT**



**ASPIRATIONAL  
ELEMENT**



**CONSTRAINED  
ELEMENT**



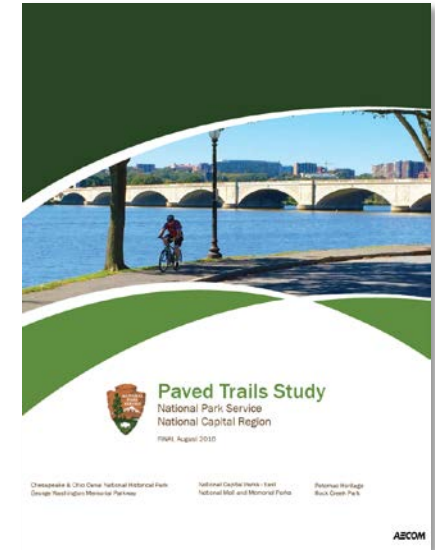
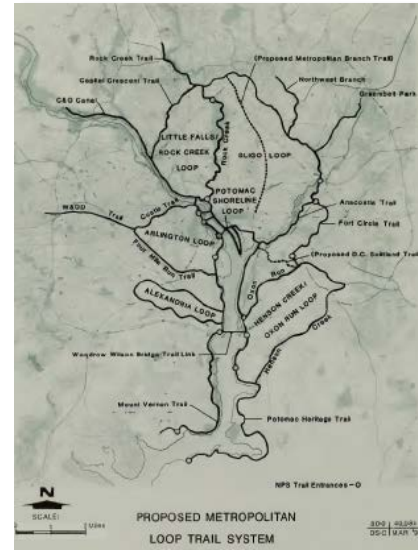
**visualize2045**  
A LONG-RANGE TRANSPORTATION PLAN FOR THE NATIONAL CAPITAL REGION

National Capital Region  
Transportation Planning Board

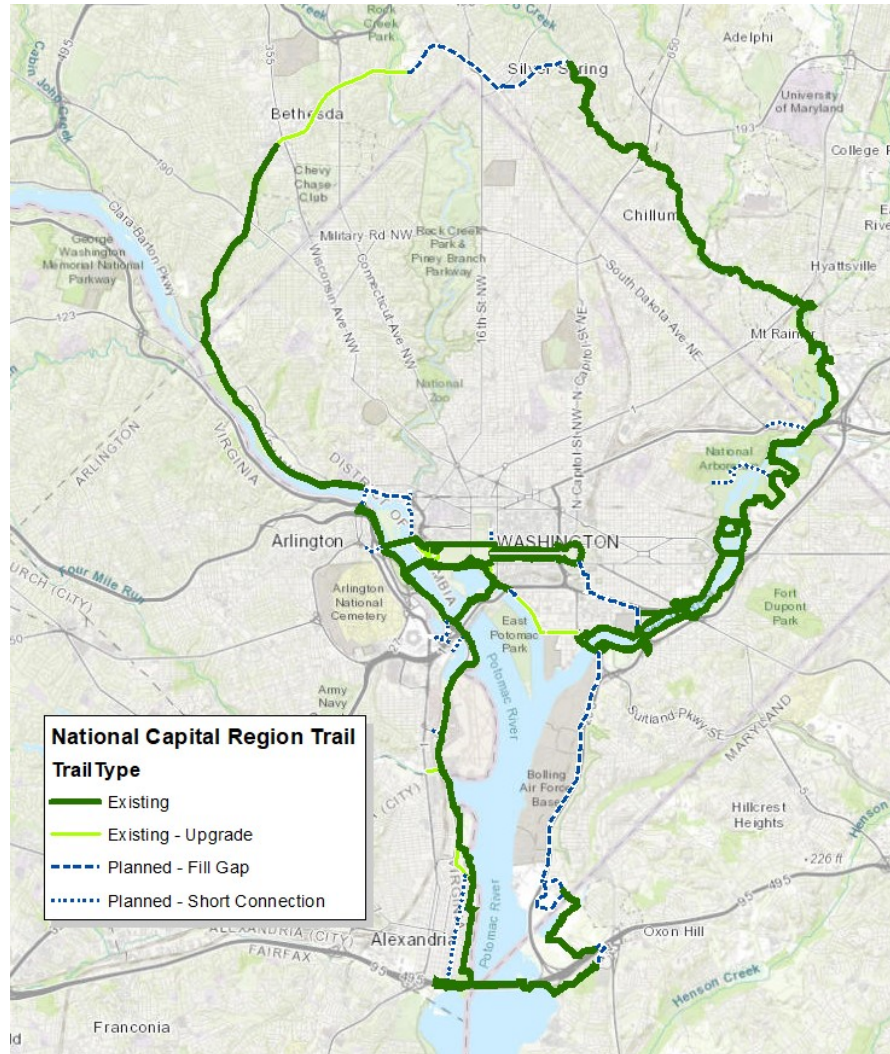
APPROVED  
OCTOBER 17, 2018

# Evolution of an Idea

- 1990: National Park Service *Paved Recreation Trails of the National Capital Region*
- 2014: TPB Bicycle Beltway
- 2016: National Park Service's *Paved Trails Plan*
- 2018: Capital Trails Network (Capital Trails Coalition)
- 2020: National Capital Trail Network (TPB)



# National Capital Trail



- TPB adopted in October 2018 as an Aspirational Element of Visualize 2045
  - 60 total miles total
  - 21 miles unconstructed
  - 3 miles need upgrading



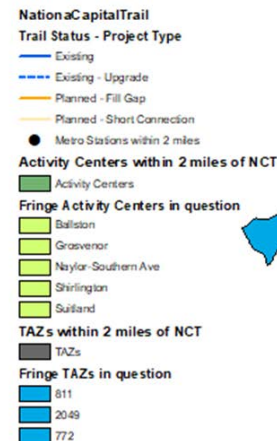


# People and Jobs Served

Within 2 miles of the National Capital Trail:

- 57 Activity Centers
- 58 Metro Stations
- 1,254,000 jobs
- 1,365,260 people

	Activity Centers	Metro Stations	Employment	Population
1/2-mile Buffer	36	26	817983	498161
2-mile Buffer	57	58	1254344	1365260



# 2018: TPB Calls for Expansion

---

- In Fall 2018, TPB Bicycle and Pedestrian Subcommittee recommended that the National Capital Trail be expanded to cover the entire TPB footprint
- Capital Trails Coalition urged the TPB to incorporate its newly adopted Capital Trails Network into Visualize 2045
- In December 2018, TPB adopted Resolution TPB R20-2019, which directed TPB staff to:

“Expand the TPB-endorsed National Capital Trail to provide connectivity to other major trails in the region thereby creating a regional trail network that extends into all TPB member jurisdictions, by building on **previous work done by TPB and others**, and to report on progress by end of June 2019...”

# Review of Activities to Prepare the Map

---

- Coordination/Planning
  - B/P Subcommittee
    - Endorsed Capital Trails Coalition Network – March 19, 2019
    - Endorsed Criteria for Network Inclusion – May 21, 2019
    - Endorsed Expanded National Capital Regional Trail Network – January 21, 2020
  - 2019 Site Visits
    - Capital Trails Coalition – March 8
    - Frederick County/City – April 30
    - Prince William/Manassas/Manassas Park – May 2
    - Loudoun – May 13
    - Charles – Met at COG, June 7



# Review of Activities to Prepare the Map

---

- Data Gathering/Mapping
  - GIS data gathered from all the major jurisdictions
  - Metadata to verify eligibility
    - Width, paved, facility name
    - Vetted for eligibility/density





# Selection Criteria

---

- Long-distance, regional trail network
  - Many local trails will not be included
- Accessible for **“All Ages and Abilities”**
- Off-Street Multi-Use Paths:
  - 10'+ wide for new construction.
  - 8' minimum for existing facilities
  - Narrower in short segments if design constraints
  - Paved, or firm surface such as crushed limestone
- On-street:
  - Protected from moving traffic (i.e. parked cars, curb, flexposts)
  - Short unprotected connections where necessary



# Selection Criteria (Continued)

---

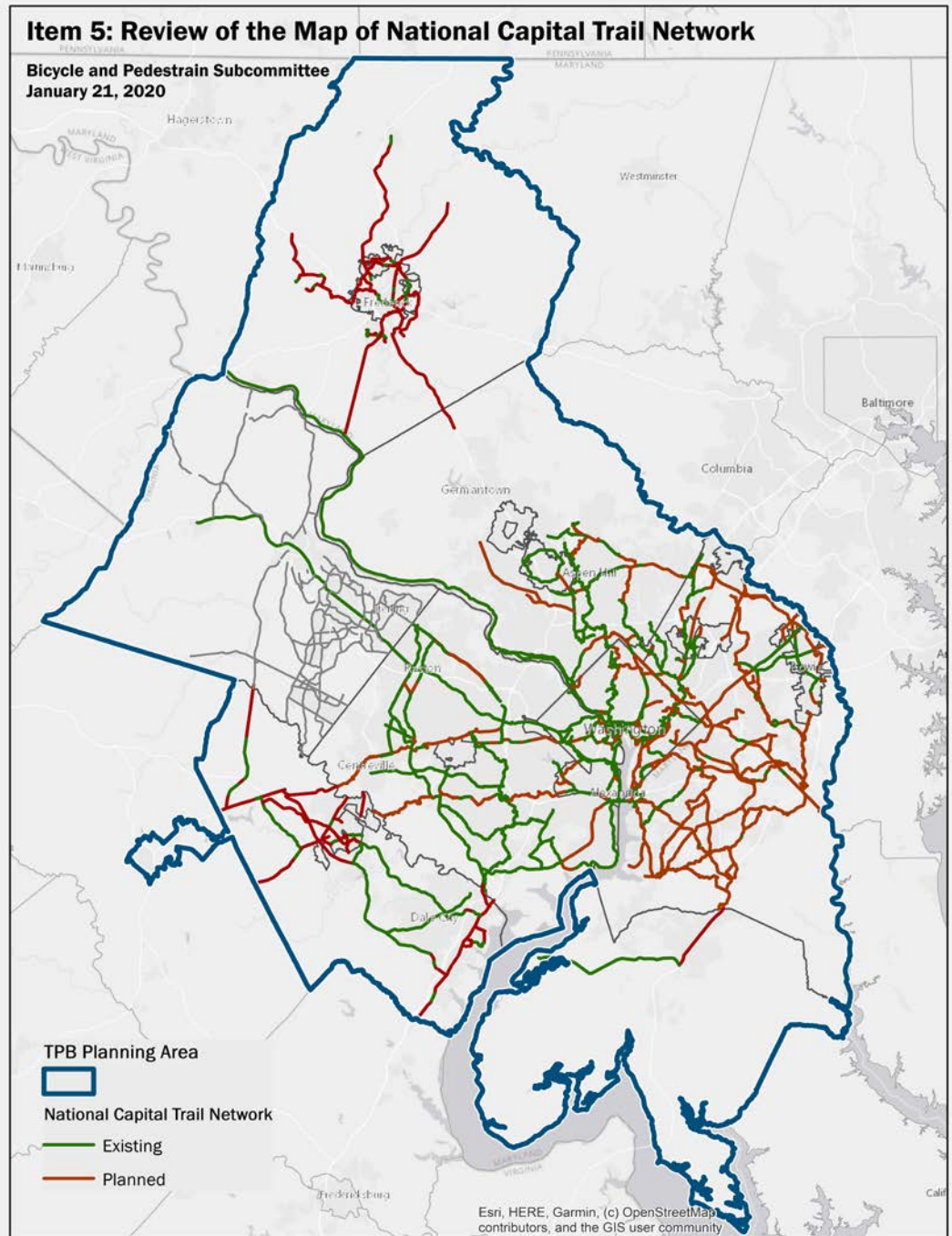
- Designed for non-motorized use
- Connectivity
  - Directly connected to the regional network
  - Suitable for both transportation and recreation
- Existing or Planned Facilities are acceptable
  - Planned facilities must be in an approved plan



# National Capital Regional Trail Network



National Capital Region  
Transportation Planning Board



# Action Requested: Endorse the Expanded Network

---

- Endorse the Network – Today
- TPB Adopts Network - TBD
- Follow-up Efforts:
  - Annual updates of the Network
    - Coordinate with Capital Trails Coalition
  - Update the Regional Bicycle and Pedestrian Plan



## Michael Farrell

Transportation Planner

(202) 962-3760

[mfarrell@mwkog.org](mailto:mfarrell@mwkog.org)

[mwkog.org/tpb](http://mwkog.org/tpb)

---

Metropolitan Washington Council of Governments

777 North Capitol Street NE, Suite 300

Washington, DC 20002



National Capital Region  
Transportation Planning Board