

Washington Region Safety Data

Transportation Safety Subcommittee

October 27, 2014

Overview

- 2013 Crash Data – Fatalities
- FARS Mapping
- MAP-21 Requirements and Timeline

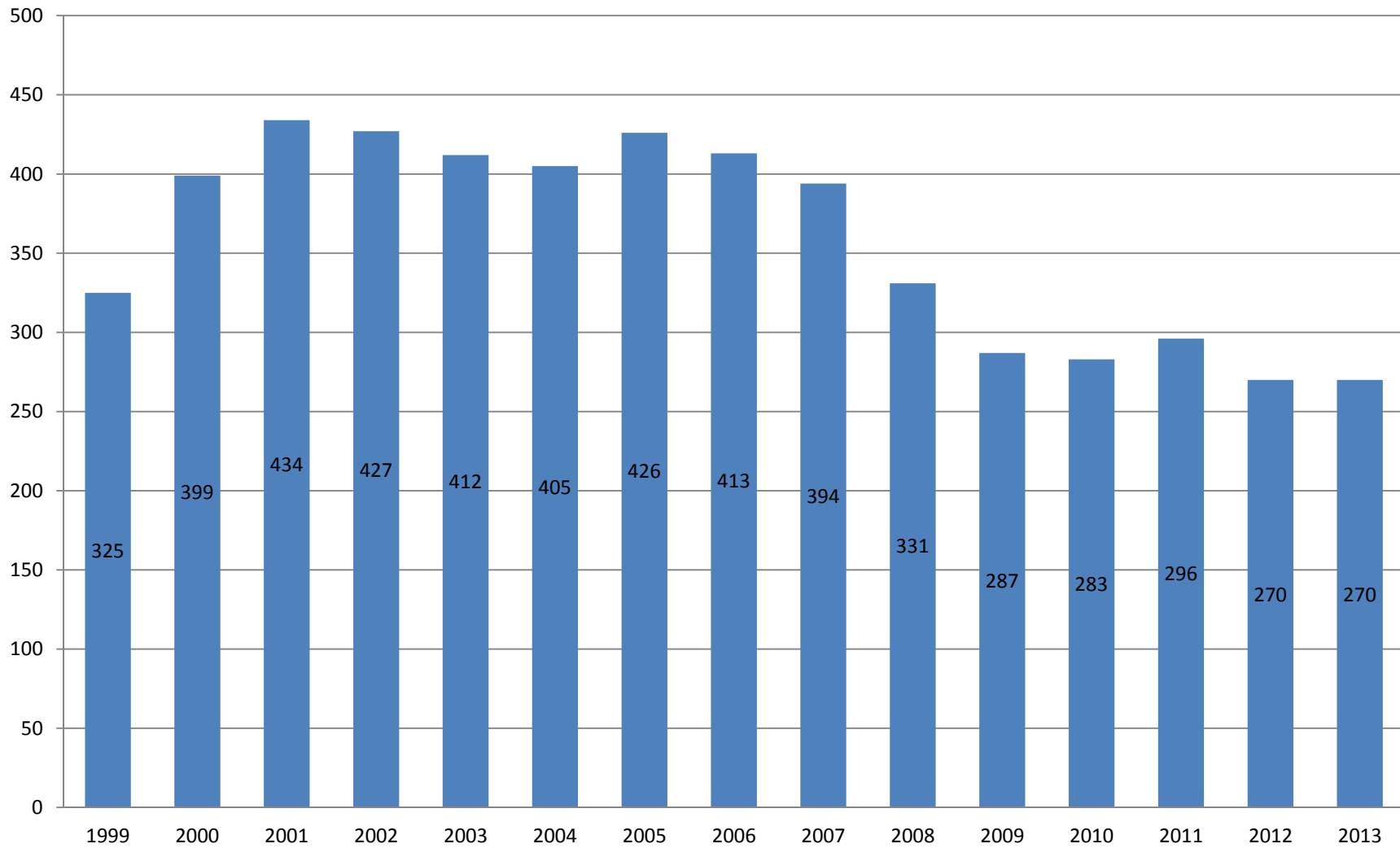
Traffic Fatalities in the Washington Region

Jurisdiction	1999	2000	2001	2002	2003	2004	2005	2006	2007	2008	2009	2010	2011	2012	2013	Total	Average
District of Columbia	41	52	71	50	68	45	49	41	54	39	33	25	32	19	29	648	43
Charles County	26	30	21	27	20	16	40	30	23	14	15	18	22	15	16	333	22
Frederick County	32	27	37	18	18	28	33	33	25	21	23	24	15	16	20	370	25
Montgomery County	49	60	60	67	52	79	44	58	49	52	40	48	40	37	41	776	52
Prince George's County	79	102	128	141	122	121	134	111	126	129	98	87	105	87	87	1657	110
Arlington County	8	14	9	12	9	6	9	3	6	8	5	5	6	4	2	106	7
City of Alexandria	4	5	5	6	3	3	2	1	5	3	1	3	3	4	3	51	3
Fairfax County	49	70	53	64	61	63	61	67	53	29	37	36	44	45	40	772	51
City of Fairfax	0	0	1	1	3	0	2	3	2	0	2	0	2	5	0	21	1
City of Falls Church	0	1	1	1	1	0	0	0	0	0	1	2	0	0	0	7	0
Loudoun County	11	9	15	16	24	22	20	19	21	11	13	12	11	18	13	235	16
City of Manassas	1	2	2	1	1	0	3	1	3	1	3	0	0	1	0	19	1
City of Manassas Park	1	0	0	0	0	0	0	0	0	0	0	0	1	0	0	2	0
Prince William County	24	27	31	23	30	22	29	46	27	24	16	23	15	19	19	375	25
Total Washington	325	399	434	427	412	405	426	413	394	331	287	283	296	270	270	5372	358

Source: DDOT; Virginia DMV; MDSHA Office of Traffic & Safety

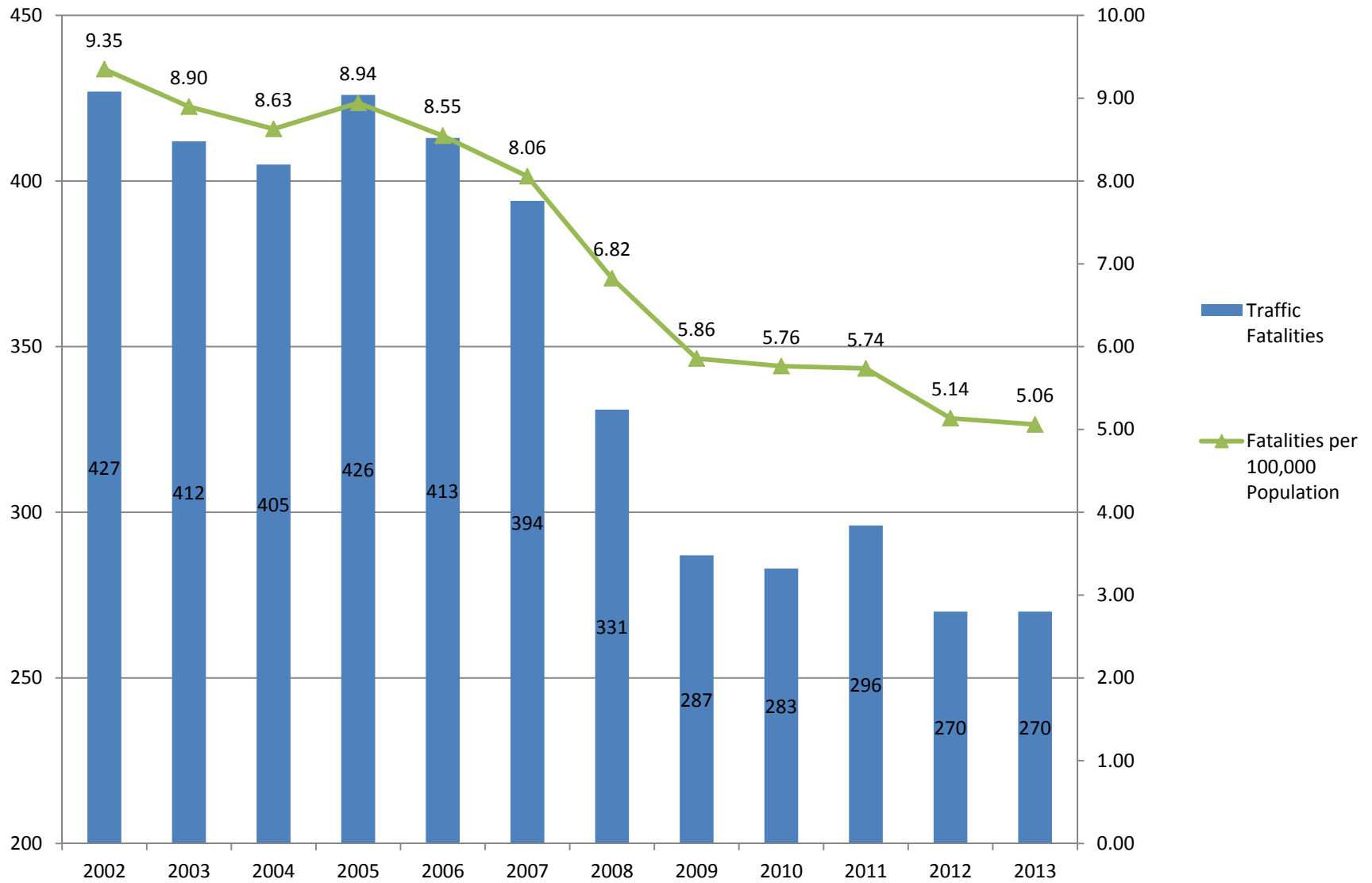
DRAFT 10-27-2014

Total Fatalities



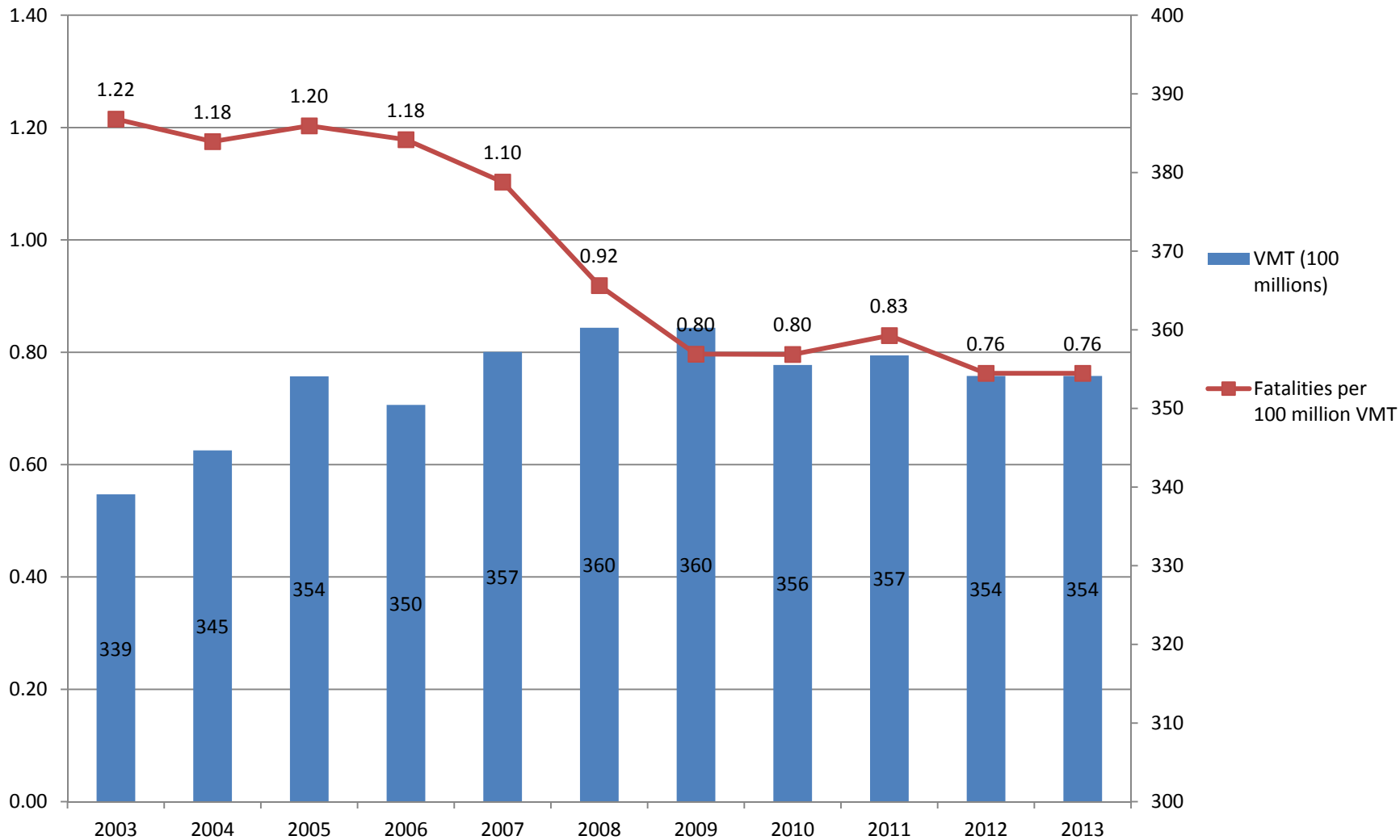
Source: DDOT; Virginia DMV; MDSHA Office of Traffic & Safety

Traffic Fatalities per 100,000 Population in the Washington Region



Source: DDOT; Virginia DMV; MDSHA Office of Traffic & Safety; COG Member Population Estimates

Fatality Rate per 100 Million VMT for the Washington Metropolitan Statistical Area



Source: Bureau of Transportation Statistics; 2009 and 2013 data unavailable

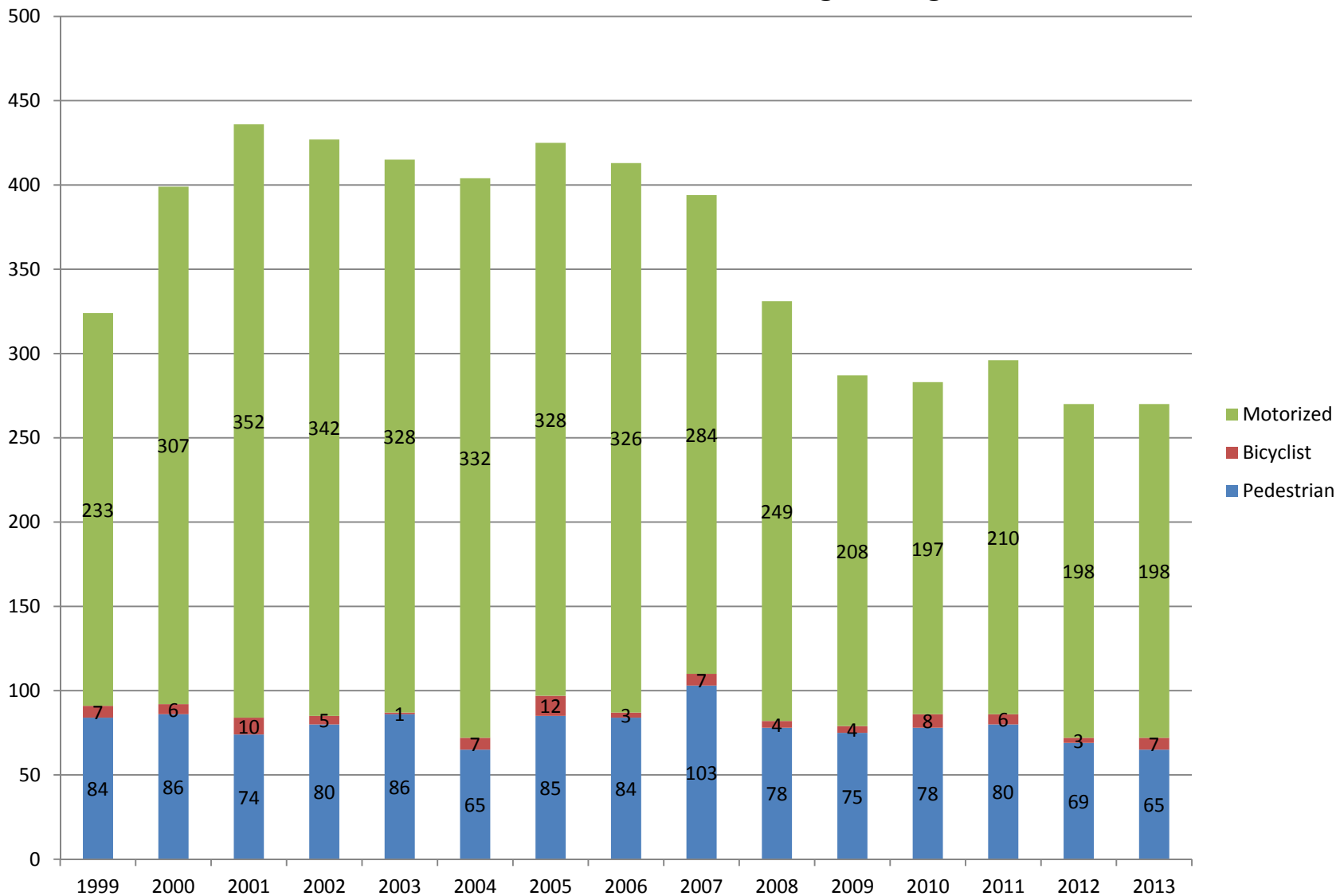
Pedestrian and Bicyclist Fatalities

Jurisdiction	1999	2000	2001	2002	2003	2004	2005	2006	2007	2008	2009	2010	2011	2012	2013	Total	Average
District of Columbia	18	20	15	9	18	14	19	17	27	15	16	16	13	8	14	239	16
Charles County	6	3	2	5	3	1	6	2	6	1	3	3	9	4	3	57	4
Frederick County	6	4	0	2	4	2	2	4	1	0	1	3	0	4	5	38	3
Montgomery County	20	17	11	16	12	15	11	15	17	16	12	15	10	8	14	209	14
Prince George's County	19	16	30	28	30	19	35	19	29	39	23	23	32	24	18	384	26
Arlington County	2	5	4	2	3	2	3	1	1	1	4	1	5	4	1	39	3
City of Alexandria	3	2	2	3	2	1	2	1	2	0	0	2	2	2	2	26	2
Fairfax County	13	20	18	12	7	16	11	20	17	4	11	13	10	7	8	187	12
City of Fairfax	0	0	0	1	1	0	1	0	1	0	2	0	1	1	0	8	1
City of Falls Church	0	1	0	1	0	0	0	0	0	0	0	2	0	0	0	4	0
Loudoun County	1	1	1	3	3	2	3	1	3	0	1	2	3	3	1	28	2
City of Manassas	1	0	0	0	0	0	0	0	1	0	0	0	0	0	0	2	0
City of Manassas Park	0	0	0	0	0	0	0	0	0	0	0	0	0	0	0	0	0
Prince William County	2	3	1	3	4	0	4	7	5	6	6	6	1	7	6	61	4
Total Washington	91	92	84	85	87	72	97	87	110	82	79	86	86	72	72	1,282	85

Source: DDOT; Virginia DMV; MDSHA Office of Traffic & Safety

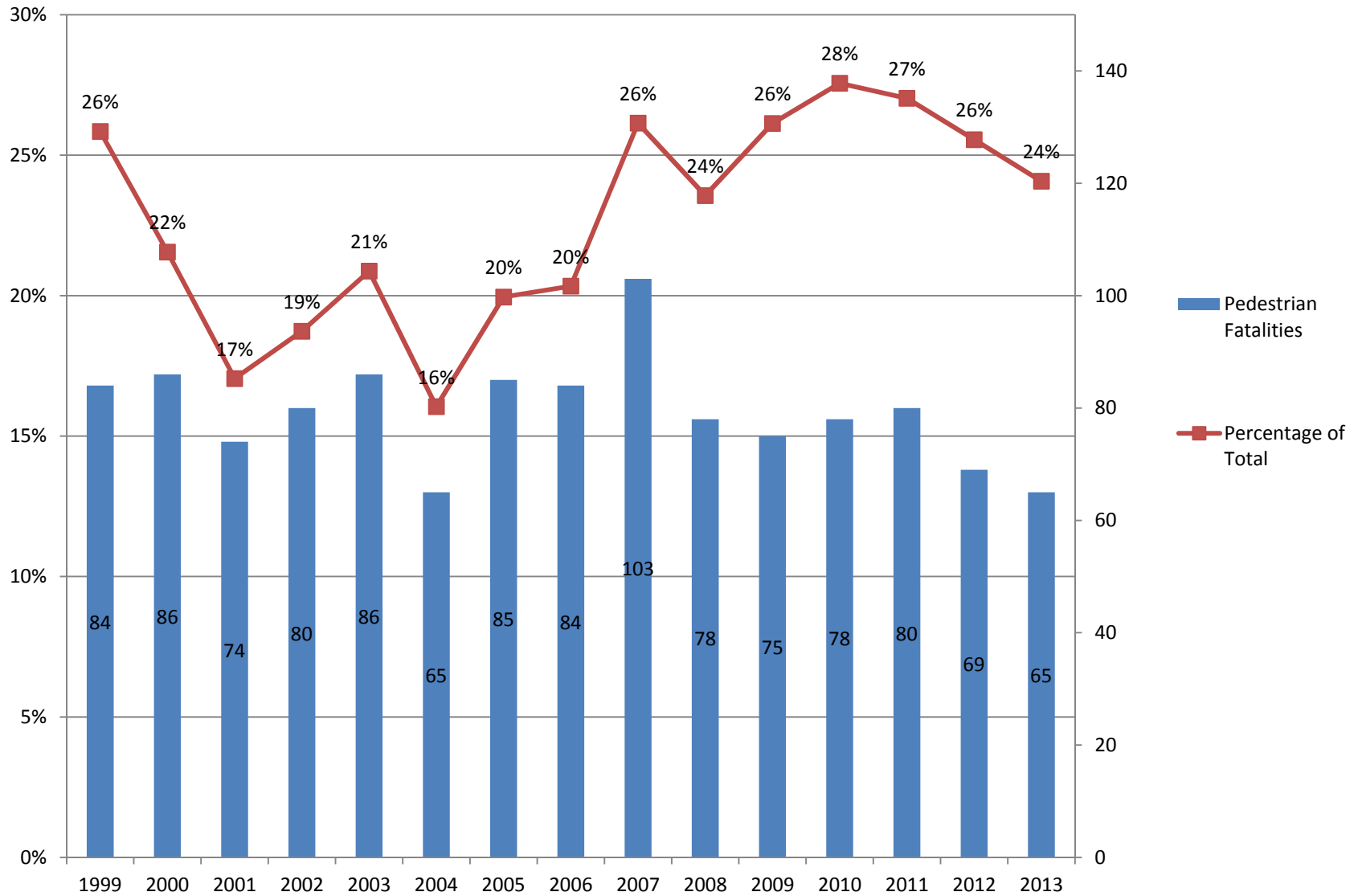
DRAFT 11-19-2013

Traffic Fatalities in the Washington Region



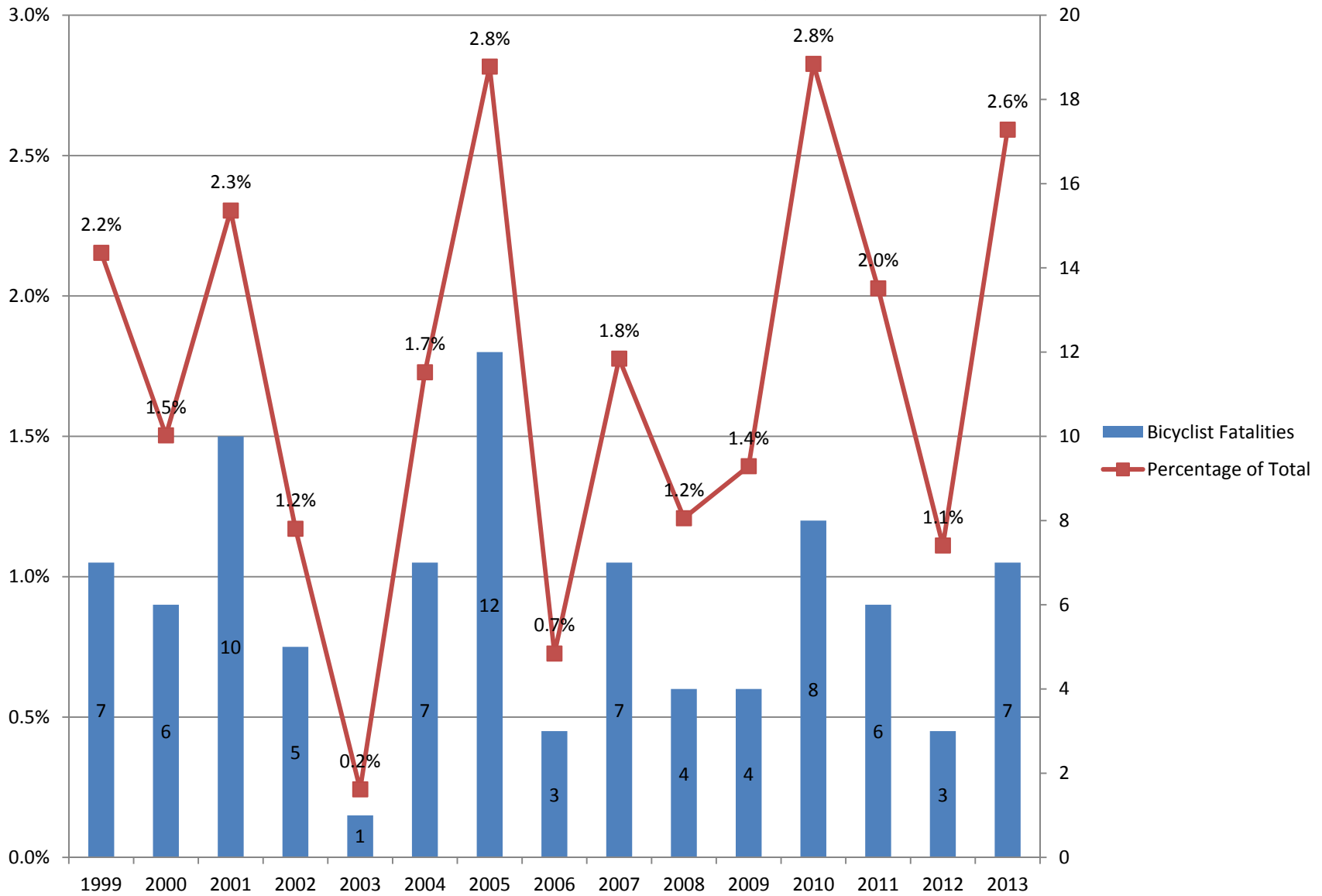
Source: DDOT; Virginia DMV; MDSHA Office of Traffic & Safety

Pedestrian Fatalities in the Washington Region

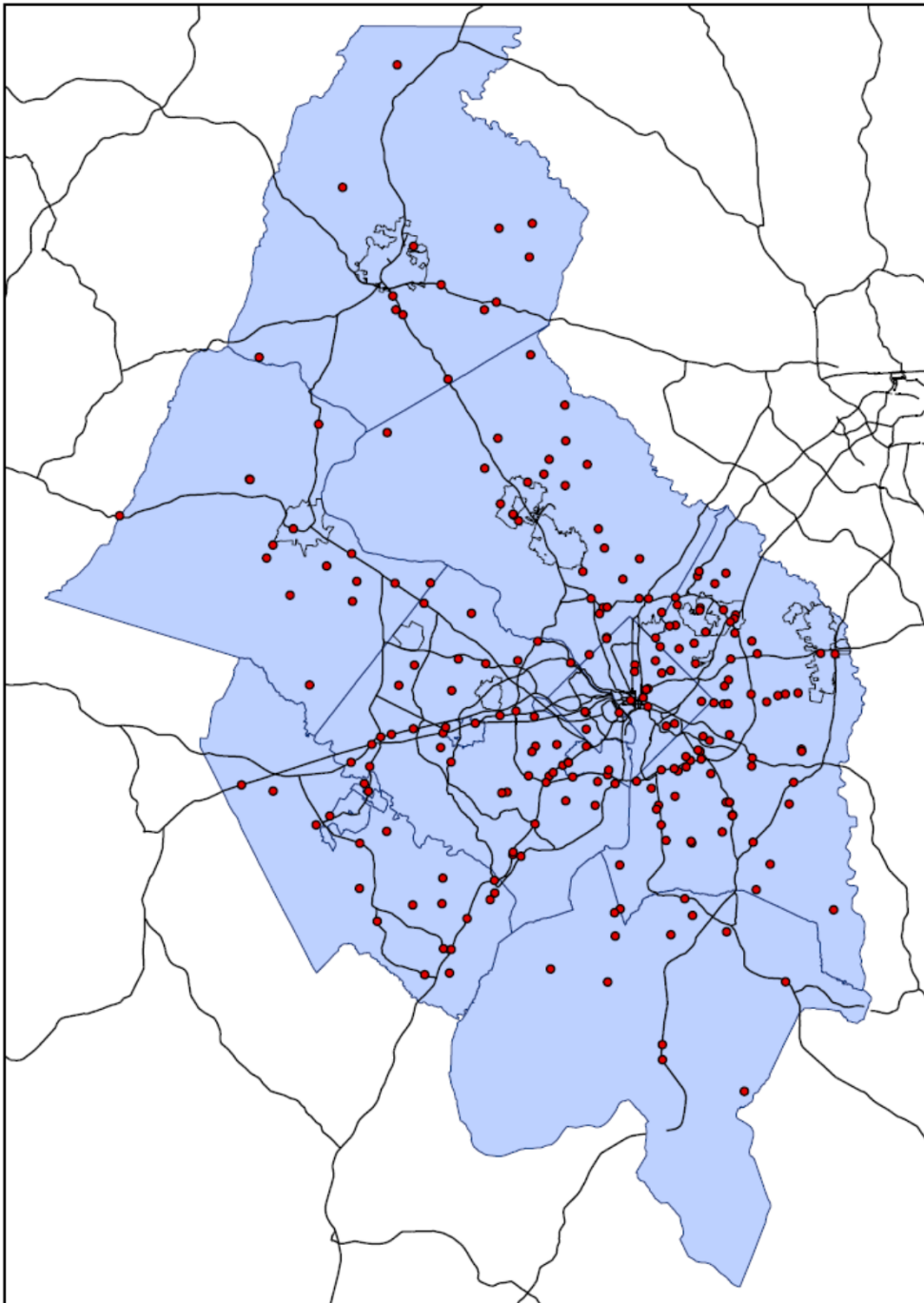


Source: DDOT; Virginia DMV; MDSHA Office of Traffic & Safety

Bicyclist Fatalities in the Washington Region



Source: DDOT; Virginia DMV; MDSHA Office of Traffic & Safety



FARS Mapping

- **Example Map – 2012 Fatalities**
- **Issues**
 - Data Lag – 2 years behind
 - Fatalities Only
 - Discrepancies With State Data
- **Presentation Questions**
 - Years Illustrated
 - Clustering of Points
 - Road Network Shown
 - Scale
- **What Should We Map?**
 - Bike and Ped Fatalities
 - Vehicle Types
 - Impairment
 - Roadway Functional Classification
 - Seatbelt Use
 - Time of Day
 - Weather Conditions
 - Intersection
 - Work Zones
 - Contributing Factors
 - Manner of Collision

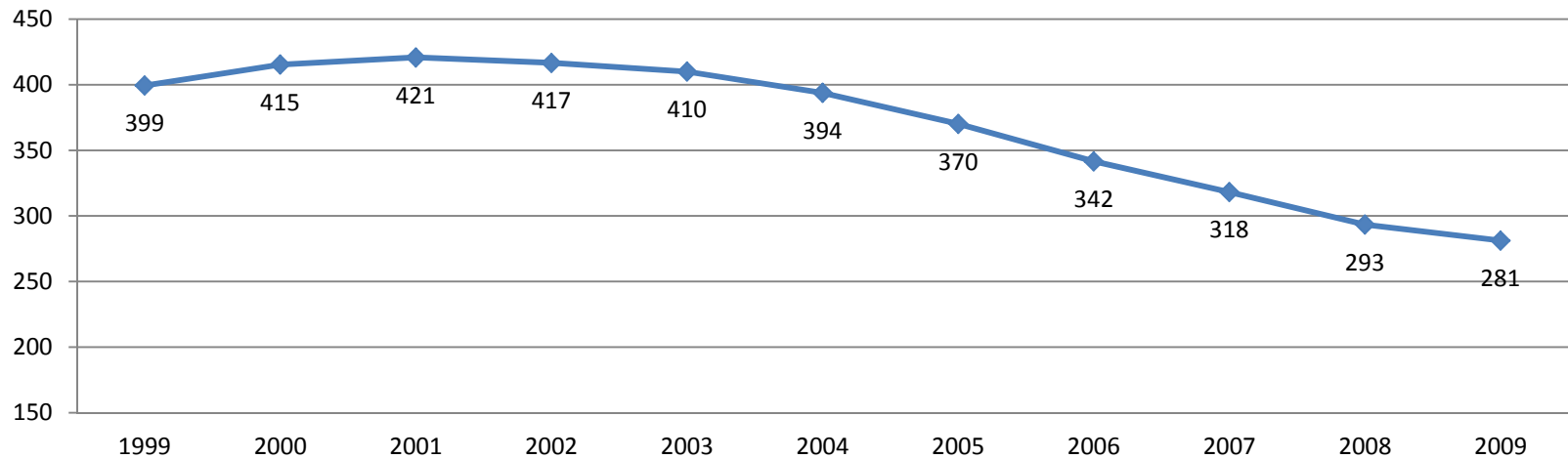
MAP-21 Requirements

- Target Setting
- New Data Requirements
 - Serious Injuries
- Implementation Timeline
 - Spring 2015 – Performance measure rules are finalized and become effective
 - August 31, 2016 – State DOT reports 2017 targets to FHWA in HSIP
 - March 2017 – MPO reports targets to state DOT
 - Early 2020 – Determination of significant progress made

Traffic Fatalities

5-Year Running Average

Jurisdiction	2003	2004	2005	2006	2007	2008	2009	2010	2011	2012	2013	TOTAL
District of Columbia	56	57	57	51	51	46	43	38	37	30	28	466
Charles County	25	23	25	27	26	25	24	20	18	17	17	229
Frederick County	26	26	27	26	27	28	27	25	22	20	20	254
Montgomery County	58	64	60	60	56	56	49	49	46	43	41	542
Prince George's County	114	123	129	126	123	124	120	110	109	101	93	1179
Arlington County	10	10	9	8	7	6	6	5	6	6	4	73
City of Alexandria	5	4	4	3	3	3	2	3	3	3	3	32
Fairfax County	59	62	60	63	61	55	49	44	40	38	40	533
City of Fairfax	1	1	1	2	2	1	2	1	1	2	2	15
City of Falls Church	1	1	1	0	0	0	0	1	1	1	1	5
Loudoun County	15	17	19	20	21	19	17	15	14	13	13	170
City of Manassas	1	1	1	1	2	2	2	2	1	1	1	15
City of Manassas Park	0	0	0	0	0	0	0	0	0	0	0	1
Prince William County	27	27	27	30	31	30	28	27	21	19	18	267
Total Washington Region	399	415	421	417	410	394	370	342	318	293	281	3779



Questions