

FOOD AND AGRICULTURE IN GREATER WASHINGTON

What Our Region Grows Updates and Farmer Panel

Chris Van Vlack
Loudoun Soil and Water Conservation District
FARM Member

FARM Ad Hoc Committee
April 9, 2021

Regional Agricultural Trends (prior to COVID-19)

- On-going decline in number of farms, land in farms
- Growth in small acreage farms
- *Overall* trend of lower production levels and dairy is in crisis
- As region's population grows, harder to rely on region for food consumed by residents
- Grain and forage dominate production
- Continued growth: direct sales of farm products, urban agriculture, on-farm craft beverage, agritourism



Cultivate the City at Nationals Park 2017
(Niraj Ray/ Cultivate the City)

Regional Agricultural Trends (prior to COVID-19)

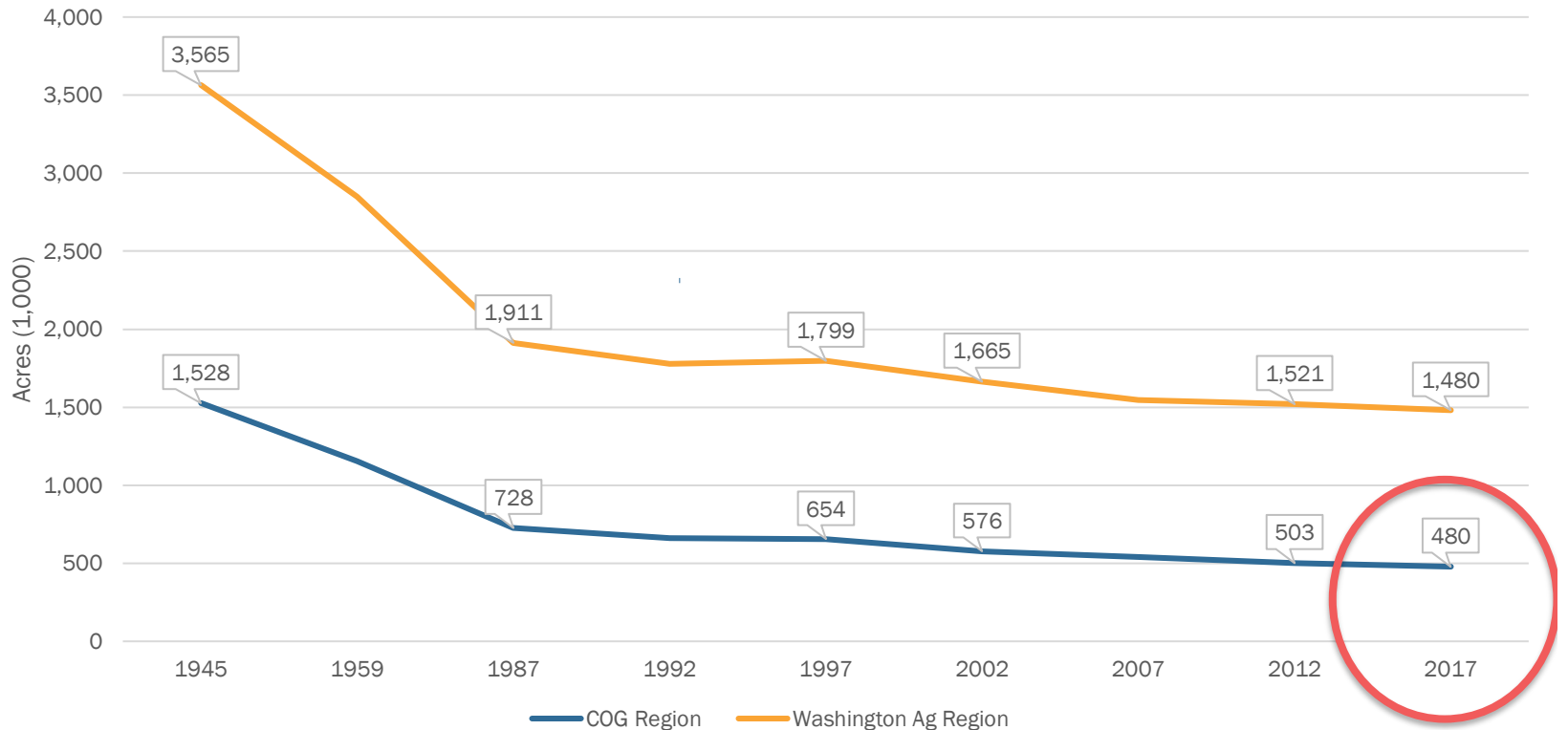
- Farming is a difficult business
 - Majority of region's farmers farm part time
- Lack of racial and ethnic diversity in farm population
- Increasing interest in healthy soils for water quality and carbon sequestration
- Need for appropriately scaled infrastructure for processing and aggregation (i.e. meat, produce, grains, etc.)



Montgomery County Ag History Farm Park,
Derwood, MD. (Lindsay Smith/COG)

Rapid Farmland Declines Post WWII

Acres of Land in Farm in Washington Ag and COG Regions, 1945 to 2017



Ag Contributions and Challenges

Range of tools, programs can be applied to protect farmland and finite, high quality soils

Agriculture has significant economic impacts in Metropolitan Washington

COVID-19 impacts vary significantly by sector

- New appreciation for local
- New partnerships across supply chain
- Existing constraints on local meat processing capacity exacerbated
- Georgetown and UMD *Urban Agriculture Pivot Study* in DC, Arlington and Prince George's counties



Farmer Hiu Newcomb shows Regional Ag Work Group members Potomac Vegetable Farms in 2019 in Loudoun County. (Lindsay Smith/COG)

Farmer Panel

Hiu Newcomb, Co-founder of Potomac Vegetable Farms

(Founding member of COG's Regional Ag Work Group, former Board Member of Future Harvest)

Stephen Bradford, Third generation farmer at Potomac Vegetable Farms

(Co-founder of Root to Rise at PVF, Loudoun Farm Bureau Board Member)

Amanda Cather, Co-Owner of Plow and Stars Farm

(Montgomery County Agricultural Advisory Committee Member and Million Acre Challenge Project Director)

Gale Livingstone, Owner of Deep Roots Farm

(Prince George's Food Security Task Force Member)

More Information

Lindsay Smith
(202) 962-3307
lsmith@mwcog.org

Brian LeCouteur
(202) 962-3393
blecouteur@mwcog.org

mwcog.org

777 North Capitol Street NE, Suite 300
Washington, DC 20002



We work with the people who work the land.

Chris Van Vlack
Loudoun Soil and Water Conservation District
571-918-4530 ext. 107.
chris.vanvlack@lswcd.org



Metropolitan Washington
Council of Governments