

# Visualize 2045

## Technical Input Solicitation: for LRTP 2022 Update, TIP and the Air Quality Conformity Analysis

Stacy Cook  
Transportation Planner

Transportation Planning Board  
November 18, 2020

Agenda Item # 11

**visualize**  
**2045** A long-range  
transportation plan  
for the National  
Capital Region

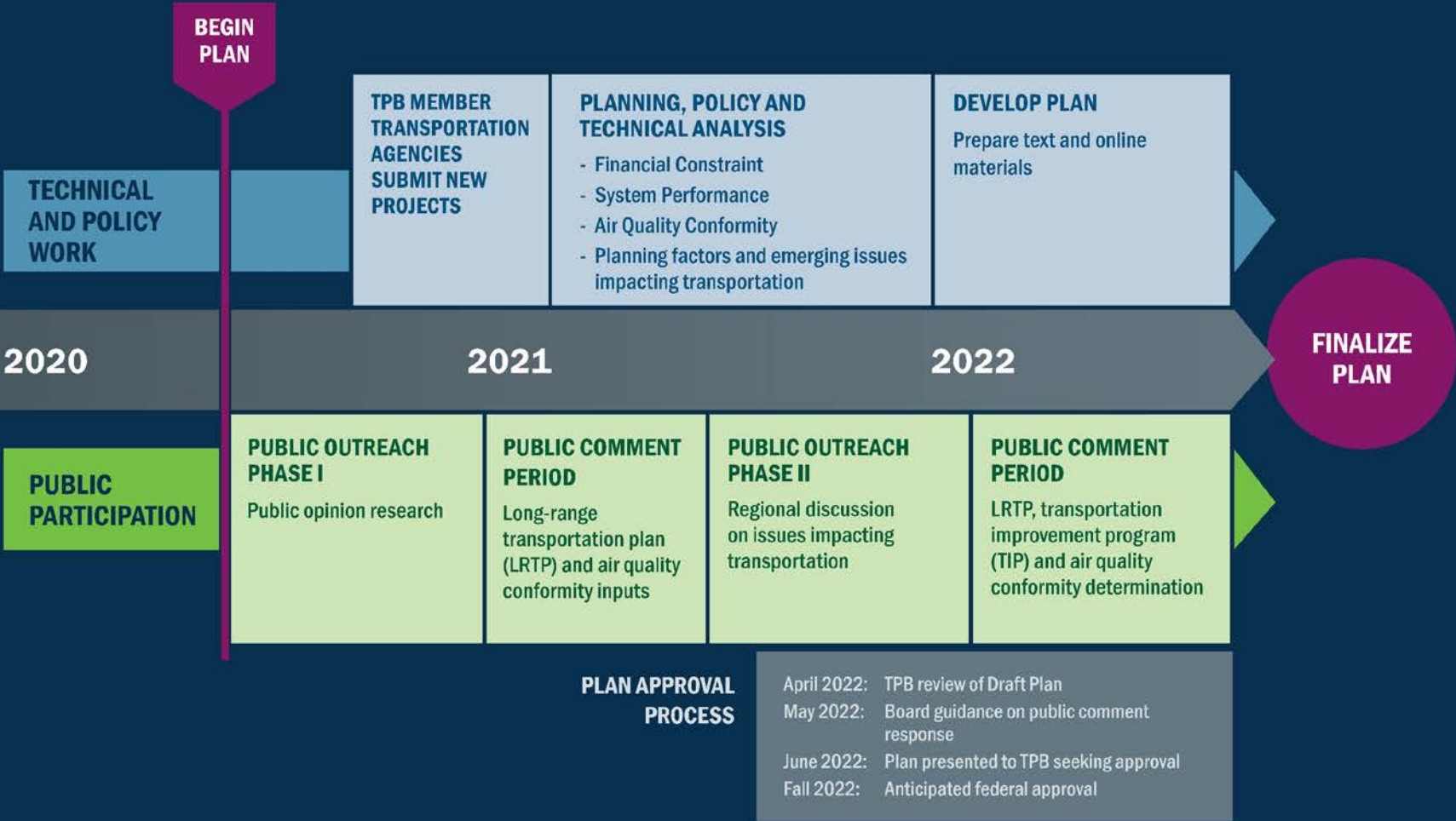


(Flickr/BeyondDC)

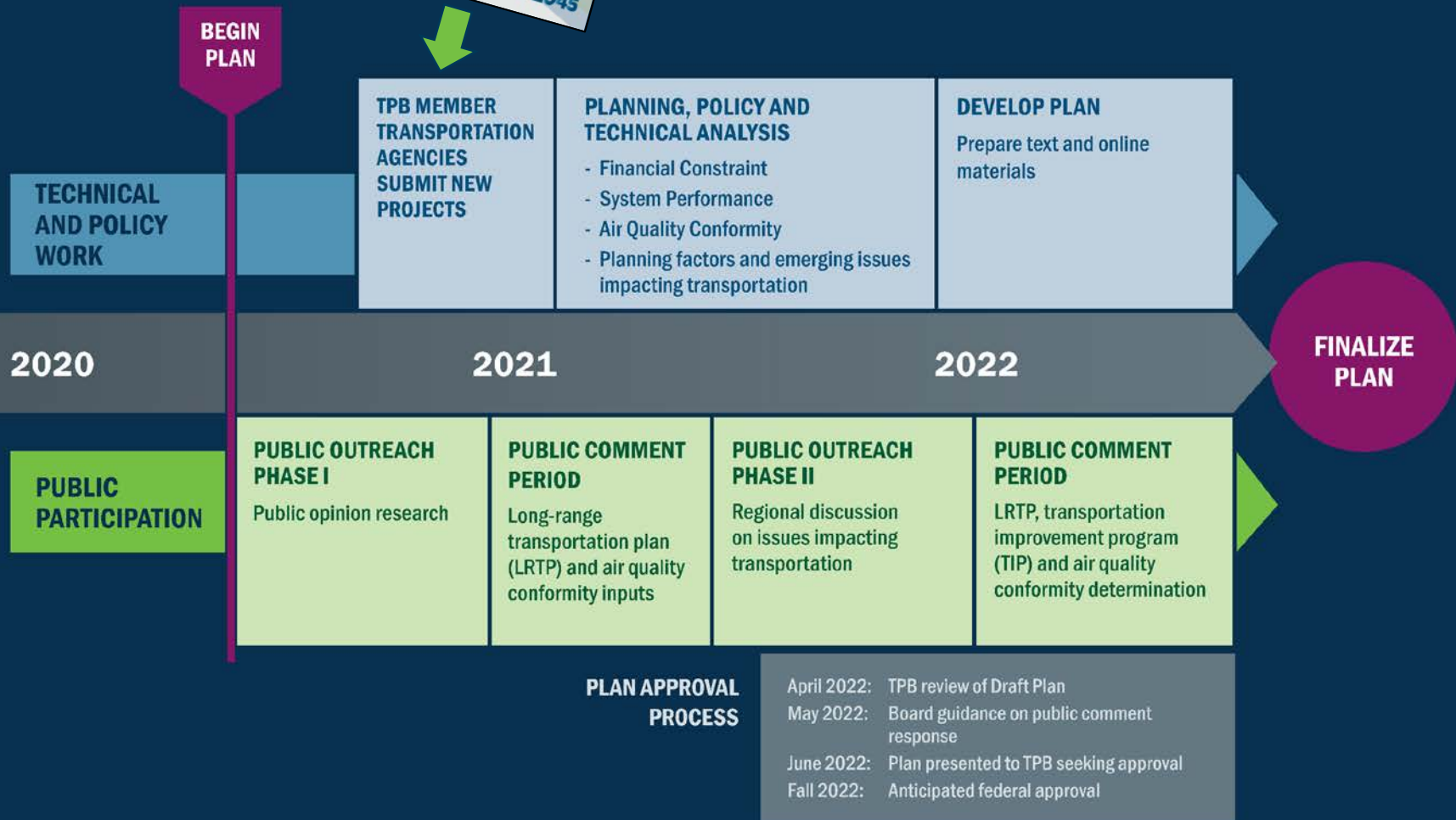
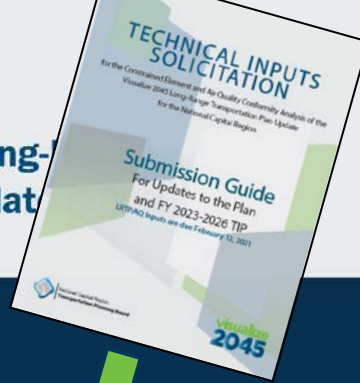
# Agenda

- 1. Purpose of the Technical Input Solicitation**
- 2. Contents and Updates**
- 3. Regional Policy Questions**
- 4. Board Role**
- 5. Q & A**

TPB's Visualize 2045 Long-Range  
Transportation Plan Update (2022)

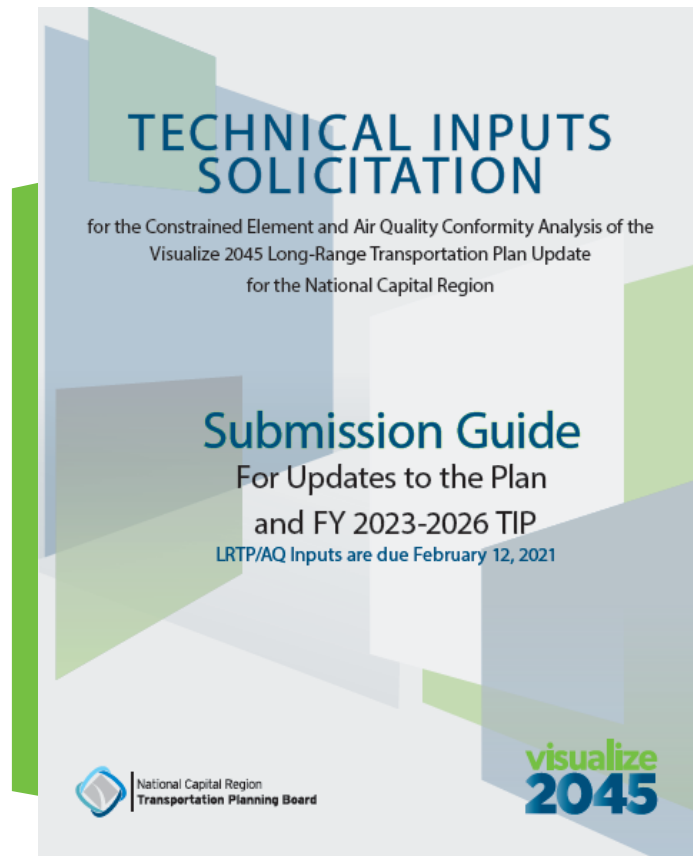


## TPB's Visualize 2045 Long-Range Transportation Plan Update



# Purpose of Technical Input Solicitation

- Provide transparency in process
- Link TPB priorities and federal requirements to projects, programs, and policies submitted by member agencies



# Why does this document matter?

Local and regional needs



Federal requirements



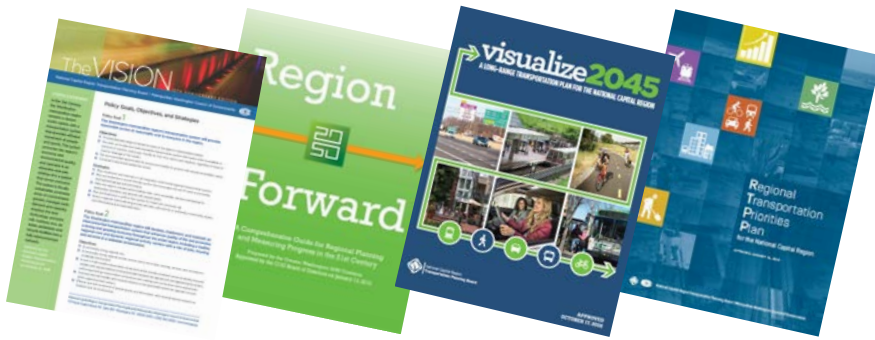
TPB priorities



Inputs to the LRTP  
and Air Quality  
Conformity Analysis



The future of  
our regional  
transportation  
system



# The Plan: where a regional vision and local actions come together



# Contents and Updates

- Introduction
  - Requirements
  - Project Inputs
  - Plan and TIP Update Schedule
  - Responsible Agencies
  - Federal and Regional Policies
    - Seven Transportation Initiatives for a Better Future
    - Shared Regional Goals and Priorities
    - Federal Requirements and Policy Considerations
    - Performance-Based Planning and Programming
  - Basic Submission Instructions for Conformity Inputs
  - Amendments to the Plan and TIP
  - Resources and Maps
- Technical instructions
- TPB Priorities
- Technical instructions
-



# A Focus on TPB priorities

- Members that submit projects must answer questions about if and how projects address:
  - TPB Policy Framework and the Regional Transportation Priorities Plan Goals
    - A new emphasis on:
      - Aspirational Initiatives
      - Safety
      - Equity
      - Climate Change mitigation targets
- The MPO uses project information to communicate about what is in the Plan



Project InfoTrak: new TPB online database that members will use to submit project information.

# Questions: RTPP Goals

New equity questions



Goal	Questions
Provide a Comprehensive Range of Travel Options	<ul style="list-style-type: none"> <li>Identify all travel mode options that this project provides, enhances, supports or promotes</li> <li>Is this project physically in an Equity Emphasis Area (EEA)? How does it improve equity?</li> <li>Does this project improve accessibility for historically transportation-disadvantaged individuals (i.e., persons with disabilities, low incomes, and/or limited English proficiency)?</li> </ul>
Promote Regional Activity Centers	<ul style="list-style-type: none"> <li>Does this project begin or end in an Activity Center?</li> <li>Does this project connect two or more Activity Centers?</li> <li>Does this project promote non-auto travel within one or more Activity Centers?</li> <li>Does this project connect an Equity Emphasis Area to an Activity Center?</li> </ul>
Ensure System Maintenance, Preservation, and Safety	<ul style="list-style-type: none"> <li>Does this project contribute to enhanced system maintenance, preservation?</li> </ul>
Maximize Operational Effectiveness and Safety	<ul style="list-style-type: none"> <li>Is this project primarily designed to reduce travel time on highways and/or transit without building new capacity (e.g., ITS, bus priority treatments, etc.)?</li> <li>Is this project expected to significantly reduce fatalities or injuries among motorists, transit users, pedestrians, and/or bicyclists?</li> </ul>
Protect and Enhance the Natural Environment	<ul style="list-style-type: none"> <li>Is this project expected to contribute to reductions in emissions of criteria pollutants, specifically, to attainment of ozone levels consistent with the National Ambient Air Quality Standard (NAAQS)?</li> <li>Is this project expected to contribute to meeting the regional goal of reducing greenhouse gasses by 50% below 2005 levels by 2030?</li> </ul>
Support Interregional and International Travel and Commerce	<ul style="list-style-type: none"> <li>Does this project enhance, support, or promote the following freight carrier modes: long-haul truck, local delivery, rail, or air freight carrier modes?</li> <li>Does this project enhance, support, or promote the following passenger carrier modes: air, Amtrak intercity passenger rail, intercity bus?</li> </ul>



Updated safety question



Updated climate questions



# Updated Question: emphasizes the Aspirational Initiatives

Please provide additional written information that describes how this project further supports or advances the TPB Aspirational Initiatives, other regional goals, or needs.

- The aspirational initiatives are:
  - Bring Jobs and Housing Closer Together.
  - Expand Bus Rapid Transit and Transitways Regionwide.
  - Move More People on Metrorail.
  - Provide More Telecommuting and Other Options for Commuting.
  - Expand Express Highway Network.
  - Improve Walk and Bike Access to Transit.
  - Complete the National Capital Trail Network.

# Updated Question: Safety

## Responding to: TPB 2020 Safety Resolution

---

Goal: Ensure System Maintenance, Preservation, and Safety

Goal: Maximize Operational Effectiveness and Safety

- Is this project **expected to significantly reduce fatalities or injuries** among motorists, transit users, pedestrians, and/or bicyclists?

# New Questions: Equity

## Responding to: TPB July 2020 Equity Resolution

---

### Goal: Provide a Comprehensive Range of Travel Options

- Is this project physically in an Equity Emphasis Area (EEA)? How does it improve equity?

### Goal: Promote Regional Activity Centers

- Does this project connect an Equity Emphasis Area to an Activity Center?

# Updated Questions: Climate Change Mitigation

Responding to: COG Regional 2030 Climate and Energy Action Plan, TPB Oct 2020 Resolution

---

Goal: Protect and Enhance the Natural Environment

- Is this project expected to contribute to reductions in emissions of criteria pollutants, specifically, to attainment of ozone levels consistent with the National Ambient Air Quality Standard (NAAQS)?
- Is this project expected to contribute to meeting the regional goal of reducing greenhouse gasses by 50% below 2005 levels by 2030

# TPB Members' role:

- **December 2020:** Board will be asked to approve the Technical Input Solicitation
- **Ongoing:** Continue to encourage plans, programs and policies that implement the Aspirational Initiatives and other regional policy priorities



Flickr/BeyondDC

## Stacy M. Cook

Principal Planner

(202) 962-3335

scook@mwkog.org

[mwkog.org/TPB](http://mwkog.org/TPB)

Metropolitan Washington  
Council of Governments

777 North Capitol Street NE,  
Suite 300

Washington, DC 20002