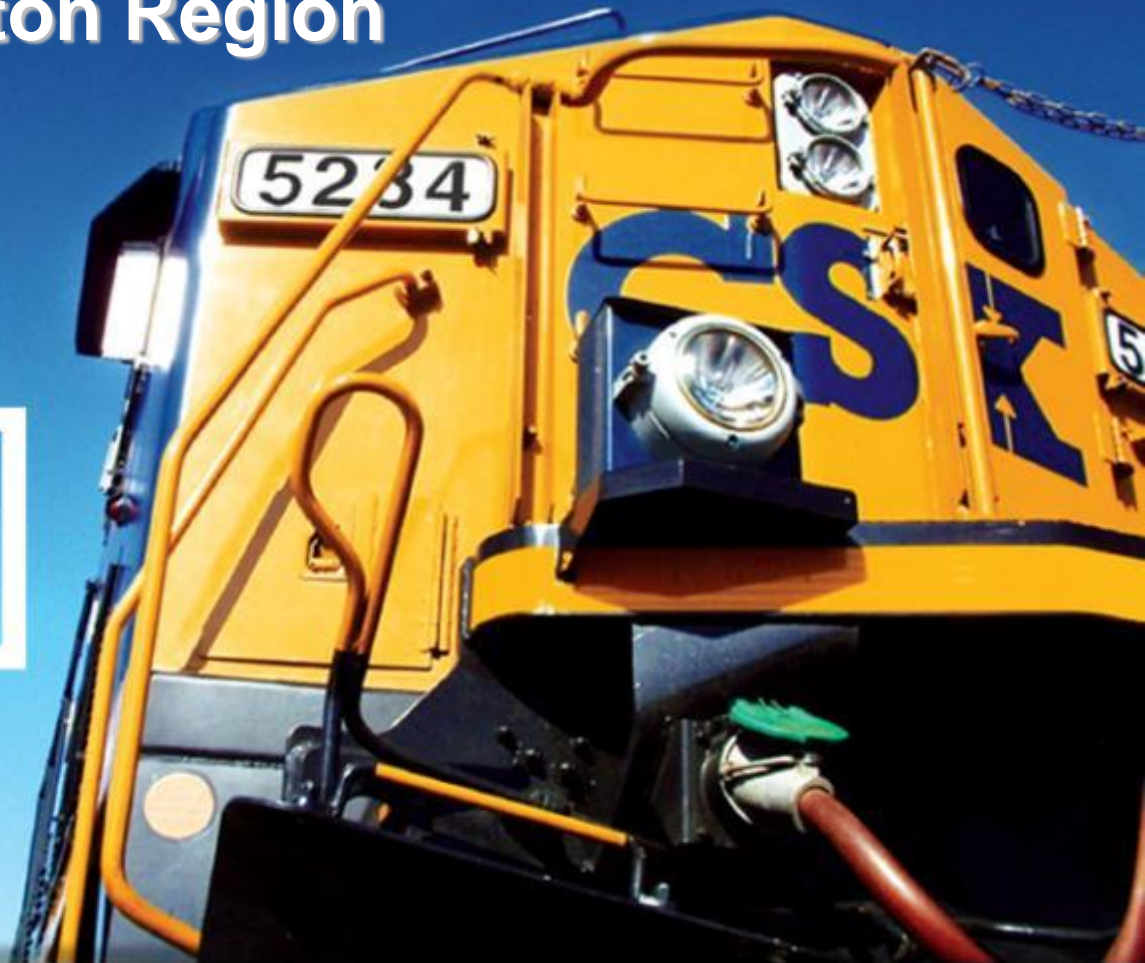


CSX Infrastructure Investments in Metro Washington Region

IT STARTS
WITH
THE CUSTOMER



How tomorrow moves [**CSX**]
.. ..™

Annual Freight Demand per American

2010 = 40 Tons per person
2015 = 54 Tons per person

According to FHWA's most recent Freight Analysis Framework, the nation's entire shipping ecosystem moves more than 17 billion tons of freight per year across all modes of transportation. For a population of more than 314 million people, that is roughly 54 tons of freight moved per year for every American.

Railroads play an integral role in moving freight across the country. The scale of railroads and the cost advantages enables large companies to operate and ultimately enable lower prices and better choice for consumers.



CSX Network

- 23 States, District of Columbia and two Canadian Provinces
- 29,000 employees
- 21,000 route miles
- More than two-thirds of Americans live within CSX's service territory
- Serves 70 ocean, lake and river ports



National Gateway Project



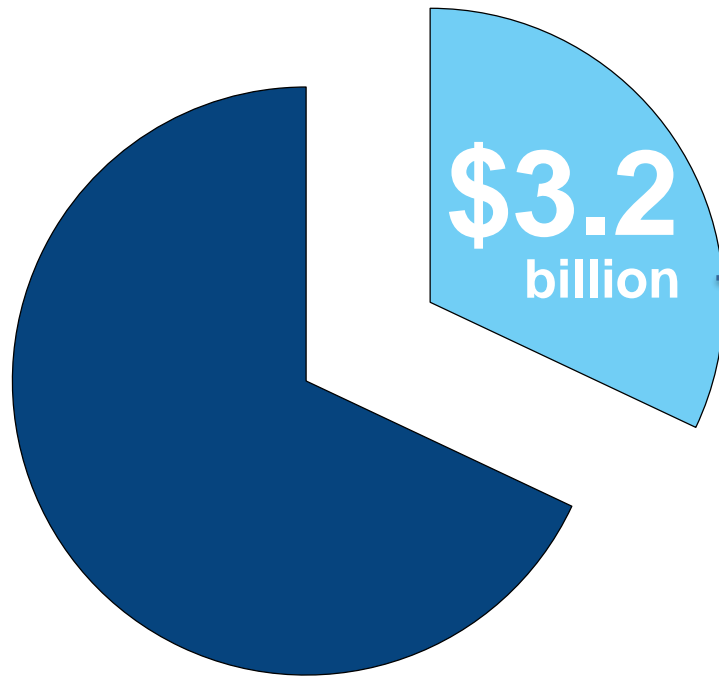
Overview

- Public-private partnership to expand double-stack cleared routes between East Coast ports and internal markets
- \$850M in investments with more than \$10B worth of public benefits
- Supported by all six Governors, DC, and broad coalition of business, environmental and other groups
- Involves 61 clearance projects and 6 intermodal terminals

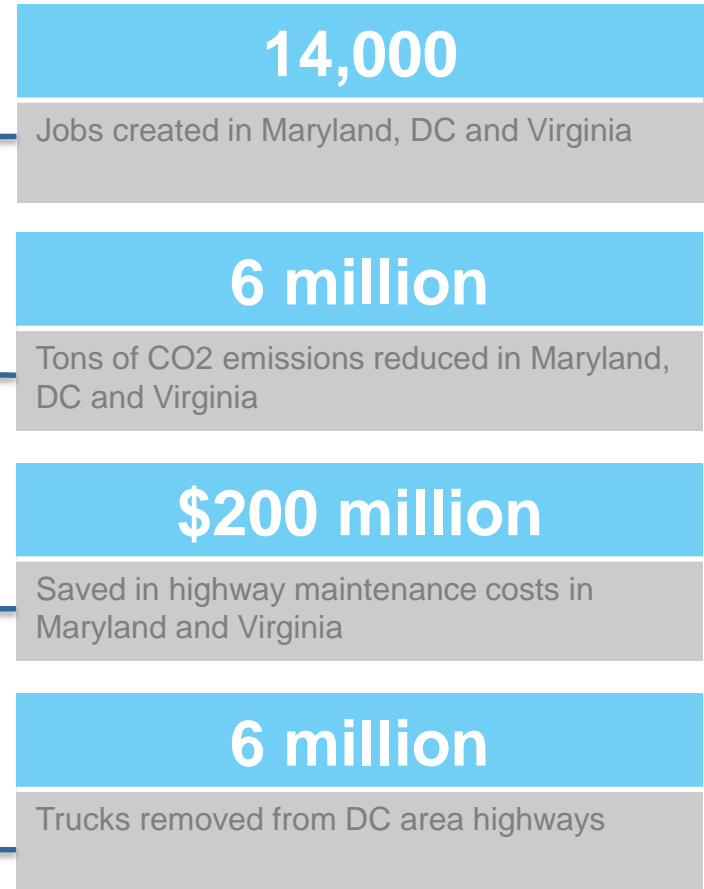


National Gateway: Benefits to Washington Region

\$10 Billion
Total public benefit from National Gateway over 30 years



Total public benefit for the Washington, DC Metro area



Figures according to 2009 TIGER grant application and tax/wage information.



National Gateway Phase I

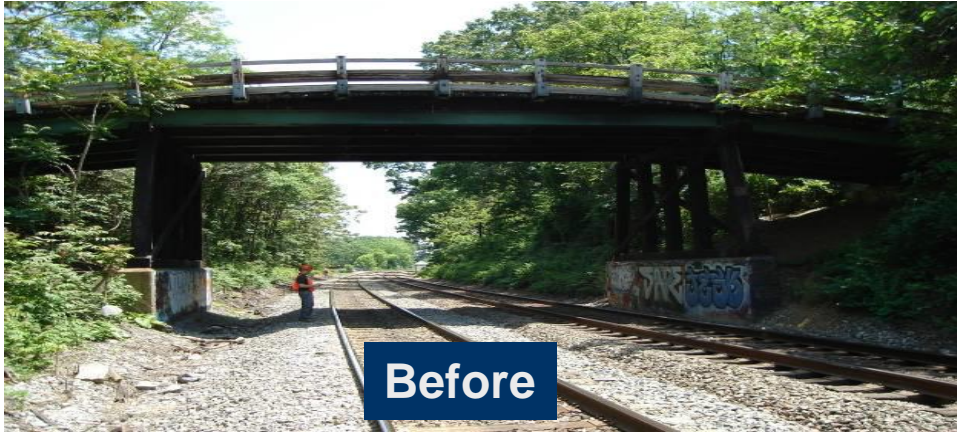
Phase I Completed October 8, 2013

- 40 Clearance Projects, 4 intermodal terminals (NW Ohio; Columbus, OH; Chambersburg, PA; Charlotte, NC)
- NW Ohio Terminal \$50M expansion completed in 2015



National Gateway Phase II

Deer Park Drive Bridge – Washington Grove, MD



- Total Projects: 21
- Clearance Achieved: 14
- Projects Remaining: 7
- Projects in Construction: 6 (tunnel and 5 track lowerings)
- Projects in Design/Permitting: 1 (raise bridge)
- MW COG region: 13 projects (6 remaining)
- Expect to be double stack cleared by end of 2016, and Virginia Avenue Tunnel and area restoration completed in 2018.



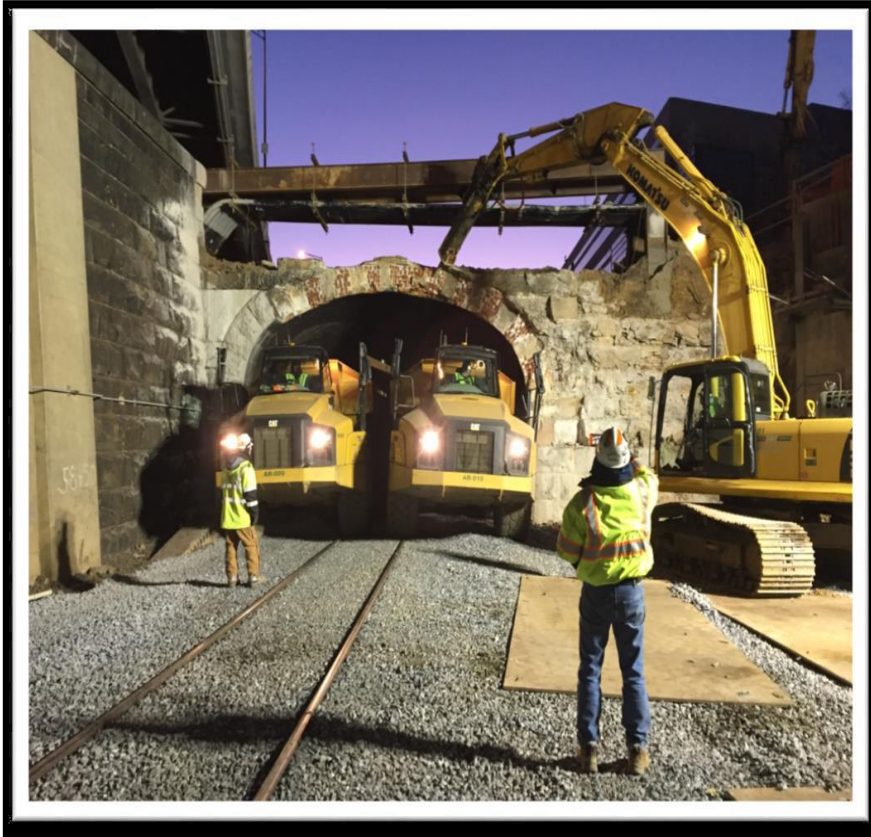
National Gateway Phase II: Virginia Avenue Tunnel

- 111+ year-old single-track, single-stacked tunnel under Virginia Avenue
- Approximately 4,000 feet long masonry tunnel (9 city blocks)
- Bottleneck to network through Washington as double tracked on both ends
- Ever-increasing maintenance requirements as structure ages
- Multiyear NEPA process identified preferred alternative



National Gateway Phase II: Virginia Avenue Tunnel

Virginia Avenue, 2nd Street Portal



Tunnel Demo started January 18th
(looking east)



February 12th Progress Photo
(looking east)



National Gateway Phase II: Virginia Avenue Tunnel

Virginia Avenue, 4th Street

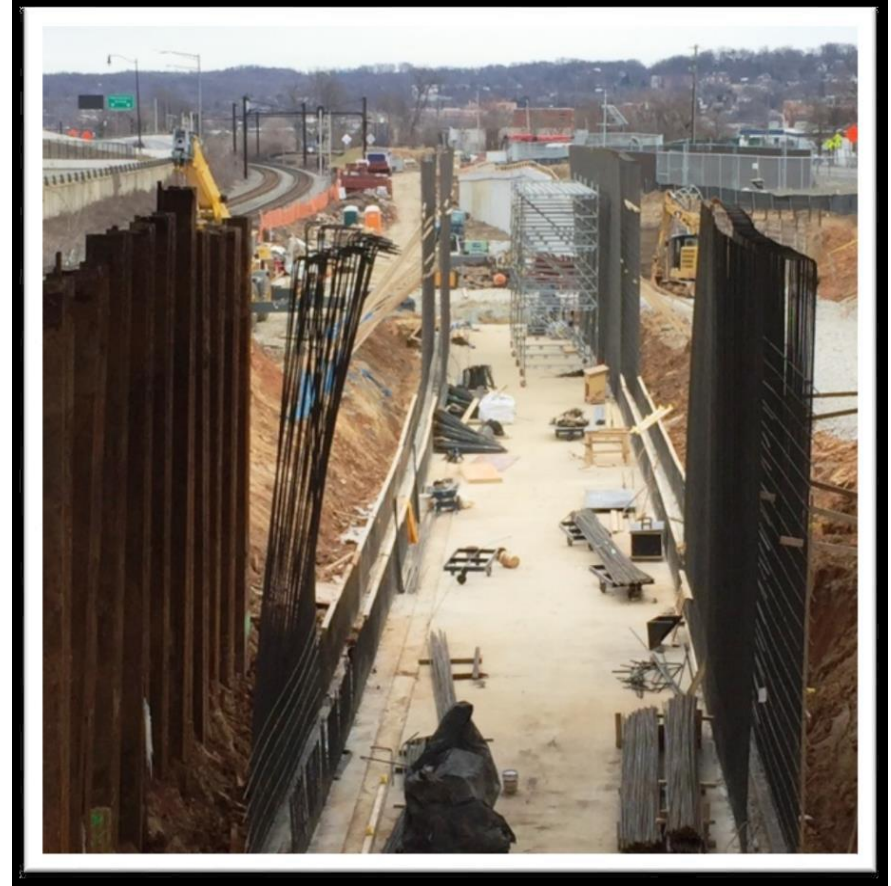


First Tunnel Invert (floor) concrete pour in the 400 Block—February 12th
(looking west)



National Gateway Phase II: Virginia Avenue Tunnel

Virginia Avenue, 11th Street



First Tunnel Invert concrete pour east of 11thSt. –January 14th
(looking east)



National Gateway Phase II: DC Track Lowering



Track 1 Lowering Track Construction Complete



Track 1 construction – Phase 3 Track Shift Complete



CSX Safety Training

Verizon LTE 6:36 PM

csx safety

Top Tweets All Tweets

CSX @CSX 7/8/15
SPOTTED: the CSX team collaborating with first responders during a #safety training session. bit.ly/1d47r3U



14 16

Eleanor H. Norton @EleanorNorton 7/7/15
Thanks, Lauren, my staffer representing me on a CSX rail car safety tour today! Check back in tomorrow for more info!

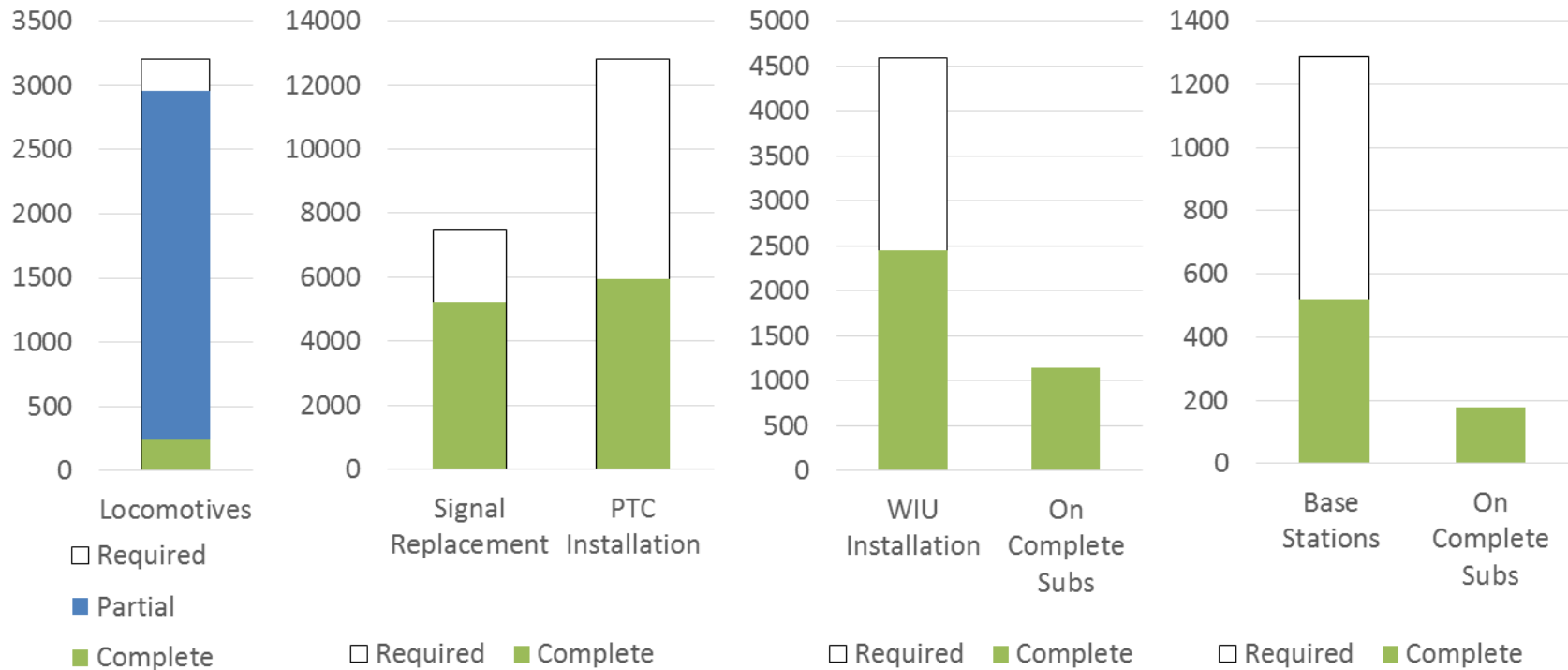


Home Notifications Moments Messages Me

- For the last 4 years, CSX was the safest Class I RR regarding train accident rates and personal injury rates according to the FRA
- CSX SecureNOW System
- RailRespond And AskRail
- April 2015, trained 220 DC Fire and EMS personnel in classroom setting, and over four days in July provided specialized hands-on training



CSX PTC Accomplishments



- Submitted PTC Safety Plan and awaiting FRA approval
- Started Revenue Service Demonstration on 8 subdivisions: 2nd Class I to start RSD
- Eight additional subdivisions ready for Revenue Service

As of 2/22/16



Questions?

IT STARTS
WITH
THE CUSTOMER



How tomorrow moves [**CSX**]
.. ..™