

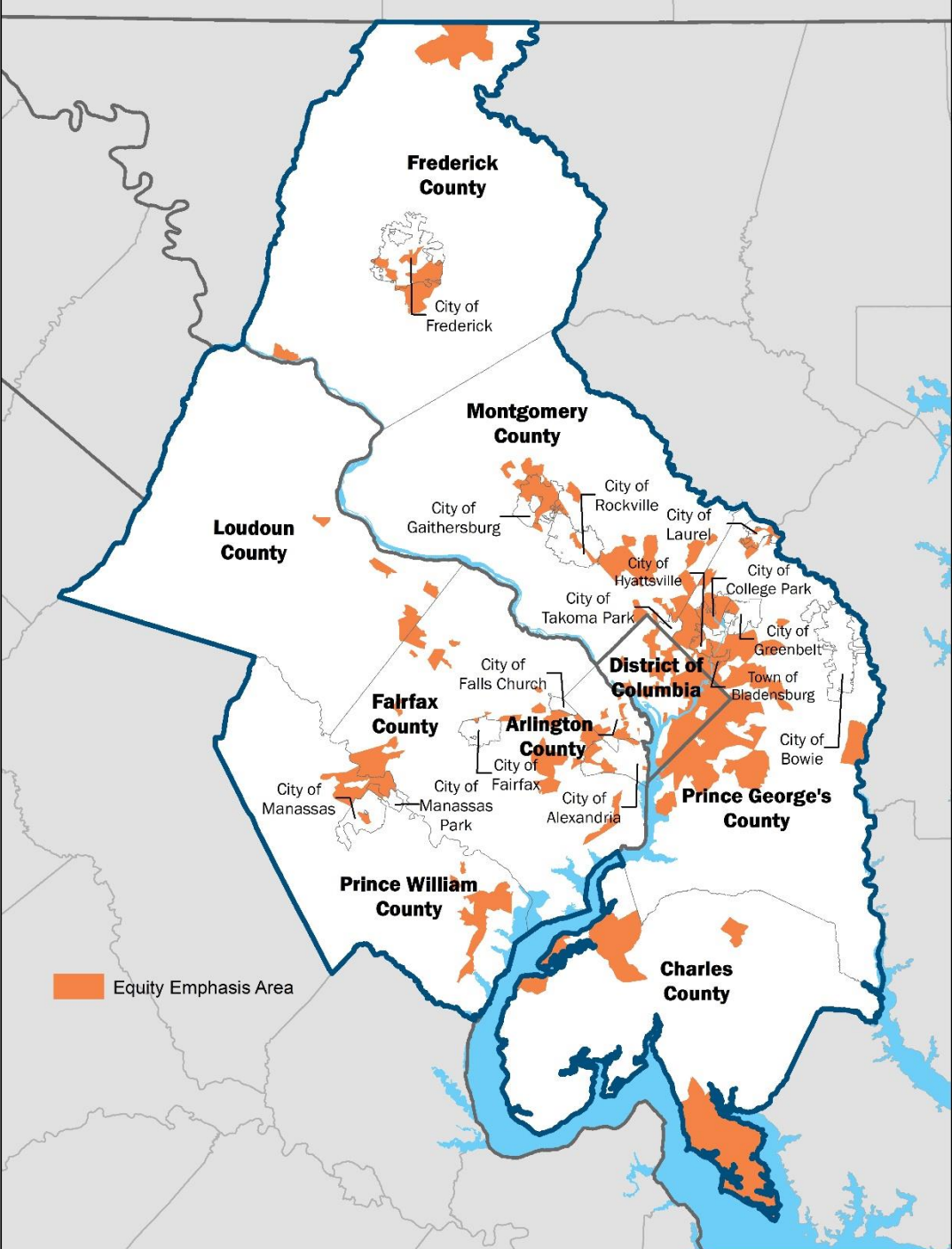
# EQUITY EMPHASIS AREAS (EEAS) IN ACTION

---

**Application across multiple disciplines  
to identify needs and solutions, assess  
progress**

Jon Schermann  
Leah Boggs  
Jennifer Schitter  
COG Planners

COG Board of Directors  
May 11, 2022



# Elevate 350 Equity Emphasis Areas (EEAs)

Areas with high concentrations of underserved residents.

[mwcog.org/equityemphasisareas](http://mwcog.org/equityemphasisareas)

# Roadway Safety

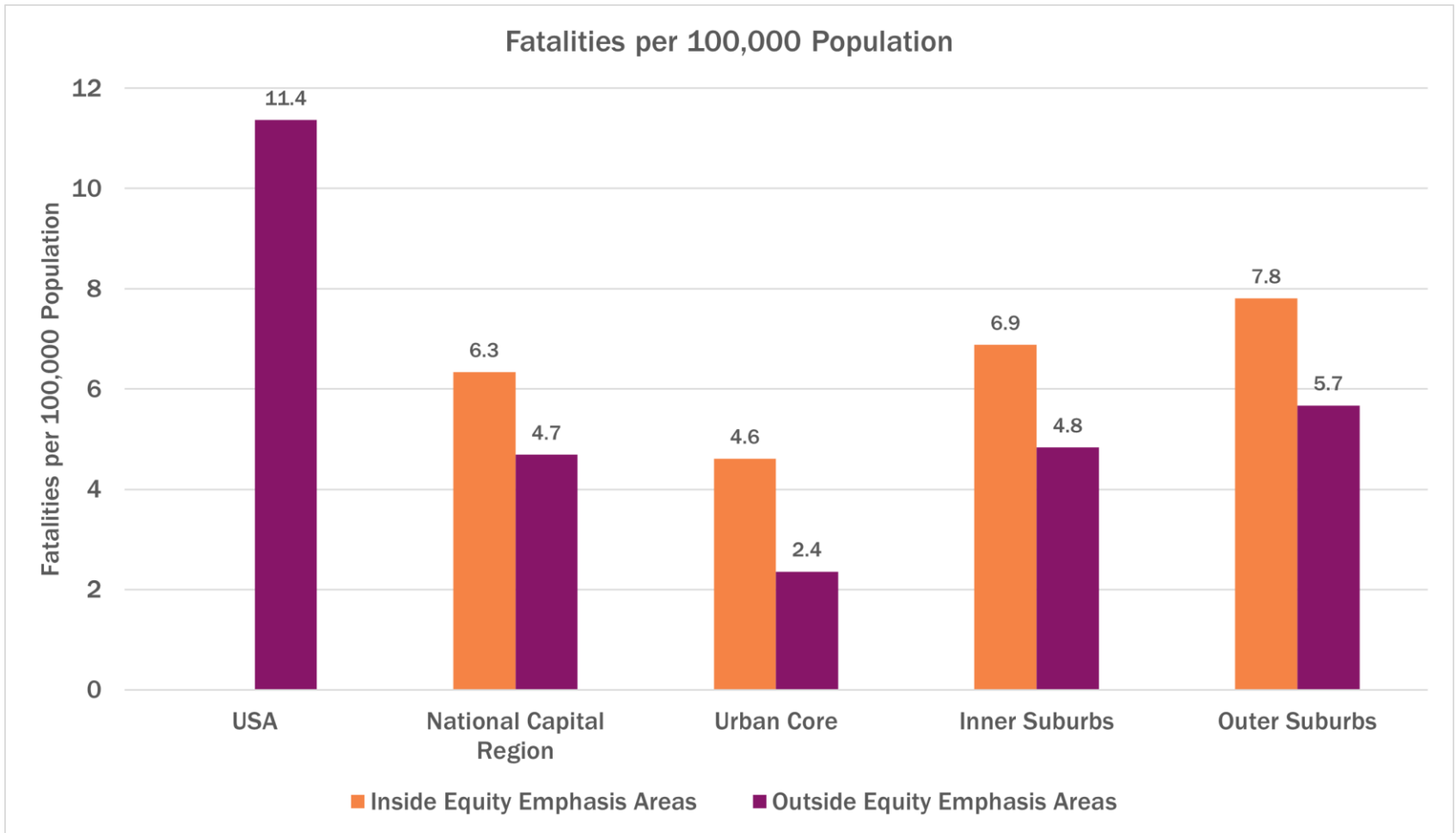


# Equity Analysis of Regional Roadway Safety Outcomes

---

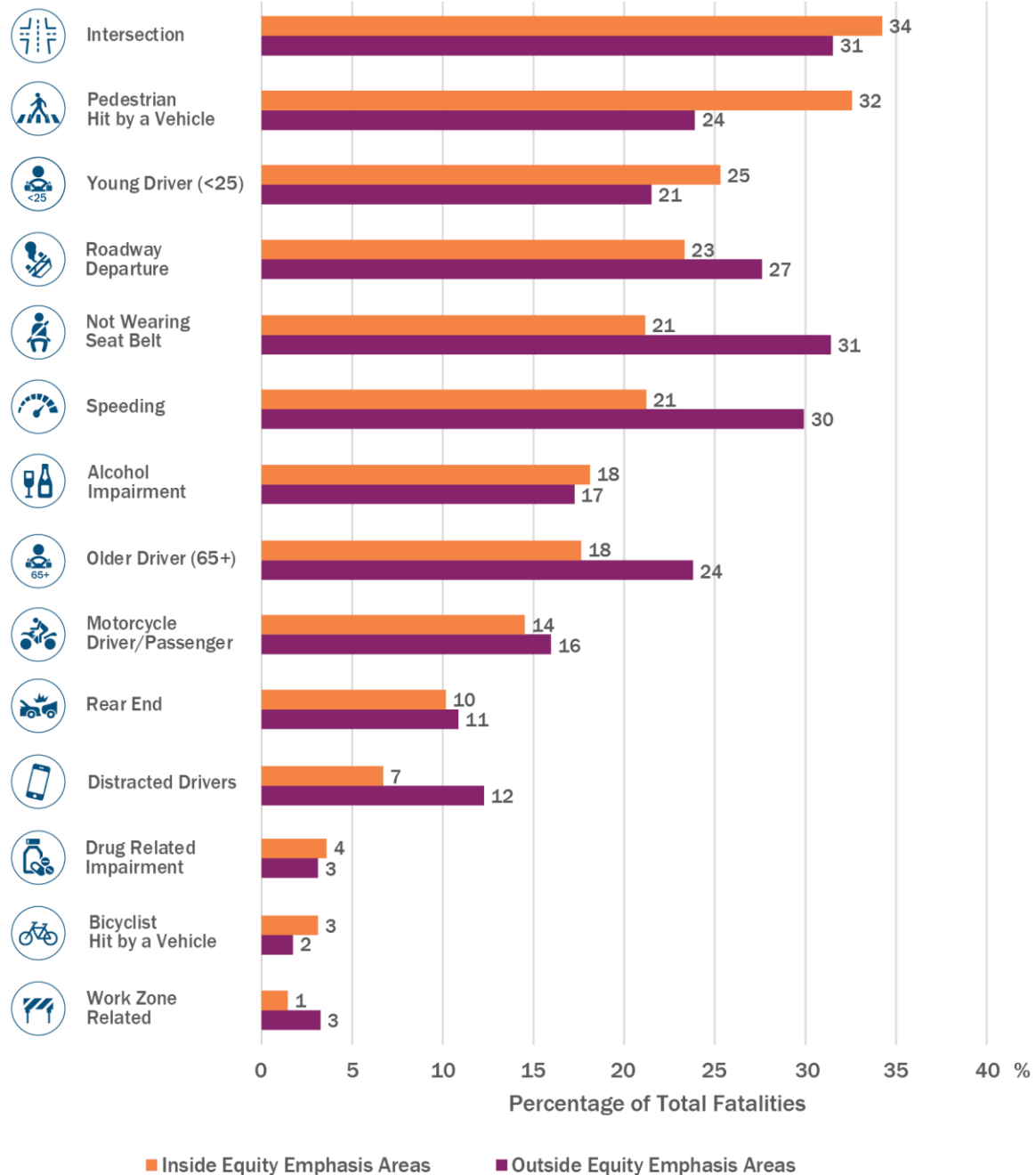
- Regional Roadway Safety Study
  - Commissioned in 2019 in response to unacceptably high numbers of roadway fatalities
  - Results reported to the TPB in spring of 2020
- TPB Action – July 2020
  - TPB Resolution R3-2021: “Safety” Resolution
  - TPB Resolution R1-2021: TPB Equity Statement
- Staff response
  - Reallocated funding to conduct an equity analysis

# Fatalities per 100,000 Population (2014-2018)



# Contributing Circumstances - Fatality Percentage (2014-2018)

Percentage of Total Fatalities by Contributing Circumstance



# Ongoing Actions

---

- Regional Roadway Safety Program (RRSP):
  - Equity part of scoring criteria
  - Of the ten RRSP projects awarded, seven are along corridors that are either within or adjacent to EEAs and three are jurisdiction-wide
- Continue to analyze and report on crash outcomes for our EEAs

# Environmental Planning



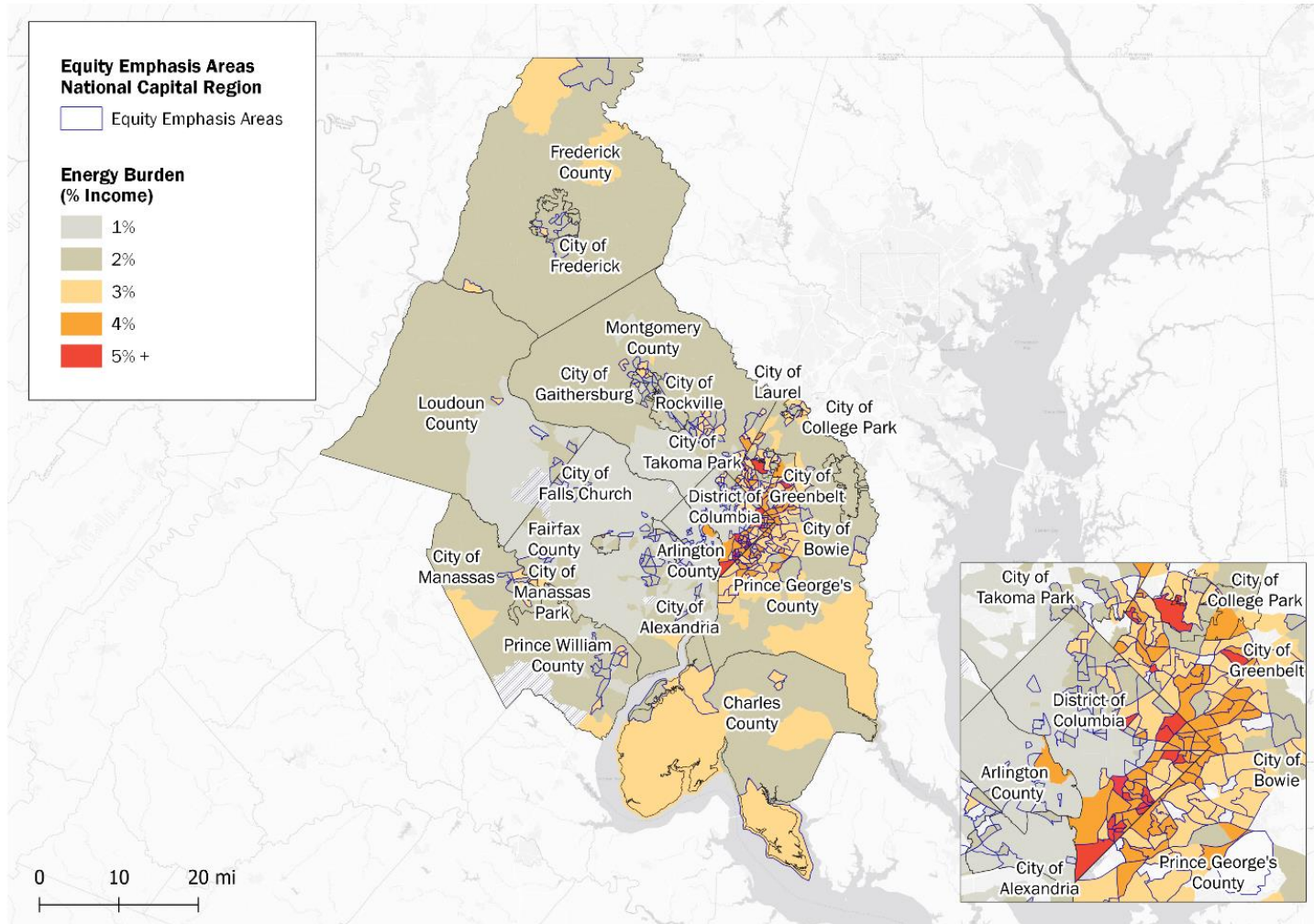


# Equity Analysis of Environmental Impacts

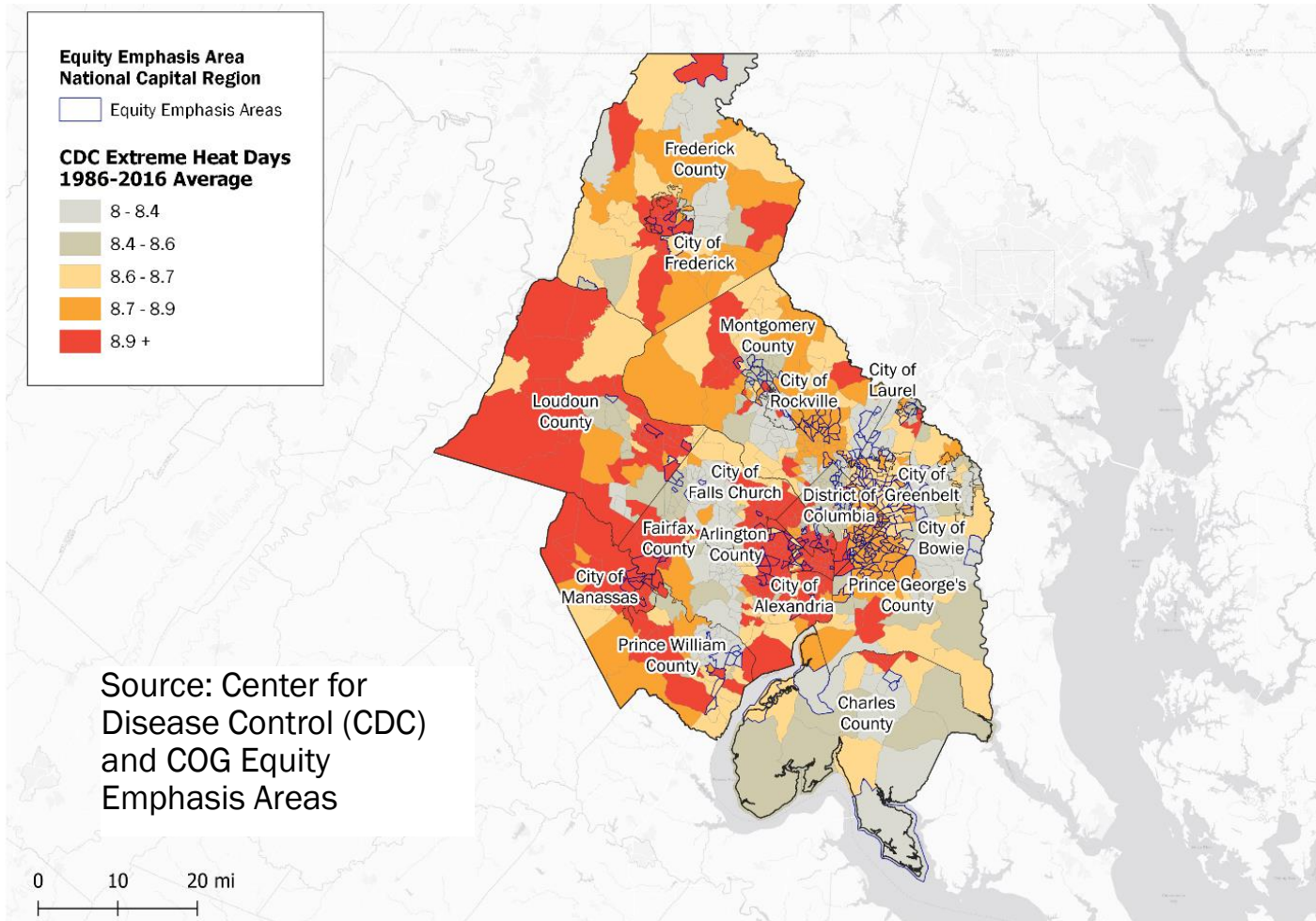
---

- 2030 Climate and Energy Action Plan
  - EEAs were used to analyze the location of various environmental impacts such as energy burden, extreme heat, and flooding and sea level rise.
- Electric Vehicle (EV) Deployment Planning
  - EEAs integral to future work, including EVs and EV charging stations (EVSE) mapping and needs assessment.

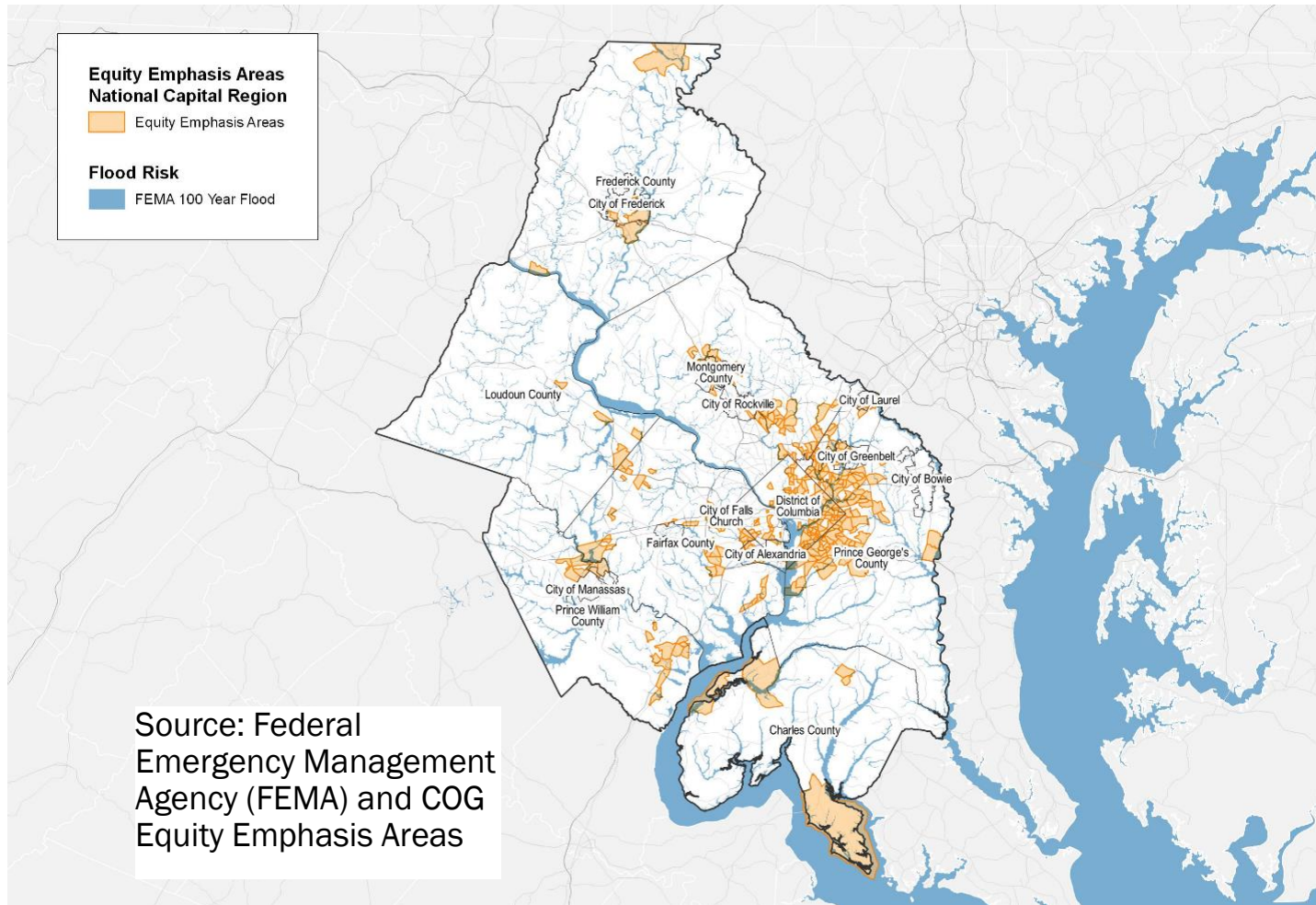
# EEAs and Energy Burden



# EEAs and Extreme Heat



# EEAs and Flash/Riverine Flooding



# Public Health



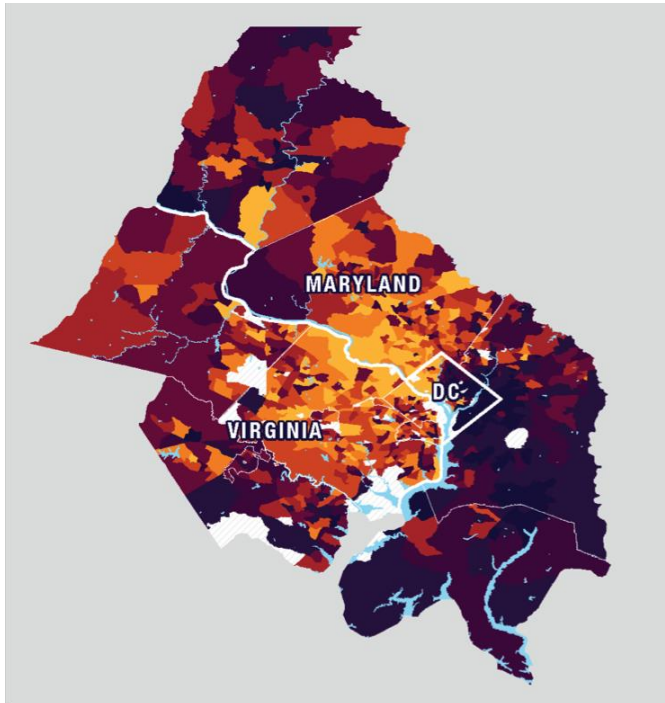
# Mapping Health Disparities Across the Region

---

- *Region Forward* Health Goal
  - “We seek communities in which every person enjoys health and well-being.”
- COG Health Officials Committee
  - Commissioned a study by Virginia Commonwealth University to examine health at the census tract level, focusing on life expectancy and the factors that shape health.

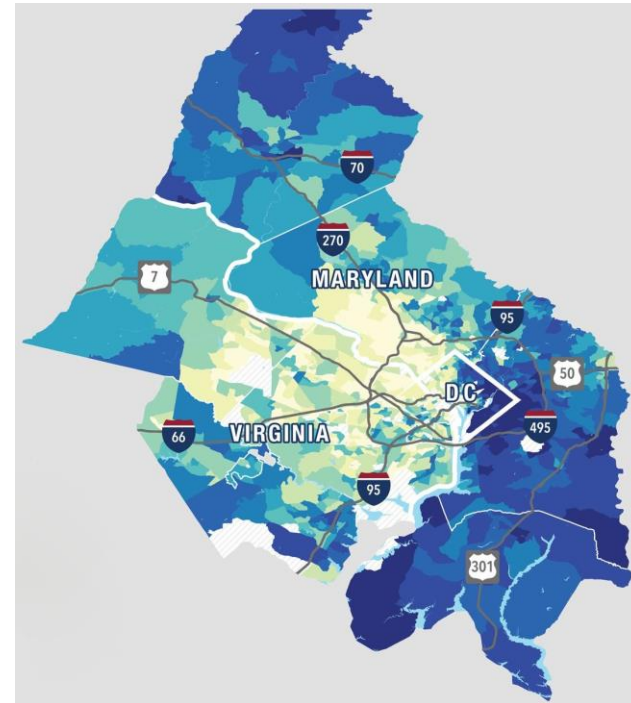
# Study Confirmed Geographic Disparities

Life Expectancy (LE)



**LE:** Avg # of yrs that a newborn can expect to live in a given area based on prior mortality patterns observed in that area

Healthy Places Index (HPI)

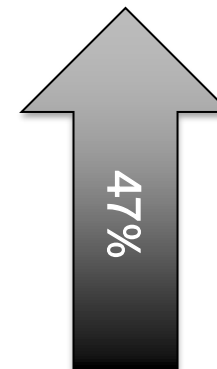


**HPI:** Composite index of 48 indicators across domains. *Correlates with EEAs.*

# Influencing Factors



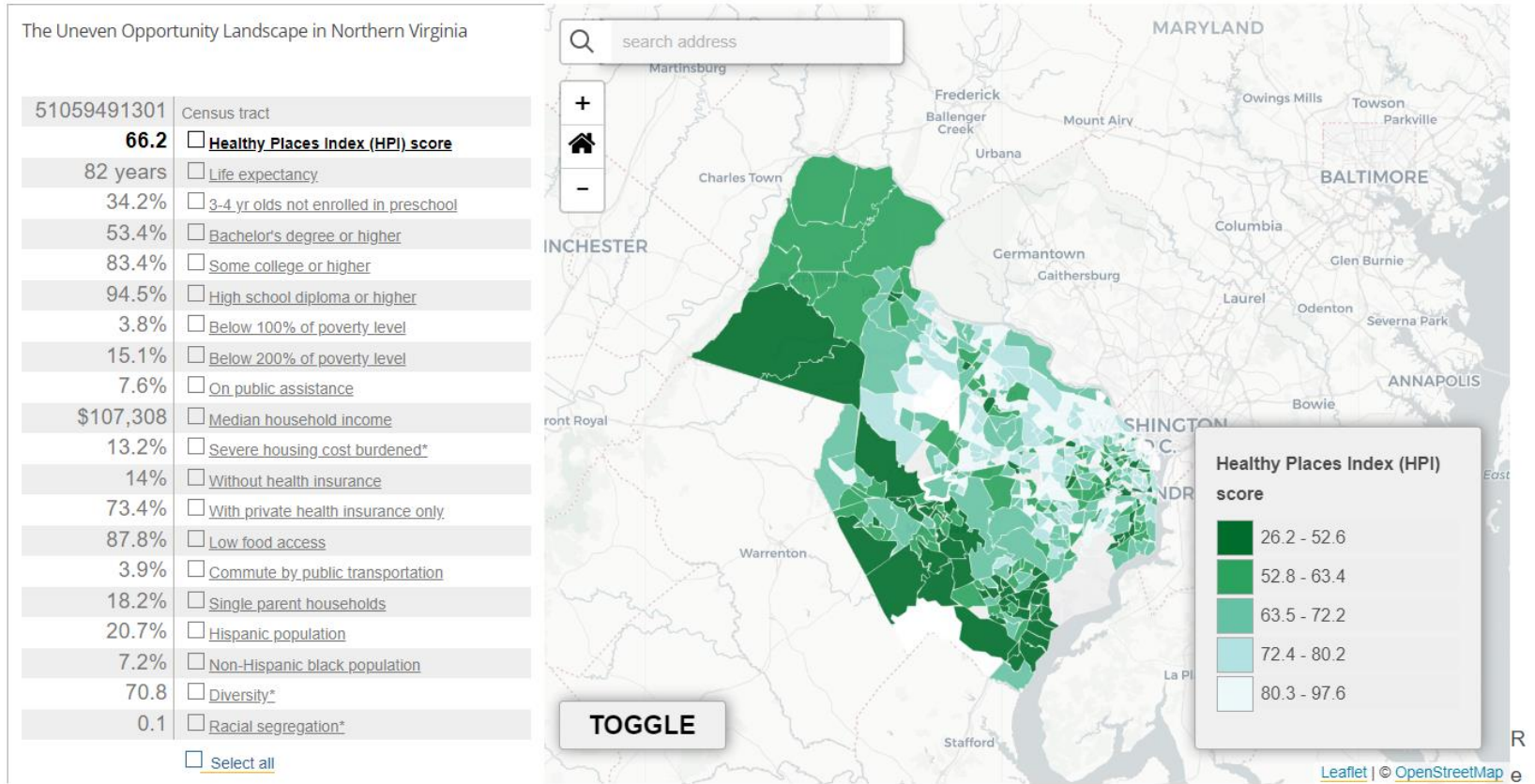
**Race-Ethnicity  
& Immigrant  
Status**



Nearly half (47%) of the variation in health across census tracts in the region was associated with racial inequities.



# Northern Virginia Interactive Map Tool



Read the NVHF-commissioned report [Getting Ahead: The Uneven Opportunity Landscape in Northern Virginia](#) to get a better understanding of the implications of

# Looking Forward

- EEAs becoming part of region's planning vocabulary.
  - Equity lens for planners to identify needs/assess progress.
  - Resource for area policymakers, partner organizations.
  - Selection criteria for COG/TPB grants and technical assistance.



Virginia Commonwealth University: Health Equity Brief for COG

**Jon Schermann**

**Leah Boggs**

**Jennifer Schitter**

COG Planners

[mwcog.org](http://mwcog.org)

---

777 North Capitol Street NE, Suite 300  
Washington, DC 20002