

## **ITEM 8 – Action**

April 21, 2021

### FY 2022 TLC Technical Assistance Recipients

**Action:** Approve TLC technical assistance recipients under the FY 2022 TLC Program.

**Background:** The TPB's Transportation Land-Use Connections (TLC) Program has provided support to local jurisdictions since 2006 as they deal with the challenges of integrating land-use and transportation planning at the community level. Staff solicited applications for the FY 2022 TLC round of technical assistance between January 8 and March 8, 2021. The board will be briefed and asked to approve the applications that are being recommended for funding in FY 2022.



## **MEMORANDUM**

**TO:** National Capital Region Transportation Planning Board  
**FROM:** John Swanson, Transportation Planner  
**SUBJECT:** FY 2022 Transportation Land-Use Connections Technical Assistance Funding Recommendations  
**DATE:** April 15, 2021

---

This memo provides information on the recommendations of the Selection Panel for the FY 2022 round of technical assistance under the Transportation Land-Use Connections (TLC) Program. At the panel's meeting on March 29, the group identified 11 projects to recommend for funding in FY 2022. The TPB is scheduled to vote on the panel's recommendations on April 21.

### **FUNDING RECOMMENDATIONS FOR FY 2021**

A total of \$600,000 will be provided for the TLC Program in FY 2022 through funding in the Unified Planning Work Program (UPWP). The TLC Selection Panel recommends the 11 projects listed below for funding.

The recommended slate of projects is highly consistent with key TPB objectives:

- All 11 projects are in or near Activity Centers.
- 10 projects are in or near Equity Emphasis Areas.
- All 11 projects are in or near high-capacity transit station areas, and eight of these are in or near Transit Access Focus Areas (TAFAs).
- Nine projects support the National Capital Trail Network (NCTN). Three projects are directly part of the NCTN while an additional six will support connections to the NCTN.

Projects recommended for funding:

#### **Discovery District Multi-Use Trail Transit Access Plan**

*College Park, \$60,000*

This project will prepare a plan for a multi-use trail between the University of Maryland East Campus Purple Line Station and the Riverdale Park Purple Line Station. It will review previous recommendations for pedestrian and bicycle access, including the proposal for a "Pink Line" connection made in a 2010 TLC study on Purple Line pedestrian and bicycle access.

#### **Congress Heights Pedestrian Access Study**

*District of Columbia, \$60,000*

This study will examine the existing pedestrian transportation infrastructure in Congress Heights, with a focus on four areas. It will identify where safer pedestrian crossings, more accessible bus stops, and enhanced access to green spaces and community services are needed. The project will build upon a TLC-funded Metrorail Walkshed Improvement Project, conducted in FY 2017.

### **Microtransit in D.C - Assessment of DC Connect and Opportunities for Expansion**

*District of Columbia, \$30,000*

Given the current COVID-19 public health emergency and subsequent reductions in public transit service, the District aims to explore alternative ways to efficiently and effectively improve mobility and transportation equity in the District – particularly for vulnerable populations accessing medical and food services. This study will assess the Department of For-Hire Vehicles' (DFHV) DC Neighborhood Connect microtransit service, identify opportunities for expansion and develop a cost-savings model for funding microtransit compared to traditional bus service.

### **Development of an Active Transportation Plan near the Huntington Metrorail Station**

*Fairfax County, \$55,000*

This project will create an Active Transportation Plan for the Huntington Metrorail station and surrounding area. It will include an assessment of existing conditions, identification of barriers to access, and development of recommendations that will promote walkability, bikeability, and access to transit.

### **East End Transportation Study**

*Falls Church, \$60,000*

A multimodal transportation study for the East End of Falls Church will be conducted under this project. The area encompasses approximately 40 acres of commercial properties on the eastern edge of the City, adjacent to the Seven Corners area in Fairfax County, and approximately one mile south of the East Falls Church Metro Station. The study will support and be incorporated into the City's upcoming small area planning efforts and inform future site layout as part of redevelopment and city grant applications.

### **East Street Redesign**

*City of Frederick, \$60,000*

A new design for East Street will be created under this project, including a road diet, new and improved sidewalks, and bicycle access. The project will extend from North Market to Monocacy Boulevard/New Design Road. It will support a form-based code and a small-area plan initiative for the East Frederick area.

### **Greenbelt Road Corridor Plan**

*Greenbelt, \$55,000*

This project will prepare a plan to enhance multimodal access and increase safety along the Greenbelt Road Corridor. This plan will create a cohesive vision for the corridor and encourage alternate forms of transportation by identifying opportunities to increase bicycle and pedestrian facilities along the corridor.

### **Connecticut Avenue Corridor Pedestrian and Bicycling Access and Safety Study**

*Kensington (Montgomery County), \$55,000*

This planning study will identify bold options for transforming the Connecticut Avenue corridor through the Kensington and Ken-Gar communities, including major intersecting roads (such as Knowles Avenue, Plyers Mill Road/Metropolitan Avenue, and University Boulevard). The study will identify a vision, along with concrete solutions, for improving pedestrian and bicycle access and safety, expanding personal mobility options (e.g., a siting analysis for future Capital Bikeshare and micromobility locations, increasing use of the MARC station, etc.), developing traffic calming measures, and improving connectivity to the National Capital Trail Network to the immediate East and West of Kensington.

### **Cool-Street Design Guidelines and Standards**

*Montgomery County, \$50,000*

Climate change is the underlying subject of this project which will build on the Silver Spring Downtown & Adjacent Communities Plan. The project will study ways to mitigate the effects of escalating temperatures of the urban streetscape to create a more livable, usable, and tolerable streetscape even in the hottest of seasons. The guidelines will: assess a variety of surface materials, colors and textures showing temperatures and emission rates; offer alternative cooler material options when designing streetscapes; include green infrastructure analysis and standards as integrated elements within all streetscapes to maximize cooling and shading capacities; and outline other features that can be considered for cooling the streetscape and community.

### **Anacostia Gateway Connector**

*Prince George's County, \$60,000*

This project will develop 30% design plans, a geotechnical study, and a cost estimate for a more promising alignment of the Anacostia Gateway Connector/Prince George's County Connector, a long-planned (30 years) trail link between the NW Branch Trail at West Hyattsville and the Metropolitan Branch Trail at Ft. Totten.

### **Innovation Park Town Center Shuttle Service Feasibility Study**

*Prince William County, \$55,000*

This feasibility study will determine the capital infrastructure and operational needs to implement a proposed shuttle service to points of interest within the Innovation small area, including employment centers, commercial, and recreation, and the Broad Run VRE Station.

## **APPLICATION PROCESS**

On January 8, 2021, the TPB issued a call for projects for the FY 2022 round of TLC technical assistance. The deadline for application submissions was March 8, 2021. Applicants were invited to submit optional abstracts which provided applicants an interim opportunity for TPB staff to review project concepts and to provide feedback on how to develop stronger TLC applications.

As in past years, technical assistance was again offered in amounts between \$30,000 and \$60,000 for planning projects, and up to \$80,000 for 30% design projects. The Call for Projects and the application placed a focus on TPB priorities, including the aspirational initiatives included in Visualize 2045.

The TPB received 27 applications for FY 2022. Total requested funding for the entire application package was \$1,645,000. This was the largest total request and largest number of applications received since the program's inception in 2006.

For this application cycle, \$600,000 is available. This includes three funding sources:

- \$260,000 from the TPB's FY 2021 UPWP core regional planning funds. Applications from all TPB jurisdictions are eligible for these funds
- \$260,000 from the Maryland UPWP Technical Assistance account for projects from Maryland
- \$80,000 from the Virginia UPWP Technical Assistance account for projects from Virginia

## SELECTION PROCESS

The selection panel included the following members:

- Doug Noble, Institute of Transportation Engineers (ITE)
- Lisa Rother, Former Director, Urban Land Institute Washington Chapter
- Claire Randall, Transportation Research Board
- Michael Farrell, COG/TPB staff
- Nicole McCall, COG/TPB staff
- John Swanson, COG/TPB staff

The selection panel met on March 29 to review the project applications and develop a list of recommended projects for the FY 2022 round of TLC technical assistance. The selection panel used established regional evaluation criteria and their own extensive industry knowledge to assess the proposed projects. The selection panel members individually reviewed and scored each application in advance based on their assessments of the projects as well as regional criteria. The panel members then used their scores to divide the applications in rankings of high/medium/low. The rankings served as a starting point for the panel's collective discussion.

Based upon discussion of the regional and local merits of the applications, the selection panel developed a list of 11 projects to recommend to the TPB for approval. The panel believes this package of projects will be locally and regionally beneficial. In developing the list, the panel strove to equitably allocate funding shares of different sizes among the District of Columbia, Maryland, and Virginia, while also attempting to create a slate of projects that addresses regional priorities across a diversity of topics affecting core, inner, and outer jurisdictions.

In some cases, the panel chose to award funding at lower levels than the applications requested. These changes were made in accordance with information on scalability provided in the applications. In other cases, the panel provided guidance regarding the scopes for specific projects.

## PROPOSED PROJECT COMPLETION TIMELINE

On April 21, 2021, the TPB will be asked to approve the proposed slate of 11 projects for funding under the FY 2022 TLC technical assistance program. Upon approval of the projects, TPB staff will begin to coordinate with the jurisdictions that have been awarded technical assistance to commence the consultant selection process from the pre-qualified list of TLC consultants. All projects will begin soon after consultant contracts are signed. The projects will be scheduled for completion by June 30, 2022.

For further questions regarding the TLC program, contact John Swanson ([jswanson@mwkog.org](mailto:jswanson@mwkog.org); 202-962-3295), Nick Suarez ([nsuarez@mwkog.org](mailto:nsuarez@mwkog.org)), or Arianna Koudounas ([akoudounas@mwkog.org](mailto:akoudounas@mwkog.org)).



# TRANSPORTATION LAND USE CONNECTIONS

## FY 2022 TECHNICAL ASSISTANCE

John Swanson  
Transportation Planner

Transportation Planning Board  
April 21, 2021



National Capital Region  
Transportation Planning Board

Agenda Item #8

# Background on the TLC Program

---

- Began in 2006
  - 145 Technical Assistance projects funded for more than \$6 million between 2007-2021
- Promotes TPB policy objectives:
  - Multimodal transportation options
  - Land-use enhancements in activity centers and around high-capacity transit stations
  - Access for low-income and minority communities
  - Access to transit
  - Key regional trails



# New Specificity this Year

- Began in 2006
  - 145 Technical Assistance projects funded for more than \$6 million between 2007-2021
- Promotes TPB policy objectives:
  - Multimodal transportation options
  - Land-use enhancements in activity centers and around high-capacity transit stations
  - Access for low-income and minority communities
  - Access to transit → **Transit Access Focus Areas**
  - Key regional trails → **National Capital Trail Network**





# Program Components

---

- Planning and design projects
- Small (\$30,000-\$80,000)
- Short-term (8-9 months)
- Cover a range of issues, including ped/bike planning, corridor and small area planning, and development of analytical tools



# Funding for Technical Assistance in FY22

---

- Total funding for FY 2022: \$600,000
  - *Core Regional Funds*: \$260,000 – All projects are eligible
  - *Maryland Technical Assistance*: \$260,000 – Maryland projects are eligible
  - *Virginia Technical Assistance*: \$80,000 – Virginia projects are eligible



# Solicitation

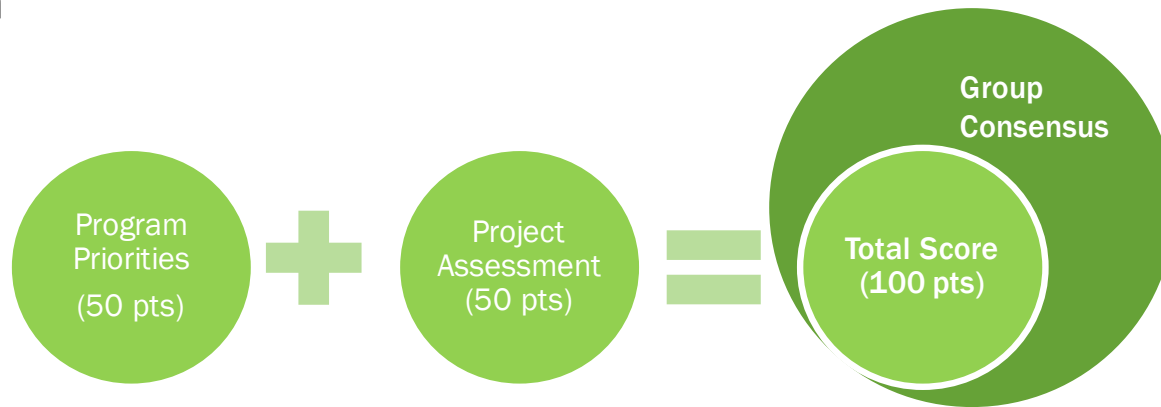
---

- Application solicitation period: January 8–March 8, 2021
  - Optional Abstracts were due January 26
- 27 applications were received
  - 3 applications from the District of Columbia, 14 from Maryland, and 10 from Virginia
  - Total of \$1,645,000 in requested funding



# Selection

- Panel
  - External experts (Institute of Transportation Engineers, Urban Land Institute, Transportation Research Board) and COG/TPB staff
- Evaluation



- Panel seeks to fund a variety of types of projects, provide regional value, and reflect geographic balance among projects
- Final recommendations based on consensus

# Recommended Projects

---

- Total funding: \$600,000
- 11 applications recommended
  - 11 projects – in/near Activity Centers
  - 10 projects – in/near Equity Emphasis Areas
  - 11 projects – in/near high-capacity transit stations
    - 8 projects – in/near Transit Access Focus Areas (TAFAs)
  - 9 projects – support National Capital Trail Network (NCTN)
    - 3 projects – directly part of the NCTN
    - 6 projects – support connections to the NCTN.



# Draft Funding Recommendations

| Jurisdiction Name      | Project                                                | Panel Recommendation |
|------------------------|--------------------------------------------------------|----------------------|
| College Park           | Discovery District Multi-Use Trail Transit Access Plan | \$60,000             |
| District of Columbia   | Congress Heights Pedestrian Access Study               | \$60,000             |
| District of Columbia   | Assessment of Microtransit                             | \$30,000             |
| Fairfax County         | Active Transportation Plan near Huntington Metrorail   | \$55,000             |
| Falls Church           | East End Transportation Study                          | \$60,000             |
| The City of Frederick  | East Street Redesign                                   | \$60,000             |
| Greenbelt              | Greenbelt Road Corridor Plan                           | \$55,000             |
| Kensington (Mont. Co)  | Connecticut Avenue Corridor Planning                   | \$55,000             |
| Montgomery County      | Cool-Street Design Guidelines and Standards            | \$50,000             |
| Prince George's County | Anacostia Gateway Connector                            | \$60,000             |
| Prince William County  | Innovation Park Shuttle Service Feasibility Study      | \$55,000             |

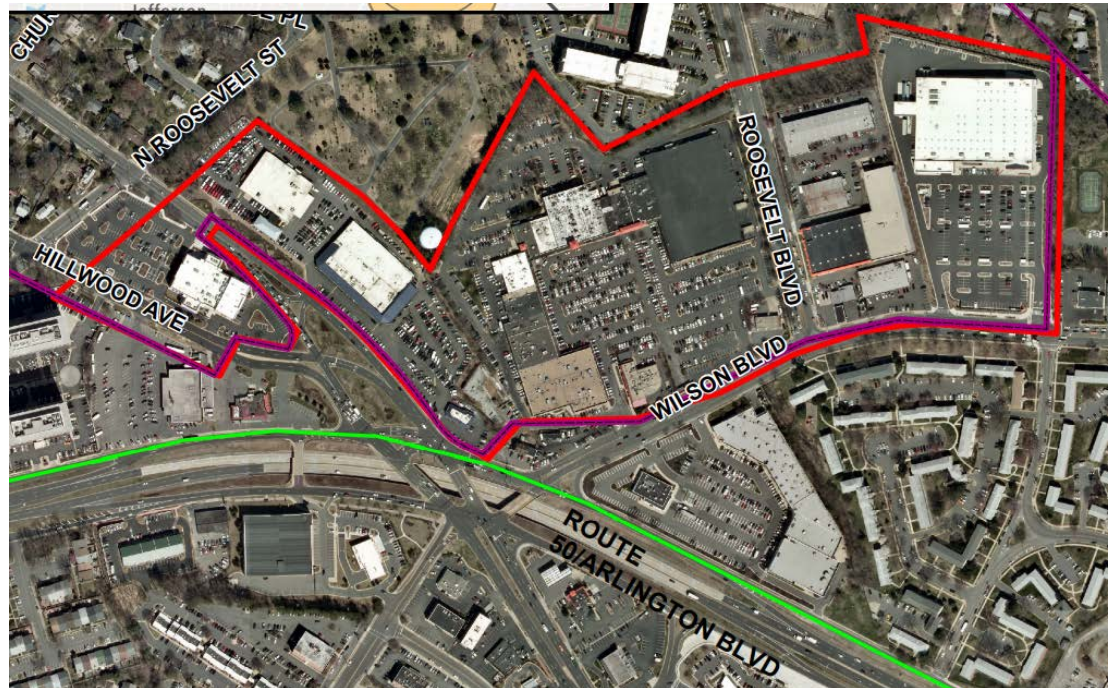


# Details from a few examples...



# Falls Church: East End Transportation Study

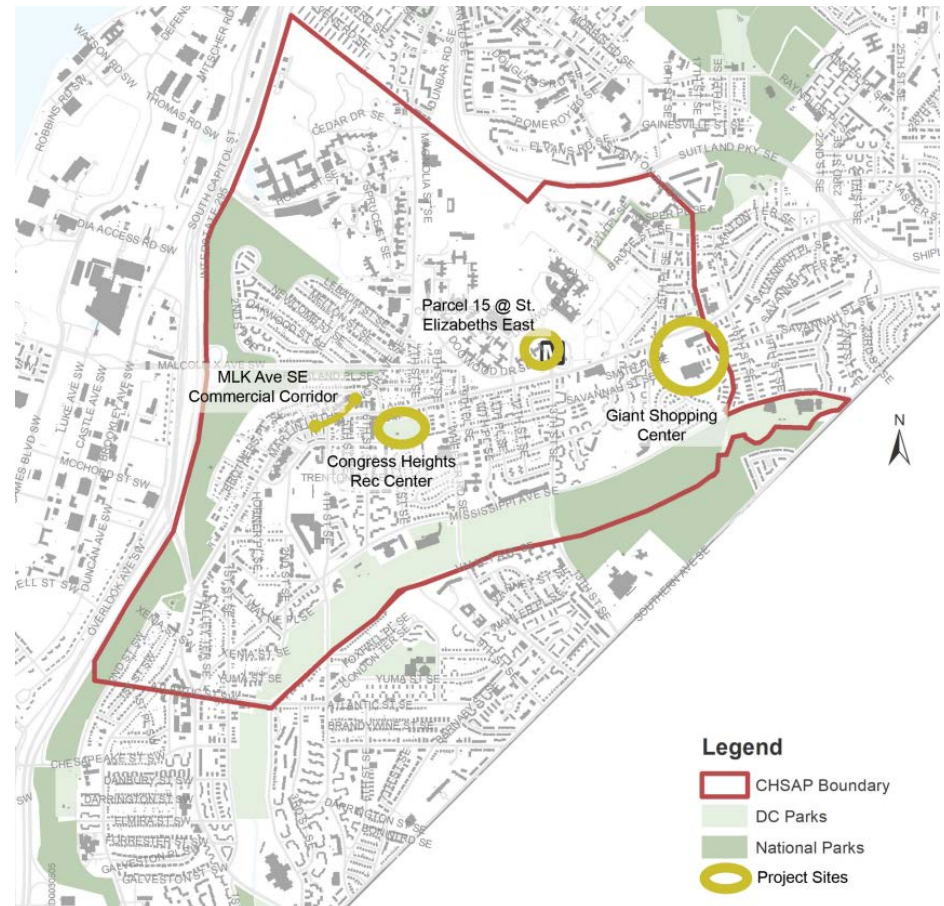
- Approximately 40 acres of commercial properties. Part of Eastern Gateway/Seven Corners
- A “crossroads” -- transportation connections; cultural and commercial; multi-jurisdictional
- Make recommendations for connectivity and accessibility





# DC: Congress Heights Pedestrian Access Study

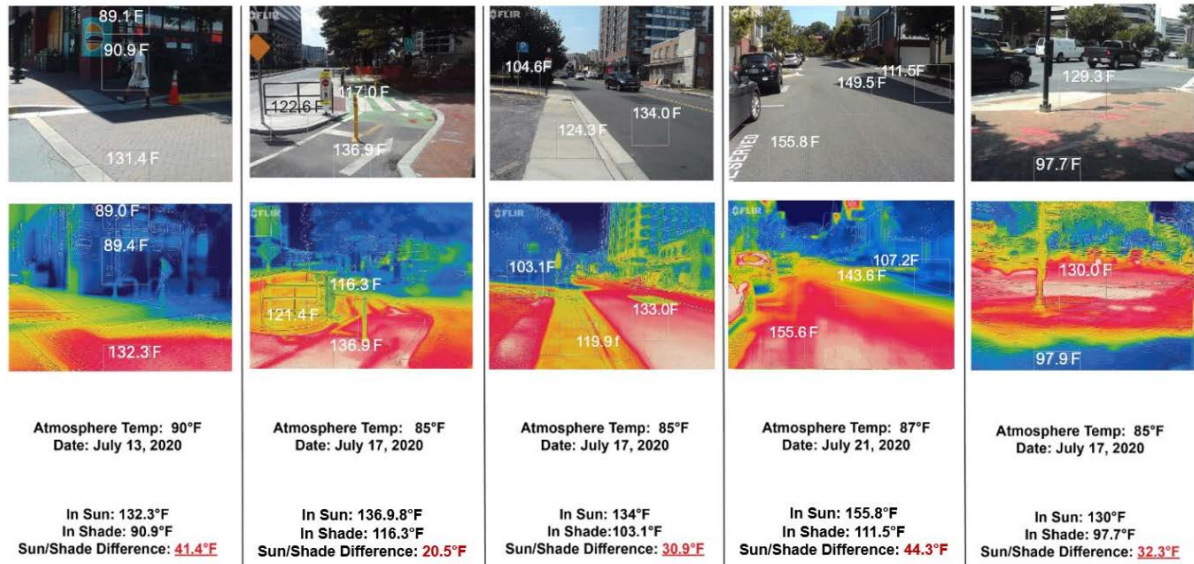
- Focus on pedestrian access to four community-serving sites
- Identify needs for safer pedestrian crossings, more accessible bus stops, enhanced access to green spaces and community services.
- Coordinated with previous and ongoing planning work, including St. Elizabeth's redevelopment



# Montgomery County: Cool-Street Design Guidelines & Standards

- Identify ways to mitigate the effects of climate change on the escalating temperatures of the urban streetscape
- Create a more livable, usable, and tolerable streetscape even in the hottest of seasons.
- Build on the Silver Spring Downtown & Adjacent Communities Plan

## Commercial Zone: Infrared Surface Temperature Readings



# Next Steps

---

- Seek TPB approval of project recommendations at meeting on April 21
- Begin consultant selection process in May



## John Swanson

Transportation Planner

(202) 962-3295

[jswanson@mwkog.org](mailto:jswanson@mwkog.org)

## Arianna Koudounas

Regional Planner

(202) 962-3312

[akoudounas@mwkog.org](mailto:akoudounas@mwkog.org)

## Nick Suarez

Temporary Staff Assistant

[nsuarez@mwkog.org](mailto:nsuarez@mwkog.org)

[mwkog.org/TPB](http://mwkog.org/TPB)

---

Metropolitan Washington Council of Governments

777 North Capitol Street NE, Suite 300

Washington, DC 20002

