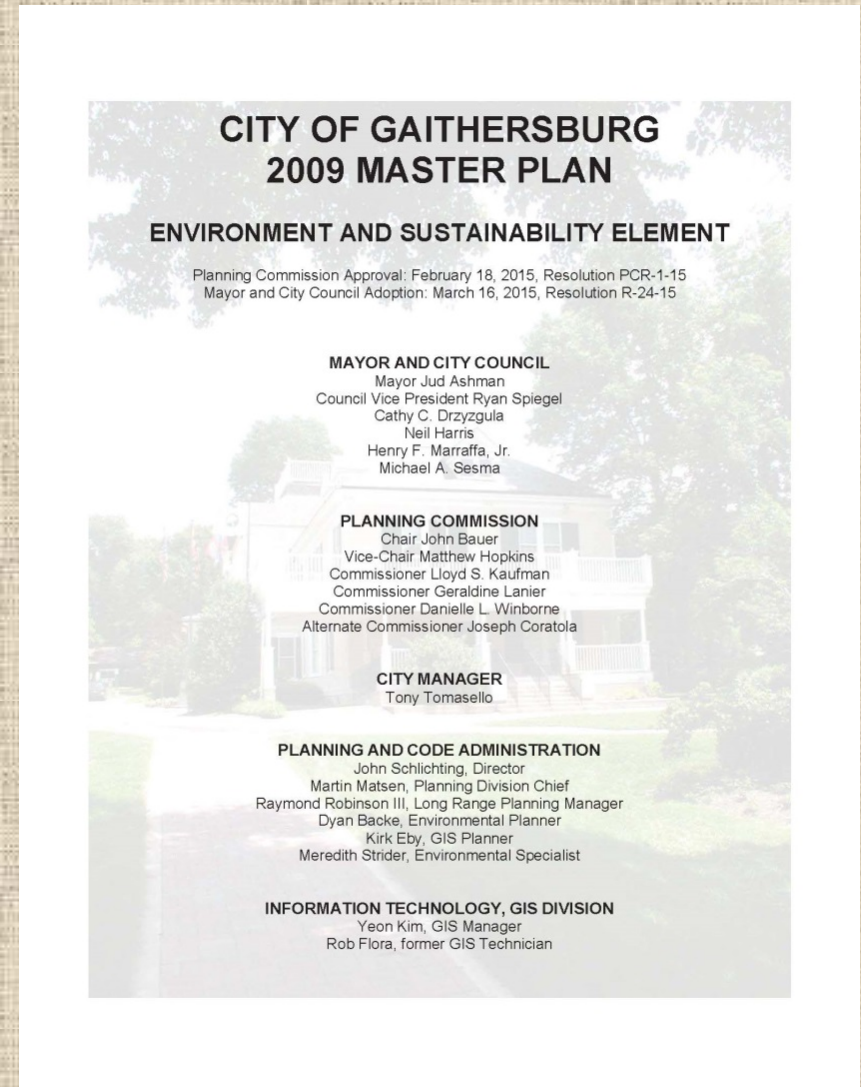
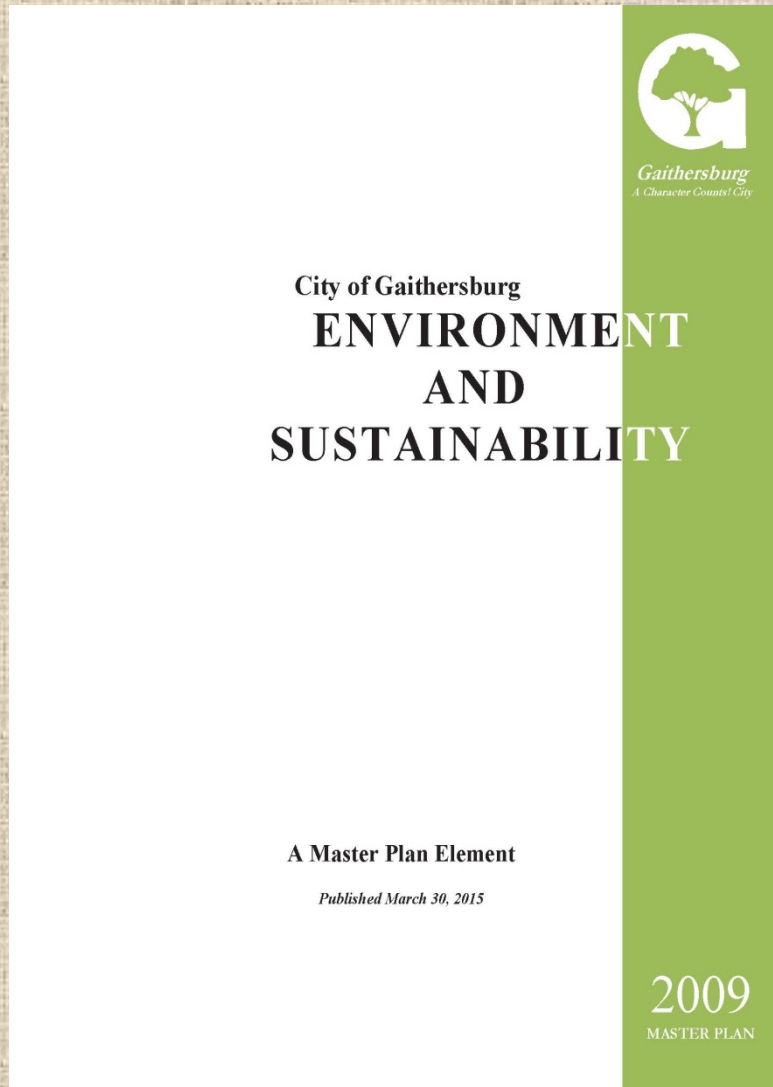
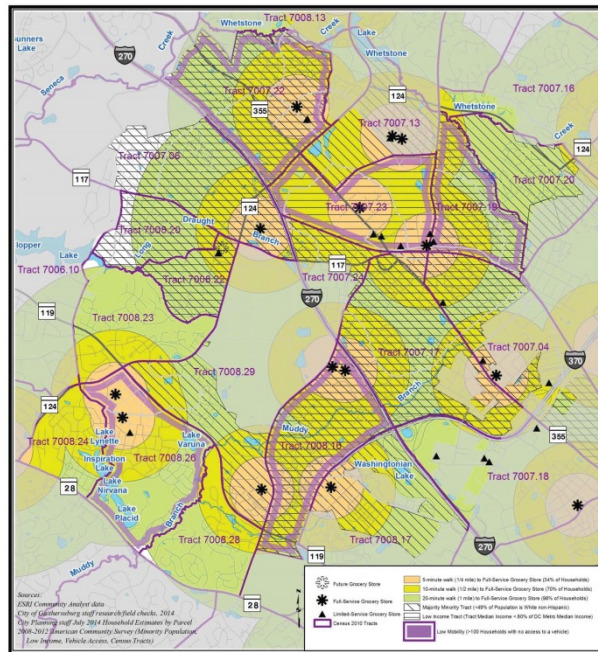


Environment & Sustainability Element

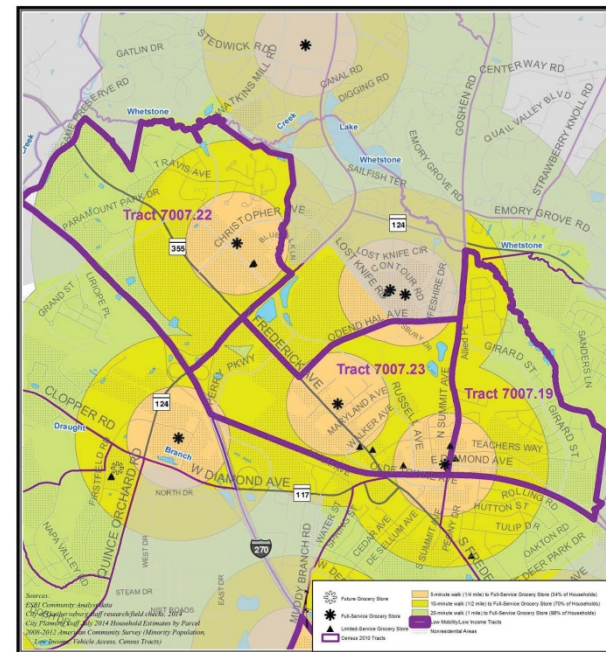


Overall Food Access Map and Detail Neighborhood Map

Map 17: Food Access, 2014



Map 22: Food Access - Northern Subject Tracts



Environment and Sustainability Master Plan

Implementation Strategies

- ❑ **Policy Action:** This method involves the establishment of policies or guidance by City officials, such as the City Council, Planning Commission, et al. that do not result in changes to the City Code or formalized regulations. Examples include the annual Strategic Plan and the Process & Overview Element to the Master Plan.
- ❑ **Code/Regulatory Action:** This method includes instances when a City policy results in the establishment of regulatory, binding requirements that must be adhered to. Examples include the Forest Conservation Ordinance, City technical manuals, Traffic Impact Statement Regulation, and the City Public Reforestation Policy.
- ❑ **Capital Improvement Plan (CIP)/ Budget:** This method involves dedicated funding of a specific project or program that will accomplish the associated recommendation. Examples include stream restoration projects, the purchase of software, and the hiring of technical consultants.
- ❑ **City Staff:** While all methods involve City Staff, this method reflects an action solely accomplished by staff members. Examples include research and analysis efforts, grant writing, and site plan review.
- ❑ **Interagency Cooperation:** This method involves cooperative City efforts, studies, and projects conducted or cost-shared with other Public Sector or quasi-Public Sector organizations or agencies such as Metropolitan Washington Council of Governments, Maryland Department of the Environment, and WSSC. Also included in this category are the utilities such as Pepco and Washington Gas.
- ❑ **Public-Private Partnerships:** This method involves cooperative City efforts, studies, and projects conducted or cost-shared with Private Sector entities. These groups may include the business community, Homeowners' Associations, Non-Governmental Organizations, Non-Profit Organizations, and religious institutions.
- ❑ **Private Involvement and Action:** This method reflects actions taken by individual City of Gaithersburg residents, the development community, Homeowners' Associations, Non-Governmental Organizations, Non-Profit Organizations, and religious institutions outside of City programs and projects. Examples include household recycling, donation of land to land trusts, and community volunteer activities.