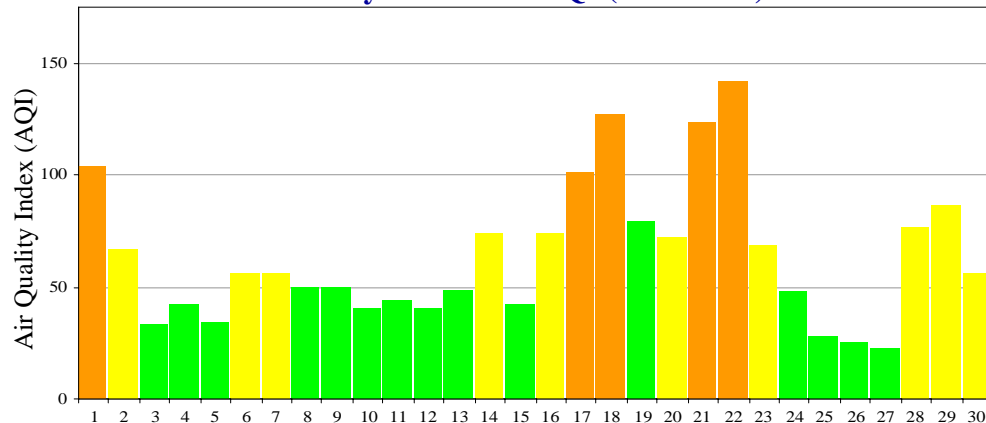




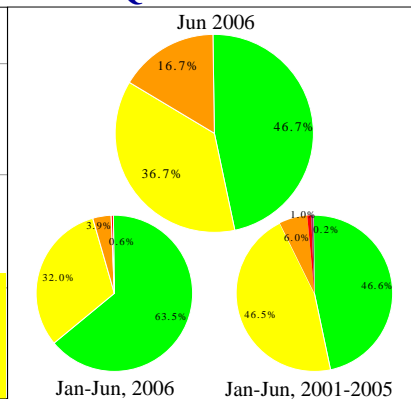
# Quality of Air

## for Baltimore Forecast Region, June 2006

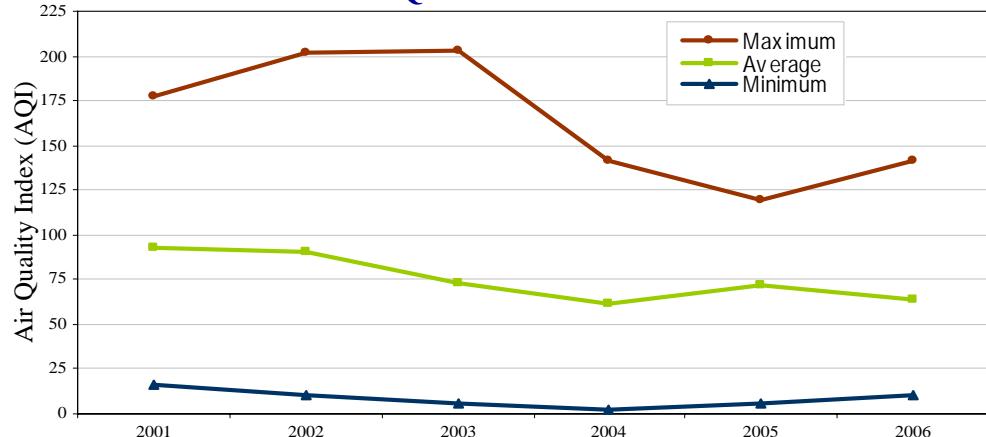
### Daily Maximum AQI (June 2006)



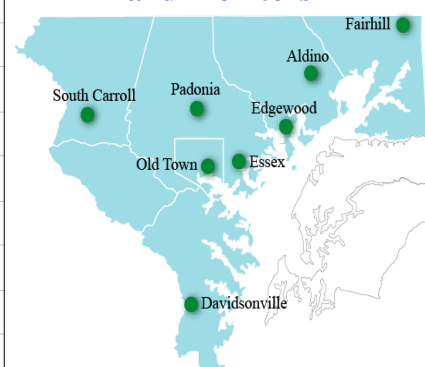
### AQI Distribution



### AQI Statistics for June



### Baltimore Forecast Region and Monitors



### Number Days Above 100 AQI vs. Days ≥ 90 F at BWI (2006 Data)

	Jan	Feb	Mar	Apr	May	Jun	Jul	Aug	Sep	Oct	Nov	Dec	Total
8-hr Ozone	0	0	0	0	3	5	n/a	n/a	n/a	n/a	n/a	n/a	8
24-hr PM Fine	0	0	0	0	0	0	n/a	n/a	n/a	n/a	n/a	n/a	0
Both Pollutants	0	0	0	0	3	5	n/a	n/a	n/a	n/a	n/a	n/a	8
Day ≥ 90 F	0	0	0	0	2	6	n/a	n/a	n/a	n/a	n/a	n/a	8

June is considered the start of the summer season, with the summer solstice occurring on June 21st. The Baltimore forecast region observed 8-hour ozone AQI levels exceeding the EPA National Ambient Air Quality Standard (NAAQS) on five days. So how does the historical AQI data compare to this year thus far? Well the news is good! The AQI data thus far for 2006 shows a marked decrease when compared to the historical AQI data from 2001-2005. This decrease is due in part to local controls here in Maryland, controls in other upwind states which in turn will cause a decrease in transported ozone and ozone precursors into Maryland, and of course the weather. Speaking of the weather. June was slightly warmer than normal and rainfall was much more than normal with over seven inches of rain falling. Much of the rain fell during the last week of June. As always visit [www.air-watch.net](http://www.air-watch.net) for the current air quality conditions and the three-day forecast or call the air quality hotline at 410-537-3247.

### Air Quality Index (AQI)



MARYLAND DEPARTMENT OF THE ENVIRONMENT

1800 Washington Boulevard | Baltimore, MD 21230

410-537-3000 | 1-800-633-6101

Note: "SG" denotes Sensitive Groups.  
Data presented for 2006 is preliminary.

