



County of Fairfax, Virginia

FOUR EFFORTS TO IDENTIFY BICYCLE & PEDESTRIAN NEEDS FOR HIGH-CAPACITY TRANSIT STATIONS IN FAIRFAX COUNTY

Chris Wells

County of Fairfax, Virginia

Bicycle and Pedestrian Programs Manager



Bicycle and Pedestrian Programs

- Board of Supervisors established the Pedestrian Program in 2002 and Bicycle Program in 2006
- Board directed FCDOT to lead the effort to improve pedestrian safety and mobility, including constructing pedestrian and bicycle projects
- Board has prioritized \$314 million of funding for pedestrian/bicycle projects from FY 2002 to FY 2020
- Intersection Safety and Access Projects, Sidewalk and Trail Projects, Major Pedestrian/Bicycle Needs Studies

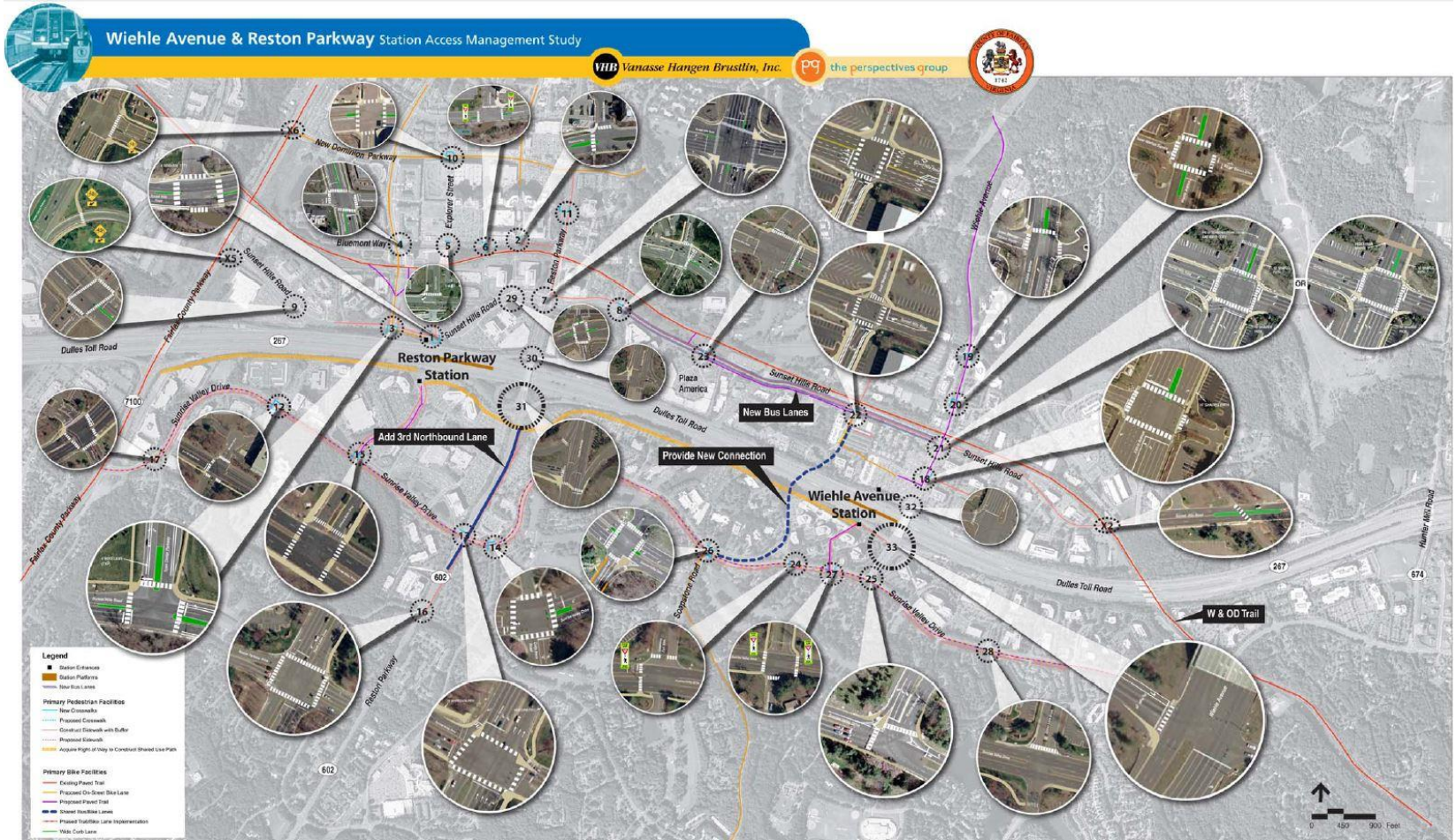


Major Pedestrian/Bicycle Needs Studies

- Wiehle Avenue/Reston Parkway Station Access Management Plans (RMAG for Reston Metrorail Access Group), 2008
- Tysons Metrorail Station Access Management Study (TMSAMS), 2009 to 2011
- Herndon Metrorail Stations Access Management Study (HMSAMS), 2014
- Vienna Metrorail Bicycle Access Study, 2016 MWCOG Transportation and Land Use Connections Program



RMAG





RMAG

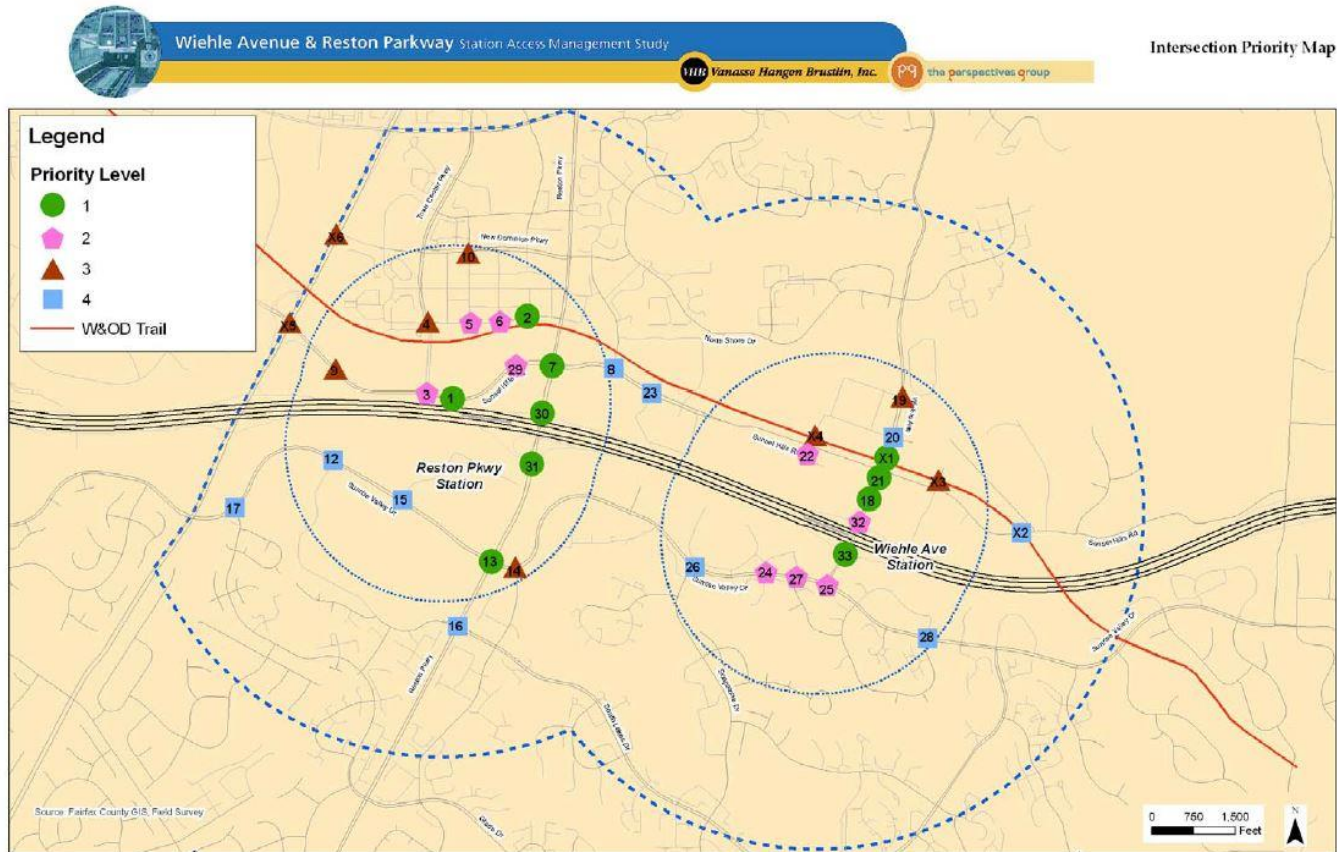
- Roadways
 - Land Use and Travel Demand Growth
 - Roadway Capacity Additions
 - Traffic Analysis Results
- Pedestrian and Bike Facilities
 - Estimated Ped LOS, Walk Trips to/from Stations
 - Sidewalk Improvements, Bicycle Recommendations, Trail Crossing Recommendations, Intersection Improvements
- Transit and Feeder Bus
 - Operating Plan, Proposed Capital Plan, Vehicle and Facility Requirements



RMAG

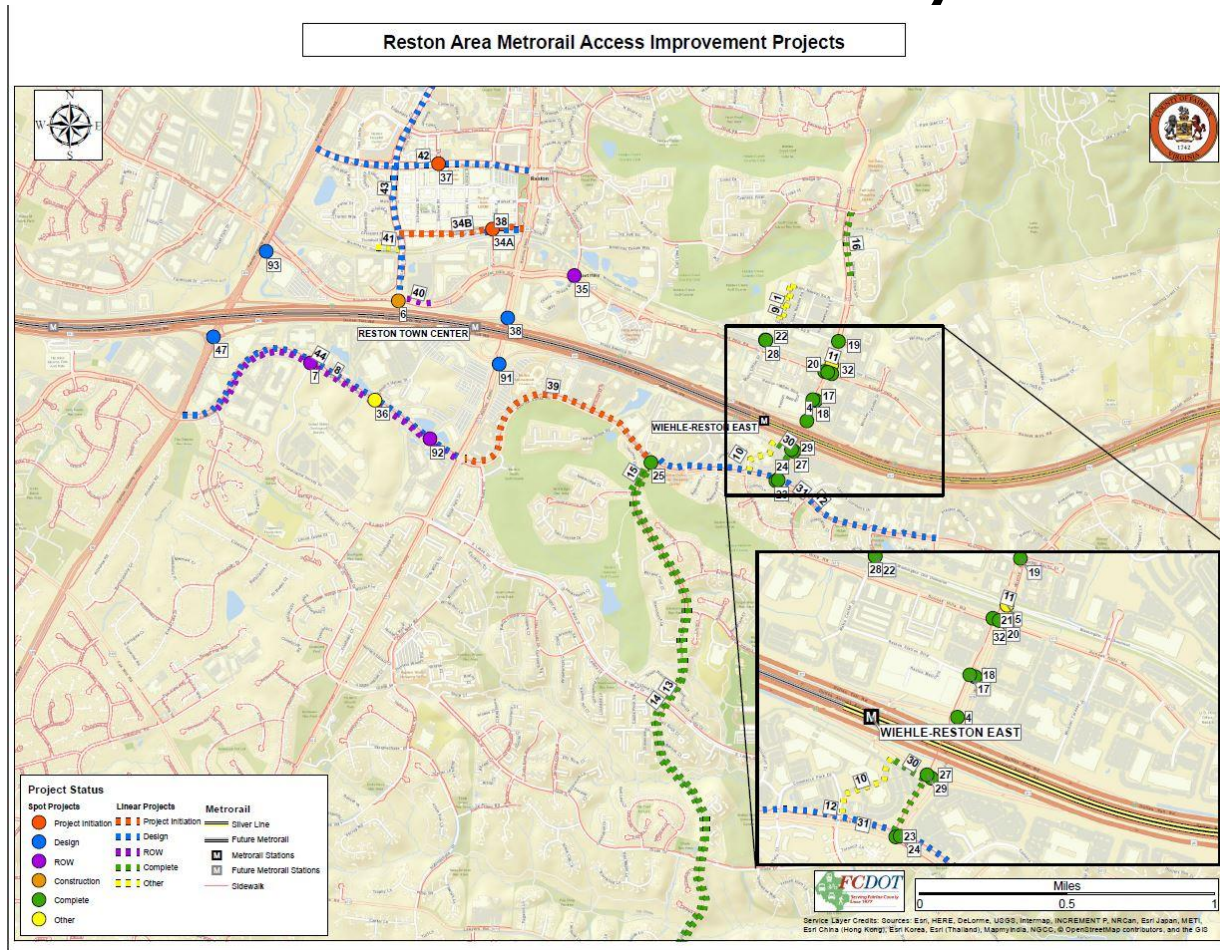
Final Report

Figure 3-45: Priorities of Intersection Actions





RMAG Today





TMSAMS



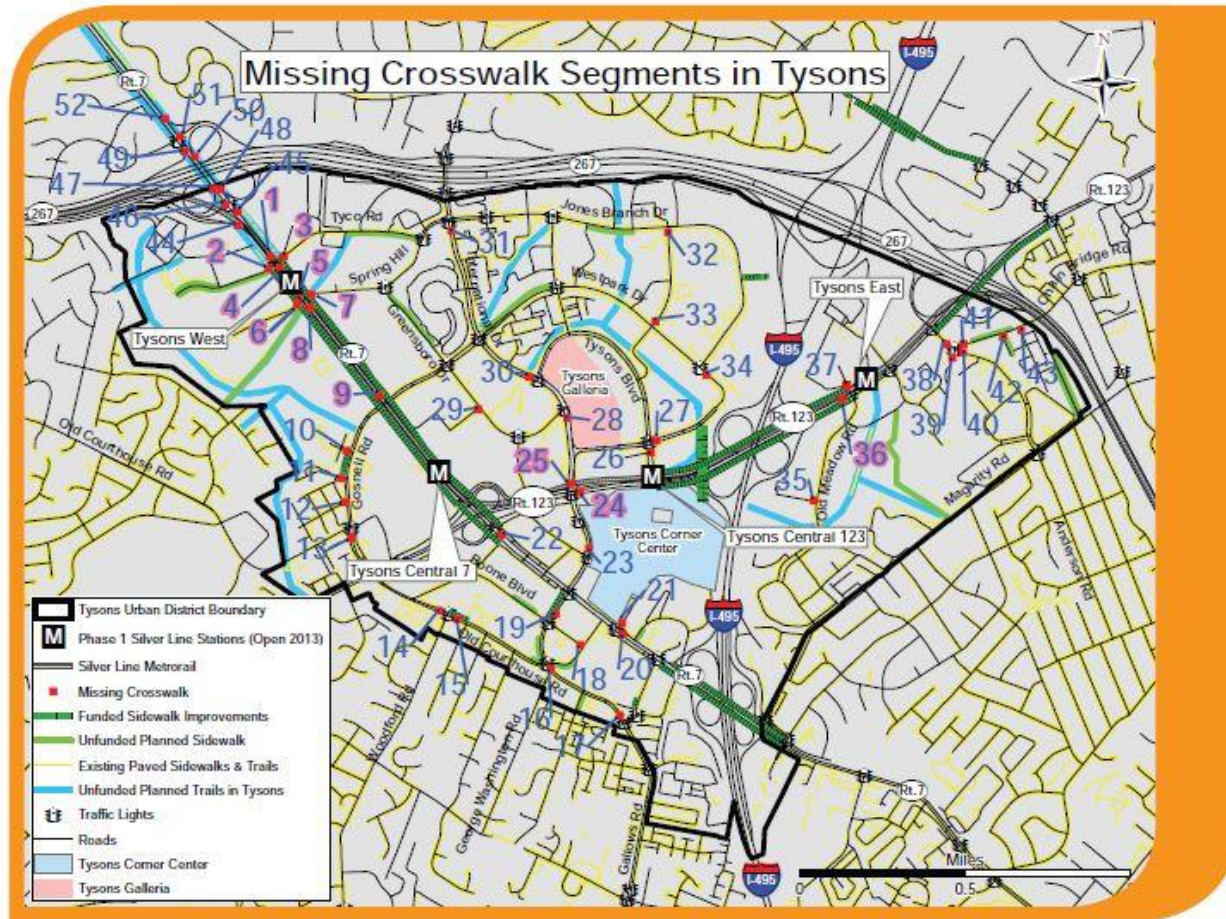
Final Report November 2011

Fairfax County Department of Transportation

© 2011 Fairfax County Department of Transportation

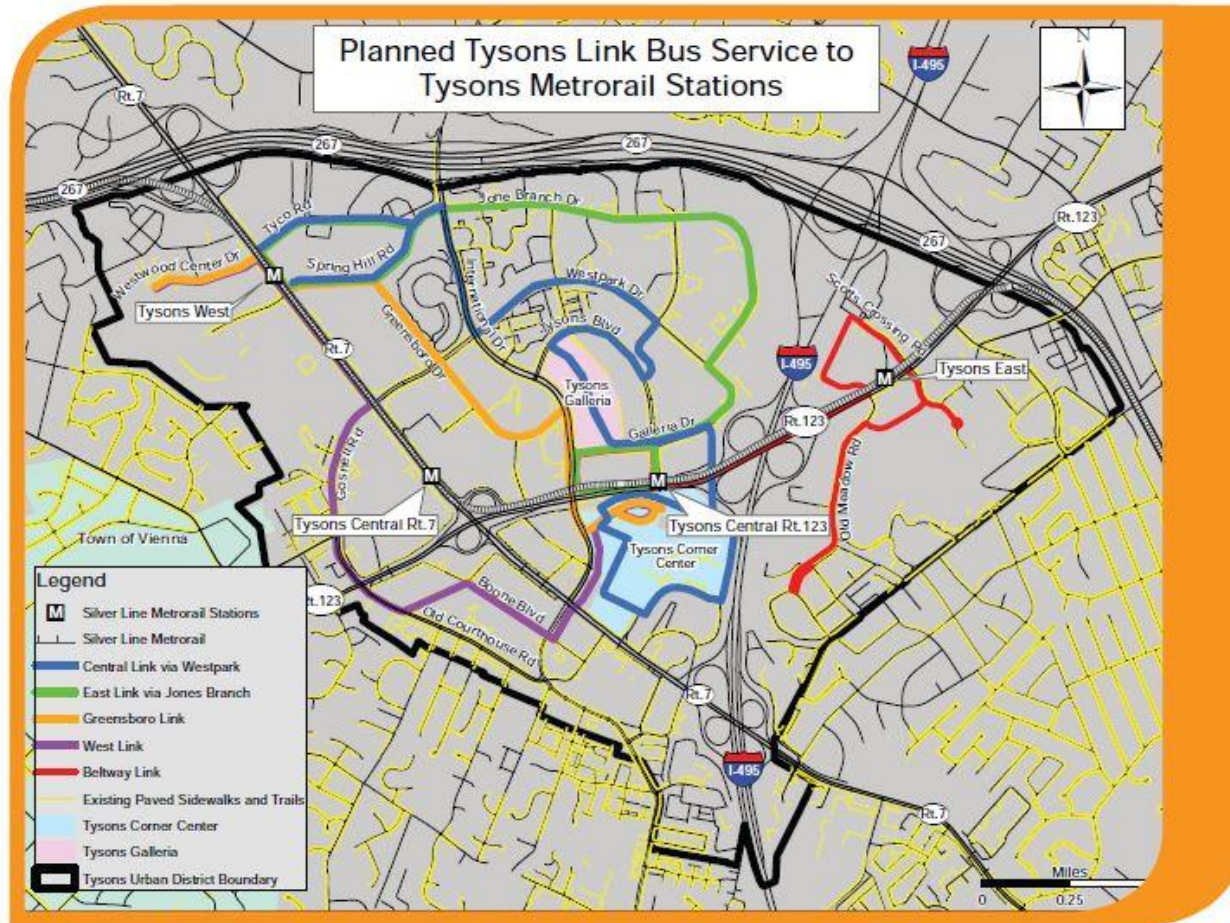


TMSAMS





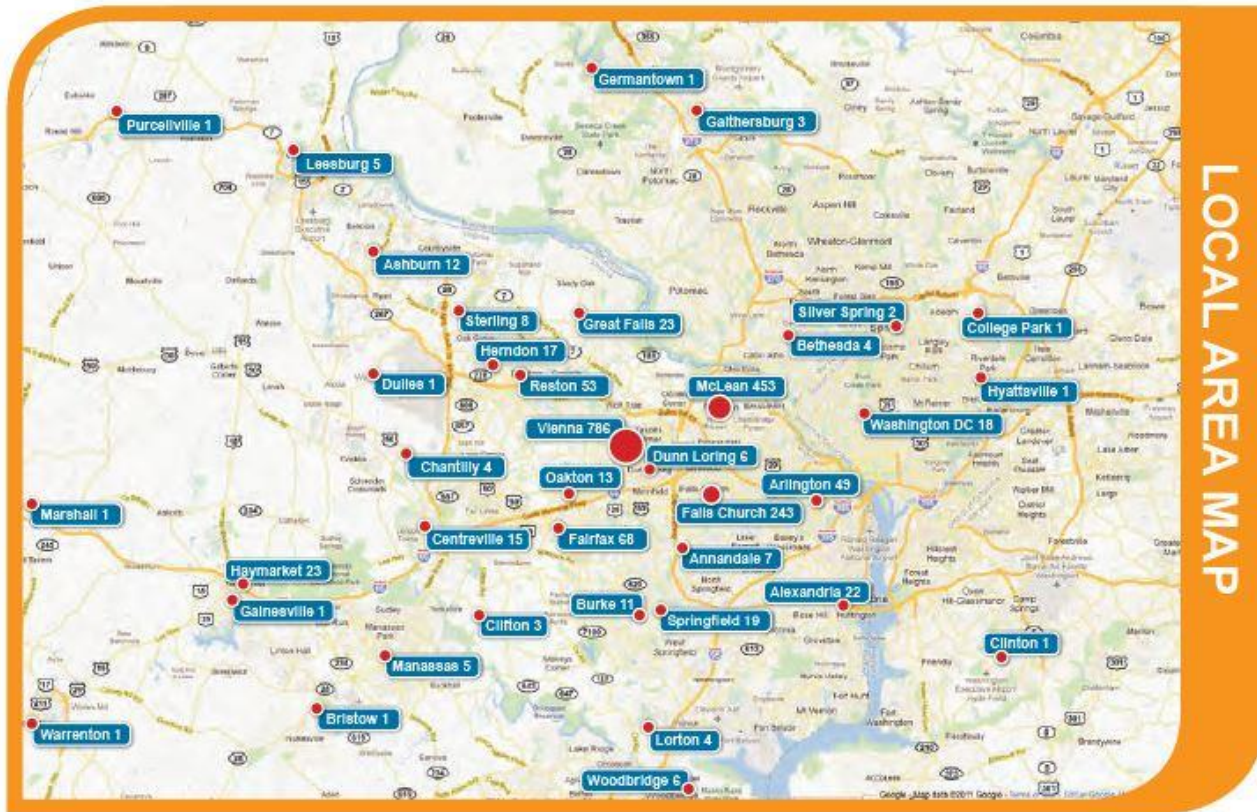
TMSAMS





TMSAMS

Survey respondents live throughout the study area and beyond.



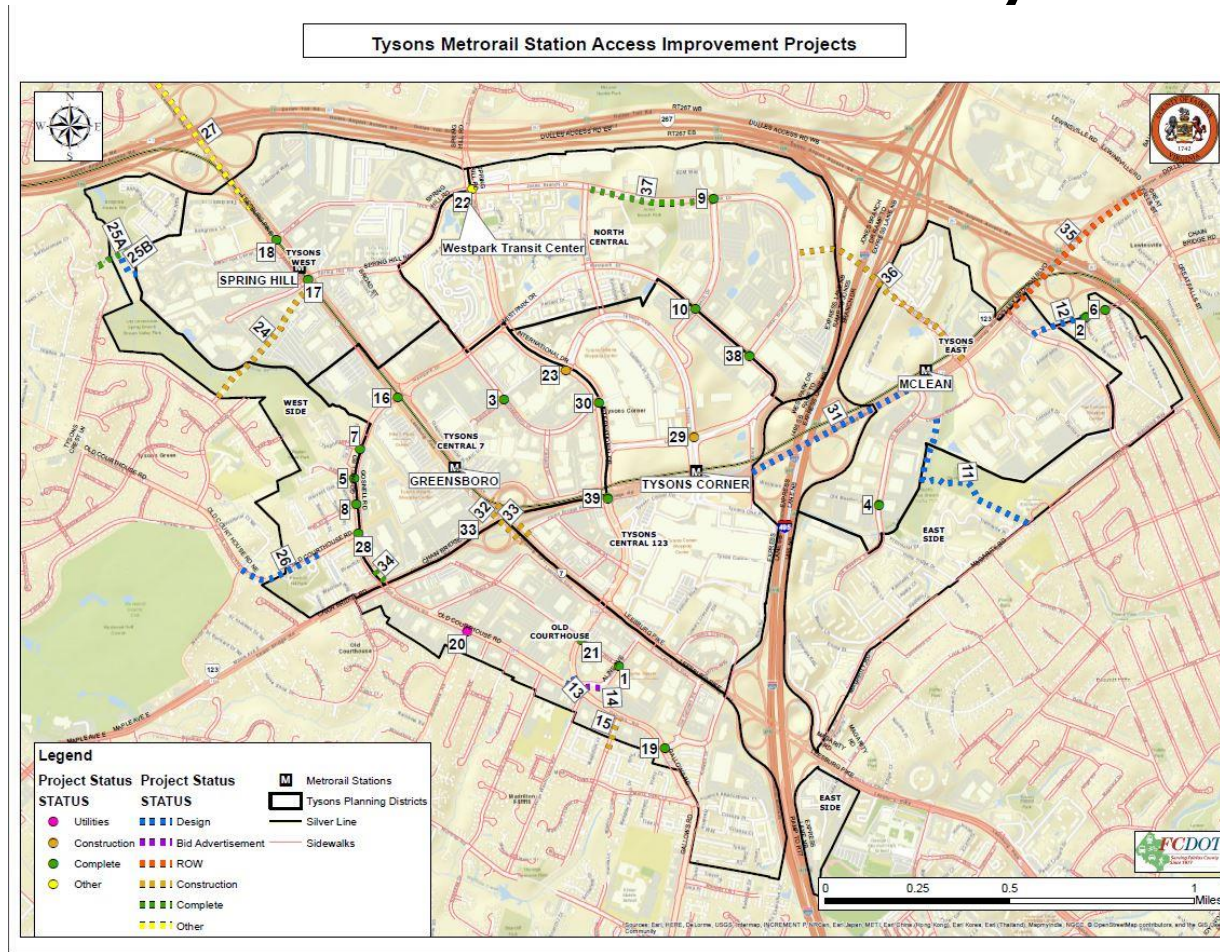


TMSAMS

- Pedestrian/Bicycle Recommendations
- Bus Service Recommendations
- Roadway Project Recommendations
- Travelers with Disabilities Recommendations
- Community Support Recommendations
- Implementation Recommendations



TMSAMS Today





HMSAMS

Herndon Metrorail Stations
Access Management Study
(HMSAMS)

Final Report

INNOVATION CENTER STATION

HERNDON STATION

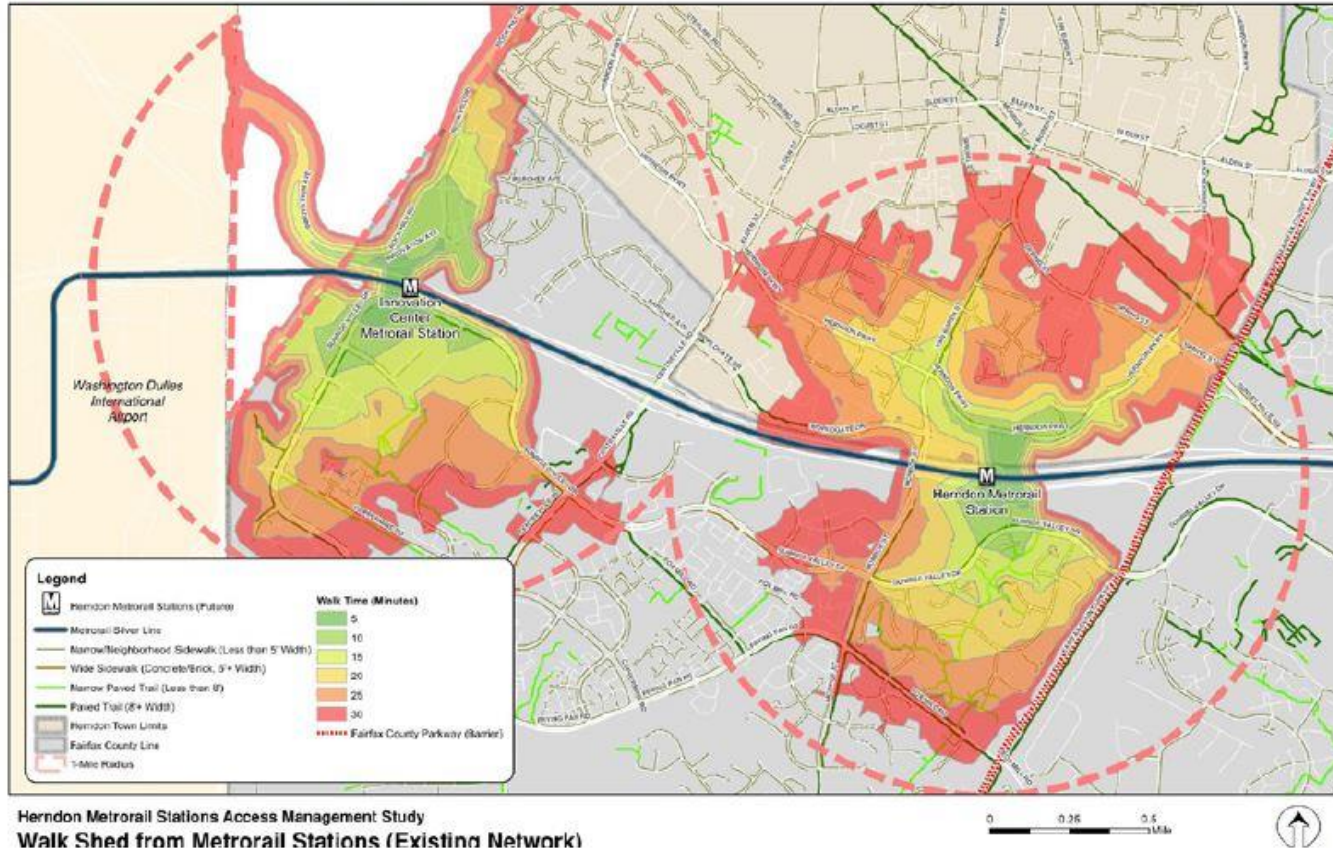
Prepared for
Kimley-Horn

September
2014



HMSAMS

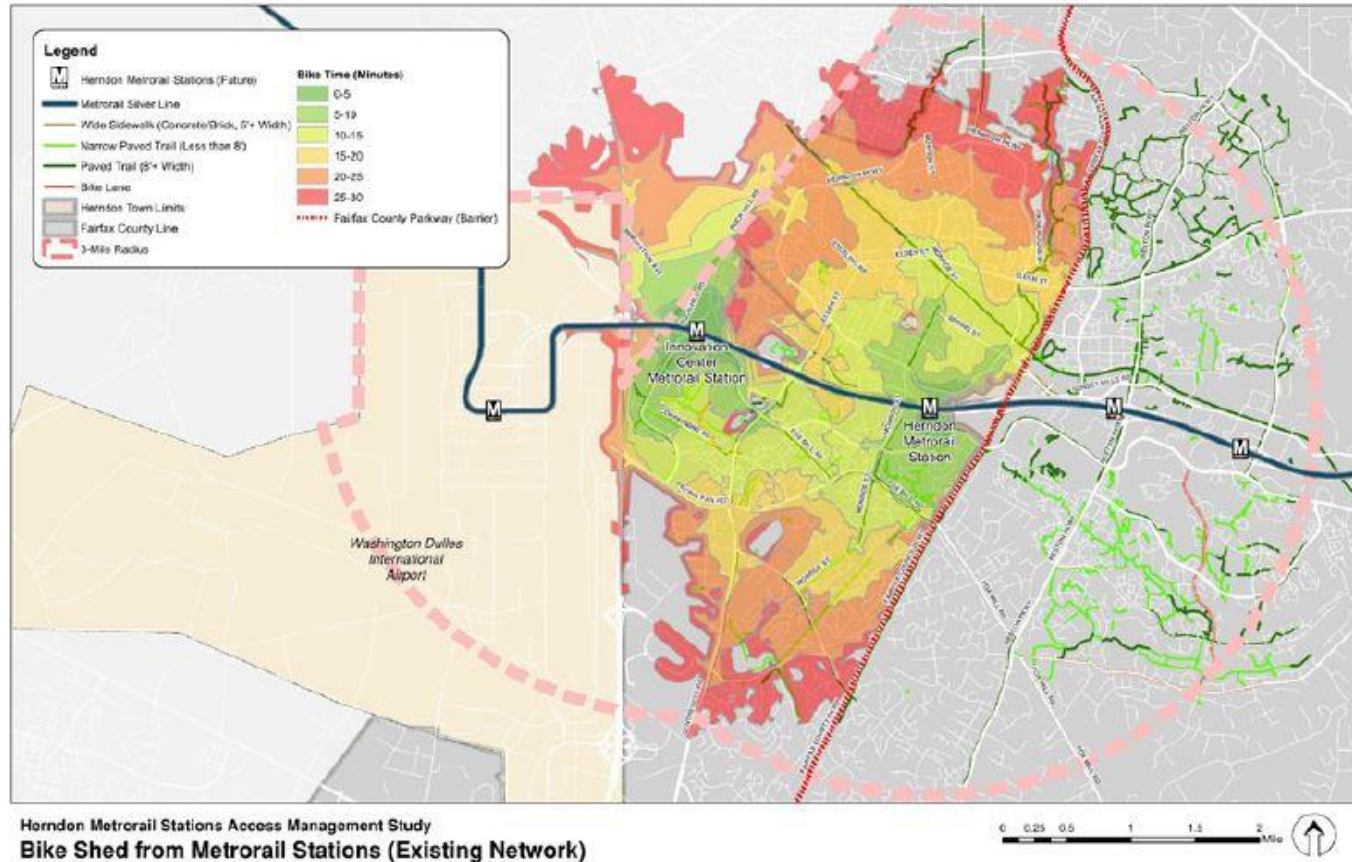
Figure 2.2: Existing Walkshed from Metrorail Station





HMSAMS

Figure 2.5: Existing Bike Shed from Metrorail Station





HMSAMS

HMSAMS Online Survey

From February to April 2014, the Herndon Metrorail Stations Access Management Study (HMSAMS) Advisory Group, Fairfax County Department of Transportation (FCDOT), and consultants conducted public outreach for this study. This outreach included three public meetings, key stakeholder interviews with public and private organizations in the Herndon area, and an online survey which was taken by 208 people. The public was asked to give their input and to prioritize intersection, pedestrian, and bicycle transportation improvements to provide better access to the new Silver Line Metrorail stations at Herndon and Innovation Center.

The HMSAMS Advisory Group developed 10 multimodal survey questions, with corresponding maps, which were posted online in both English and Spanish. To provide background in advance of taking the survey, a brief informational slide was presented ahead of the questions. The survey was online for approximately 30 days (March 24 through April 22, 2014) and was taken 208 times. The following public input was recorded from the online survey.



MetroQuest survey

1. What is your preferred station and station entrance?



Station	North Entrance	South Entrance
Herndon	76	74
Innovation Center	18	33

Answered question: 201 | Skipped question: 7



HMSAMS

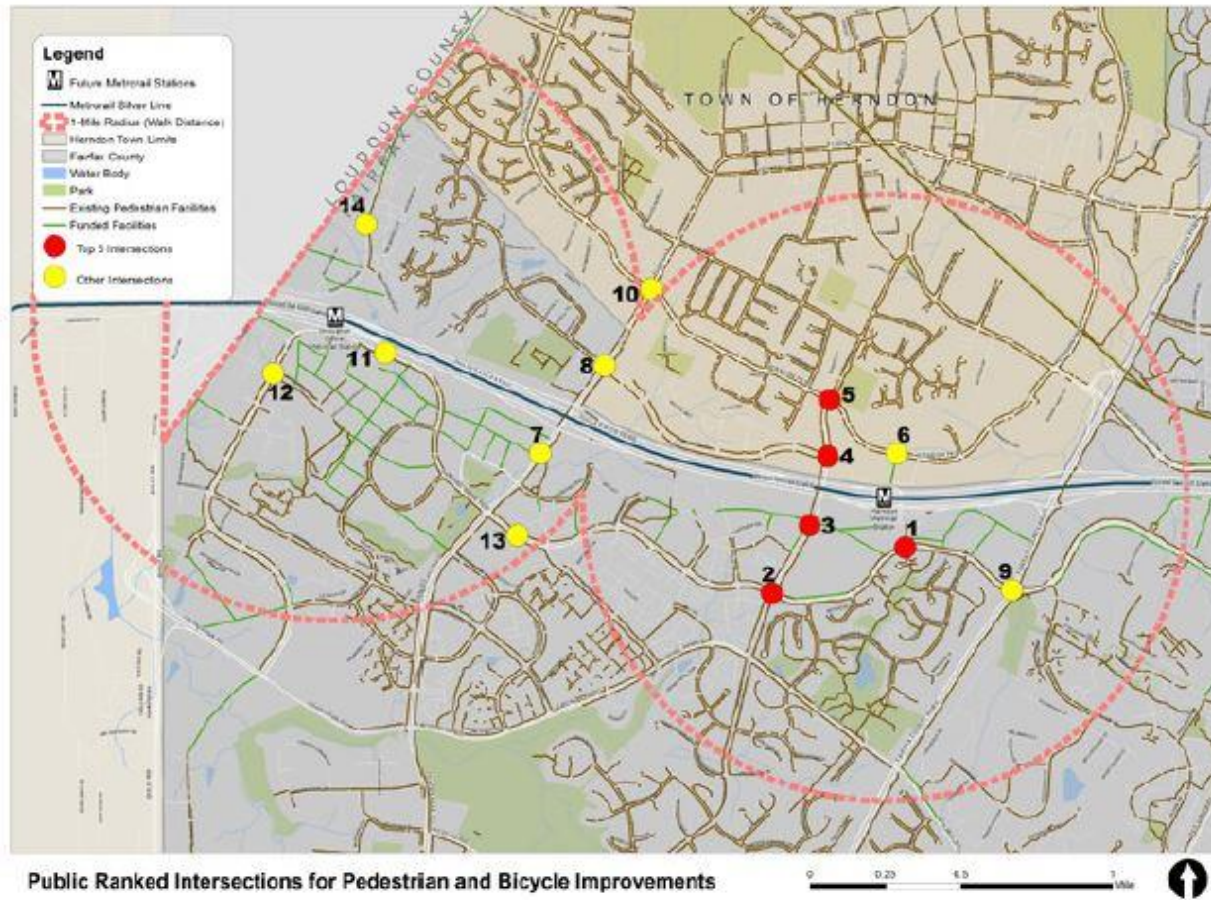
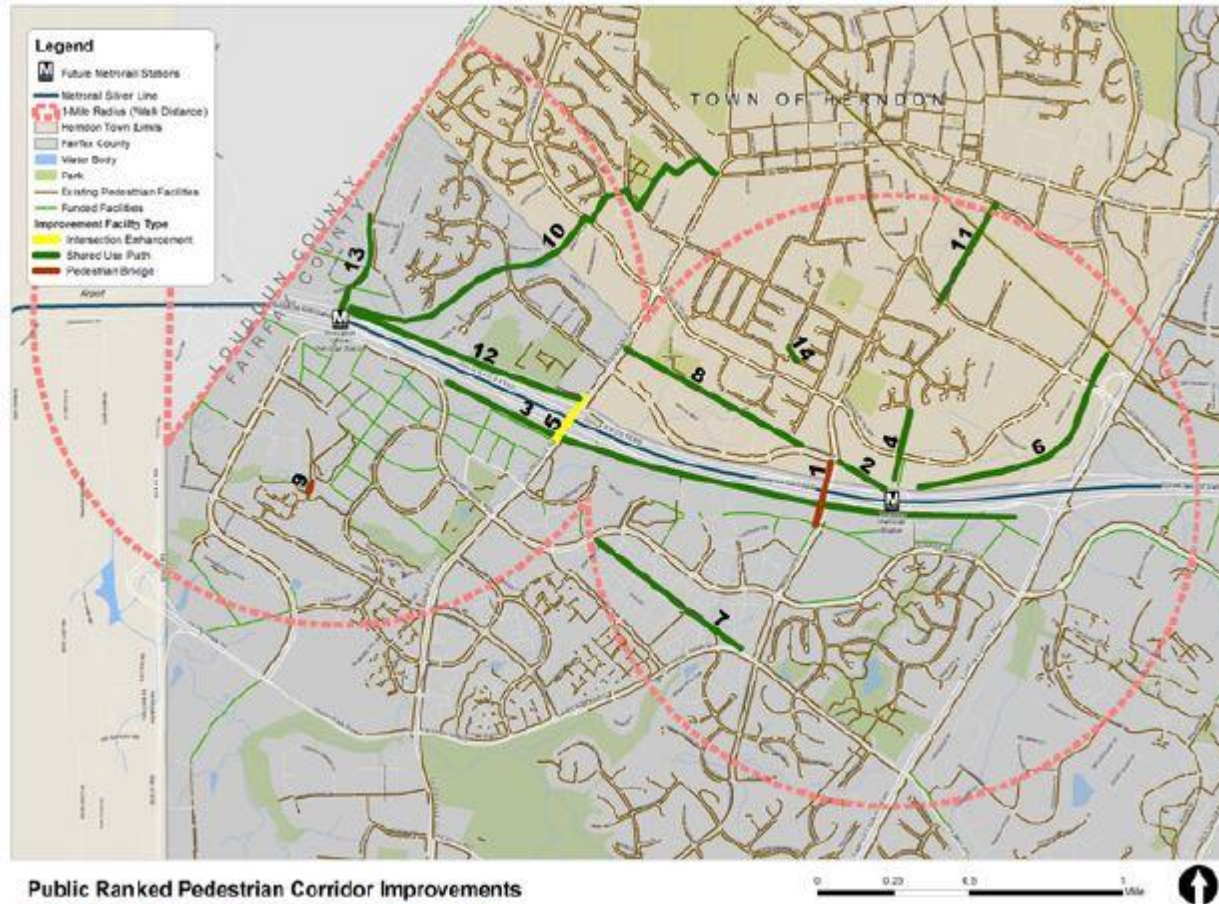


Figure 4.1: Intersection Improvements Map



HMSAMS





HMSAMS

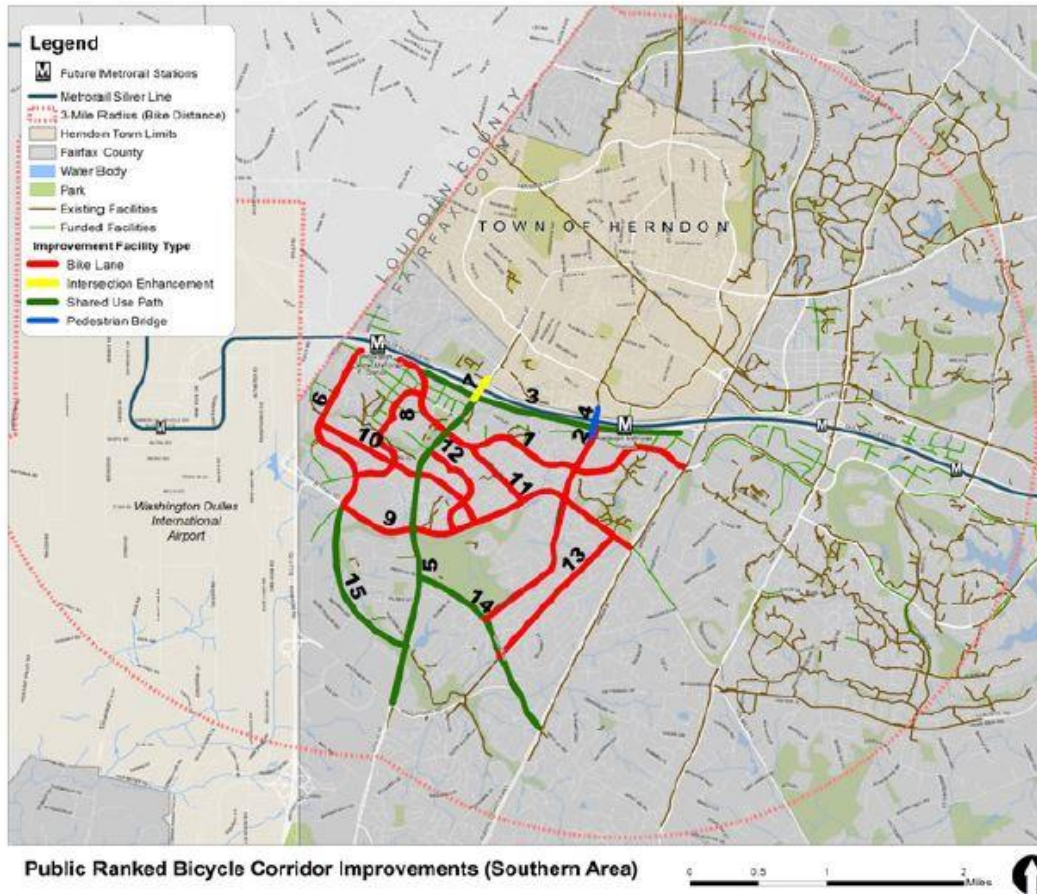
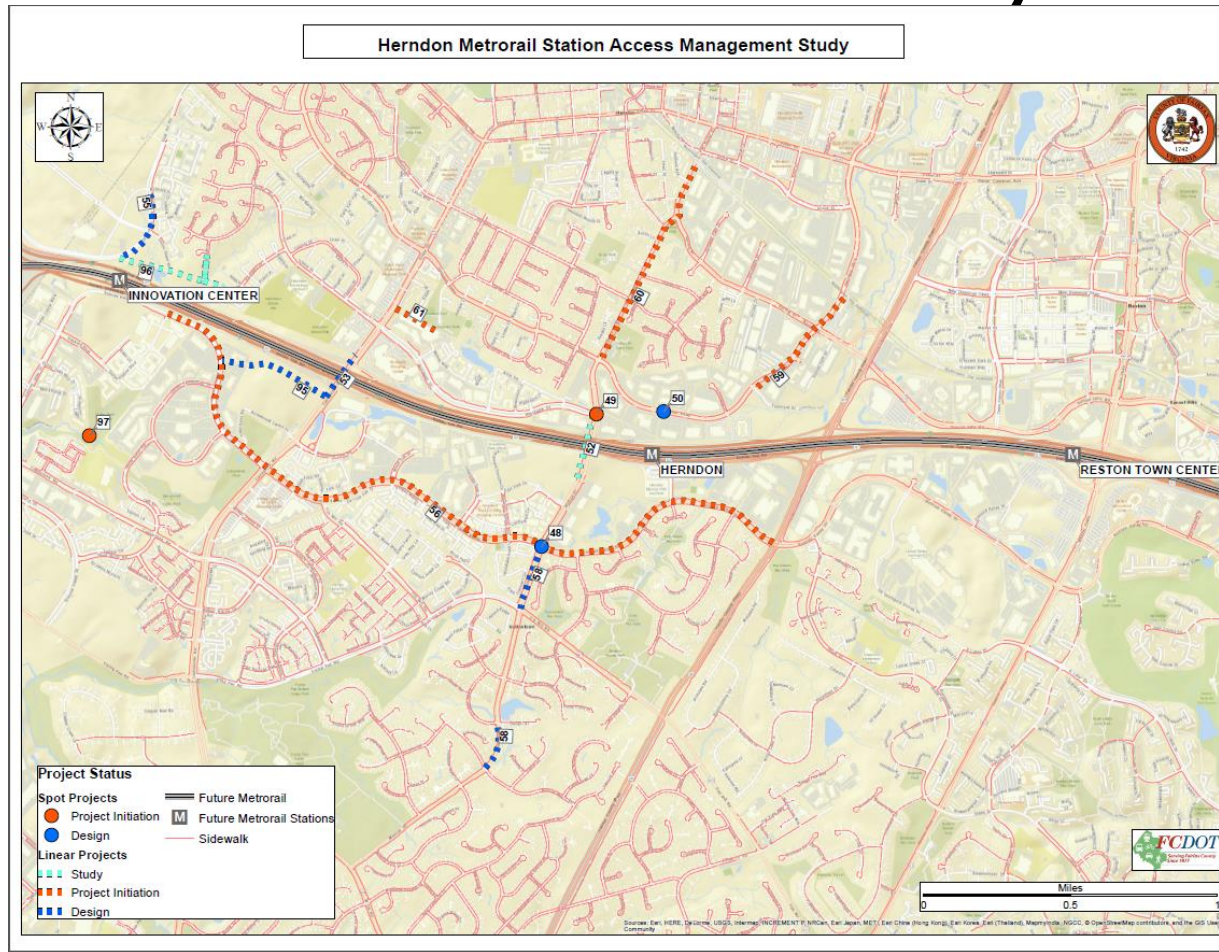


Figure 4.4: Bicycle Corridor South Improvements Map



HMSAMS Today





Vienna Metrorail Bicycle Access Study

Half-Price Bus Fares, Carpool Incentives Available to Commuters as I-66 Construction Gets Underway

Home > Transportation > Vienna Metrorail Bicycle Access Study

Transportation

CONTACT INFORMATION: Our office is open 8:00 AM-4:30 PM M-F

703-877-5600
TTY 711

DOTInfo@fairfaxcounty.gov

4050 Legato Road, Suite 400
Fairfax, VA 22033

Tom Biesiadny,
Director

DEPARTMENT RESOURCES

- Transportation Homepage
- Contact Us
- Fairfax Connector
- Commuter Services
- Bike-Walk
- Projects & Studies
- Boards and Commissions
- Disadvantaged Business Enterprise (DBE)
- Frequently Asked Questions (FAQs)
- Civil Rights/Title VI

RELATED RESOURCES

Vienna Metrorail Bicycle Access Study



Project News and Updates

Final Options Posted

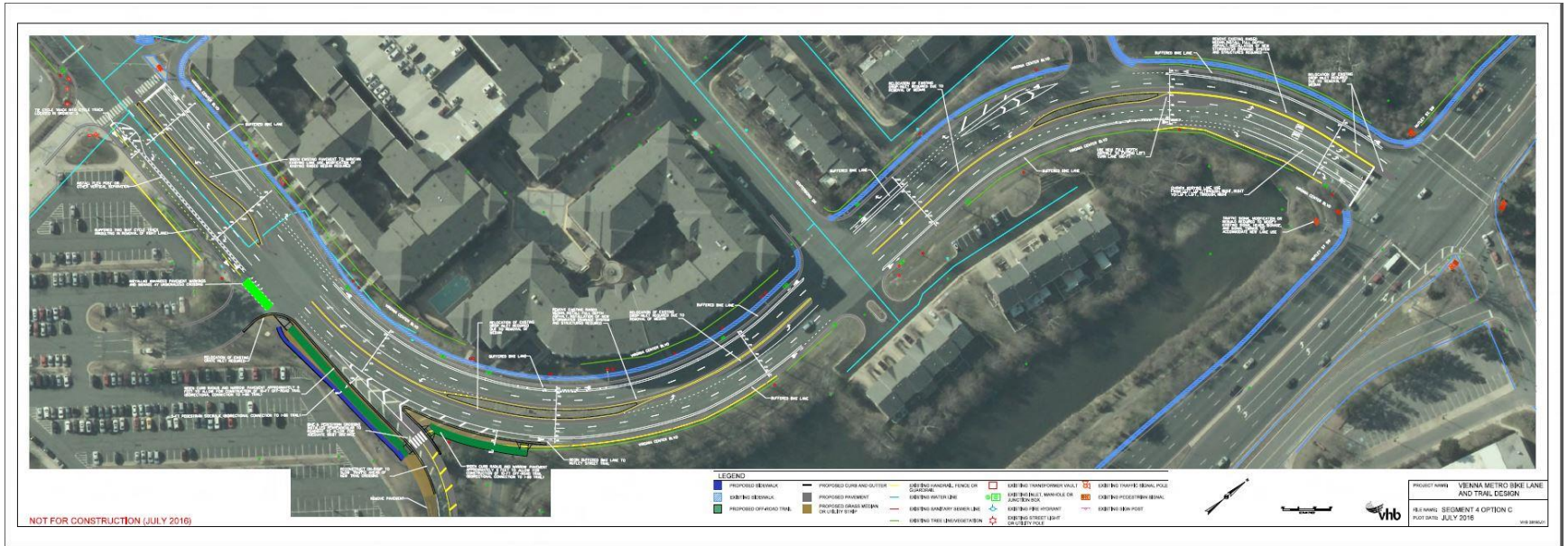
Please see the final options for Country Creek, Nutley Street, Sutton Road and Virginia Center Boulevard, listed below:

- Country Creek One Way
- Country Creek Two Way
- Nutley Street
- Sutton Road - North
- Sutton Road - South
- Virginia Center Blvd - Trail and Bike Lanes
- Virginia Center Blvd - Trail Connection

Fairfax County Department of Transportation (FCDOT) held a final meeting to share proposed concepts with the public and gather feedback toward selecting a preferred alternative on Thursday, June 16, 2016, 6:30 p.m., in the cafeteria of **Oakton High School**, 2900 Sutton Road, Vienna. The meeting featured the



Vienna Metrorail Bicycle Access Study



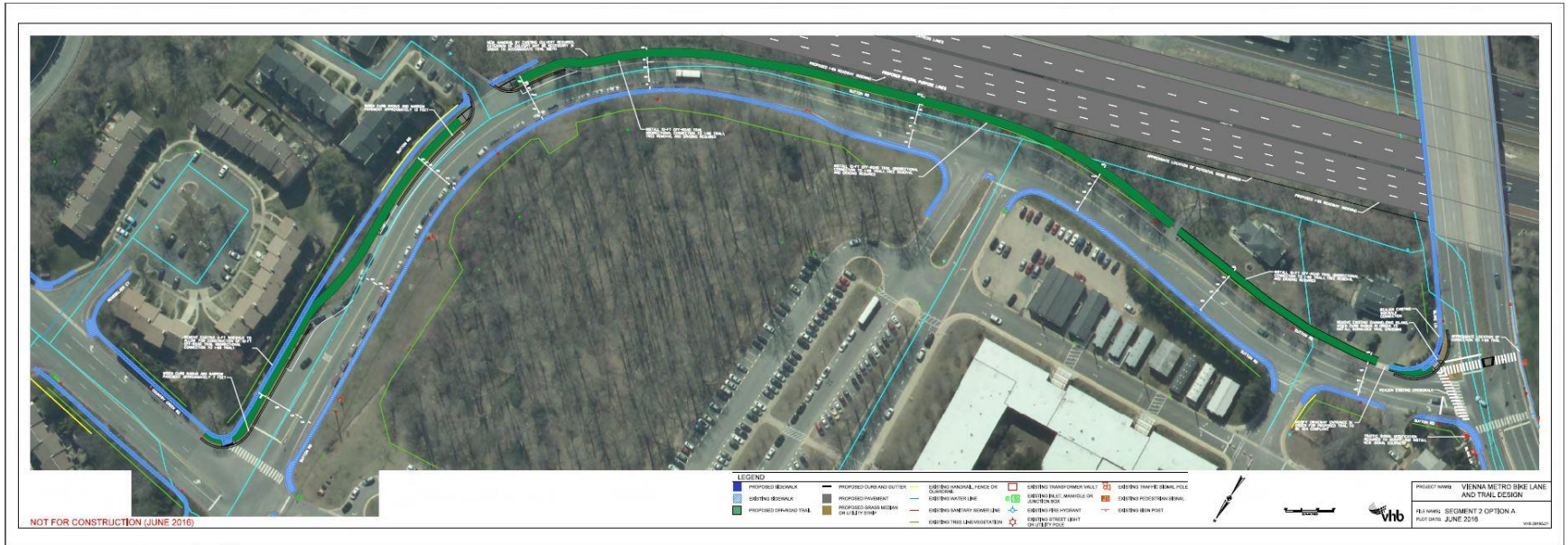


Vienna Metrorail Bicycle Access Study





Vienna Metrorail Bicycle Access Study





Vienna Metrorail Bicycle Access Study Today

Transform 66
OUTSIDE the Beltway
VDOT | BRPF

Multimodal Solutions - 495 to Haymarket

Home Inside the Beltway >

I-66 Overnight Closures and Lane Shifts Westbound I-66 between Route 234 Business and Route 29 in Gainesville

Home Learn More Commuter Options News & Information FAQs Construction & Lane Closures Contact Us

Transform 66 - Outside the Beltway
Multimodal Solutions - 495 to Haymarket

Learn More Provide Input Stay Informed

About I-66 Project Maps FAQs

About the Transform 66 Outside the Beltway Project

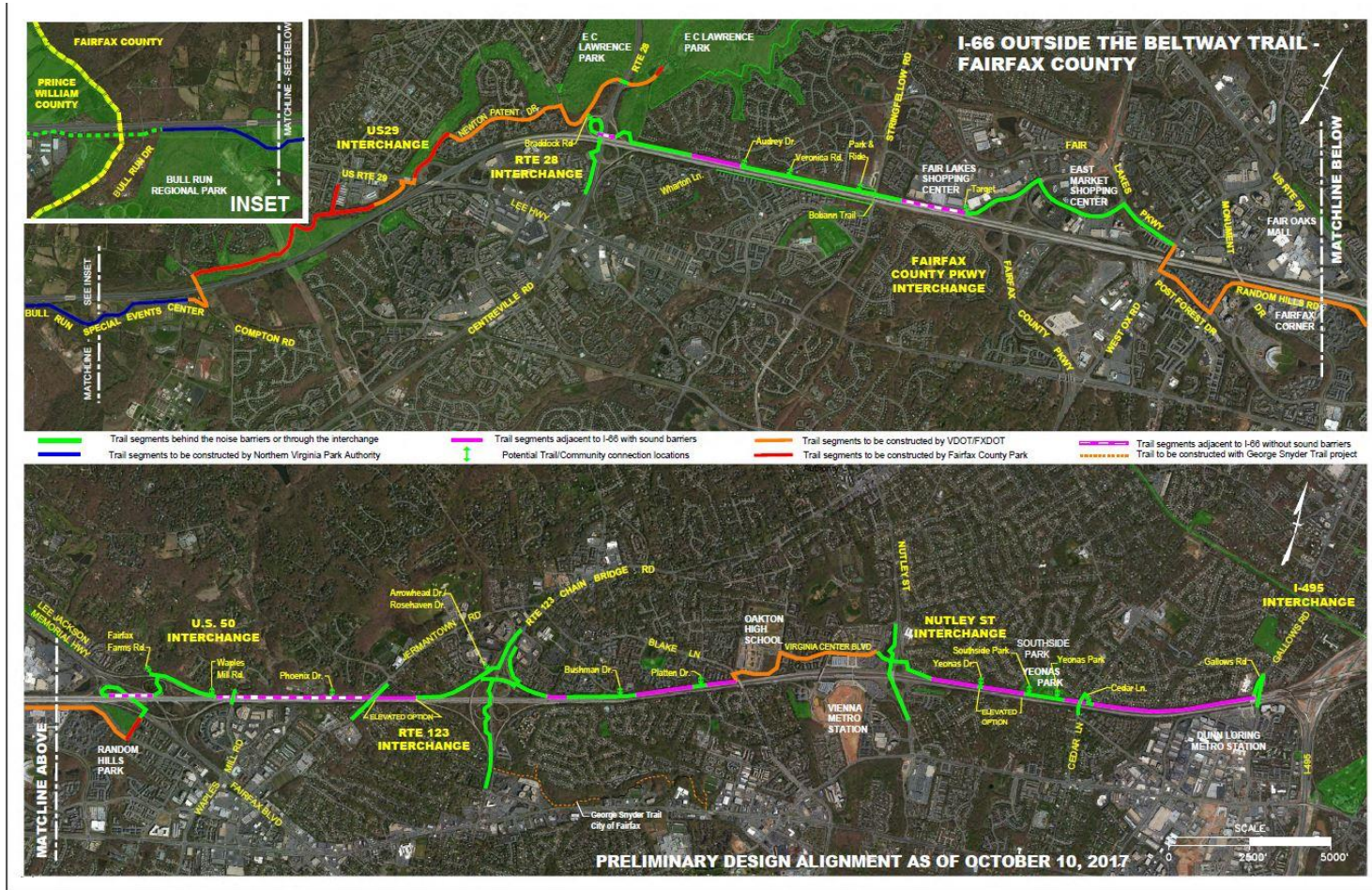
The Transform 66 Outside the Beltway project will transform Northern Virginia's Interstate 66 into a multimodal corridor that moves more people, provides reliable trips and offers new travel options. The project is a public-private partnership between the Virginia Department of Transportation (VDOT), the Department of Rail and Public Transportation (DRPT), and private partner, I-66 Express Mobility Partners, delivering \$3.7 billion of transportation improvements in the I-66 corridor. The project is scheduled for completion in December 2022.

What's New?

I-66 Overnight Closures and Lane Shifts on Westbound I-66 between Route 234 Business and Route 29 in Gainesville closures starting Monday, May 7

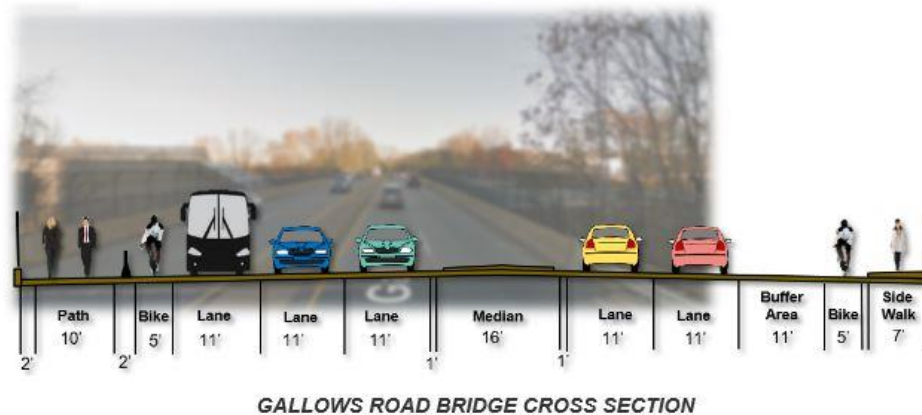
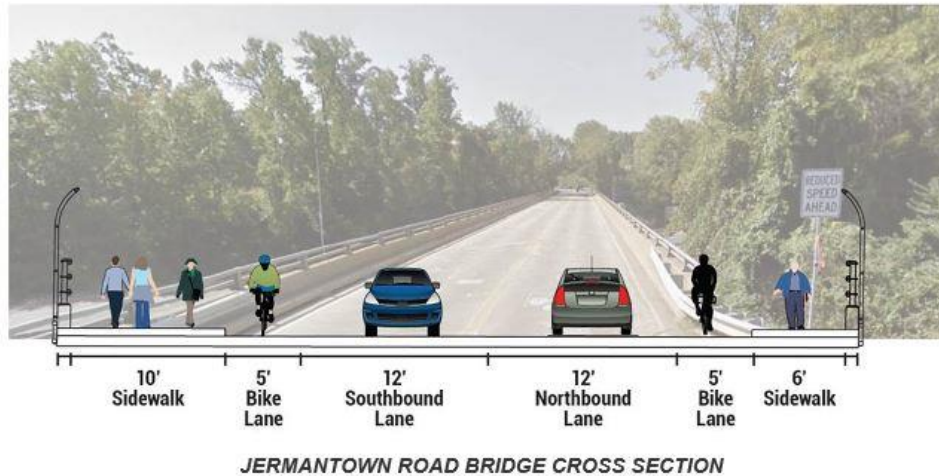


Vienna Metrorail Bicycle Access Study Today





Vienna Metrorail Bicycle Access Study Today





Vienna Metrorail Bicycle Access Study Today





FOUR EFFORTS TO IDENTIFY BICYCLE & PEDESTRIAN NEEDS FOR HIGH-CAPACITY TRANSIT STATIONS IN FAIRFAX COUNTY

Questions ???

*Chris Wells, County of Fairfax, Virginia
Bicycle and Pedestrian Programs Manager
Chris.Wells@FairfaxCounty.gov*