

Round 8.4 Cooperative Forecasts

TPB Technical Committee

Paul DesJardin
Director of Community Planning and Services
February 6, 2015

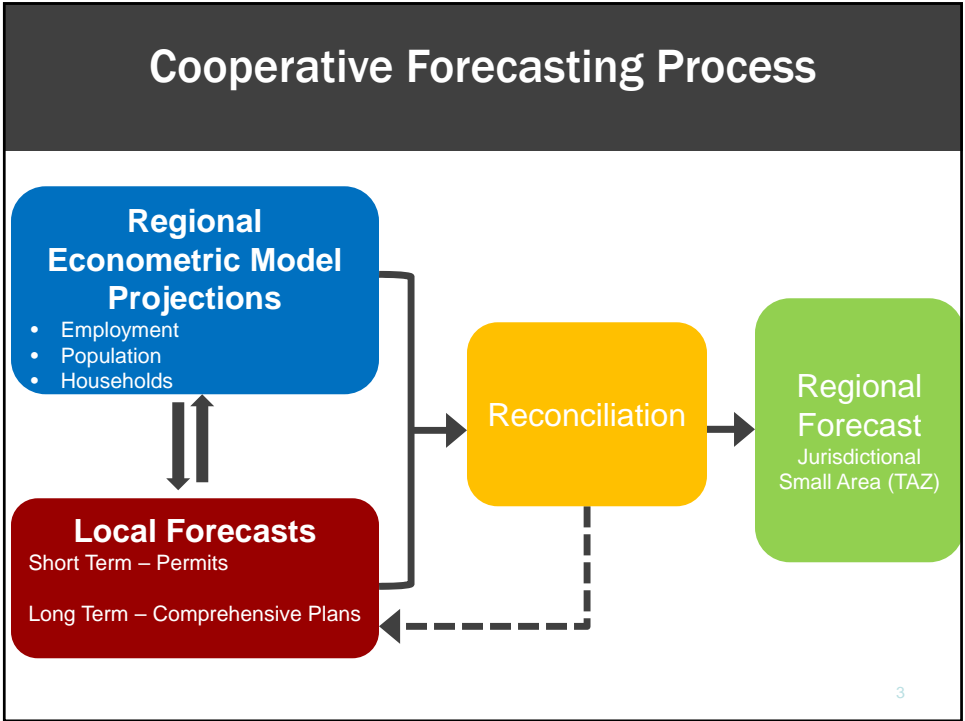


Use of Round 8.4 Cooperative Forecasts

2015 Air Quality
Conformity
Analysis

TPB CLRP
Performance
Analysis

Activity Center
Growth Trends



Growth Forecasts for All Jurisdictions in the TPB Modeled Area are included in Round 8.4

- COG Member Jurisdictions
- BMC Counties in TPB Modeled Area
 - Anne Arundel, Carroll & Howard
- Tri-County Council
 - Calvert, Charles & St. Mary's
- FAMPO
 - Fredericksburg, King George, Spotsylvania & Stafford
- Others
 - Clarke, Fauquier & Jefferson

4

Round 8.4 Jurisdictional Updates

- **Arlington County**
- **City of Alexandria**
- **Fairfax County** (*Population and Households Only*)
- **Prince William County**

- **New Forecasts for Anne Arundel, Carroll, and Howard Counties from the Baltimore Metropolitan Council**

5

Summary of Round 8.4 Cooperative Forecasts

	TPB Modeled Area (Thousands)		2010 to 2040 Growth	
	<u>2010</u>	<u>2040</u>	<u>Number</u>	<u>Percent</u>
	EMPLOYMENT	3,927.0	5,557.2	1,630.2
POPULATION	6,640.6	8,758.9	2,118.3	31.9%
HOUSEHOLDS	2,464.7	3,357.0	892.3	36.2%

6

Comparison of 2040 Forecasts: Round 8.4 and Round 8.3

TPB Modeled Area				
(Thousands)				
	Round 8.4	Round 8.3	Number	Percent
EMPLOYMENT	5,572.7	5,557.2	-15.5	-0.3%
POPULATION	8,794.6	8,758.9	-35.7	-0.4%
HOUSEHOLDS	3,372.6	3,357.0	-15.6	-0.5%

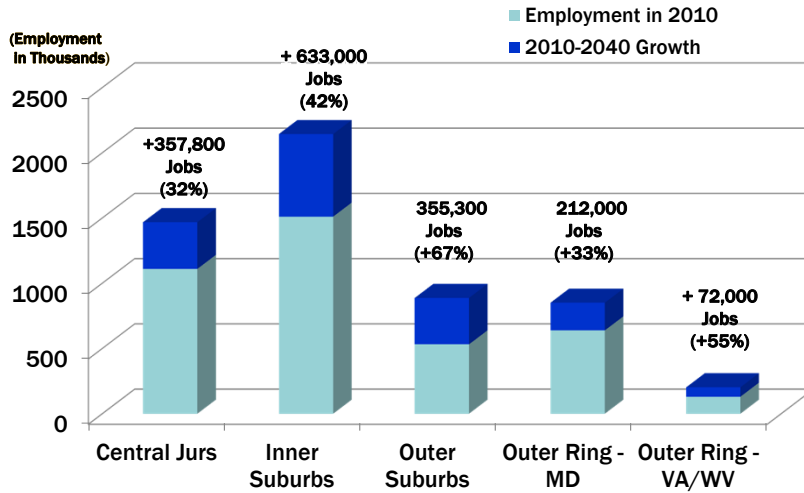
7

Forecasts for Jurisdictions in TPB Modeled Area Have Been Grouped Geographically for Analysis Purposes

Central Jurisdictions	Inner Suburbs	Outer Suburbs	Outer Ring - MD	Outer Ring - VA/WV
<ul style="list-style-type: none"> • District of Columbia • Arlington • Alexandria 	<ul style="list-style-type: none"> • Montgomery • Prince George's • Fairfax (County) • Fairfax (city) • Falls Church 	<ul style="list-style-type: none"> • Loudoun • Prince William • Manassas • Manassas Park • Calvert • Charles • Frederick County (MD) • Stafford 	<ul style="list-style-type: none"> • Anne Arundel • Carroll • Howard • St. Mary's 	<ul style="list-style-type: none"> • Fredericksburg • King George • Spotsylvania (portion) • Clarke • Fauquier • Jefferson (WV)

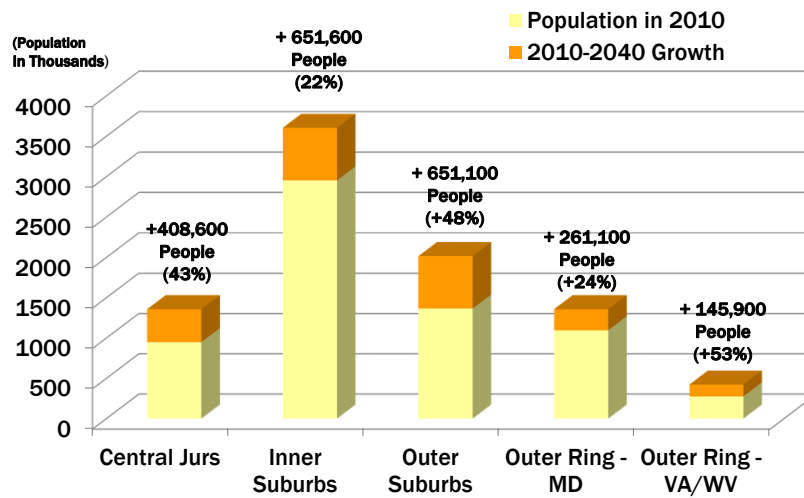
8

Forecast Employment Growth (2010-2040)

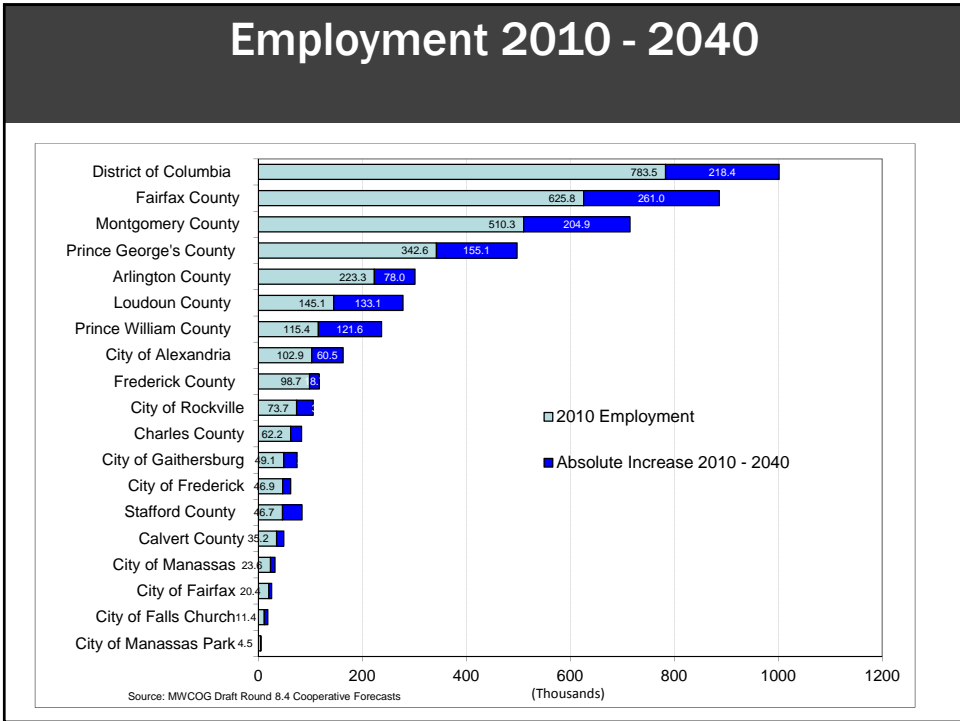
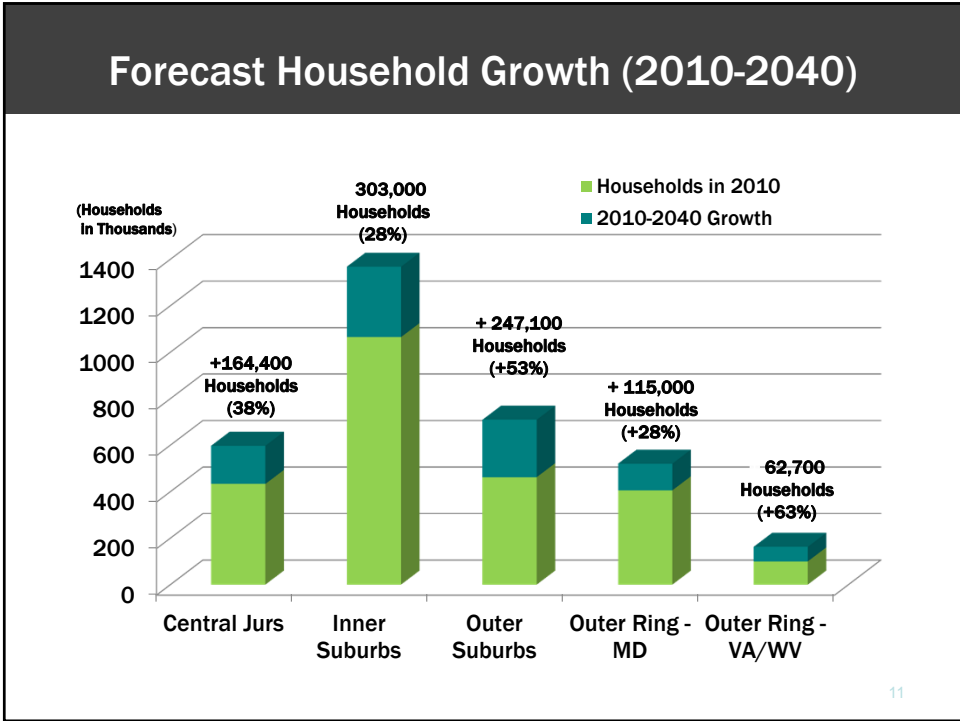


9

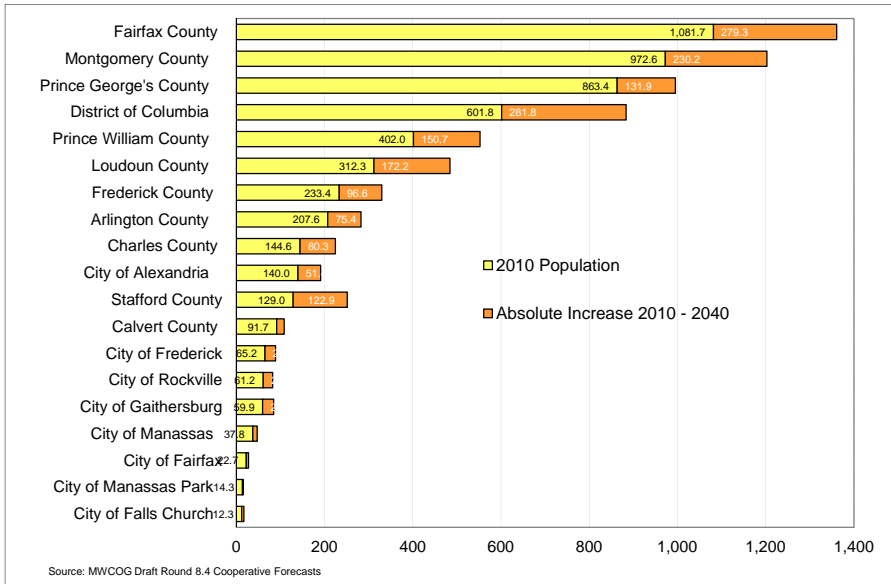
Forecast Population Growth (2010-2040)



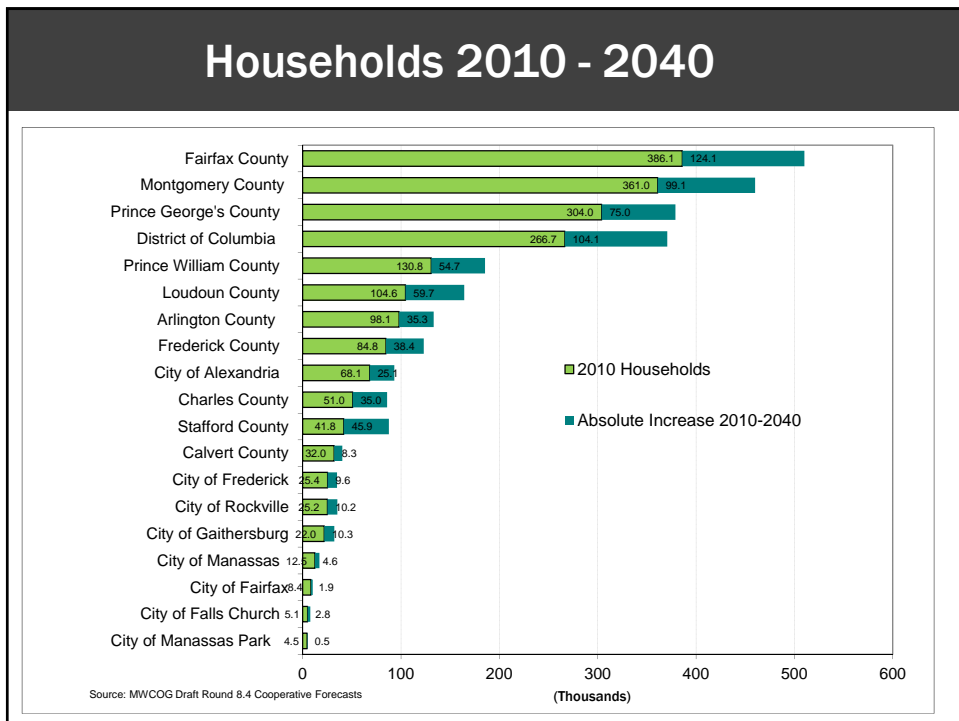
10



Population 2010 - 2040



Households 2010 - 2040



Round 8.3 Forecast Growth Within Activity Centers

EMPLOYMENT				
	2010	2040	2010 to 2040	
Outside Activity Centers	1,050,000	1,364,000	313,000	23.8%
Within Activity Centers	2,019,000	3,023,000	1,004,000	76.2%
TOTAL	3,070,000	4,387,000	1,317,000	100.0%

HOUSEHOLDS				
	2010	2040	2010 to 2040	
Outside Activity Centers	1,307,000	1,576,000	269,000	39.9%
Within Activity Centers	578,000	984,000	406,000	60.1%
TOTAL	1,886,000	2,560,000	675,000	100.0%

POPULATION				
	2010	2040	2010 to 2040	
Outside Activity Centers	3,669,000	4,404,000	735,000	44.9%
Within Activity Centers	1,377,000	2,278,000	901,000	55.1%
TOTAL	5,047,000	6,682,000	1,636,000	100.0%

15

Change in 2040 Activity Center Forecasts Round 8.3 Compared to Round 8.0

WITHIN ACTIVITY CENTERS				
	Round 8.0 2040	Round 8.3 2040	Change: Round 8.3 Minus Round 8.0	
			Number	Percent
Employment	3,003,000	3,023,000	20,000	0.7%
Population	2,079,000	2,278,000	199,000	9.6%
Households	915,000	984,000	69,000	7.5%

OUTSIDE ACTIVITY CENTERS				
	Round 8.0 2040	Round 8.3 2040	Change: Round 8.3 Minus Round 8.0	
			Number	Percent
Employment	1,355,000	1,364,000	9,000	0.7%
Population	4,307,000	4,404,000	97,000	2.3%
Households	1,587,000	1,576,000	(11,000)	-0.7%

16

Round 8.4: Next Steps

- Local jurisdictions submit Round 8.4 forecasts by traffic analysis zone
- COG Board will approve “Draft Round 8.4” for use in the Air Quality Conformity Analysis of the 2015 Update to the Financially Constrained Long-Range Transportation Plan (CLRP) and the FY 2015-2020 Transportation Improvement Program (TIP) – February 2015
- Final approval and adoption by the COG Board - October 2015

17

Planning for Growth: Next Steps

- **Cooperative Forecasts**
 - Round 8.4: *Alexandria, Arlington, Prince William, Fairfax County (population and households only)*
 - Round 9.0: *new regional economic model forecast;*
 - *housing and population trends;*
 - *employment density / space absorption*
- ***Region Forward Coalition***
 - Economic competitiveness
 - Housing affordability
 - Progress report / “State of the Region”

18

Questions . . .

19