

NEXT STEPS IN REGIONAL LAND-USE OPTIMIZATION FOR TRANSIT-ORIENTED COMMUNITIES

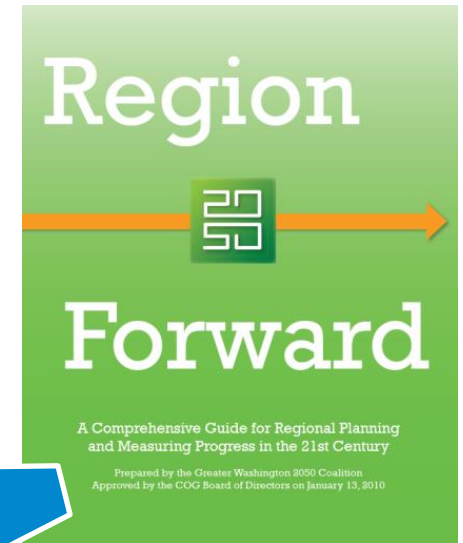
Transit Access Improvement Focus Areas

Kanti Srikanth
COG Deputy Executive Director for Metropolitan Planning

COG Board of Directors
August 12, 2020



Region Forward



Regional Housing Targets

Regional Target 1:

AMOUNT

At least 320,000 housing units should be added in the region between 2020 and 2030. This is an additional 75,000 units beyond the units already forecast for this period.

Regional Target 2:

ACCESSIBILITY

At least 75% of all new housing should be in Activity Centers or near high-capacity transit.

Regional Target 3:

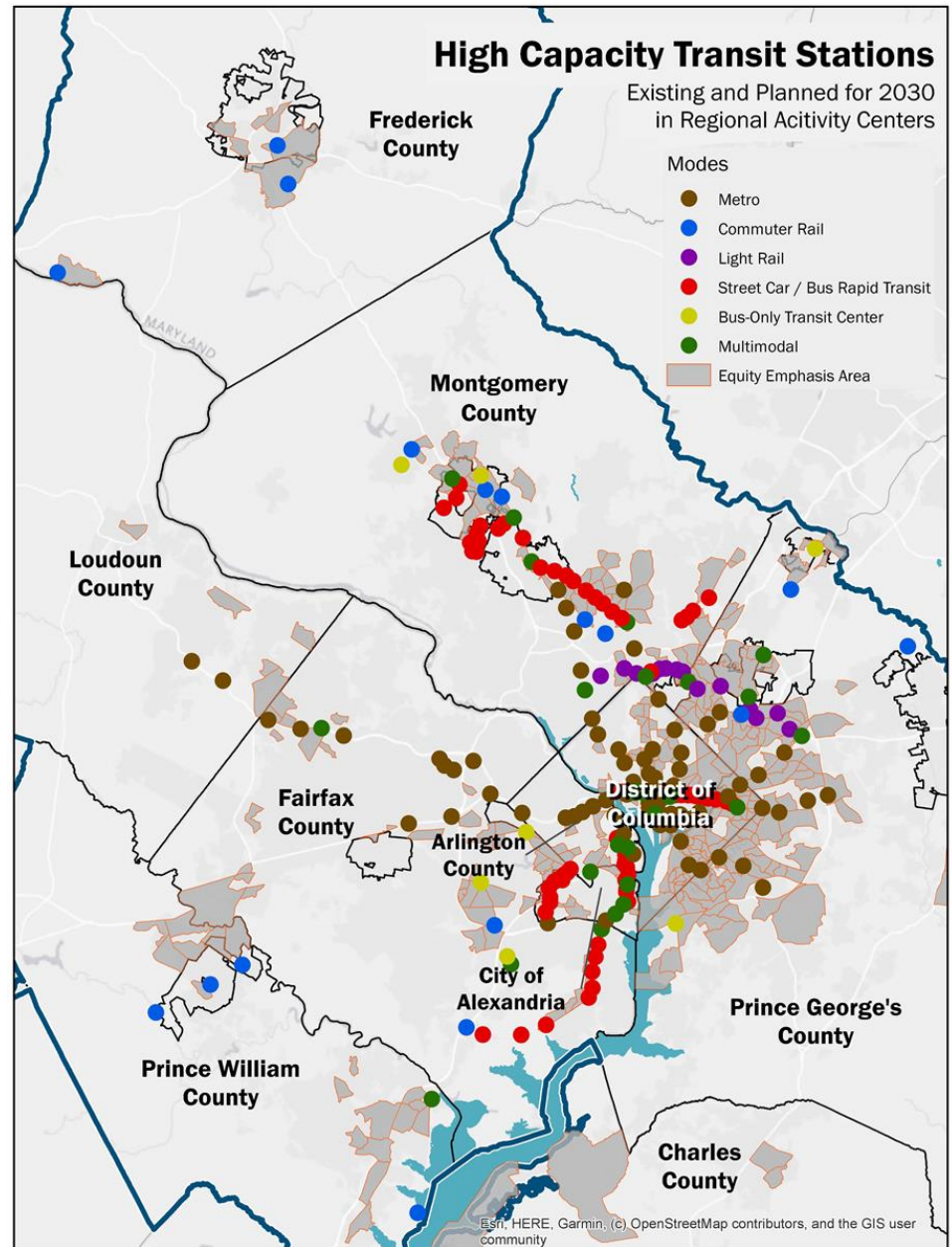
AFFORDABILITY

At least 75% of new housing should be affordable to low- and middle-income households.



HCT Stations by 2030

- 208 High Capacity Transit stations
 - Metro rail
 - Commuter rail (MARC / VRE)
 - Light Rail
 - Streetcar
 - Bus Rapid Transit
- 99 of 141 Activity Centers
- 164 stations are in Equity Emphasis Areas



High Capacity Transit Stations: By 2030

JURISDICTION	TOTAL	Bus Transit Center	Commuter Rail	Light Rail	Metro Rail	Multi System	Streetcar / BRT
City of Alexandria	19	0	0	0	1	3	15
Arlington County	19	0	0	0	9	3	7
City of College Park	3	0	0	1	0	2	0
District of Columbia	53	0	0	0	33	6	14
Fairfax County	27	3	2	0	11	3	8
Frederick County	2	0	2	0	0	0	0
City of Frederick	1	0	1	0	0	0	0
City of Gaithersburg	7	1	1	0	0	1	4
City of Laurel	1	1	0	0	0	0	0
Loudoun County	2	0	0	0	2	0	0
City of Manassas	1	0	1	0	0	0	0
City of Manassas Park	1	0	1	0	0	0	0
Montgomery County	40	1	4	8	5	4	18
Prince George's County	23	1	3	5	12	2	0
Prince William County	3	0	2	0	0	1	0
City of Rockville	6	0	0	0	1	1	4
Regional Total	208	7	17	14	74	26	70

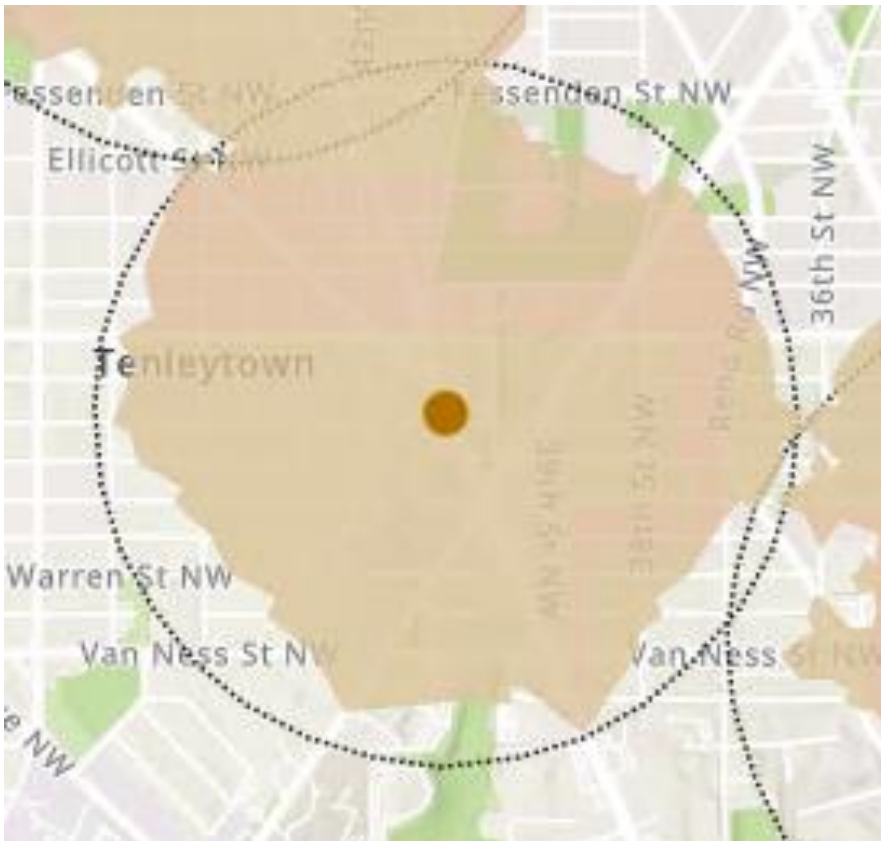


Transit Station Area Profile

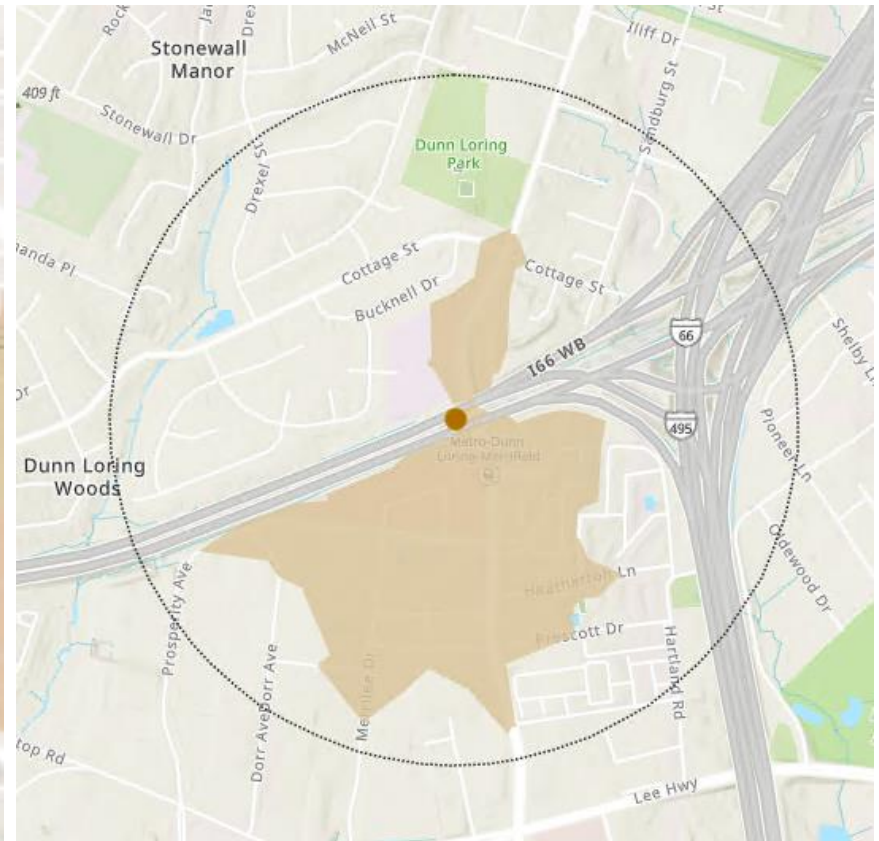
	Station Areas (2030)	Stations within an Equity Emphasis Area	Total Population		Total Employment	
			2020	2030	2020	2030
REGION	208	164	2,127,517	2,435,006	2,014,335	2,285,815
<i>Jurisdiction</i>						
City of Alexandria	19	14	144,910	158,759	103,835	120,538
Arlington County	19	16	168,807	188,316	185,003	205,567
District of Columbia	53	46	610,857	713,840	810,584	899,729
Fairfax County	27	14	332,250	418,263	318,741	378,137
Frederick County	3	3	20,464	26,334	30,581	33,009
Loudoun County	2	0	14,525	24,971	25,388	40,834
Montgomery County	53	42	502,374	555,855	379,921	426,616
Prince George's County	27	26	283,583	292,842	136,488	152,269
Prince William County	5	3	49,747	55,826	24,494	29,116



Transit Station Walksheds



Tenleytown-AU Metro

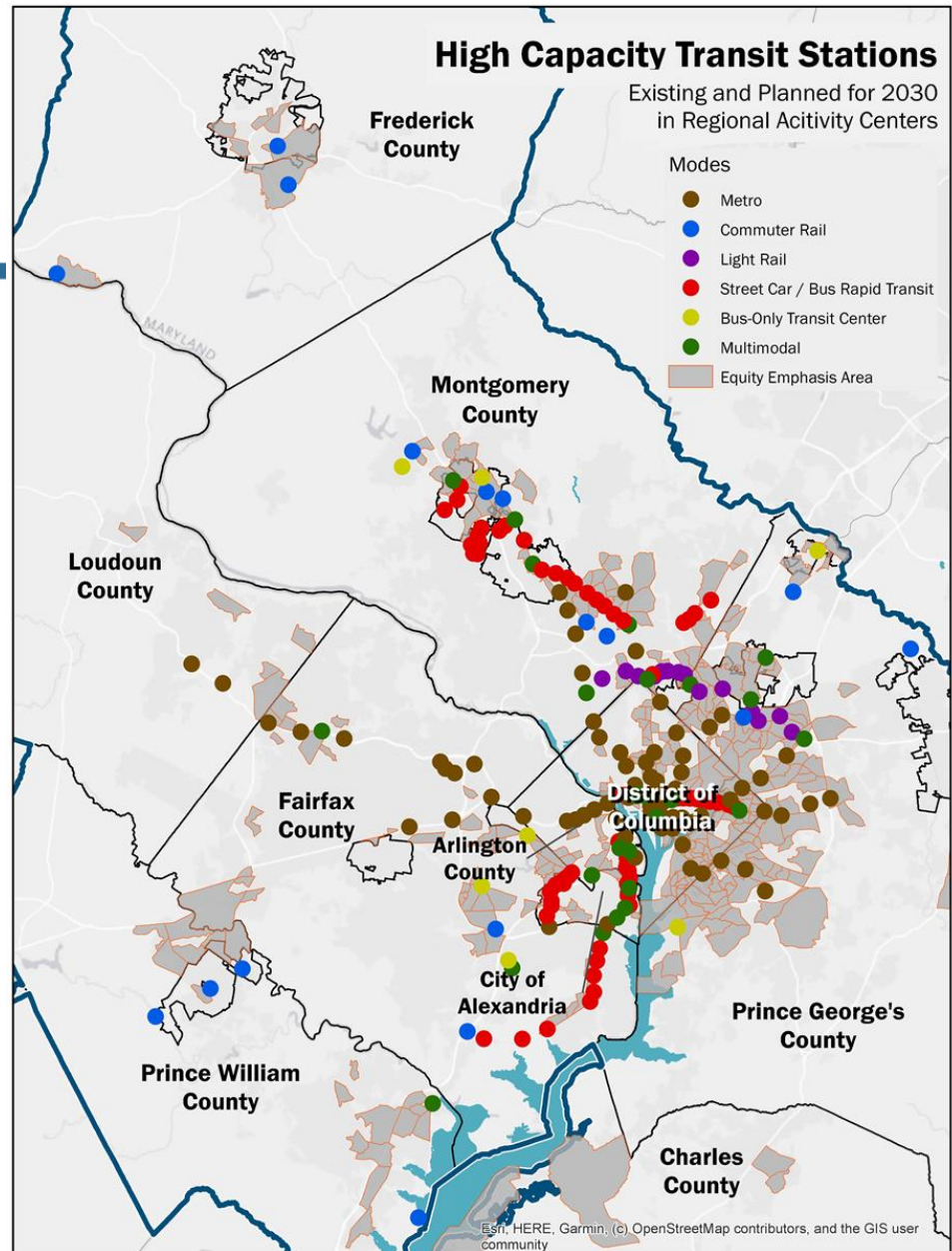


Dunn-Loring Metro



Transit Access Focus Areas

- Calling on the region to prioritize projects, programs, and policies needed to improve walk and bike access to all 208 transit stations by 2030!
- TPB calls for focus on 49 of these 208 with the greater deficiency in walk/bike infrastructure, yet high potential users of transit.



Kanti Srikanth

COG Deputy Executive Director for Metropolitan Planning

(202) 962-3257

ksrikanth@mwcog.org

mwcog.org

777 North Capitol Street NE, Suite 300

Washington, DC 20002



Metropolitan Washington
Council of Governments